

STORM WATER SEWER

to serve

SHONEY'S TRUCK WAREHOUSE

Private Project No.

461 PPS (607861)

City of Wichita, Kansas - Michael E. Lindebak, City Engineer

GENERAL NOTES

1. Contractor will be required to provide notice to utility companies a minimum of TWENTY-FOUR (24) HOURS PRIOR to any excavation, as follows:

Kansas One-Call 687-2470
THE CONTRACTOR MUST NOTIFY THE FOLLOWING IN CASE OF AN EMERGENCY

Cablevision	262-4270	-or-	293-2061
K.P.L. Gas Service Company			263-7511
Kansas Gas & Electric Company			264-1141
Arkla Gas Company	942-835	-or-	263-8101
S.W. Bell Telephone Company			1-571-2611
Williams Natural Gas Co.	524-4390	or	524-0491
City of Wichita Water Department			266-4908
City of Wichita Sewer Maintenance			266-4071

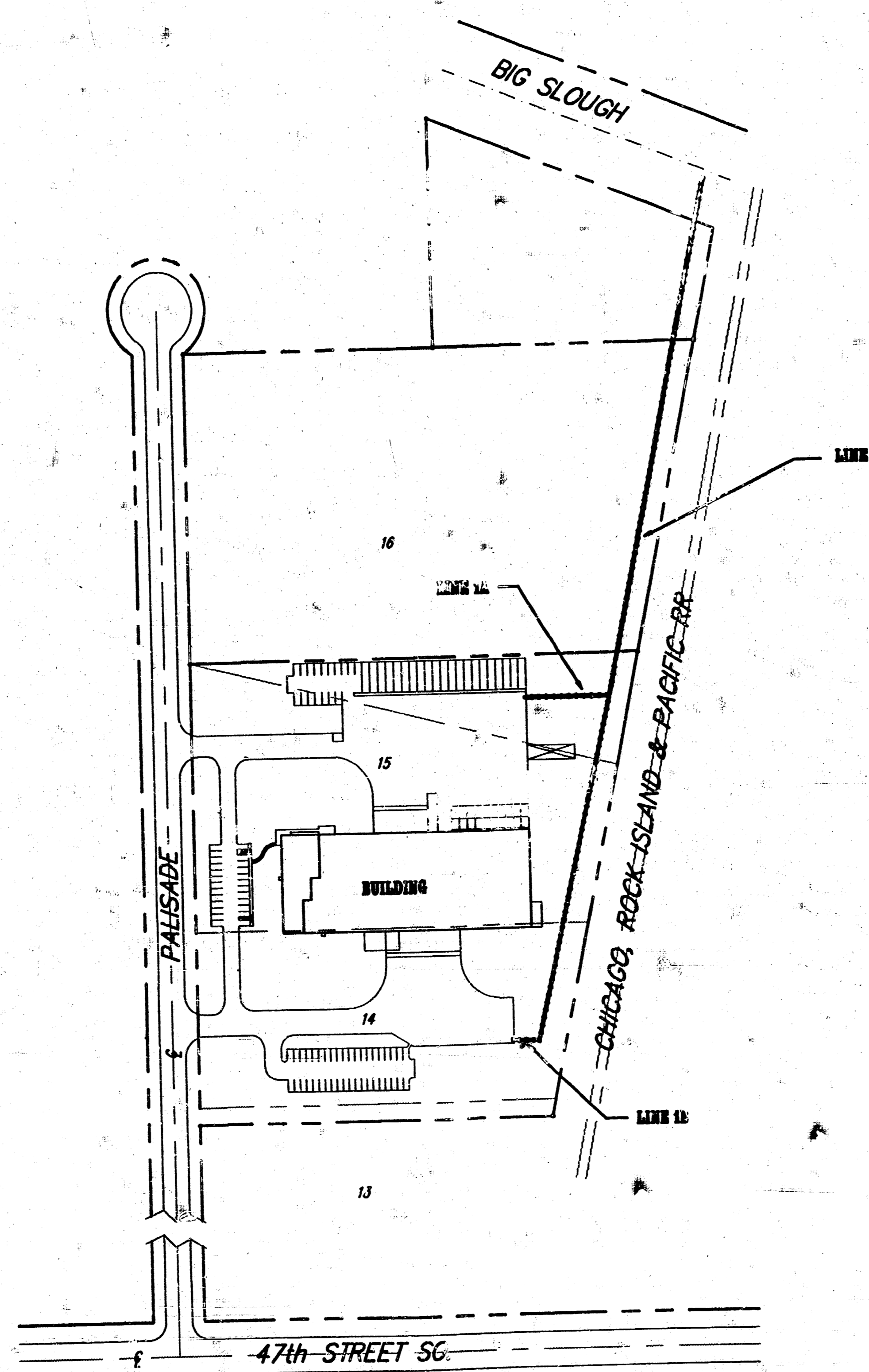
2. The Contractor shall be responsible for preserving property irons. The Contractor will be required to re-establish any property irons which are damaged or destroyed by his construction operations. Such irons shall be re-established by a licensed land surveyor in accordance with state law.

3. Existing utilities and their location, as shown on the plans, represent the best information obtainable for design. The Contractor will be required to work around existing utilities within the right-of-way which do not conflict with proposed construction.

4. Storm Sewer Pipe used on this project shall be HI-Q Corrugated Polyethylene Pipe as manufactured by Hancor, Inc. or approved equal.

5. Trees and shrubs in conflict with proposed new construction shall be removed by the Contractor with the Engineer's approval. Trees and shrubs which are not in conflict with proposed new construction shall be saved and protected from damage.

6. The Contractor shall notify the following individuals 48 hours prior to excavation operations:
 Mr. David Stuckey 524-0056 (Riverside Dmg. Dist.)
 Mr. Larry Snow 524-0491 (Williams Pipeline Co.)



BENCHMARKS

- #1 "X" Top Curb Adjacent to NW Corner Lot 16 Rock Island Industrial Park Addition Elevation = 85.14 City Datum
- #2 "X" in Shiner Approximately 50 ft South of E Drainage Channel Located @ SW cor. of Railroad Tracks Elevation = 85.37 City Datum
- #3 "X" Top Curb 75' N of SW Corner of Lot 14 Rock Island Industrial Park Addition Elevation = 87.14 City Datum

INDEX of SHEETS

TITLE SHEET	1
PLAN / PROFILE - LINE 1	2-4
PLAN / PROFILE - LINE 1A, B	5
INLET DETAILS	6-7

As Built 7-19-94

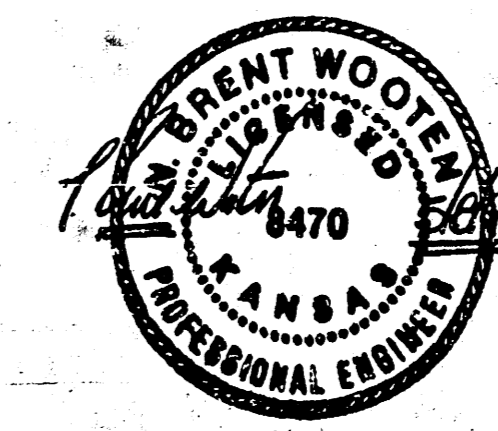
APPROVED AS NOTED
 BY RIVERSIDE DRAINAGE DISTRICT
Robert A. Hawley 5-5-94
David A. Hawley 5-6-94
Michael E. Lindebak 6 May 94

APPROVED AS NOTED
 BY CITY ENGINEER OF WICHITA

Sanitary Sewers _____
 Storm Sewers VRH 5/9/94
 Driveway Approaches _____
 Water Mains _____
 Paving _____

NOTE TO CONTRACTORS

Inspection and testing for this project is to be provided by a Licensed Consulting Engineering Firm under contract with the Owner/Developer. Said inspection to be in accordance with the City of Wichita standard construction engineering practices and certified by a Licensed Professional Engineer. No work shall be performed in dedicated easements or public right-of-way by the Contractor without such inspection nor shall any work be commenced without written authorization by the City Engineer.



BOOKED
 4-3-95
 MCB

April, 1994

BAUGHMAN COMPANY P. A.
 ENGINEERING & SURVEYING
 316/262-7271 • 315 ELLIS • WICHITA, KANSAS 67211

BENCHMARKS

#1 "□" Top Curb Adjacent to NW Corner Lot 16 Rock Island Industrial Park Addition Elevation = 85.14 City Datum

#2 Nail in Shiner Approximately 50 ft South of @ Drainage Channel Located @ SW cor. of Railroad Trestle Elevation = 89.37 City Datum

Sta. 0+13.5 Begin Line 1
Begin Construction of 24" SWS w/ Conc. End Section. Install Approx 26 S.Y. of Double Layer Conc. Bag Rip-Rap. (See Rip-Rap Detail)

Contractor Shall Reseed Levee and all area within Drainage District ROW disturbed by construction operations with wide blade fescue grass.

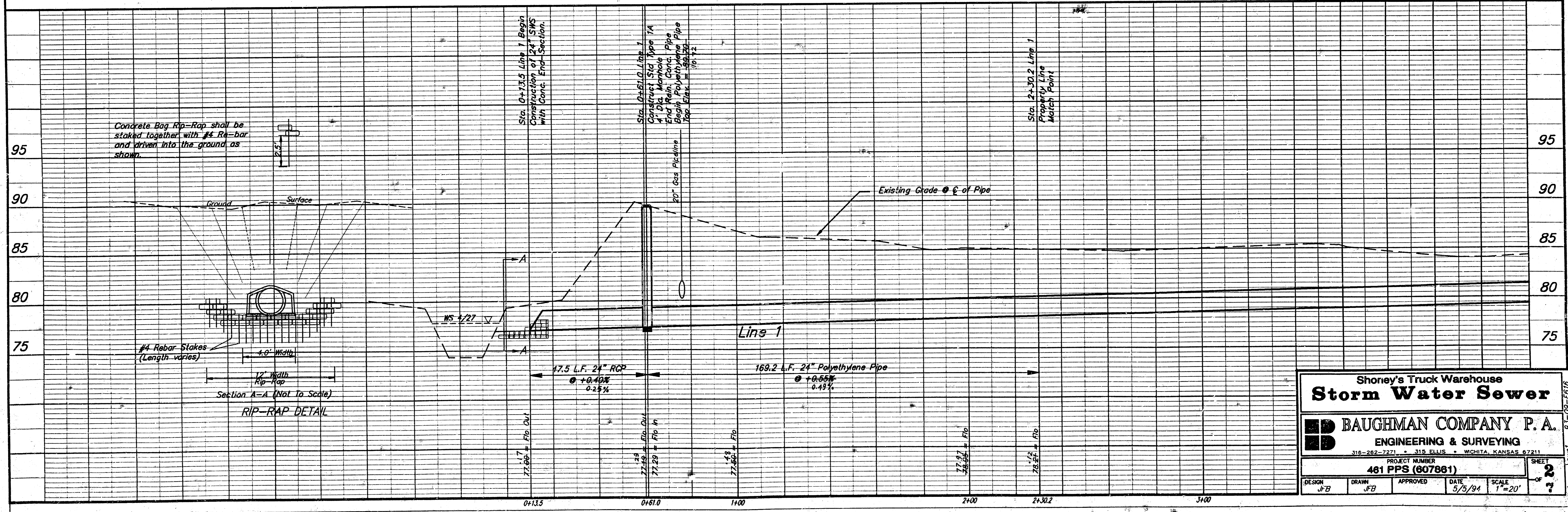
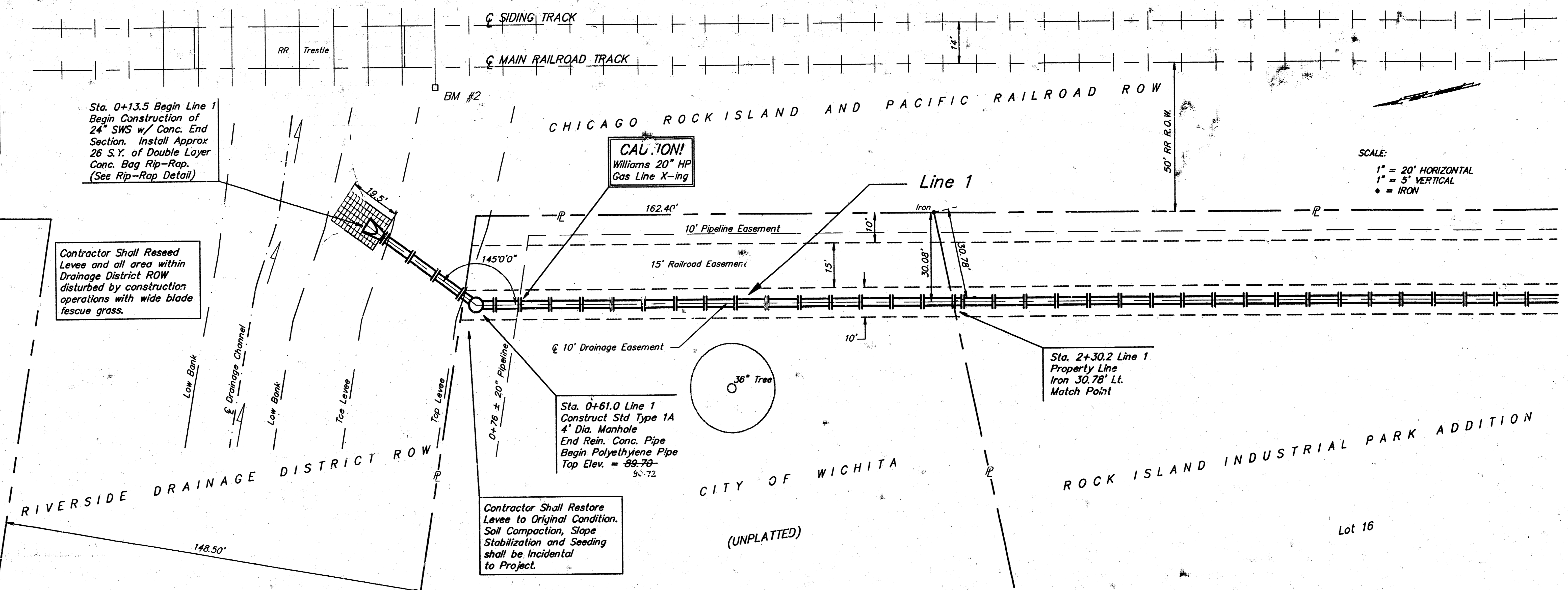
CAUTION!
Williams 20" HP Gas Line X-ing

Sta. 0+61.0 Line 1
Construct Std Type 1A 4" Dia. Manhole End Rein. Conc. Pipe Begin Polyethylene Pipe Top Elev. = 89.70-50.72

Contractor Shall Restore Levee to Original Condition. Soil Compaction, Slope Stabilization and Seeding shall be incidental to Project.

Sta. 2+30.2 Line 1
Property Line Iron 30.78' Lt. Match Point

SCALE:
1" = 20' HORIZONTAL
1" = 5' VERTICAL
● = IRON



Shoney's Truck Warehouse
Storm Water Sewer

BAUGHMAN COMPANY P.A.
ENGINEERING & SURVEYING
310-262-7271 • 310-262-7272 • WICHITA, KANSAS 67211

PROJECT NUMBER: 481 PPS (807861)

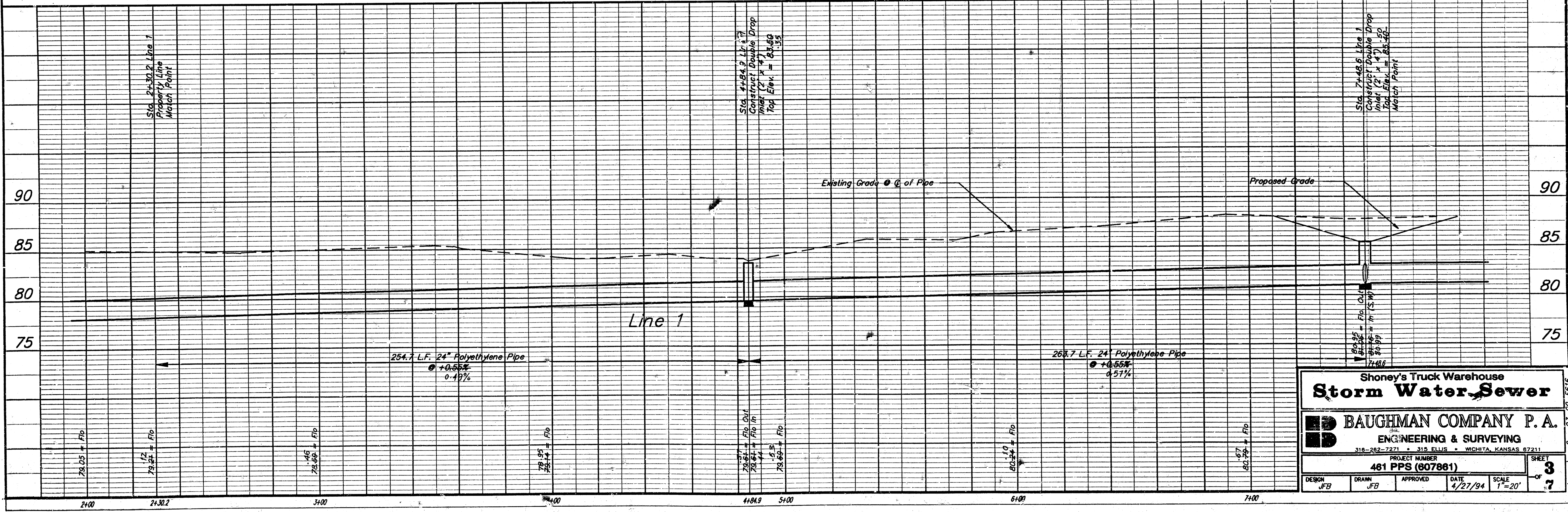
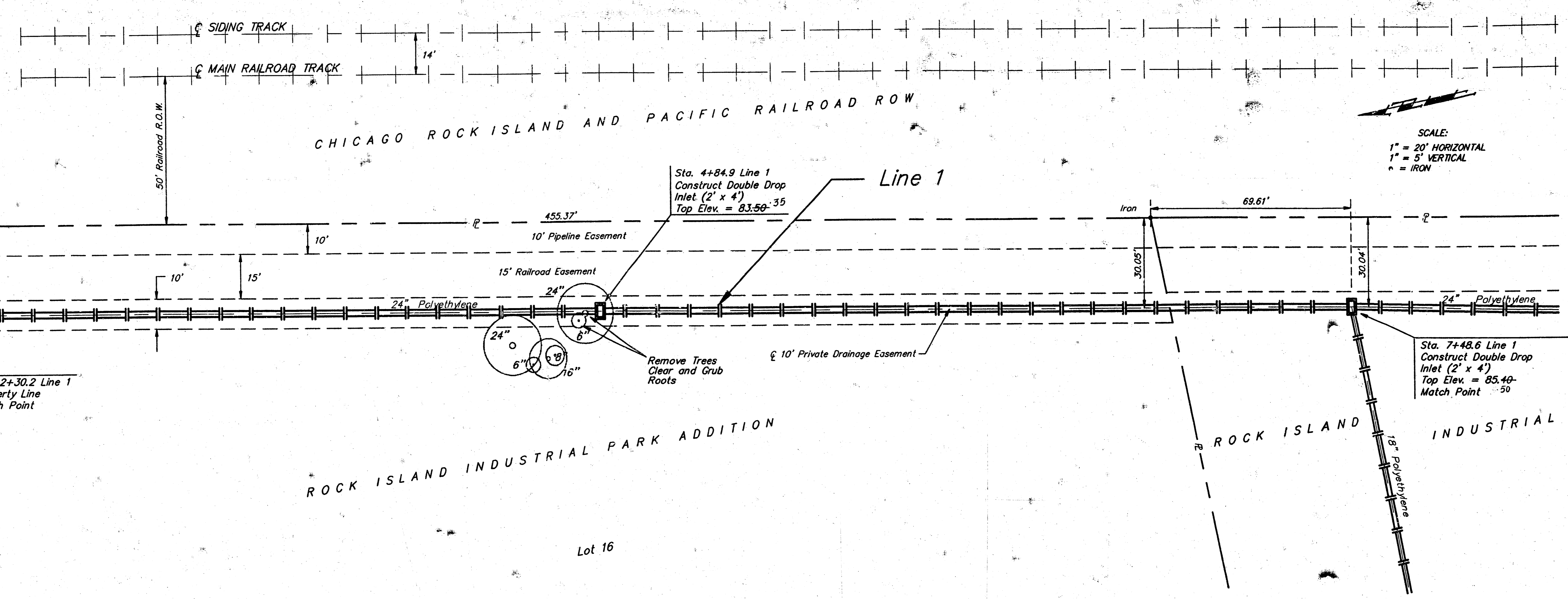
DESIGN: JFB DRAWN: JFB APPROVED: [Signature] DATE: 5/5/94 SCALE: 1"=20'

SHEET: 2 OF 2

BENCHMARKS

#1 "□" Top Curb Adjacent to NW Corner Lot 16 Rock Island Industrial Park Addition Elevation = 85.14 City Datum

#2 Nail in Shiner Approximately 50 ft South of Centerline Drainage Channel Located @ SW cor. of Railroad Trestle Elevation = 89.37 City Datum



Shoney's Truck Warehouse
Storm Water Sewer

BAUGHMAN COMPANY P.A.
 ENGINEERING & SURVEYING
 318-262-7271 • 315 ELLIS • WICHITA, KANSAS 67211

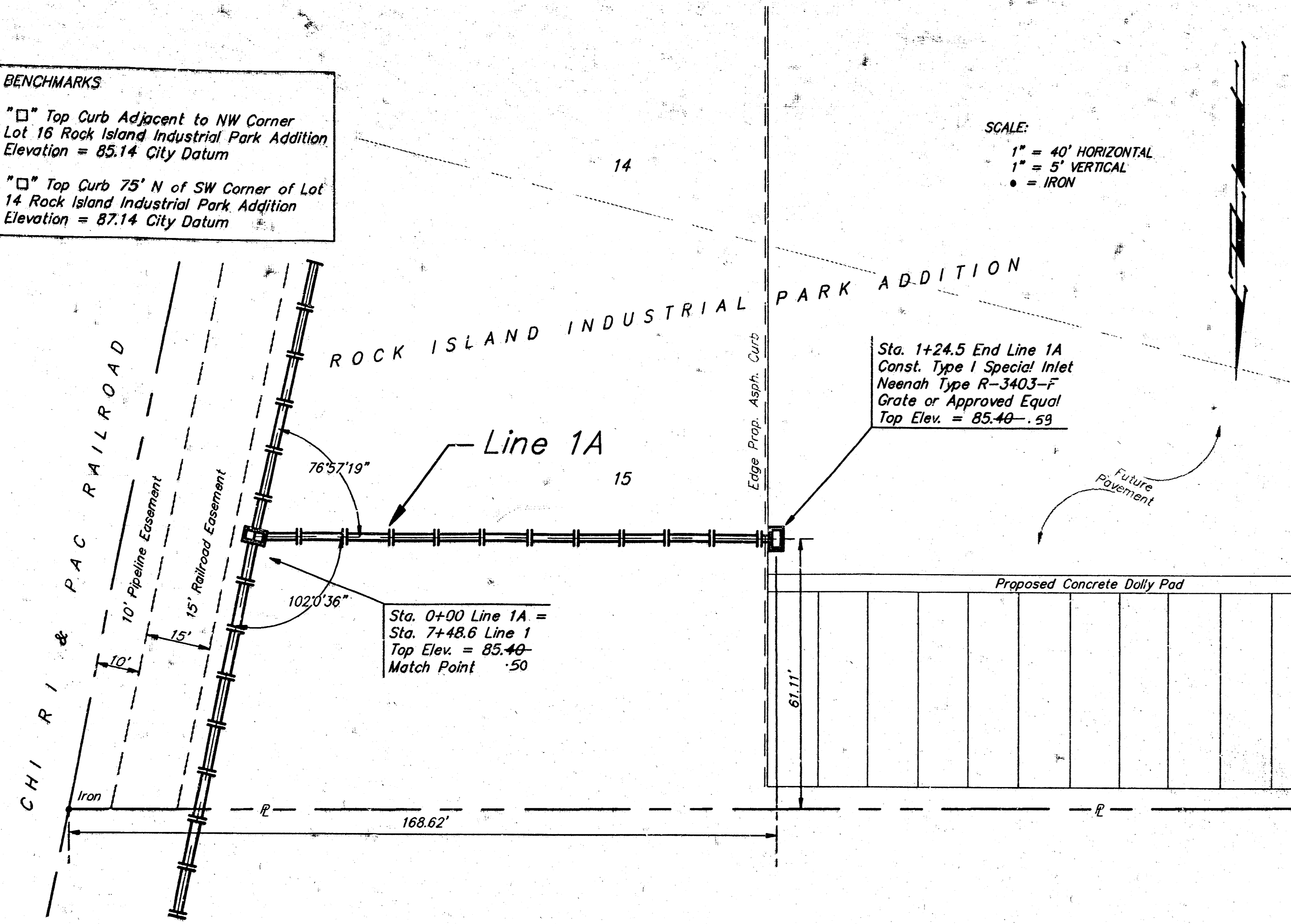
PROJECT NUMBER
461 PPS (807861)

DESIGN: JFB DRAWN: JFB APPROVED: DATE: 4/27/94 SCALE: 1"=20' SHEET: 3 OF 7

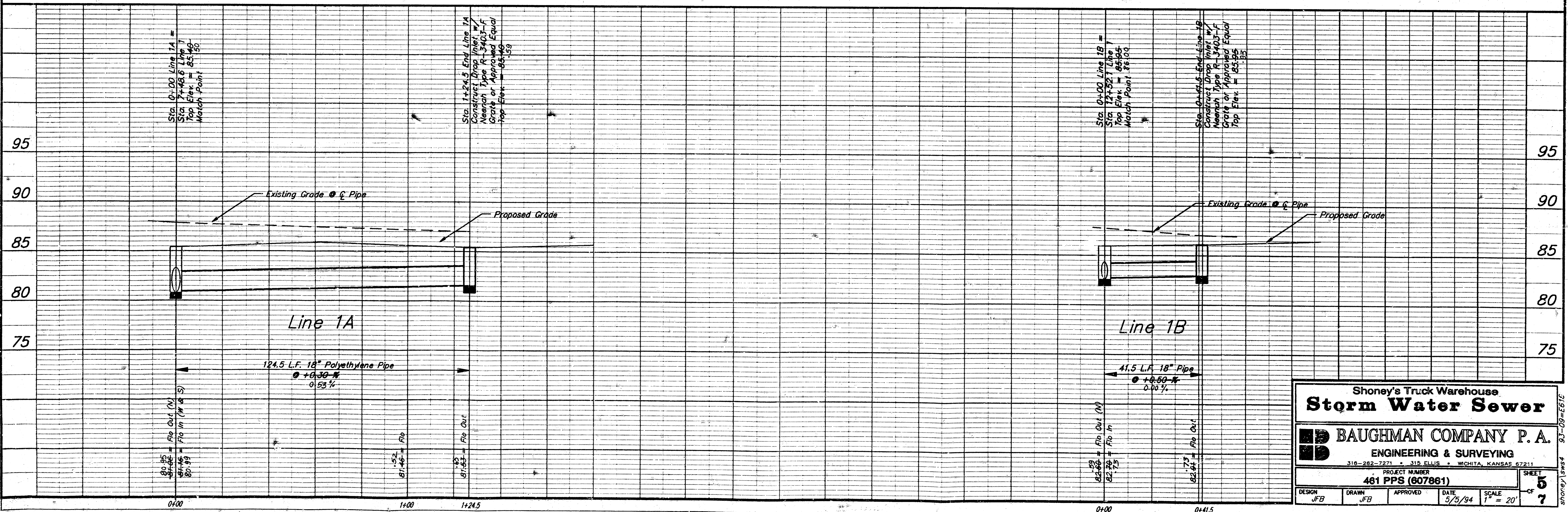
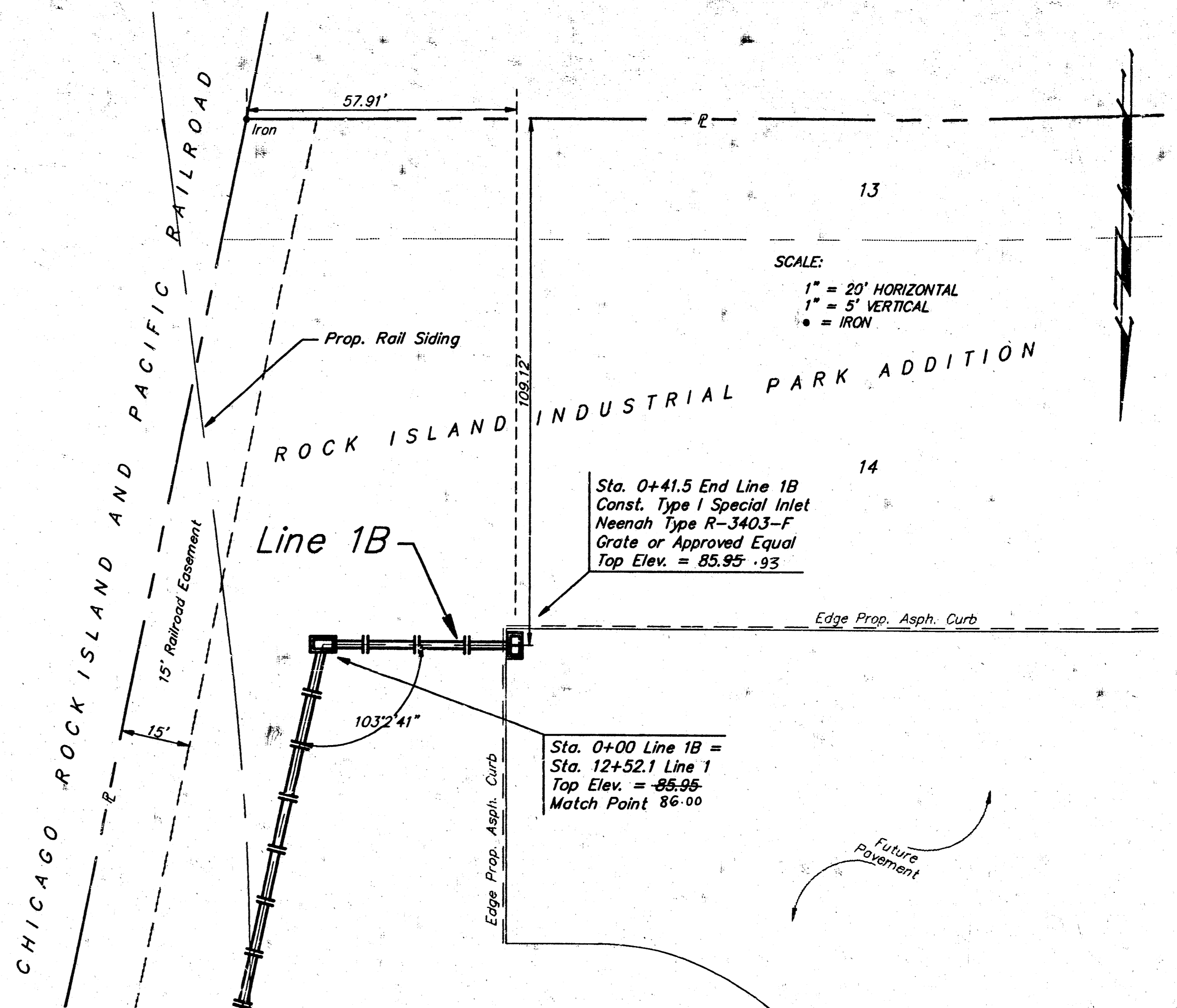
Shoney's sws2 93-09-1616

BENCHMARKS
 "□" Top Curb Adjacent to NW Corner Lot 16 Rock Island Industrial Park Addition Elevation = 85.14 City Datum
 "□" Top Curb 75' N of SW Corner of Lot 14 Rock Island Industrial Park Addition Elevation = 87.14 City Datum

SCALE:
 1" = 40' HORIZONTAL
 1" = 5' VERTICAL
 • = IRON



SCALE:
 1" = 20' HORIZONTAL
 1" = 5' VERTICAL
 • = IRON

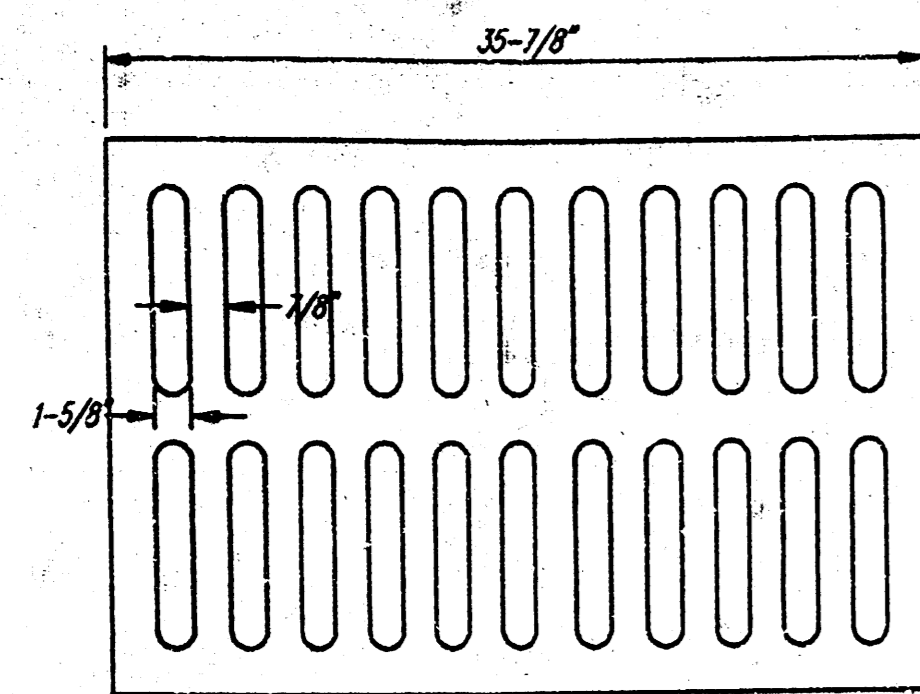


Shoney's Truck Warehouse
Storm Water Sewer

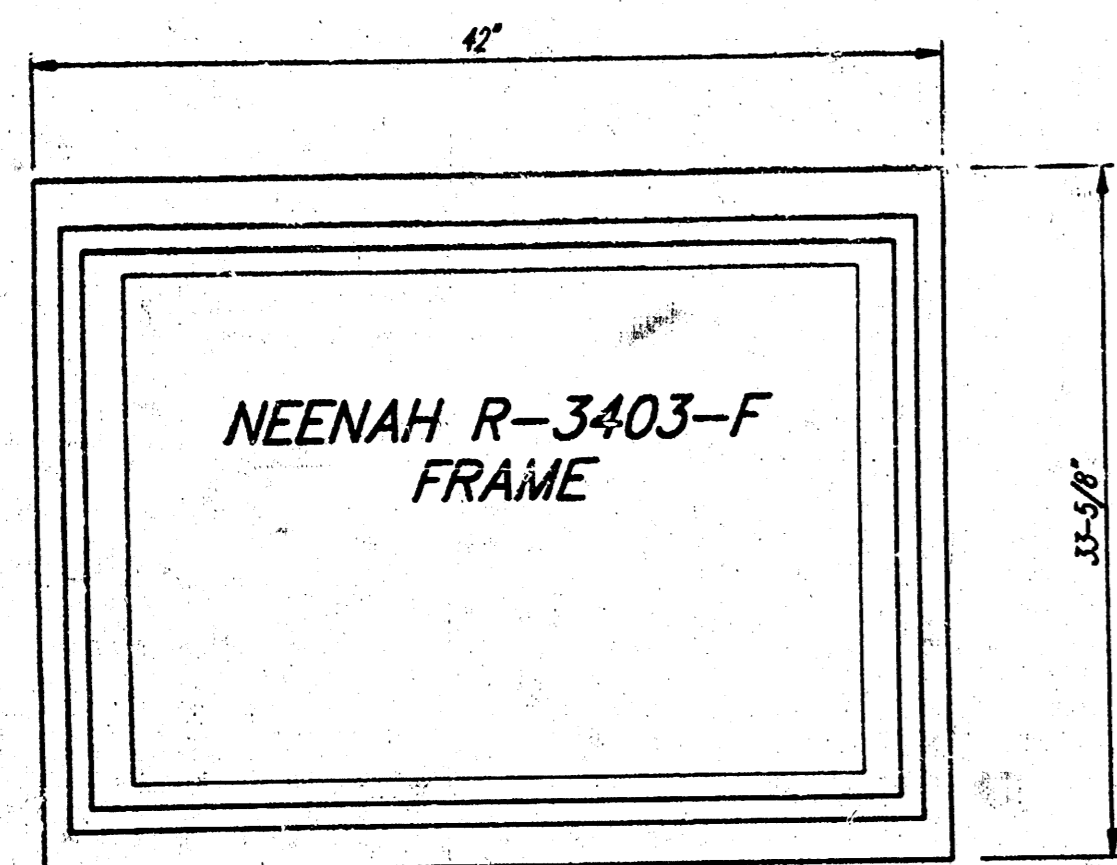
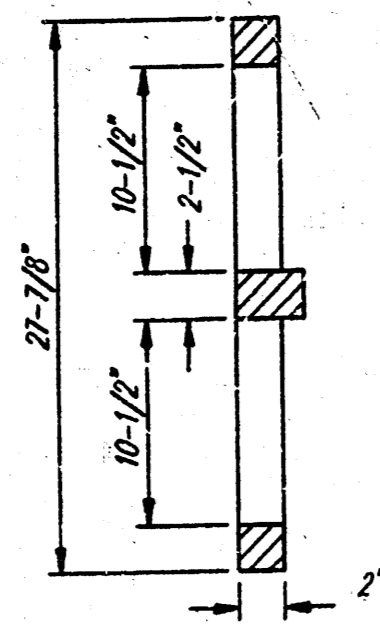
BAUGHMAN COMPANY P. A.
 ENGINEERING & SURVEYING
 318-282-7221 • 315 ELLIS • WICHITA, KANSAS 67211

PROJECT NUMBER
481 PPS (607861)

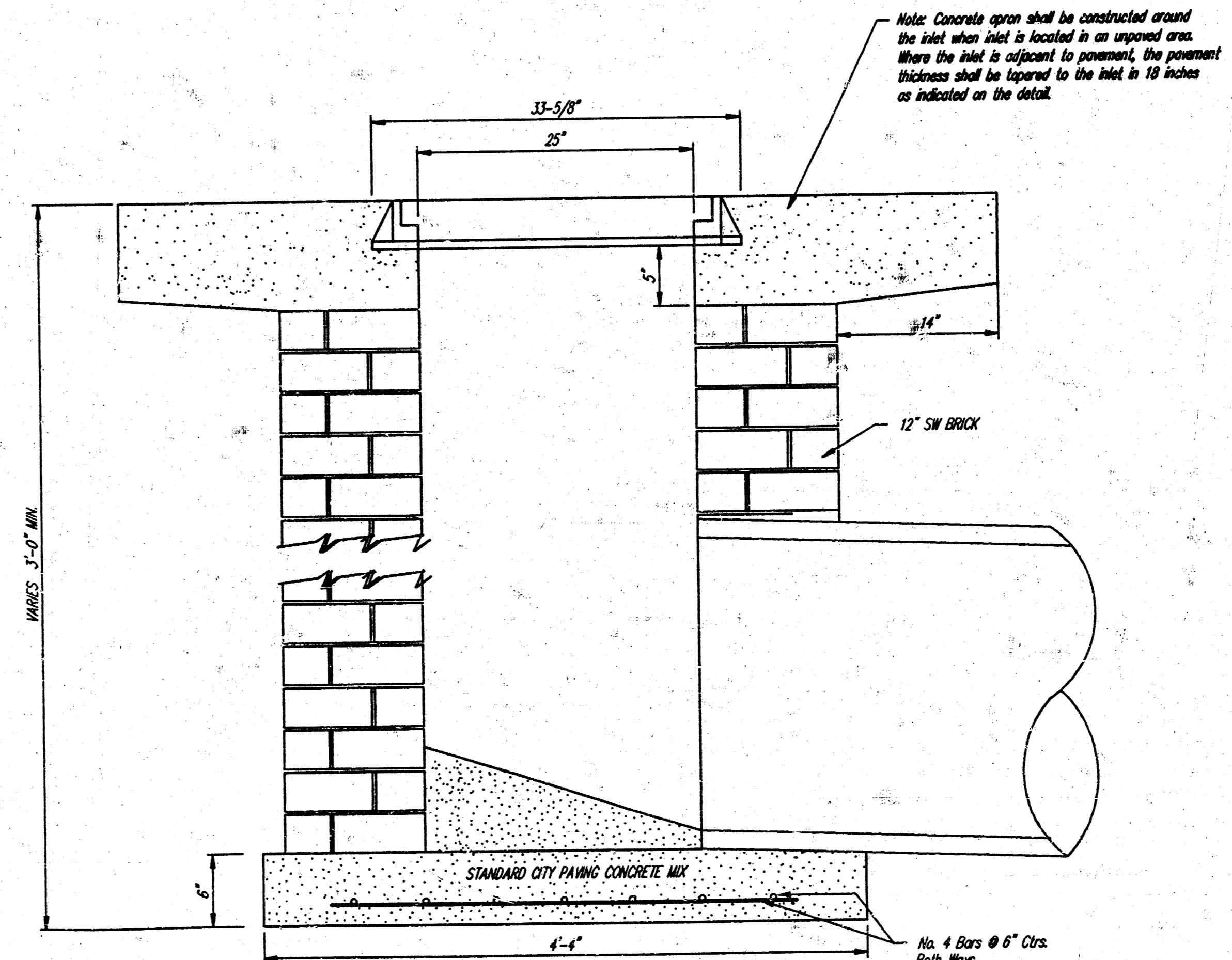
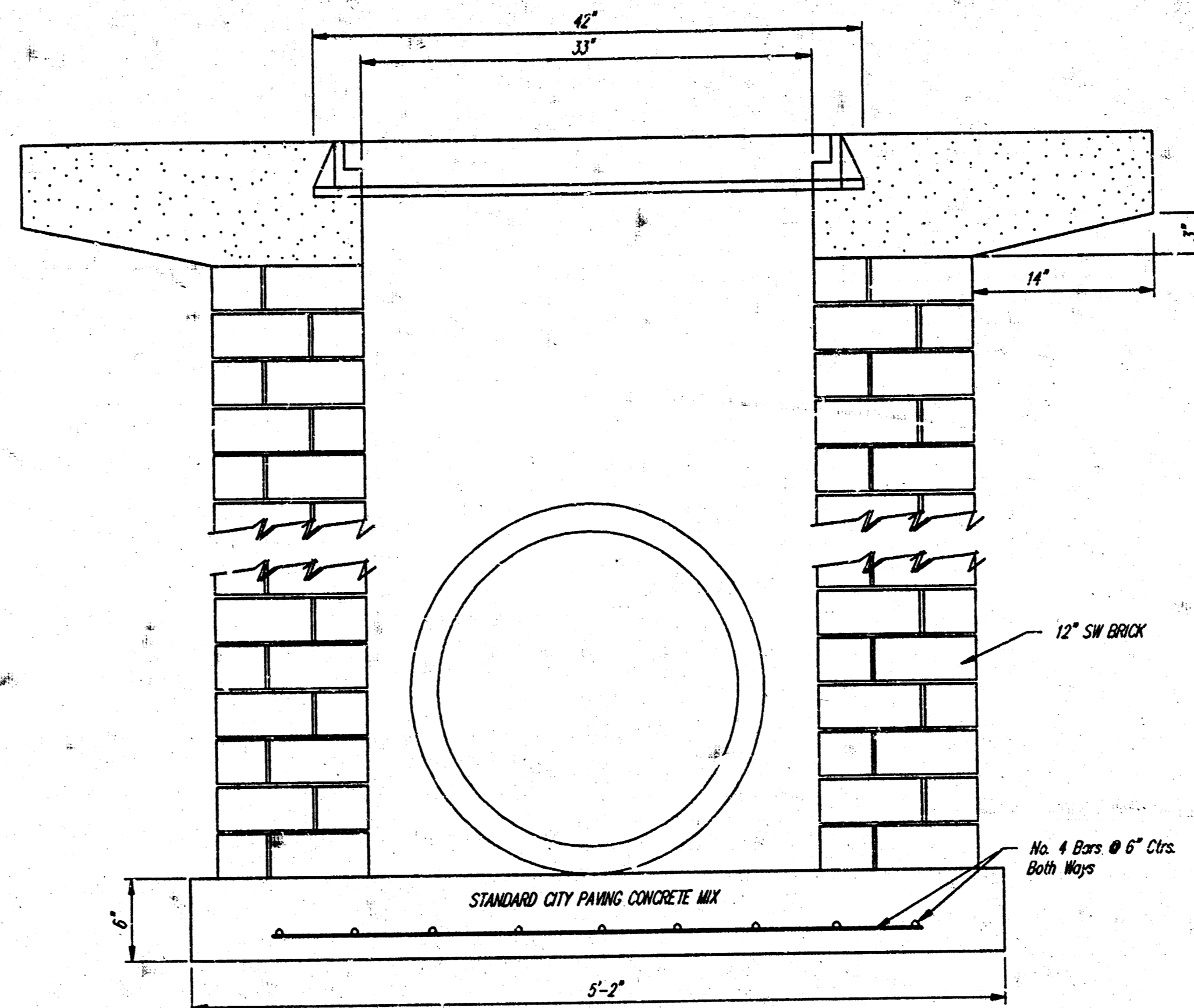
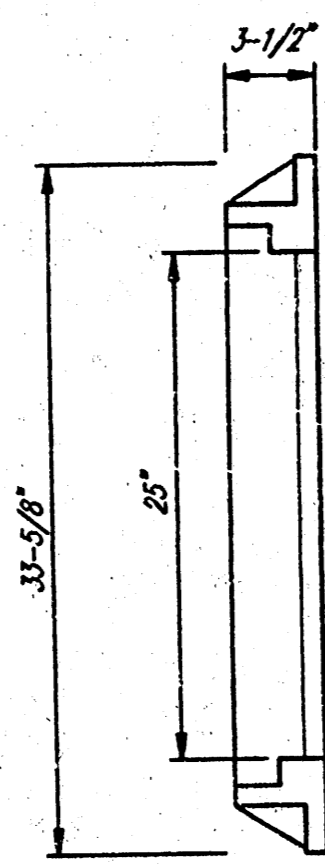
DESIGN: JFB DRAWN: JFB APPROVED: [Signature] DATE: 5/5/94 SCALE: 1" = 20' SHEET: 5 OF 7



NEENAH R-3403-F GRATE



NEENAH R-3403-F FRAME



Note: Concrete apron shall be constructed around the inlet when inlet is located in an unpaved area. Where the inlet is adjacent to pavement, the pavement thickness shall be tapered to the inlet in 10 inches as indicated on the detail.

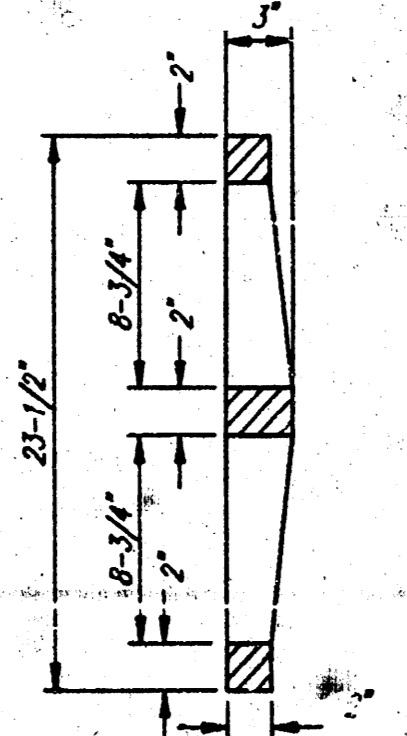
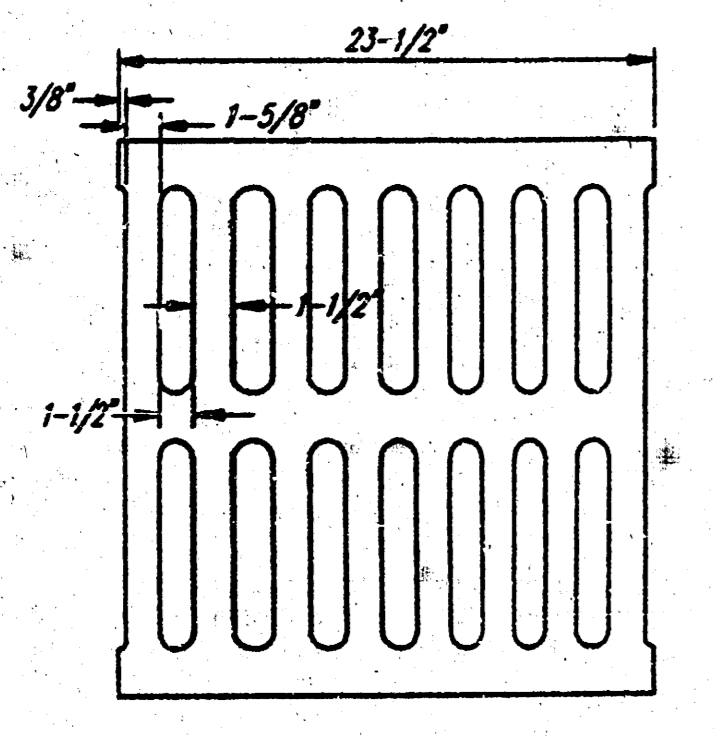
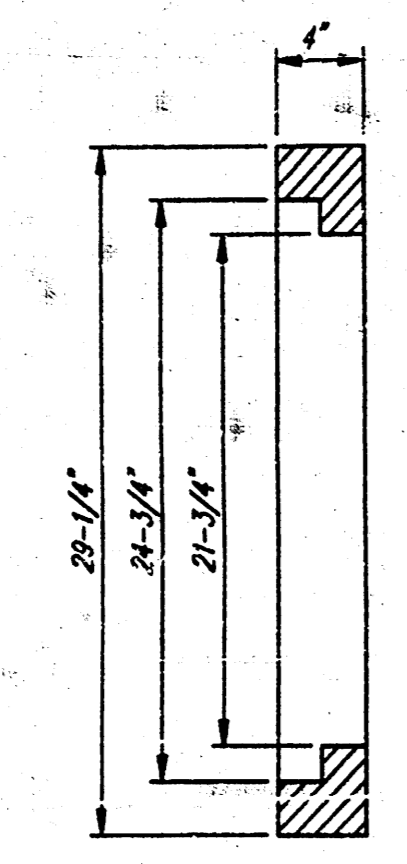
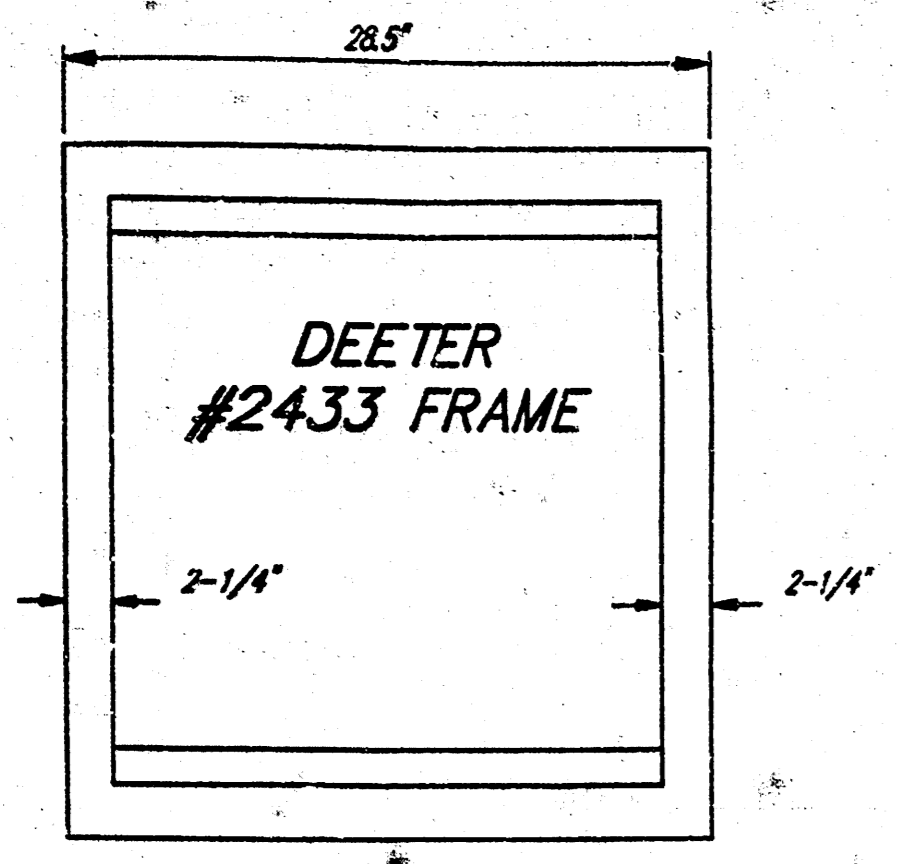
Drop Inlet Details
Type I Special

BAUGHMAN COMPANY P. A.
ENGINEERING & SURVEYING
318-262-7271 • 315 ELLIS • MONTELA, KANSAS 67211

PROJECT NUMBER
461 PPS (807861)

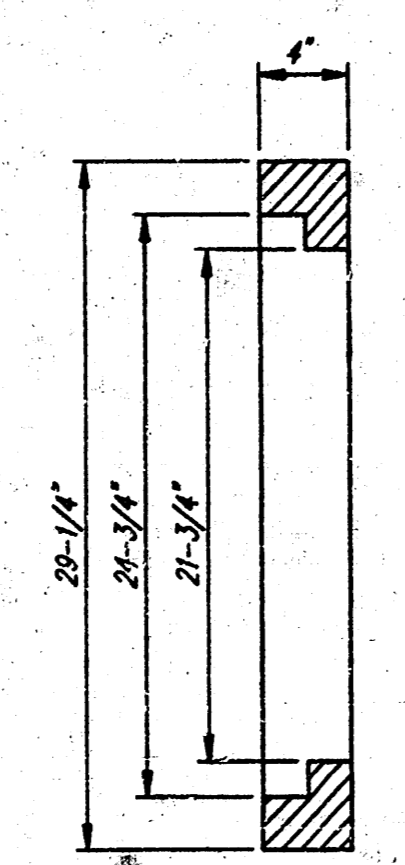
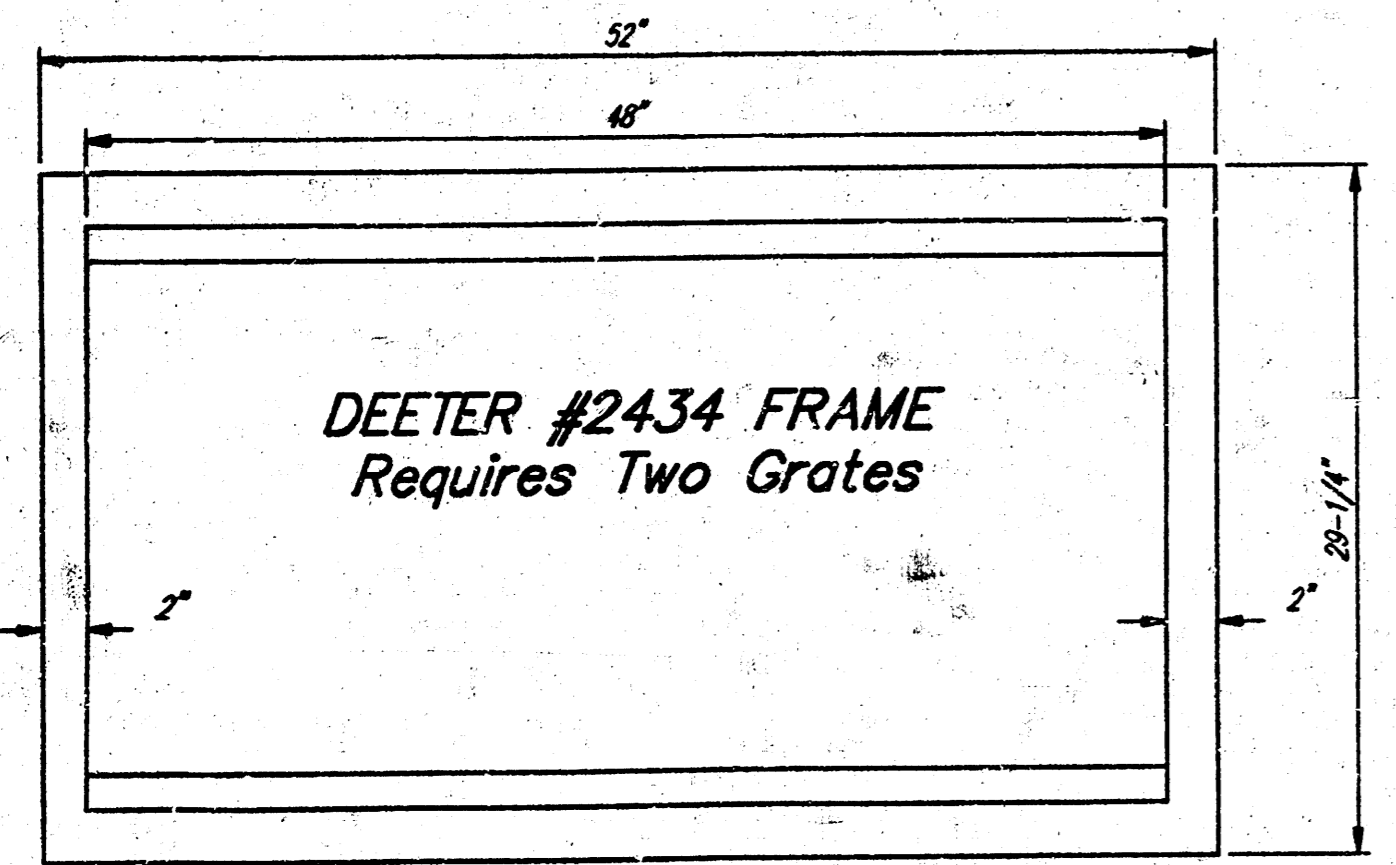
DESIGN JFB	DRAWN JFB	APPROVED	DATE 5/5/94	SCALE NONE	SHEET 6 OF 7
---------------	--------------	----------	----------------	---------------	-----------------------

shoney/loramini 93-09-1616



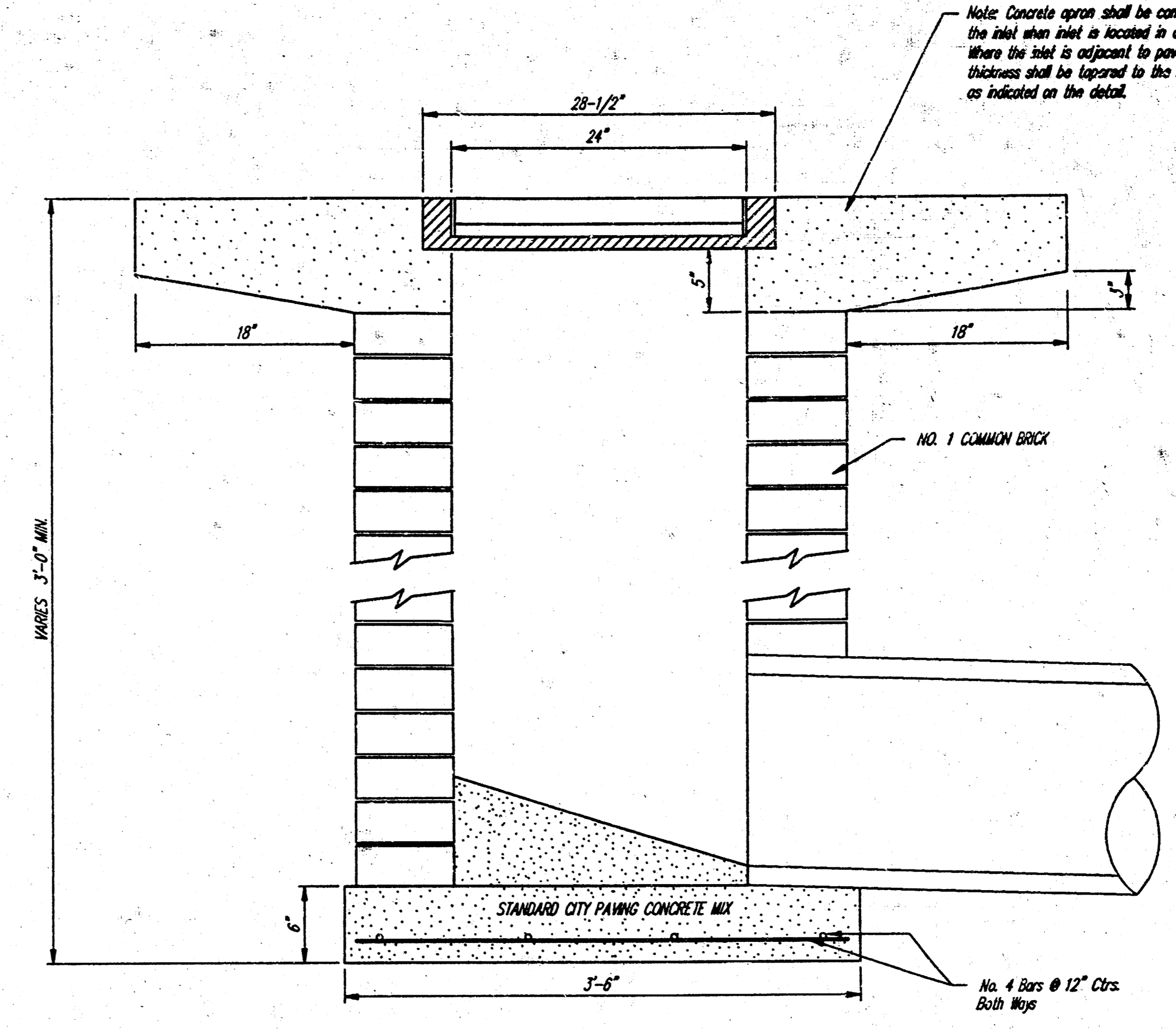
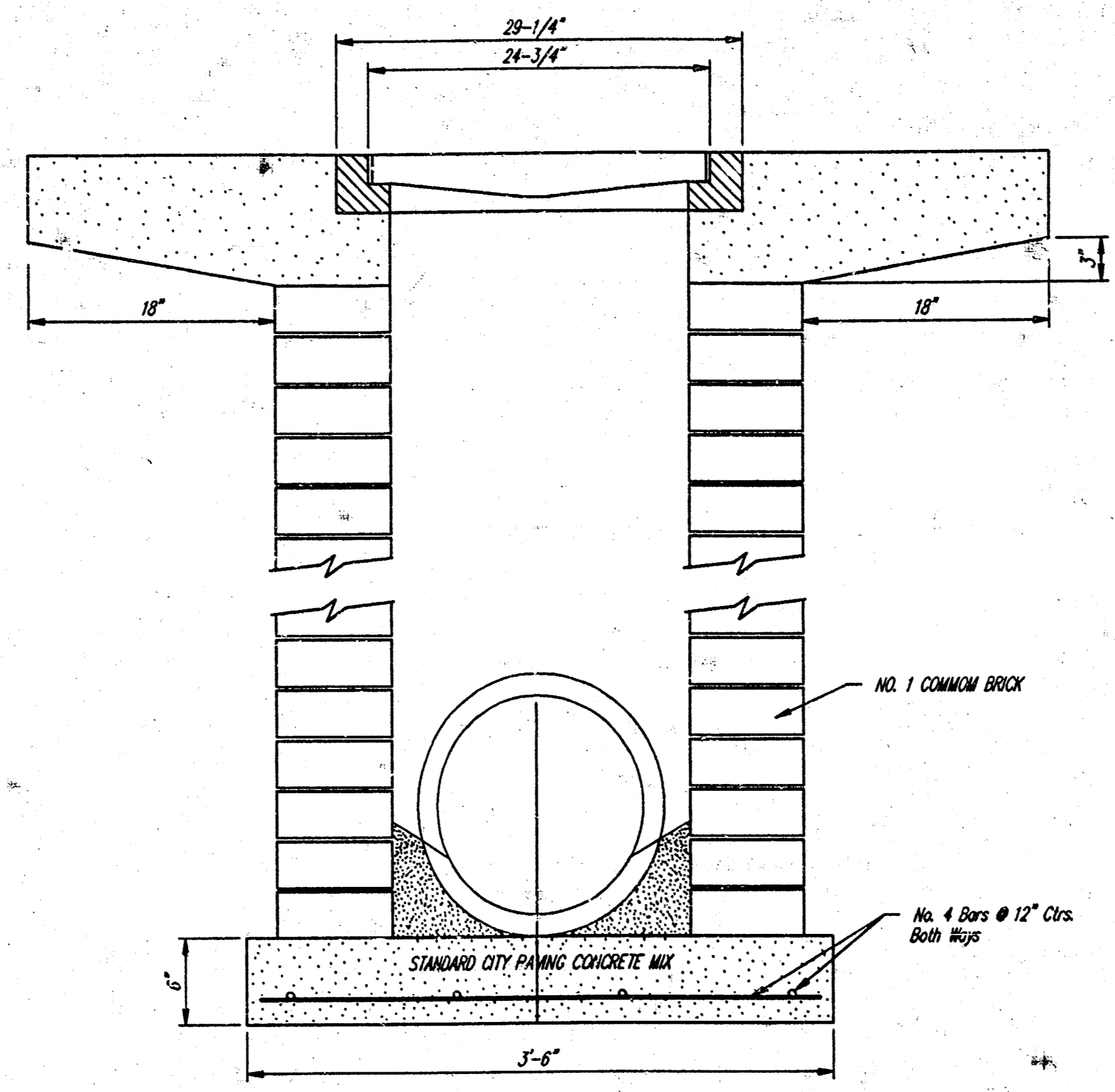
DEETER #2433 GRATE

24" x 24" Frame and Grate Detail

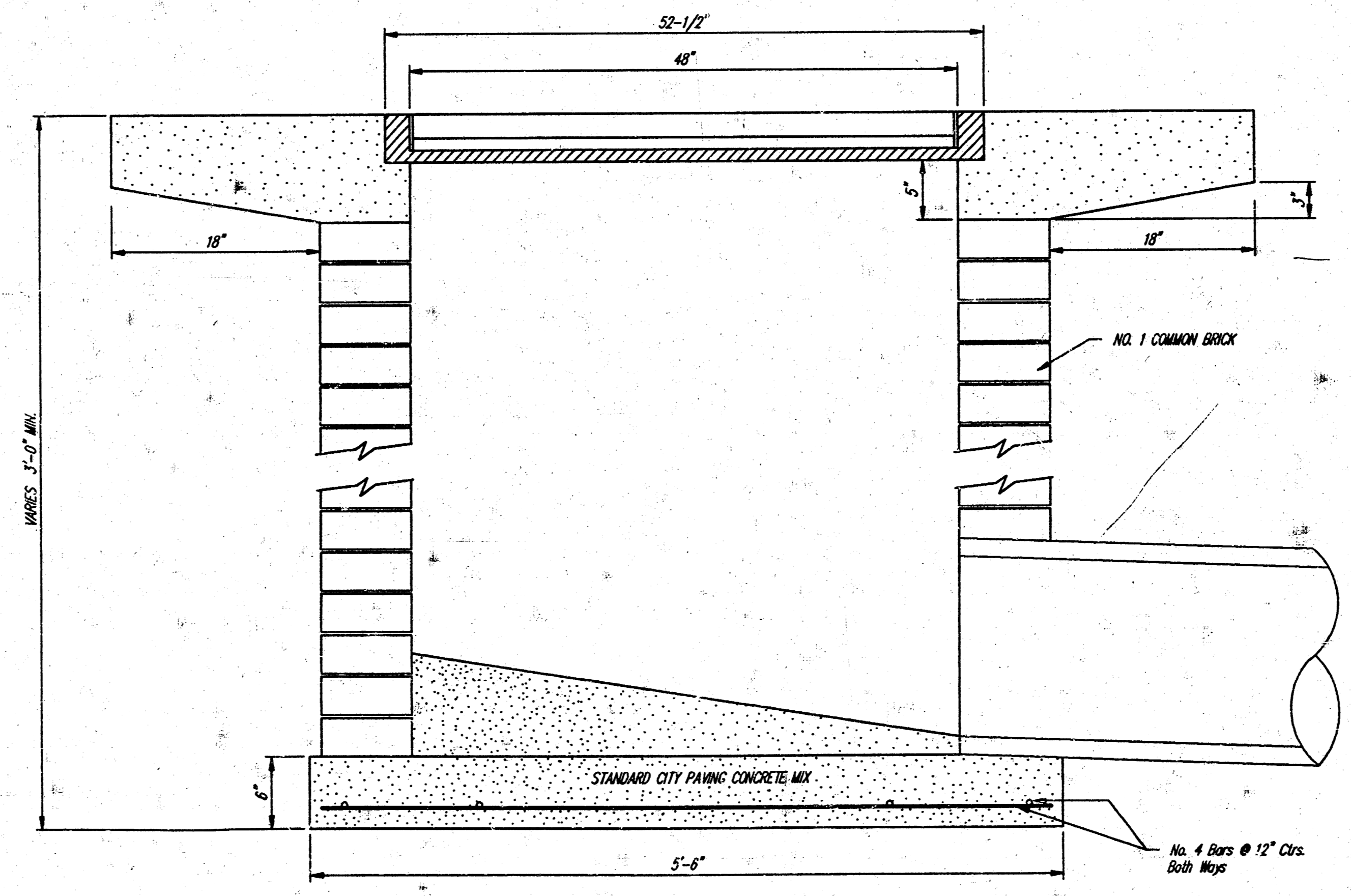


DEETER #2434 FRAME
Requires Two Grates

Double 24" x 24" Frame Detail



Note: Concrete apron shall be constructed around the inlet when inlet is located in an unimproved area. Where the inlet is adjacent to pavement, the pavement thickness shall be tapered to the inlet in 18 inches as indicated on the detail.



DROP INLET DETAILS					
BAUGHMAN COMPANY P. A. SURVEYING & ENGINEERING 316/262-7271 • 315 ELLIS • WICHITA, KANSAS 67211					REV.
PROJECT NUMBER 461 PPS (607861)					SHEET 7
DESIGN	DRAWN	APPROVED	DATE	SCALE	OF 7