

NOTE - Ctr. Of 2'x4' Drop Inlet Is 87.5' North And 352.5' West Of S.E. Cor. Of Lot 8, Blk. 1, Southwest Ind'l. Add.

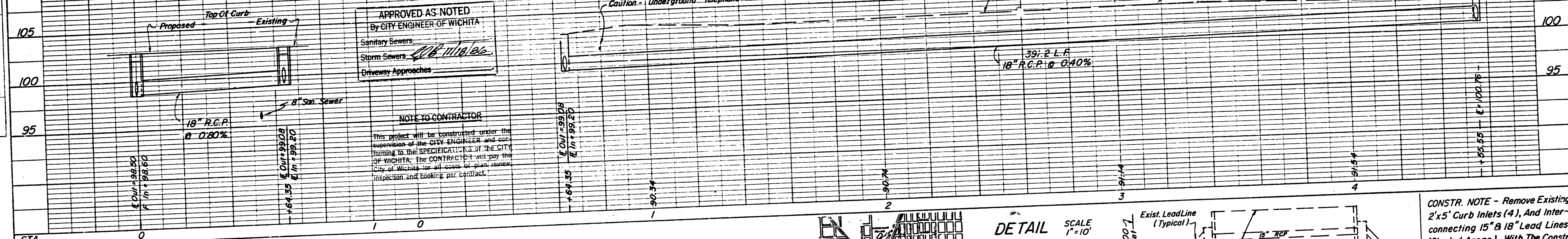
STA. 4+55.55 - CONST. STD. 2'x4' DROP INLET
 Grate Elev. = 104.70
 E. In = E. Out = 100.76
 Install 391.2 L.F. 18" R.C.P. (S.E.)
 Install 175.0 L.F. 18" R.C.P. (N.)

THE CONTRACTOR SHALL BE RESPONSIBLE FOR PRESERVING PROPERTY IRONS. THE CONTRACTOR SHALL BE REQUIRED TO RE-ESTABLISH ANY PROPERTY IRONS WHICH ARE DAMAGED OR DESTROYED BY HIS CONSTRUCTION OPERATIONS. SUCH IRONS SHALL BE RE-ESTABLISHED BY A LICENSED LAND SURVEYOR OR A LICENSED PROFESSIONAL ENGINEER IN ACCORDANCE WITH STATE LAWS.

Benchmark -
 Top of S. Rim of Manhole, 8' S. & 8' E. of the S.E. Cor. Lot 8, Blk. 1, Southwest Industrial Add.
 Elev. 103.63 City Datum.

STA. 0+64.35 - E. Inlet
 CONST. STD. TYPE 1 INLET,
 W=4'-4", T.C.=102.85
 Install 60.0 L.F. 18" R.C.P. (S)
 E. Out (S)=99.08
 E. In (N.W.)=99.20

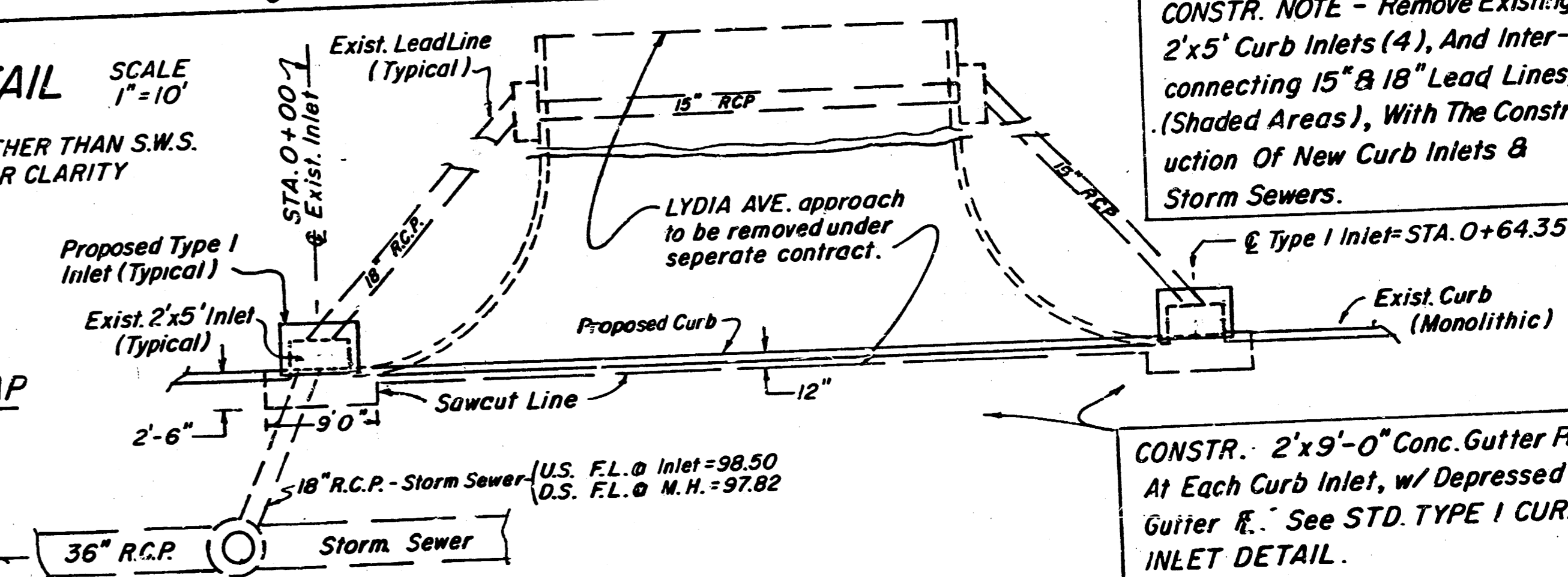
STA. 0+100 - E. Exist. Curb Inlet
 BEGIN CONSTRUCTION - Remove
 Exist. 2'x5' Curb Inlet (See Detail)
 CONST. STD. TYPE 1 INLET,
 W=4'-4", E. In (N)=98.60
 E. Out (E)=98.50 (Existing)
 T.C.=102.78



APPROVED AS NOTED
 By CITY ENGINEER OF WICHITA
 Sanitary Sewers
 Storm Sewers
 Driveway Approaches

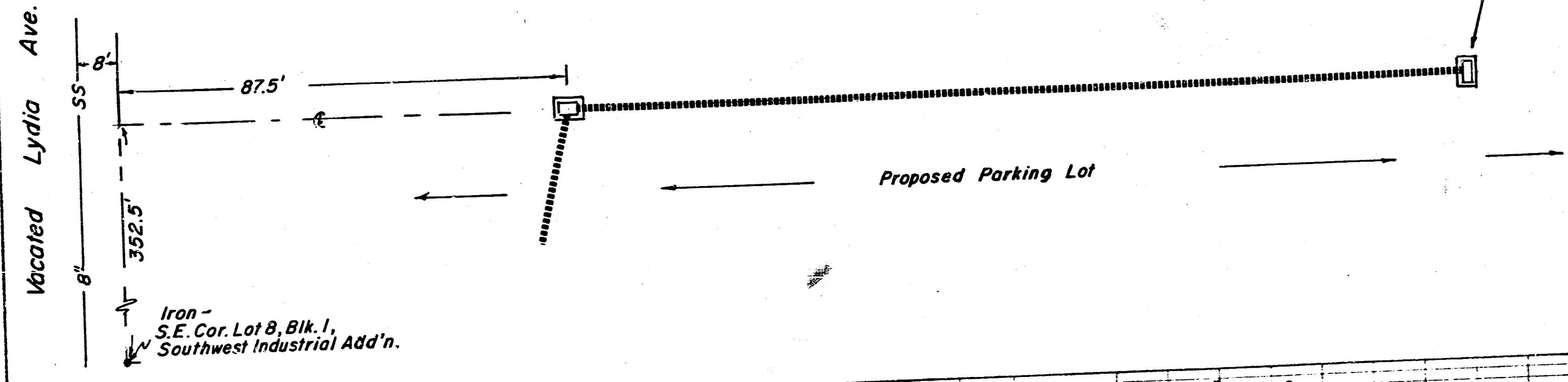
NOTE TO CONTRACTOR
 This project will be constructed under the supervision of the CITY ENGINEER and conforming to the SPECIFICATIONS OF THE CITY OF WICHITA. THE CONTRACTOR will pay the City of Wichita for all costs of plan review, inspection and taking per contract.

DETAIL SCALE 1"=10'



CONSTR. NOTE - Remove Existing 2'x5' Curb Inlets (4), And Interconnecting 15" & 18" Lead Lines, (Shaded Areas), With The Construction Of New Curb Inlets & Storm Sewers.

CONSTR. - 2'x9'-0" Conc. Gutter Pan, At Each Curb Inlet, w/ Depressed Gutter R. See STD. TYPE 1 CURB INLET DETAIL.



Private Project No. 468-76-245-80001-000-000-095
PRIVATE STORM WATER SEWER
 IN
 BLOCK 1
 SOUTHWEST INDUSTRIAL ADDITION
 FOR
 BUILDERS COMMERCIALS, INC.

MOEHRING & ASSOCIATES
 CONSULTING ENGINEERS
 WICHITA



NOV. 15, 1966
 Rev. NOV. 15, 1966
 SHEET 1 OF 3

FILMED FROM THE BEST AVAILABLE COPY

