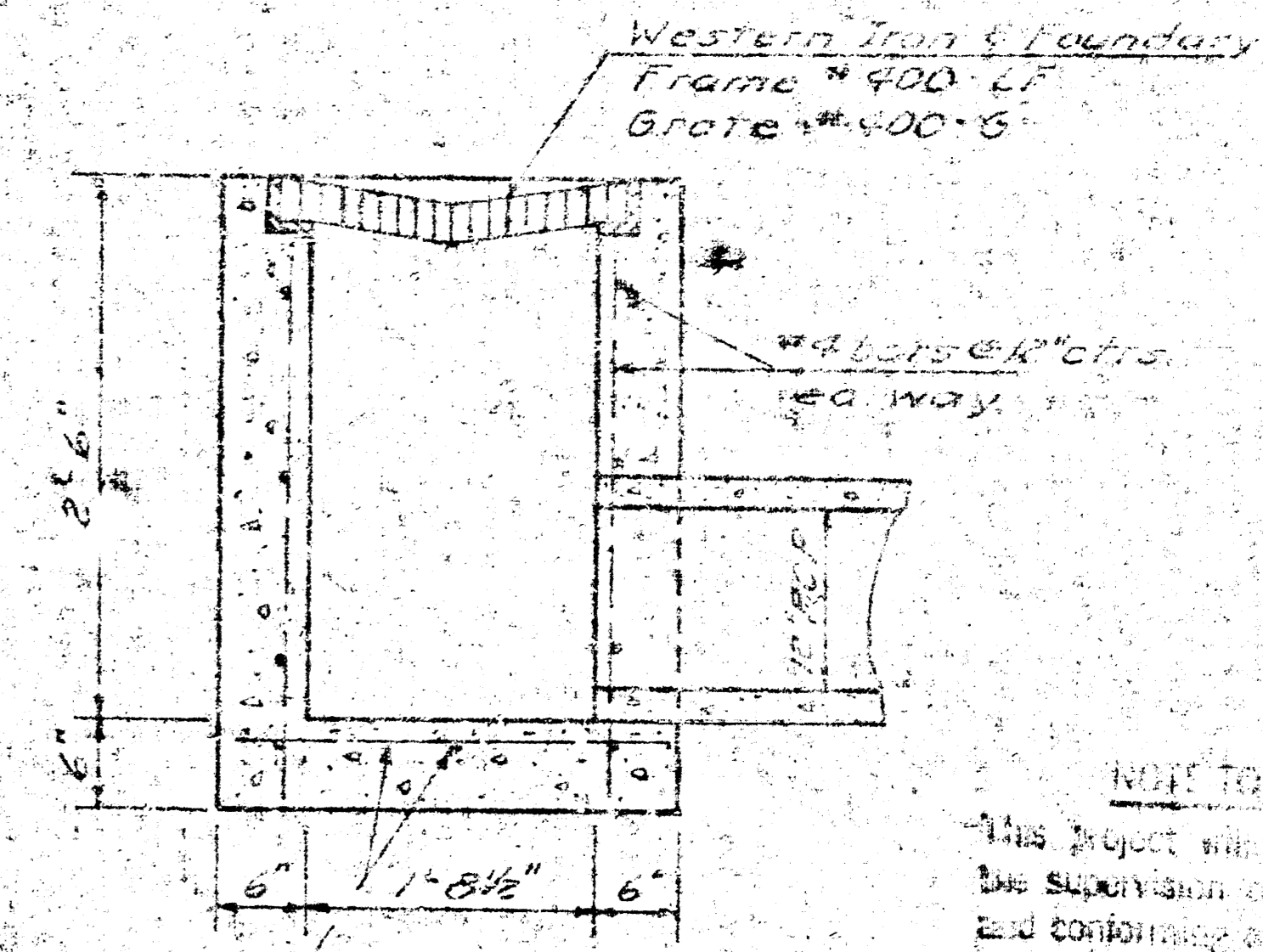
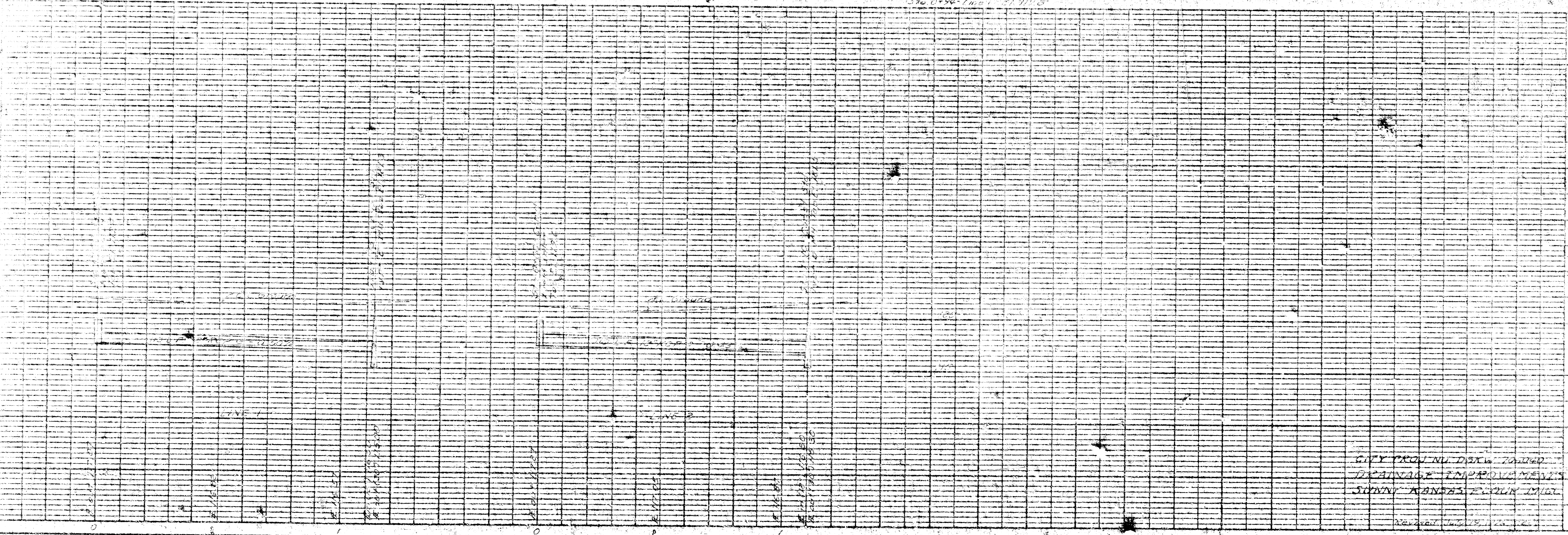


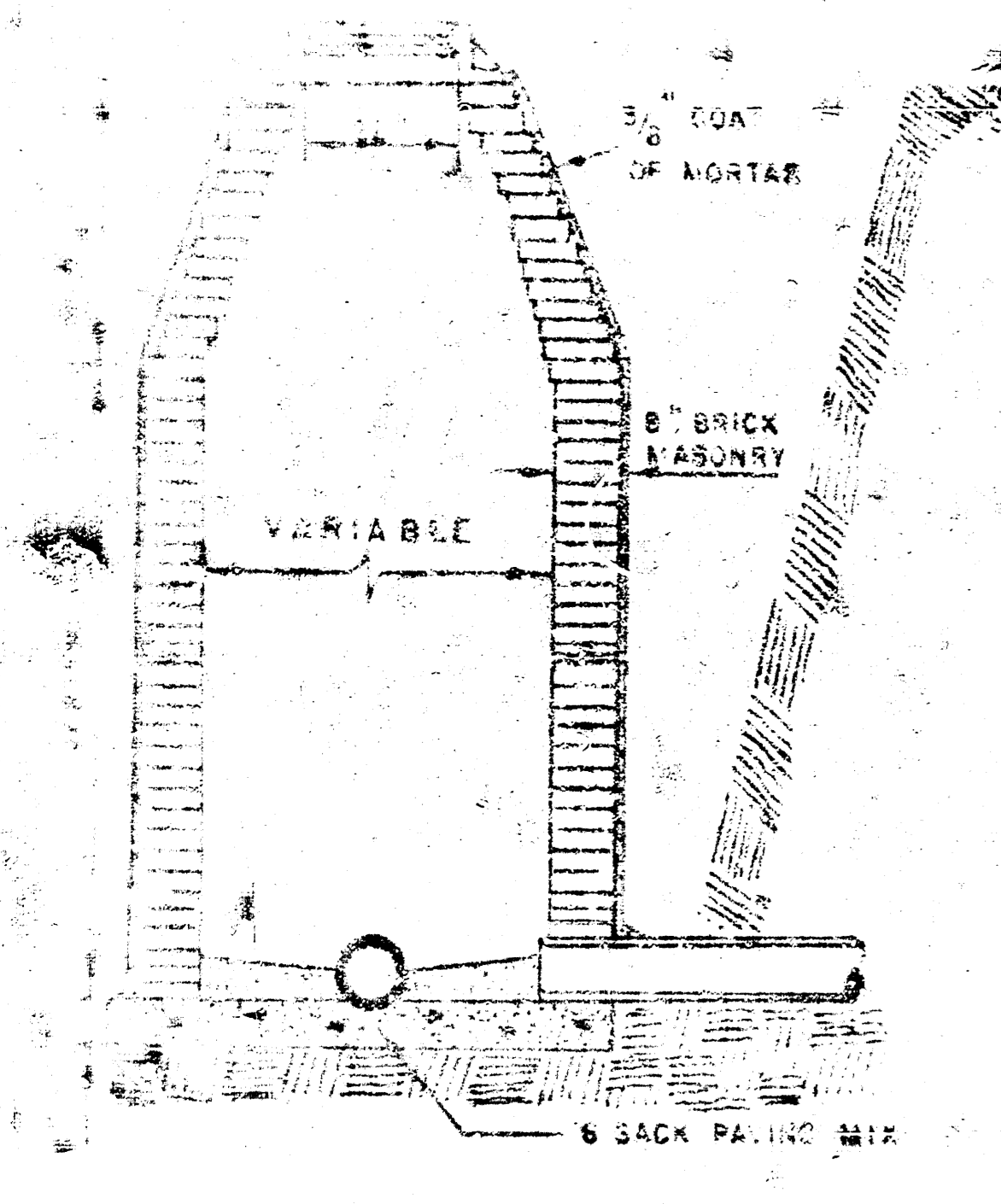
7-12-76  
 APPROVED AS NOTED  
 By CITY ENGINEER OF WICHITA  
 Sanitary Sewers  
 Storm Sewers  
 Driveway Approaches



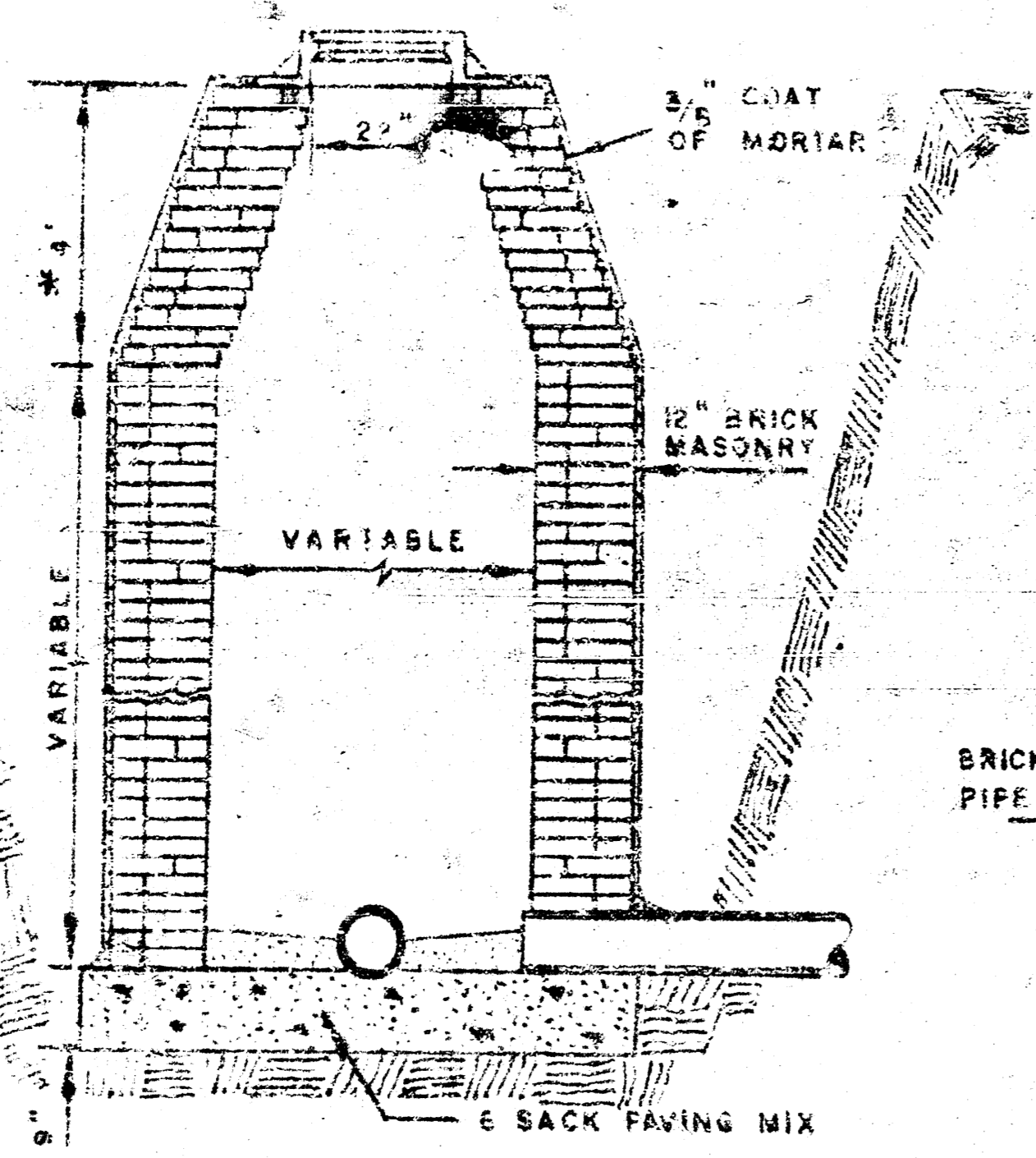
NOTE TO CONTRACTOR  
 This project will be constructed under the supervision of the City Engineer and conforming to the specifications of the CITY ENGINEER. THE CONTRACTOR will be responsible for all costs of inspection.



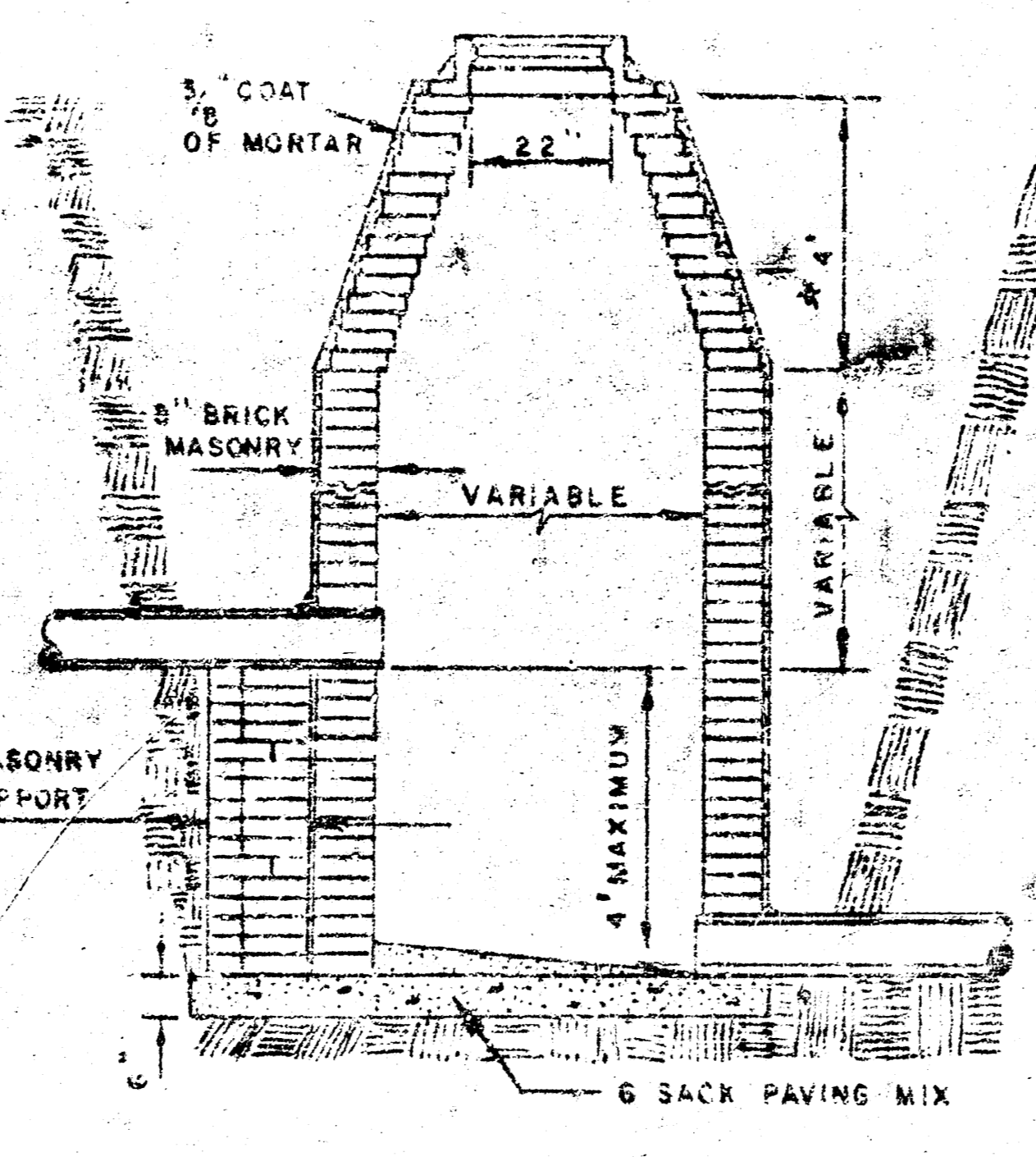
GREY PAVEMENT DISCH. TO  
 DRAINAGE IMPROVEMENTS  
 SUNNY KANSAS PLUM MITL



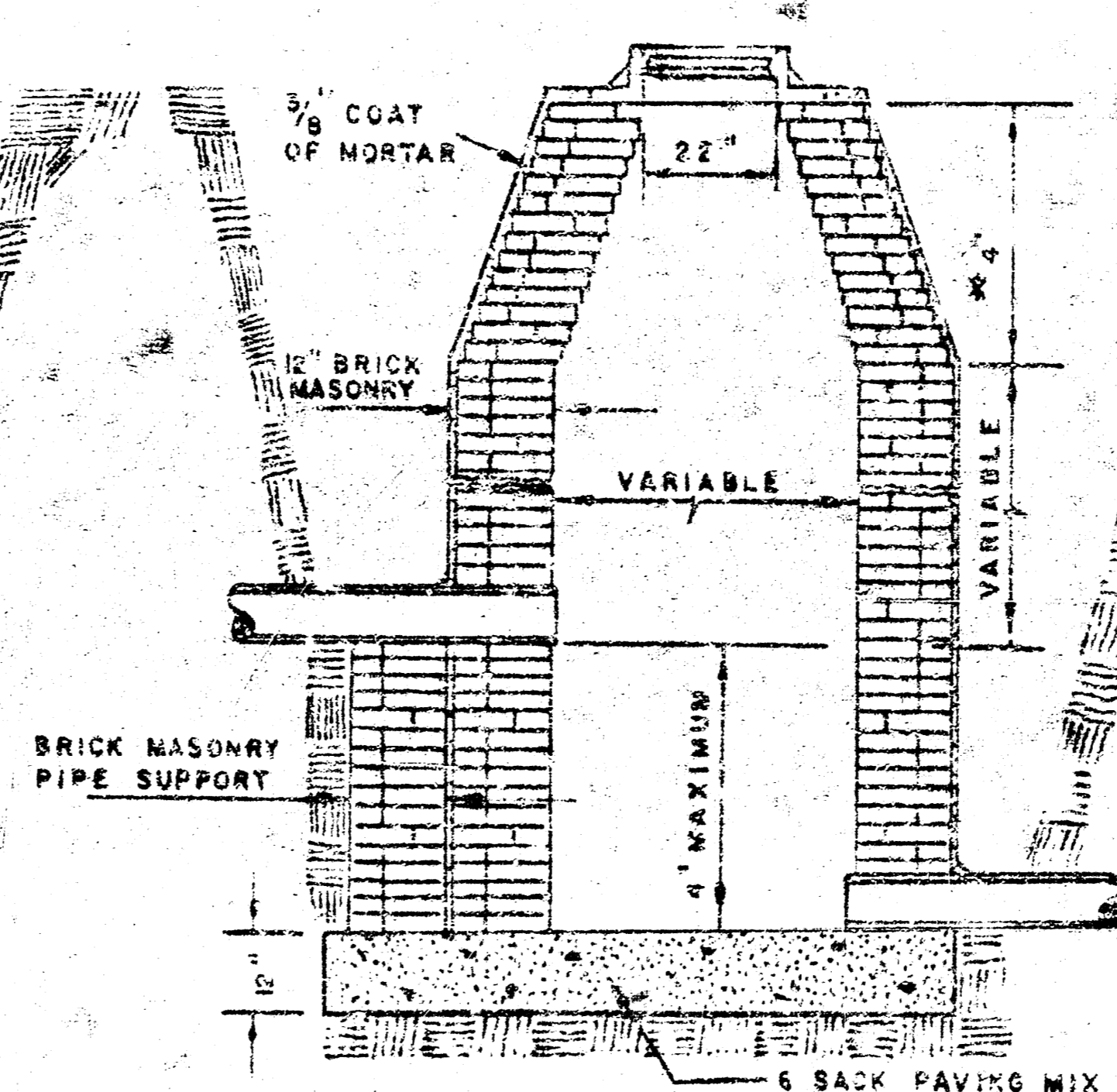
STANDARD MANHOLE  
TYPE "A"



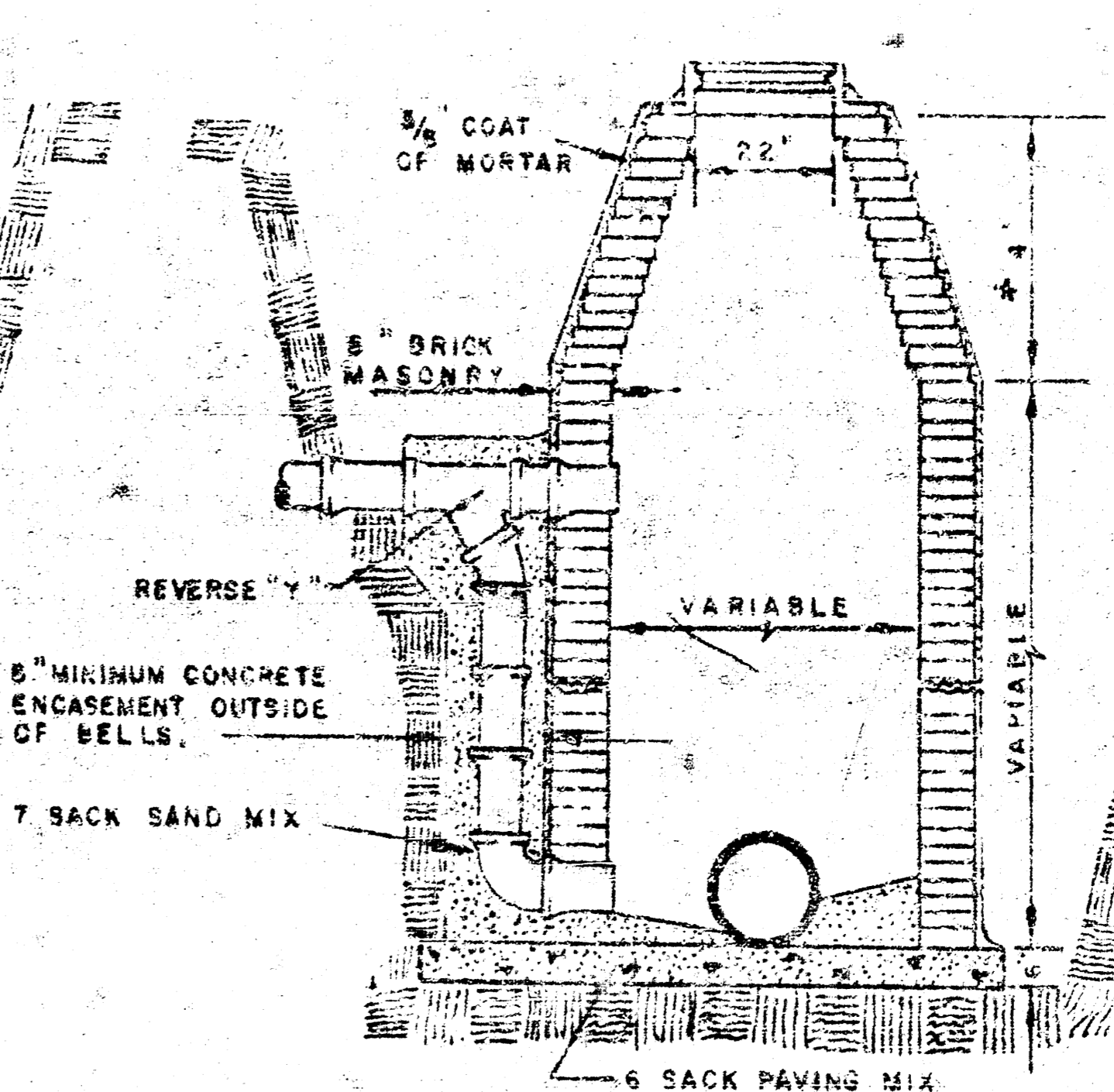
STANDARD MANHOLE  
TYPE "B"



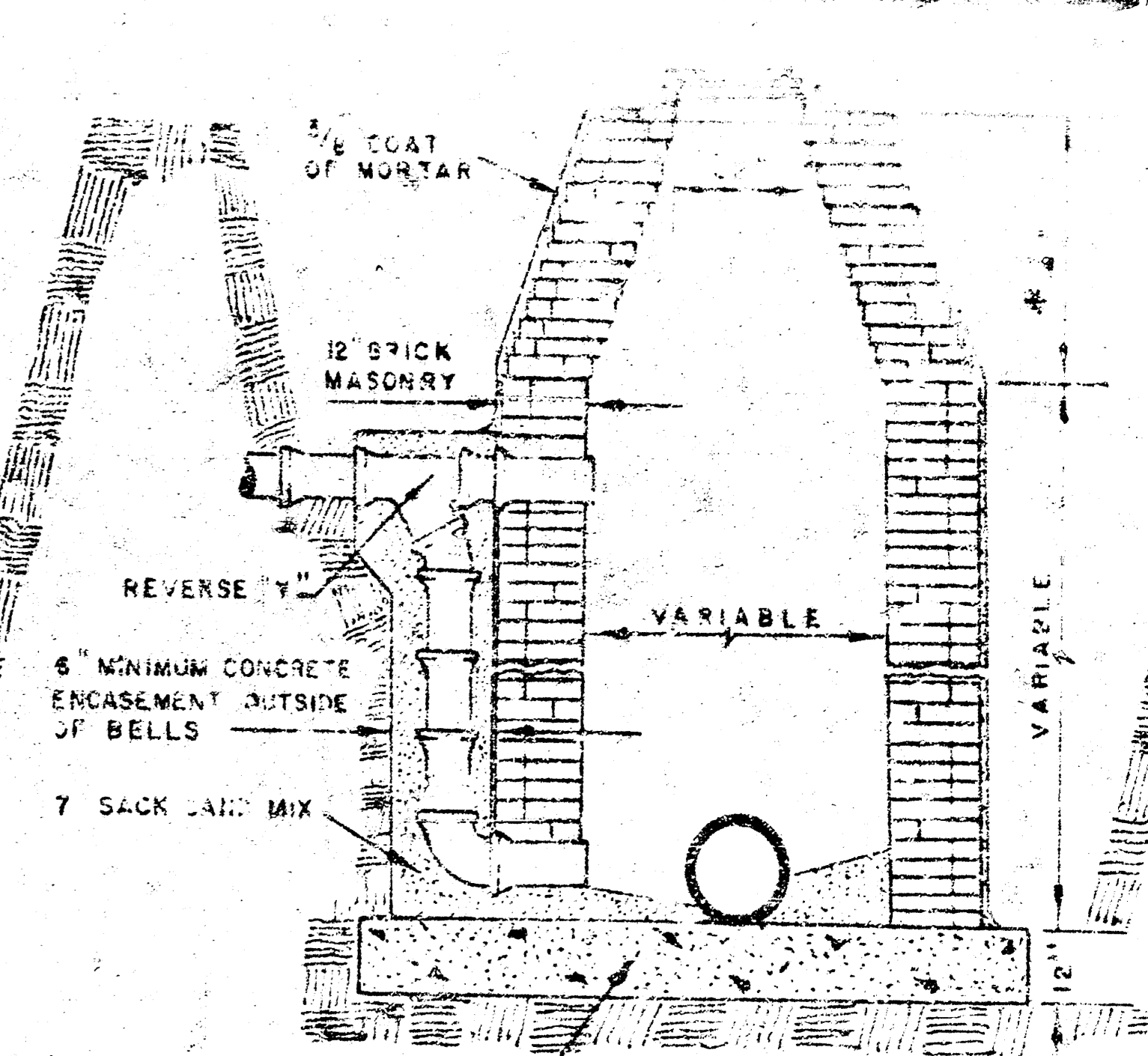
DROP MANHOLE  
TYPE "A"



DROP MANHOLE  
TYPE "B"

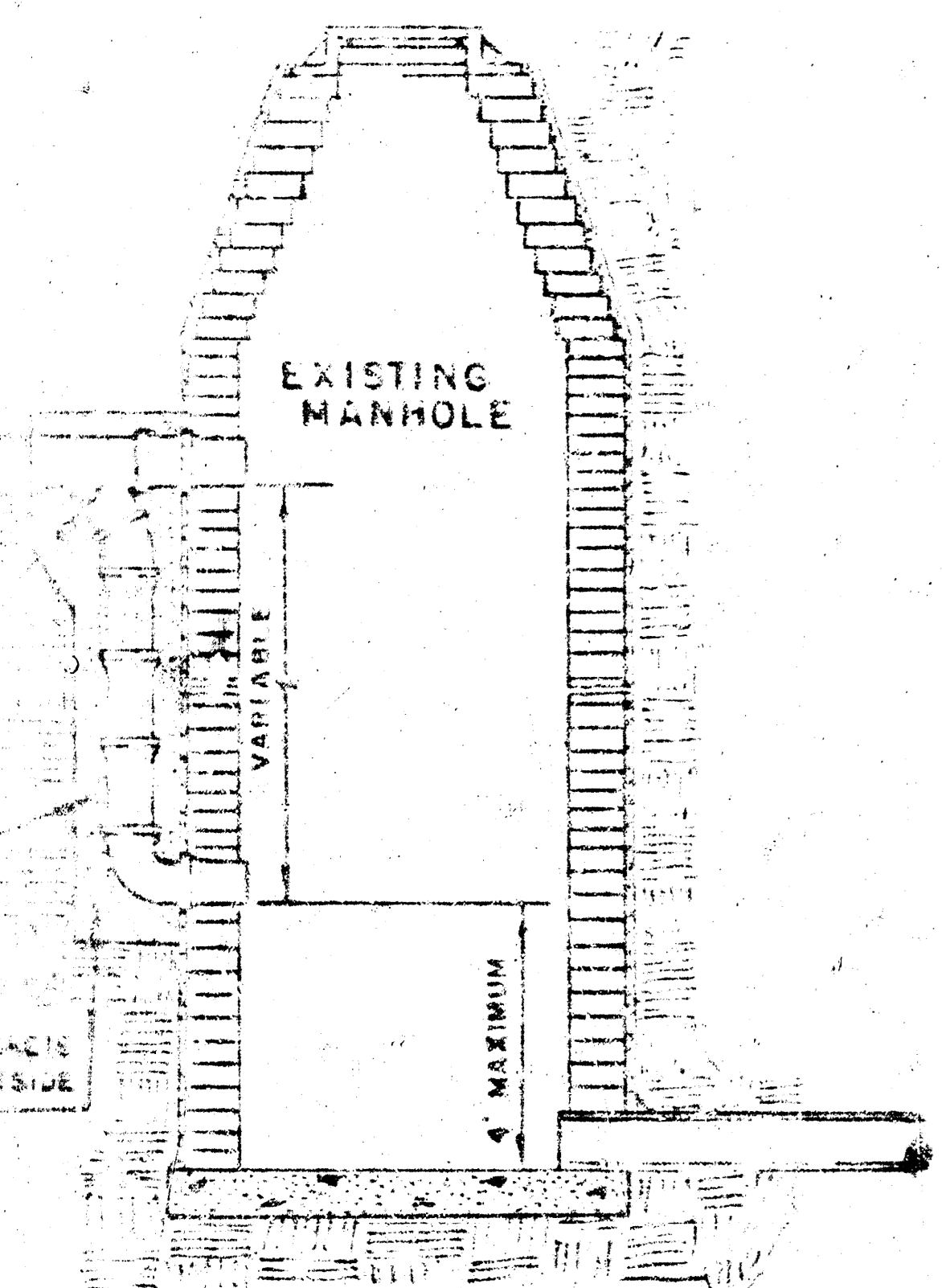


OUTSIDE DROP MANHOLE  
TYPE "A"



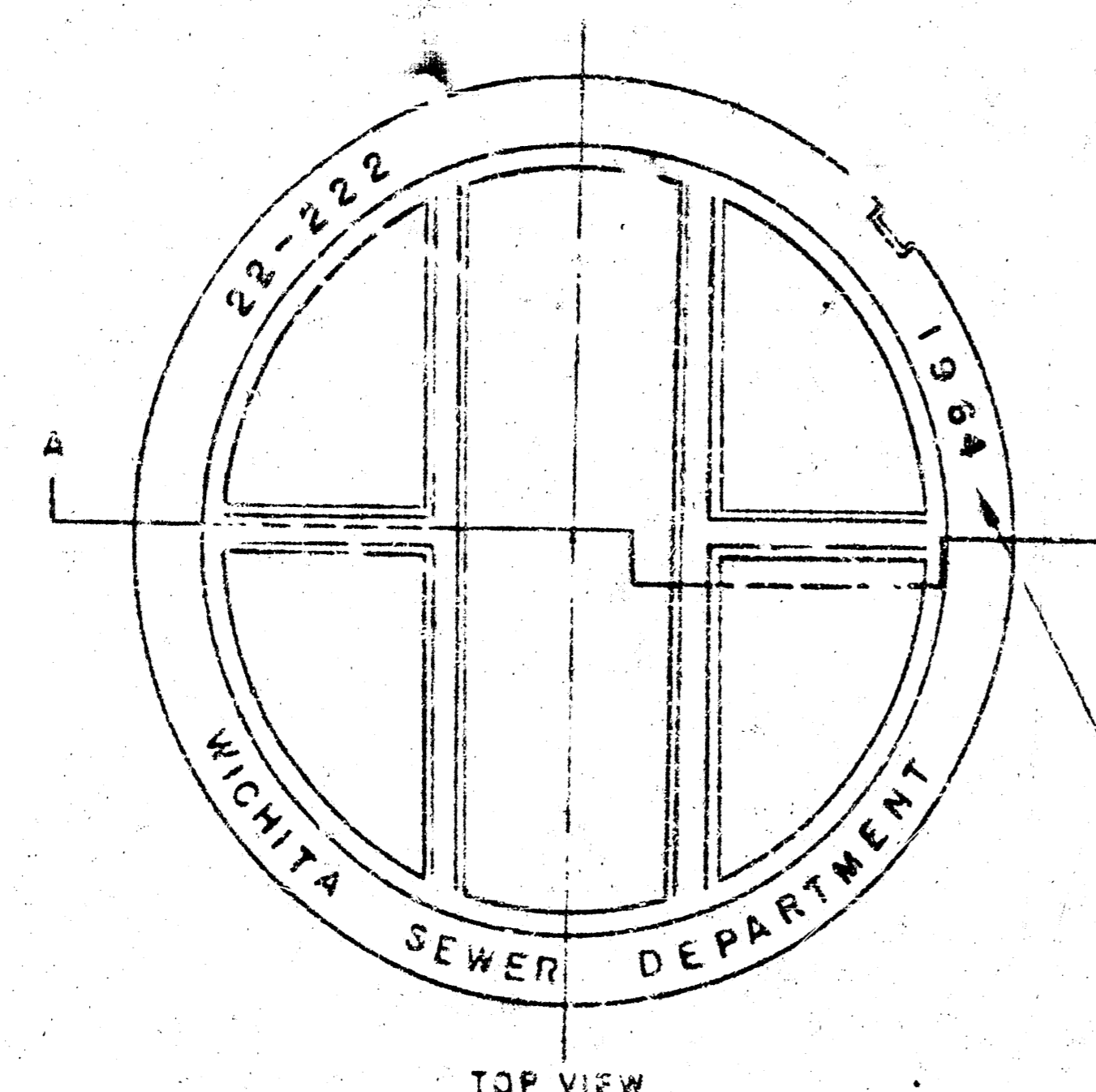
OUTSIDE DROP MANHOLE  
TYPE "B"

\* DRAW = 6' ON 5' DIA. M.H.



DETAIL OF DROP STACK

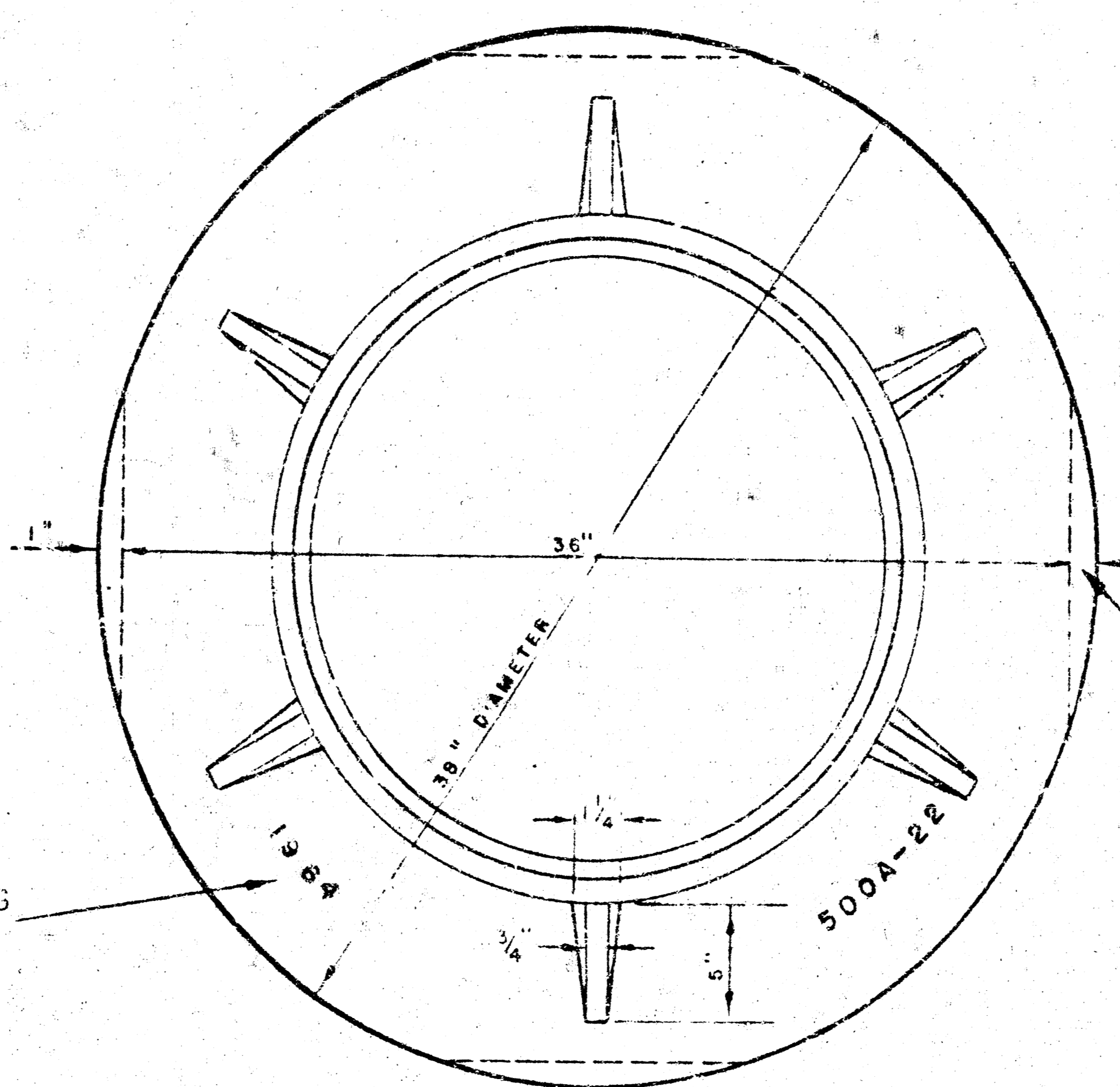
FOR EXISTING MANHOLES IN GROUND WATER



TOP VIEW  
MANHOLE COVER

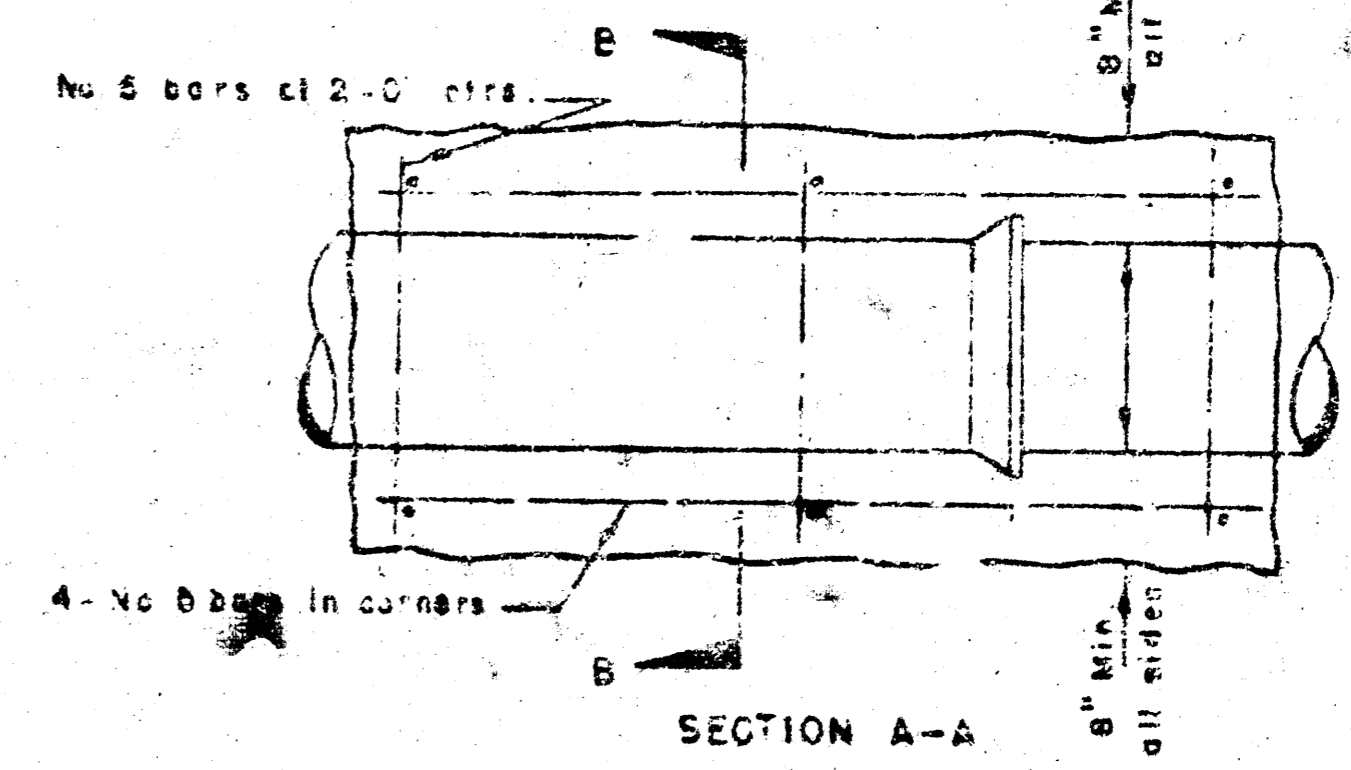
WEIGHT 110 lbs.

YEAR CASTING IS MADE

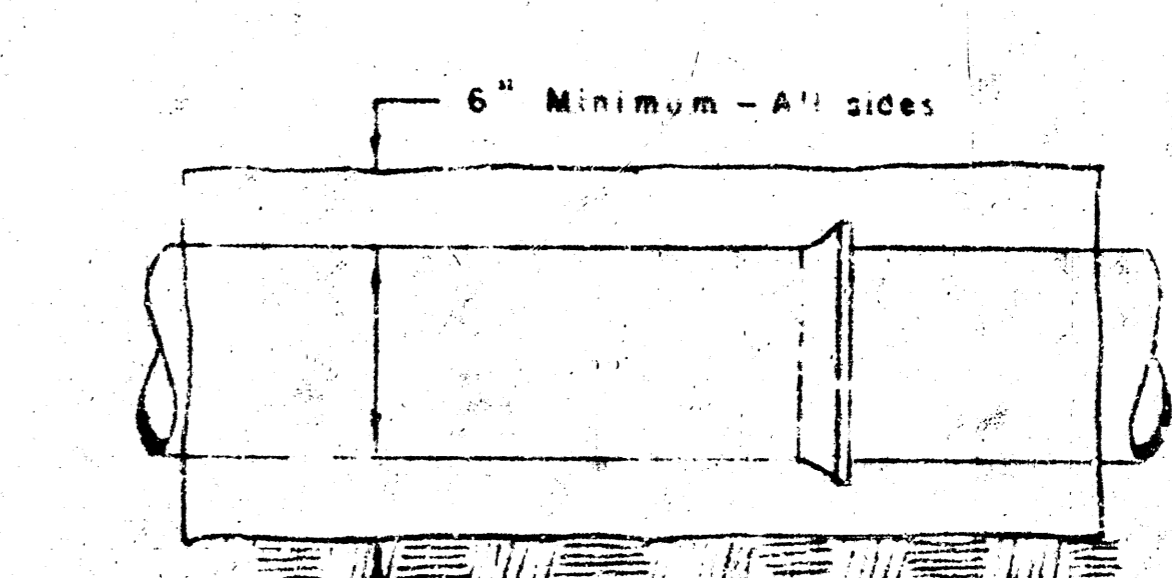
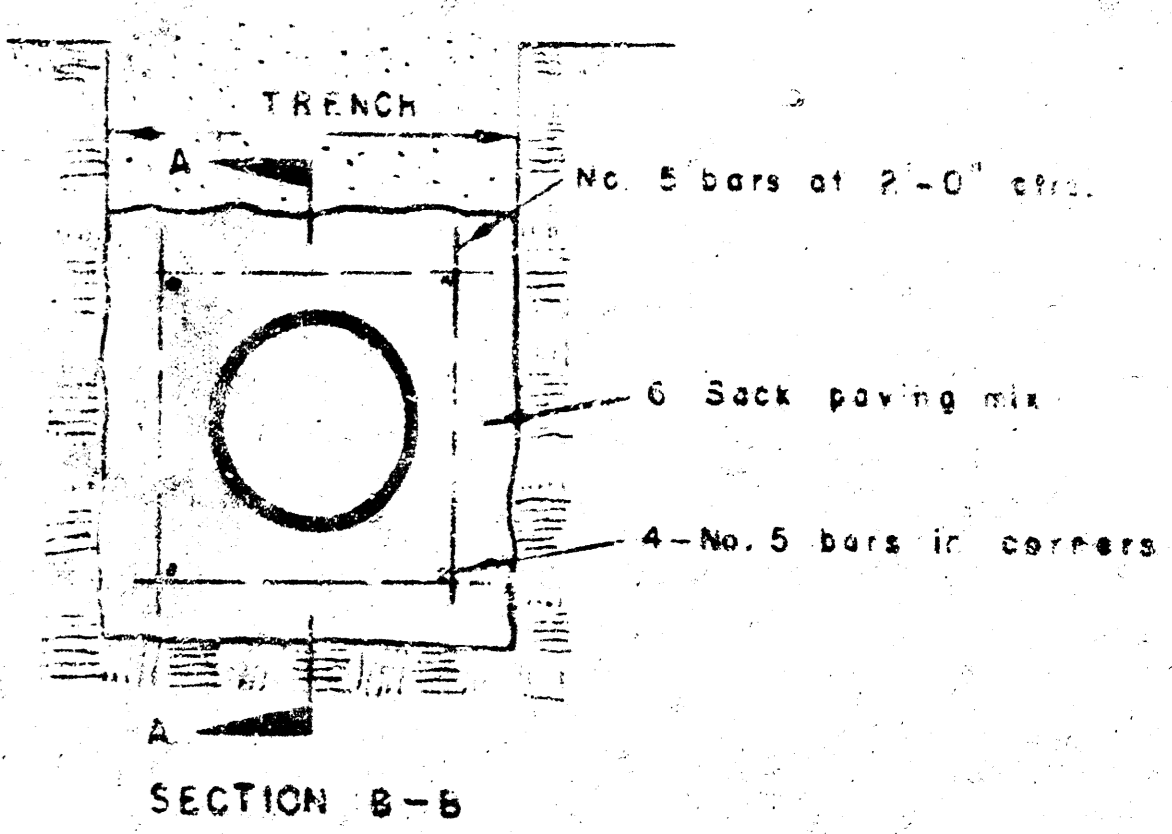


TOP VIEW  
MANHOLE RING

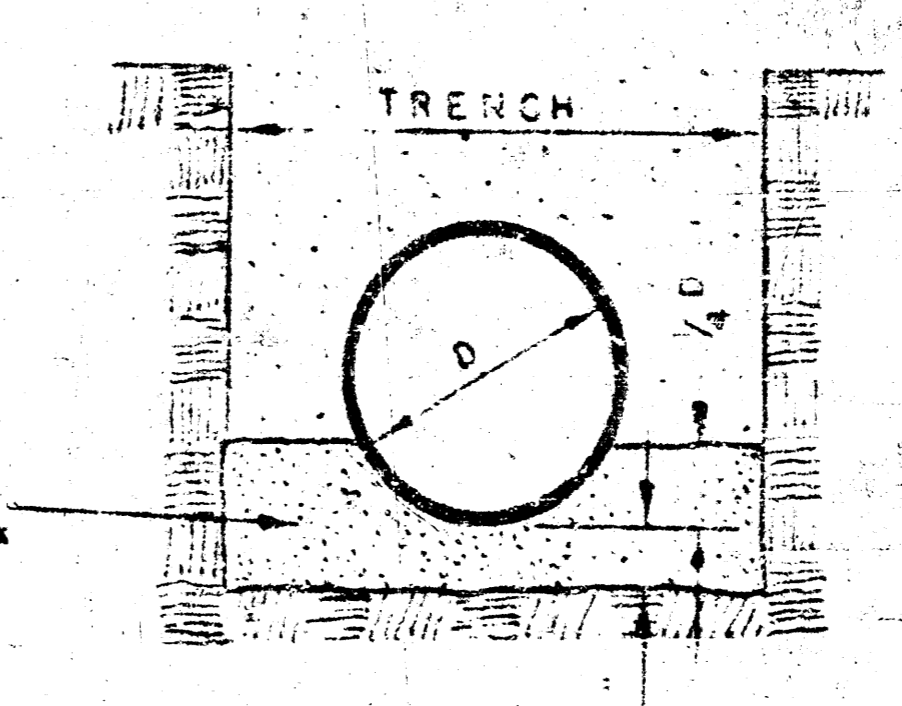
WEIGHT 355 lbs.



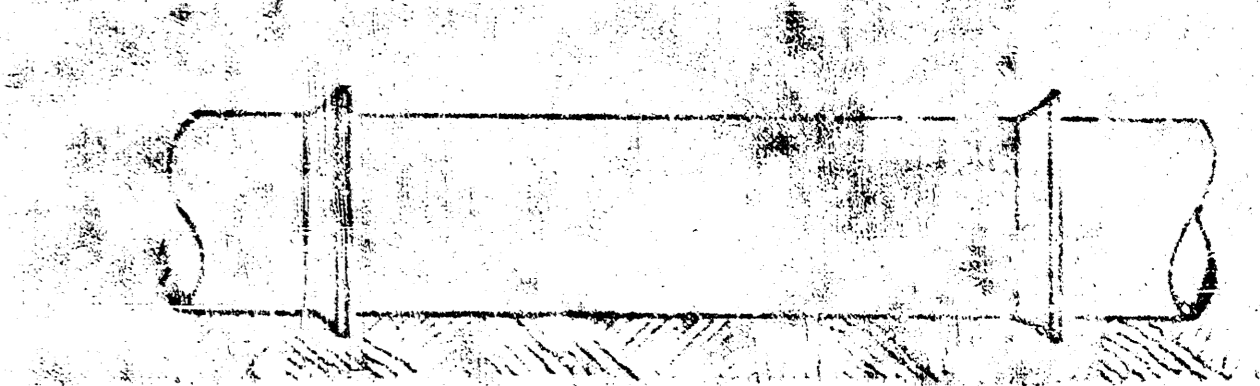
REINFORCED CONCRETE ENCASEMENT  
FOR STRENGTH



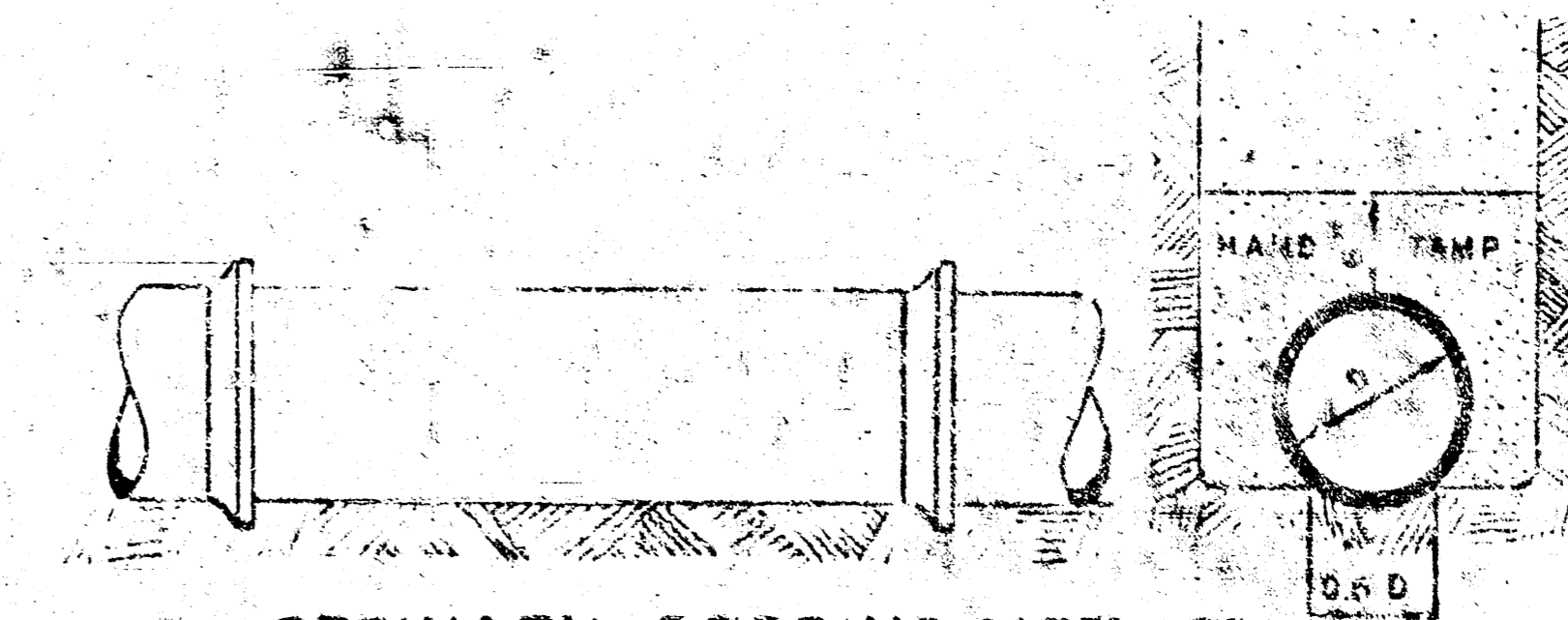
CONCRETE ENCASEMENT  
FOR COVER



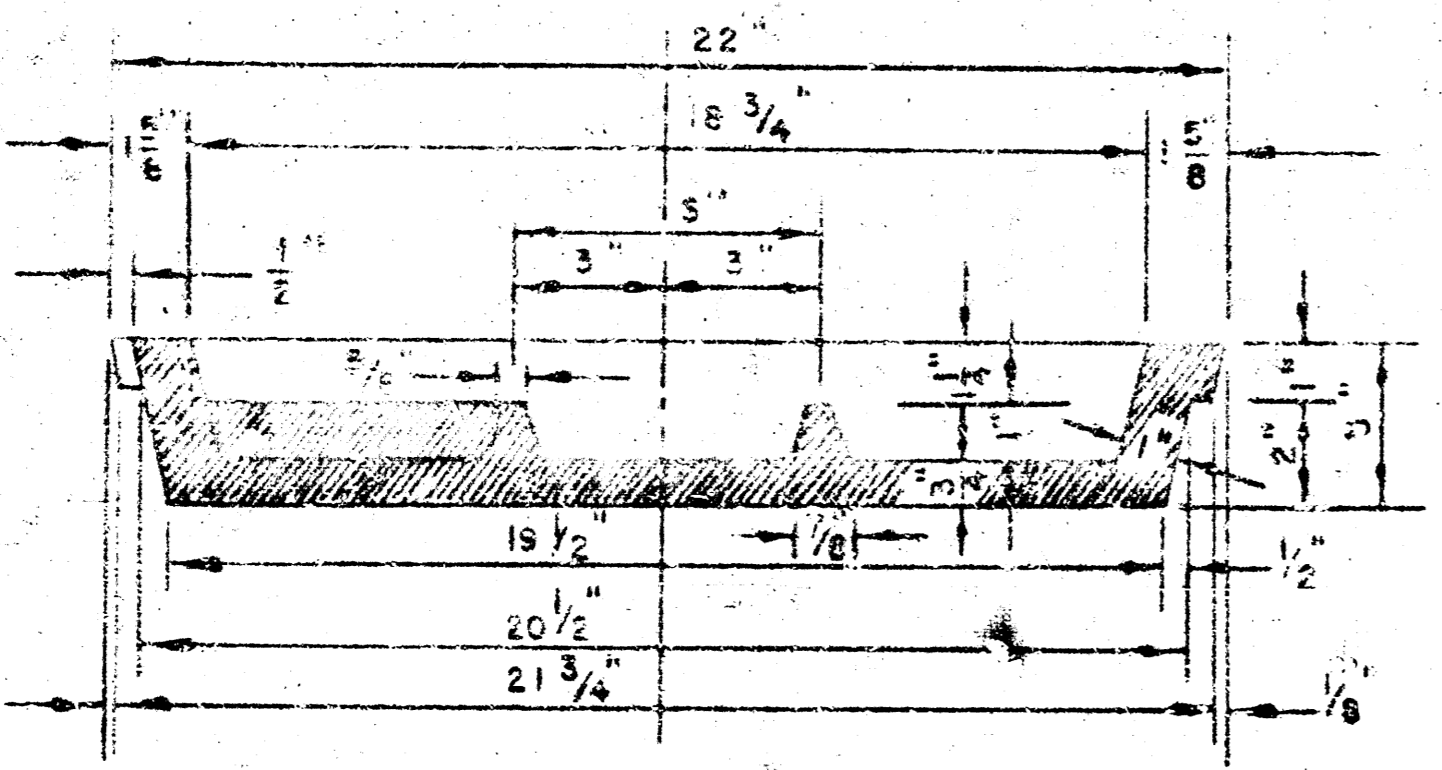
DETAIL OF CONCRETE CRADLE



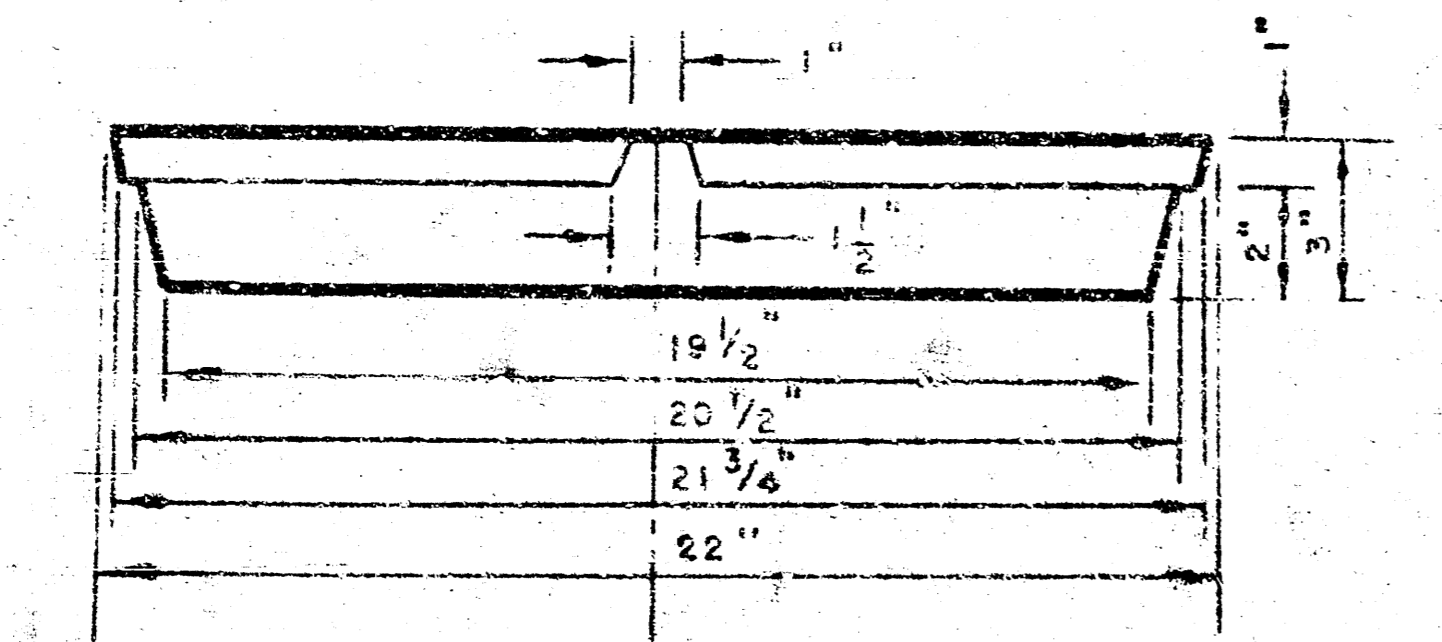
ORDINARY BEDDING METHOD  
FOR CLAY PIPE



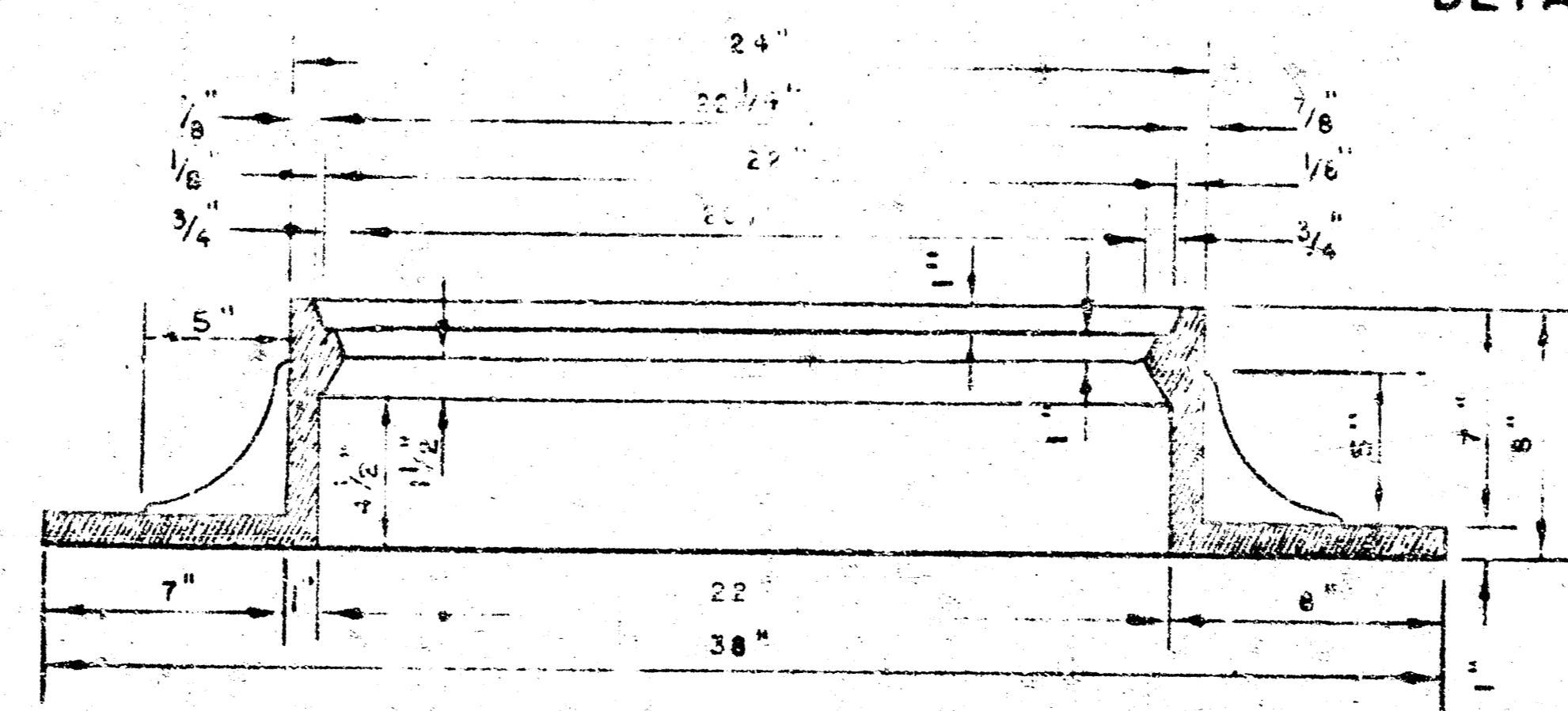
ORDINARY BEDDING METHOD  
FOR REINFORCED CONCRETE PIPE



SECTION A-A  
MANHOLE COVER



SIDE VIEW  
MANHOLE COVER



SECTION  
MANHOLE RING

OUTSIDE CIRCUMFERENCE OF COVER  
AND THE INNER FACE AND SEAT OF  
RING TO BE MACHINE FIT.

MANHOLES

THE CONCRETE USED FOR MORTAR IN MANHOLES SHALL CONTAIN 8 SACKS OF CEMENT PER CUBIC YARD.

STANDARD MANHOLES AND DROP MANHOLES, REGARDLESS OF DIAMETER, SHALL BE BID AT ONE PRICE AS STANDARD MANHOLES.

SINGLE OR DOUBLE OUTSIDE DROP MANHOLES SHALL BE BID AT ONE PRICE AS OUTSIDE DROP MANHOLES.

ALL MANHOLES WITH PIPES LARGER THAN 24" SHALL BE 5' DIAMETER UNLESS OTHERWISE SPECIFIED ON PLAN. ALL M.H.'S WITH PIPES 24" & SMALLER SHALL BE 4' DIA.

DETAILS OF  
SEWER APPURTENANCES  
ADOPTED AS STANDARD DESIGN  
BY  
ENGINEERING DIVISION  
CITY OF WICHITA, KANSAS  
R. W. LINN CITY ENGINEER  
1964

11 01