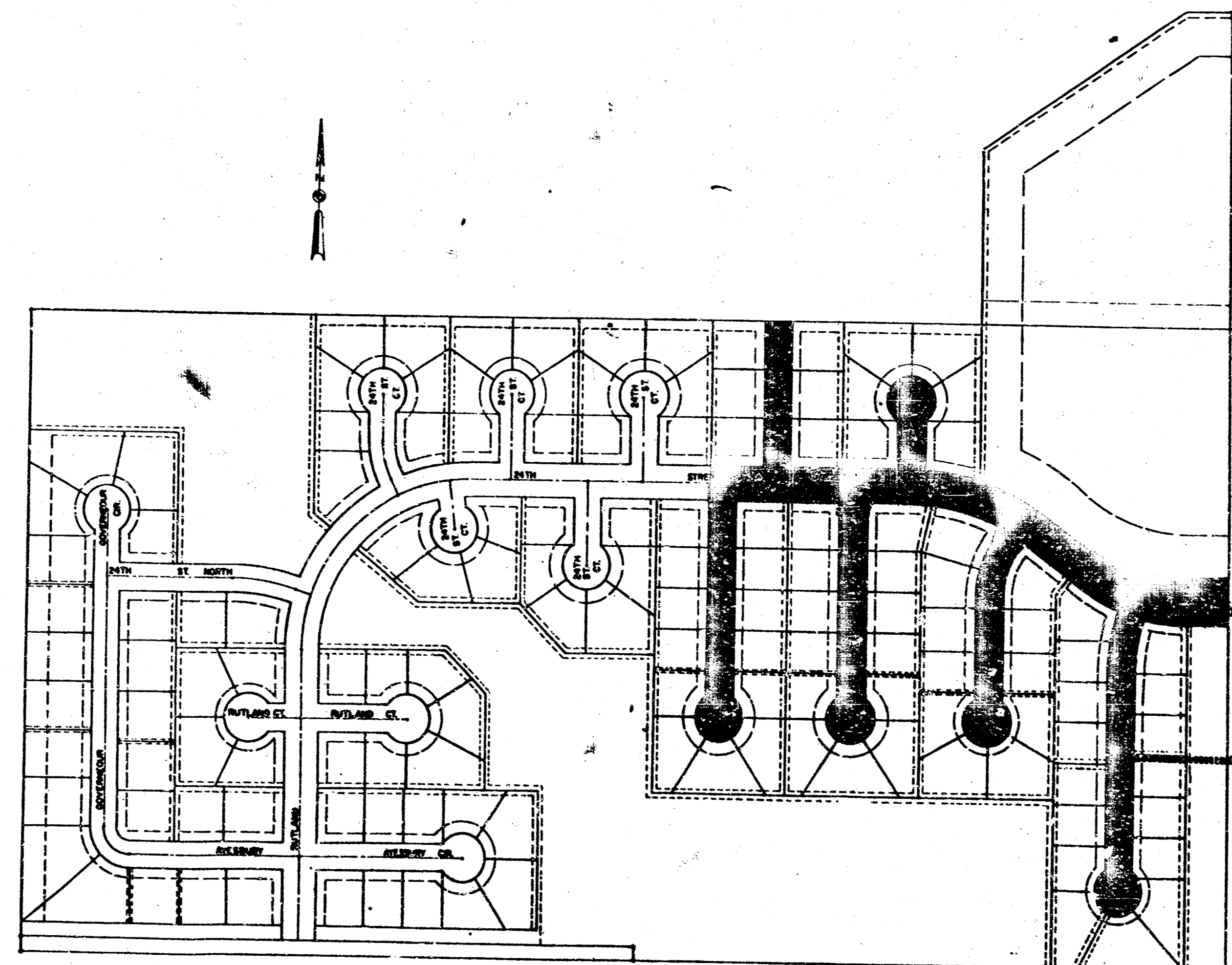
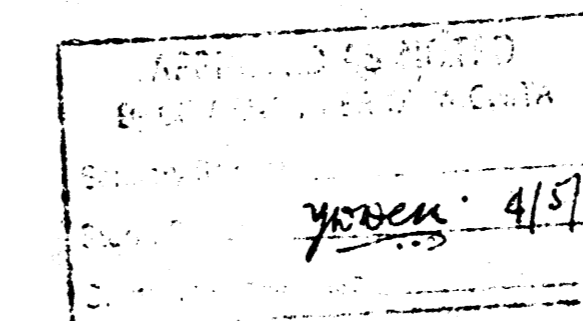


PHASE I STORM SEWERS IN SYCAMORE VILLAGE THIRD ADDITION

PROJECT NO.
468-76-245-80731-000-000-008

CITY OF WICHITA, KANSAS
R.W. LINN CITY ENGINEER

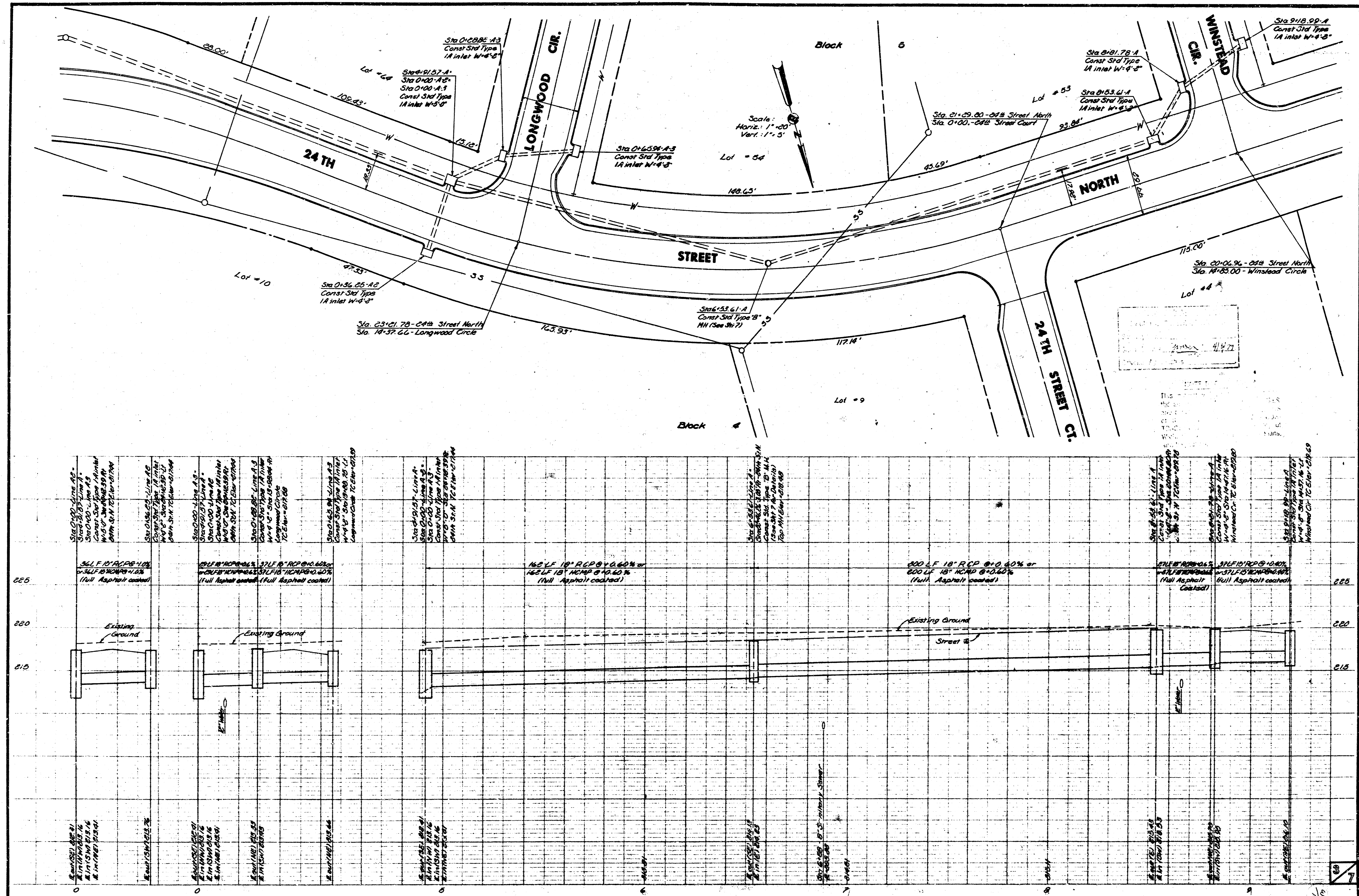


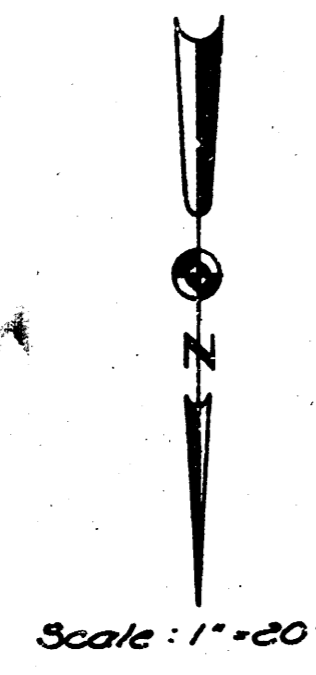
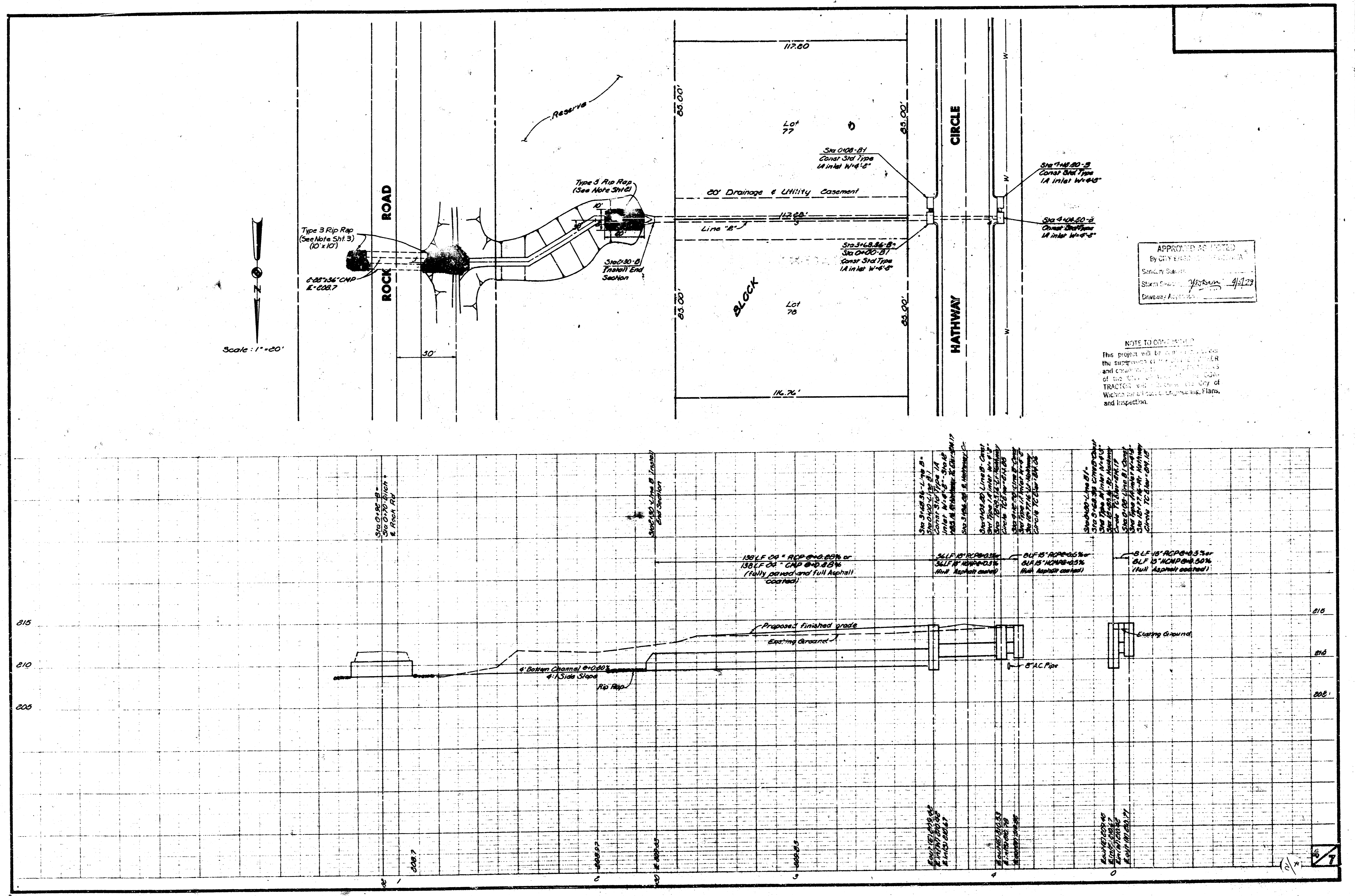
INDEX TO DRAWINGS

SHEET NO.	DESCRIPTION
1	TITLE SHEET
2	LINE A & A-1
3	LINE A, A-2 & A-3
4	LINE B
5	DITCH PROFILE & SECTIONS
6	TYPE IA CURB INLET
7	STD. TYPE B MANHOLE DETAILS



VAN DORN - HAZARD - STALLINGS
ARCHITECTS - ENGINEERS - PLANNERS





APPROVED AS NOTED
 By City Engineer
 Stanley S. [Signature]
 Storm Drainage
 Division

NOTE TO CONTRACTOR
 This project will be subject to the
 the supervision of the City Engineer
 and compliance with the provisions
 of the City Ordinance. The Contractor
 shall be responsible for the City of
 Wichita and its public works, Plans,
 and Inspection.

Manhole 1A
 Manhole 1B
 Manhole 1C
 Manhole 1D
 Manhole 1E
 Manhole 1F
 Manhole 1G
 Manhole 1H
 Manhole 1I
 Manhole 1J
 Manhole 1K
 Manhole 1L
 Manhole 1M
 Manhole 1N
 Manhole 1O
 Manhole 1P
 Manhole 1Q
 Manhole 1R
 Manhole 1S
 Manhole 1T
 Manhole 1U
 Manhole 1V
 Manhole 1W
 Manhole 1X
 Manhole 1Y
 Manhole 1Z

180 LF 24" RCP @ 0.50% or
 135 LF 24" CIP @ 0.50%
 (Full depth and full asphalt
 covered)

5 LF 18" RCP @ 0.50%
 5 LF 18" RCP @ 0.50%
 (Full depth covered)

5 LF 18" RCP @ 0.50%
 5 LF 18" RCP @ 0.50%
 (Full depth covered)

5 LF 18" RCP @ 0.50%
 5 LF 18" RCP @ 0.50%
 (Full depth covered)

4' Bottom Channel @ 0.00'
 @ 1% Side Slope

8" AC Pipe

Existing Ground

Proposed finished grade

Existing Ground

215
210
205

210
205

0+00.00

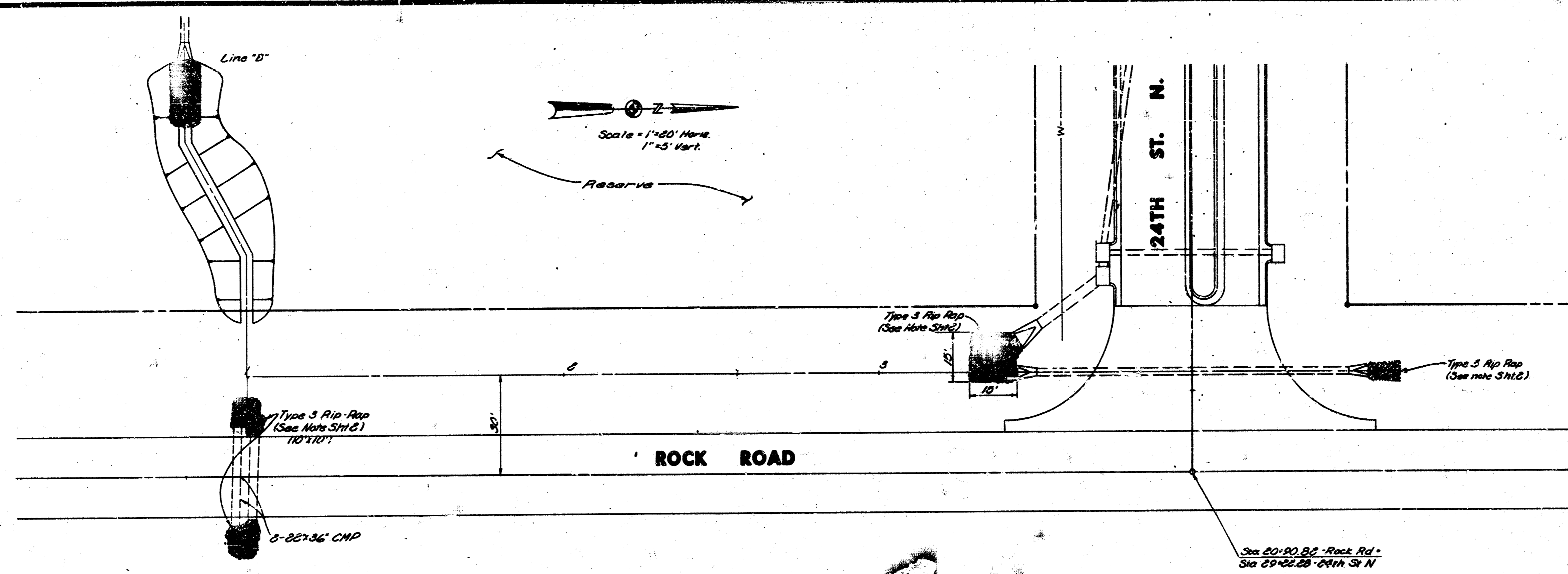
0+100.00

0+200.00

0+300.00

0+400.00

0+500.00



DATE: 4/17/79

NOTE TO CONTRACTOR
This project will include the
the street and rip rap
and rip rap
of
the City of
the City of

