

**KANSAS TURNPIKE AUTHORITY
PROPERTY - PERMIT REQUIRED
TO DO WORK SHOWN**

NOTE: CONTRACTOR TO FILL AND GRADE AREA TO DRAIN ON TURNPIKE RIGHT-OF-WAY LEFT OF STA. 22443 ON CHANNEL B. FILL TO BE COMPACTED TO A POINT 6" ABOVE THE TOP OF STD. DENSITY AND SHALL BE CONSIDERED AS SUBSIDIARY TO THE OTHER ITEMS OF WORK. TOP OF LEFT SHOULDER OF TURNPIKE FENCE FROM STA. 25-50 TO STA. 25486. CONTRACTOR WILL BE REQUIRED TO FILE A DEPOSIT WITH THE TURNPIKE AUTHORITY BEFORE STARTING CONSTRUCTION. DEPOSIT WILL BE REFUNDED UPON SATISFACTORY COMPLETION OF THE WORK. ALL DISTURBED AREAS OF TURNPIKE RIGHT-OF-WAY SHALL BE FERTILIZED, SEEDED, AND MULCHED.

NOTES

1. Section letter or Detail No. Sheet on which Section or Detail is shown
2. All contours shown are exist ground in 1978
3. For Profiles See Sheet 3
4. For Storm Drain Plans & Profiles See Sheet 4
5. For Massing & Manhole Details See Sheet 5
6. For Design Approval See letter dated 9-18-74 from M.S. Mitchell to Professional Engineering Consultants, P.A.

HORIZONTAL CONTROL

POINT NO.	NORTH	EAST
①	100.00	200.00
②	100.00	643.65
③	175.0334341	558.8162309
④	216.1368586	272.7741873
⑤	559.7441281	247.806683
⑥	681.1331939	332.330656
⑦	634.4174423	352.7146171
⑧	750.6504338	561.5113263
⑨	713.6809449	966.3584414
⑩	484.9638428	1094.3954577
⑪	508.3556054	1779.8316257
⑫	612.4296305	290.5835053
⑬	640.5479710	383.2190915

SCALE 1"=40'
Contour Interval=1'
Date of Topo 10-73

Fill area to Elev. 132.0±
Cross-Sections Required

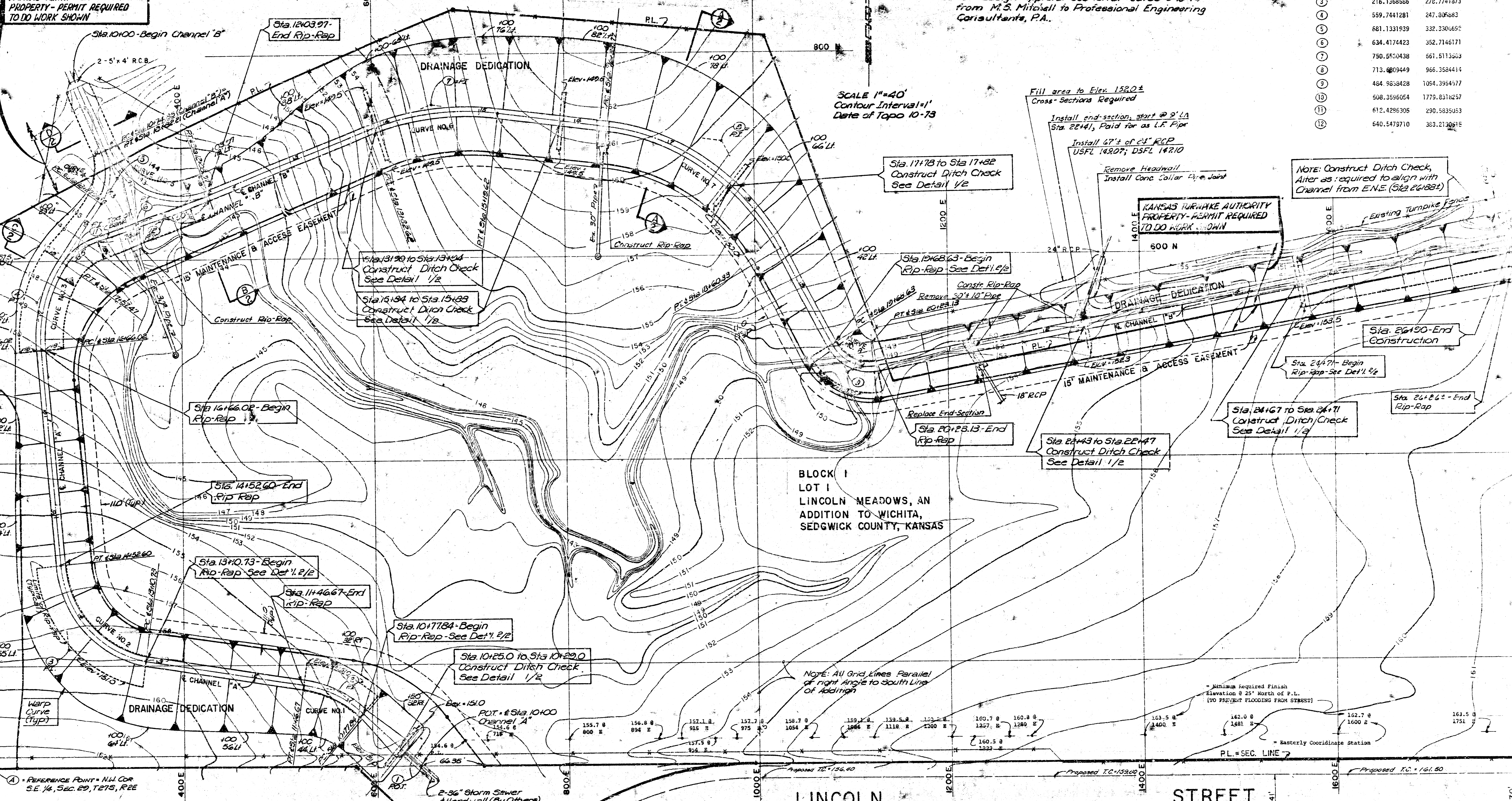
Install end-section start @ 2' L.A.
Sta. 22441, Paid for as L.F. Pipe

Install 47' of 24" RCP
USFL 14207; DSFL 14210

Remove Headwall
Install Conc. Collar Pipe Joint

Note: Construct Ditch Check,
Alter as required to align with
Channel from E.N.E. (Sta. 24488)

**KANSAS TURNPIKE AUTHORITY
PROPERTY - PERMIT REQUIRED
TO DO WORK SHOWN**



BLOCK I
LOT I
LINCOLN MEADOWS, AN
ADDITION TO WICHITA,
SEDGWICK COUNTY, KANSAS

NOTE: All Grid Lines Parallel
of right Angle to South Line
of Addition

Minimum Required Finish
Elevation @ 25' North of P.L.
(TO PREVENT FLOODING FROM STREET)

Easterly Coordinate Station

VERTICAL CONTROL

NOTE: Elevations Shown are City of Wichita Datum
B.M. #1 - Chis. "d" S.E. Cor of South Headwall of
2-5'x4' R.C.B. under K.T.A. Elev. = 145.90

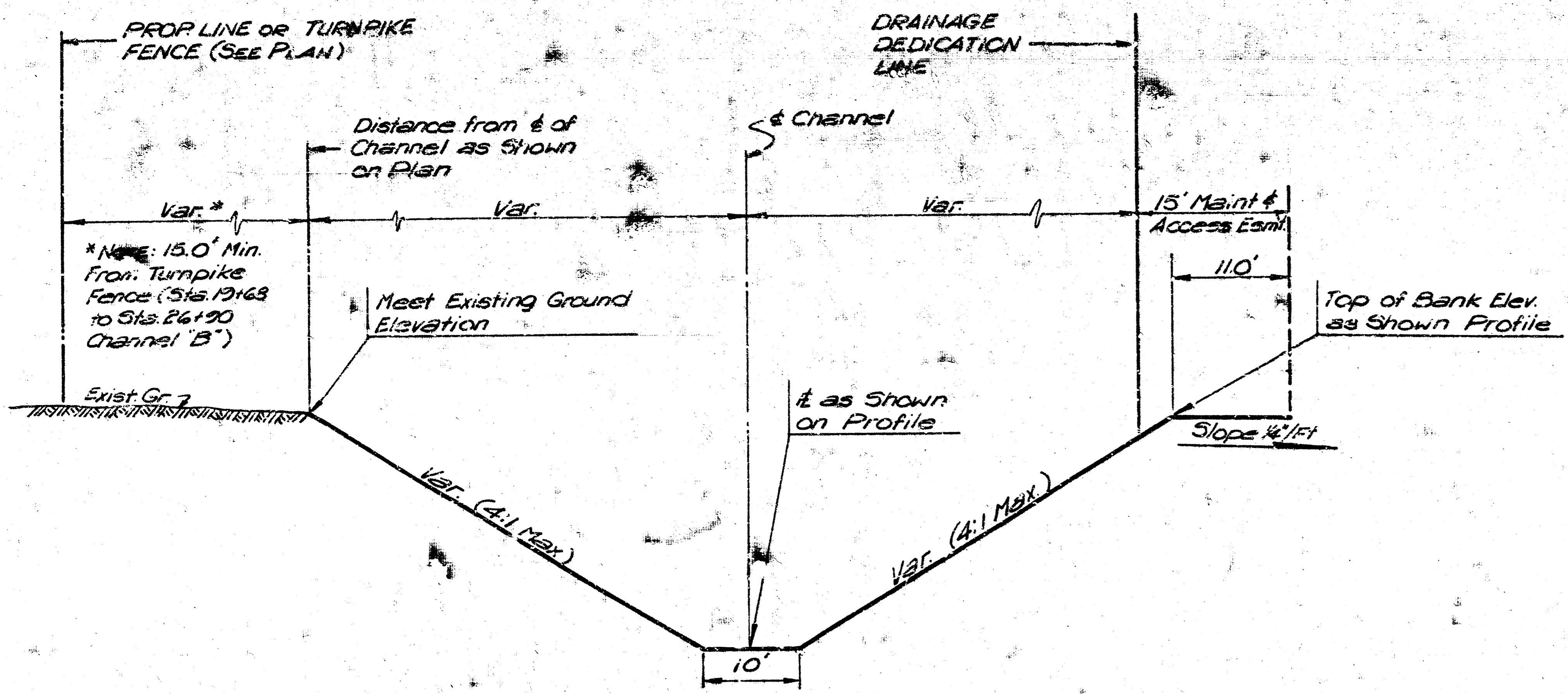
B.M. #2 - Metal Fc. Post @ Coordinate
Sta. 100E & 111.7N Elev. = 158.11

B.M. #3 - RR Spike in Hedge tree @ Coordinate
Sta. 1875 E & 39N Elev. = 162.18

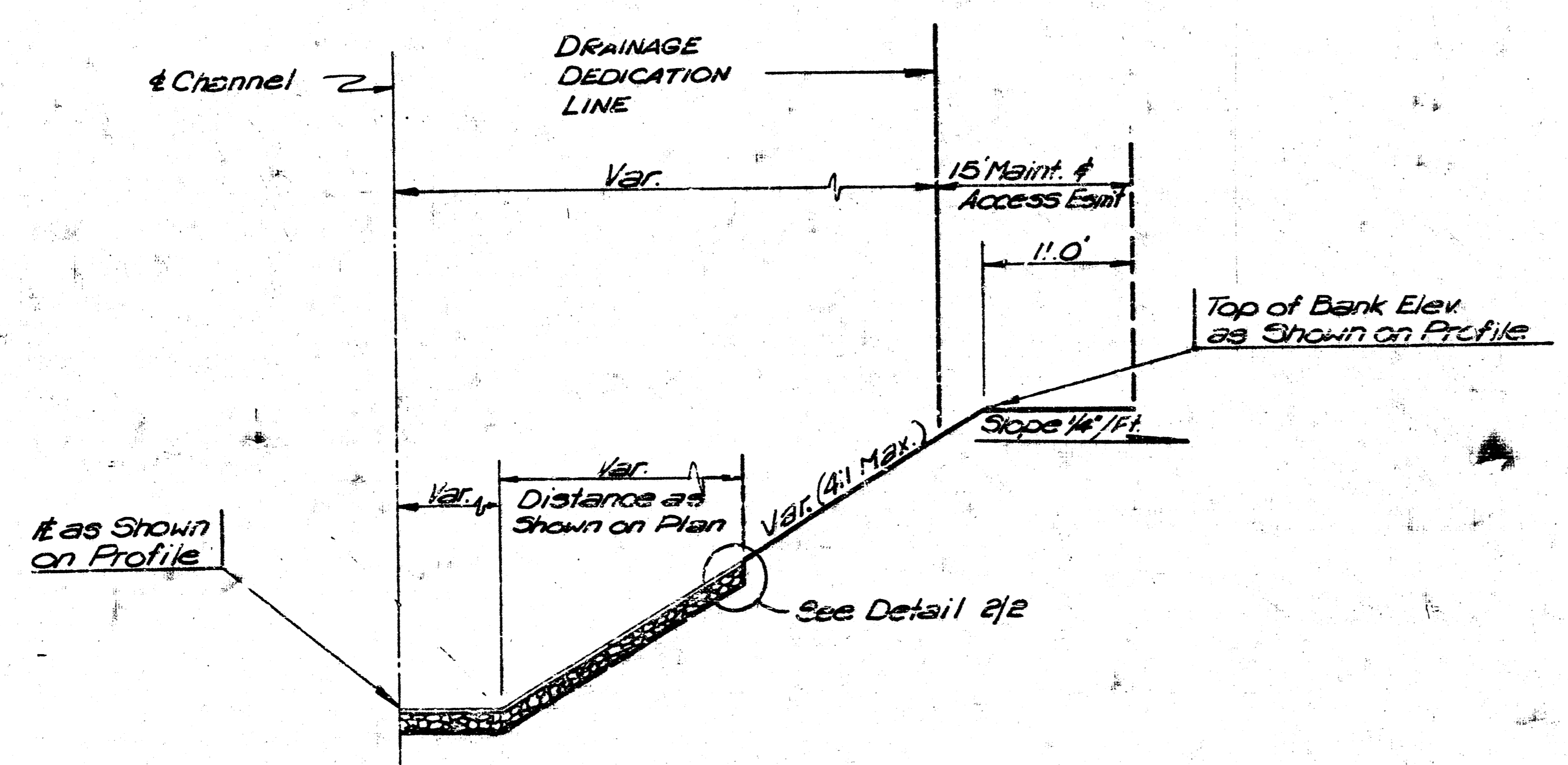
CURVE	DATA
CURVE No. 1 P.I. = Sta. 11+13.25 R = 100' L = 63'	
CURVE No. 2 P.I. = Sta. 17+13.70 Δ = 40°00'00" R = 131.00' L = 214.6'	
CURVE No. 5 P.I. = Sta. 11+55.56 Δ = 81°02'14" R = 85.00' L = 129.12'	
CURVE No. 7 P.I. = Sta. 17+56.20 Δ = 53°51'47" R = 84.00' L = 226.56'	

NOTE: BECAUSE OF GROUND CHANGE SINCE ORIGINAL CROSS-SECTIONS, THE ENGINEER SHALL TAKE NEW CROSS-SECTIONS BEFORE AND AFTER CONSTRUCTION OF THIS PROJECT.

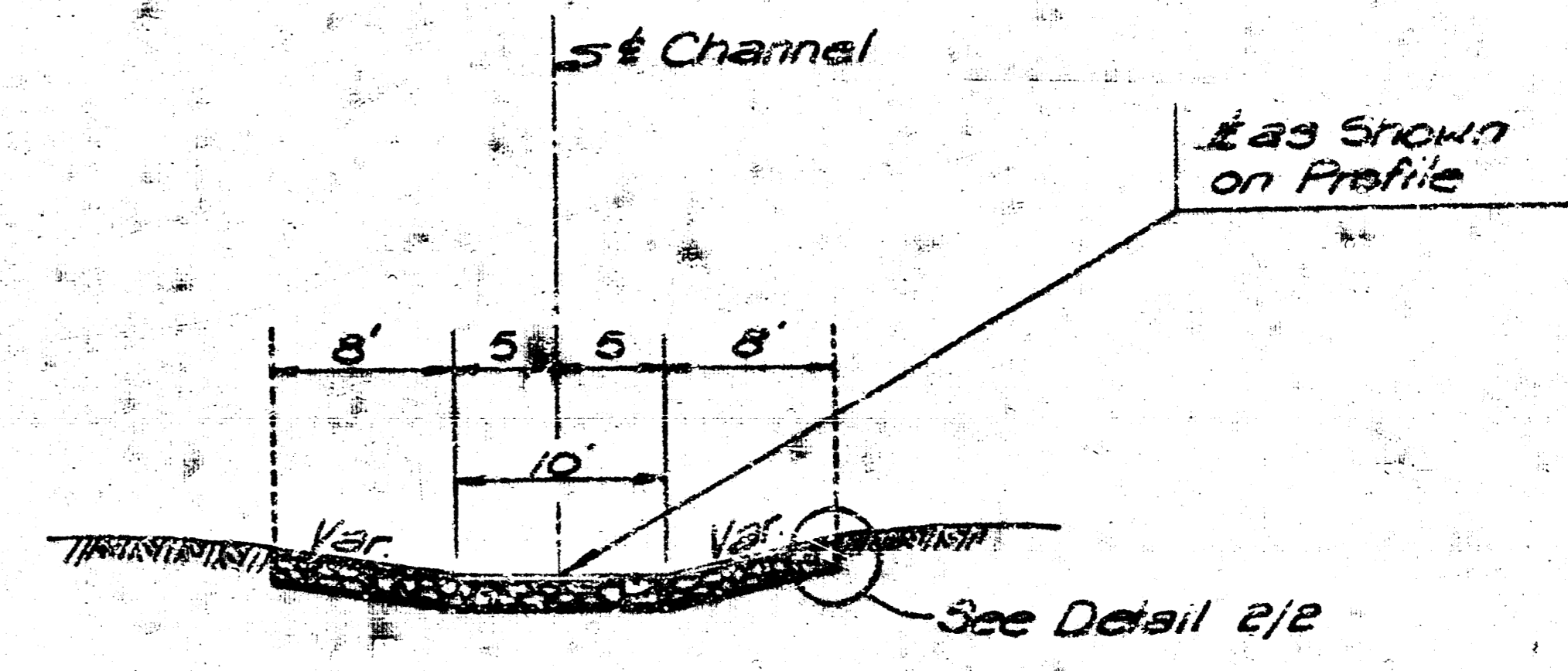
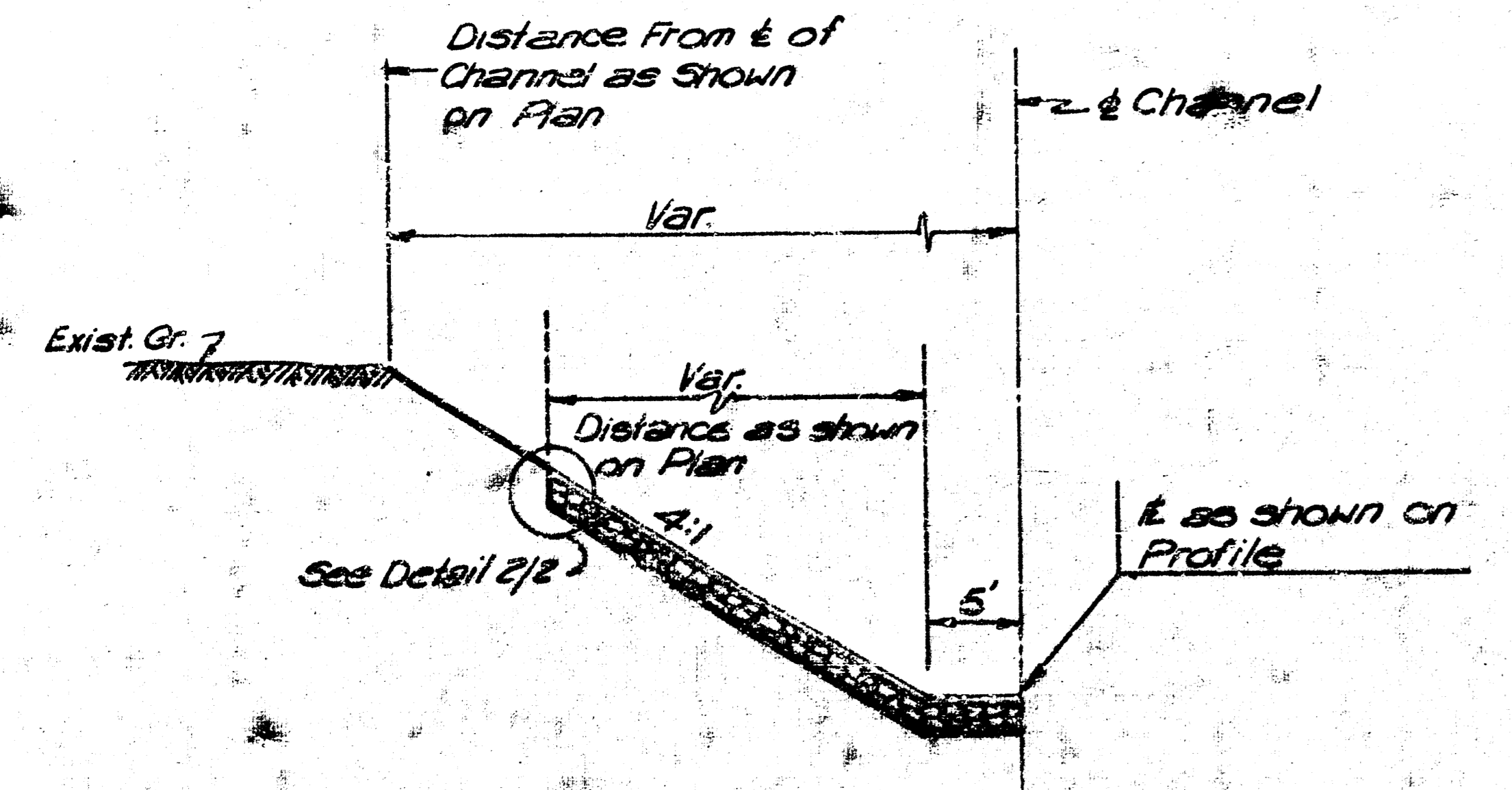
2	Revised for SWD #21	
1	Changed S.D.-B f Added Note #6	



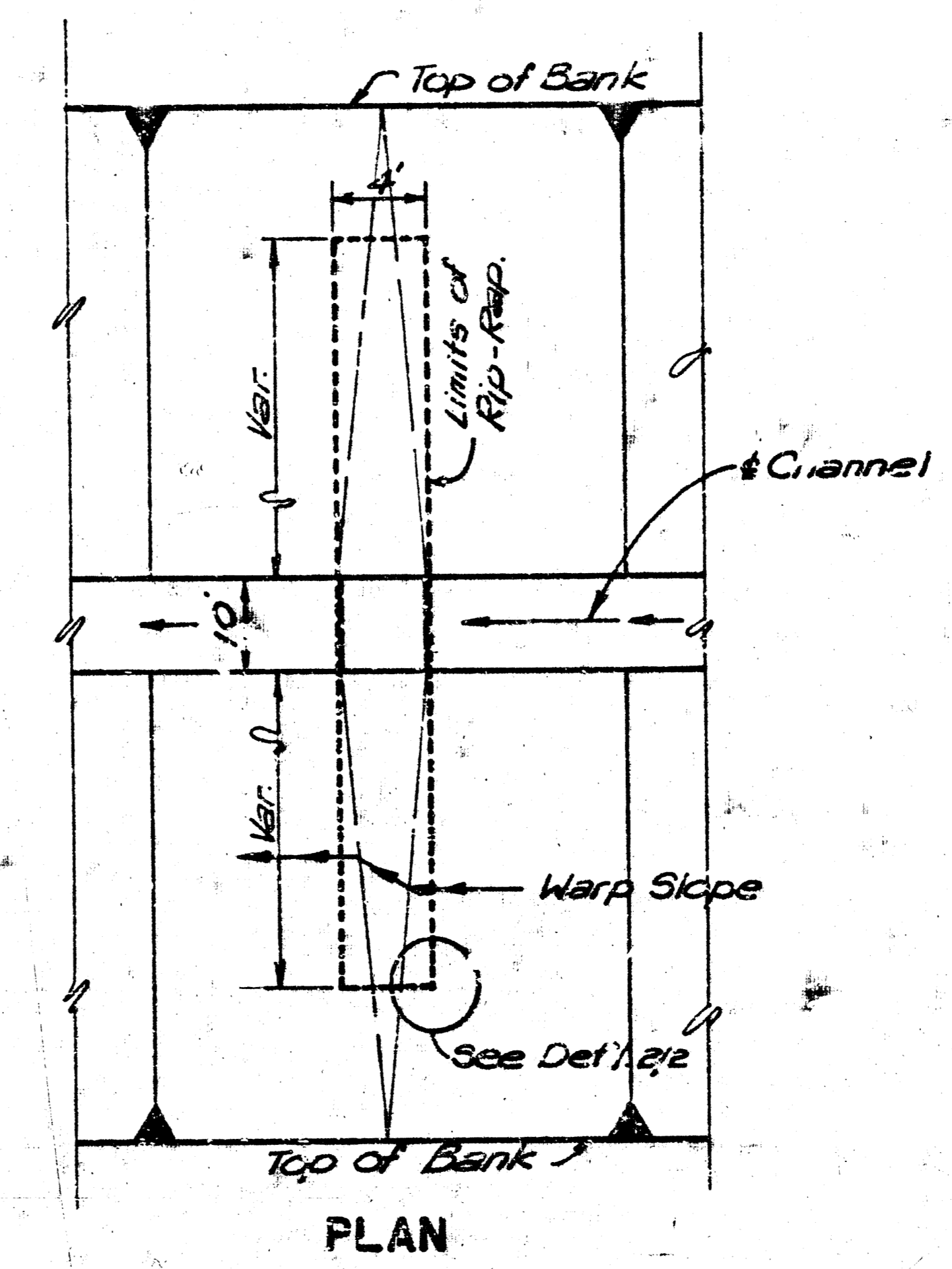
A
2
TYPICAL CHANNEL SECTION
(CHANNEL "A" & CHANNEL "B")



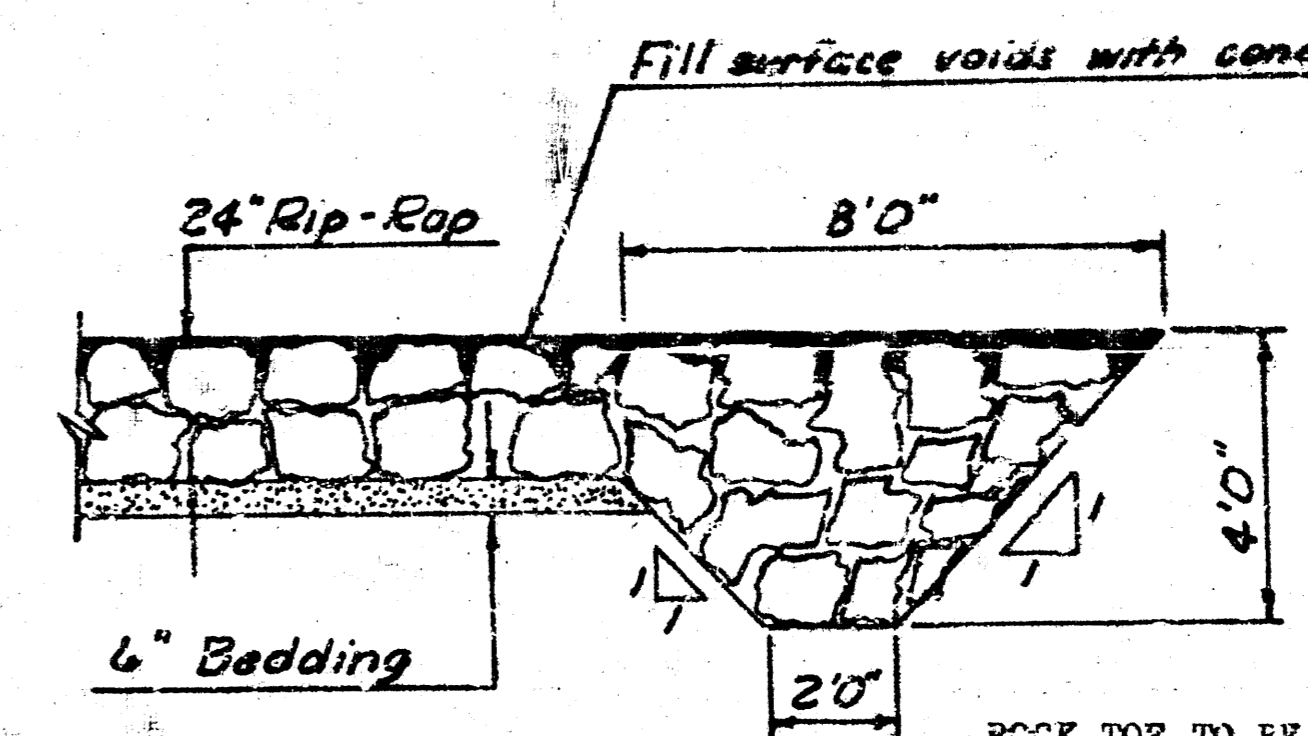
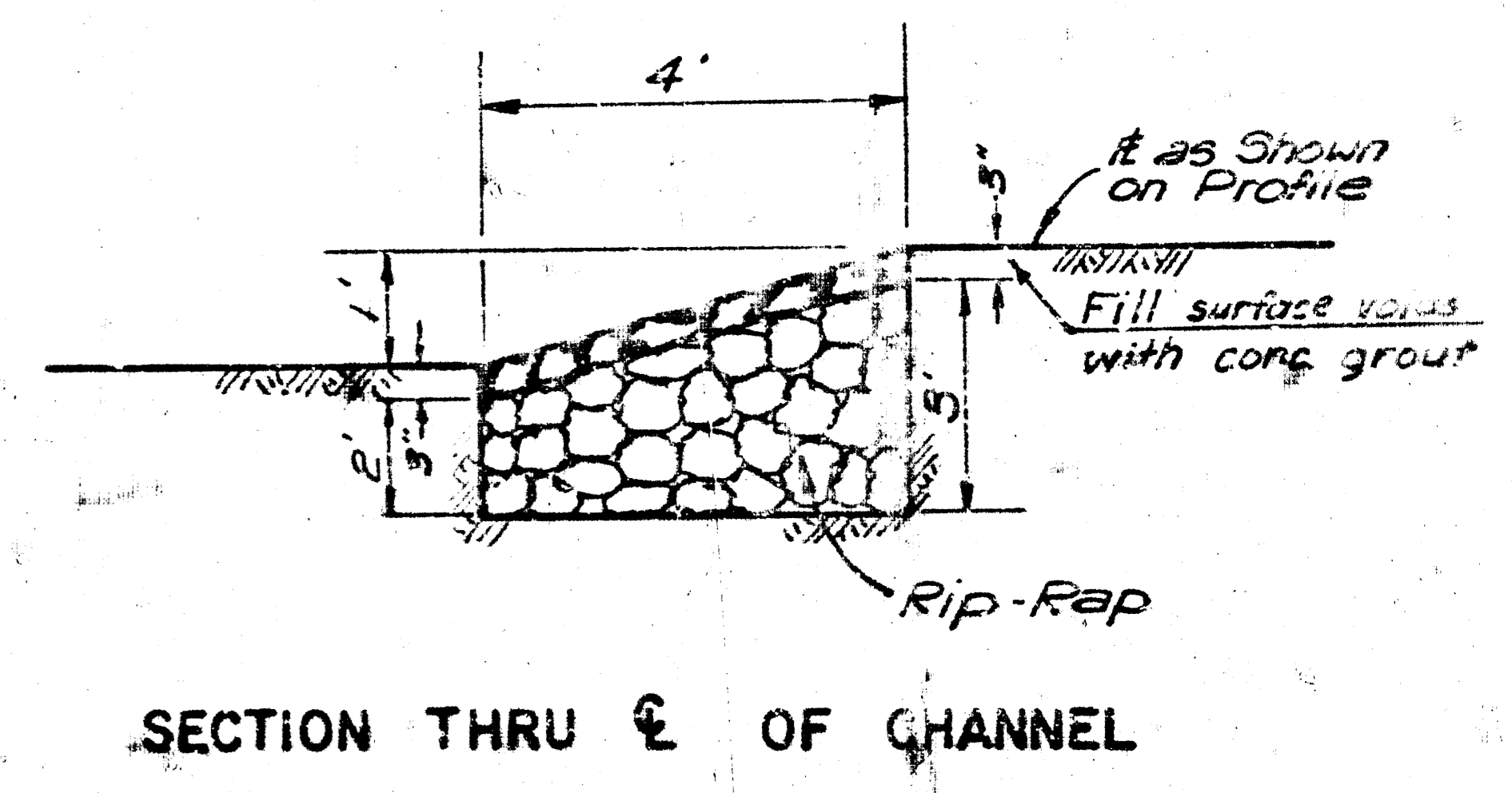
B
2
TYPICAL CHANNEL SECTION
Sta. 16+66.02 (Channel "A") to Sta. 12+03.97 (Channel "B")



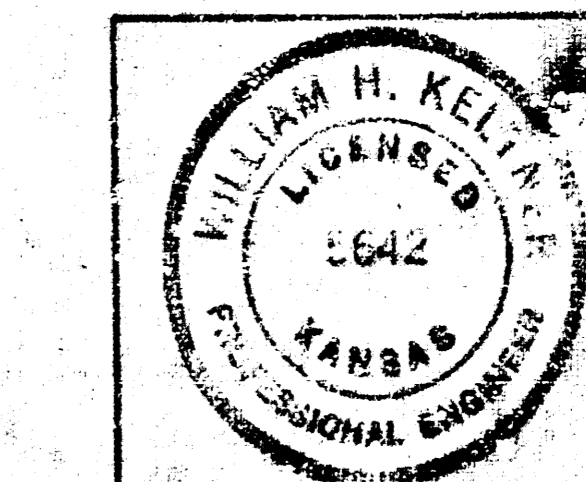
D
2
TYPICAL CHANNEL SECTION
Sta. 10+00 to Sta. 10+14.85 (Channel "B")



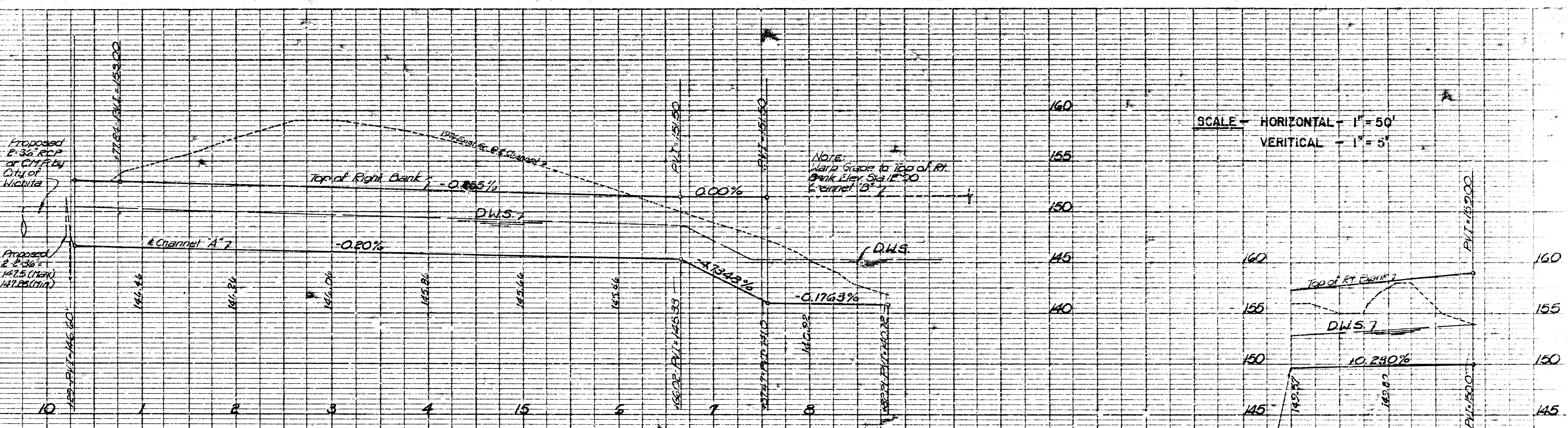
1
2
DITCH CHECK DETAILS



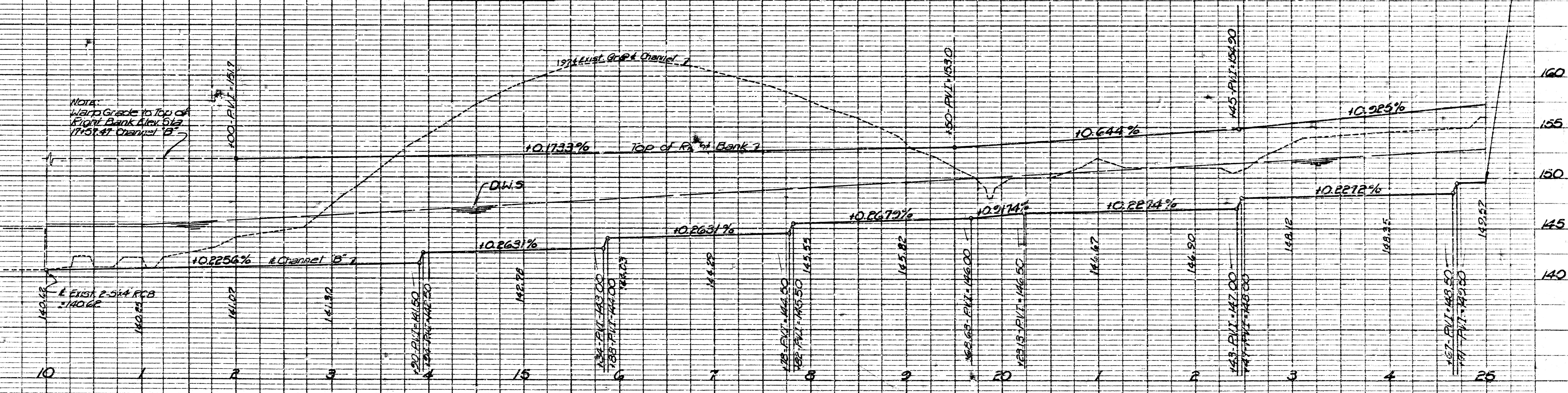
2
2
RIP RAP DETAILS



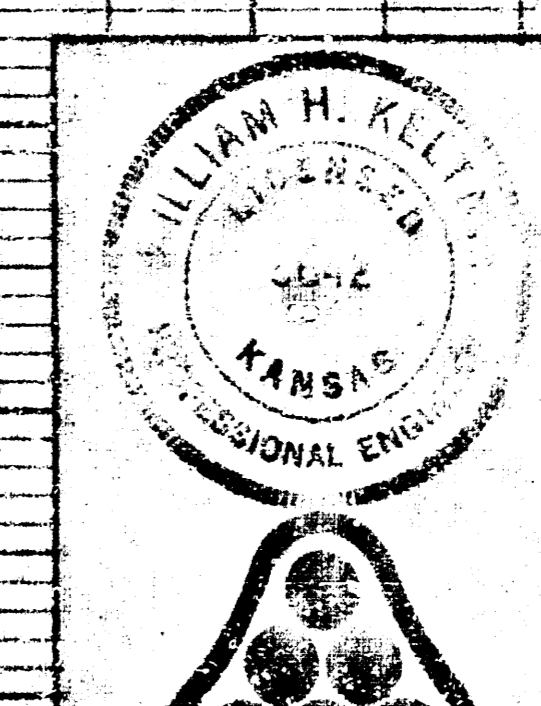
1 Revised for SWD#21		WK 4-24-	
No.	Revision	By	Draw
LINCOLN MEADOWS CHANNEL IMPROVEMENTS (SECTIONS & DETAILS)			



CHANNEL "A"



CHANNEL "B"



Revised DWS		RD	10/9/74
No.	Revision	By	Date
LINCOLN MEADOWS			
CHANNEL IMPROVEMENTS (PROFILES)			
PROFESSIONAL ENGINEERING CONSULTANTS, P.A.			
ENGINEERS WICHITA, KANSAS			
Designed by	W.H.K.	Job No.	30-2541
Drawn by	RD	Date	Sept. 18, 74
			Sht. 3 of 6

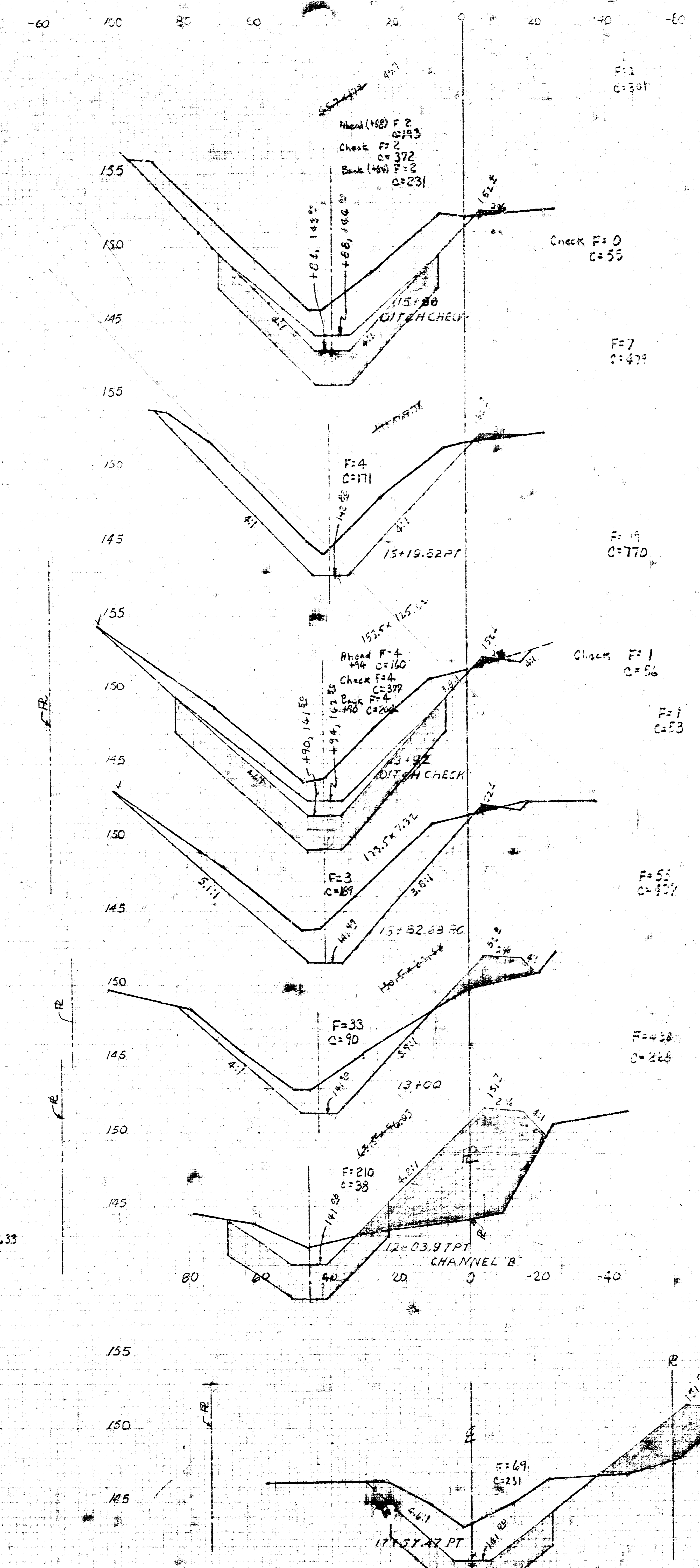
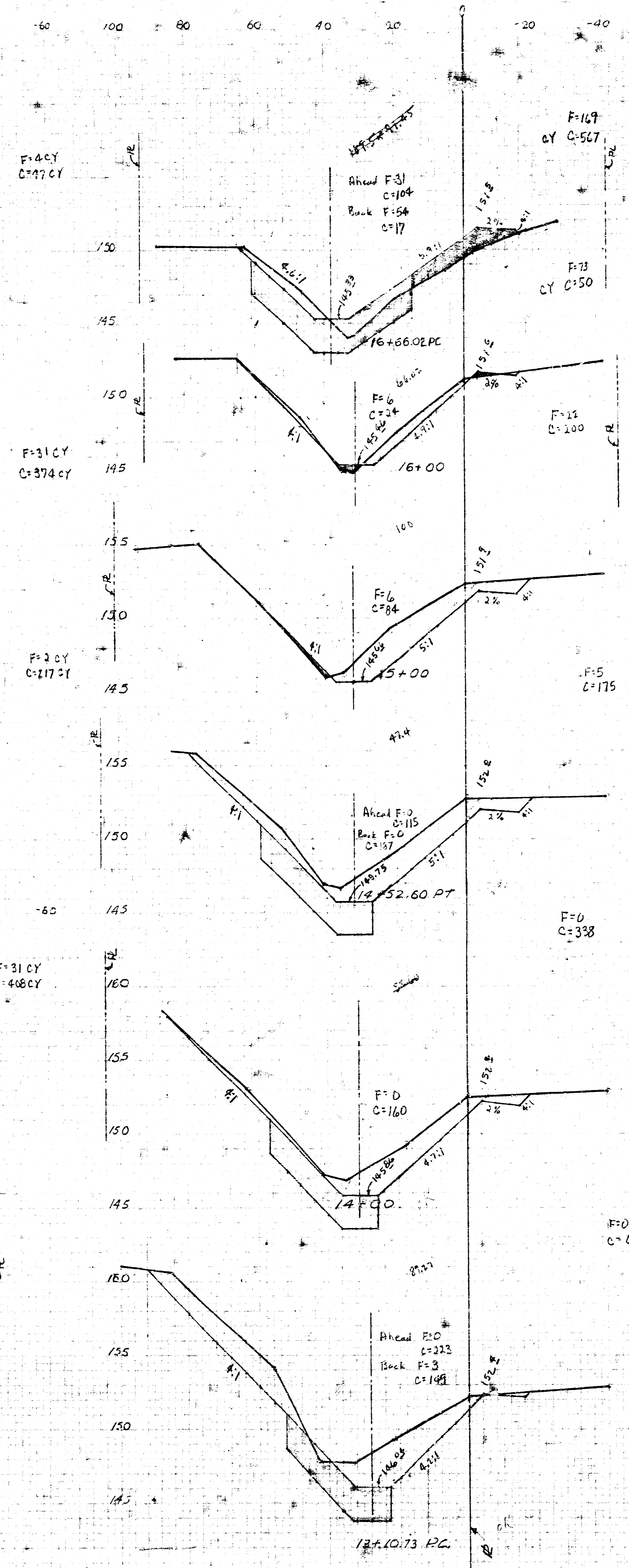
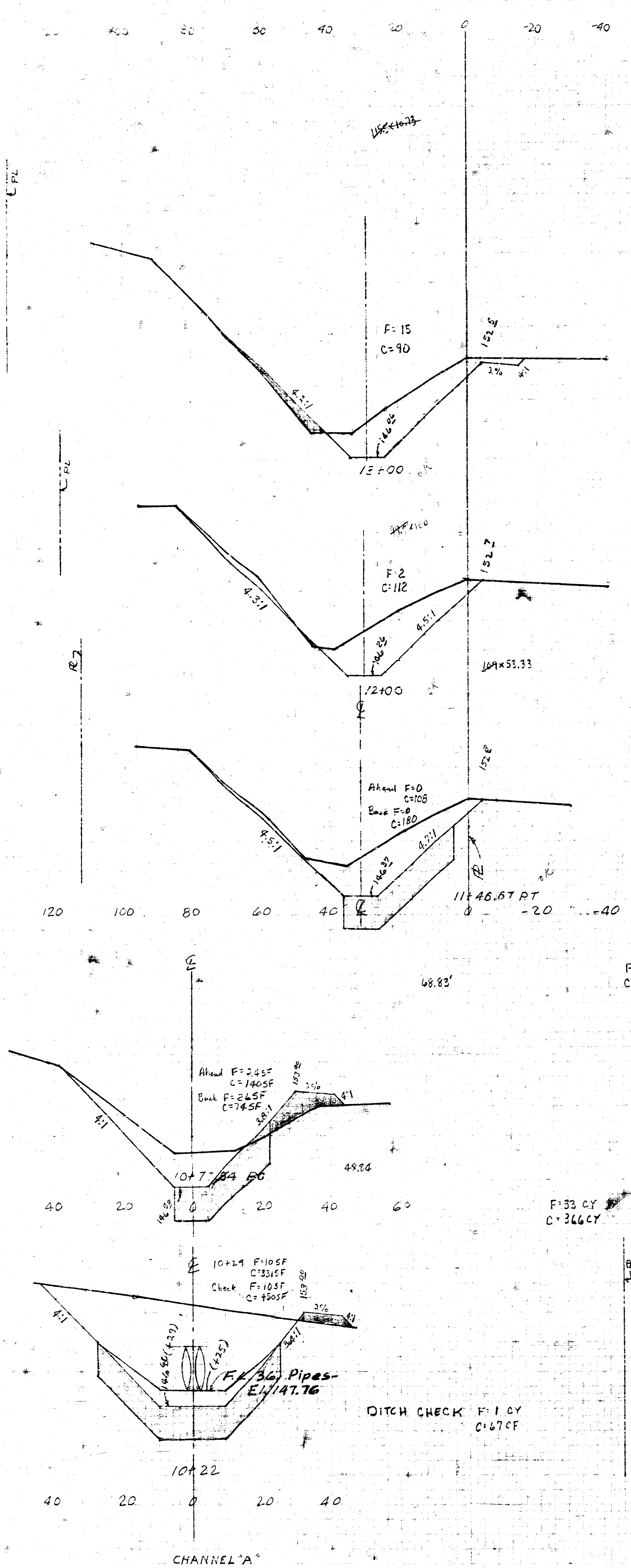
LINCOLN MEADOWS
CHANNEL SECTIONS
CHANNELS A & B
Sheet 1 of 2

See Channel Improvement Plan
by P.E., Sheet 1 for

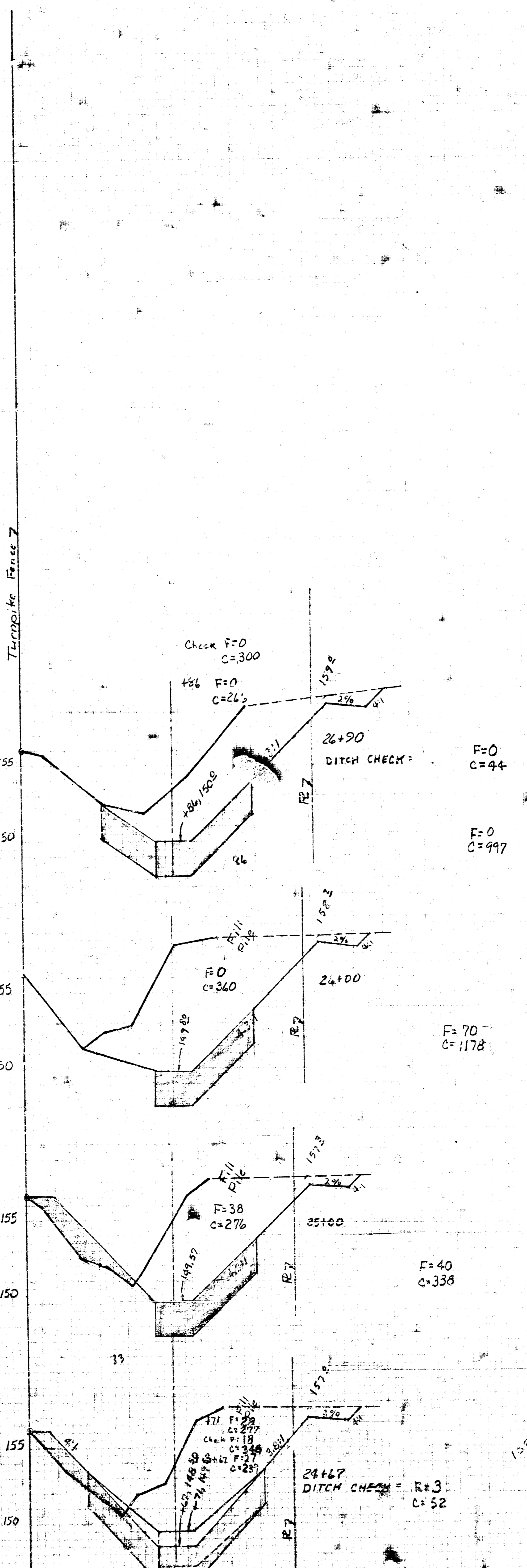
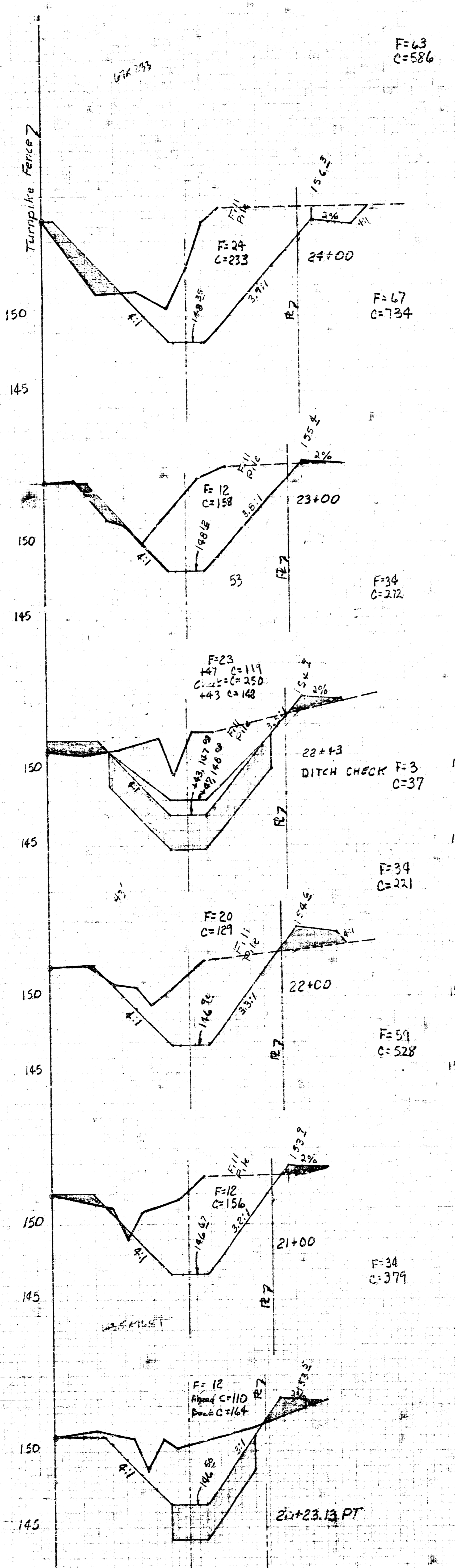
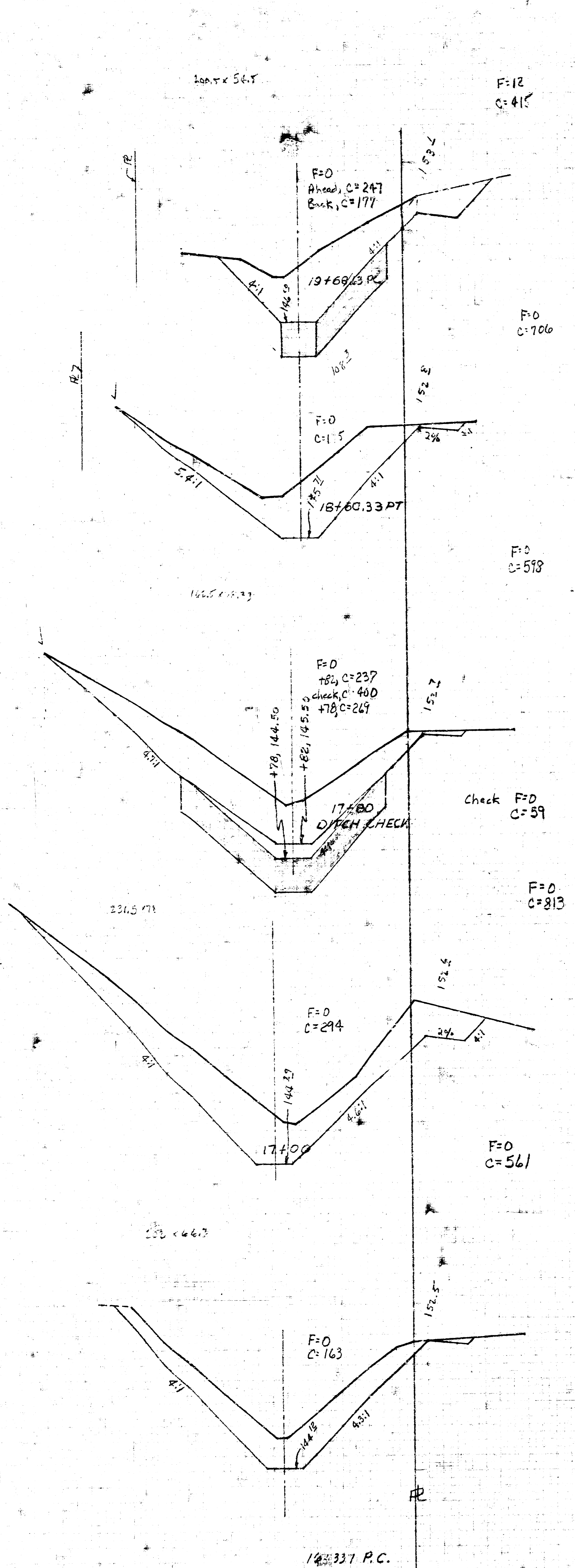
1. Bench marks
2. Stations and location of Channel A & B

Cross Sections in field made on
Sept. 2, 1975

K. O. Taylor, P.E.
Sept 10, 1975



TOTAL THIS SHEET
F=380 CY
C=5811 CY



TOTAL THIS SHEET F=419 C=2518

