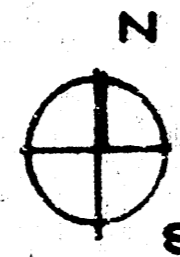
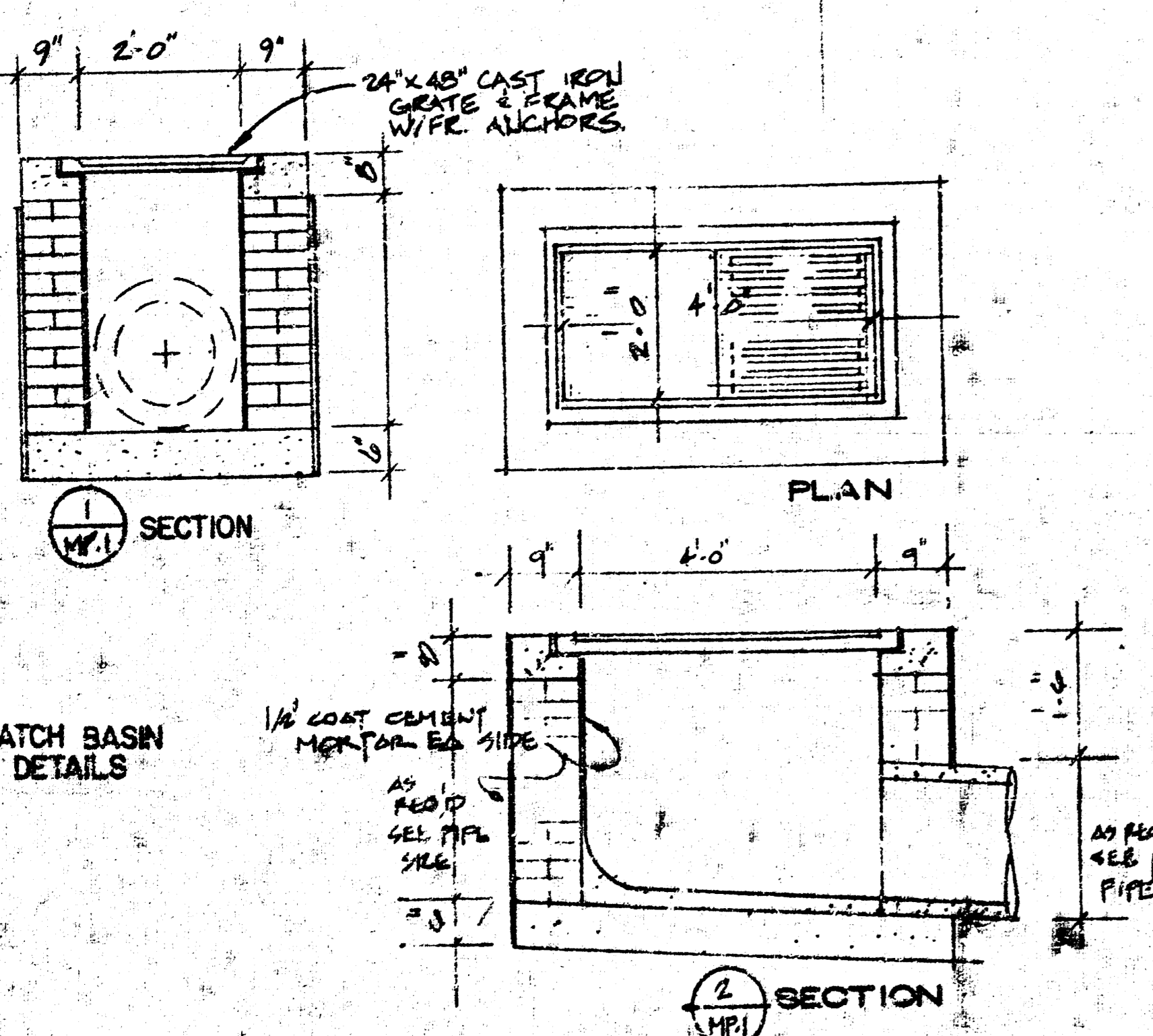


- GENERAL NOTES**
1. Tie all grades into existing grades at the property lines. Should discrepancies occur notify the architect immediately.
  2. All fill shall be controlled fill, compacted and tested according to the specification and shall be observed by the testing lab and tested.
  3. Site grading and drainage have been prepared to meet city retention requirements. Verify with the Architect prior to construction.

NOTE: 24" DIAM INLETS AS PER CITY OF WICHITA STANDARDS.



SITE PLAN SCALE 1" = 20'-0"

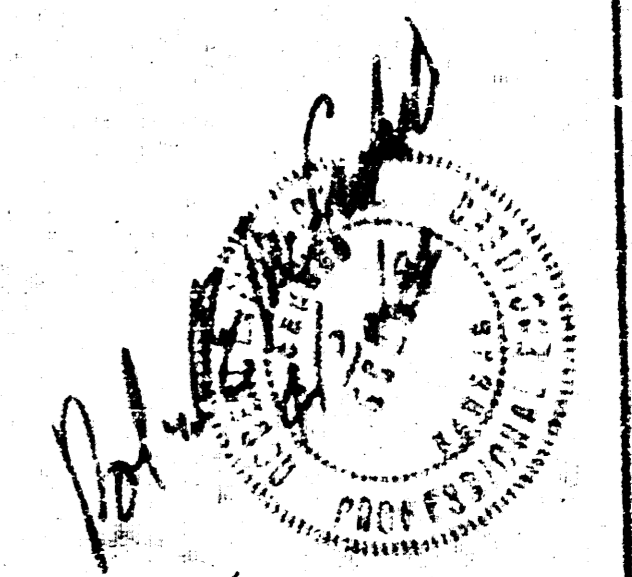
PROJECT DATA

STATEROOMS	50
LOUNGE/DINING	1800 SF
78 SEATS	900 SF
KITCHEN	
BUILDING SF	15,075 SF
GRD FLR	26,860 SF
2ND & 3RD	
TOTAL SF	40,725 SF
PARKING	87 CARS

PRIVATE SEWER FOR PART OF LOT 2, LOTS 3 & 4 OF W.C. ADDITION  
CITY PROJECT NO. 488-78-245-80,000-000-000-008

APPROVED AS NOTED  
By CITY ENGINEER OF WICHITA  
Sanitary Sewers  
Storm Sewers *EBB 5/1/08*  
Driveway Approaches

NOTE TO CONTRACTOR  
This project will be constructed under the supervision of the CITY ENGINEER and conforming to the SPECIFICATIONS of the CITY OF WICHITA. The CONTRACTOR will prepay the City of Wichita for all costs of Inspection.

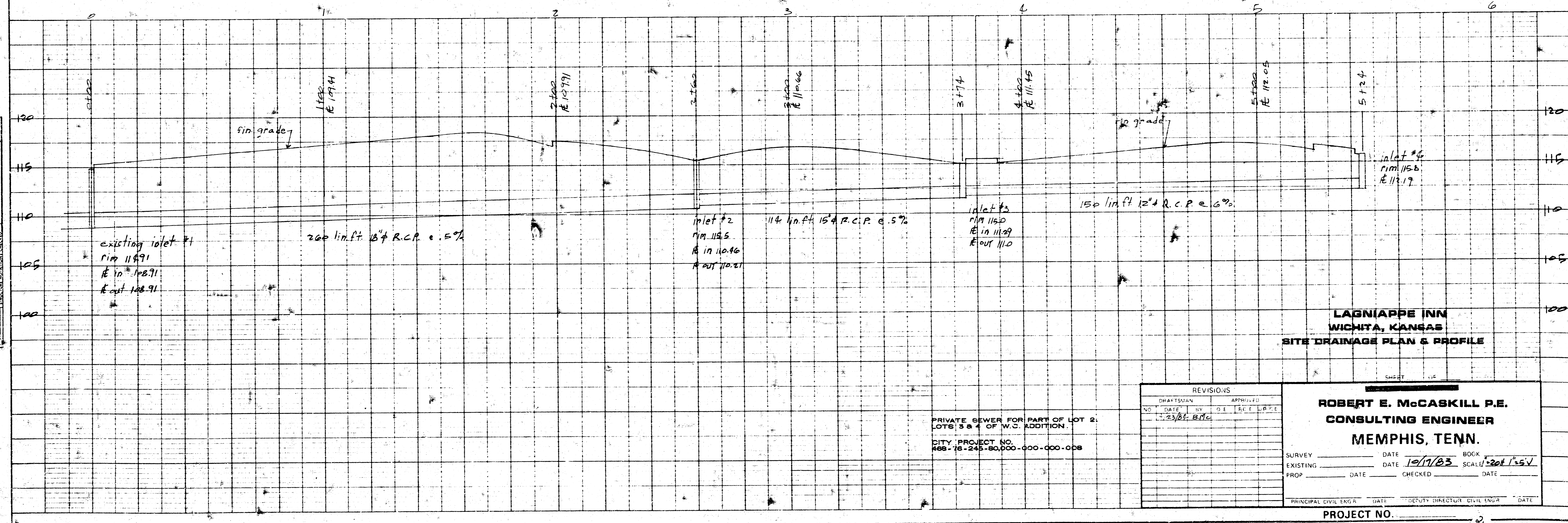
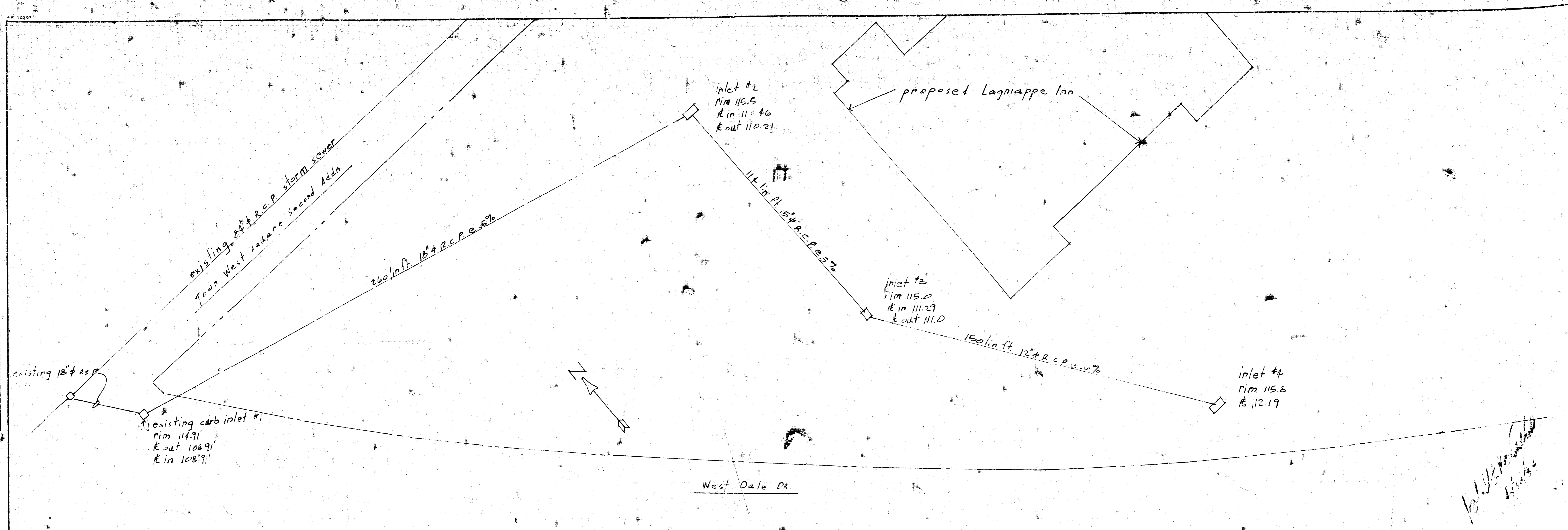


**Lagniappe Inc.**  
ENGINEERS TO LET  
PLANNERS OF SEWER  
WICHITA, KANSAS

1/2

DATE	
BY	
PLAN	
REVISIONS	
NOTE BOOK	
NO.	

DATE	
BY	
PROFILE	
REVISIONS	
NOTE BOOK	
NO.	



**LAGNIAPPE INN  
WICHITA, KANSAS  
SITE DRAINAGE PLAN & PROFILE**

PRIVATE SEWER FOR PART OF LOT 2,  
LOTS 5 & 4 OF W.C. ADDITION.  
CITY PROJECT NO.  
R08-76-245-80,000-000-000-008

REVISIONS	
NO.	DATE
1	10/23/03
2	11/17/03

**ROBERT E. McCASKILL P.E.**  
CONSULTING ENGINEER  
MEMPHIS, TENN.

DATE: 10/17/03  
SCALE: 20ft = 1" SV

PROJECT NO. 14 8 3 0