

# STORM SEWER PLANS FOR WILLOWBEND FOURTH ADDITION

S.W.S. NO.

PRIVATE PROJECT NO.

468-76-245-80001-000-000-109

CITY OF WICHITA, KANSAS  
MICHAEL E. LINDEBAK, CITY ENGINEER

## GENERAL NOTES

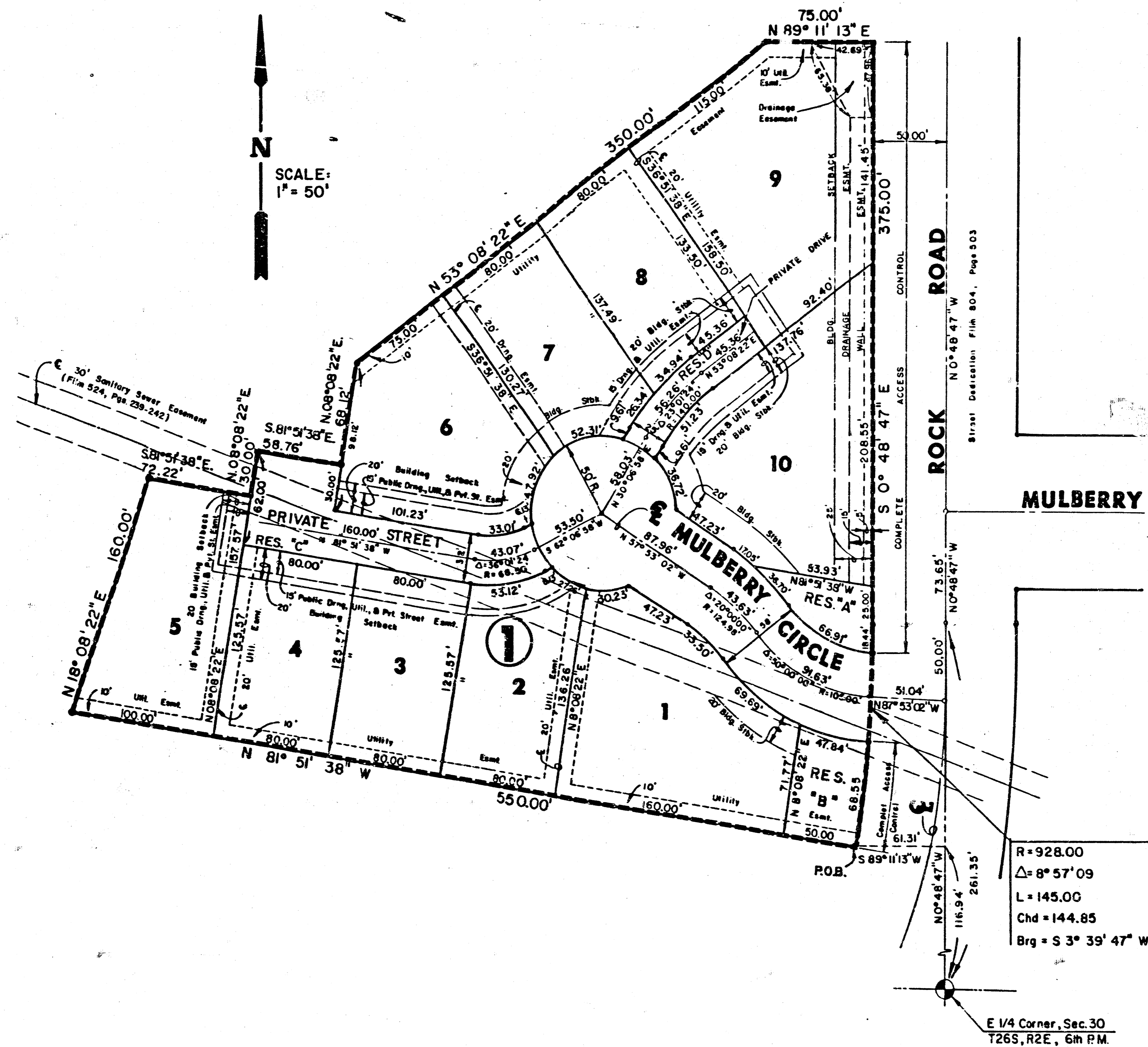
1. THE TOPS OF INLETS AS NOTED ON THE PLANS MAY VARY SO AS TO MEET PROPOSED TOP OF CURB ELEVATIONS OR PAVEMENT ELEVATIONS. THE FIELD ENGINEER SHALL LOCATE INLETS WITH REFERENCE TO PROPOSED PAVING PLANS OF THE PERTINENT STREETS.
2. ALL CONCRETE SHALL BE STANDARD PAVING MIX UNLESS OTHERWISE NOTED.
3. THE CONTRACTOR SHALL BE RESPONSIBLE FOR PRESERVING PROPERTY IRONS. THE CONTRACTOR SHALL BE REQUIRED TO RE-ESTABLISH ANY PROPERTY IRONS WHICH ARE DAMAGED OR DESTROYED BY HIS CONSTRUCTION OPERATIONS. SUCH IRONS SHALL BE RE-ESTABLISHED BY A LICENSED LAND SURVEYOR OR A LICENSED PROFESSIONAL ENGINEER IN ACCORDANCE WITH STATE LAWS.
4. EXISTING UTILITIES AND THEIR LOCATIONS, AS SHOWN ON THE PLANS, REPRESENT THE BEST INFORMATION OBTAINABLE FOR DESIGN. LOCATION INFORMATION HAS BEEN OBTAINED FROM THE VARIOUS UTILITY COMPANIES AND IS EITHER FROM COMPANY RECORD DRAWINGS OR COMPANY PROVIDED FIELD LOCATIONS. THE PLAN LOCATIONS SHOWN ARE NOT GUARANTEED. ADDITIONAL EXISTING UTILITIES MAY ALSO BE ENCOUNTERED.
5. CONSTRUCTION OF THE OUTLET FOR LINE 1 WILL REQUIRE LOWERING OF THE EXISTING LAKE INTO WHICH THIS LINE EMPTIES OR CONSTRUCTION OF A COFFERDAM. THE PLAN SHEET SHOWING THIS OUTLET ALSO SHOW THE SURVEYED WATER LEVEL AND THE DATE OF THE SURVEY. PRESENT WATER LEVELS AND WATER LEVELS AT THE TIME OF CONSTRUCTION MAY VARY FROM THIS SURVEYED WATER LEVEL.

NOTE: NOTIFY THE FOLLOWING COMPANIES PRIOR TO ANY EXCAVATION:-

ARKLA GAS COMPANY	942-8250
BELL TELEPHONE COMPANY	1-316-671-2115
CABLEVISION	262-0661
KPL GAS SERVICE COMPANY	263-7511
KANSAS GAS & ELECTRIC	264-1141

## BENCH MARKS

- BM 1 City Standard, 44' S & 48' W of E of 37th St. No. B Rock Road  
Elev. = 204.11
- BM 2 "L" Cut on NE corner of RCB S 900' N. of E 1/4 corner, Sec. 30, T26S, R2E  
Elev. = 185.36
- BM 3 "L" Cut on SW corner of W Hubguard of Underground Golf Cart Path



## INDEX TO DRAWINGS

SHEET NO.	DESCRIPTION
1	TITLE SHEET
2	PLAN & PROFILE MAIN I
3	FINAL PLAT

APPROVED AS NOTED  
By CITY ENGINEER OF WICHITA  
Sanitary Sewers  
Storm Sewers VRH 5/26/87  
Driveway Approaches

## NOTE TO CONTRACTOR

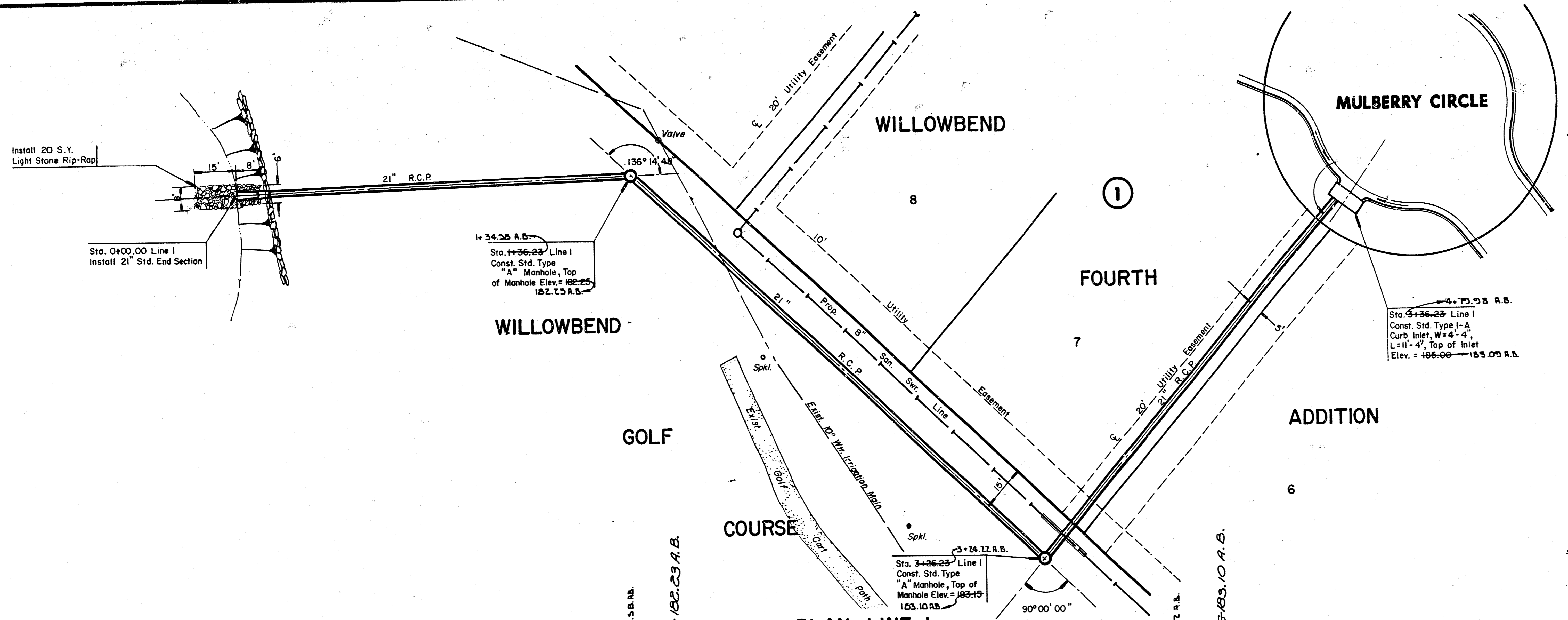
This project will be constructed under the supervision of the CITY ENGINEER and conforming to the SPECIFICATIONS of the CITY OF WICHITA. The CONTRACTOR will pay the City of Wichita for all costs of plan review, inspection and booking per contract.

AS BUILT JULY, 1987

	WILLOWBEND FOURTH ADDITION	Group KRL
	STORM WATER SEWER PLANS	Drawn by DDG
MID-KANSAS ENGINEERING CONSULTANTS PA 3500 NORTH ROCK ROAD BUILDING #800 WICHITA, KANSAS 67226		Checked by Date No. no
682-6561		Sheet 1 1/3 3

FILMED FROM THE BEST AVAILABLE COPY.....

WILLOWBEND FOURTH ADDITION  
 STORM WATER SEWER PLANS  
 PROJ. NO. 468-76-245-80001-000-000-109

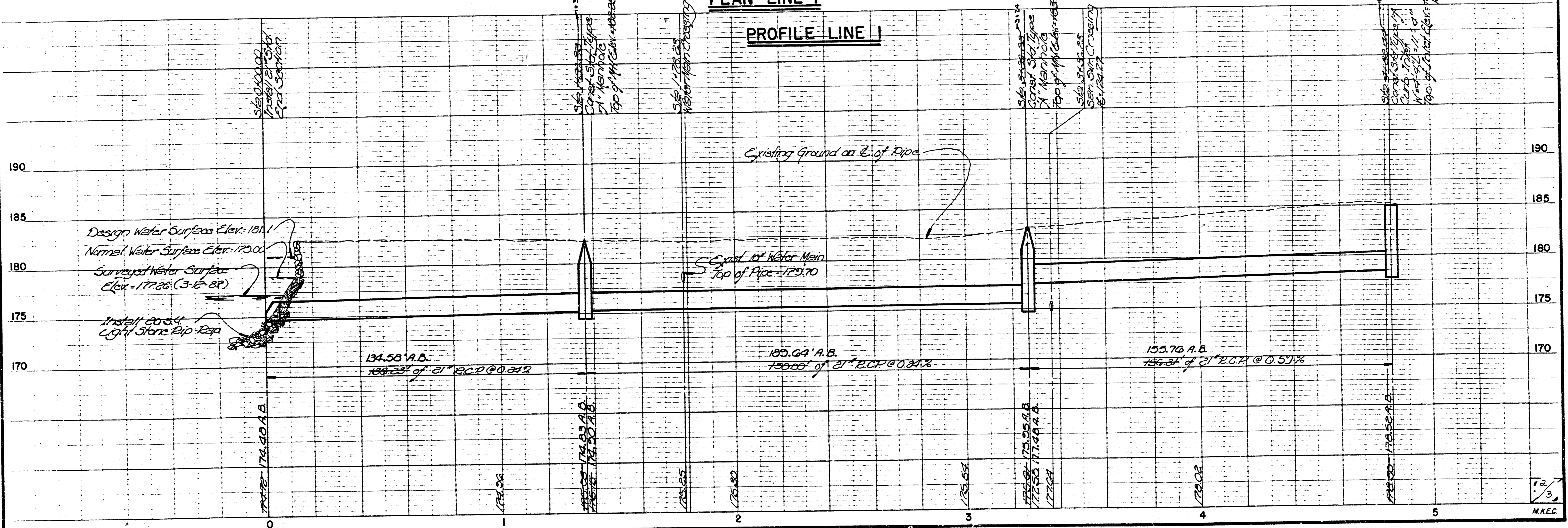


SCALE:  
 1" = 20', Horiz.  
 1" = 5', Vert.

AS BUILT JULY, 1987

PLAN LINE I

PROFILE LINE I



FILMED FROM THE BEST  
 AVAILABLE COPY.....

C-1 6-34

C-1 6-34

# FINAL PLAT OF WILLOWBEND FOURTH ADDITION

AN ADDITION TO WICHITA, SEDGWICK COUNTY, KANSAS

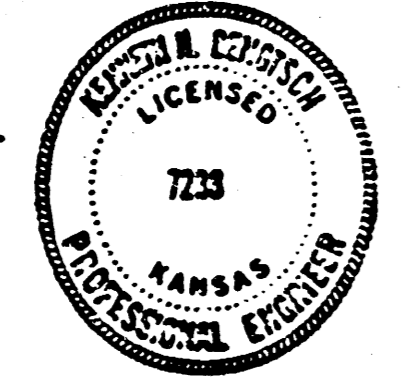
I, Kenneth H. Bengtson, a Civil Engineer in Kansas, do hereby certify that I have been in responsible charge of surveying and platting of "WILLOWBEND FOURTH ADDITION" an addition to Wichita, Sedgwick County, Kansas, into Lots, Blocks, Street, and Reserves, the same being accurately set forth in the accompanying plat and described as follows:

A tract of land lying in the Northeast Quarter, Section 30, Township 26 South, Range 2 East of the 6th P.M., more particularly described as follows:

Commencing from the Southeast corner of said Northeast Quarter; thence N 0° 48' 47" W, 116.94 feet; thence S 89° 11' 13" W, 61.31 feet to the point of beginning; thence N 81° 51' 38" W, 550.00 feet; thence N 18° 08' 22" E, 160.00 feet; thence S 81° 51' 38" E, 72.22 feet; thence N 08° 08' 22" E, 30.00 feet; thence S 81° 51' 38" E, 58.76 feet; thence N 08° 08' 22" E, 68.12 feet; thence N 53° 08' 22" E, 350.00 feet; thence N 89° 11' 13" E, 75.00 feet; thence S 00° 48' 47" E, 375.00 feet to a point on a curve to the right; thence 145.00 feet along said curve having a central angle of 08° 57' 09", a radius of 928.00 feet, and a long chord of 144.85 feet, bearing S 03° 39' 47" W to the point of beginning.

I hereby certify that the details of this plat are correct to the best of my knowledge and belief this 25 day of November 1986.

*Kenneth H. Bengtson*  
Kenneth H. Bengtson, P.E.  
Mid-Kansas Engineering Consultants, P.A.  
3500 W. Rock Road Building 800  
Wichita, KS 67226



Know all men by these presents that we the undersigned property owners of the land as above set forth in the Civil Engineers Certificate, have caused the same to be surveyed and platted into Lots, Blocks, Reserves and a street, the same to be known as "WILLOWBEND FOURTH ADDITION", an addition to Wichita, Sedgwick County, Kansas. The street is hereby dedicated to and for the use of the public. Reserves are platted for the construction and maintenance of public utilities and drainage. Reserves "A" and "B" are also platted for entrance monuments, landscaping and open spaces. Reserve "C" is also platted as a private drive to serve Lots 7, 8, 9, and 10, Block 1. The Reserves shall be owned and maintained by the Homeowners Association. Easements for the construction and maintenance of private streets, public utilities and drainage, as indicated on the accompanying plat, are hereby granted. The well easement is hereby platted for the purpose of construction and maintenance of a private well. All abutters rights of access to and from Rock Road over and across the East line of Lots 9 and 10 and Reserves "A" and "B" are hereby granted to the City of Wichita, Kansas.

GOLF COURSES OF AMERICA, INC.  
By: *Frank A. Mills*  
Frank A. Mills, President

STATE OF KANSAS )  
SEDGWICK COUNTY ) ss:  
Be it remembered that on this 27th day of November, 1986, before me a Notary Public in and for said State and County, came Golf Courses of America, Inc. by Frank A. Mills, President, to me personally known to be the same person who executed the foregoing instrument of writing and duly acknowledged the execution of the same. In testimony whereof I have hereunto set my hand and affixed my notarial seal the day and year above written.

*John A. Kaufman* Notary Public  
My Appointment Expires: June 9, 1988

We, the Bank Audi (USA), mortgagees on the above described property, do hereby consent to the plat of "WILLOWBEND FOURTH ADDITION".

BANK AUDI (USA)  
By: *Phillip S. Frick*  
Phillip S. Frick, Attorney-in-Fact

STATE OF KANSAS )  
SEDGWICK COUNTY ) ss:  
Be it remembered that on this 27th day of November, 1986, before me a Notary Public in and for said State and County, came Phillip S. Frick, Attorney-in-Fact on behalf of Bank Audi (USA), to me personally known to be the same person who executed the foregoing instrument of writing and duly acknowledged the execution of the same. In testimony whereof I have hereunto set my hand and affixed my notarial seal the day and year above written.

*Patricia L. Wassinger* Notary Public  
My Appointment Expires: Patricia L. Wassinger

This plat of "WILLOWBEND FOURTH ADDITION" has been submitted to and approved by the Wichita-Sedgwick County Metropolitan Area Planning Commission, Wichita, Kansas.  
Dated this 13th day of November, 1986.

WICHITA-SEDGWICK COUNTY METROPOLITAN AREA PLANNING COMMISSION  
*John Jerry Moore* Chairman  
*William J. ...* Secretary  
Wichita, Kansas

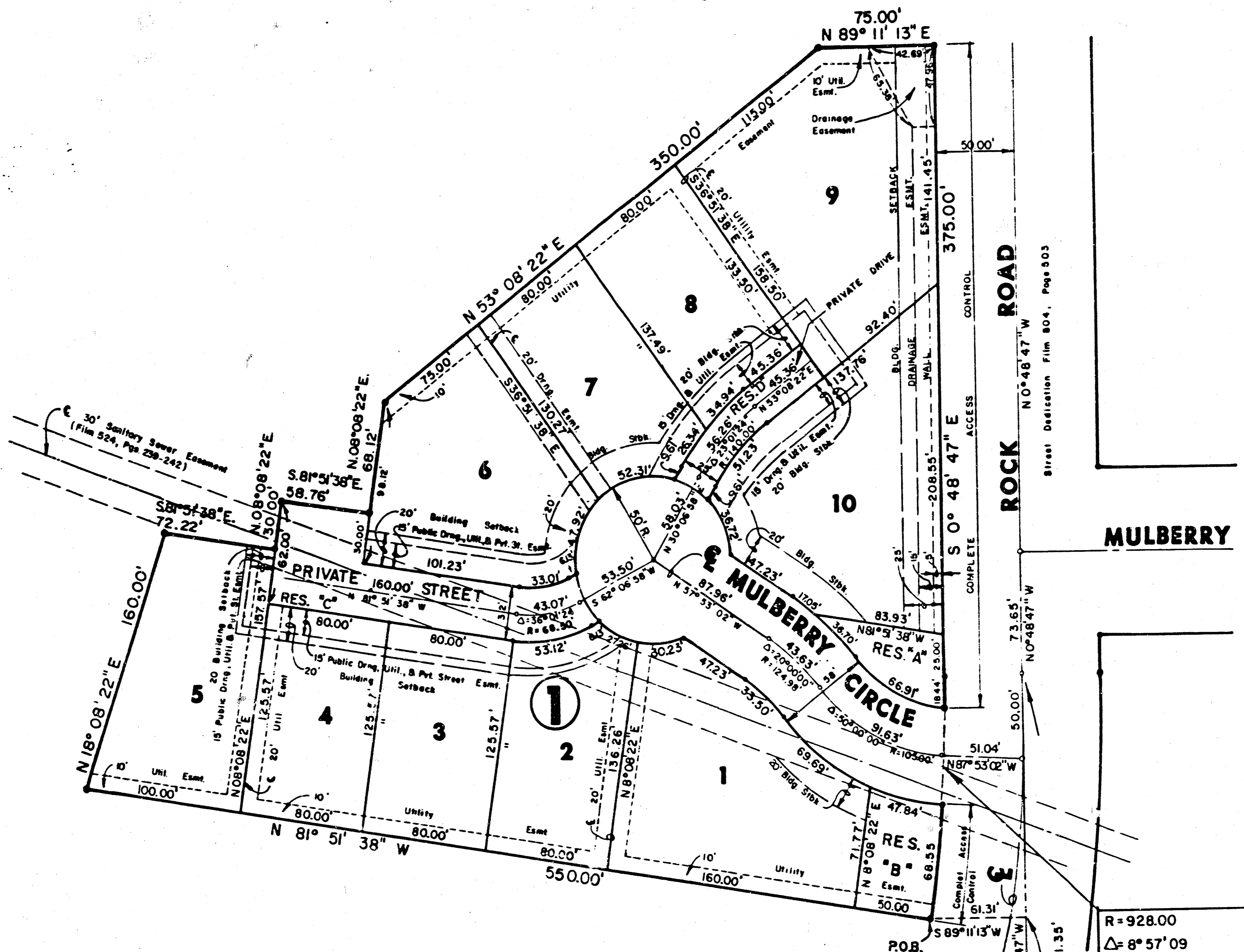
This plat approved and all dedications shown hereon, if any, accepted by the City Commission of the City of Wichita, Kansas, this 27th day of November, 1986.

*Tony Casado* Mayor  
*Calvin E. ...* City Clerk

Entered on transfer record this 19th day of November, 1986.  
*Pat ...* County Clerk

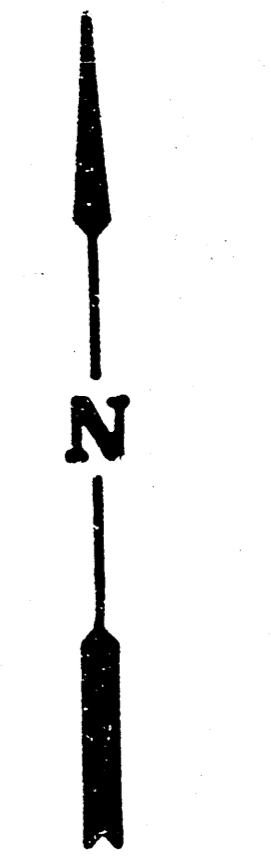
STATE OF KANSAS )  
SEDGWICK COUNTY ) ss:  
This is to certify that this instrument was filed for record in the Register of Deeds office this 19th day of December, 1986.

*Pat ...* Register of Deeds  
*Ed ...* Deputy



R = 928.00  
Δ = 8° 57' 09"  
L = 145.00  
Chd = 144.85  
Brq = S 3° 39' 47" W

E 1/4 Corner, Sec. 30  
T26S, R2E, 6th P.M.



Scale 1" = 50'

Sheet 3  
3/3

14 2 5 10

C-1 6-34

Restrictive Covenant F.854 P.343

FILMED FROM THE BEST AVAILABLE COPY