

CAPACITY DATA - NORTH LAKE			
ELEVATION	SURFACE AREA ACRES	STORAGE AC. FT.	CUMULATIVE STORAGE AC. FT.
168	0.84		
169	0.95	0.90	0.90
170	1.11	1.03	1.93

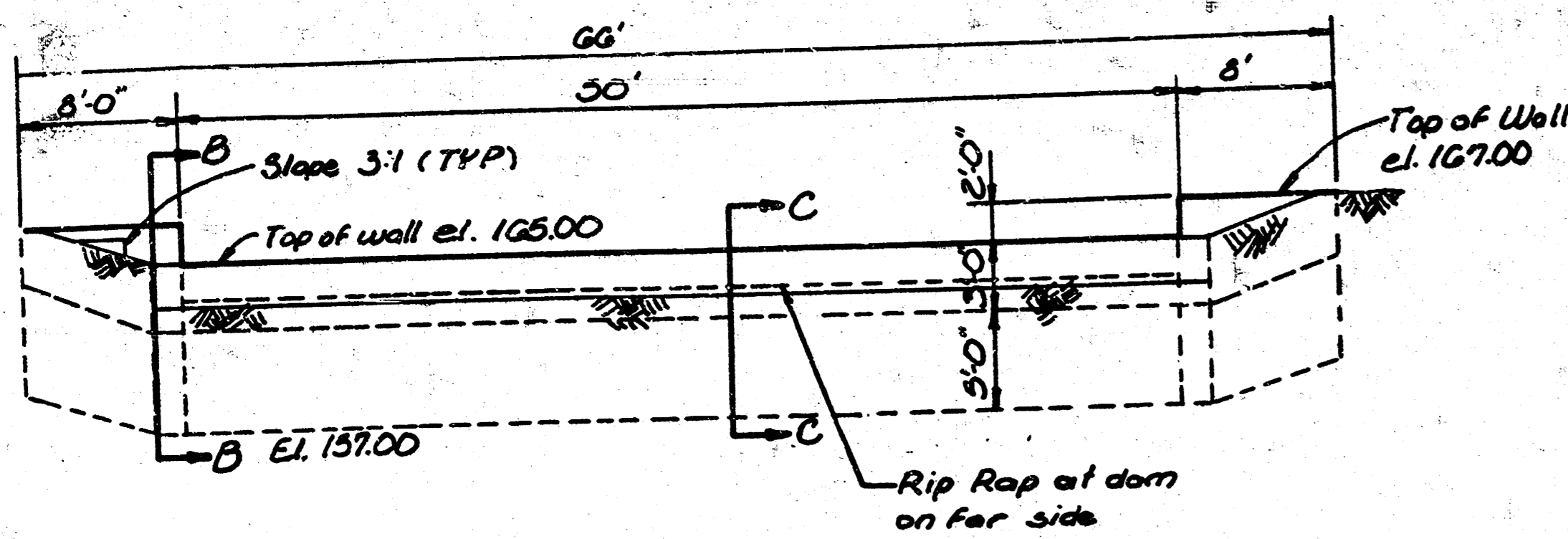
CAPACITY DATA - SOUTH LAKE			
ELEVATION	SURFACE AREA ACRES	STORAGE AC. FT.	CUMULATIVE STORAGE AC. FT.
165	1.02		
166	1.12	1.07	1.07
167	1.28	1.20	2.27

N

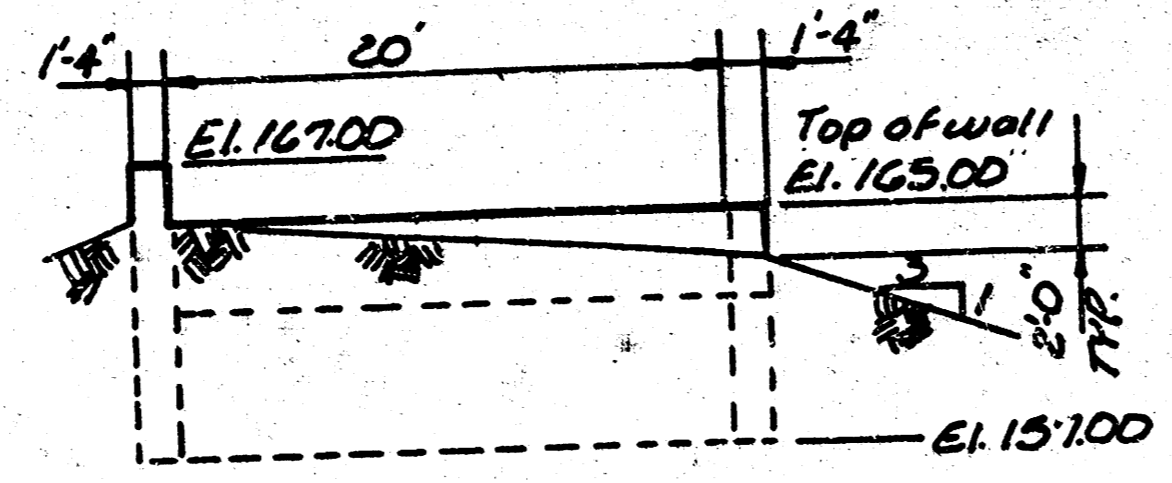
SCALE 1" = 200'

	DRAINAGE AREA MAP WOODLAND ESTATES SECOND	Design F. R. M. K. S.
		Drawn by E. C. G.
		Checked by
		Date
MID-KANSAS ENGINEERING CONSULTANTS PA 3500 NORTH ROCK ROAD BUILDING #800 WICHITA, KANSAS 67226		Sheet 2 of 3
682-6561		

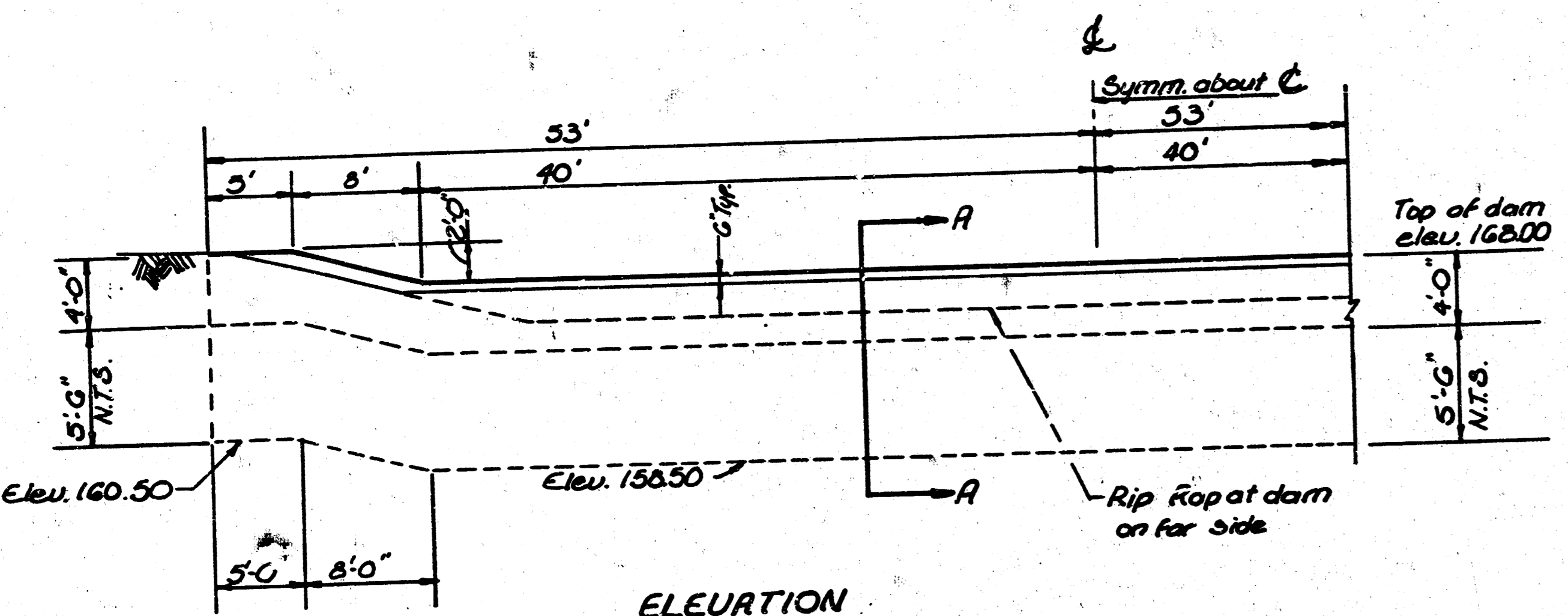
FILMED FROM THE BEST AVAILABLE COPY



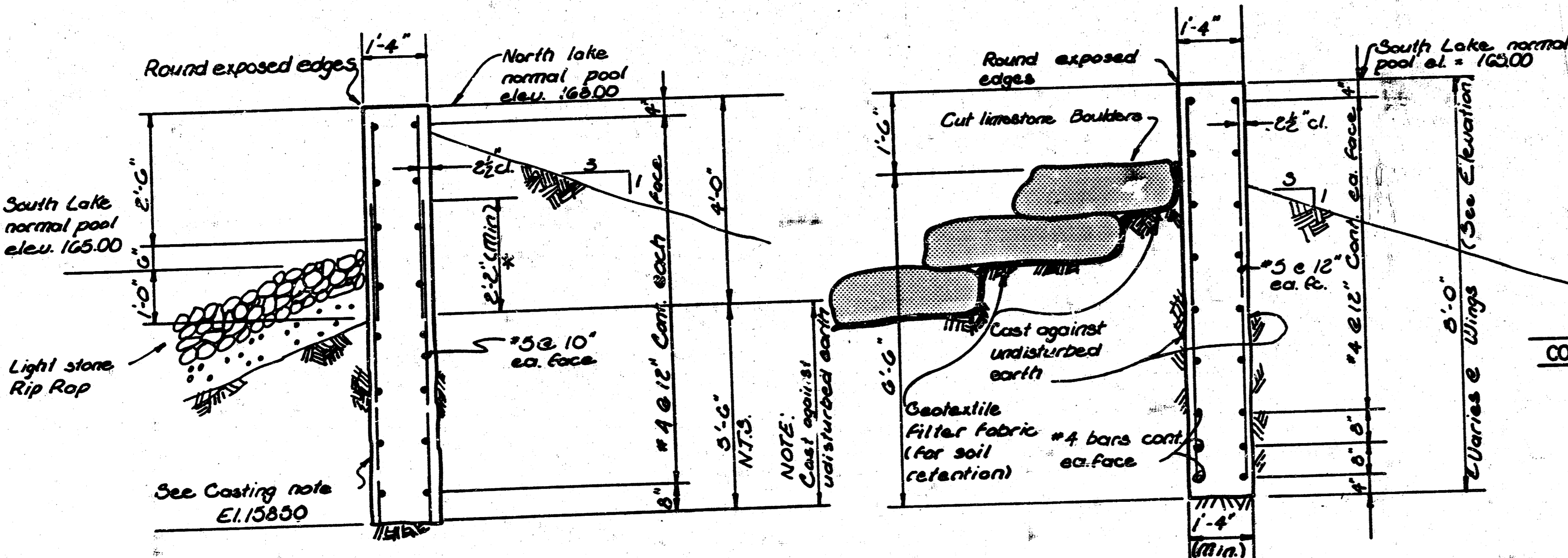
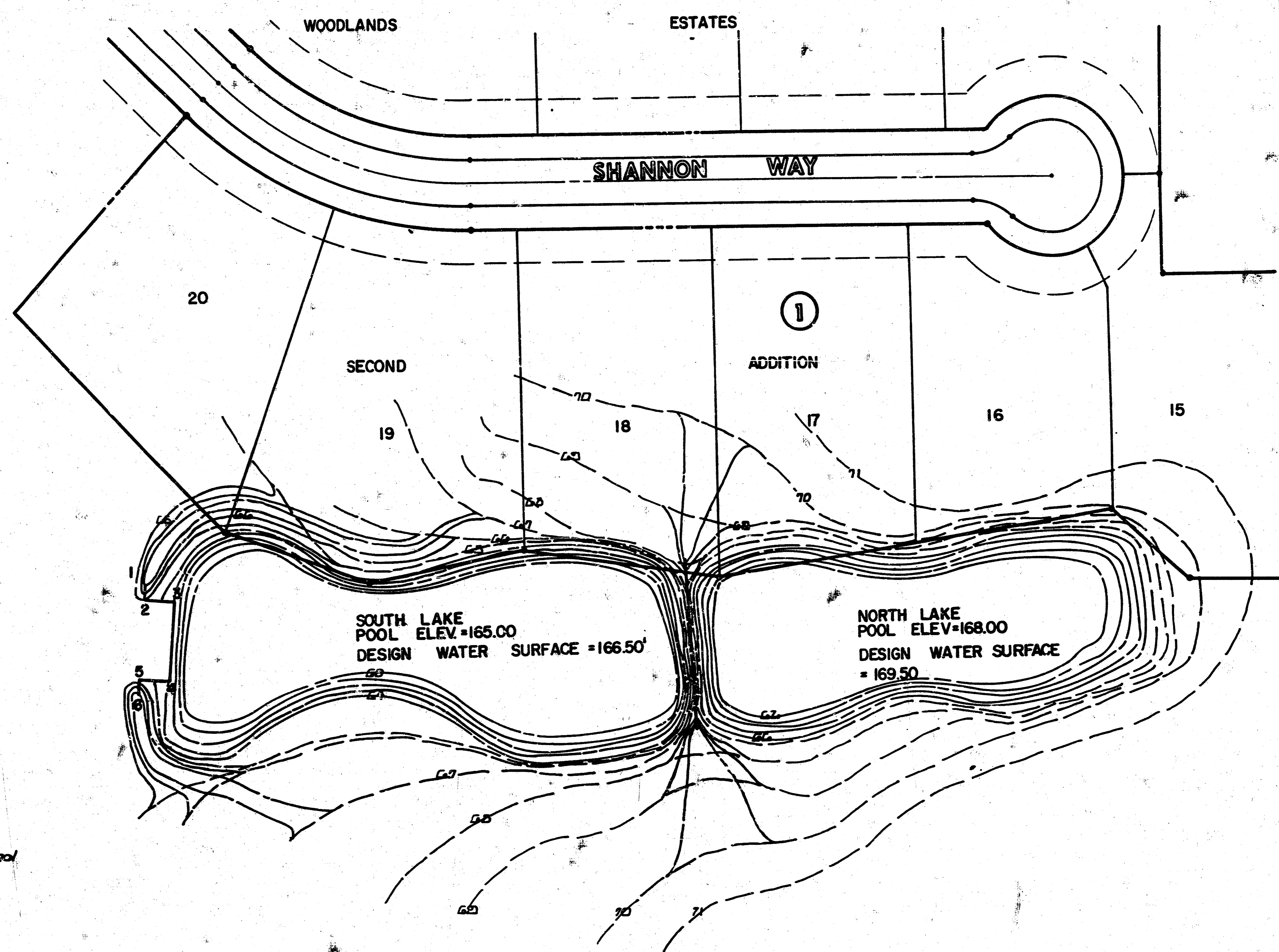
ELEVATION SOUTH LAKE WEIR
Looking down stream
scale 1/8" = 1'-0"



SECTION B-B
scale 1/8" = 1'-0"



ELEVATION NORTH LAKE WEIR
(Looking downstream)
scale 1/8" = 1'-0"



SECTION C-C
Scale 1/2" = 1'-0"
SOUTH LAKE

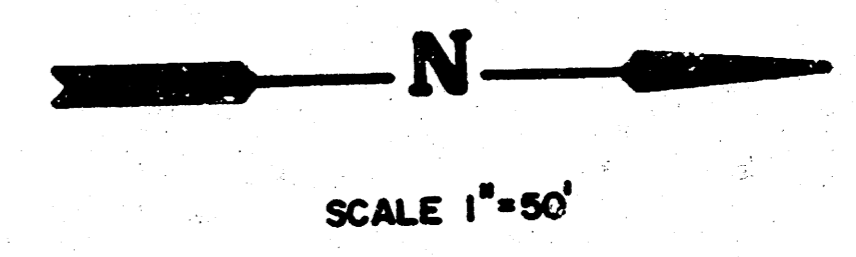
SECTION A-A
scale 1/8" = 1'-0"
NORTH LAKE

The concrete mix specified for the City of Wichita concrete pavement shall be used throughout. Bevel all exposed edges with a 1" triangular mounding, unless otherwise noted.

SOUTH LAKE		
CONTROL PTS.	DESCRIPTION	COORDINATES
1	DOWNSTREAM FACE WEST WING	N. 6924.8102 E. 1842.4293
2	DOWNSTREAM FACE E.COR. WEST WING	N. 6924.2360 E. 1850.4086
3	DOWNSTREAM FACE N.E. COR.	N. 6945.5143 E. 1851.9397
4	DOWNSTREAM FACE N.W. COR.	N. 6941.9259 E. 1901.8107
5	DOWNSTREAM FACE W. COR. E. WING	N. 6920.6476 E. 1900.2797
6	DOWNSTREAM FACE EAST WING	N. 6920.0735 E. 1908.2591

WEIR ORIENTATION: S.85°53'04" E.

NORTH LAKE	
WEIR	N. 7281.9224
DOWNSTREAM FACE	E. 1883.9770
WEIR ORIENTED N.87°44'08" E	



SW. COR. SE. 1/4
SEC. 17, T. 27S. R. 2E.
N. 4987184L
E. 1006.5187

**LAKES
IN
WOODLAND ESTATES
SECOND**

Design
E.C.E.
Drawn by
E.C.E. K.J.S.
Checked by
Date
Job no.

MID-KANSAS ENGINEERING CONSULTANTS PA
3500 NORTH ROCK ROAD
BUILDING #800
WICHITA, KANSAS 67226

682-6561

Sheet **3**
of **3**

FILMED FROM THE BEST AVAILABLE COPY