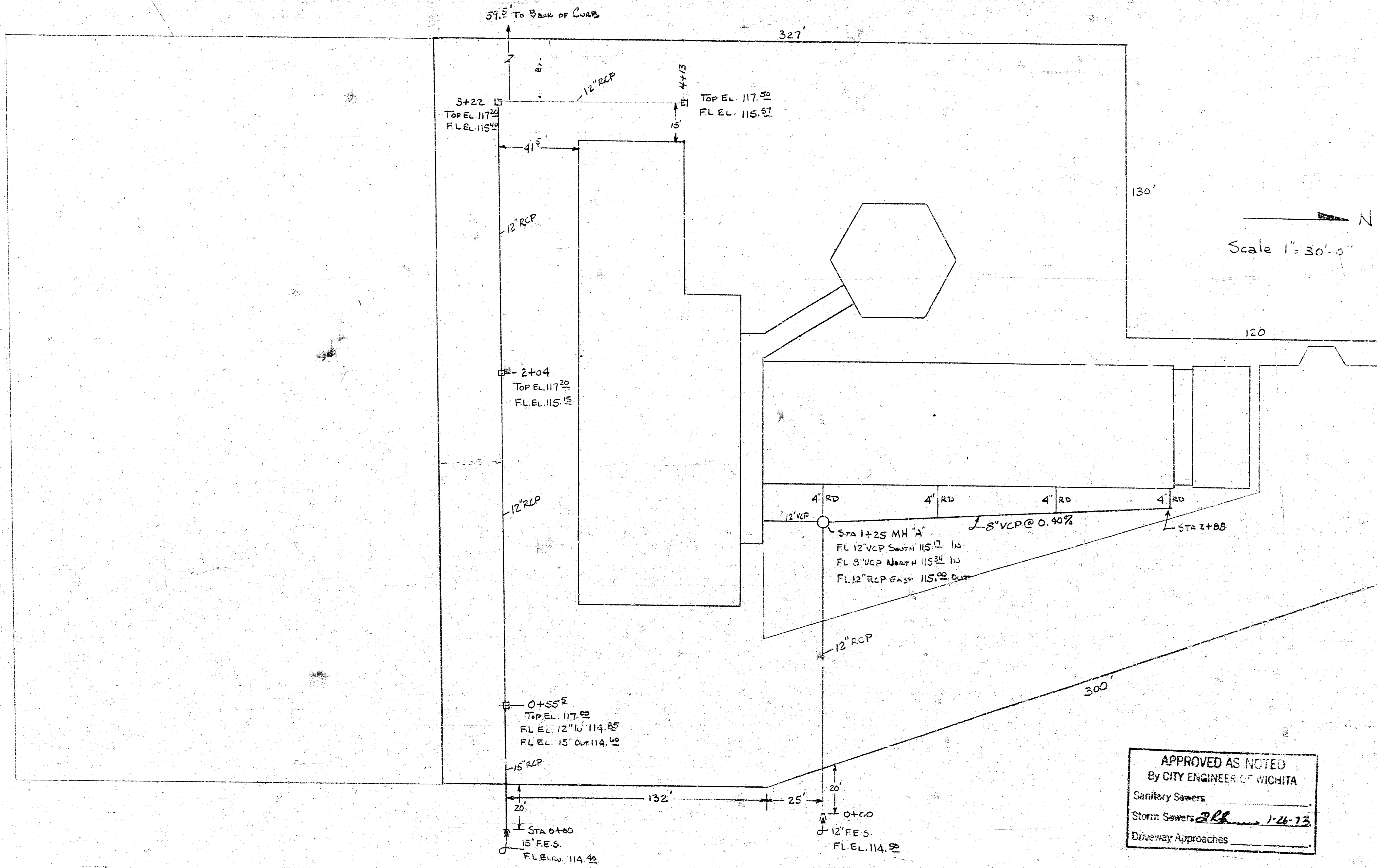


HOOVER ROAD

U.S. 54 (KELLOGG ST) WESTBOUND LAJE



STORM SEWER QUANTITIES

15" RCP	56 LF
12" RCP	462 LF
12" VCP	25 LF
8" VCP	105 LF
MANHOLE A	1 EA
2X2 INCHES	4 EA

APPROVED AS NOTED
By CITY ENGINEER OF WICHITA

Sanitary Sewers _____
Storm Sewers *RLH* 1-26-73
Driveway Approaches _____

NOTE TO CONTRACTOR
This project will be constructed under the supervision of the CITY ENGINEER and conforming to the SPECIFICATIONS of the CITY OF WICHITA. The CONTRACTOR will reimburse the City of Wichita for all cost of Engineering, Plans, and Inspection.

SHERATON INN
WICHITA KANSAS

PLOT PLAN
STORM DRAINAGE
MID STATES CONST. CO., INC
NOVEMBER 1972 AS BUILT DRAWING