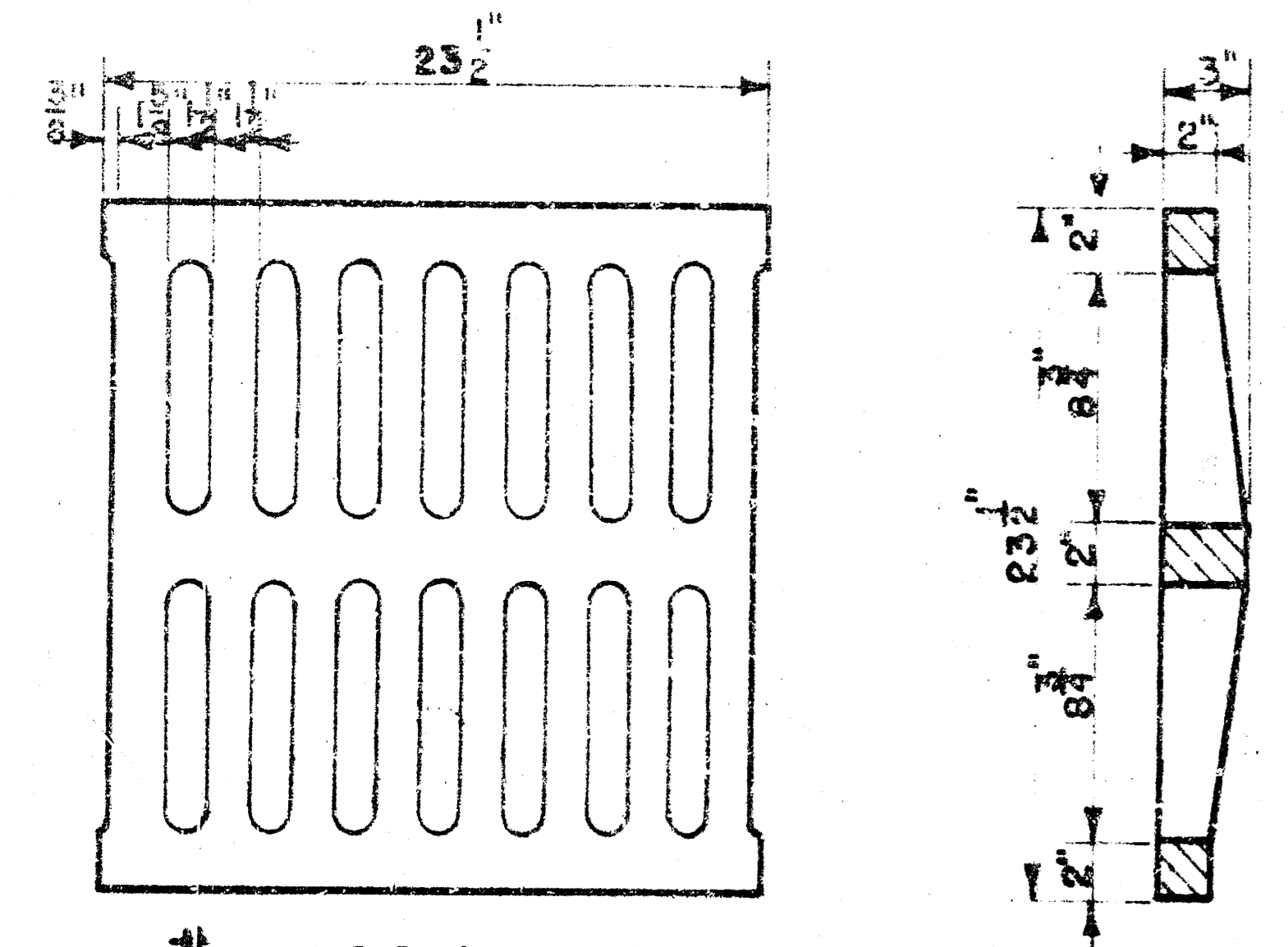
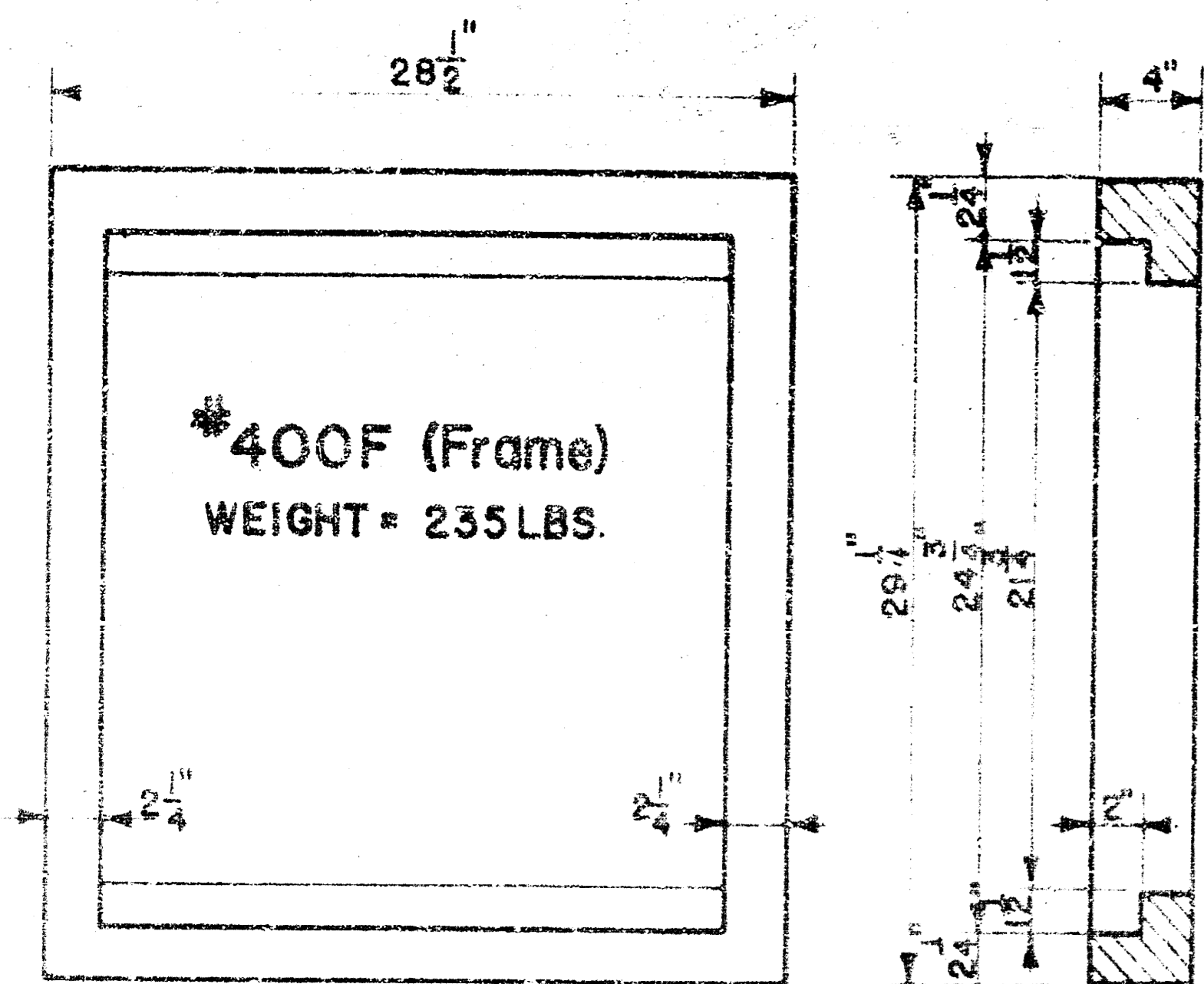
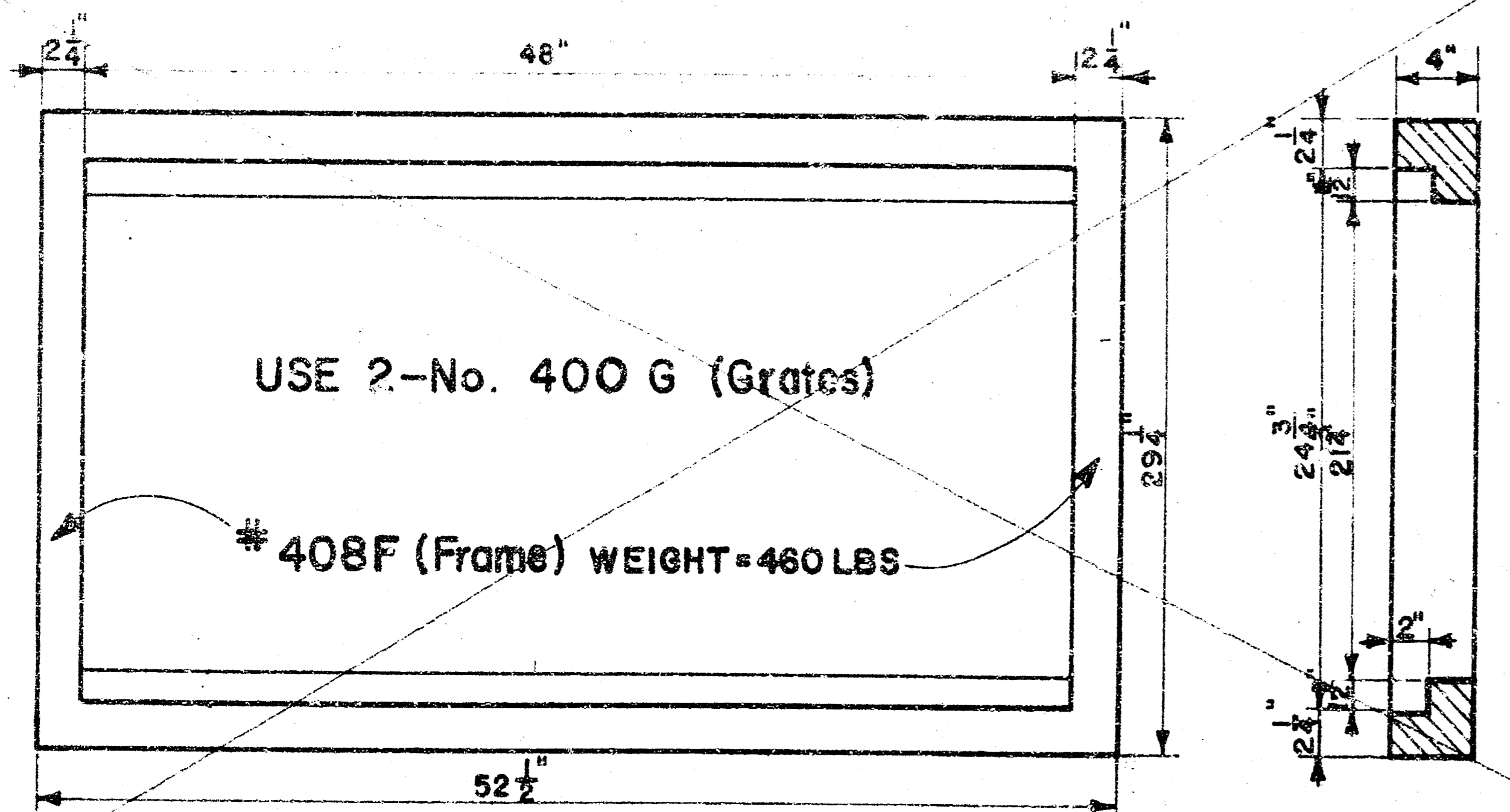


NOTE: Grates shall be imprinted on the top surface with "CITY OF WICHITA" using letters at least 1" in height. Other marking methods may be used only if approved by the engineer.

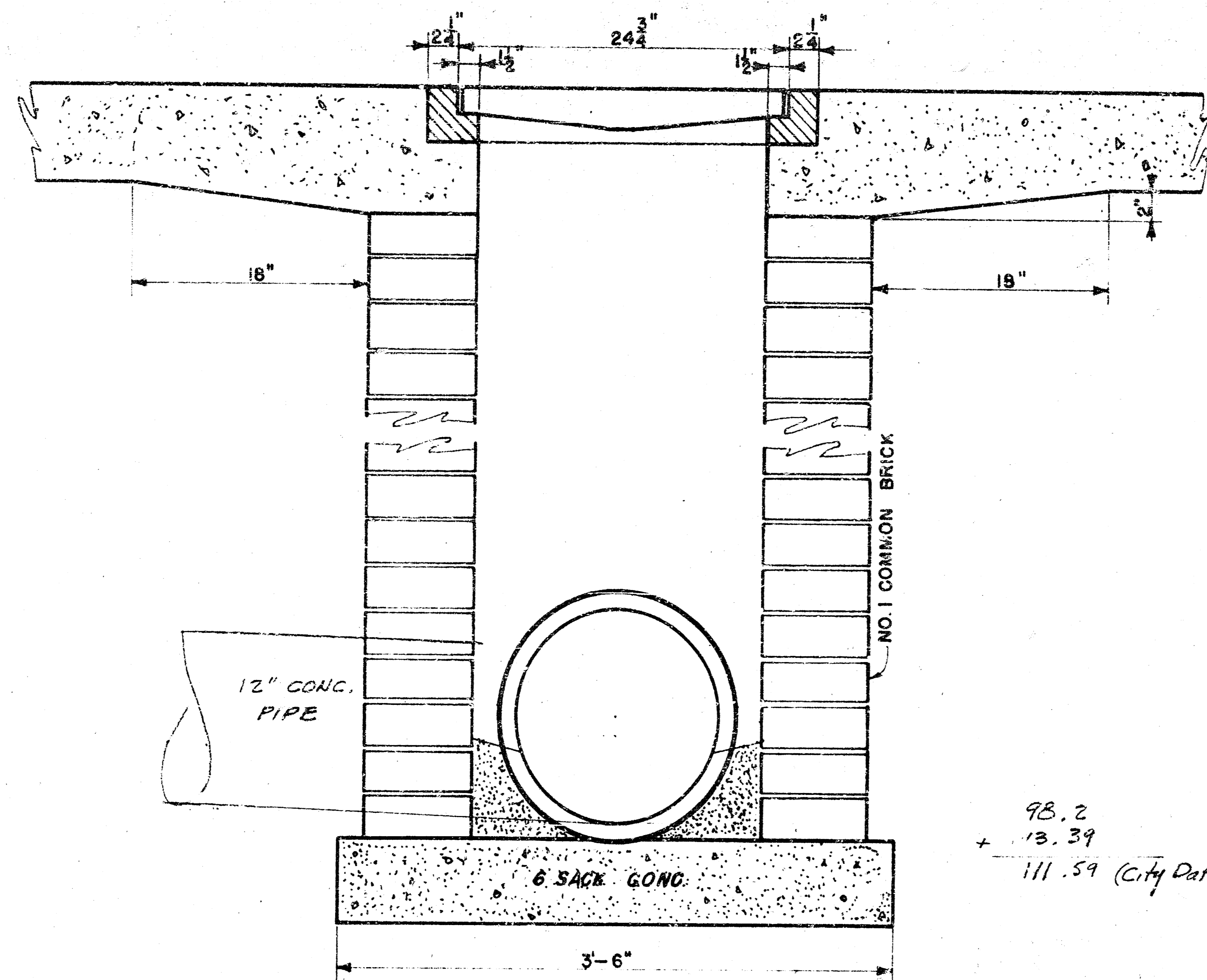


#400G (Grate)
WEIGHT = 235 LBS

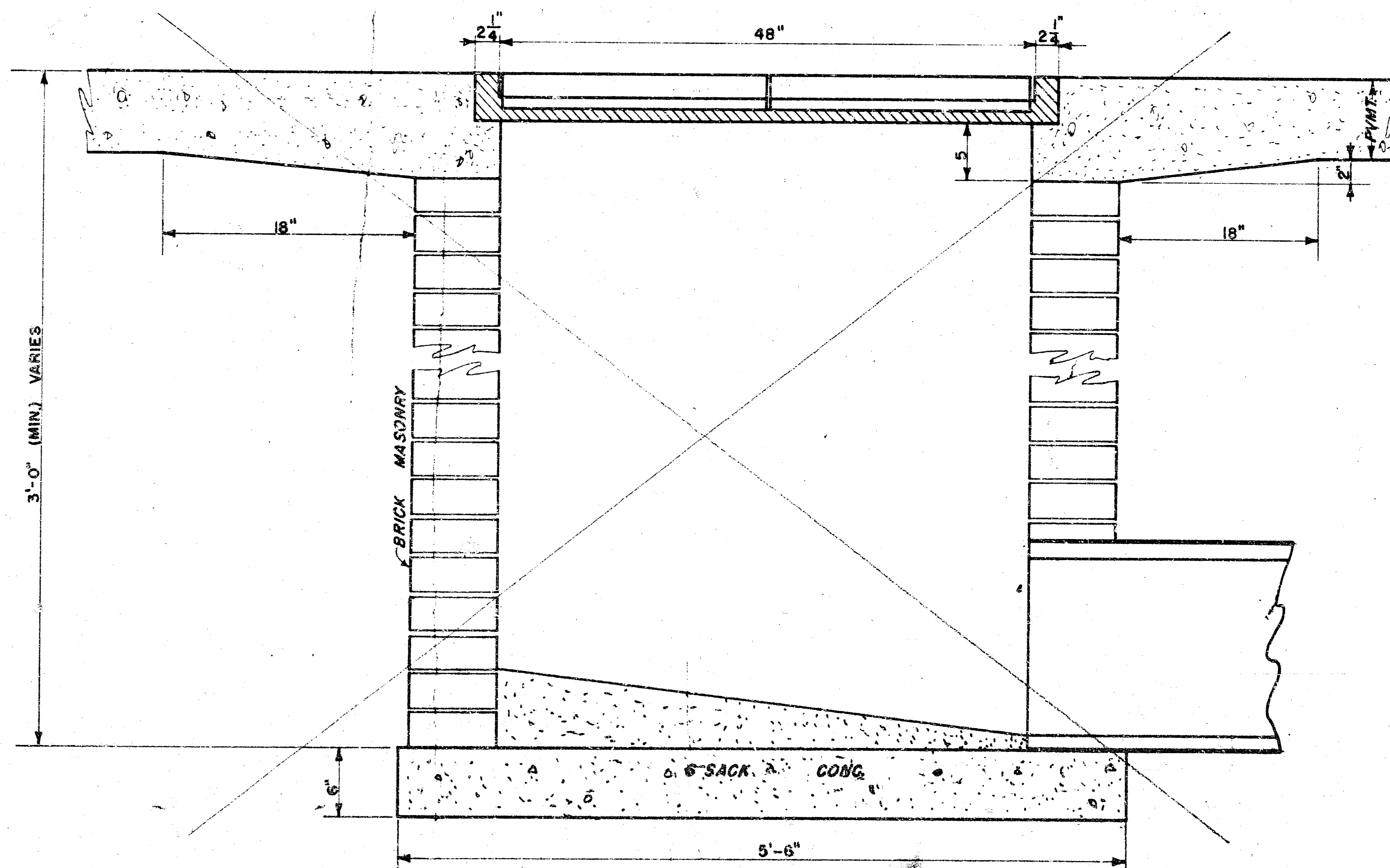
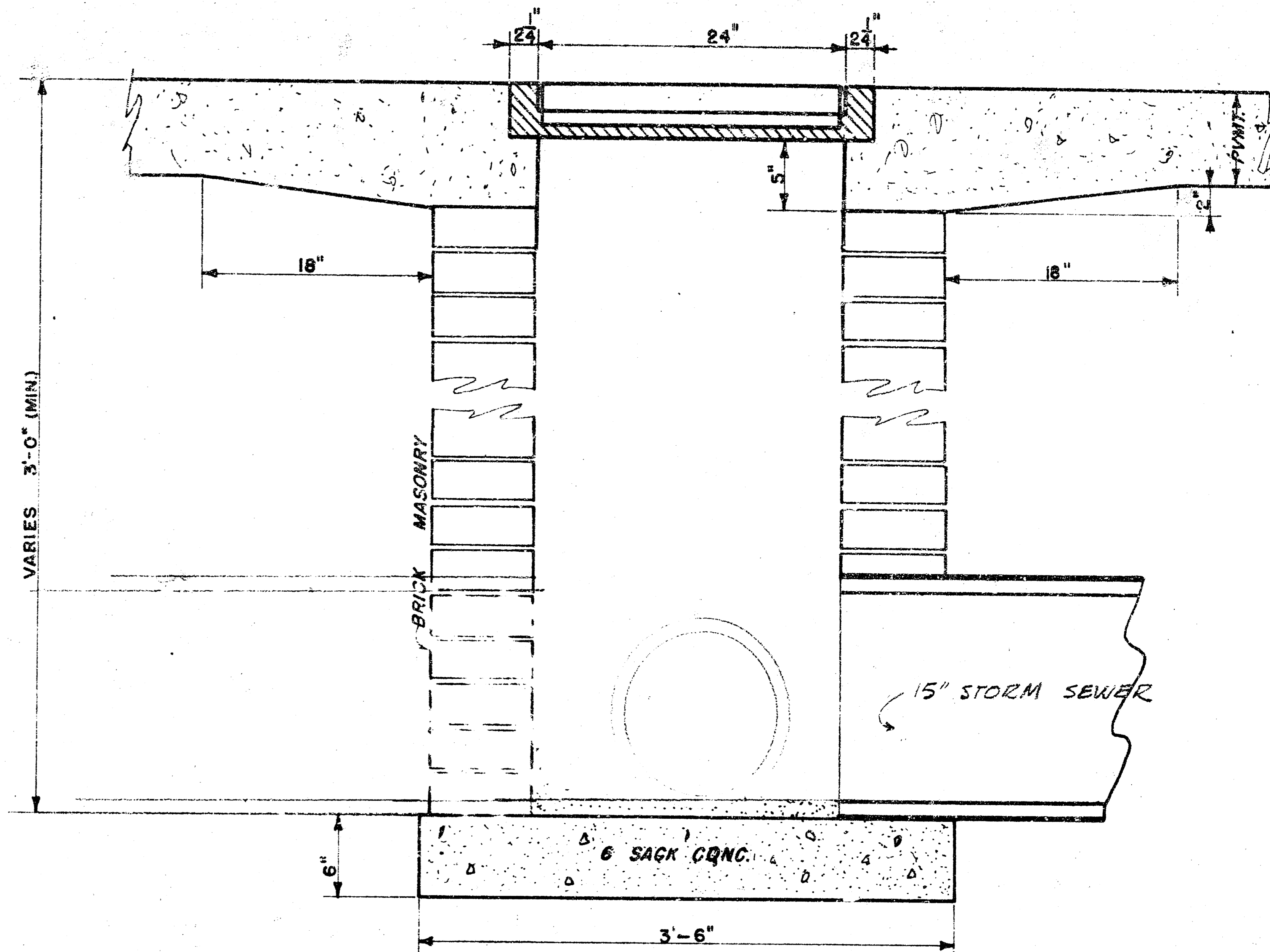
24"x24" Frame & Grate Detail



Double 24"x24" Frame Detail



98.2
+ 13.39
111.59 (City Datum)



DROP INLET DET
R.W. Linn City Engineer
City of Wichita, Kansas
Project: Courtyard Drainage - St. Hospital
Project No.