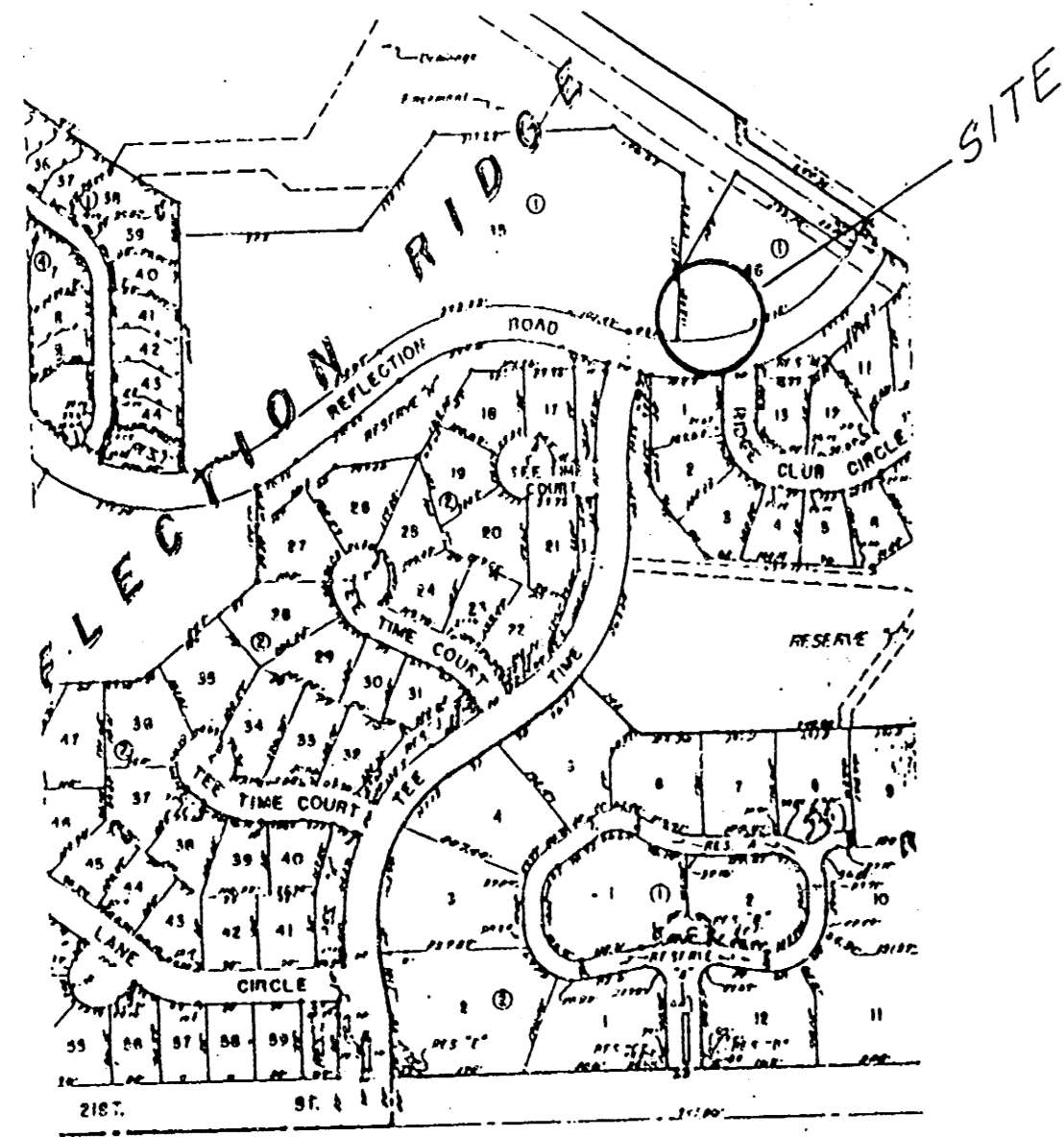
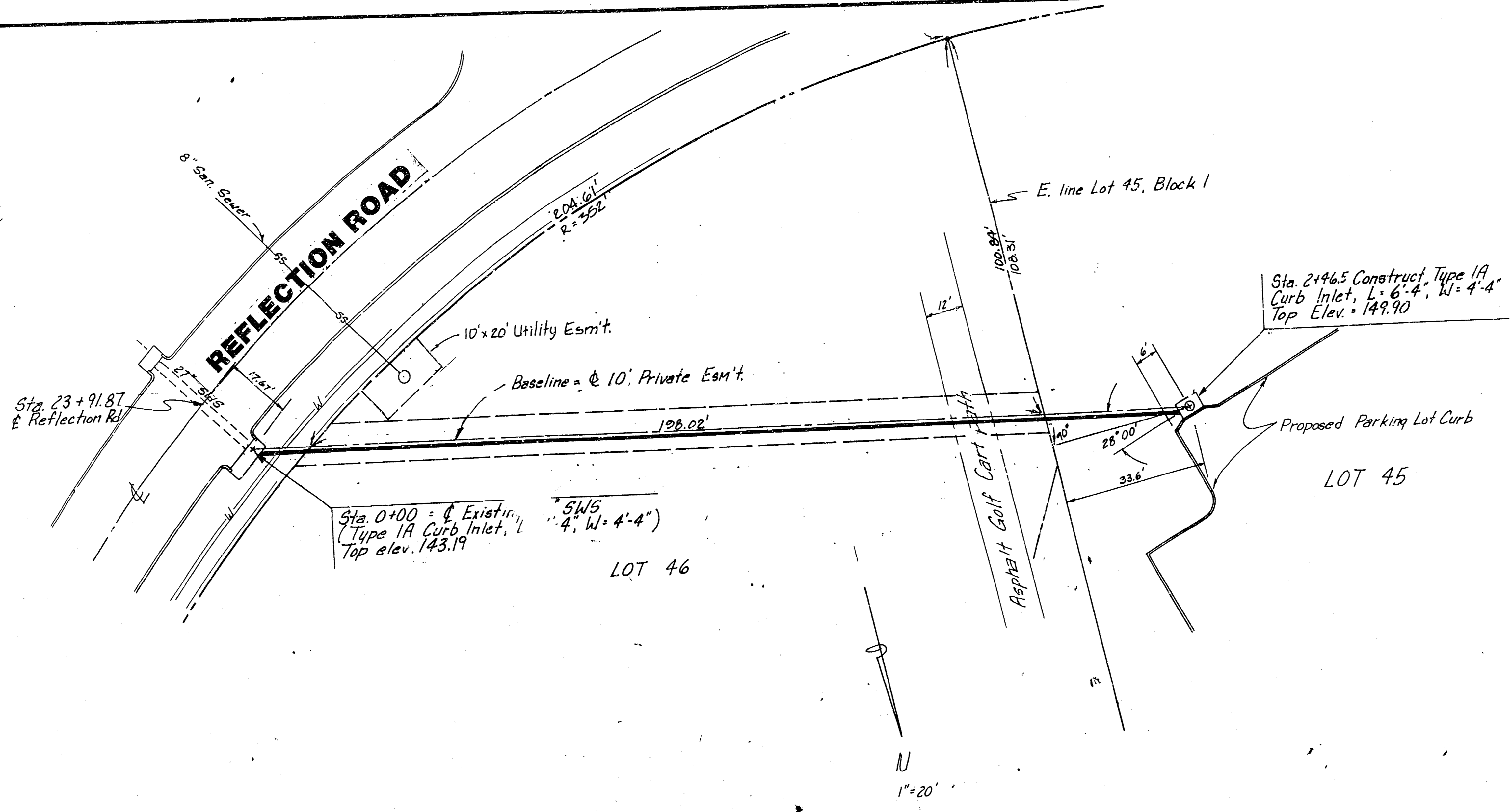


DATE	
BY	
PLAN	
NOTE BOOK	
No.	

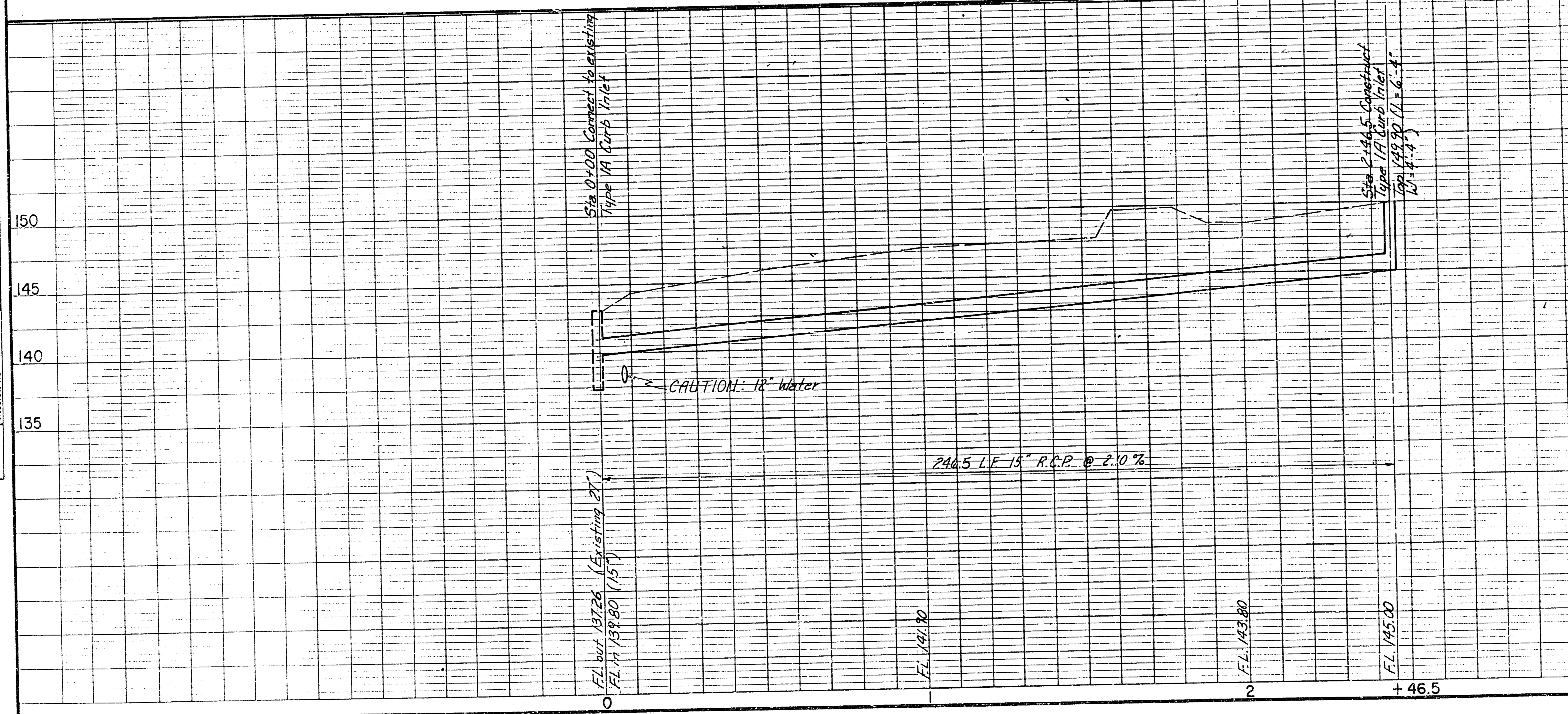


LOCATION MAP

Bench Mark:
Chiseled "D" Cut Top of Curb
West of inlet
Elev. = 143.15



DATE	
BY	
PROFILE	
NOTE BOOK	
No.	

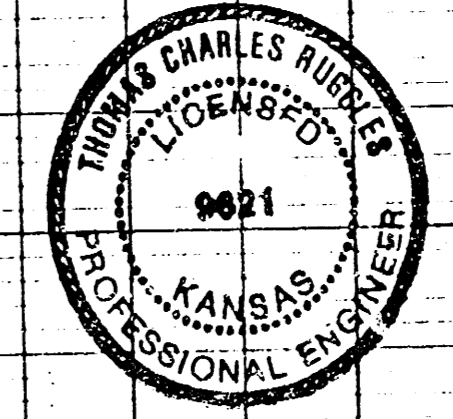


PROFILE SCALE
1" = 20' Horiz.
1" = 5' Vert.

APPROVED AS NOTED	
By CITY ENGINEER OF WICHITA	
Sanitary Sewers	
Storm Sewers	<i>2/1/89</i>
Driveway Approaches	
Water Mains	
Paving	

NOTE TO CONTRACTOR
INSPECTION AND TESTING FOR THIS PROJECT IS TO BE PROVIDED BY A LICENSED CONSULTING ENGINEERING FIRM UNDER CONTRACT WITH THE OWNER/DEVELOPER. SAID INSPECTION TO BE IN ACCORDANCE WITH THE CITY OF WICHITA STANDARD CONSTRUCTION ENGINEERING PRACTICES AND CERTIFIED BY A LICENSED PROFESSIONAL ENGINEER. NO WORK SHALL BE PERFORMED IN DEDICATED EASEMENTS OR PUBLIC RIGHT-OF-WAY BY THE CONTRACTOR WITHOUT SUCH INSPECTION NOR SHALL ANY WORK BE COMMENCED WITHOUT WRITTEN AUTHORIZATION BY THE CITY ENGINEER.

Revised easement 7-28-89



PRIVATE STORM WATER SEWER
REFLECTION RIDGE CLUBHOUSE
WICHITA, KANSAS
INDEX CODE: 220PPS 607853

DATE	7-6-89
BY	TCR
APPROVED	DSN
SCALE	1" = 20'

