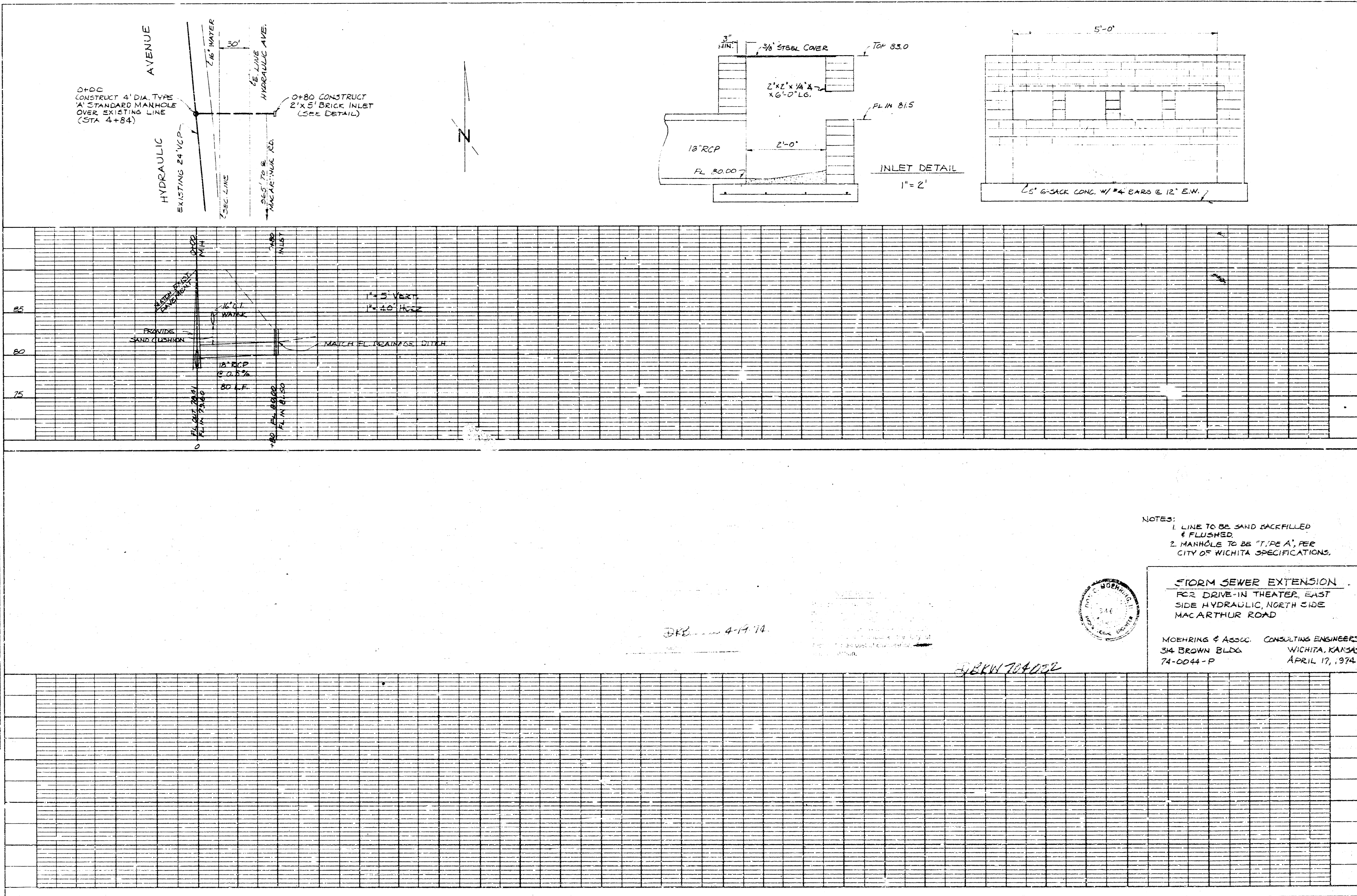


PLAN
 1" = 20'
 NORTH
 0' 0" = 0+00
 100' = 1+00
 200' = 2+00
 300' = 3+00
 400' = 4+00
 500' = 5+00
 600' = 6+00
 700' = 7+00
 800' = 8+00
 900' = 9+00
 1000' = 10+00

PROFILE
 1" = 2'
 10' = 10'
 20' = 20'
 30' = 30'
 40' = 40'
 50' = 50'
 60' = 60'
 70' = 70'
 80' = 80'
 90' = 90'
 100' = 100'



NOTES:
 1. LINE TO BE SAND BACKFILLED & FLUSHED.
 2. MANHOLE TO BE "TYPE A", PER CITY OF WICHITA SPECIFICATIONS.

STORM SEWER EXTENSION
 FOR DRIVE-IN THEATER, EAST SIDE HYDRAULIC, NORTH SIDE MACARTHUR ROAD

MOHRING & ASSOC. CONSULTING ENGINEERS
 314 BROWN BLDG. WICHITA, KANSAS
 74-0044-P APRIL 17, 1974

