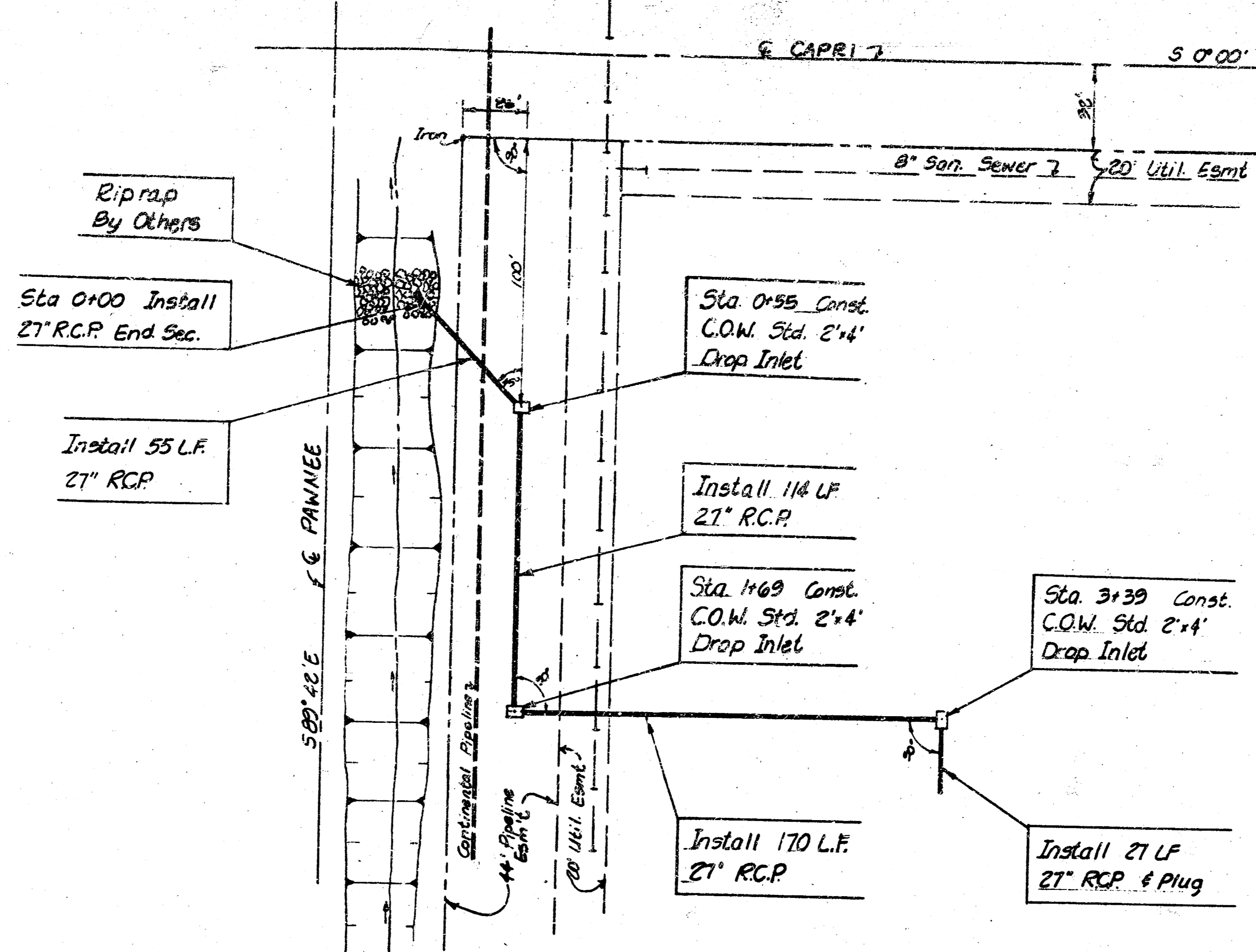


|                     |  |
|---------------------|--|
| DATE                |  |
| BY                  |  |
| APPROVED            |  |
| NOTED               |  |
| FILE OF WAY CHECKED |  |
| NO.                 |  |

|                     |  |
|---------------------|--|
| DATE                |  |
| BY                  |  |
| APPROVED            |  |
| NOTED               |  |
| FILE OF WAY CHECKED |  |
| NO.                 |  |

NOTE: Riprap to be installed at the same time storm drain is installed.



**NOTE TO CONTRACTOR**  
 This project will be constructed under the supervision of the CITY ENGINEER and conforming to the SPECIFICATIONS of the CITY OF WICHITA. THE CONTRACTOR will prepay the City of Wichita for all costs of inspection.

**CITY OF WICHITA**  
 APPROVED: \_\_\_\_\_  
 Engineering Div. \_\_\_\_\_

- GENERAL NOTES**
- ALL CONSTRUCTION AND MATERIALS TO COMPLY WITH CITY OF WICHITA SPECIFICATIONS AND STANDARDS.
  - SEWER LINES TO BE INSPECTED BY THE DEPARTMENT OF ENGINEERING.
  - THE BURIED UTILITIES AS SHOWN ON THE PLANS ARE APPROXIMATE ONLY. AT LEAST 48 HOURS PRIOR TO BEGINNING EXCAVATION (EXCLUDING WEEKENDS AND HOLIDAYS), THE CONTRACTOR SHALL CONTACT THE UTILITY LOCATION SERVICE "MAN-IT-DIG-IT" AT (316) 257-2889 TO REQUEST THE FOLLOWING UTILITY COMPANIES TO LOCATE ANY EXISTING LINES WITHIN THE PROJECT AREA: GAS SERVICE COMPANY, S.G. & E., SOUTH-WESTERN BELL TELEPHONE COMPANY, AND THE WICHITA WATER DEPARTMENT.
  - EXCESS EXCAVATED MATERIAL AND OTHER DEBRIS SHALL BE WASTED AS DIRECTED BY THE ENGINEER.
  - THE CONTRACTOR SHALL BE RESPONSIBLE FOR PRESERVING PROPERTY IRONS. THE CONTRACTOR SHALL BE REQUIRED TO RE-ESTABLISH ANY PROPERTY IRONS WHICH ARE DAMAGED OR DESTROYED BY HIS CONSTRUCTION OPERATIONS. SUCH IRONS SHALL BE RE-ESTABLISHED BY A LICENSED LAND SURVEYOR OR A LICENSED PROFESSIONAL ENGINEER IN ACCORDANCE WITH STATE LAWS.
  - ALL ELEVATIONS SHOWN ARE CITY OF WICHITA DATUM. (USCS-1187.4-CITY DATUM)
  - Contractor shall contact Continental Pipeline Co. 1 week prior to excavation. Continental's representative must be present during work.  
 Contact: Mr. Ron Green  
 Continental Pipeline Co.  
 8001 Oak Knoll Road  
 Wichita, Kansas  
 Phone (316) 601-2081

Bench Mark: Rock Road & Pawnee, east.  
 City of Wichita Std. B.M. disc. 62' East & 53' north of centerline both. (1973) Elev. = 188.250

**SPEC**  
 Plan: 1"=40' Profile: H 1"=40' V 1"=5'

CITY PROJECT NO. 448-76-245-80000-000-000-000  
 OAK KNOLL CONDOMINIUMS  
 TRADITION HOMES, INC.  
 LOT 1, BLOCK 1 OAK KNOLL ADDN.  
**STORM DRAIN IMPROVEMENTS - PL. I**

