

- GENERAL NOTES**
1. Refer to plumbing drawings for exact location and elevation of roof drains. Site Storm Water Sump to connect to roof drain system or provide temporary plug.
 2. Refer to Sheet SA-1 for coordinate baseline information.
 3. Refer to Site Survey for Bench Mark and complete existing topographic information.
 4. All Storm Sumps shown on this sheet to be Reinforced Concrete Pipe.
 5. Contractor to contact Continental Pipeline Company prior to any grading work within pipeline easement.

APPROVED AS NOTED
 By CITY ENGINEER OF WICHITA
 Sanitary Sewers
 Storm Sumps
 Driveway Approaches

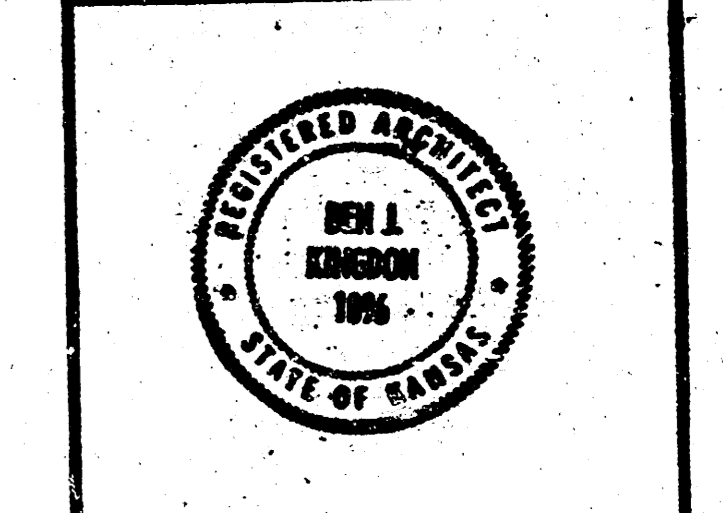
NOTE TO CONTRACTOR
 This project will be constructed under the supervision of the CITY ENGINEER and conforming to the SPECIFICATIONS of the CITY OF WICHITA. The CONTRACTOR will pay the City of Wichita for all costs of plan review, inspection and testing per contract.

PRINTS ISSUED		
DATE	PERSON	NO.
11-15-85	FOR BUILDING PERMIT	10

REVISIONS		
DATE	ITEM	NO.
11-15-85	FOR STORM SEWER	1



LAW/KINGDOM, INC.
 ARCHITECTS & ENGINEERS
 848 BROADWAY, WICHITA, KANSAS 67203
 Phone (316) 268-2330 Copyright © 1984



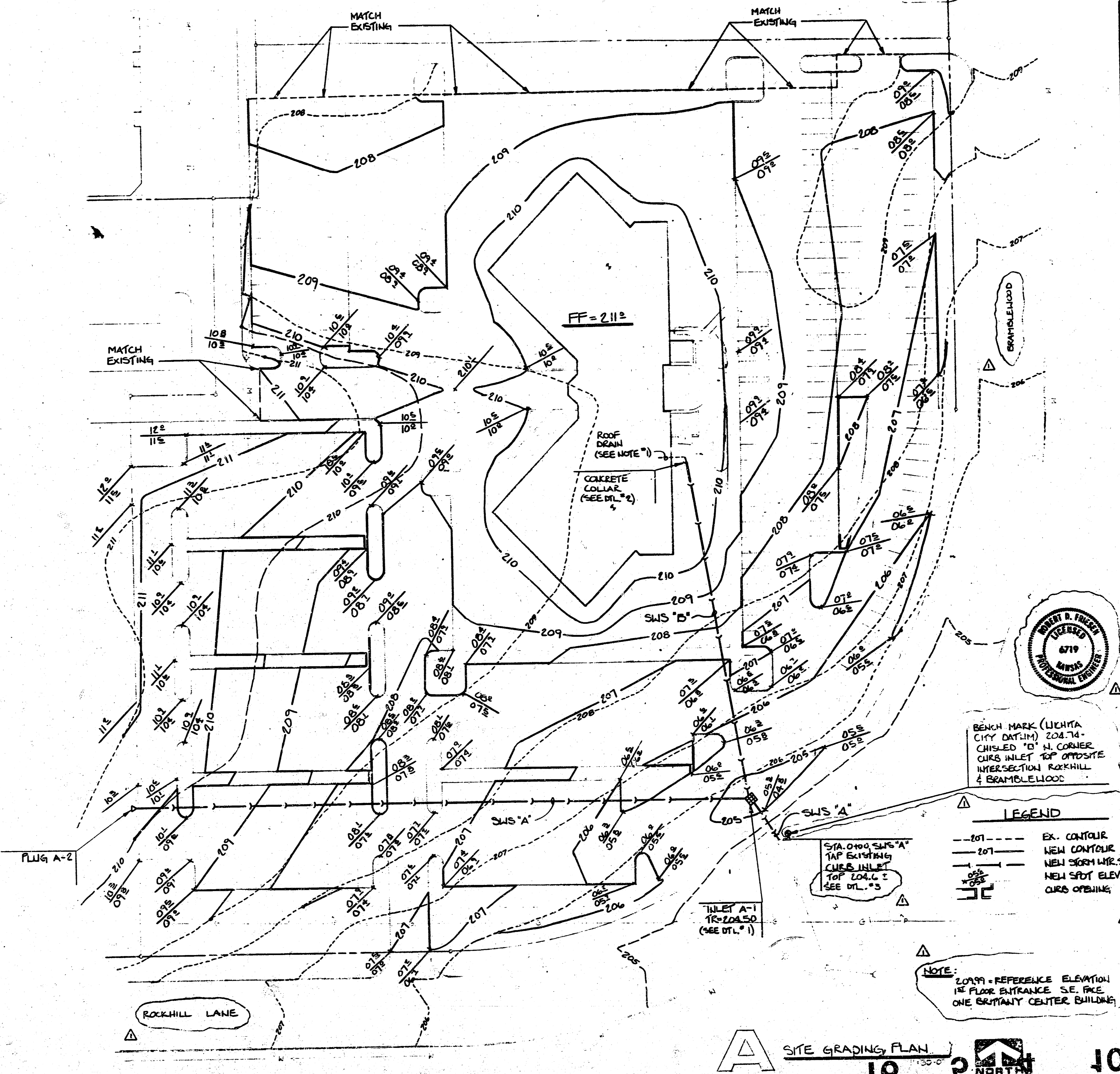
DRAWN	CHECKED
EWV	

RELATED DRAWINGS	
SHELL	
DETAILS	
STRUCTURE	
MECHANICAL	
ELECTRICAL	
OTHER	

SEQUENCE NUMBER	OF	SHEETS

TWO BRITANNY PLACE
 WICHITA, KANSAS
 PROJECT NUMBER 7515

SITE GRADING PLAN
 SHEET NUMBER
SG1
 OF 1 SHEETS



LEGEND

--- 207 ---	EX. CONTOUR
--- 207 ---	NEW CONTOUR
---	NEW STORM LINE
---	NEW SPOT ELEV.
---	CURB OPENING

A SITE GRADING PLAN
 10

FILMED FROM THE BEST AVAILABLE COPY