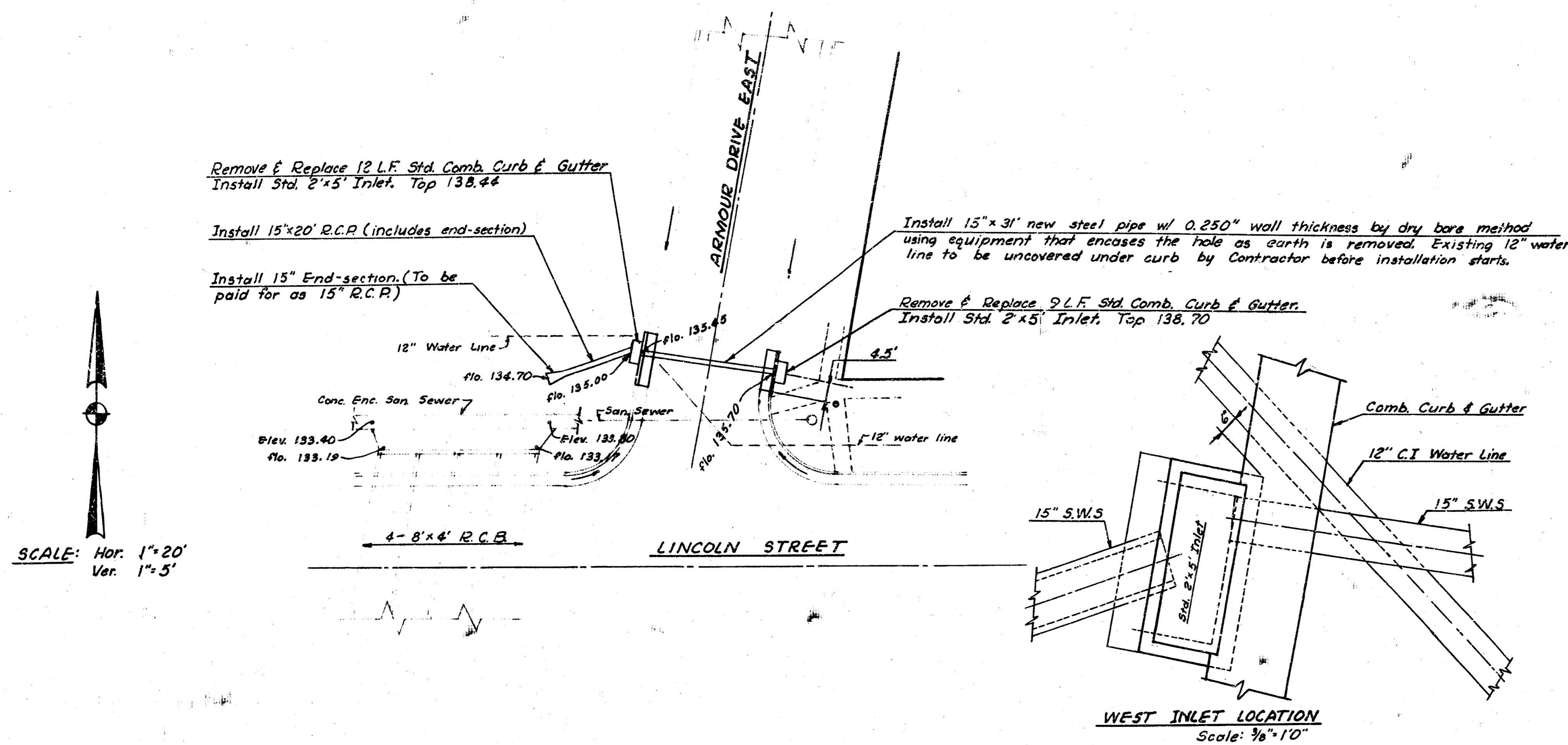


B.M. 138.87 Std. on N.E. Cor.  
 Culvert at Lincoln & Armour



SCALE: Hor. 1"=20'  
 Ver. 1"=5'

Remove & Replace 12 L.F. Std. Comb. Curb & Gutter  
 Install Std. 2'x5' Inlet, Top 138.46

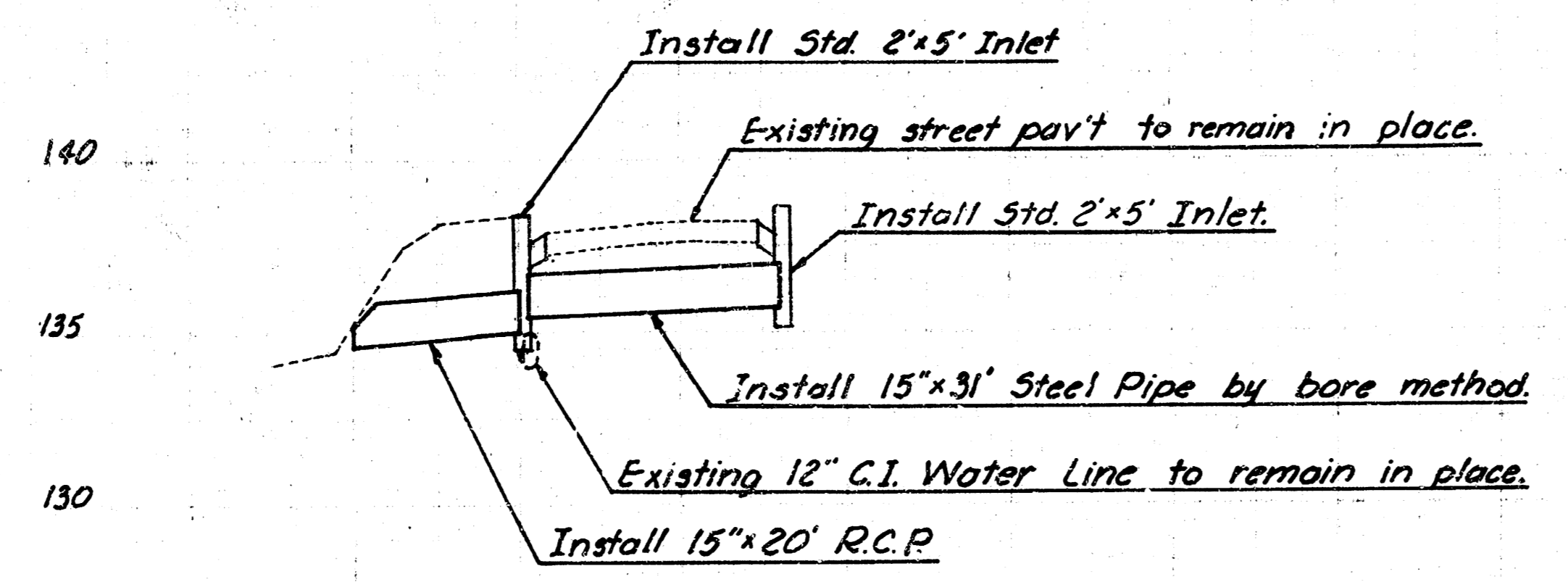
Install 15"x20' R.C.P. (includes end-section)

Install 15' End-section. (To be paid for as 15' R.C.P.)

Install 15"x31' new steel pipe w/ 0.250" wall thickness by dry bore method using equipment that encases the hole as earth is removed. Existing 12" water line to be uncovered under curb by Contractor before installation starts.

Remove & Replace 9 L.F. Std. Comb. Curb & Gutter  
 Install Std. 2'x5' Inlet, Top 138.70

WEST INLET LOCATION  
 Scale: 3/8"=10'



Install Std. 2'x5' Inlet

Existing street pav't to remain in place.

Install Std. 2'x5' Inlet.

Install 15'x31' Steel Pipe by bore method.

Existing 12" C.I. Water Line to remain in place.

Install 15'x20' R.C.P.

134.70  
 135.00  
 135.46  
 135.70



INTERSECTION DRAINAGE  
 EAST ARMOUR DR. & LINCOLN  
 R.W. LINN, CITY ENGINEER  
 CITY OF WICHITA, KANSAS  
 DATE: NOV. 1978  
 PROJECT NO. BHK5 501-139



11 - Engr  
 1 - Water