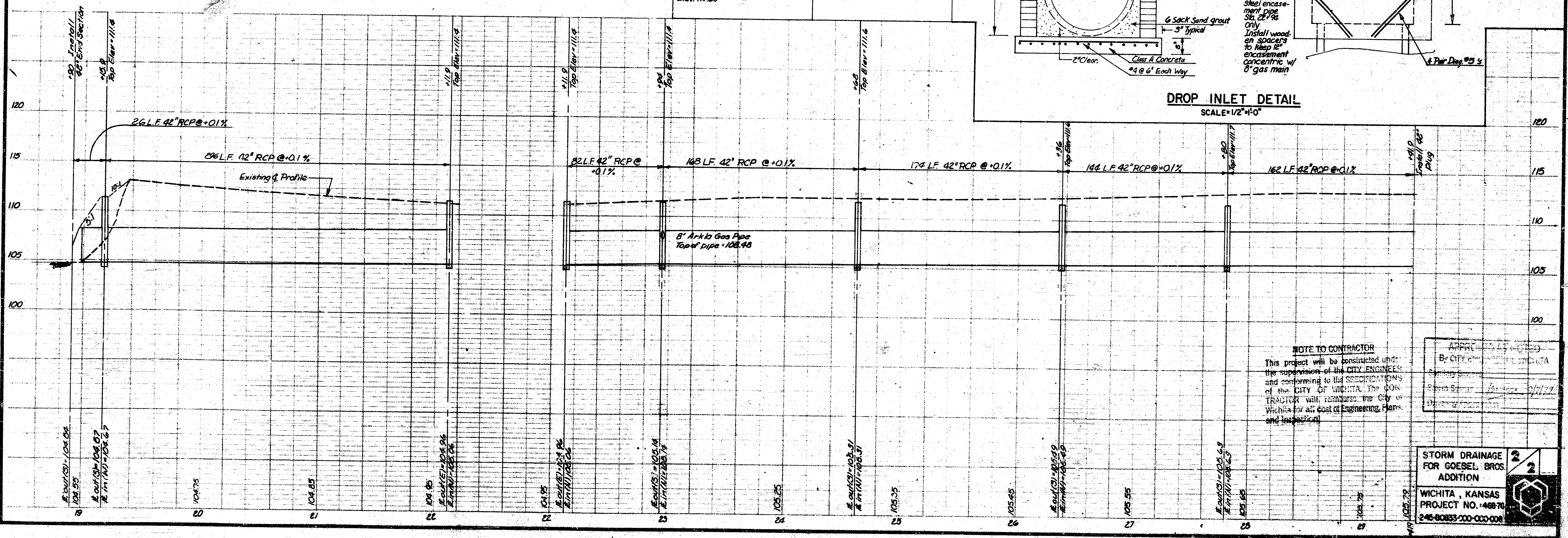
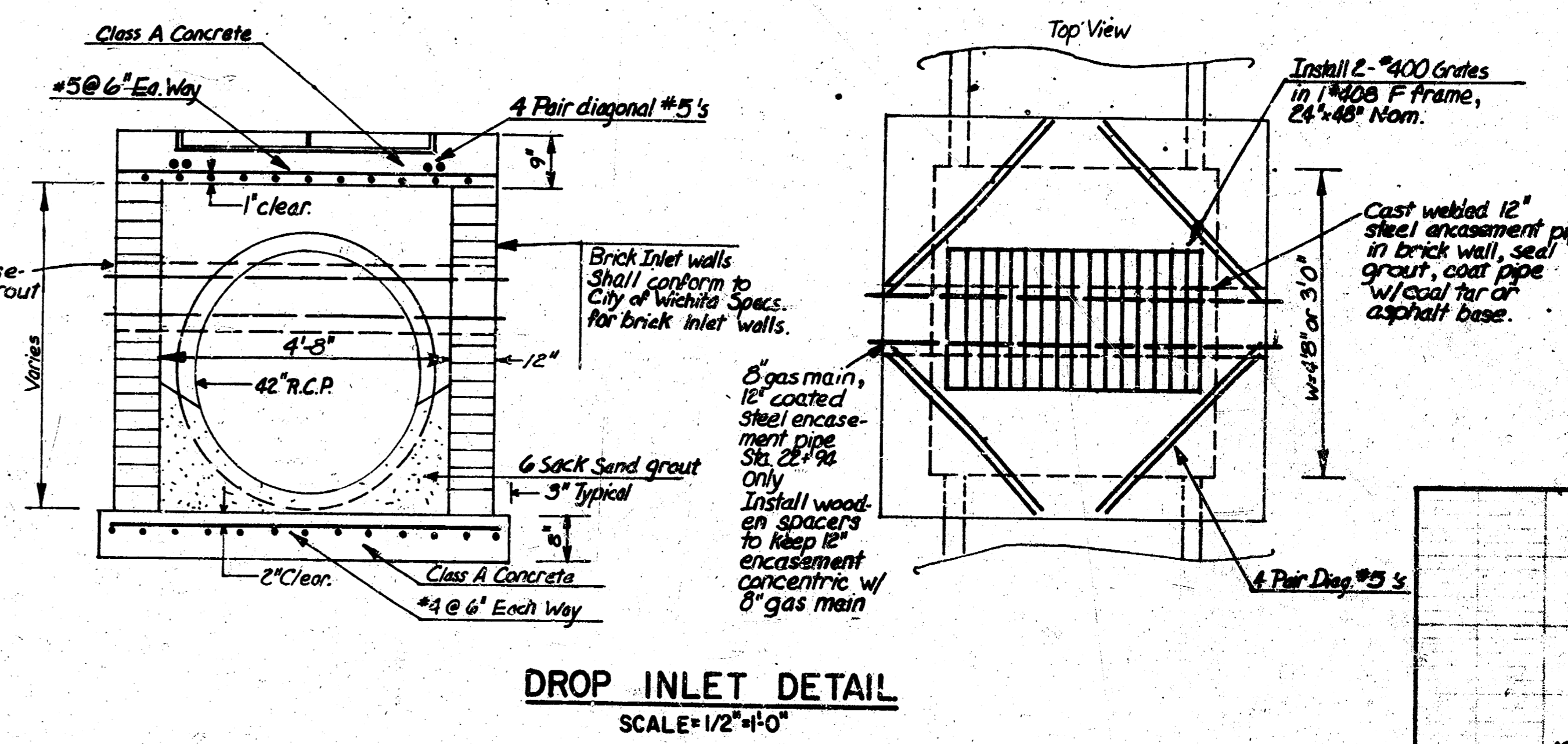
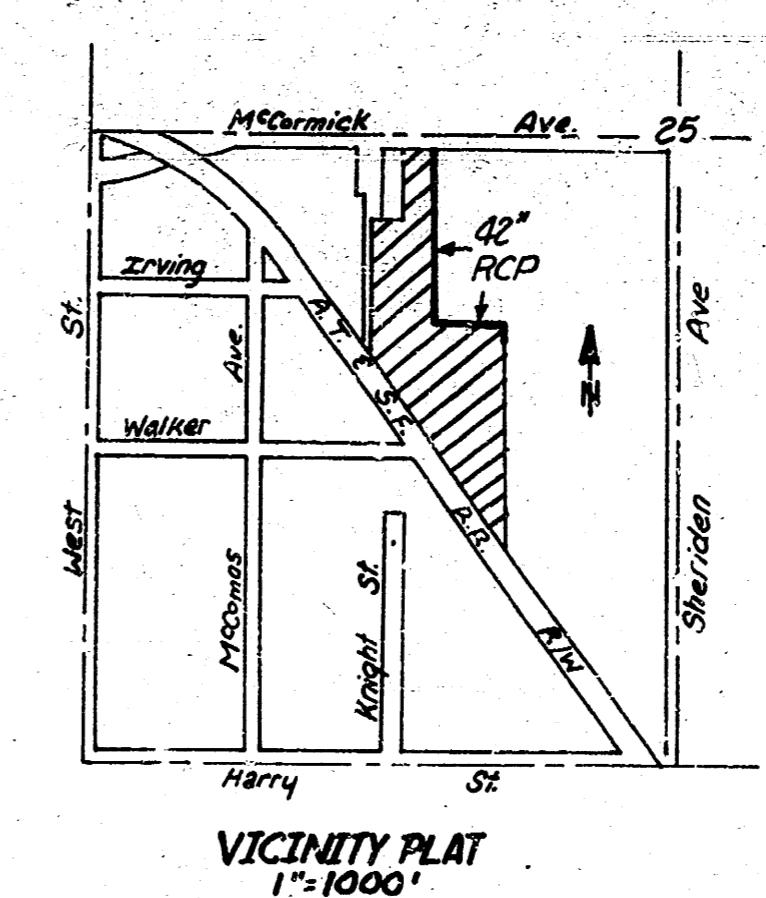


**WARNING**  
 100 PSI gas main  
 Prior to excavation around gas main, Contractor shall contact Hershey Runion, Arkla Gas Co., 942-8336



**NOTE TO CONTRACTOR**  
 This project will be constructed under the supervision of the CITY ENGINEER and conforming to the SPECIFICATIONS of the CITY OF WICHITA. The CONTRACTOR will reimburse the City of Wichita for all cost of Engineering, Plans, and Inspection.

APPROVED BY (SEAL)  
 By CITY ENGINEER  
 Date: 11/17/77

**STORM DRAINAGE FOR GOEBEL BROS. ADDITION**  
 WICHITA, KANSAS  
 PROJECT NO. 46876  
 245-80833-000-000-000