

prints issued

revisions

date drawn



JEFF KREBBER ASSOCIATES, INC. architecture • planning

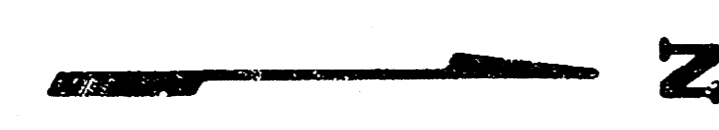
DATE: 8/19/82

PRIVATE STORM SEWER EXTENSION TO SERVE LOTS 2 & 3, BLOCK 5, FARMINGTON SQUARE 2ND ADDITION WICHITA, KANSAS PROJECT NO. 468-76-245-60000-000-008

sheet title

sheet

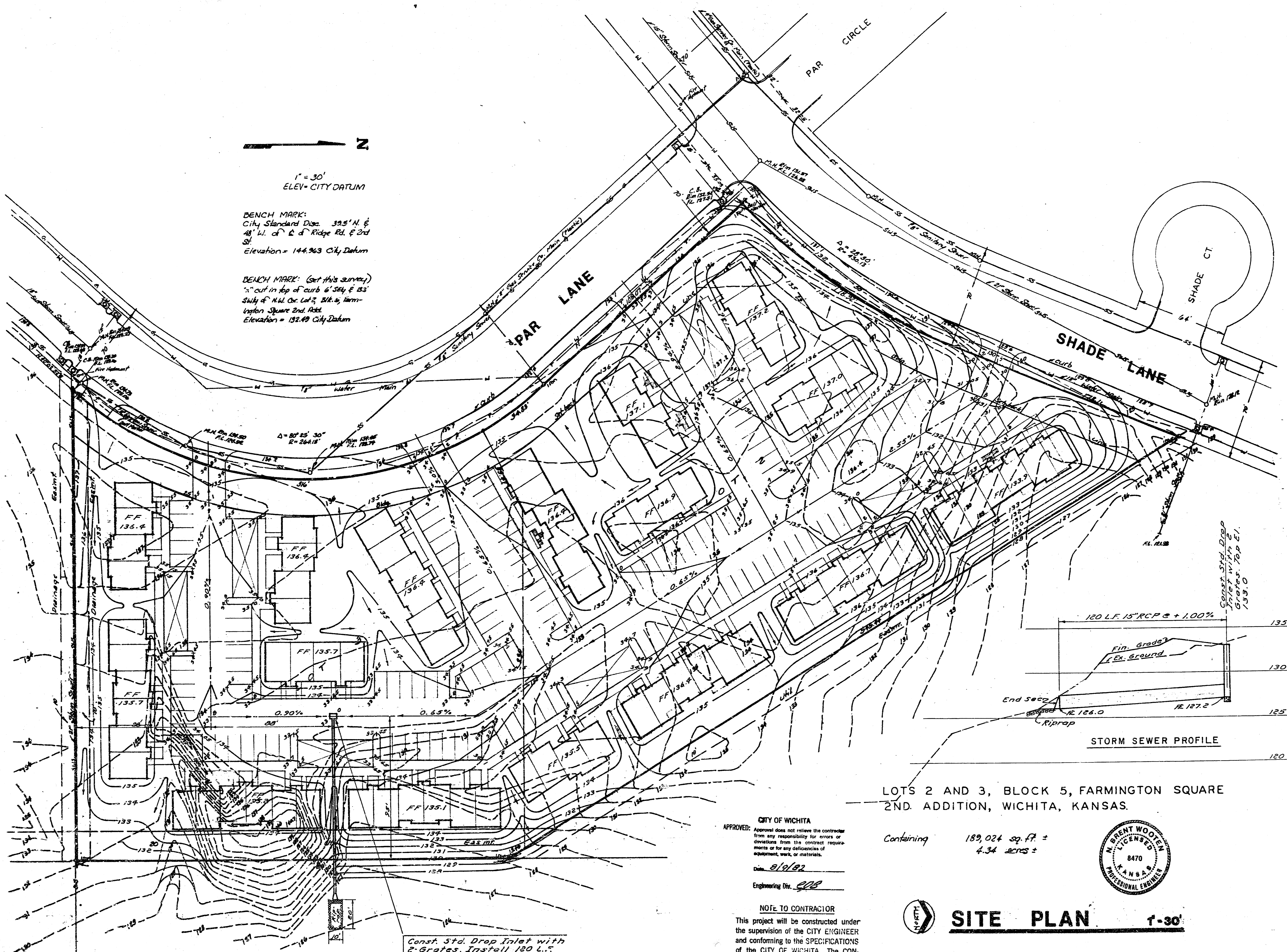
of 1/1



1" = 30'
ELEV. CITY DATUM

BENCH MARK:
City Standard Disc. 39.5' N. &
48' W. of E. & Ridge Rd. & 2nd St.
Elevation = 144.963 City Datum

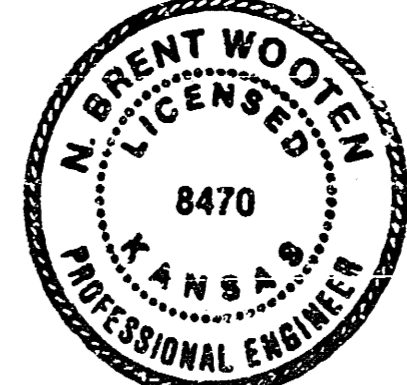
BENCH MARK: (Set this survey)
1" cut in top of curb 6' S.W. of E.S.
Study of N.W. Cor. Lot 3, Bk. 5, Farmington Square 2nd Add.
Elevation = 152.49 City Datum



LOTS 2 AND 3, BLOCK 5, FARMINGTON SQUARE 2ND ADDITION, WICHITA, KANSAS.

Containing 189,024 sq. ft. ±
4.34 acres ±

CITY OF WICHITA
APPROVED: [Signature]
Date: 8/19/82
Engineering Div. [Signature]



NOTE TO CONTRACTOR
This project will be constructed under the supervision of the CITY ENGINEER and conforming to the SPECIFICATIONS of the CITY OF WICHITA. THE CONTRACTOR will prepay the City of Wichita for all costs of inspection.

SITE PLAN 1" = 30'

BAUGHMAN COMPANY, P.A.
ENGINEERS & ARCHITECTS
1001 N. W. 10th St., Wichita, Kansas 67202

Const. Std. Drop Inlet with 2' Grates. Install 130 L.F. 15" RCP with End Section Outlet & 22 S.V. Riprap