
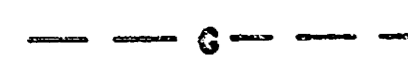
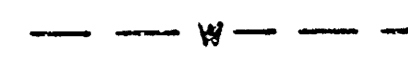



LEGEND

-  REMOVE & REPLACE ASPHALT PAVEMENT
-  G EX. GAS LINE
-  W EX. WATER LINE
-  SWS EX. STORM WTR. SEWER

NOTES:

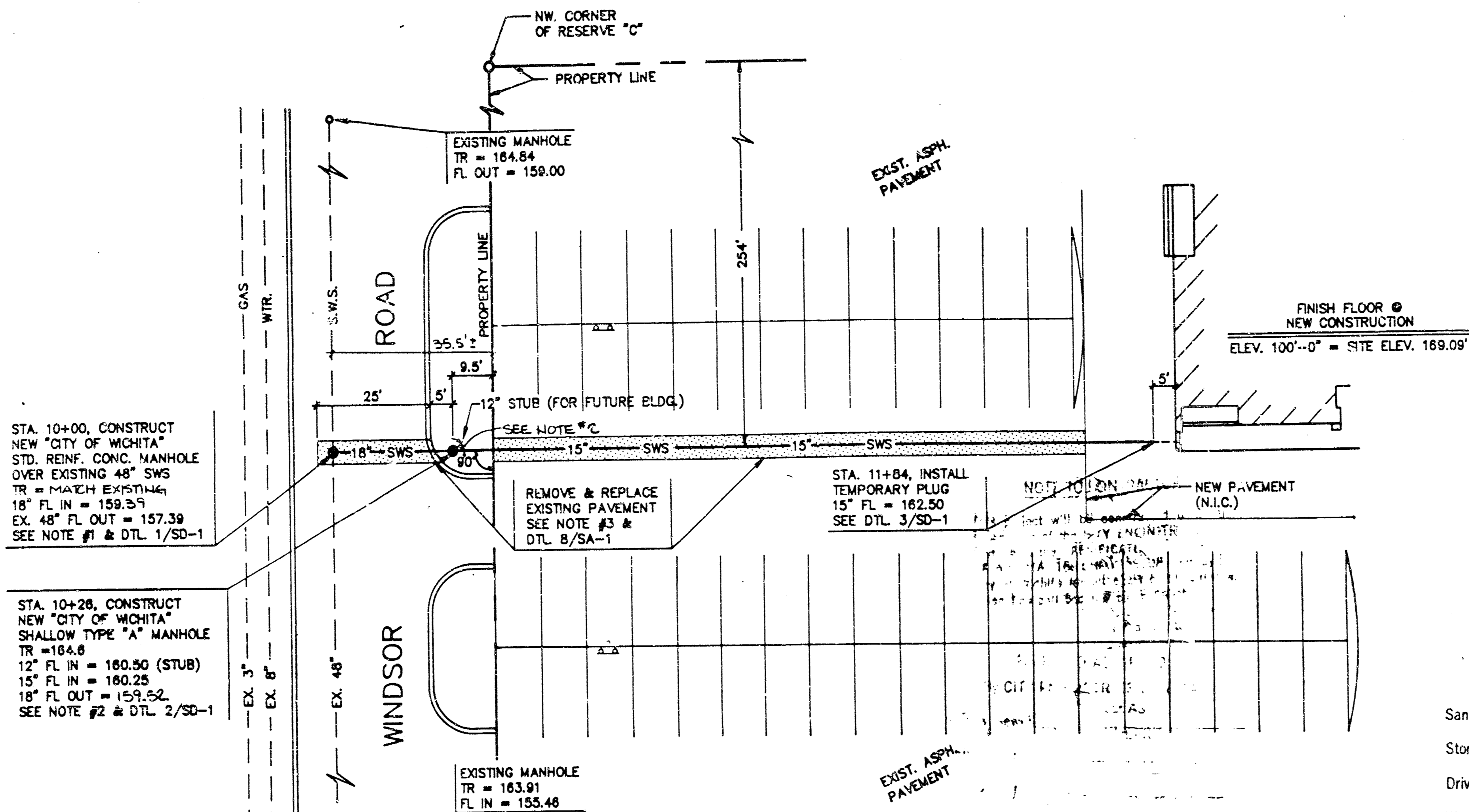
1. CONTRACTOR TO VERIFY LOCATION AND ELEVATION OF EXISTING STORM WATER SEWER LINE AND OTHER EXISTING UTILITY LINES PRIOR TO CONSTRUCTION OF NEW STORM WATER SEWER LINE.
2. CONTRACTOR TO CONTACT PROJECT ARCHITECT PRIOR TO INSTALLATION OF STUB FOR FUTURE STORM WATER SEWER LINE. REFER TO "CITY OF WICHITA" DETAILS AND SPEC. FOR PLUGGING OF STUB.
3. CONTRACTOR TO COORDINATE WITH "CITY OF WICHITA" TO REMOVE AND REPLACE EXISTING PAVEMENT WITHIN WINDSOR STREET RIGHT-OF-WAY.
4. ALL CONSTRUCTION AND MATERIALS TO BE IN ACCORDANCE WITH "CITY OF WICHITA" STANDARDS AND SPECIFICATIONS.

STA. 10+00, CONSTRUCT NEW "CITY OF WICHITA" STD. REINF. CONC. MANHOLE OVER EXISTING 48" SWS TR = 164.84 FL OUT = 159.00 SEE NOTE #1 & DTL. 1/SD-1

STA. 10+26, CONSTRUCT NEW "CITY OF WICHITA" SHALLOW TYPE "A" MANHOLE TR = 164.8 FL IN = 160.90 (STUB) 15" FL IN = 160.25 18" FL OUT = 159.52 SEE NOTE #2 & DTL. 2/SD-1

A PLAN AND PROFILE

STORM WATER SEWER LINE TO SERVE MAGDALEN SCHOOL FACILITY IN RESERVE "C" OF SOUTHEAST ADDITION TO THE VILLAGE, AN ADDITION TO WICHITA, SEDGWICK COUNTY, KANSAS 468-76-245-30001 000-300-104

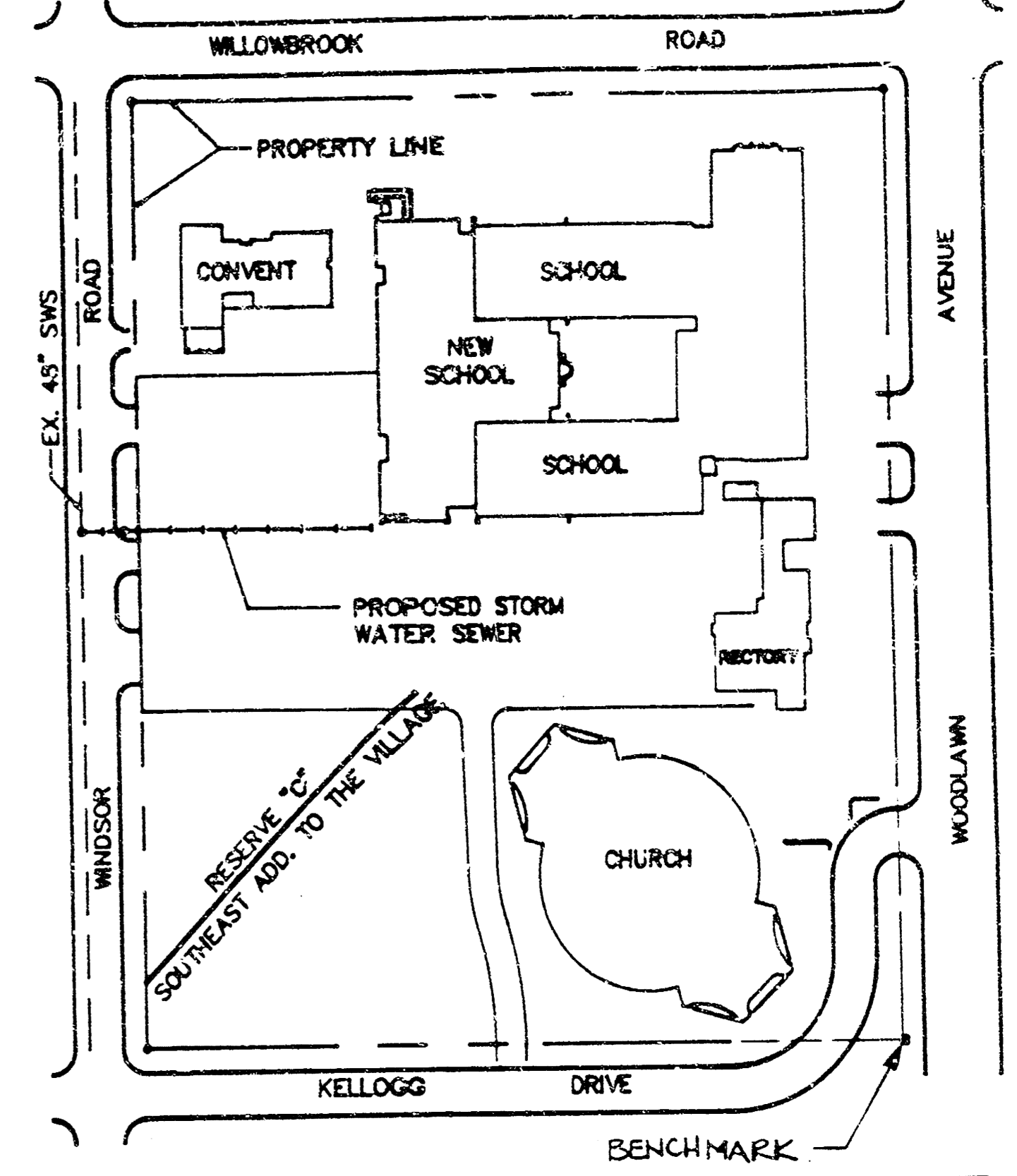


NOTE TO CONTRACTOR

This project will be constructed under the supervision of the CITY ENGINEER and conforming to the SPECIFICATIONS of the CITY OF WICHITA. The CONTRACTOR will pay the City of Wichita for all costs of plan review, inspection and booking per contract.

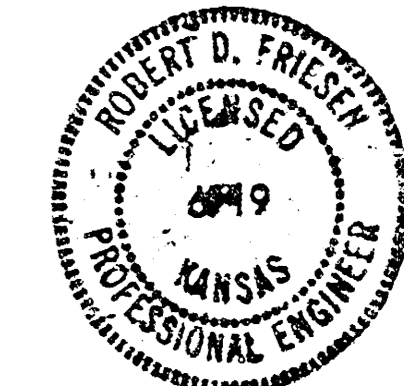
APPROVED AS NOTED
By CITY ENGINEER OF WICHITA

- Sanitary Sewers _____
- Storm Sewers URH 9/22/07
- Driveway Approaches _____
- Water Mains _____
- Paving _____



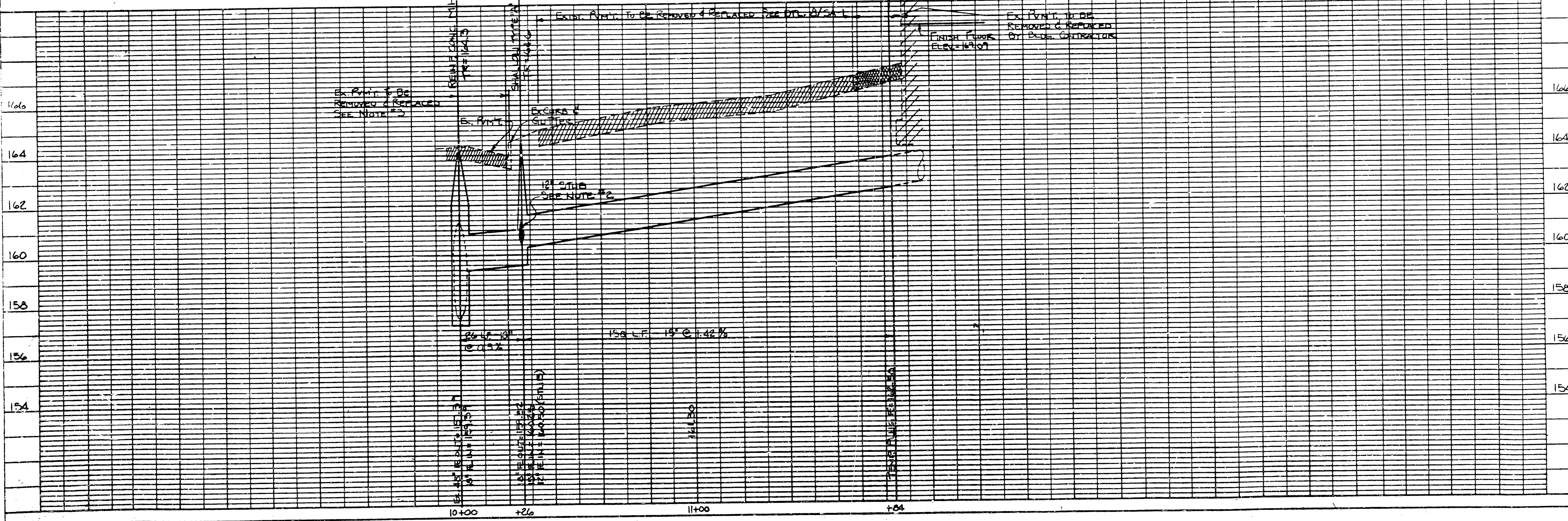
B VICINITY MAP
1" = 100'

BENCHMARK:
ELEVATION = 163.83
"D" OUT IN SIDEWALK @ S.E. CORNER OF RESERVE "C", SOUTHEAST ADDITION TO THE VILLAGE, AN ADDITION TO WICHITA, SEDGWICK COUNTY, KANSAS.



REVISIONS	
DATE	ITEM

LAW / KINGDON, INC.
ARCHITECTS & ENGINEERS
348 REVEREN, WICHITA, KANSAS
Phone (316) 268-0000 Copyright © 2007

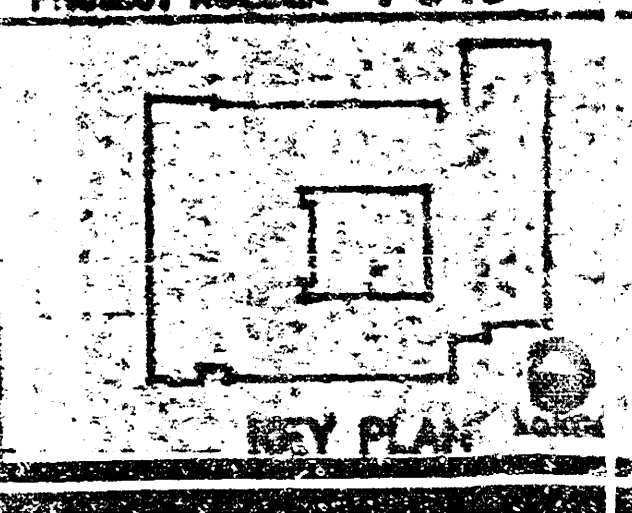


DRAIN	CHECKED
DPJ	EDF

RELATED DRAWINGS	
SHELL	
DETAILS	
STRUCTURE	
MECHANICAL	
ELECTRICAL	
OTHER	

SEQUENCE NUMBER	
7	OF 44

ADDITION AND RENOVATION
THE CHURCH OF THE MAGDALEN
SCHOOL FACILITY - WICHITA, KAN
PROJECT NUMBER 7619



468-76-245-30001-000
STORM WATER SEWER PLAN AND PROFILE
SHEET TITLE

SHEET NUMBER
SU-1

FILMED FROM THE BEST AVAILABLE COPY....