

Big ARKANSAS RIVER

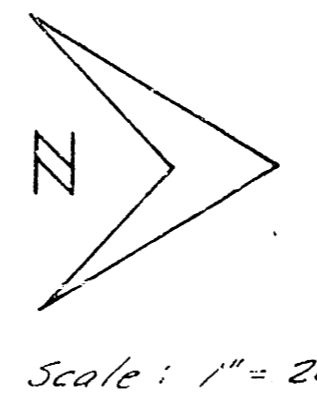
0+07 Begin line
Encase 10' with 6 sack paving
mix 6" thick. Rip up outfall.

1+82 Construct brick
manhole.

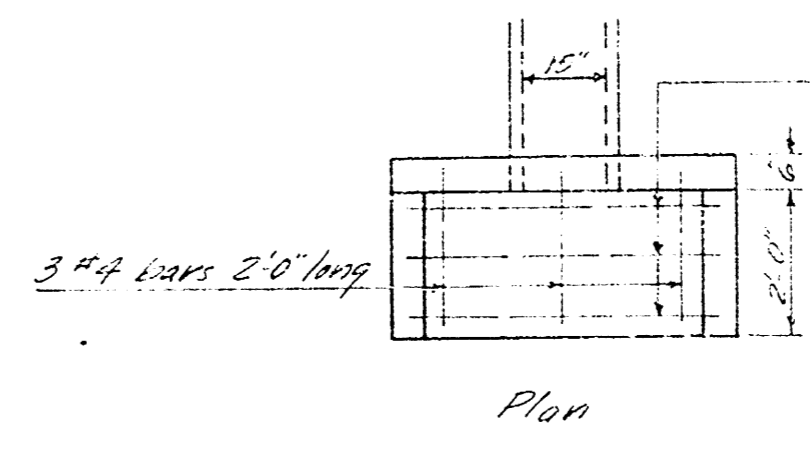
2+51.8 Construct
brick manhole.

B.M. 124.34 R.R. Spike S.S. H.L.P.
S.E. 18th & Woodrow Ch.

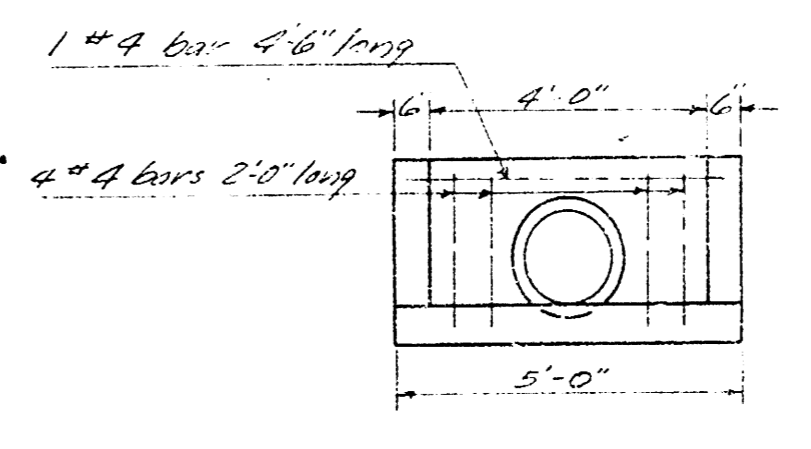
2



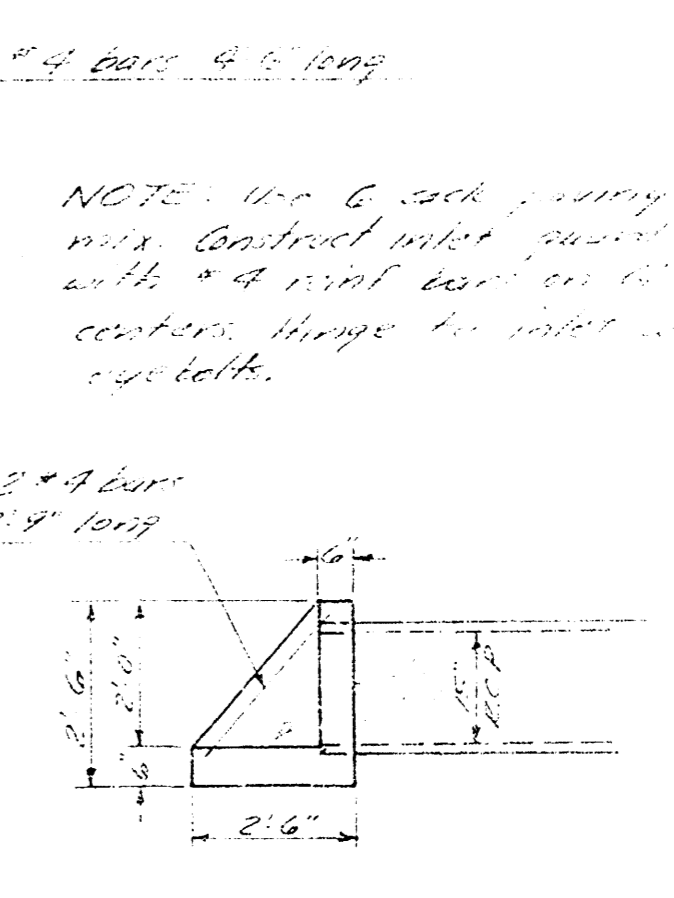
Scale: 1" = 20'



Plan



Elevation



Elevation

NOTE: Use 6 sack paving
mix. Backfill pipe joints
with 4" sand bars on all
exposed flange for water
tightness.

Inlet Detail
Scale: 3/8" = 1'-0"

3+67 End line.
Construct riser.

Push backfill

0+0
File out 1/15/58

1+0
1/16/58

2+0
File out 1/15/58
File in 1/16/58

3+0
File out 1/15/58
File in 1/16/58

4+0
1/17/58

5+0
File out 1/16/58

PRIVATE STORM WATER SEWER
COOK'S RIVER RANCH ADDITION
CITY OF WICHITA, KANSAS
B. E. SMITH - CITY ENGINEER
JULY, 1958 PRIVATE JOB