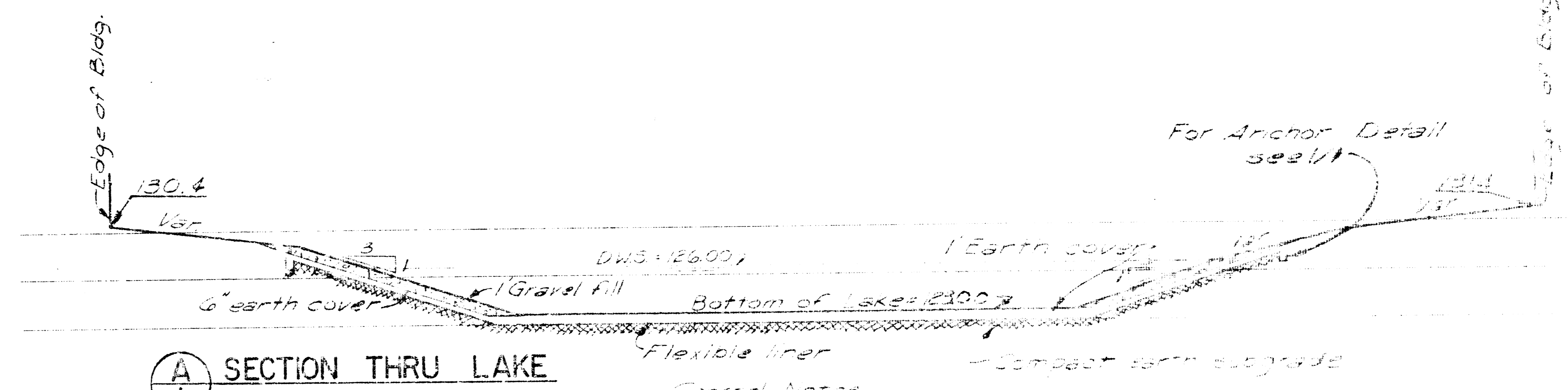


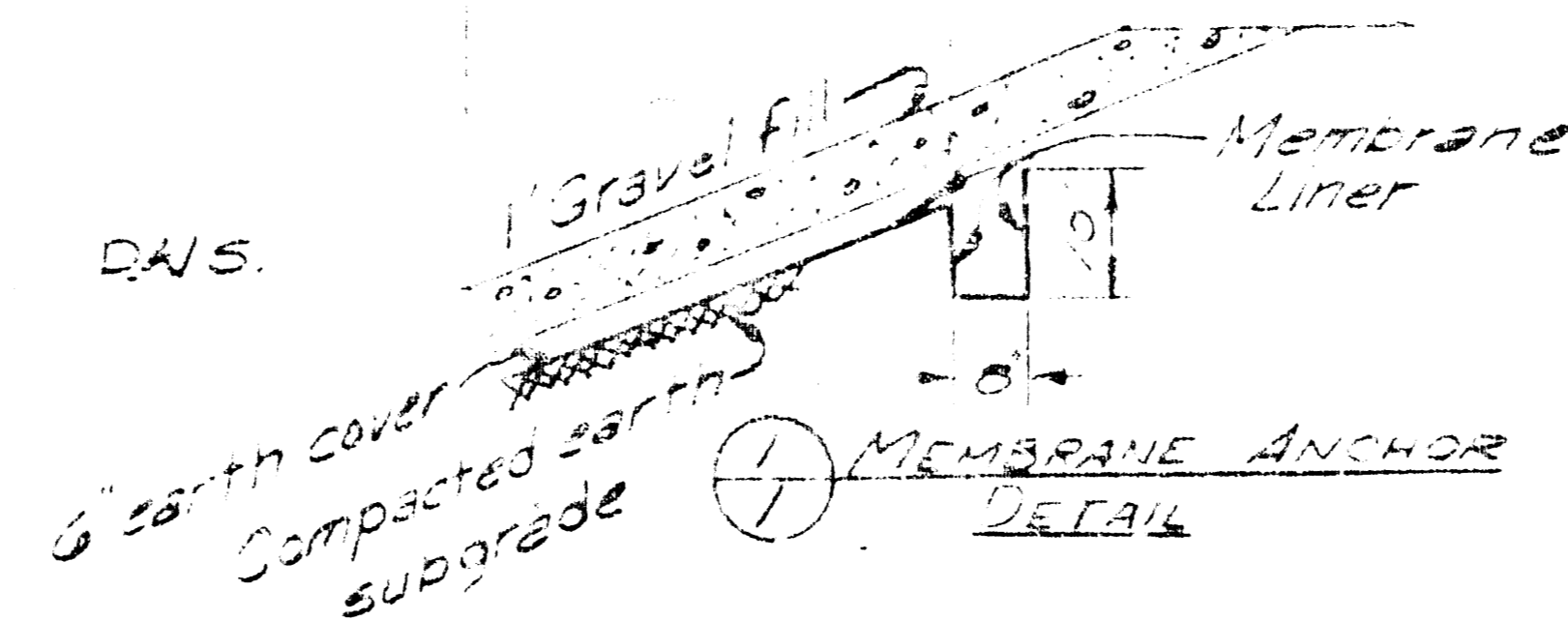
SCALE 1" = 20'



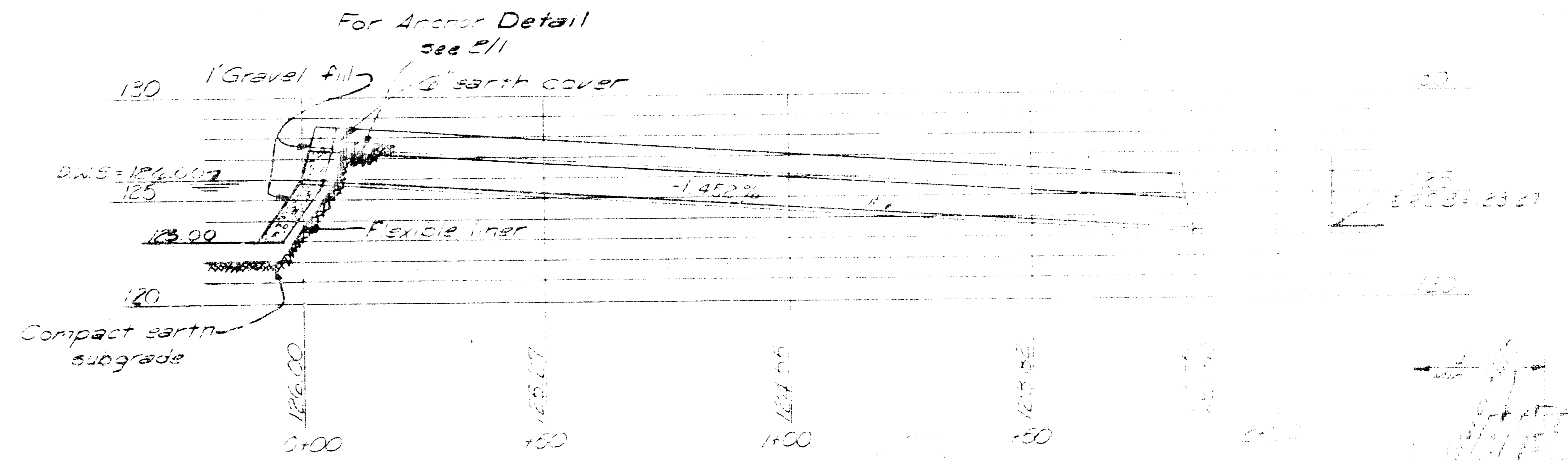
(A) SECTION THRU LAKE

General Notes

Flexible membrane shall be a vinyl (PVC) liner 30 mils thick, 120 lbs/sq. ft. A 6 inch minimum lap joint with sufficient cold-applied vinyl to vinyl bonding solvent shall be used to seal factory fabricated panels of PVC together in field. The membrane liner shall be joined to the 18" RCP with a vinyl to concrete adhesive. A bentonite sealer may be used in lieu of the membrane liner. Bentonite shall be applied at a rate of 1 lbs/sq. ft. and shall be raked or dished into place a minimum of 4 inches in depth.

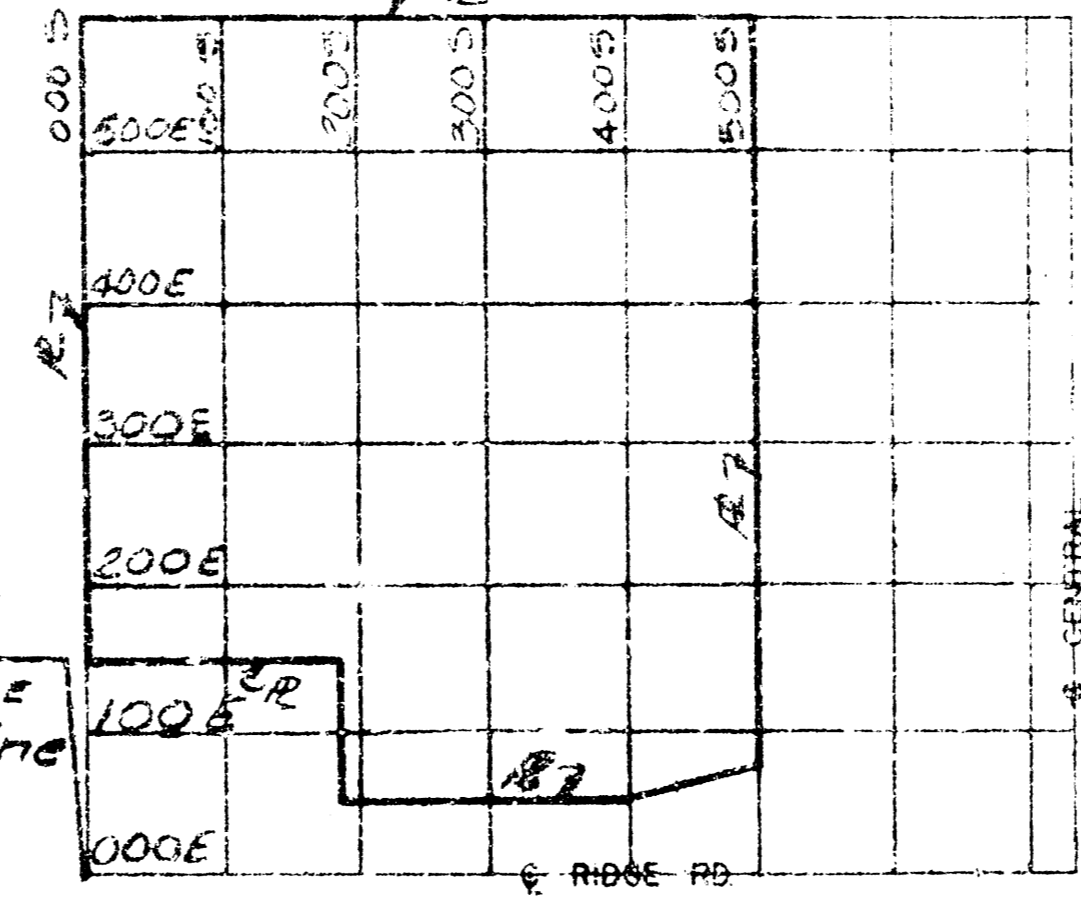


(I) MEMBRANE ANCHOR DETAIL

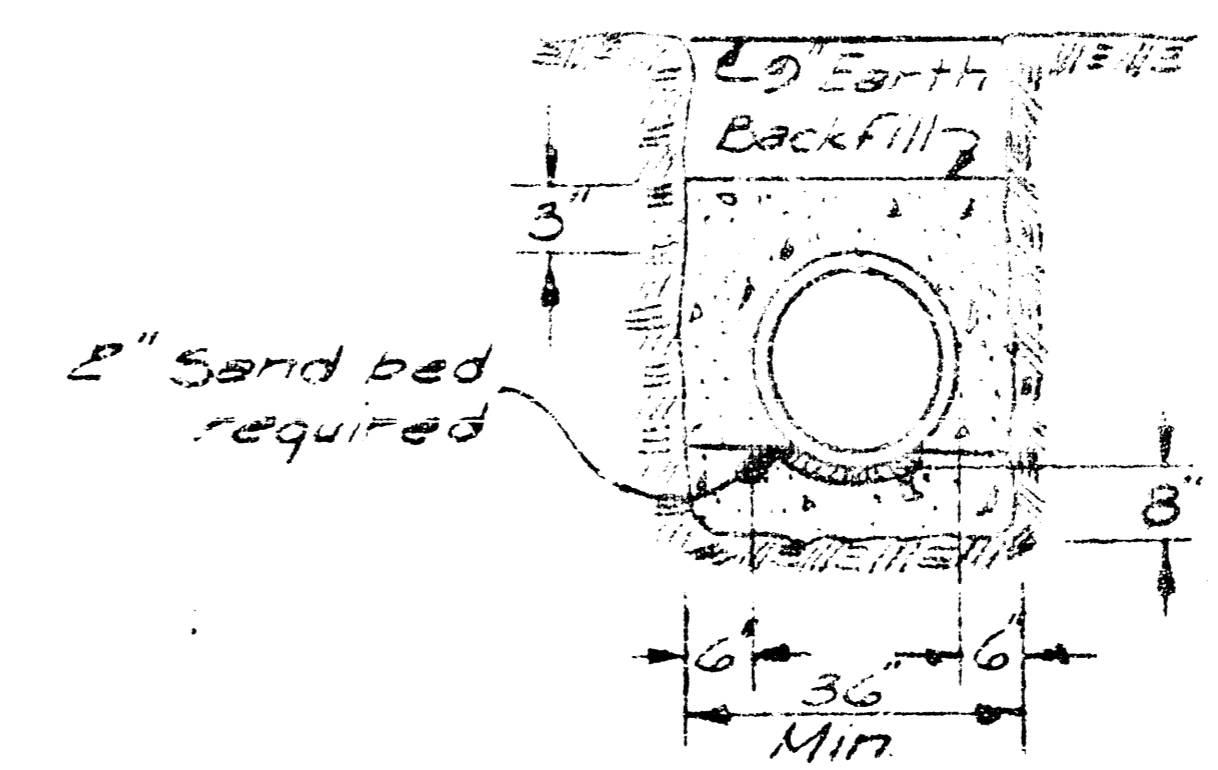


(B) SECTION THRU R.C.P.

NOTE: 00054
000E & Ridge
Rd. & N. Prop Line
extended



VICINITY MAP



(C) 18" RCP CONCRETE ENCASEMENT
PIPE: Class IV RCP
CONCRETE: fc' = 3000 psi.

Seal membrane liner to 18" RCP to insure water tightness

BOTTENBERG
Apts Sewer
Private Project
PROFESSIONAL ENGINEERING CONSULTANTS
215 N. 1ST ST.
MILWAUKEE, WIS. 53233