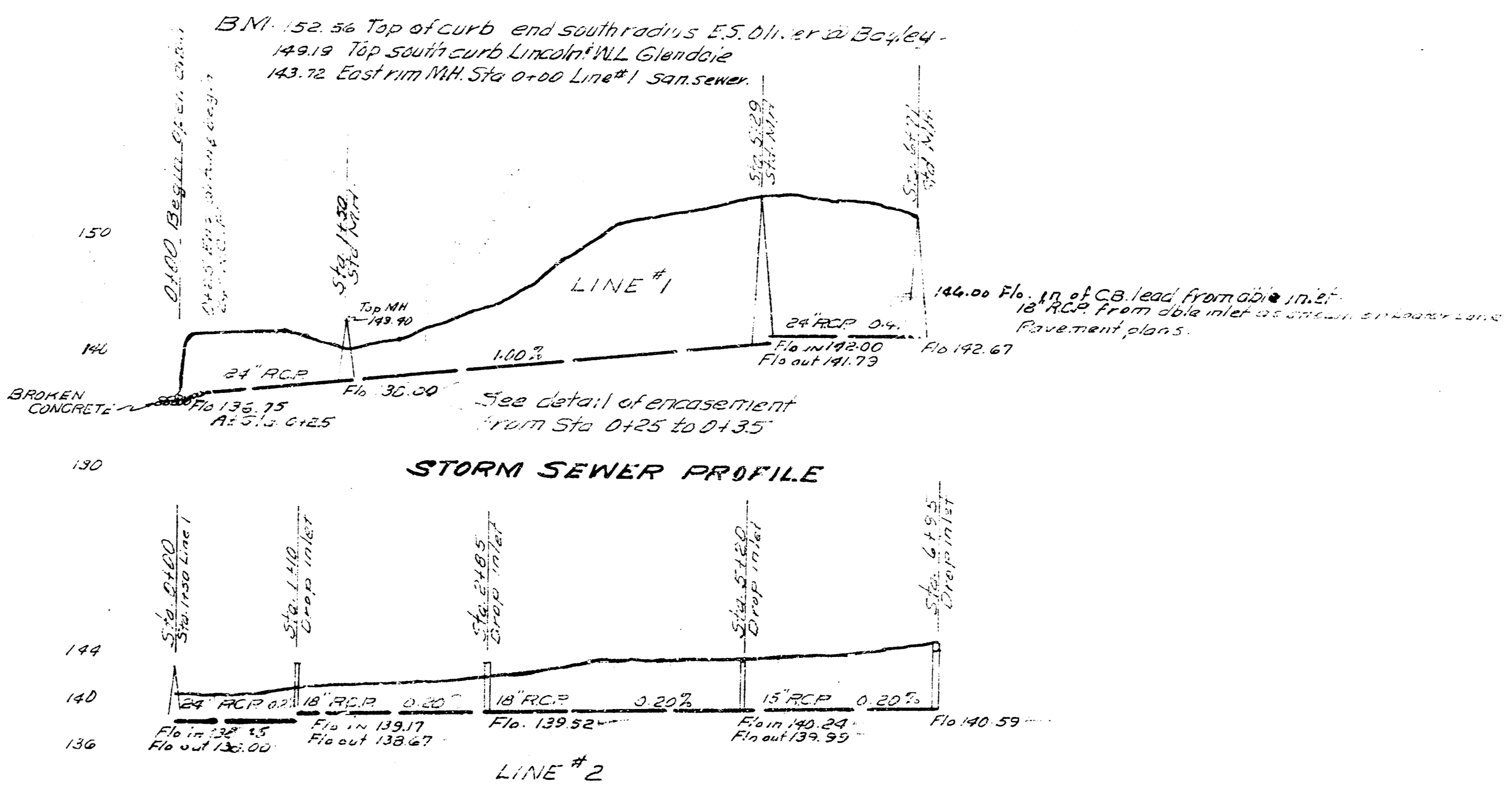
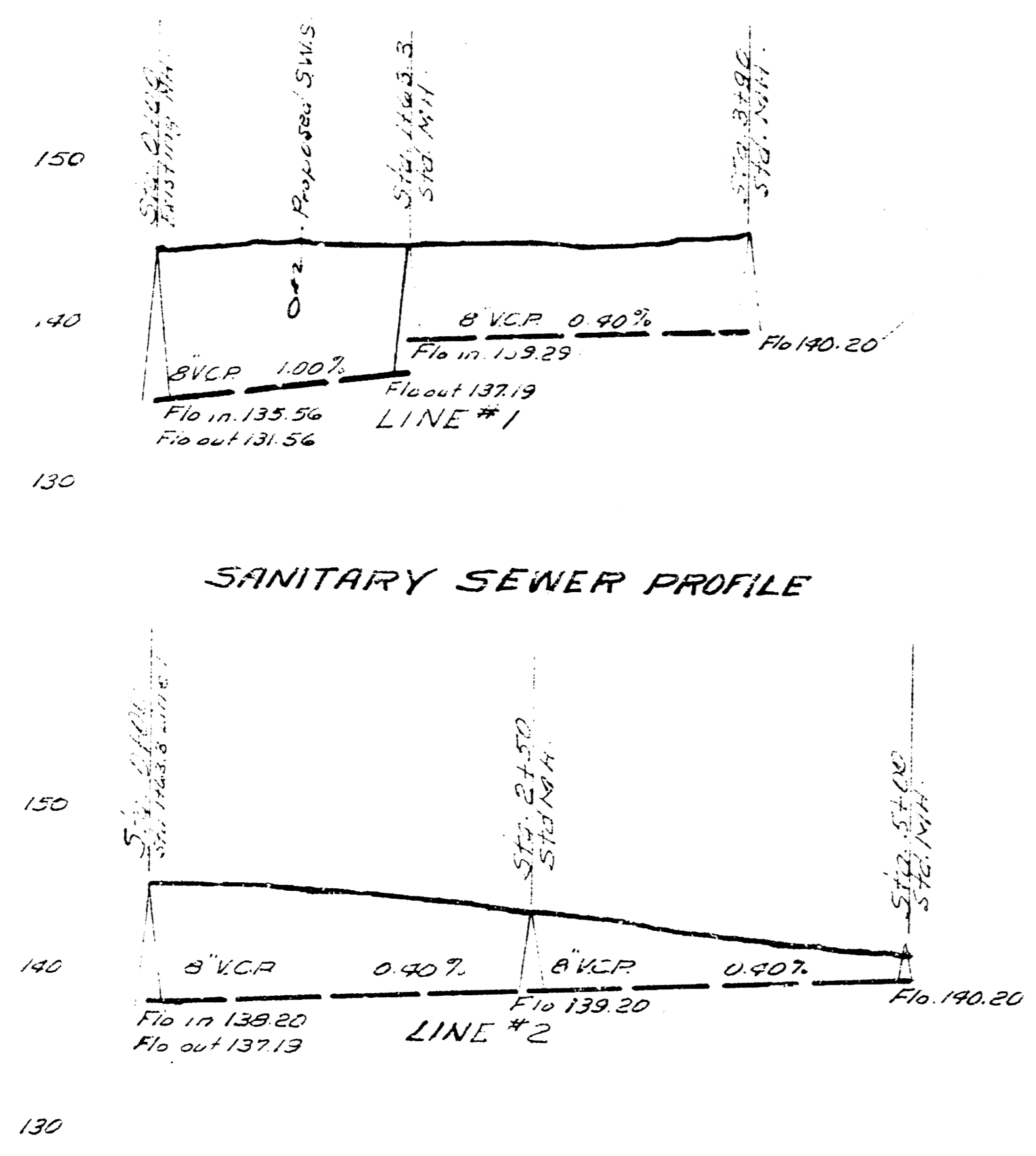
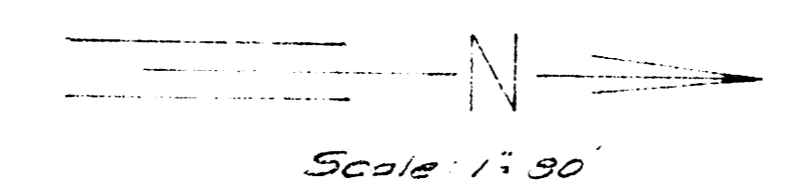
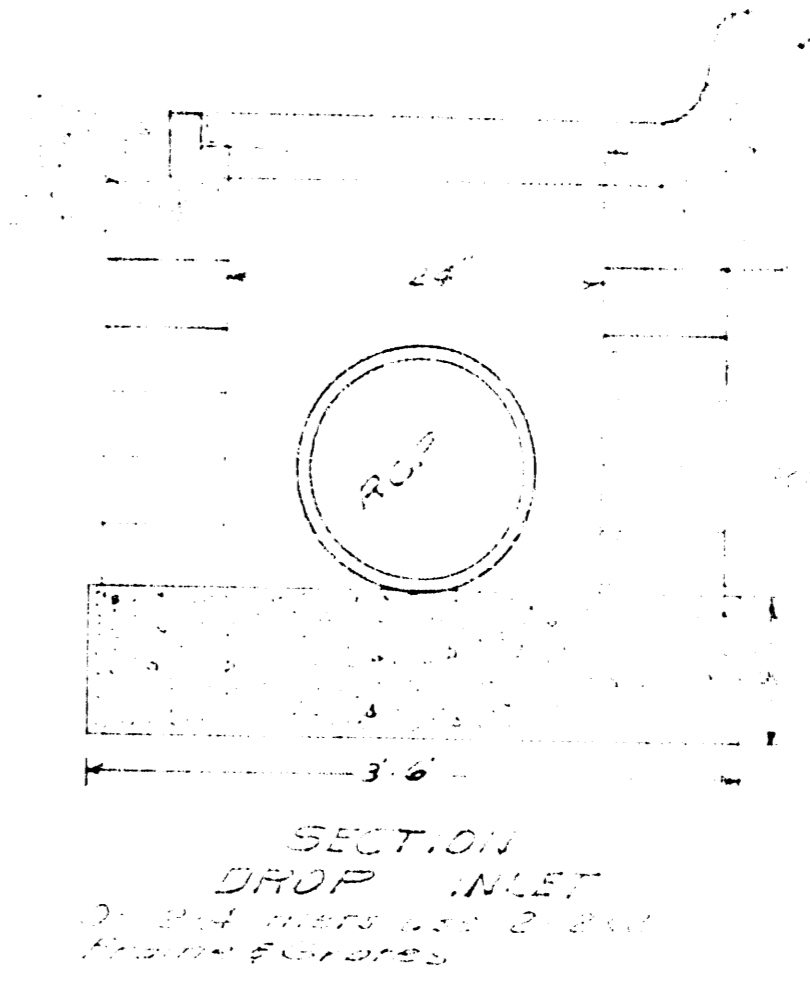
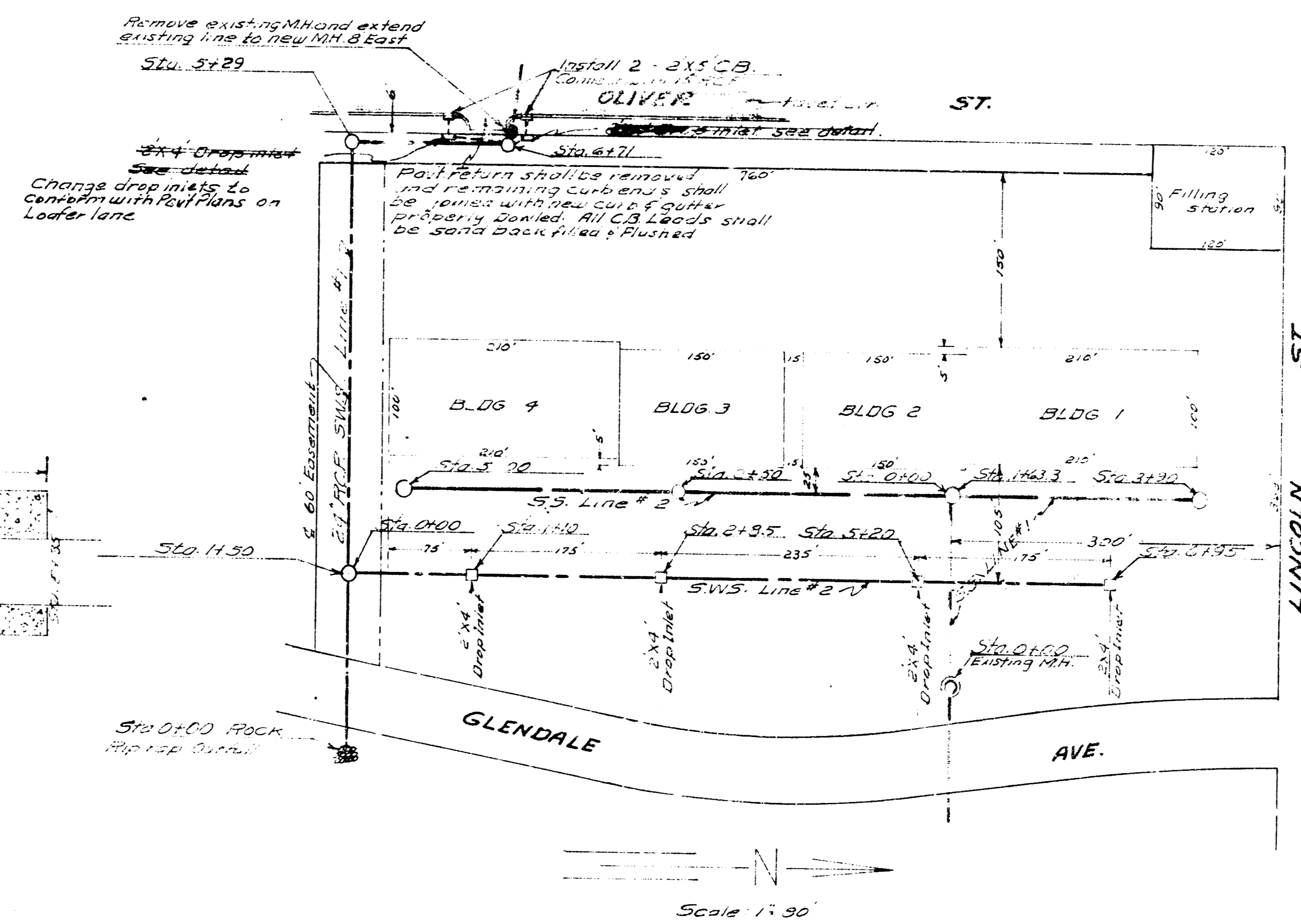
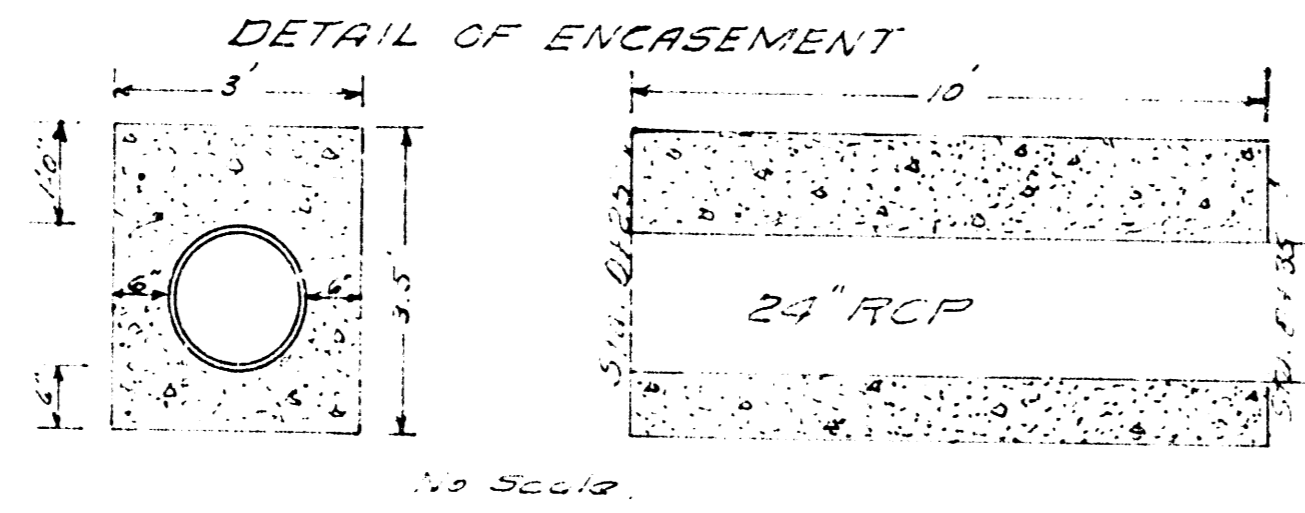


NOTE: Detailed plans on City Std. Drop inlet may be used upon request. City basins on Oliver shall be built to City Standards.



PRIVATE SANITARY & STORM SEWERS
 OLIVER TO GLENDALE - LINCOLN 88650.
 BUILDER'S INC.
 CITY OF WICHITA KANSAS
 BE SMITH CITY ENGINEER