

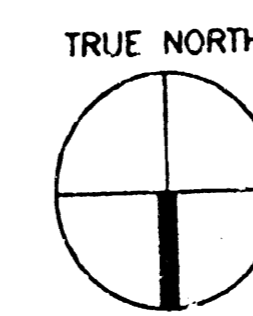
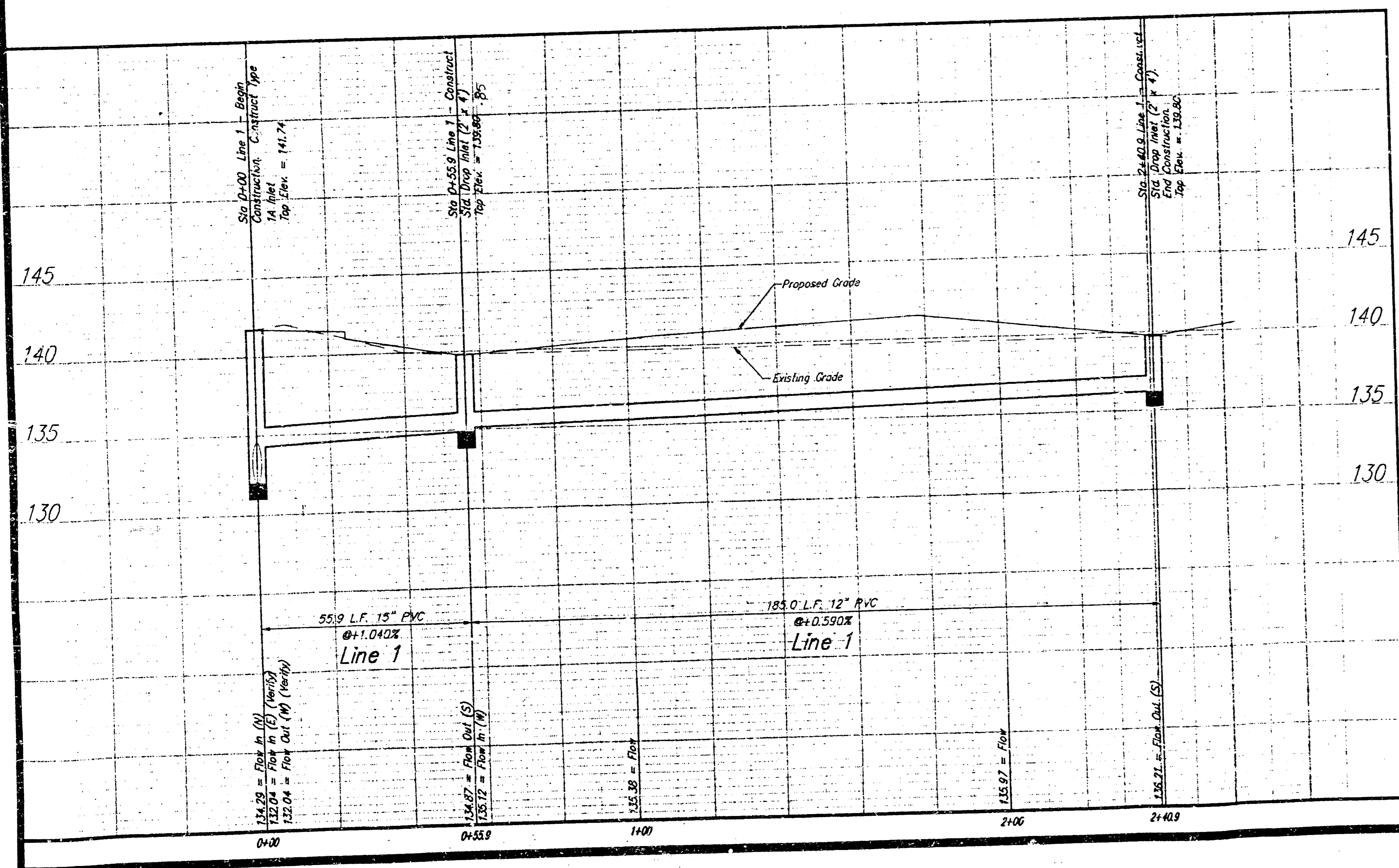
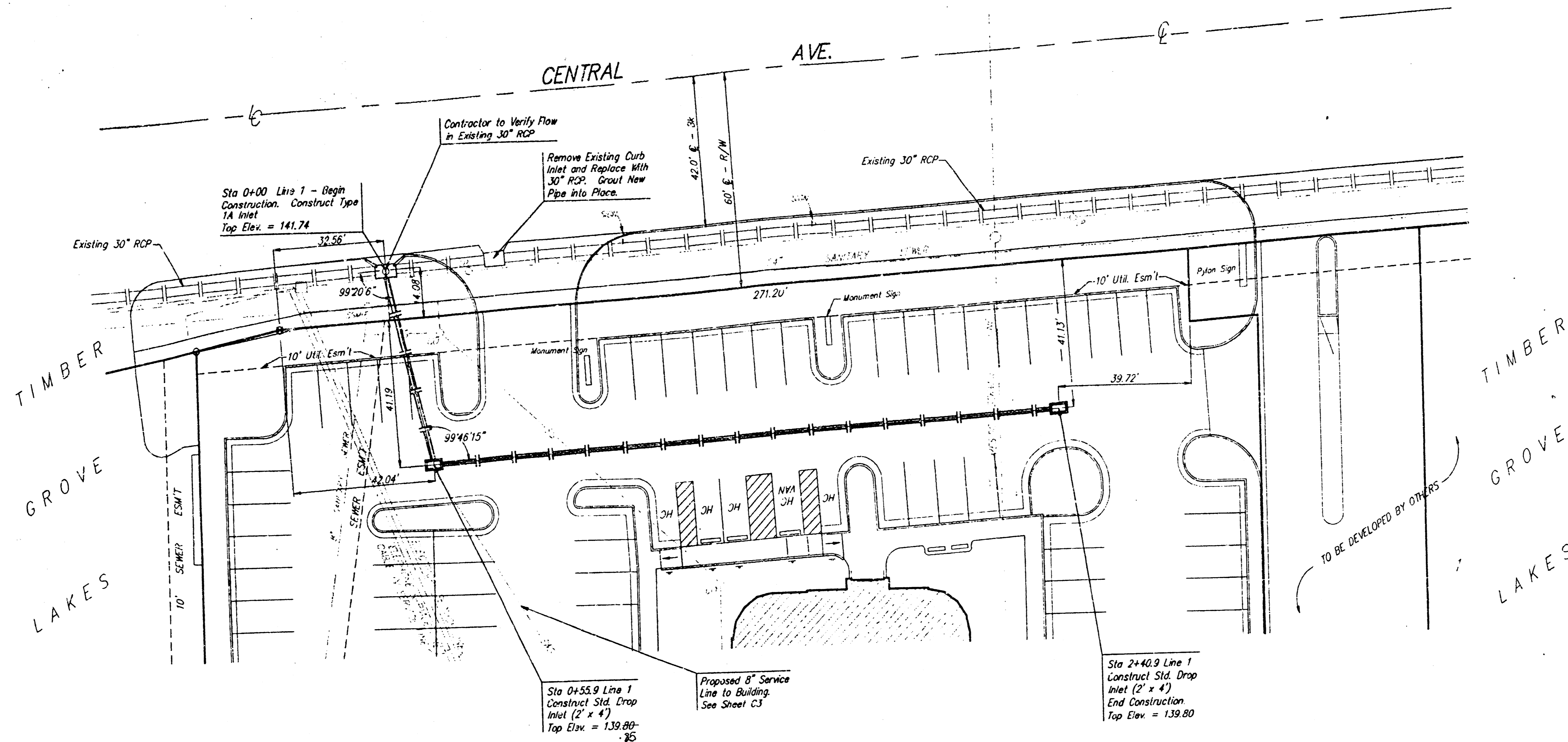
BENCHMARKS:

City Disc Located in Island at Northeast Corner of Maize Road and Central.

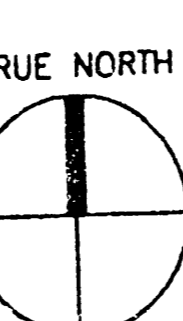
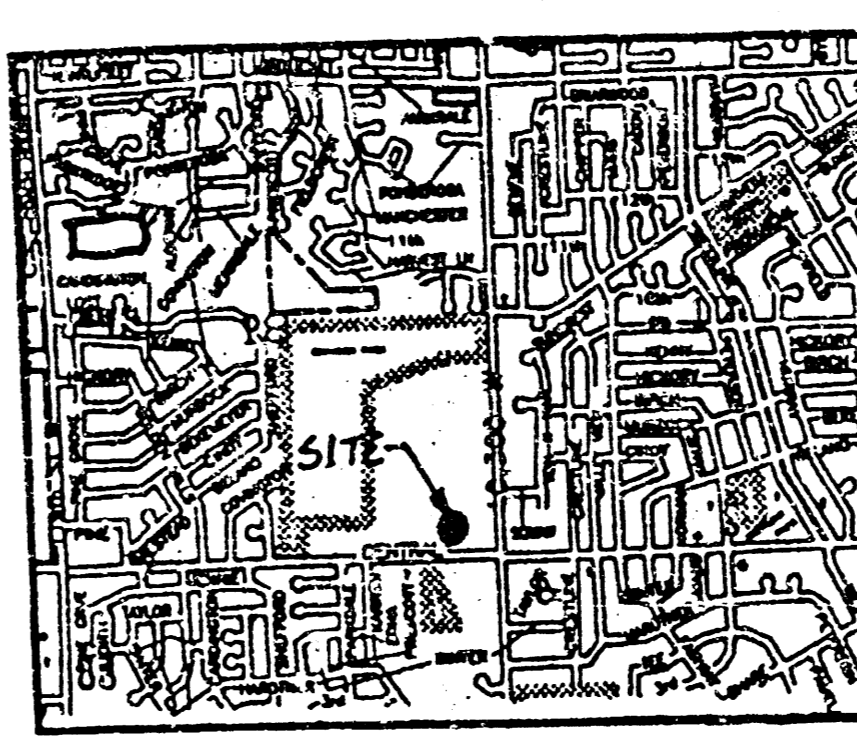
Elevation = 146.00 (City Datum)

Cut in Top of Curb on West Side of Maize Road Between Lots 2 & 3, Block 1, Tah-N-Hah Village.

Elevation = 151.29 (City Datum)



C4 STORM SEWER IMPROVEMENTS
 HORIZONTAL: 1" = 20'-0"
 VERTICAL: 1" = 5'-0"



LOCATION MAP

CITY OF WICHITA, KANSAS
 PRIVATE PROJECT NO. - 471 PPS (607861)
 CITY ENGINEER - MICHAEL LINDEBAK

As Built 10-28-94

APPROVED AS NOTED
 BY CITY ENGINEER OF WICHITA

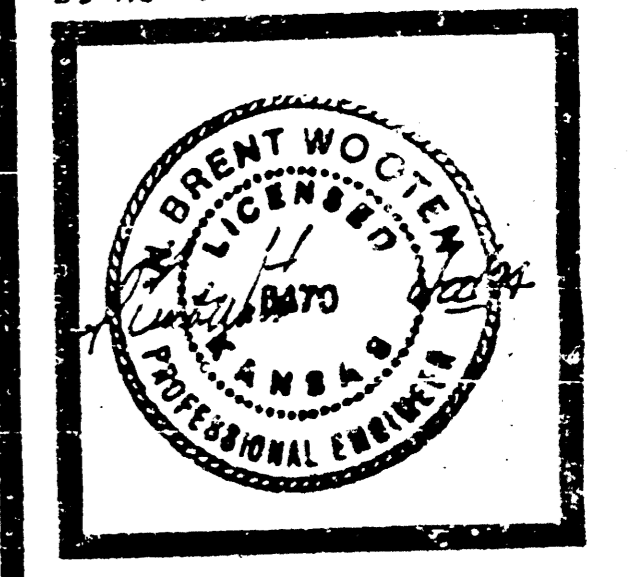
Sanitary Sewers _____
 Storm Sewers VRH 6/22/94
 Driveway Approaches _____
 Water Mains _____
 Paving _____

NOTE TO CONTRACTORS
 Inspection and testing for this project is to be provided by a Licensed Consulting Engineering Firm under contract with the Owner/Developer. Said inspection to be in accordance with the City of Wichita standard construction engineering practices and performed by a Licensed Professional Engineer. No work shall be commenced without written authorization by the City Engineer. All Construction and Materials shall comply with the City of Wichita Specifications and Standards (on file and available in the City Engineer's Office).

BOOKED
 3-23-95
 MCG

BAUGHMAN COMPANY, P.A.
 ENGINEERING & SURVEYING
 316-262-1271 • 316 ELLS • WICHITA, KANSAS 67202

CONTRACTOR SHALL VERIFY ALL CONDITIONS AND DIMENSIONS AT THE JOB SITE AND NOTIFY THE ARCHITECTS OF ANY DIMENSIONAL ERRORS, OMISSIONS OR DISCREPANCIES BEFORE BEGINNING OR FABRICATING ANY WORK. DO NOT SCALE DRAWINGS.



DAVID SCOTT WINDLE, AIA

10015 Technolodge Blvd West
 Suite 201
 DeSoto, Kansas 66528-4539
 Tel: 316/261-1995

Architecture
 Interiors
 Food Service Design

WEST WICHITA, KS
 (CHANGELIST #9 INCLUDED)



JOB NUMBER
94034.00

SHEET NUMBER
C4
 OF SHEETS

DATE OF ORIGINAL ISSUE
 22 JUNE 1994

NO. DATE REVISIONS BY
 DATE OF THIS PRINTING