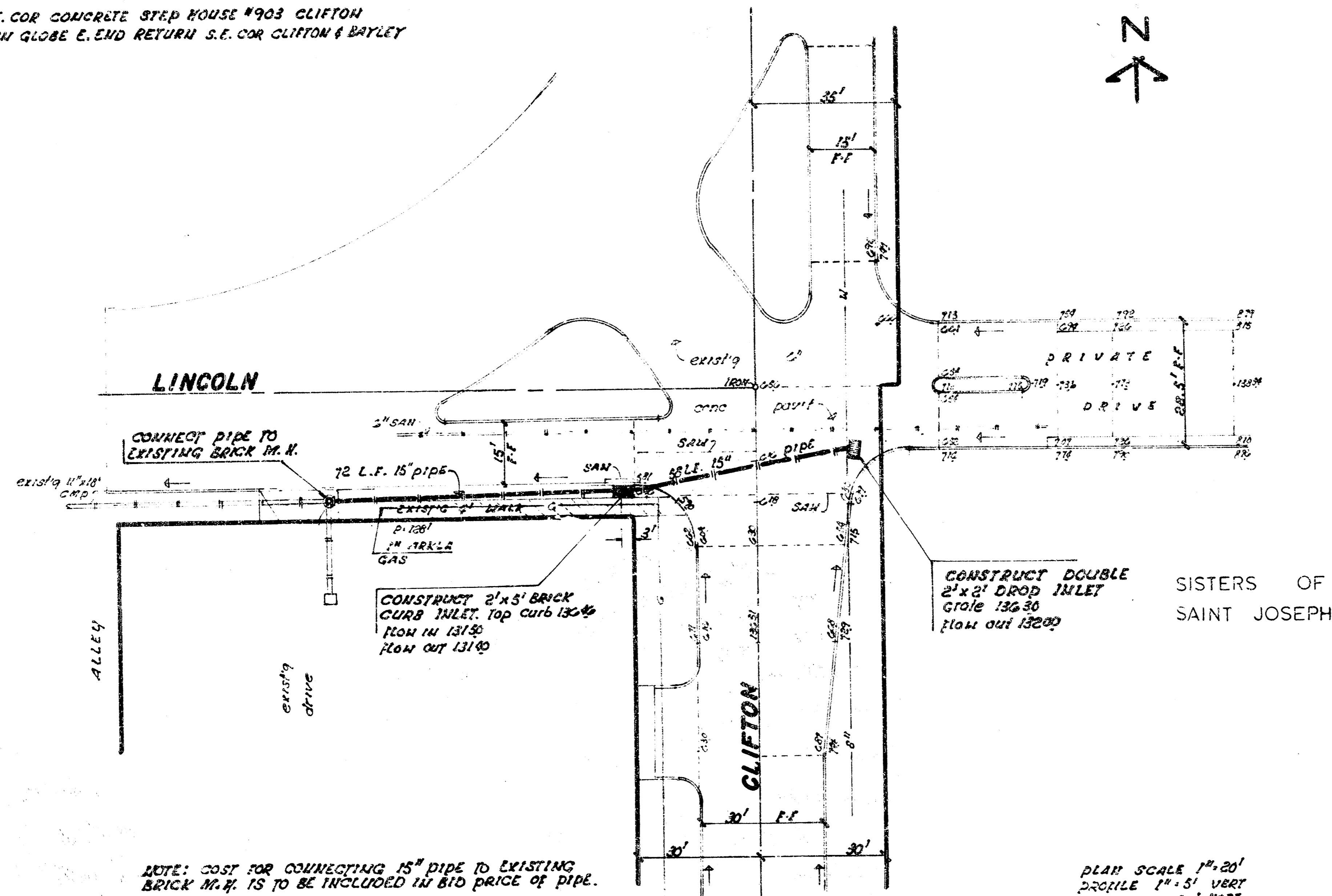
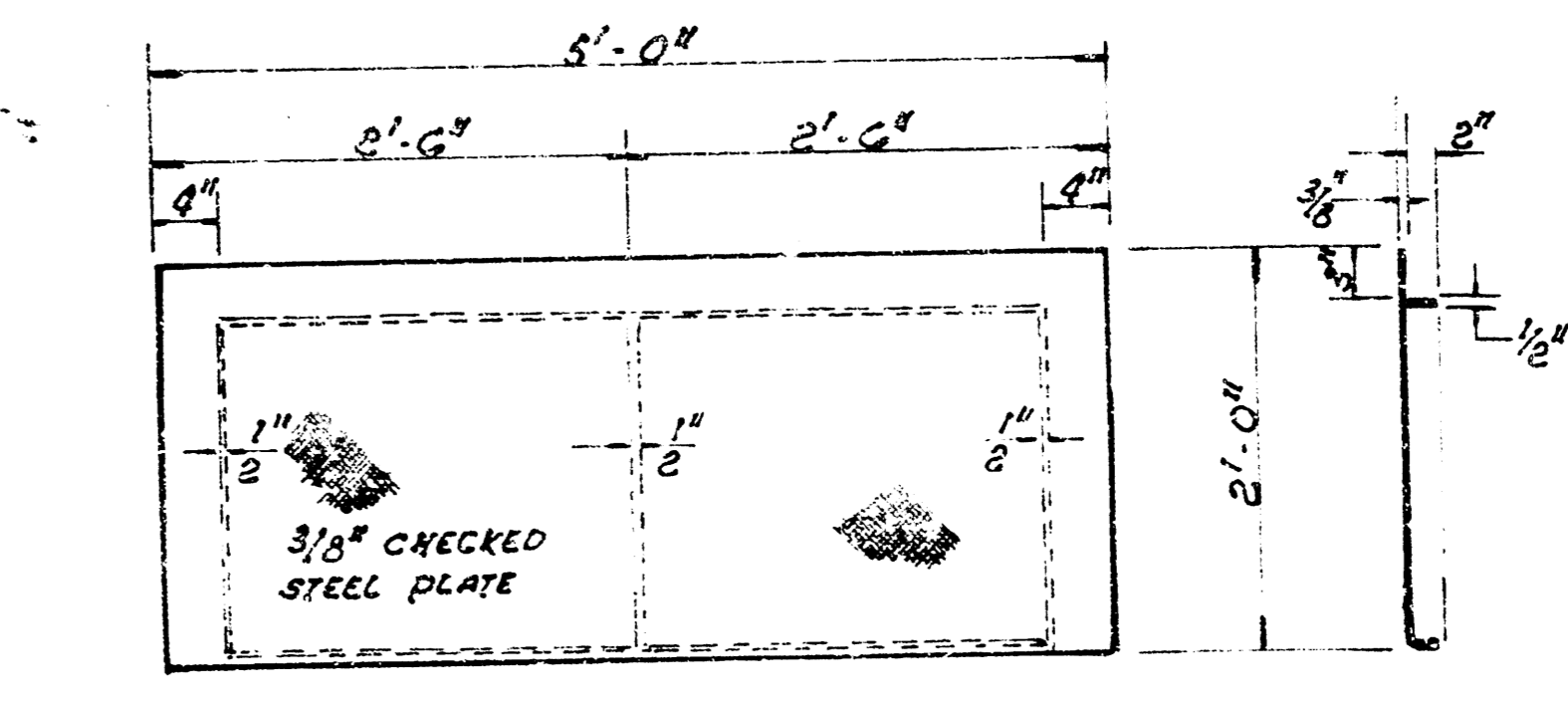


B.M. 13778 N.E. COR CONCRETE STEP HOUSE #903 CLIFTON  
 B.M. 13995 'G' IN GLOBE E. END RETURN S.E. COR CLIFTON & BAYLEY

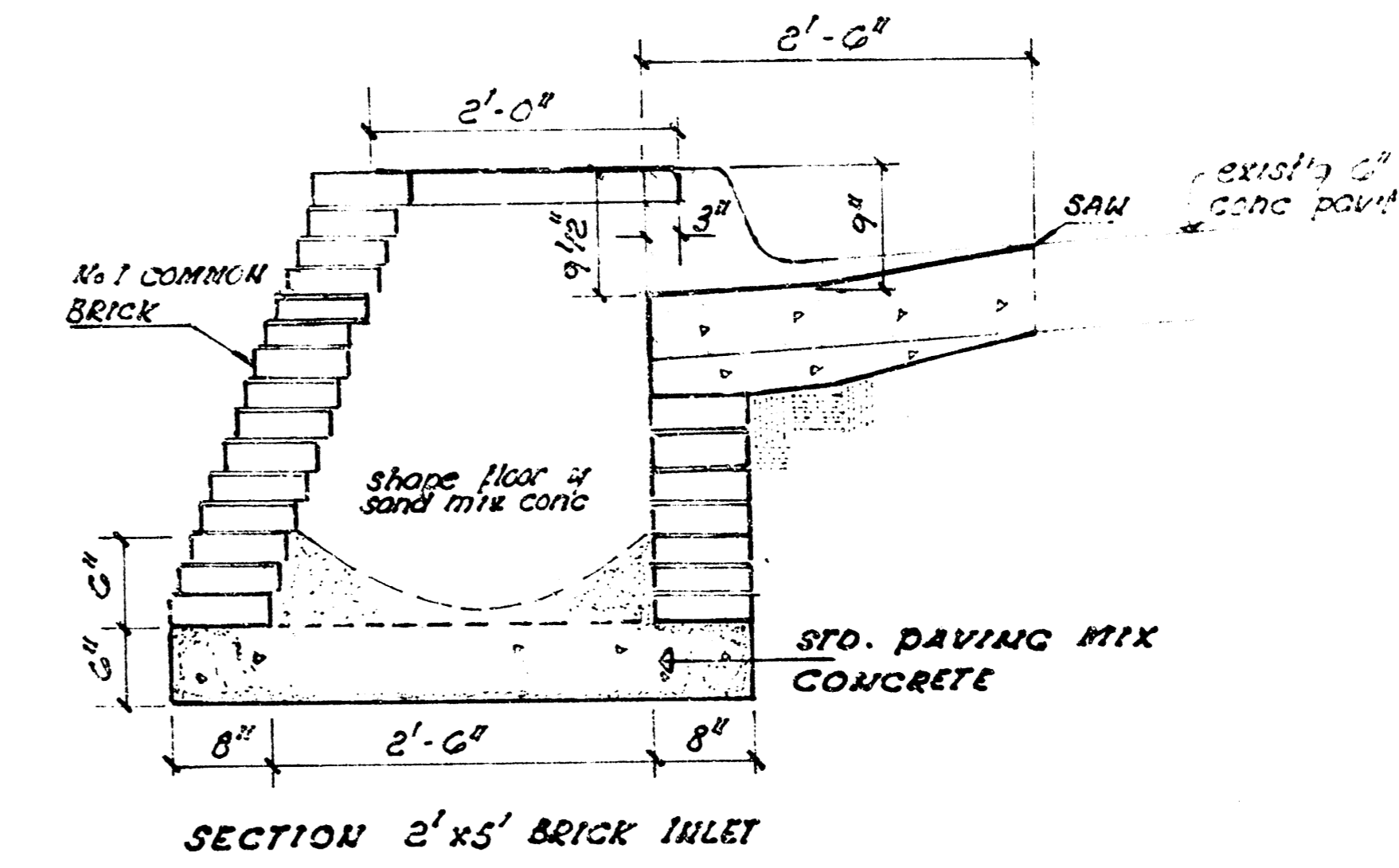


NOTE: COST FOR CONNECTING 15\"/>

PLAN SCALE 1\"/>

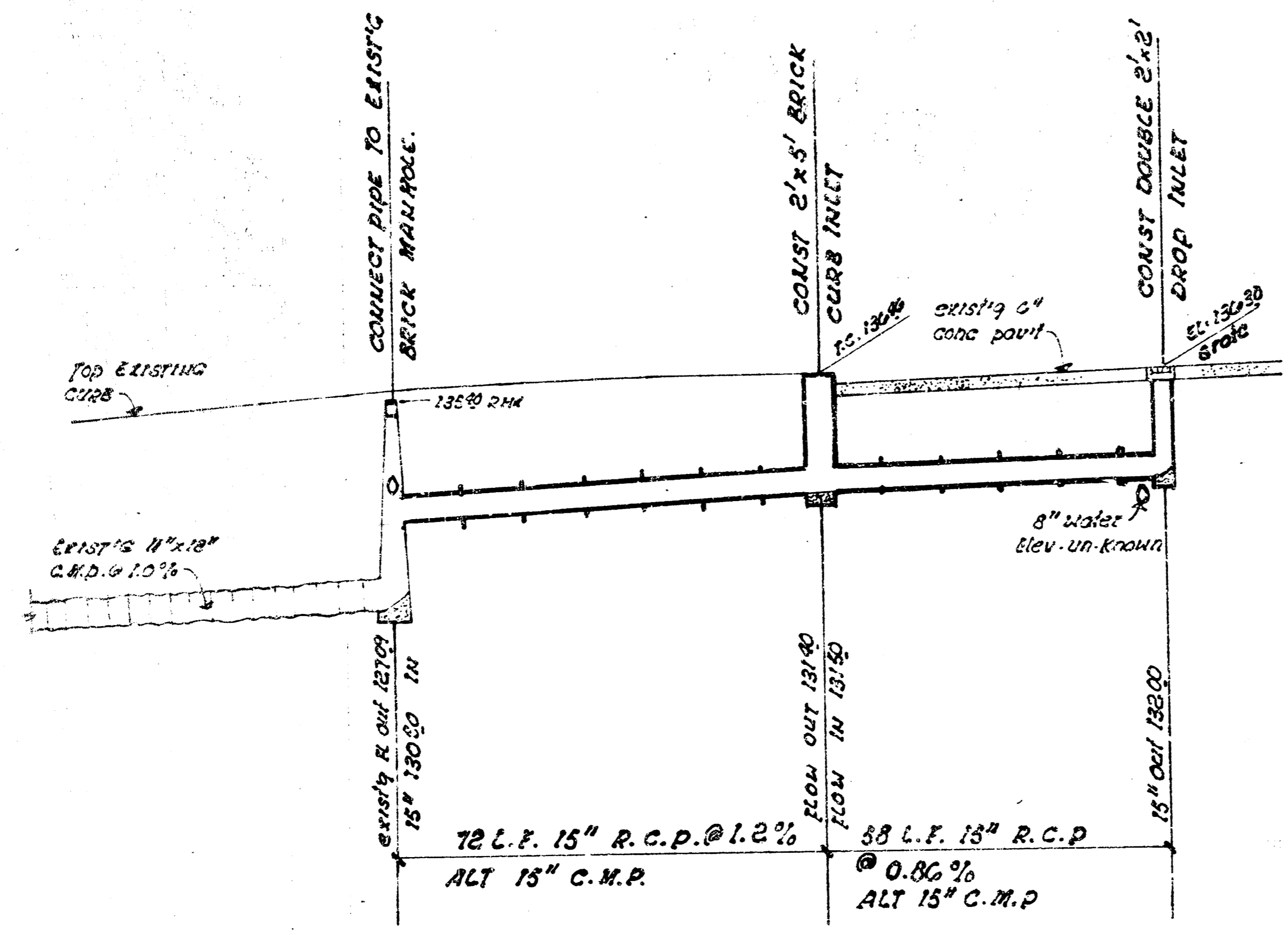


STEEL INLET COVER weight 200 lbs  
 shop paint - black asph



SECTION 2' x 5' BRICK INLET

140  
 135  
 130  
 125



**STORM WATER SEWER  
 RECONSTRUCTION ON LINCOLN  
 AT CLIFTON.**  
 CITY OF WICHITA, KANSAS  
 R.H. BRUGGEMAN DIRECTOR OF  
 ENGINEERING / CITY ENGINEER  
 PROJ. No. 425-16-245-21102-000-000-001