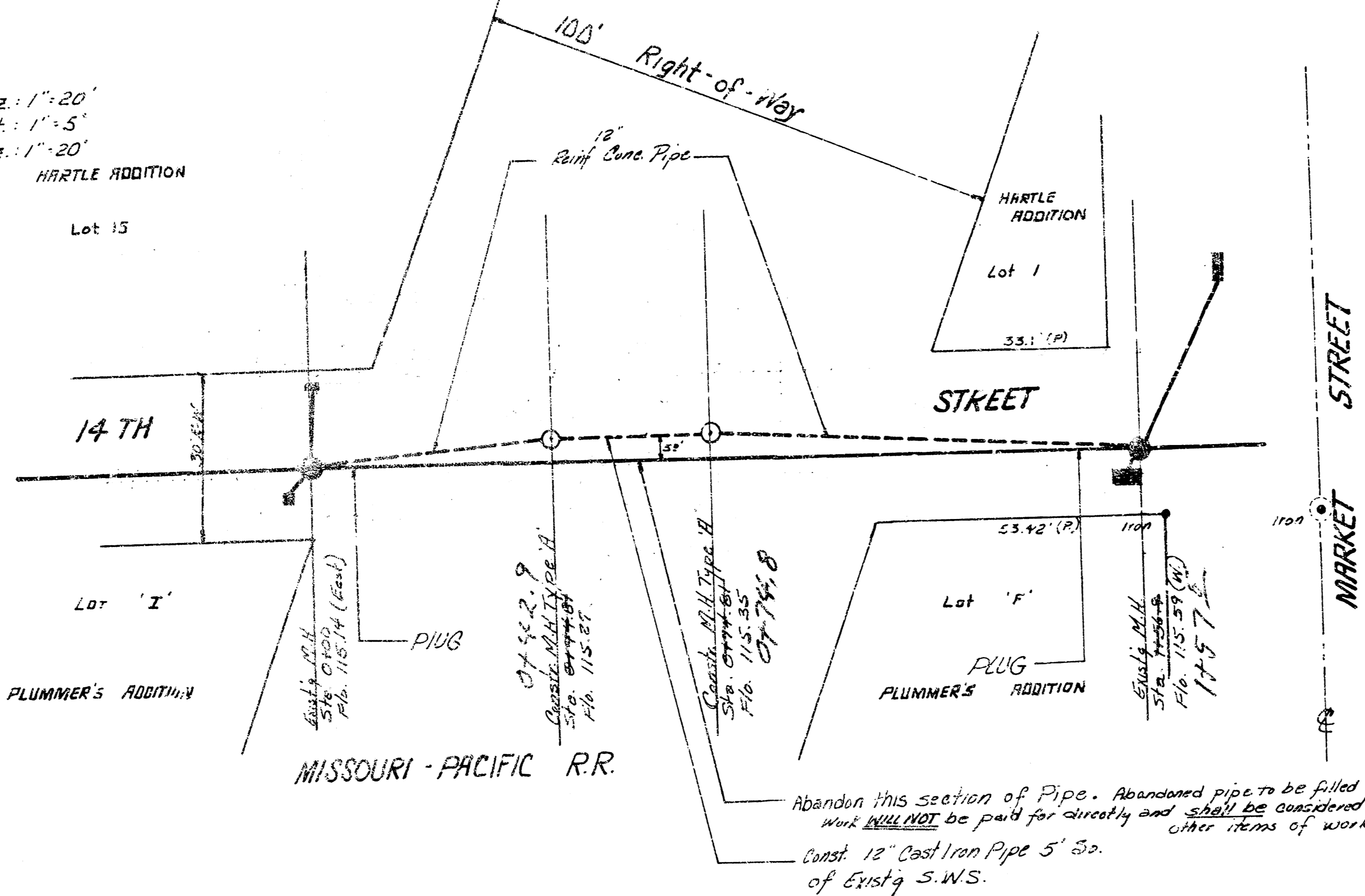


B.M. 11983 - RR SPIKE - West Face of RR 65' East of Broadway & South Side of 14TH Street
 B.M. 11982 - Top of Iron in Tumble, S.W. Broadway & 14TH St. set
 Base Line - Center Line of Existing Storm Water Sewer

Scale: Horz.: 1" = 20'
 Profile: Vert.: 1" = 5'
 Horz.: 1" = 20'



Note to Field Engineer: Field Engineer to determine type of Pavement to be replaced

Type Cast Iron Pipe to be: U.S. TYTON JOINT PIPE or Approved Equal.
 Manholes to be 4' Dia. Type 'A'

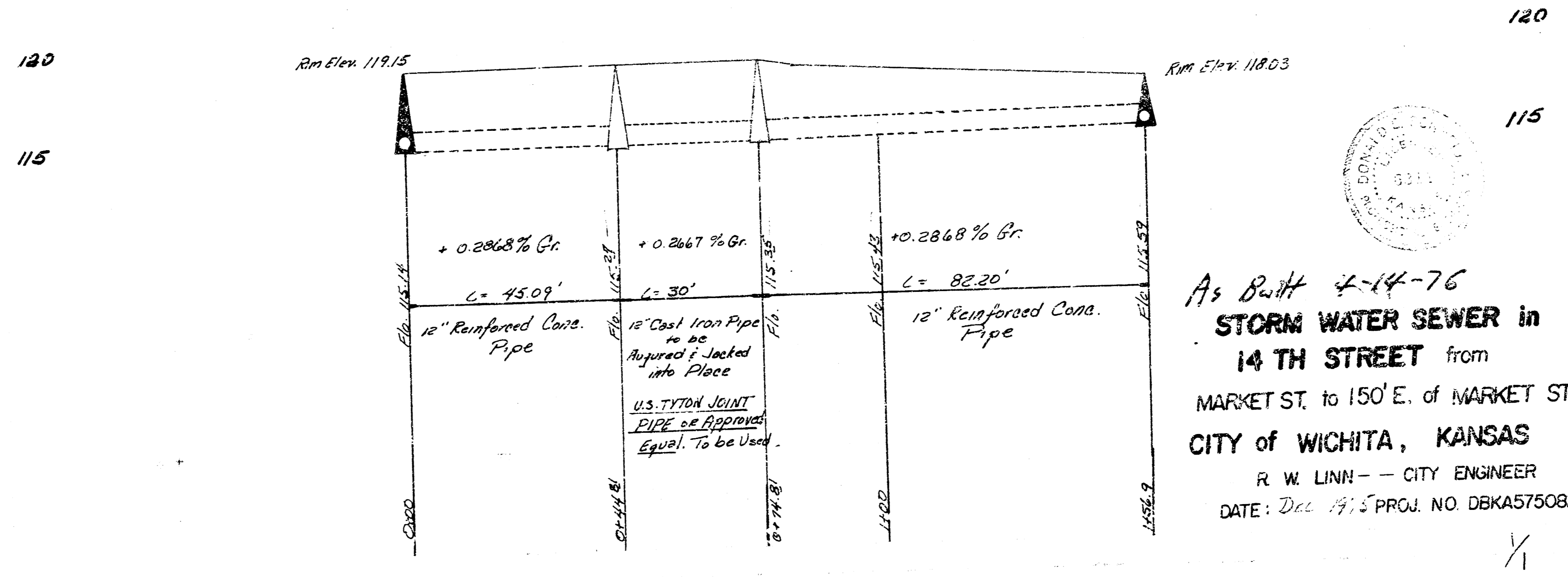
NOTE: 12" Cast Iron Pipe to be Rugged & Jacketed for Grade and Alignment.

Station 0+00.00
 5' x 5' Manhole
 11/16 11/15/57

Station 0+49.81
 Catch Basin
 11/16 11/15/57

Station 0+79.81
 Catch Basin
 11/16 11/15/57

Station 1+20.00
 5' x 5' Manhole
 11/16 11/15/57



As Built 4-14-76
STORM WATER SEWER in
14 TH STREET from
 MARKET ST. to 150' E. of MARKET ST.
 CITY of WICHITA, KANSAS
 R. W. LINN - CITY ENGINEER
 DATE: Dec 1975 PROJ. NO. DBKA575082