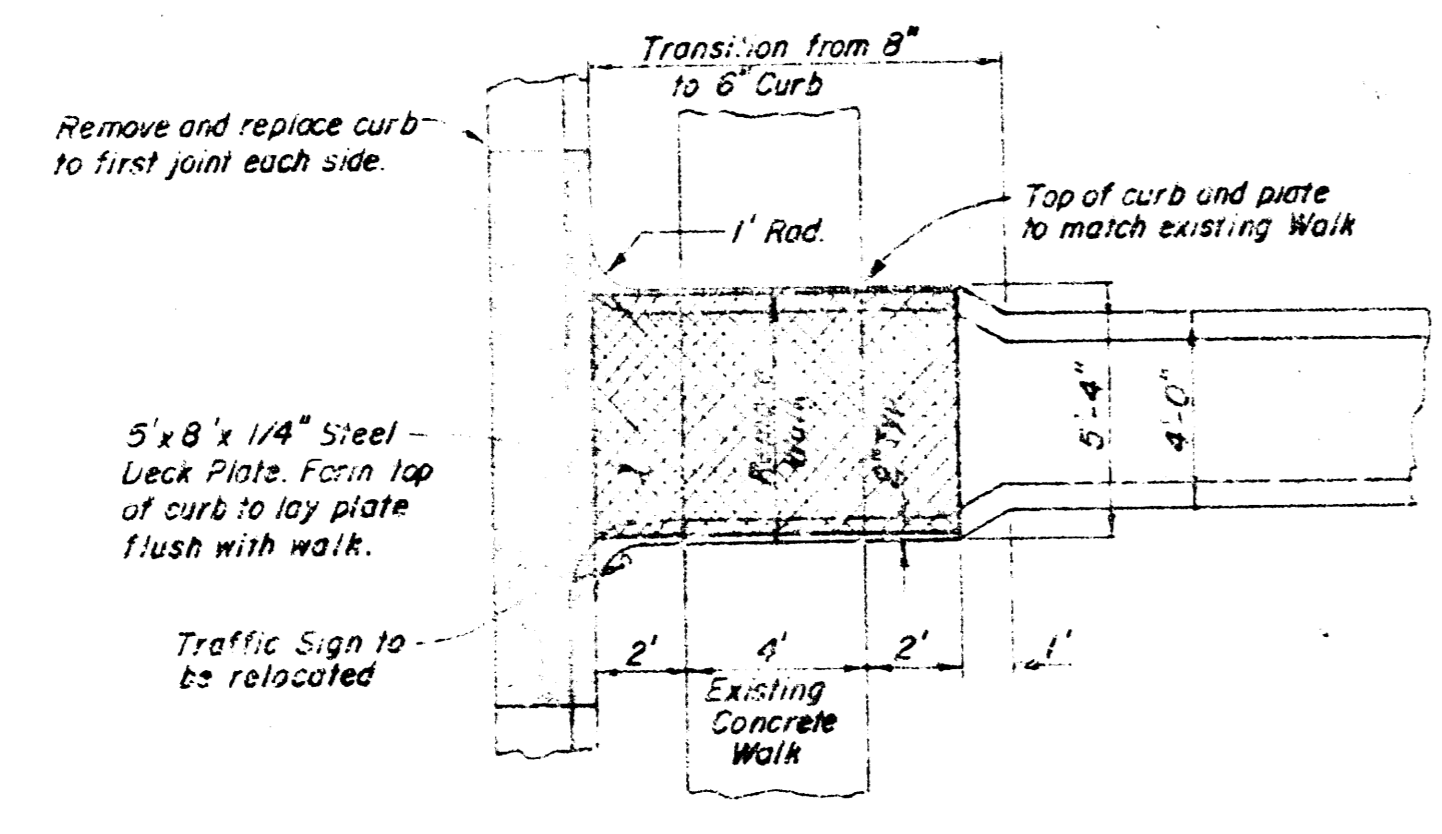


TYPICAL SECTION CONCRETE CHANNEL
1" = 2"

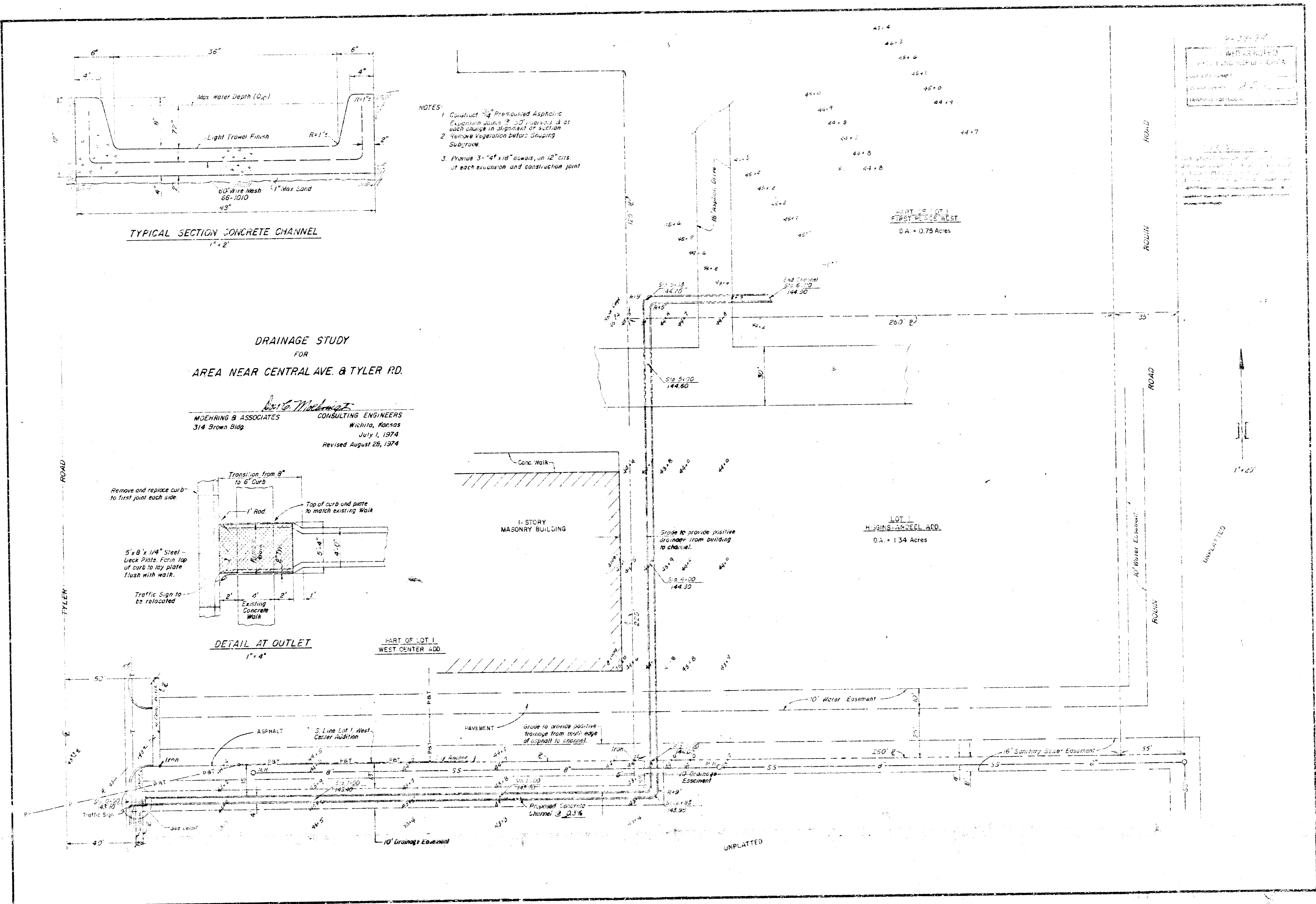
- NOTES:
1. Construct 3/4" Premixed Asphalt Expansion Joints 2' on intervals at 2' each change in alignment or section.
 2. Remove vegetation before sloping Subgrade.
 3. Provide 3" x 4" x 1/2" dowels, in 12" cts. at each expansion and construction joint.

DRAINAGE STUDY
FOR
AREA NEAR CENTRAL AVE. & TYLER RD.

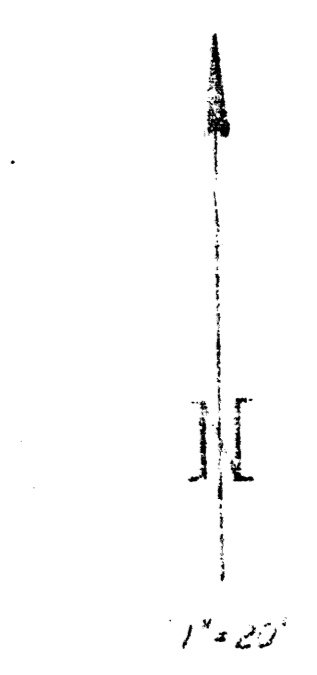
W. S. Moehring
MOEHRING & ASSOCIATES CONSULTING ENGINEERS
314 Brown Bldg. Wichita, Kansas
July 1, 1974
Revised August 28, 1974



DETAIL AT OUTLET
1" = 4"



2-27-74
WITNESSED
BY THE COUNTY CLERK OF WICHITA
KANSAS
COUNTY CLERK
WICHITA, KANSAS



UNPLATTED