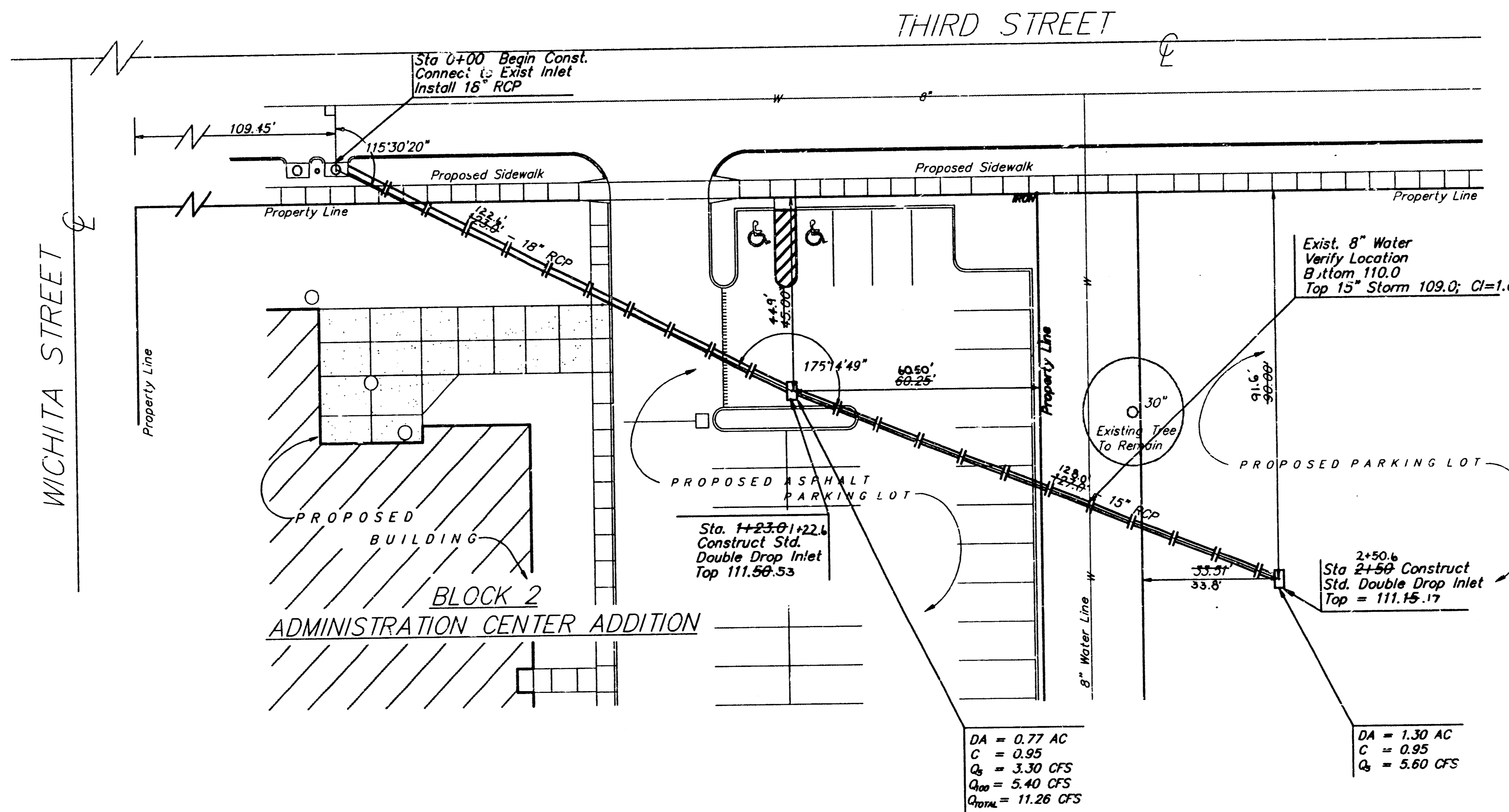
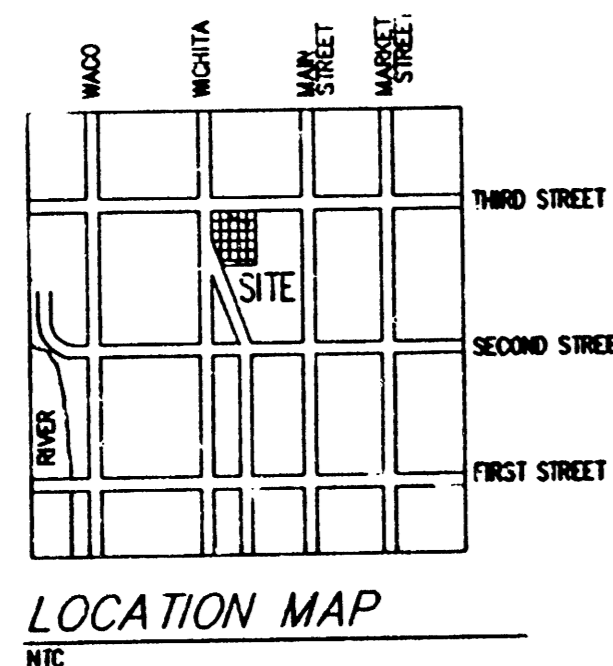


GENERAL NOTES

- Underground utility service lines and overhead utility pole lines are to be adjusted as necessary by others prior to construction unless the plans specifically call for their adjustment by the Contractor or unless the plans specifically identify a utility to be adjusted by its owner during construction. Existing utilities and their location, as shown on the plans, represent the best information obtainable for design. Location information has been obtained from the various utility companies and is either from company record drawings or company provided field locations. The Contractor will be required to work around existing utilities within the right-of-way which do not conflict with proposed construction.
- The Contractor shall be responsible for preserving property irons. The Contractor will be required to re-establish any property irons which are damaged or destroyed by his construction operations. Such irons shall be re-established by a licensed land surveyor in accordance with state law.



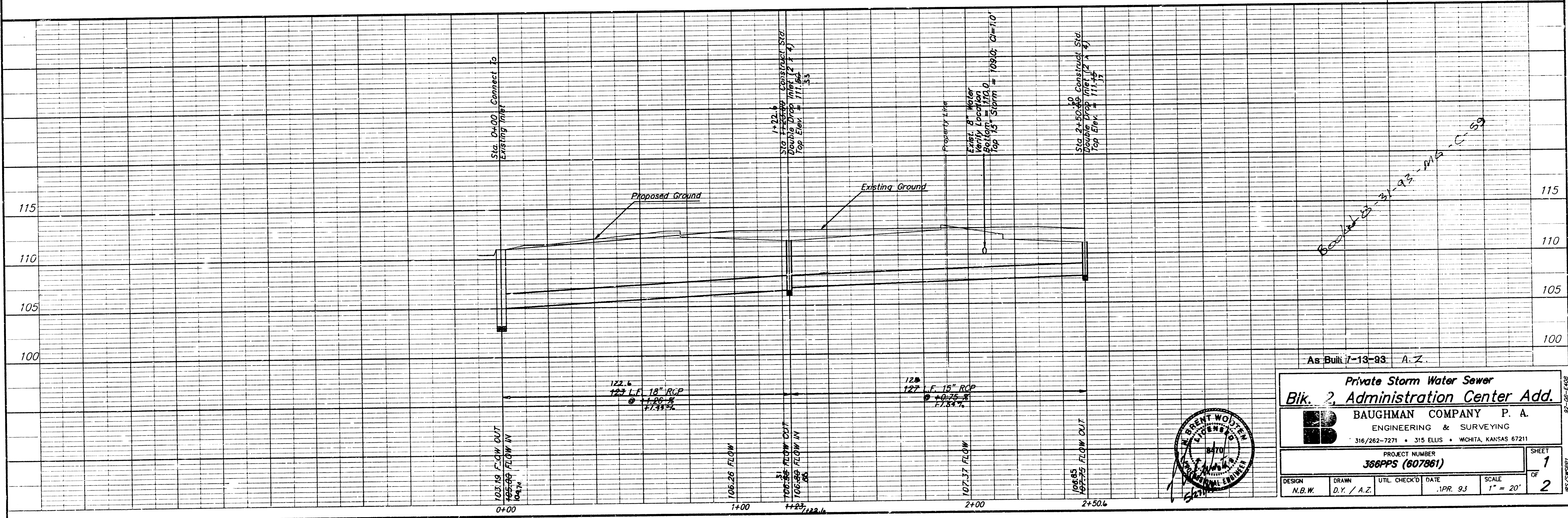
DA = 0.77 AC	DA = 1.30 AC
C = 0.95	C = 0.95
Q _s = 3.30 CFS	Q _s = 5.60 CFS
Q ₁₀₀ = 5.40 CFS	
Q ₁₀₀₀ = 11.26 CFS	

APPROVED AS NOTED
BY CITY ENGINEER OF WICHITA

Sanitary Sewers _____
Storm Sewers URH 5/22/93
Driveway Approaches _____
Water Mains _____
Paving _____

NOTE TO CONTRACTORS
Inspection and testing for this project is to be provided by a Licensed Consulting Engineering Firm under contract with the Owner/Developer. Said inspection to be in accordance with the City of Wichita standard construction engineering practices and certified by a Licensed Professional Engineer. No work shall be performed in dedicated easements or public right-of-way by the Contractor without such inspection nor shall any work be commenced without written authorization by the City Engineer.

BENCHMARK:
" + " ON TOP OF CURB AT PARKING LOT, APPROX. 55' N & 35' E OF THE CENTERLINE INTERSECTION OF WICHITA AND THIRD STREET.
ELEV. = 111.87 CITY DATUM



As Built 7-13-93 A.Z.

Private Storm Water Sewer
Blk. 2, Administration Center Add.

BAUGHMAN COMPANY P. A.
ENGINEERING & SURVEYING
316/262-7271 • 315 ELLIS • WICHITA, KANSAS 67211

PROJECT NUMBER
386PPS (807861)

DESIGN	DRAWN	UTIL. CHECK'D DATE	SCALE
N.B.W.	D.Y. / A.Z.	.1PR. 93	1" = 20"

SHEET 1 OF 2

INS/5/8/93

