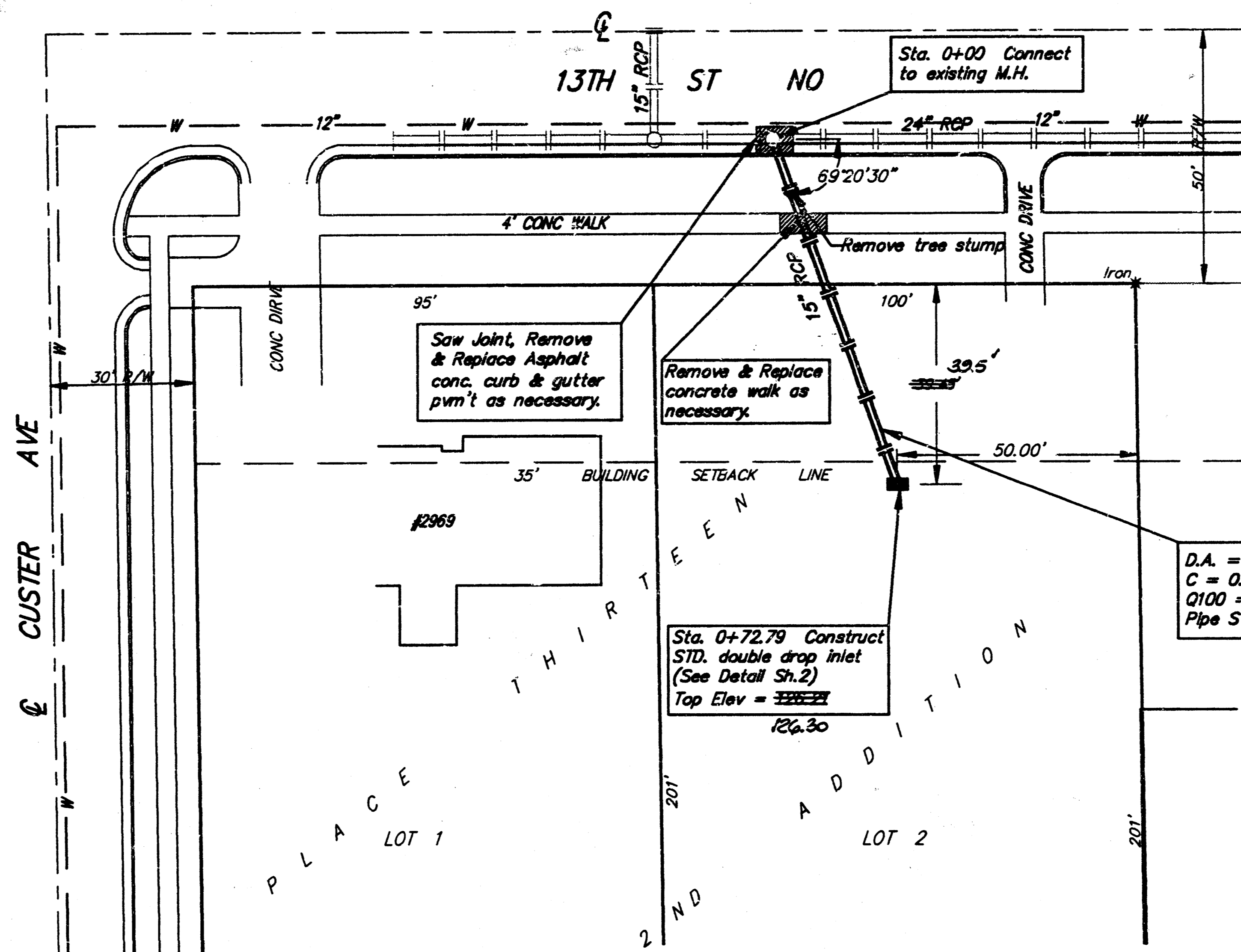


LOCATION MAP



APPROVED AS NOTED
BY CITY ENGINEER OF MOHAWA

Sanitary Sewers _____
 Storm Sewers VRH 9/8/92
 Driveway Approaches _____
 Water Mains _____
 Paving _____

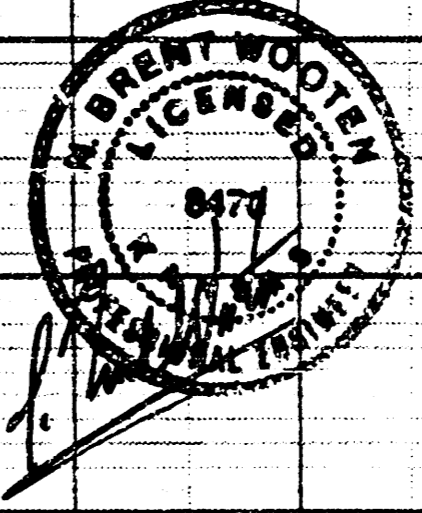
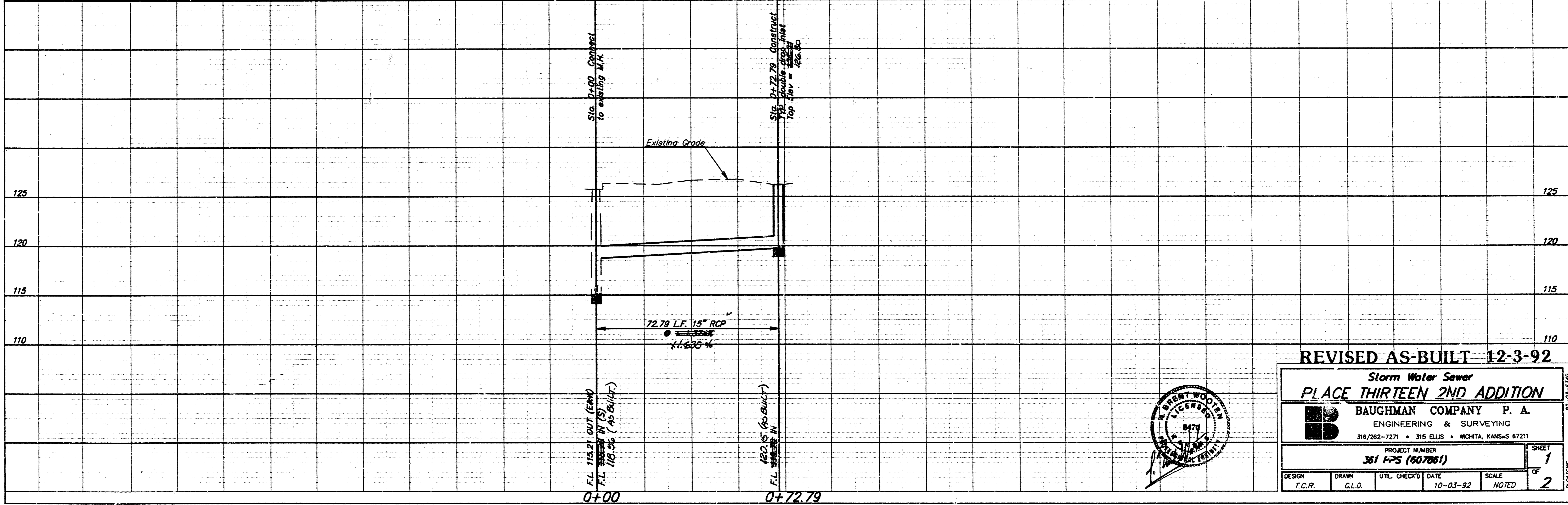
NOTE TO CONTRACTORS
 Inspection and testing for this project is to be provided by a Licensed Consulting Engineering Firm under contract with the Owner/Developer. Said inspection to be in accordance with the City of Wichita standard construction engineering practices and certified by a Licensed Professional Engineer. No work shall be performed in dedicated easements or public right-of-way by the Contractor without such inspection nor shall any work be commenced without written authorization by the City Engineer.

SCALE: 1" = 20' HORIZ.
 1" = 5' VERT.

Booked As Built
 2-22-93, LEP
 D-200

BENCH MARK:
 CITY STANDARD DISC, 29.5' E AND 35.9' N OF CENTER OF
 SHERIDAN & 13TH STREET NO. ELEV = 125.72 CITY DATUM

SQUARE CUT ON TOP OF CURB AT WEST END OF CURB
 RETURN AT S.W. CORNER OF CUSTER & 13TH ST. NO.
 ELEV = 127.93 CITY DATUM



REVISED AS-BUILT 12-3-92

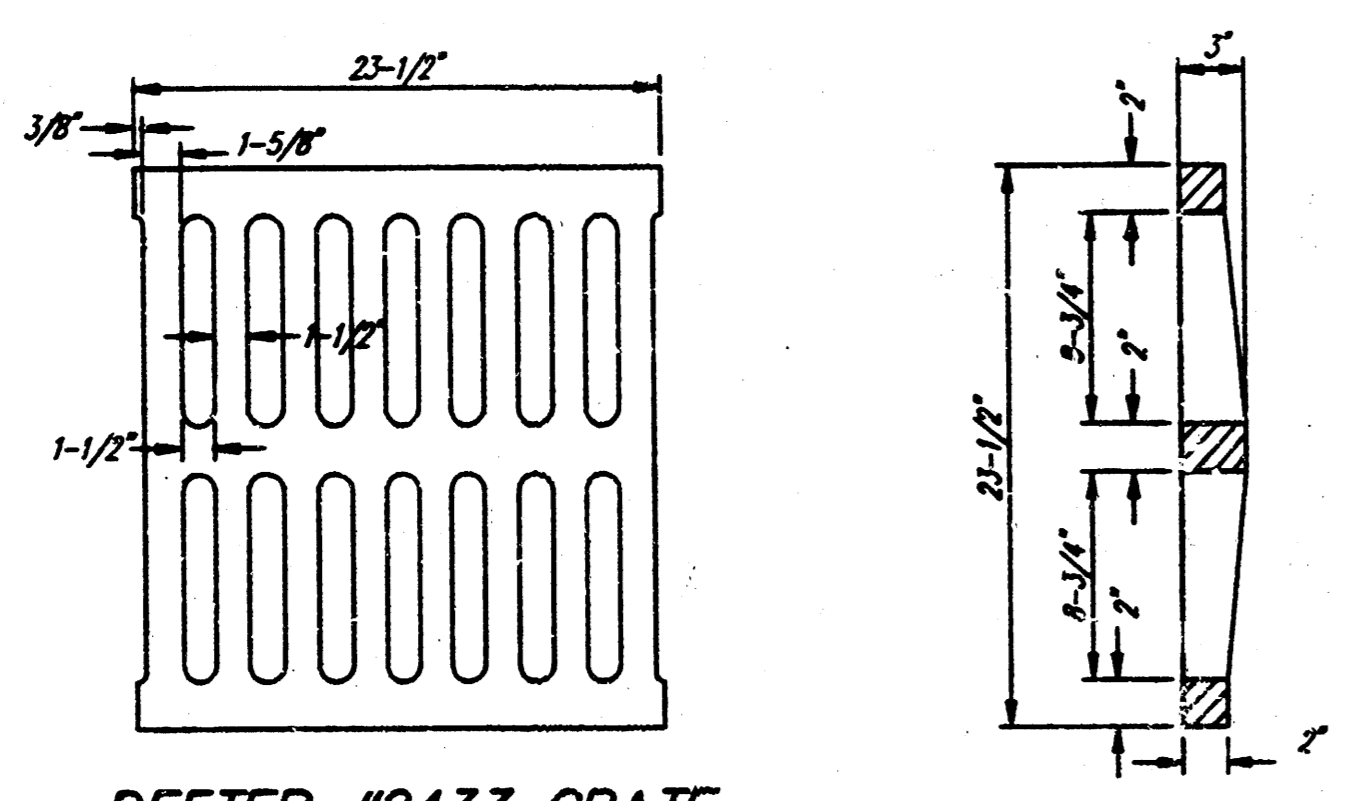
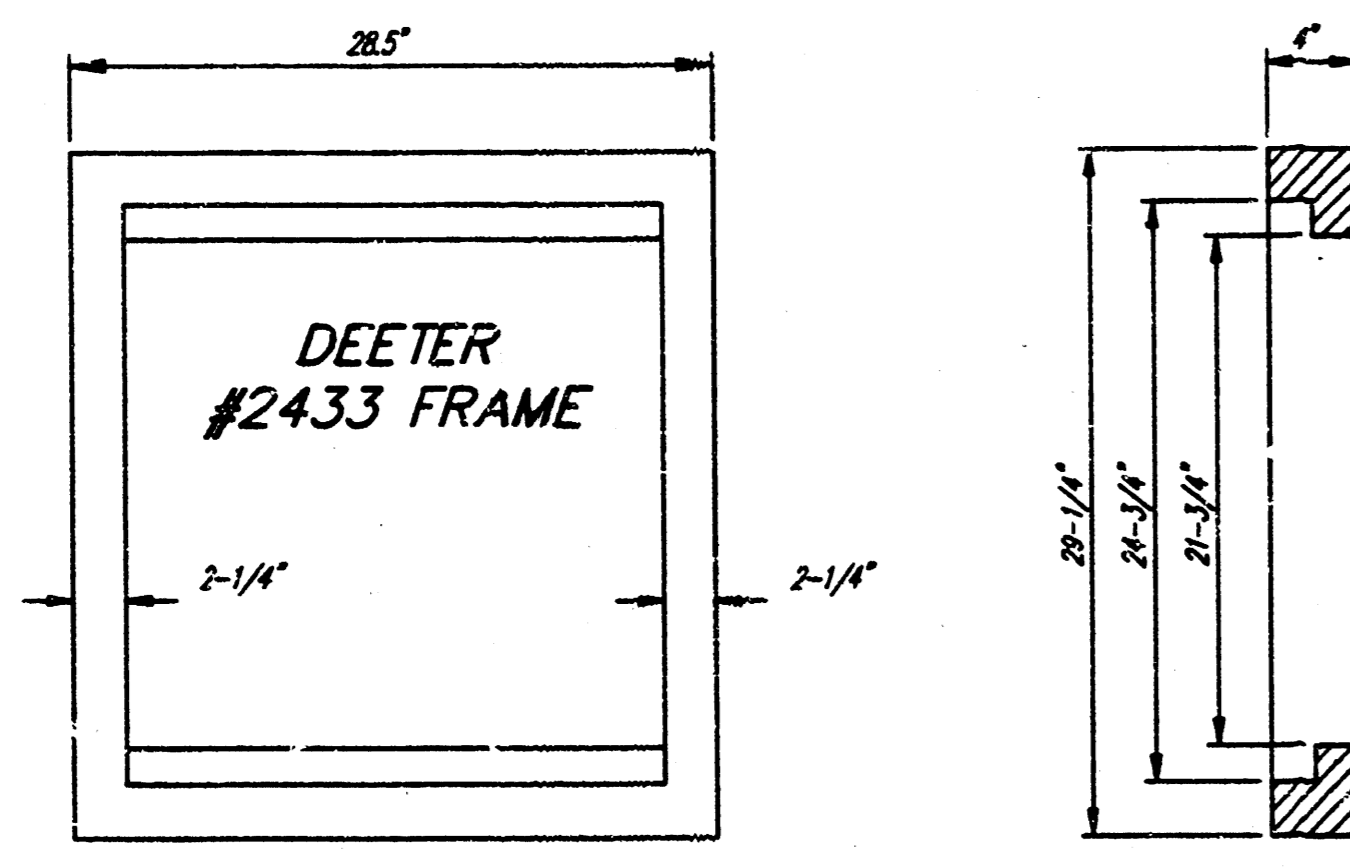
Storm Water Sewer
PLACE THIRTEEN 2ND ADDITION

BAUGHMAN COMPANY P. A.
 ENGINEERING & SURVEYING
 316/282-7271 • 315 ELLIS • WICHITA, KANSAS 67211

PROJECT NUMBER
361 FPS (607861)

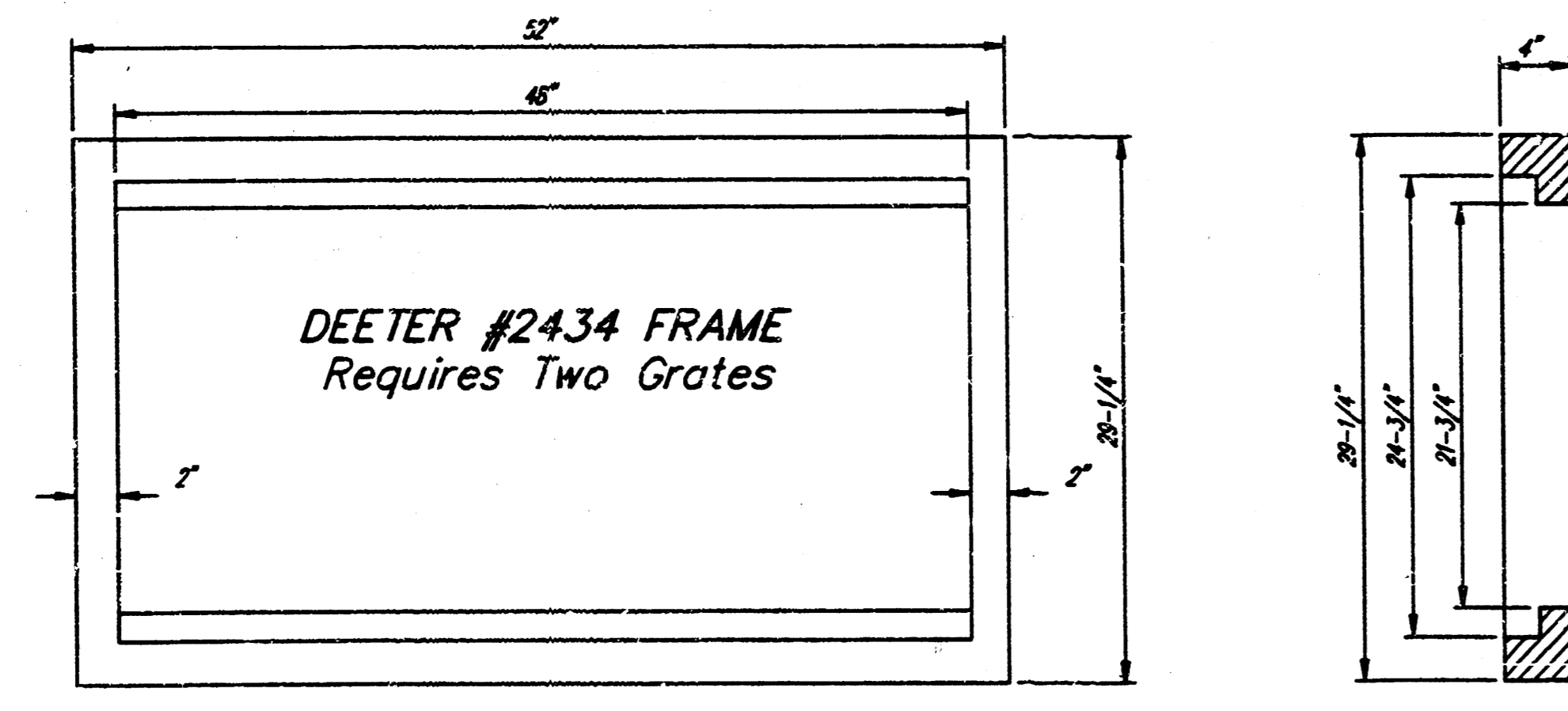
DESIGN	DRAWN	UTIL. CHECK'D	DATE	SCALE
T.C.R.	G.L.D.		10-03-92	NOTED

SHEET 1 OF 2

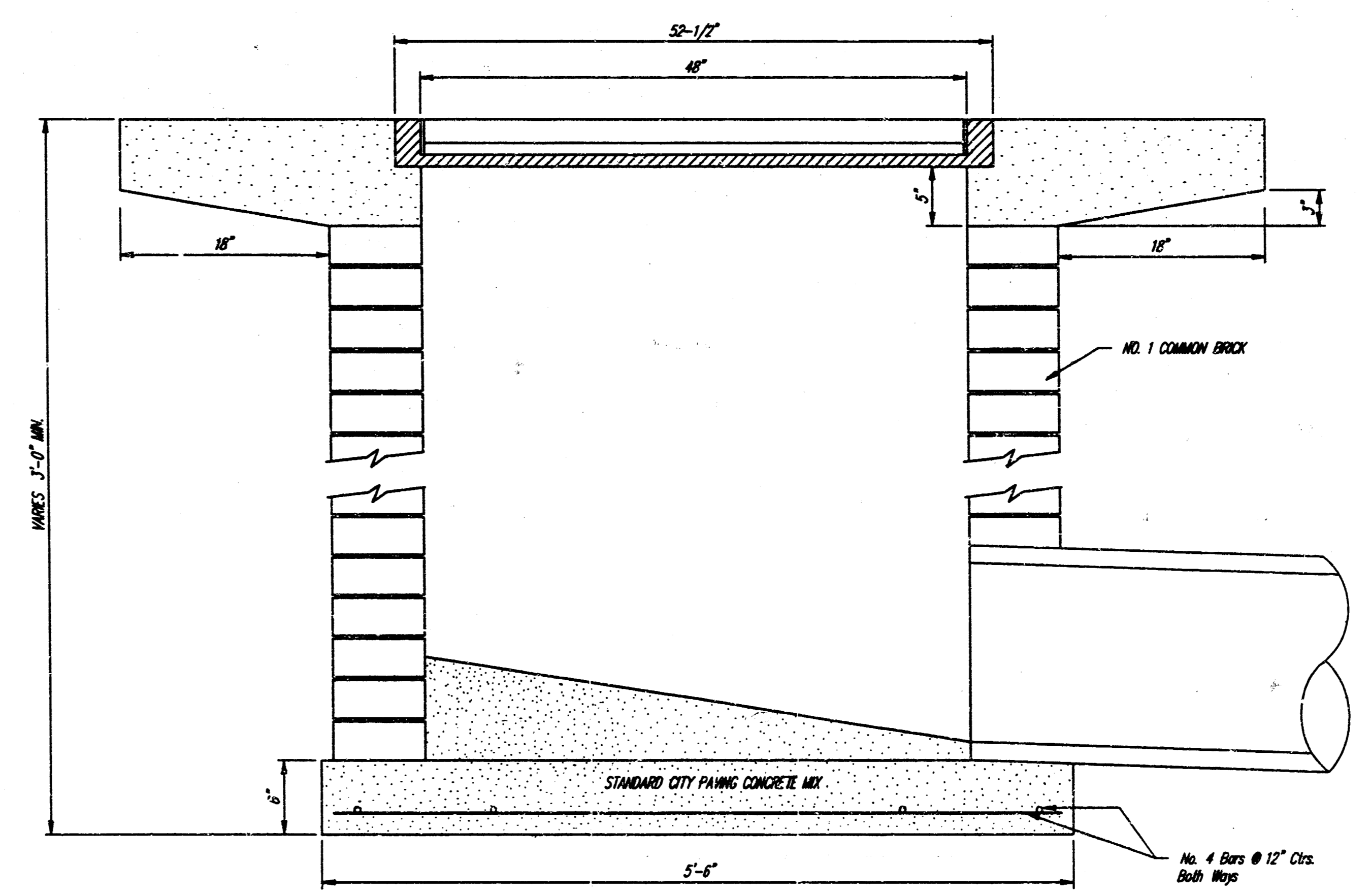
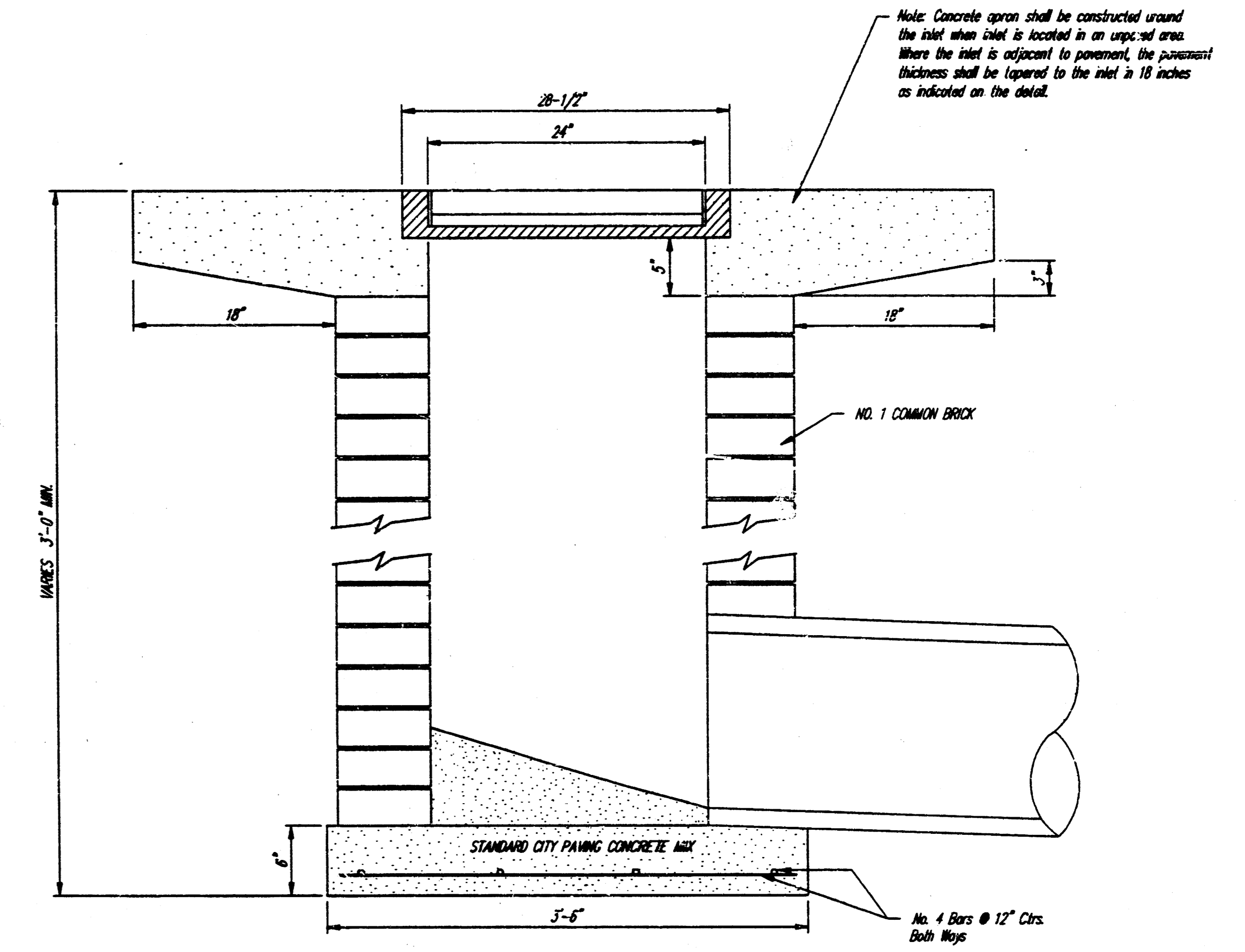
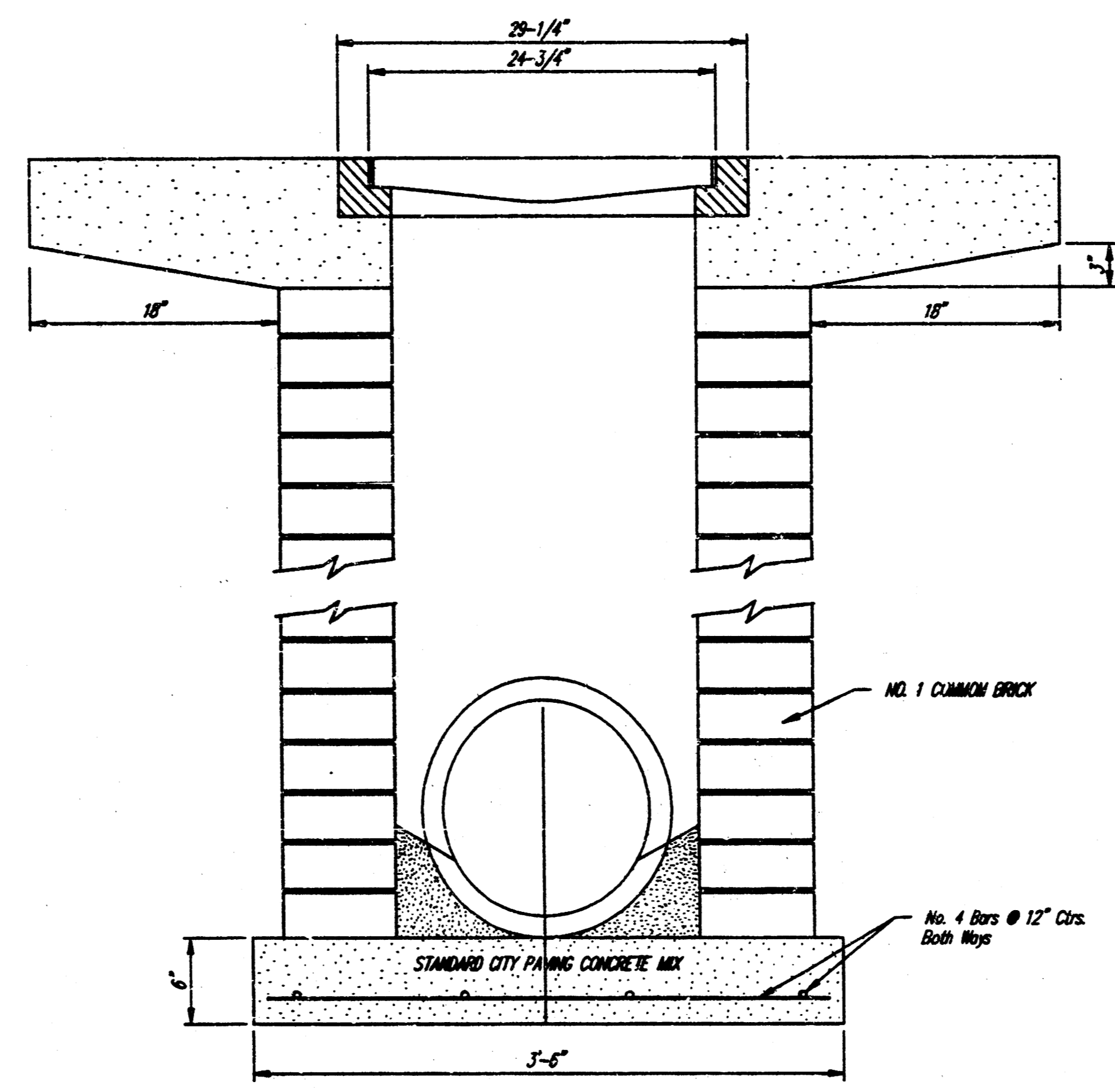


DEETER #2433 GRATE
24" x 24" Frame and Grate Detail

NOTE: Grates shall be imprinted on the top surface with "CITY OF WICHITA" using letters of least 1" in height. Other marking methods may be approved by the engineer.



Double 24" x 24" Frame Detail



DROP INLET DETAILS	
M.E. Lindebak, City Engineer City of Wichita, Kansas	
Project Number	2
361 PPS(607861)	2