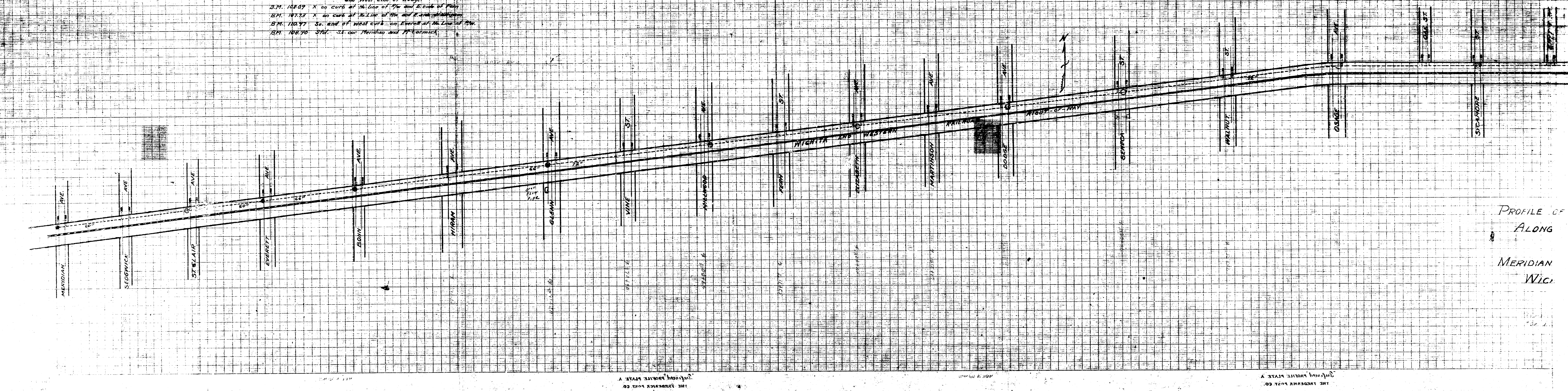
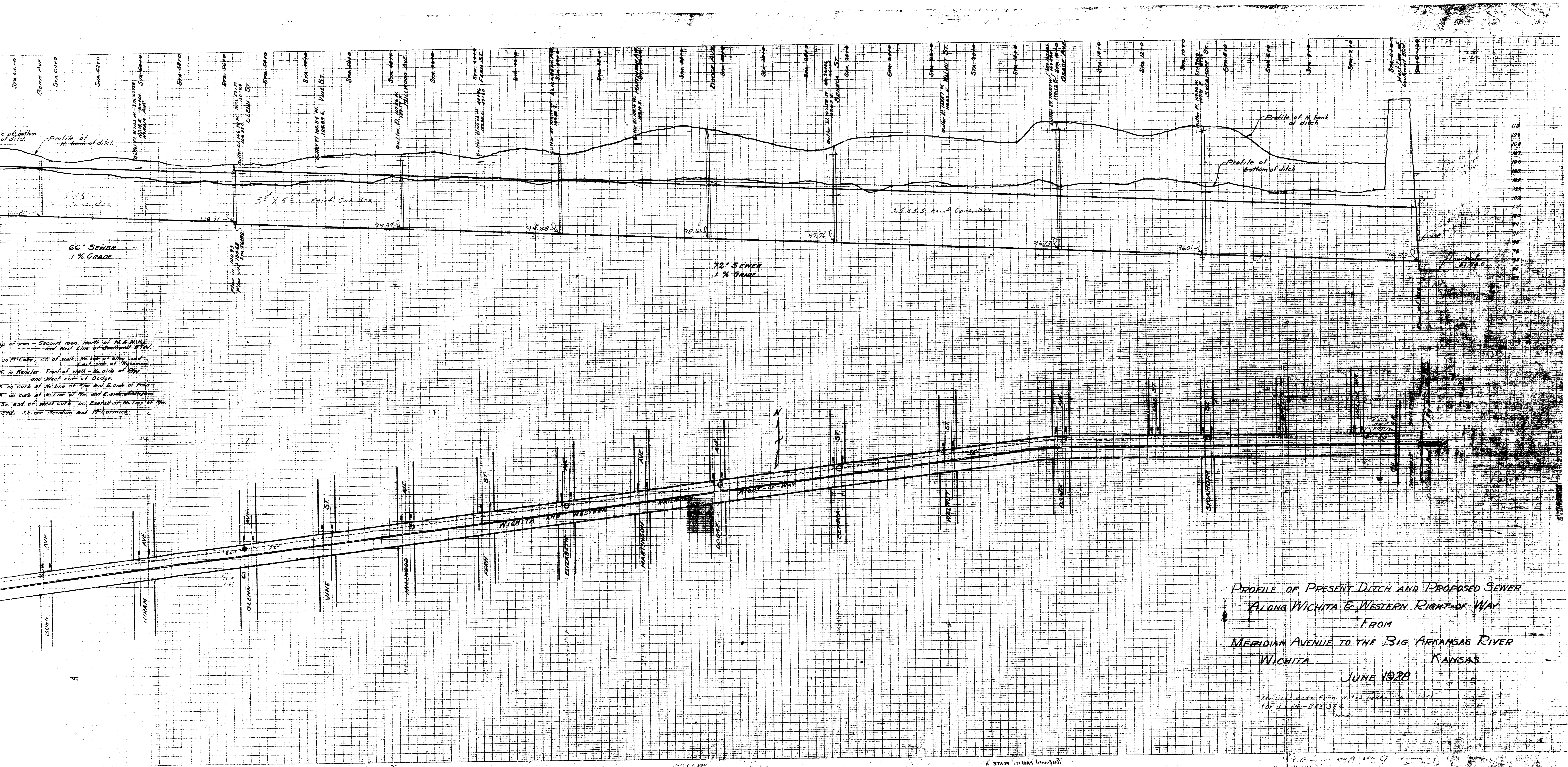


B.M. 1185 Top of iron - Second from north of N. 5th St. and West side of Southwell St.  
 B.M. 1186 Top of iron - at of wall, N. side of alley and East side of Chapman St.  
 B.M. 1095 N. in Keweenaw - Front of wall - N. side of 2nd St. and West side of Dodge.  
 B.M. 1089 X on curb at N. side of 2nd St. and E. side of 1st St.  
 B.M. 1077 X on curb at N. side of 2nd St. and E. side of 1st St.  
 B.M. 1087 S. on curb at N. side of 2nd St. and E. side of 1st St.  
 B.M. 1088 S. on curb at N. side of 2nd St. and E. side of 1st St.



PROFILE OF  
 ALONG  
 MERIDIAN  
 WIC.



PROFILE OF PRESENT DITCH AND PROPOSED SEWER  
 ALONG WICHITA & WESTERN RIGHT-OF-WAY  
 FROM  
 MERIDIAN AVENUE TO THE BIG ARKANSAS RIVER  
 WICHITA KANSAS  
 JUNE 1928

Prepared under plan filed for record  
 for 12-15-28-28334

up of iron - Second man north of M & M  
 and West line of street of M & M  
 in M & M - 2 ft of wall - No. 10 of city and  
 East side of Spruce St  
 in Kenler - Front of wall - No. 10 of city  
 and West side of Dodge  
 on curb at N. Line of Spruce St and E. side of Ferny  
 on curb at N. Line of Spruce St and E. side of Antenna  
 on end of West curb - on E. side of N. Line of Spruce St  
 on S. side of Meridian and McCormick

THE ENGINEER'S BOOK CO.  
 1917

THE ENGINEER'S BOOK CO.  
 1917