

PRIVATE STORM SEWER IMPROVEMENTS SOUTHEAST HIGH SCHOOL

PROJECT NO. 1326 PPS (607861)

GENERAL NOTES

1. Contractor will be required to provide a minimum advance notice of forty-eight (48) hours to utility companies prior to starting any excavation as follows:

Kansas One-Call 687-2470

The Contractor must notify the following in case of an emergency:

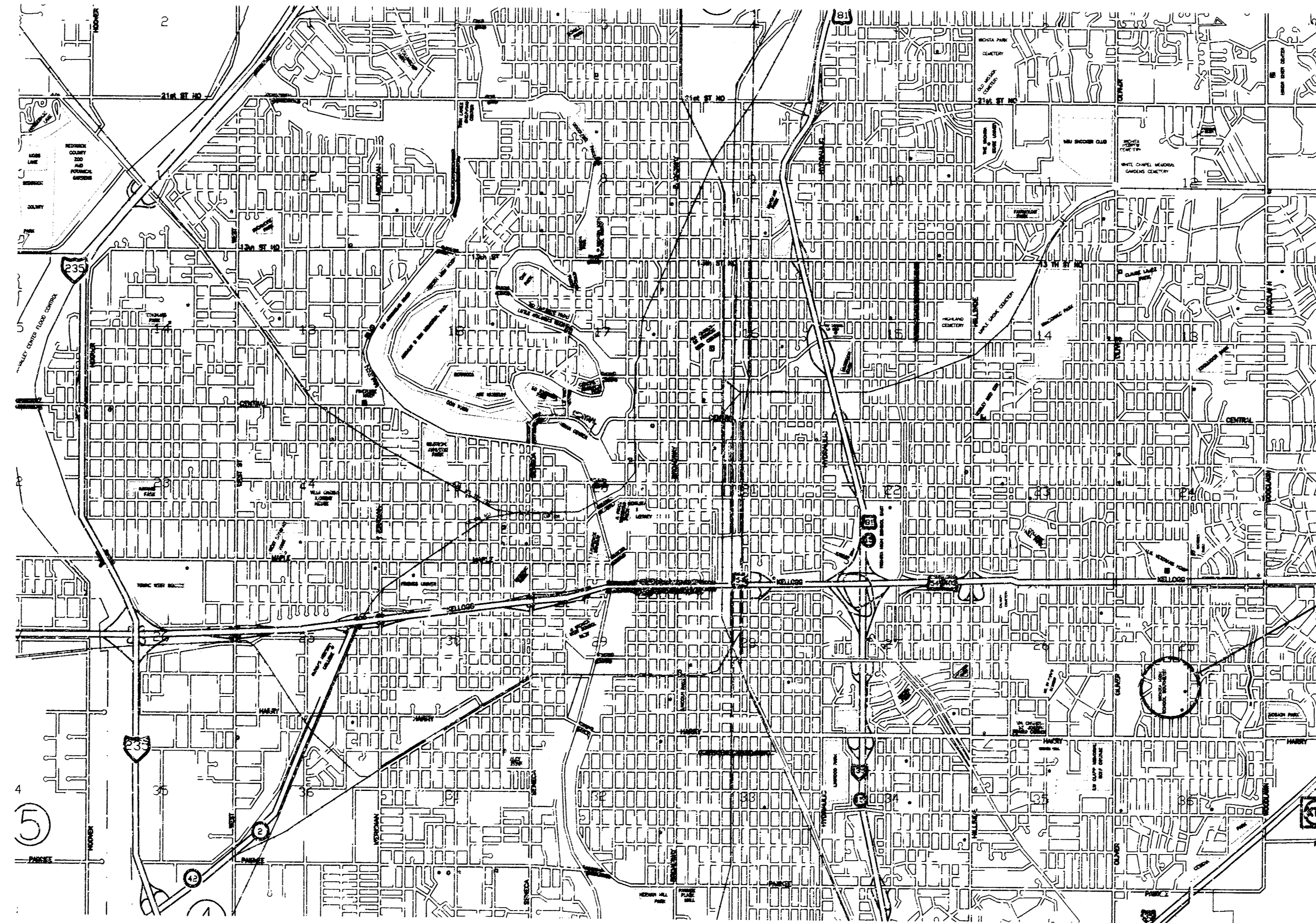
Cox Communications	262-0661
Kansas Gas Service	383-8500
Westar Energy	383-8600
Aquila Energy (Gas)	1-800-303-0357
Southwestern Bell Telephone Company	1-800-285-5313
City of Wichita Water Department	262-6000
City of Wichita Sewer Maintenance	262-6000

2. This project is to be constructed in accordance with City of Wichita Standard Specifications of City Projects, March 1998, and the latest edition of the Policy of Construction on Public Works Projects by Private Contract.

3. Connection of roof drain to storm sewer requires a permit from City of Wichita, Office of Central Inspection.

4. Traffic will not be affected by construction of this project.

5. This storm sewer system to be owned and maintained by U.S.D. 259.



PROJECT AREA



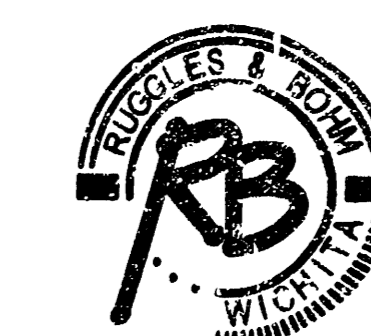
NO SCALE

Booked
RDL
12/4/03
E-7

APPROVED AS NOTED BY CITY ENGINEER OF WICHITA	
Sanitary Sewers	_____
Storm Sewers	<u>VRH 3/27/03</u>
Driveway Approaches	_____
Water Mains	_____
Paving	_____
NOTE TO CONTRACTORS	
Inspection and testing for this project are to be provided by a Licensed Consulting Engineering Firm under contract with the Owner/Developer. Said inspection to be in accordance with the City of Wichita standard construction engineering practices and certified by a Licensed Professional Engineer. No work shall be performed in dedicated easements or public right-of-way by the Contractor without such inspection, nor shall any work be commenced without written authorization by the City Engineer.	

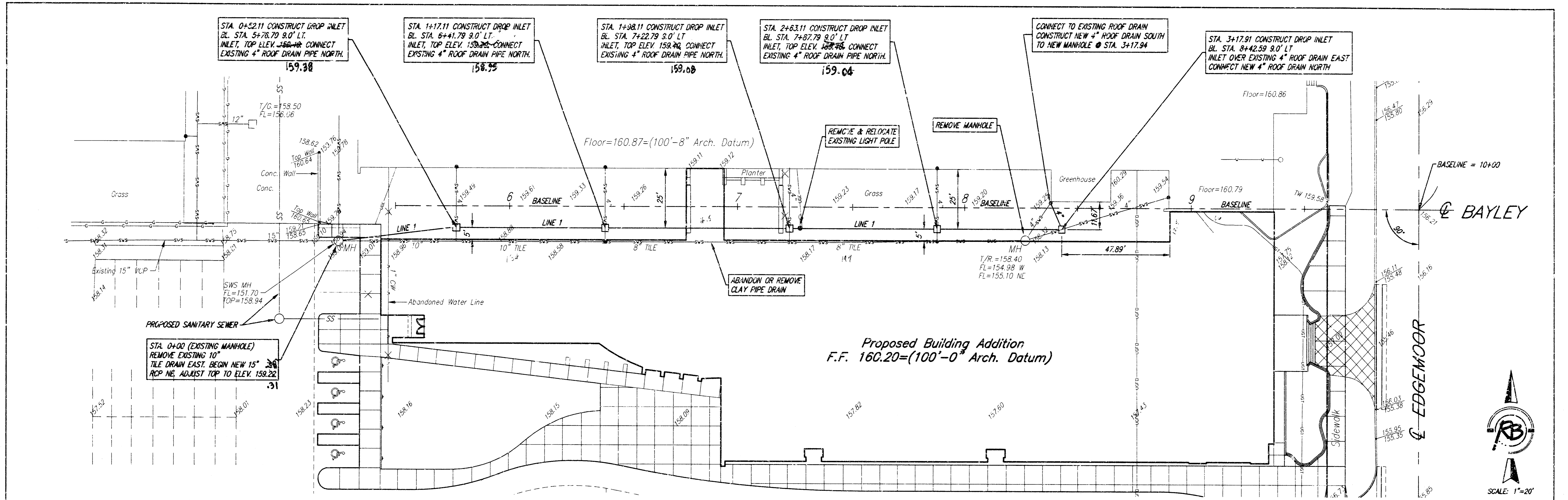


'AS BUILT'
9-24-2003 E R+B



Ruggles & Bohm, P.A.
Engineering, Surveying, Land Planning
924 North Main (316) 264-8008
Wichita, Kansas 67203 (316) 264-4621 fax
www.rbkansas.com E-mail: info@rbkansas.com

CITY OF WICHITA, KANSAS
NEIL D. CABLE - CITY ENGINEER



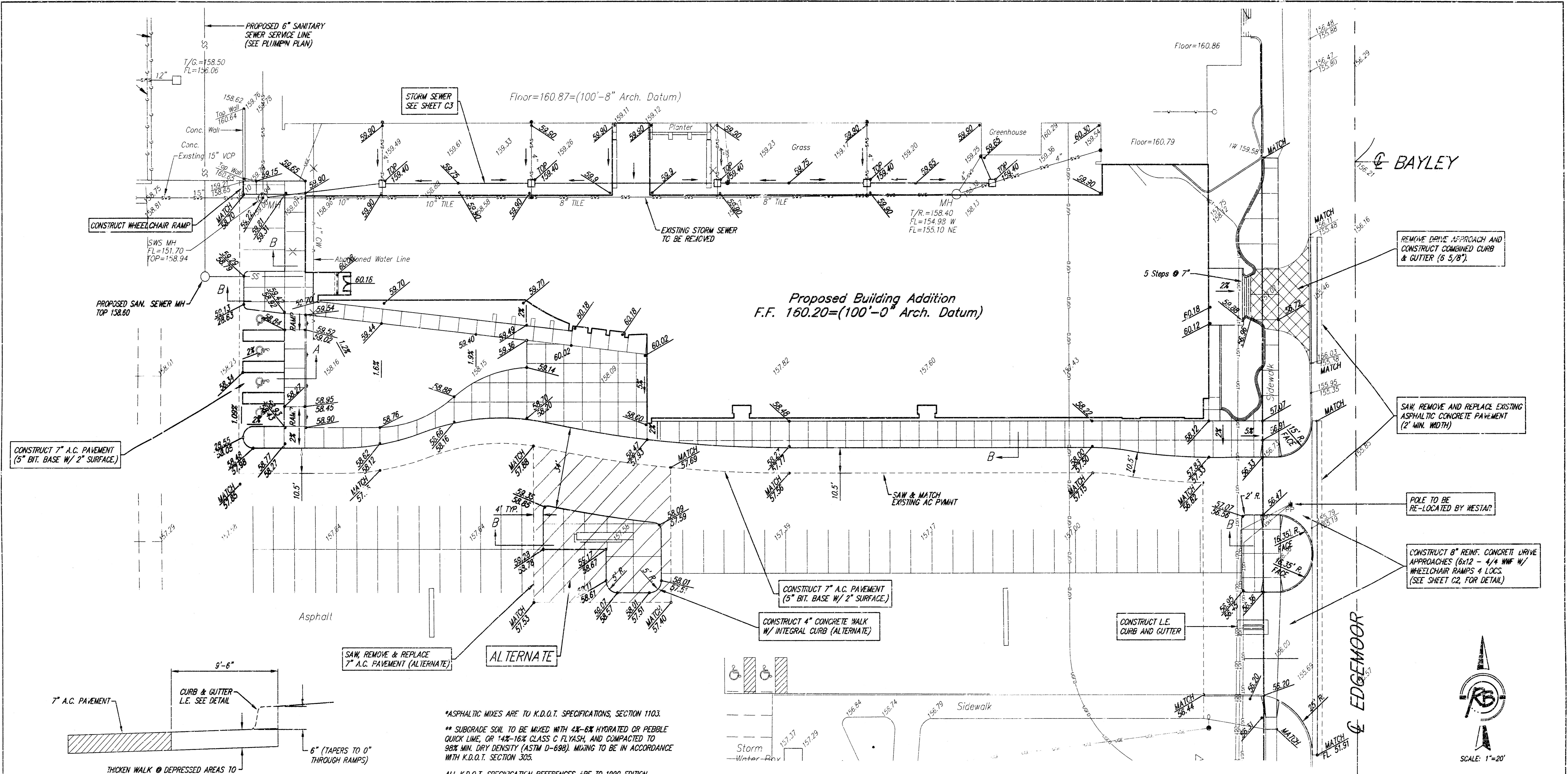
"AS BUILT"
 9-24-2003
 E R+B

Ruggles & Bohm, P.A.
 Engineering, Surveying, Land Planning
 504 North Main
 Wichita, Kansas 67203
 www.rbkansas.com
 (316) 264-8008
 (316) 264-4821 fax
 E-mail: info@rbkansas.com

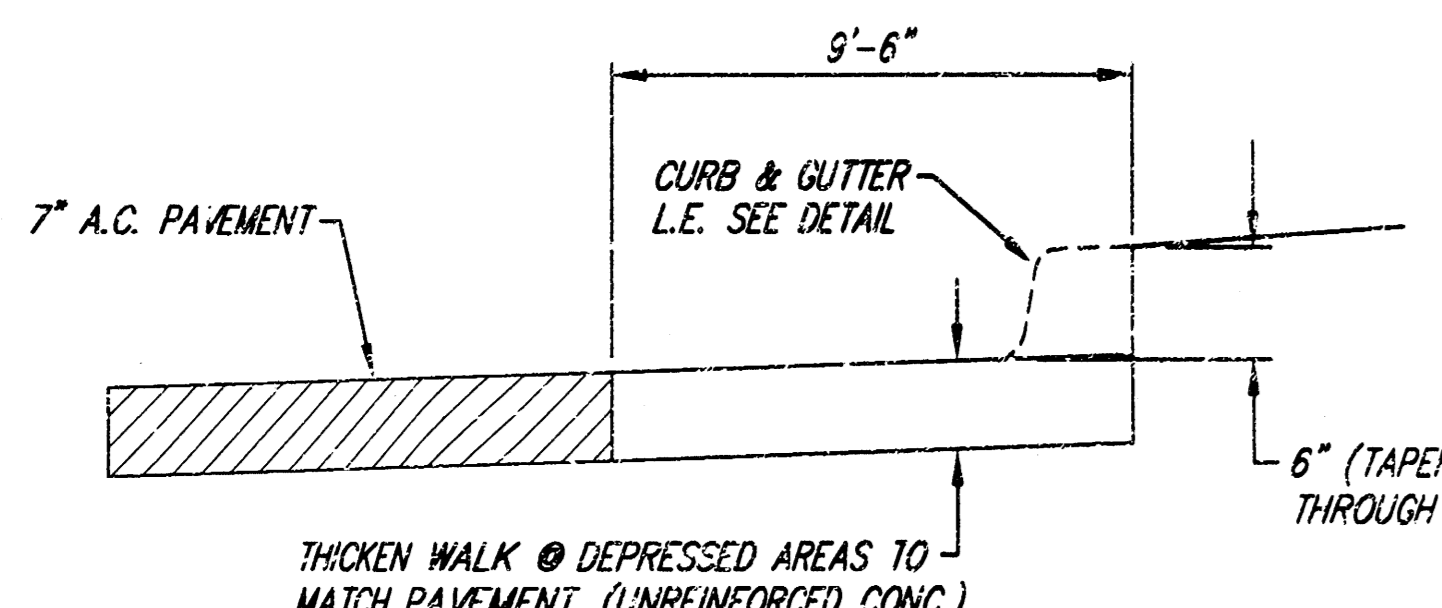
PROJECT NUMBER: 1326 PPS (807861)
 DRAWN BY: BASE (Storm Drain)
 CHECKED BY: EAB
 DATE: Mar. 20, 2003
 REVIEW:

STORM SEWER PLAN & PROFILE
SOUTHEAST HIGH SCHOOL
 WICHITA, KANSAS

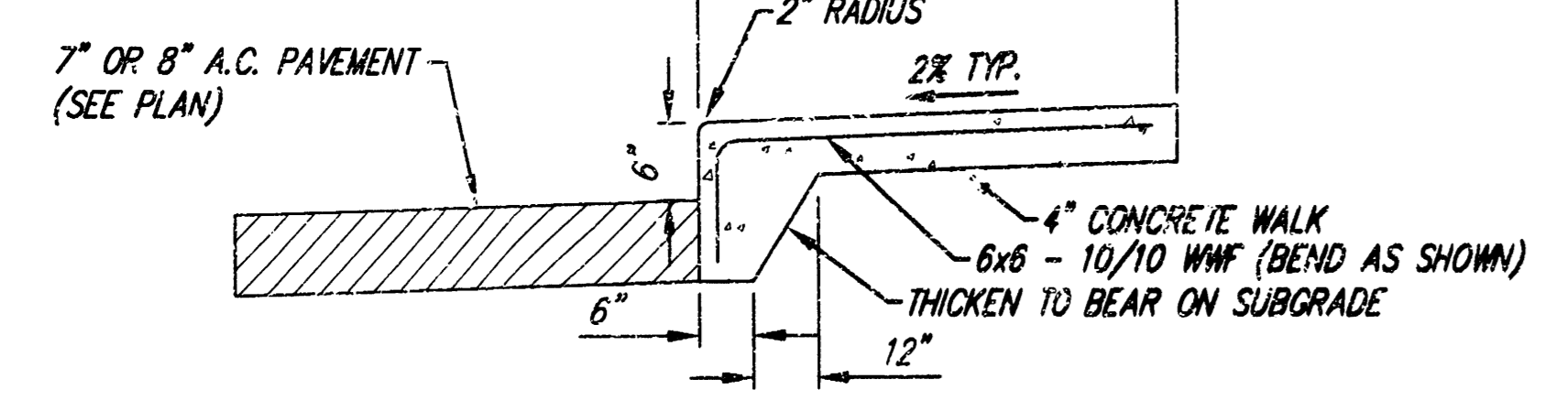
SHEET 2 OF 4



CONSTRUCT 7" A.C. PAVEMENT (5" BIT. BASE W/ 2" SURFACE.)



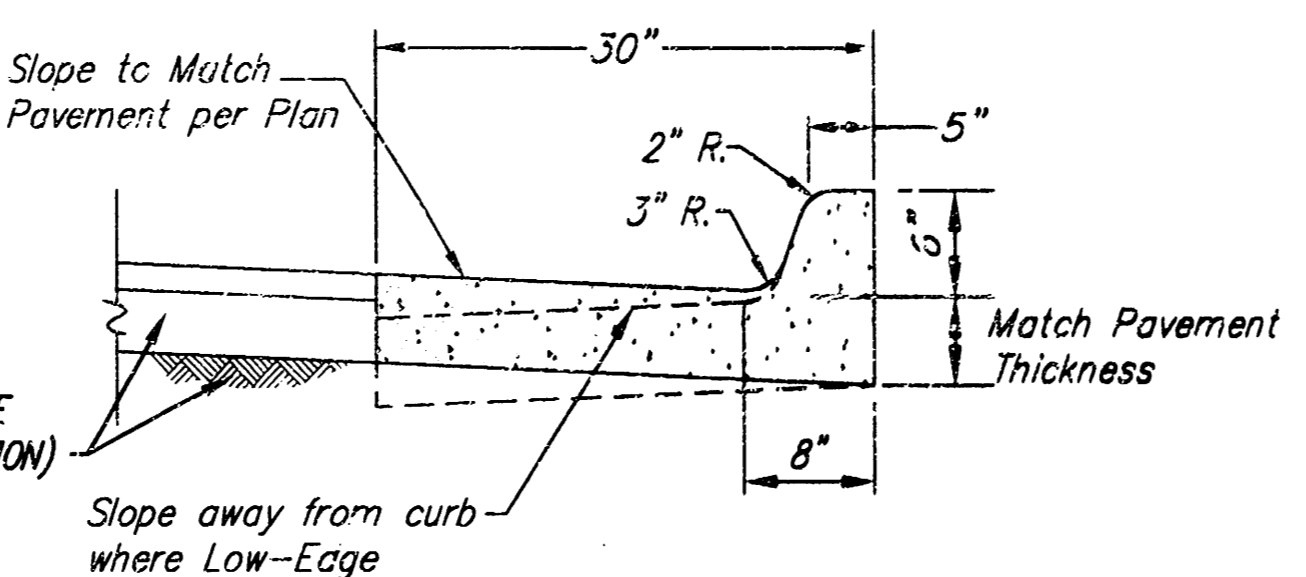
SECTION A
NOT TO SCALE



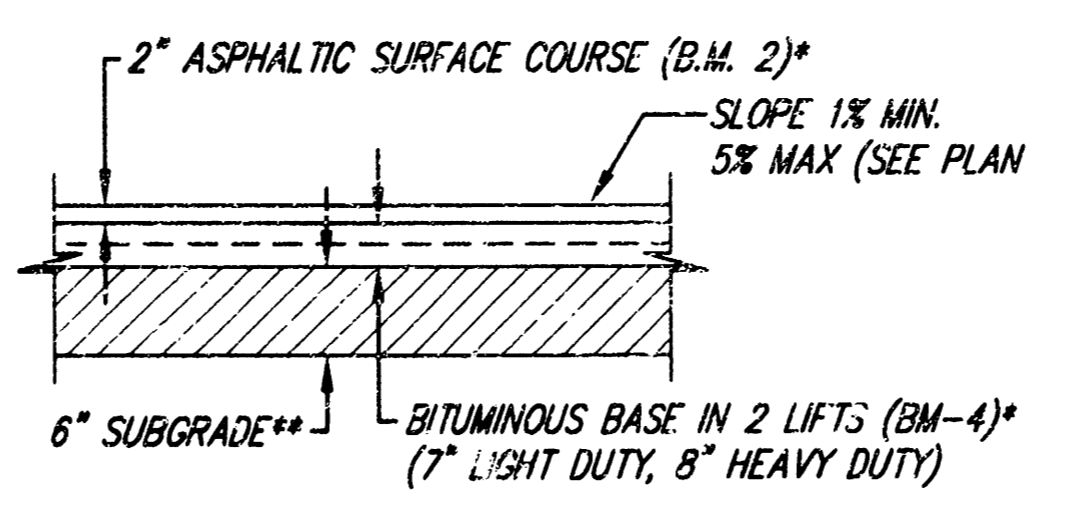
SECTION B
NOT TO SCALE

SAW REMOVE & REPLACE 7" A.C. PAVEMENT (ALTERNATE)

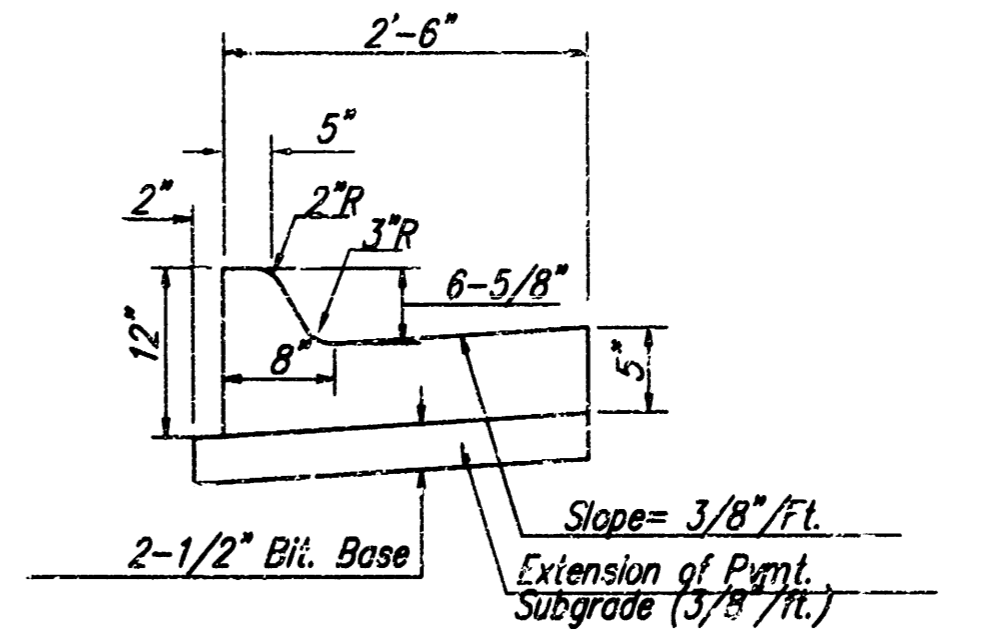
*ASPHALTIC MIXES ARE TO K.D.O.T. SPECIFICATIONS, SECTION 1103.
 ** SUBGRADE SOIL TO BE MIXED WITH 4% - 6% HYDRATED OR PEBBLE QUICK LIME, OR 14% - 16% CLASS C FLYASH, AND COMPACTED TO 98% MIN. DRY DENSITY (ASTM D-698). MIXING TO BE IN ACCORDANCE WITH K.D.O.T. SECTION 305.
 ALL K.D.O.T. SPECIFICATION REFERENCES ARE TO 1990 EDITION.



PARKING LOT CURB & GUTTER DETAIL
NOT TO SCALE

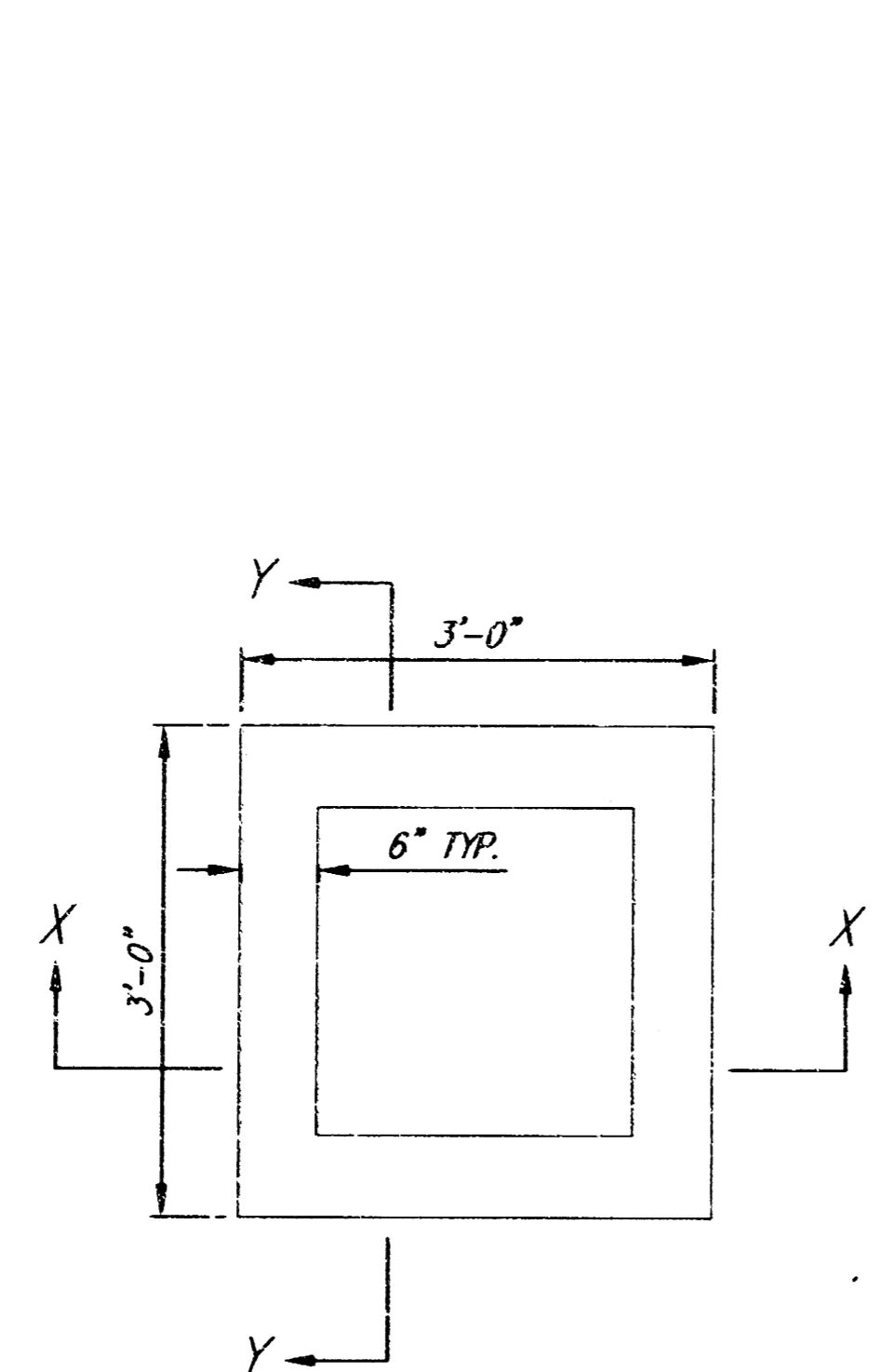


TYPICAL PAVEMENT SECTION
NOT TO SCALE



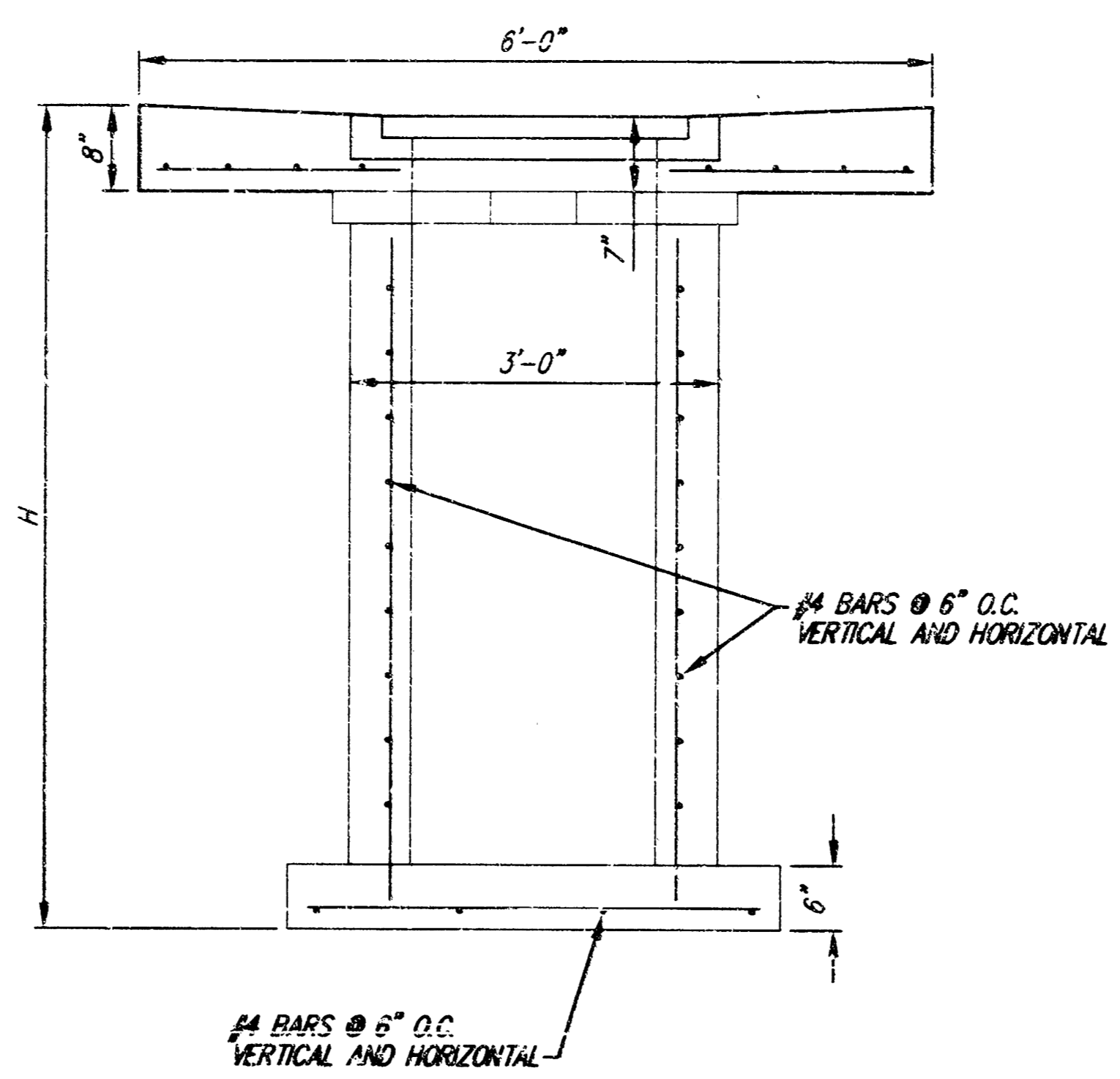
6 5/8" COMBINED CURB & GUTTER
NOT TO SCALE

GRADING PLAN SOUTHEAST HIGH SCHOOL WICHITA, KANSAS		DESIGN TCR DRAWN EJB REVIEW UTILITY DATE Mar. 20, 2003
	Ruggles & Bohm, P.A. Engineering, Surveying, L. and Planning 924 North Main Wichita, Kansas 67203 www.r&bksas.com (316) 264-8008 (316) 264-4621 fax E-mail: info@rbkansas.com	SHEET 3 OF 4
	PROJECT NUMBER 1326 PPS (607861)	DATE Mar. 20, 2003

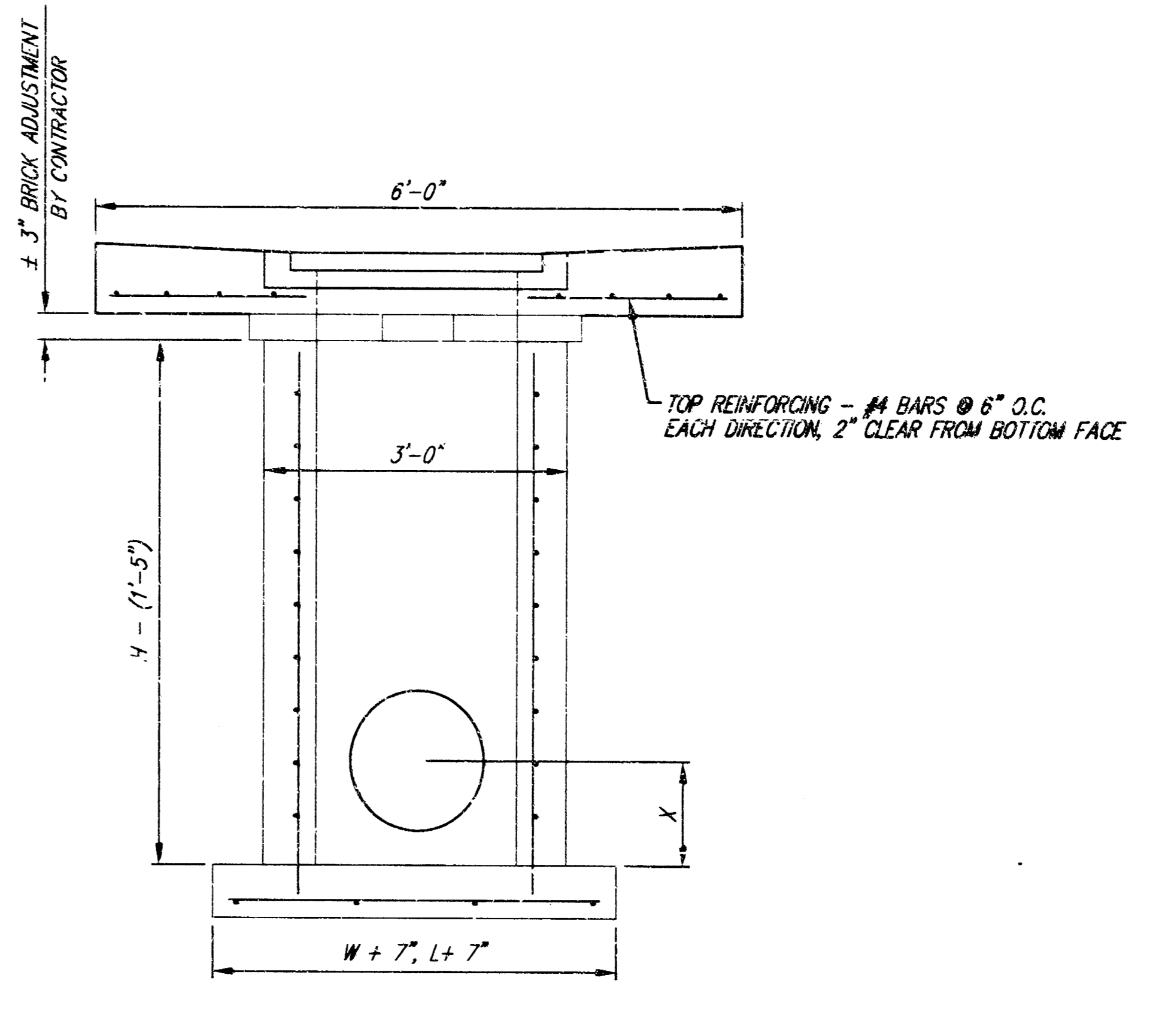


PLAN

NOTE: FRAME AND GRAVE TO BE DEETER FOUNDRY 2410 OR APPROVED EQUAL. INLET MAY BE PRECAST OR CAST-IN-PLACE.



SECTION X-X



SECTION Y-Y

DROP INLET DETAIL

GENERAL NOTES:

- MORTAR USED IN MASONRY CONSTRUCTION SHALL CONTAIN 8 SACKS OF CEMENT PER CUBIC YARD. CONCRETE USED IN INLET WALLS AND BASES SHALL CONFORM TO THE REQUIREMENTS FOR CONCRETE PAVEMENT CONSTRUCTION AS SPECIFIED IN THE CITY STANDARD PAVING SPECIFICATIONS, USING CITY CONCRETE PAVEMENT MIX WITHOUT AIR ENTRAINING ADMIXTURE. MORTAR SHALL BE PLACED AROUND THE INLET FRAME AS SHOWN ON THE DRAWINGS WHEN INLETS ARE CONSTRUCTED IN UNPAVED AREAS. COMPLETED INLET SHALL BE WITHOUT LEAKS AND WATER TIGHT.
- THE FLOORS OF ALL INLETS SHALL BE SHAPED WITH FLOW CHANNELS SUCH THAT THE INLETS WILL BE SELF-CLEANING. USING 8-SACK SAND MIX CONCRETE. FLOW CHANNELS SHALL BE FORMED TO MATCH THE BOTTOM HALVES OF THE INFLOWING PIPES AND THE OUTFLOWING PIPE. INLET FLOORS SHALL HAVE SLOPES OF 3 INCHES PER FOOT IN THE AREAS OUTSIDE OF THE FLOW CHANNELS SLOPED TOWARD THE FLOW CHANNELS.
- INLET COVER CASTINGS AND INLET FRAME CASTINGS SHALL CONFORM TO THE REQUIREMENTS AS INDICATED IN THE STANDARD SPECIFICATIONS AND AS SHOWN IN THE STANDARD DETAIL DRAWING.
- THE ENDS OF ALL PIPES IN INLETS SHALL BE CUT OFF FLUSH WITH THE INSIDE FACE OF INLET WALL.

DROP INLET DETAIL SOUTHEAST HIGH SCHOOL WICHITA, KANSAS			
	Ruggles & Bohm, P.A. Engineering, Surveying, Land Planning		DESIGN TCR
	924 North Main Wichita, Kansas 67203 www.rbkansas.com		(316) 264-8008 (316) 264-4621 fax E-mail: info@rbkansas.com
DRAWING FILE BASE [Details]	PROJECT NUMBER 1326 PPS (607861)	DATE Mar. 20, 2003	SHEET 4 OF 4