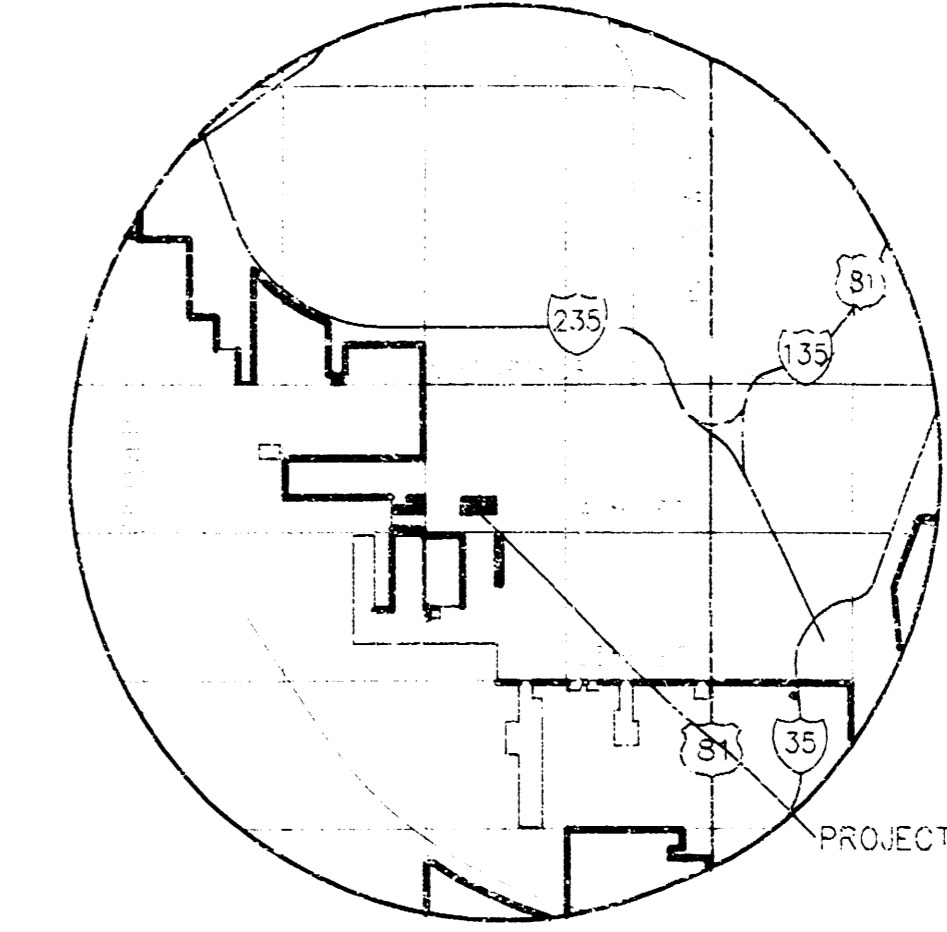




411 N. WEBB ROAD
WICHITA, KS 67206
316-684-8600



APPROVED AS NOTED
BY CITY ENGINEER OF WICHITA

STORM SEWERS VRH 5/1/03

NOTE TO CONTRACTOR
INSPECTION AND TESTING FOR THIS PROJECT IS TO BE PROVIDED FOR BY A LICENSED CONSULTING ENGINEERING FIRM UNDER CONTRACT WITH THE CONTRACTOR. SAID INSPECTION TO BE IN ACCORDANCE WITH THE CITY OF WICHITA STANDARD CONSTRUCTION ENGINEERING PRACTICES AND CERTIFIED BY A LICENSED PROFESSIONAL ENGINEER. NO WORK SHALL BE PERFORMED IN DEDICATED EASEMENTS OR THE PUBLIC RIGHT-OF-WAY BY THE CONTRACTOR WITHOUT SUCH INSPECTION NOR SHALL ANY WORK BE COMMENCED IN DEDICATED EASEMENTS OR PUBLIC RIGHT-OF-WAY WITHOUT WRITTEN AUTHORIZATION BY THE CITY ENGINEER.

BENCHMARKS

PT.	NORTHING	EASTING
BM #1	N 1656222.50	E 1641945.38
BM #2	N 1656815.50	E 1641947.30
BM #3	N 1656812.53	E 1642305.91
CP1	N 1657923.60	E 1642288.74
CP2	N 1657900.81	E 1641007.39
CP3	N 1656530.61	E 1640997.32
CP4	N 1656562.31	E 1642279.10

GENERAL NOTES

- UNLESS SHOWN OR OTHERWISE STATED ON THESE DRAWINGS, MATERIALS AND CONSTRUCTION SHALL BE IN ACCORDANCE WITH THE CITY OF WICHITA STANDARD SPECIFICATIONS.
- THE TOPS OF INLETS AND MANHOLES AS NOTED ON THE PLANS MAY VARY 30 AS TO MEET PROPOSED TOP OF CURB ELEVATIONS OR PAVEMENT ELEVATIONS. THE FIELD ENGINEER SHALL LOCATE INLETS AND MANHOLES WITH REFERENCE TO PROPOSED PAVING PLANS OF THE PERTINENT STREETS.
- ALL CONCRETE SHALL BE STANDARD PAVING MIX UNLESS OTHERWISE NOTED.
- THE CONTRACTOR SHALL BE RESPONSIBLE FOR PRELIMINARY PROPERTY IRONS. THE CONTRACTOR SHALL BE REQUIRED TO RE-ESTABLISH ANY PROPERTY IRONS WHICH ARE DAMAGED OR DESTROYED BY HIS CONSTRUCTION OPERATIONS. SUCH IRONS SHALL BE RE-ESTABLISHED BY A LICENSED LAND SURVEYOR IN ACCORDANCE WITH STATE LAWS.
- TREES TO BE REMOVED ARE MARKED WITH AN 'X'. ALL TREES WHICH IN THE OPINION OF THE FIELD ENGINEER CAN BE SAVED, SHALL BE SAVED.
- CONTRACTOR SHALL NOTIFY UTILITY COMPANIES OF CONSTRUCTION SCHEDULING.
- EXISTING UTILITIES AND THEIR LOCATIONS AS SHOWN ON THE PLANS REPRESENT THE BEST INFORMATION OBTAINABLE. FIELD DESIGN, LOCATION INFORMATION HAS BEEN OBTAINED FROM THE VARIOUS COMPANIES AND IS EITHER FROM COMPANY UTILITY DRAWINGS OR COMPANY PROVIDED FIELD LOCATIONS. THE PLAN LOCATIONS SHOWN ARE NOT GUARANTEED. ADDITIONAL EXISTING UTILITIES MAY ALSO BE ENCOUNTERED.
- CONTRACTOR WILL BE REQUIRED TO PROVIDE A MINIMUM ADVANCE NOTICE OF SEVENTY-TWO (72) HOURS TO UTILITY COMPANIES TO STARTING ANY EXCAVATION AS FOLLOWS:
KANSAS ONE-CALL 800-344-7233 OR 687-2470 (LOCAL WICHITA)
THE CONTRACTOR MUST NOTIFY THE FOLLOWING IN CASE OF EMERGENCY:
COX COMMUNICATIONS (CABLE) 262-0681
WESTAR (ELECTRIC) 291-6512
KANSAS GAS SERVICE (GAS) 632-3101
SBC (TELEPHONE) 800-870-8399
CITY OF WICHITA WATER & SEWER 282-6000
AQUILA (GAS) 946-0036
- MATERIAL FROM THE REMOVAL OF MISCELLANEOUS STRUCTURES AND EXCESS EXCAVATION WHICH IS TO BE WASTED SHALL BE DISPOSED OF ON SITES TO BE PROVIDED BY THE CONTRACTOR. THESE SITES SHALL BE APPROVED BY THE ENGINEER AS TO SUITABILITY, APPEARANCE AND SITE LOCATION. LOCATIONS THAT, IN THE OPINION OF THE ENGINEER, WILL LEAVE IN UNSIGHTLY APPEARANCE WILL NOT BE APPROVED. ALL DISPOSAL SITES MUST BE APPROVED BY THE KANSAS DEPARTMENT OF HEALTH AND ENVIRONMENT. MATERIAL EITHER STOCKPILED OR DISPOSED OF IN A FLOOD PLAIN WOULD REQUIRE A KANSAS STATE BOARD OF AGRICULTURE PERMIT. ANY MATERIAL DUMPED IN WATERS OF THE UNITED STATES OR WETLANDS IS SUBJECT TO U.S. CORPS OF ENGINEERS PERMITTING REGULATIONS. ANY MATERIAL BURIED OR STOCKPILED BEYOND APPROVED CONSTRUCTION LIMITS WOULD REQUIRE ADDITIONAL ARCHAEOLOGICAL INVESTIGATIONS UNLESS BURIED IN A PREVIOUSLY APPROVED BORROW LOCATION.
- CONTRACTOR SHALL RESEED AND MULCH ALL DISTURBED AREAS. COST SHALL BE CONSIDERED SUBSIDIARY TO SITE RESTORATION.

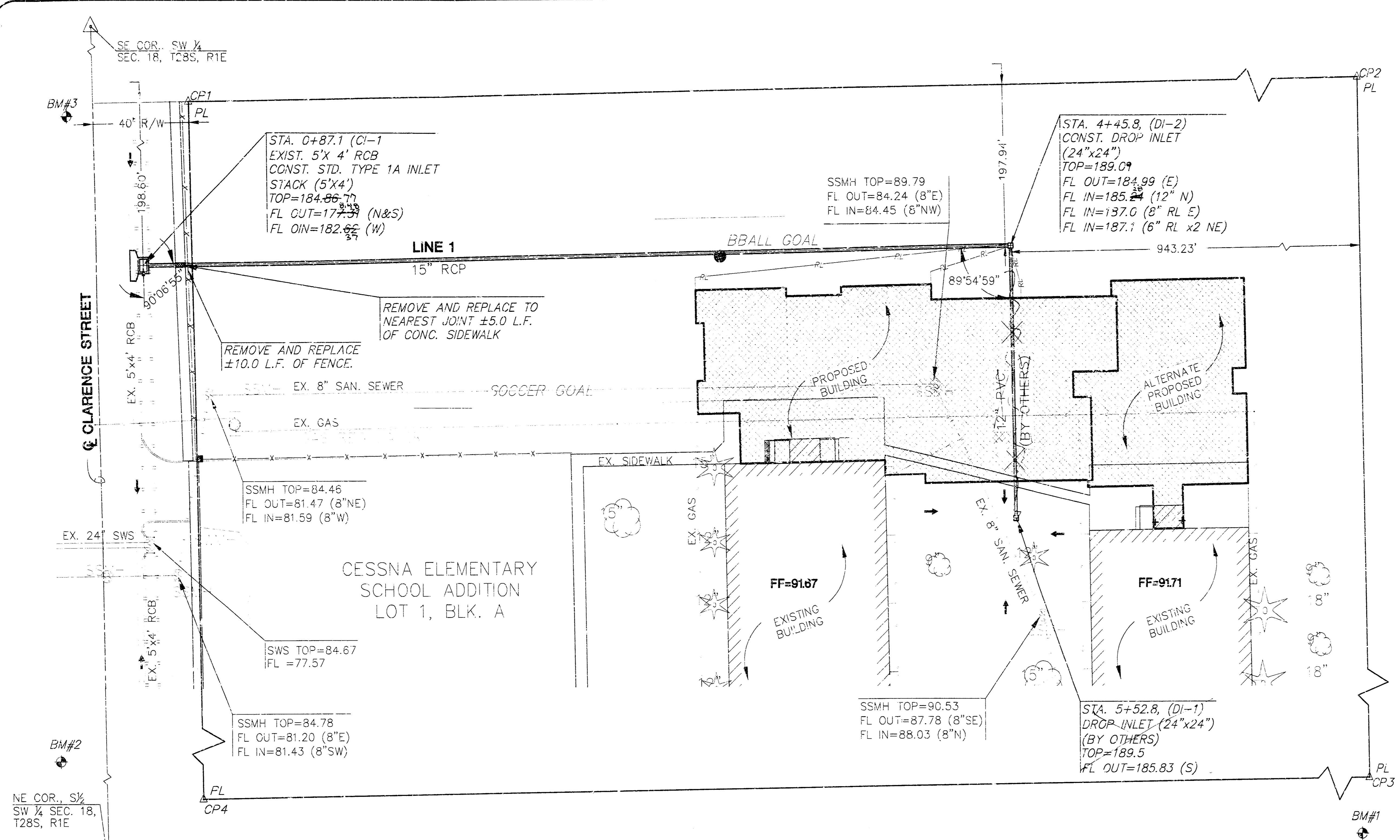
AS-BUILT
Date
Signature

booked
E-6
9/30/03
RDJ

**CONSTRUCTION DOCUMENTS
RENOVATION AND ADDITION TO
CESSNA ELEMENTARY**

SITE CIVIL UTILITY PLAN

sheet
UTILITIES PLAN

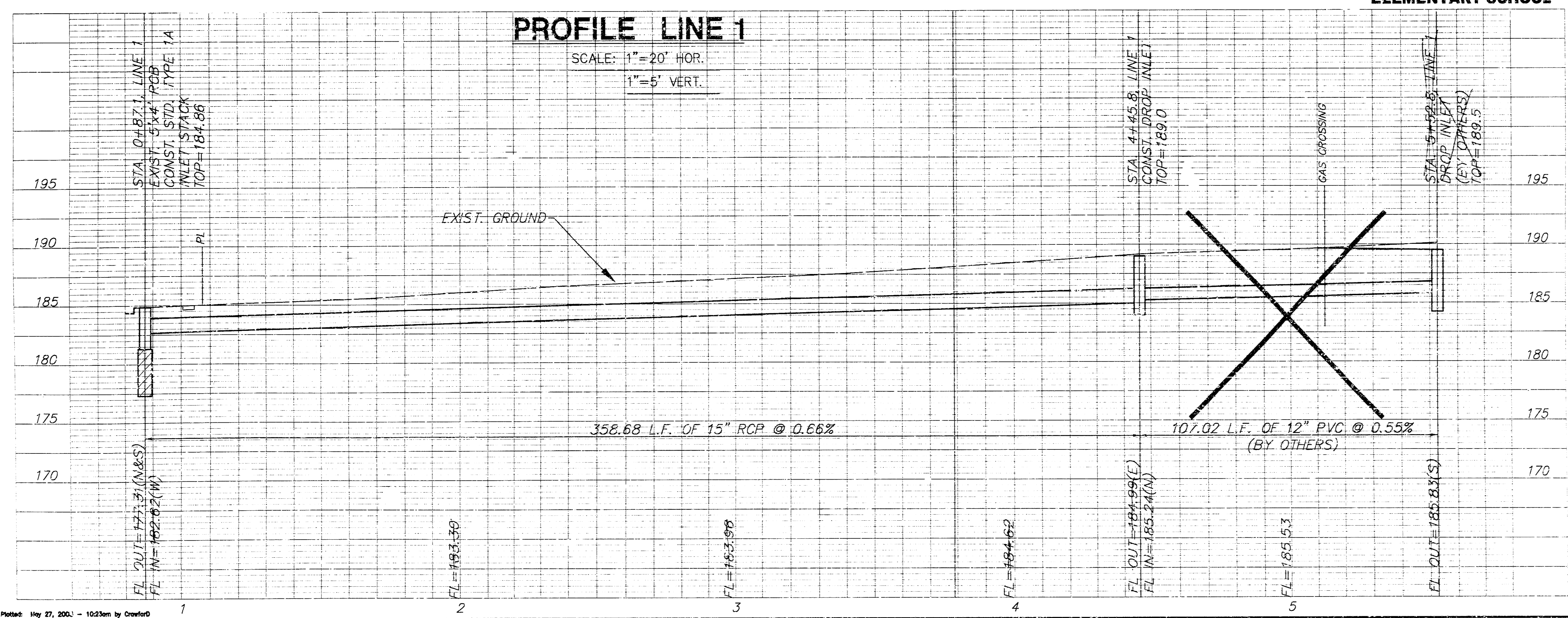


PLAN LINE 1

SCALE: 1"=20'

NOTE: RAINLEADER LINES FROM STA. 4+45.75 THRU STA. 5+52.77 TO BE INSTALLED BY OTHERS SUBJECT TO C.O.I. REVIEW.

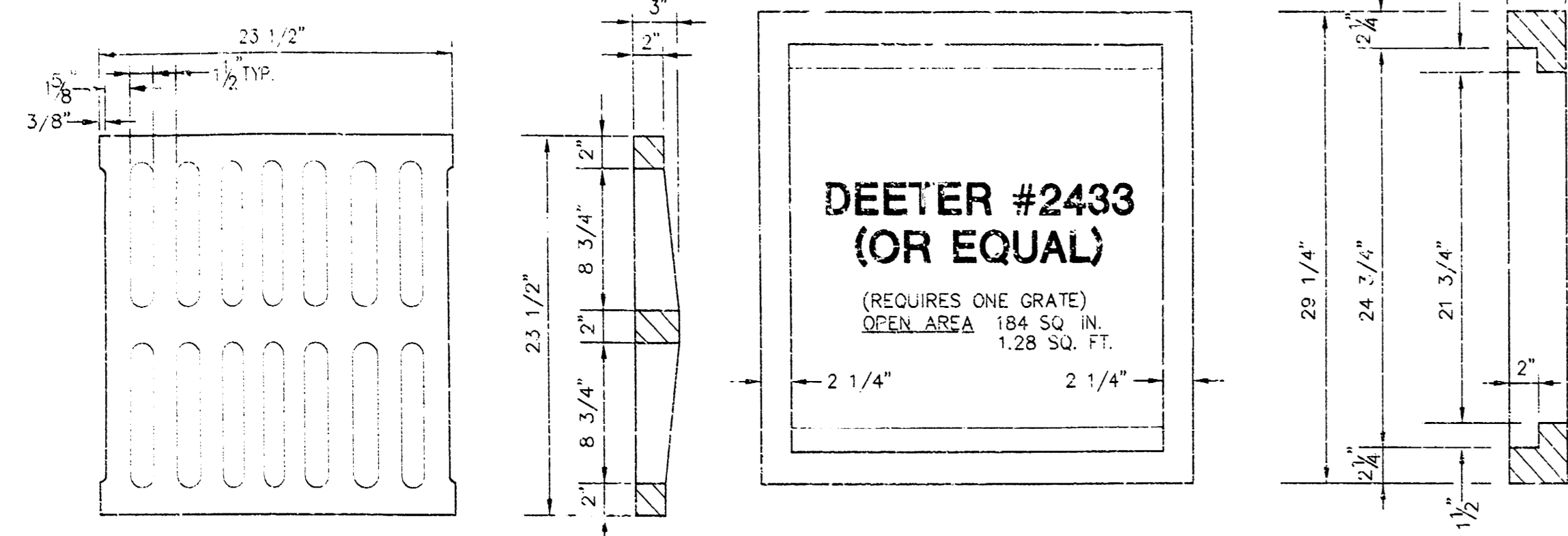
**PROJECT NO. 1342PPS (607861)
PRIVATE STORM WATER
SEWER TO SERVE
LOT 1, BLOCK A, CESSNA
ELEMENTARY SCHOOL**



PROFILE LINE 1

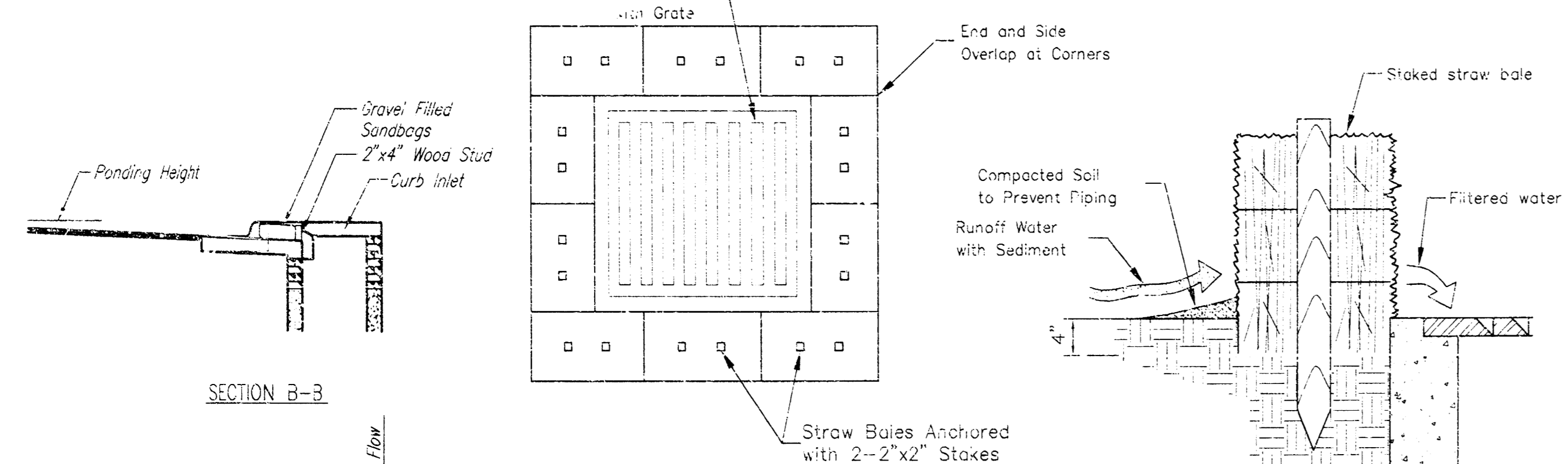
SCALE: 1"=20' HOR.
1"=5' VERT.

NOTE: GRATES SHALL BE IMPRINTED ON THE TOP SURFACE WITH CITY OF WICHITA LOGO. LETTERS AT LEAST 1" IN HEIGHT. OTHER MARKING METHODS MAY BE USED ONLY IF APPROVED BY THE ENGINEER.

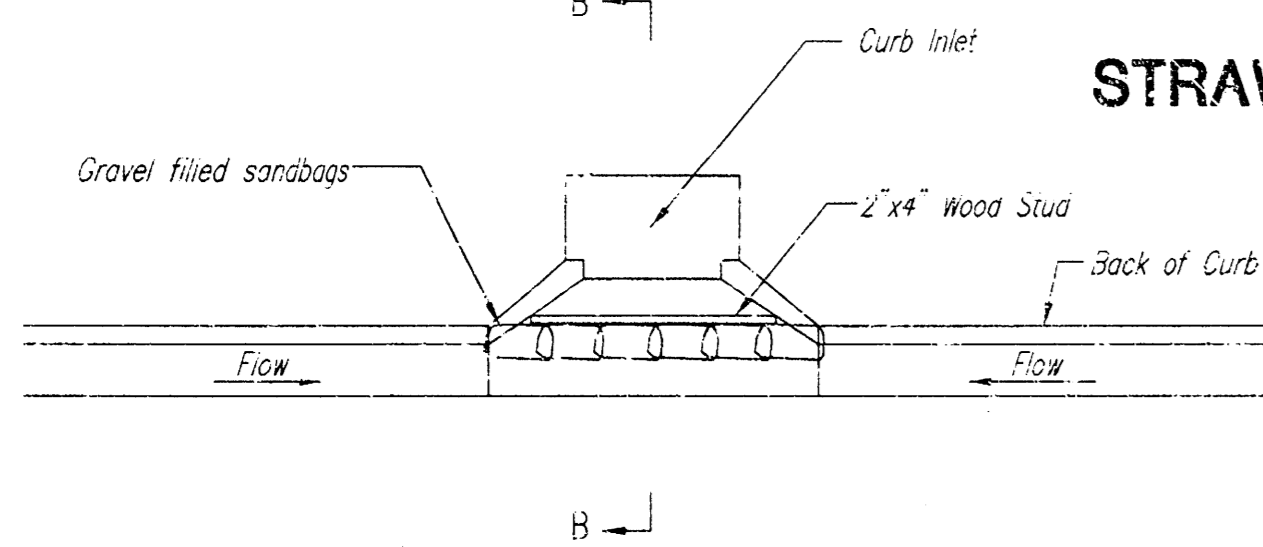


24"x24" GRATE DETAIL

SINGLE 24"x24" FRAME DETAIL



STRAW BALE DROP INLET SEDIMENT BARRIER



CURB INLET SANDBAG FILTERS (INLET PROTECTION)

NOTE: Other types of curb inlet protection may be approved by the City so long as equal protection is provided.

CURB SEDIMENT TRAPS

When inlets are located on streets having a grade (i.e., sump conditions do not exist), installing gravel (or sand) bags in the gutter flow line to create small sediment traps can be considered. Gravel bags are recommended over sand bags to allow for drainage.

If the spacing between bags becomes too large, little sediment may be trapped. Spacing of bags should be completed using the table or graph that illustrates placement distances based upon street slope. When installed in the gutter, bag tops must be lower than the sidewalk.

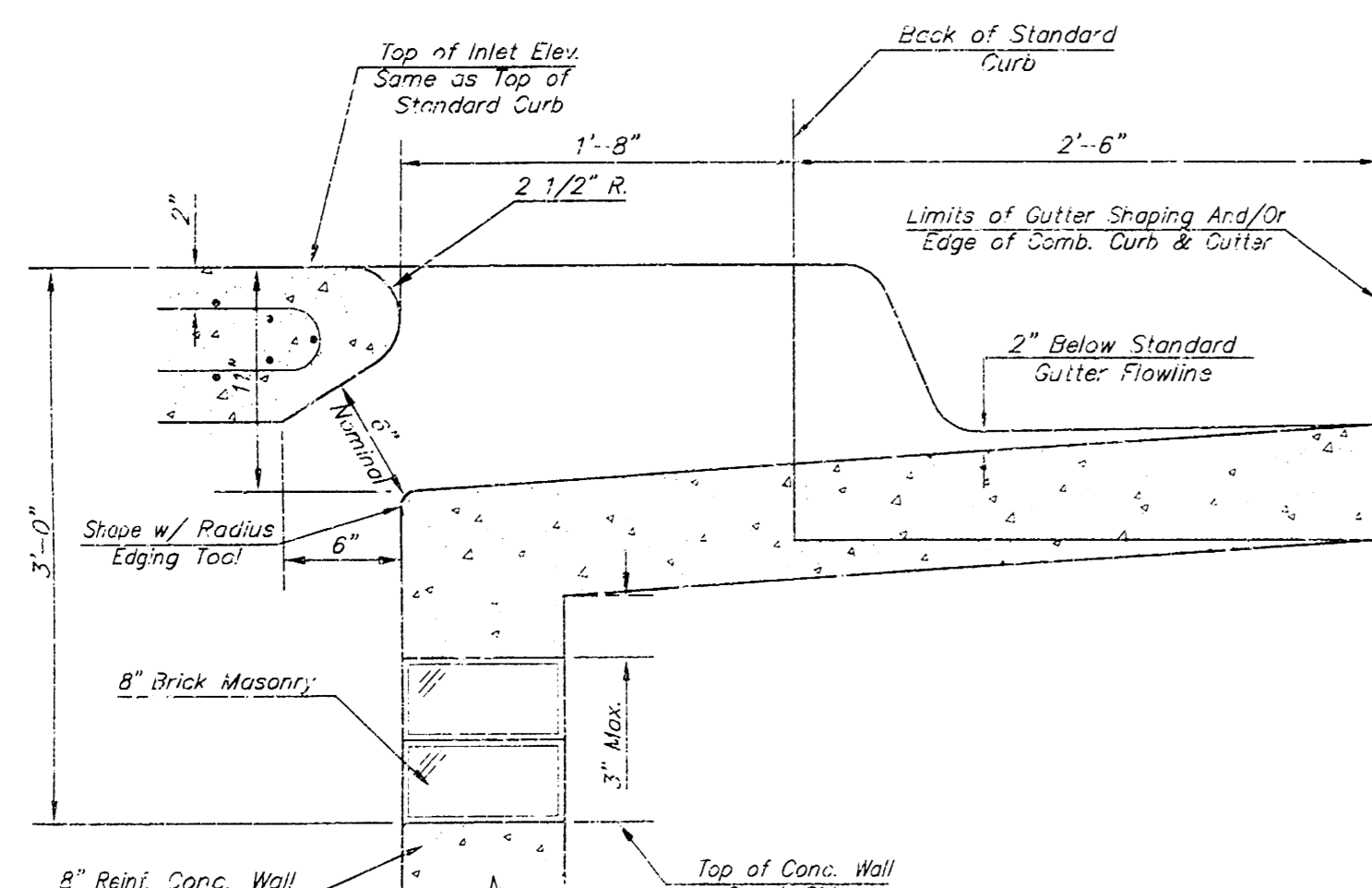
Spacing:

Gravel bags are to be placed according to street grades using the following table or graph that appears below.

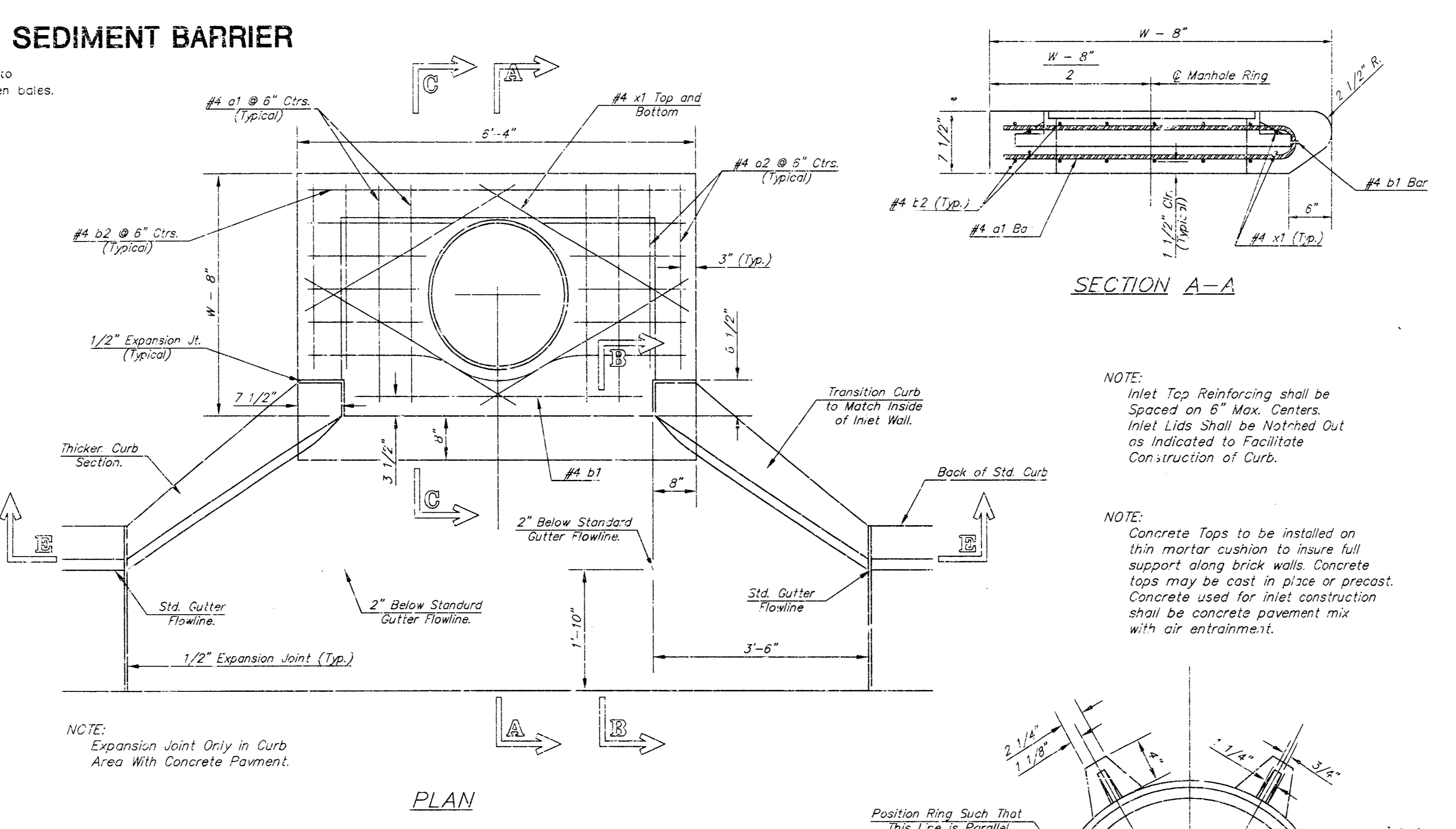
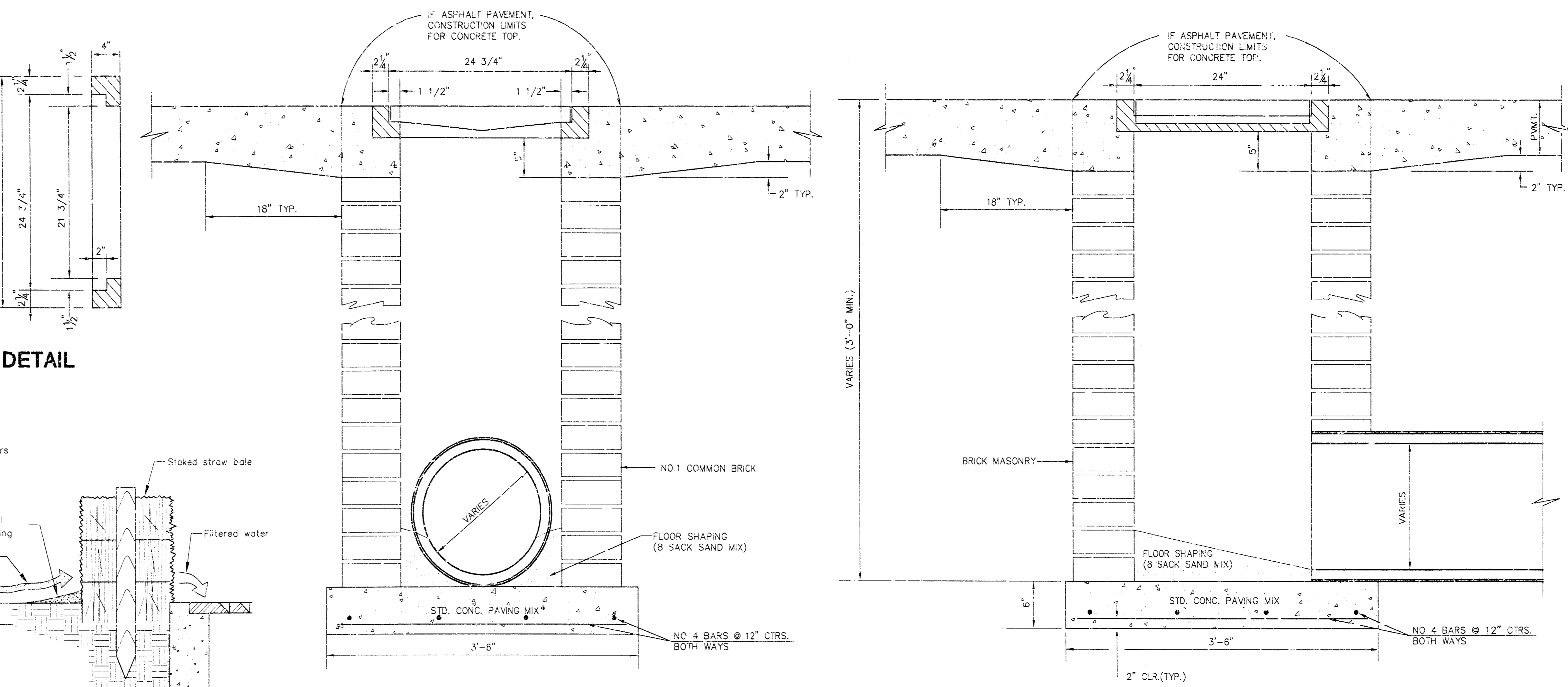
GRADE (%)	SPACING (FEET)
0.5	75
1.0	45
2.0	18
3.0	12
4.0	9
5.0	6

Maintenance:

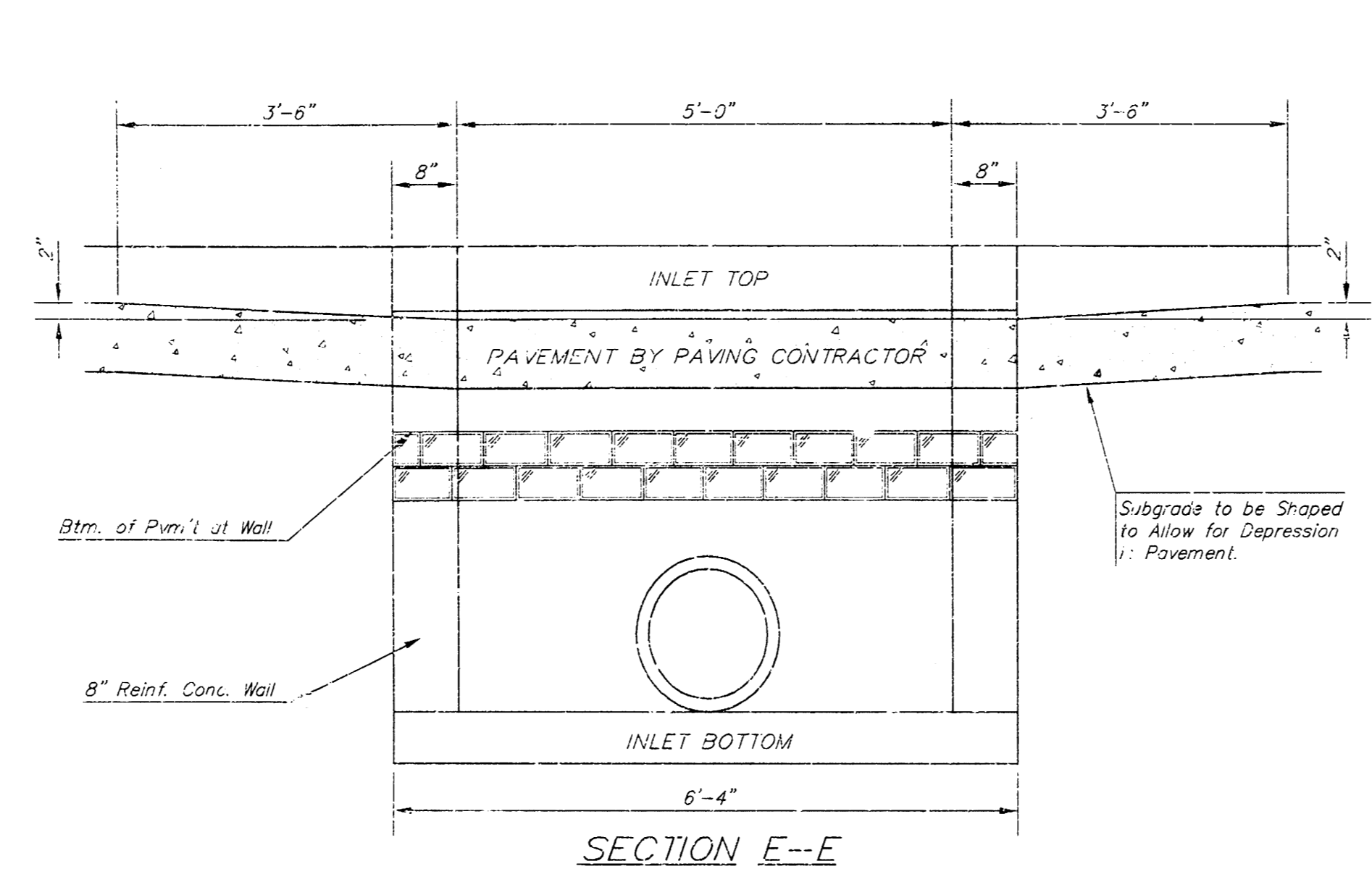
Collected sediment shall be removed after every runoff event. Bags that are destroyed by vehicular traffic or through natural deterioration are to be immediately replaced.



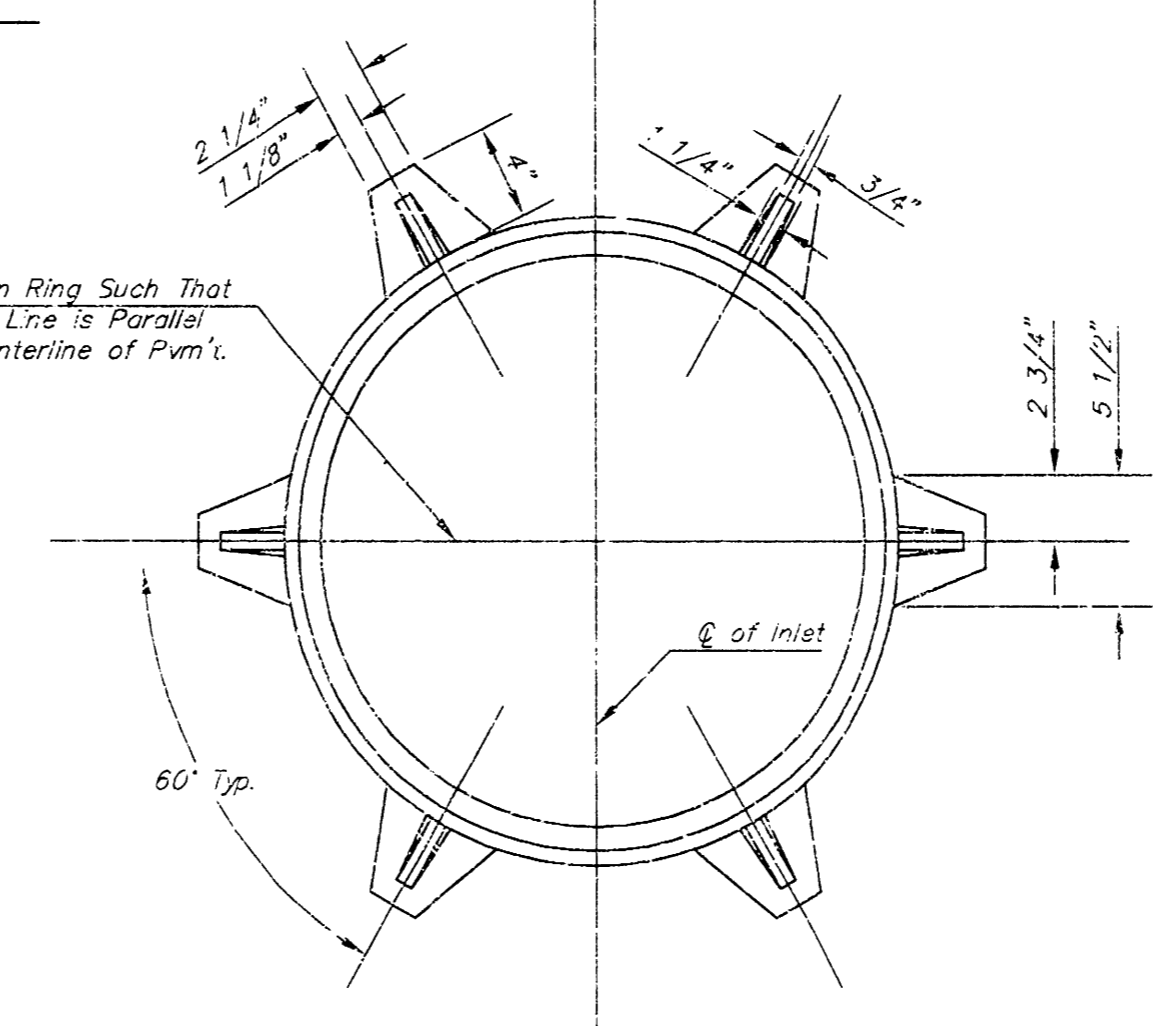
SECTION B-B



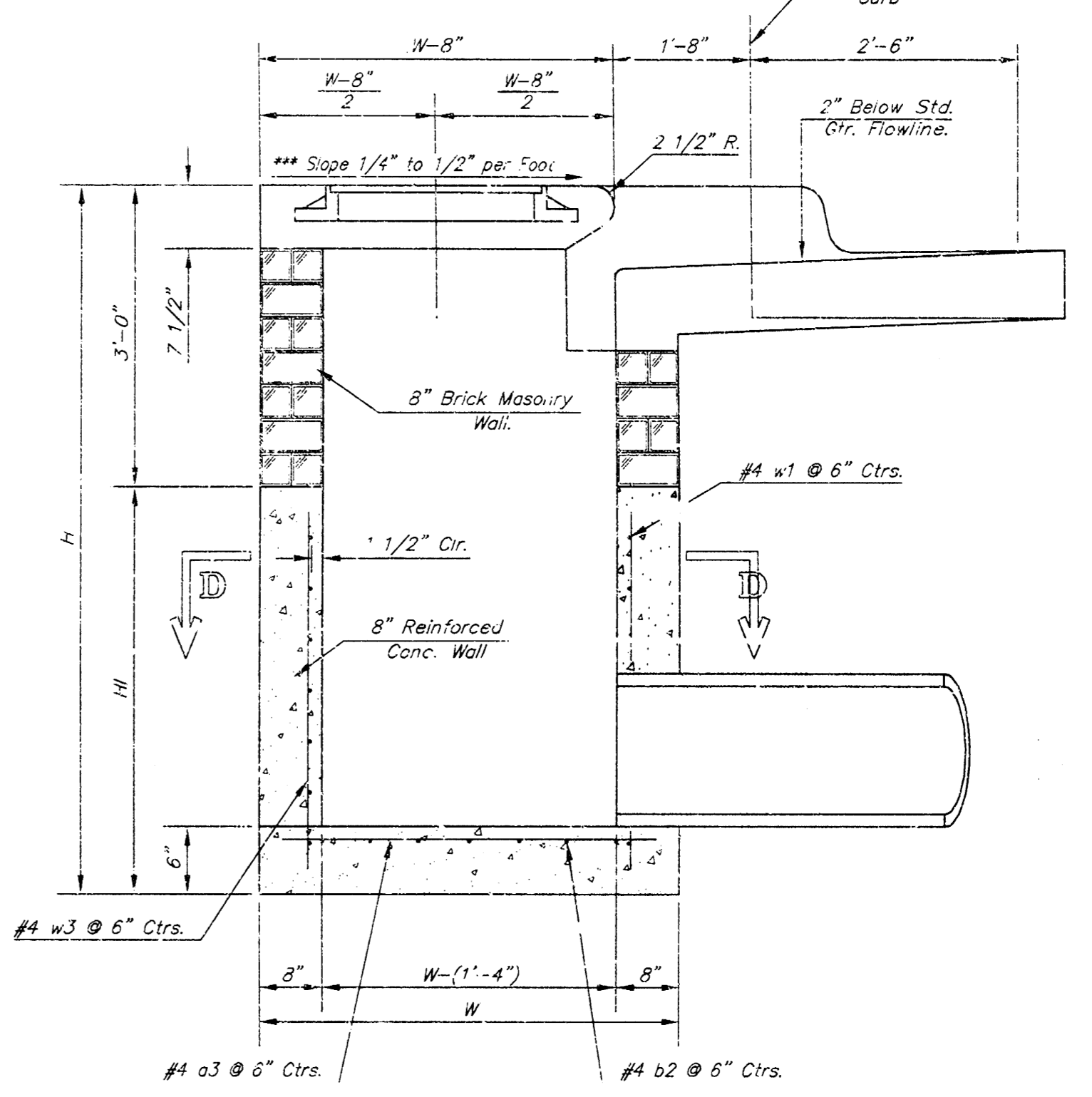
PLAN



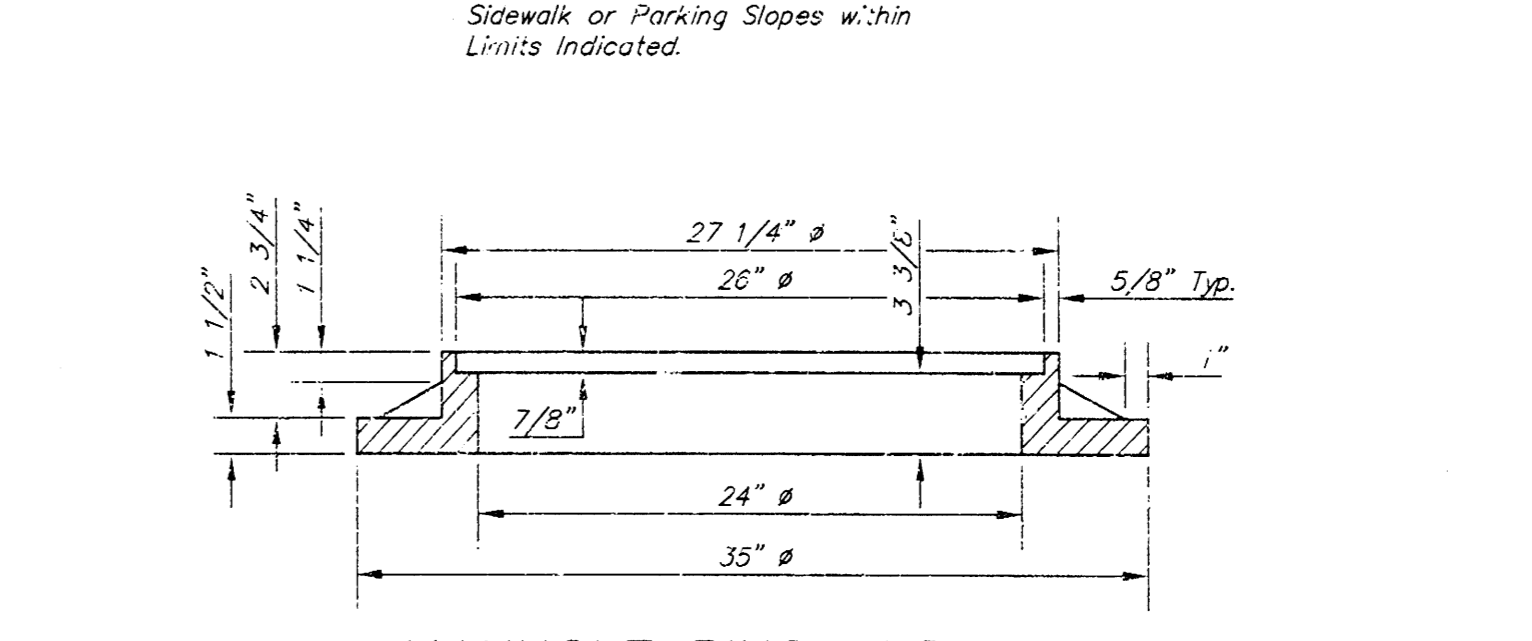
SECTION E-E



BENDING DIAGRAM



SECTION A-A



MANHOLE RING AND COVER

Weight = 180 Lbs.
*See City of Wichita Standard Manhole Ring and Cover Detail Sheet for Cover Details to be Used With Inlet Frame.

PROJECT NO. 1342PPS (607861)
STORM WATER SEWER
TO SERVE
LOT 1, BLOCK A
CESSNA ELEMENTARY SCHOOL

DATE 02-25-03



14371

Architectural Innovations, P.C.

project no. 0214

CONSTRUCTION DOCUMENTS
RENOVATION AND ADDITION TO
CESSNA ELEMENTARY
2101 W. 45TH STREET SOUTH
WICHITA, KS 67214
MKS BLDG
02-25-03

SITE CIVIL UTILITY DETAILS
sheet
SU2.1
UTILITIES
PLAN