

STORM WATER SEWER

to serve

ONE KELLOGG PLACE 2ND ADDITION

LOT 3, BLOCK A

CITY OF WICHITA, KANSAS

NEIL CABLE, P.E. City Engineer

Private Project Number

1352 PPS (607861)

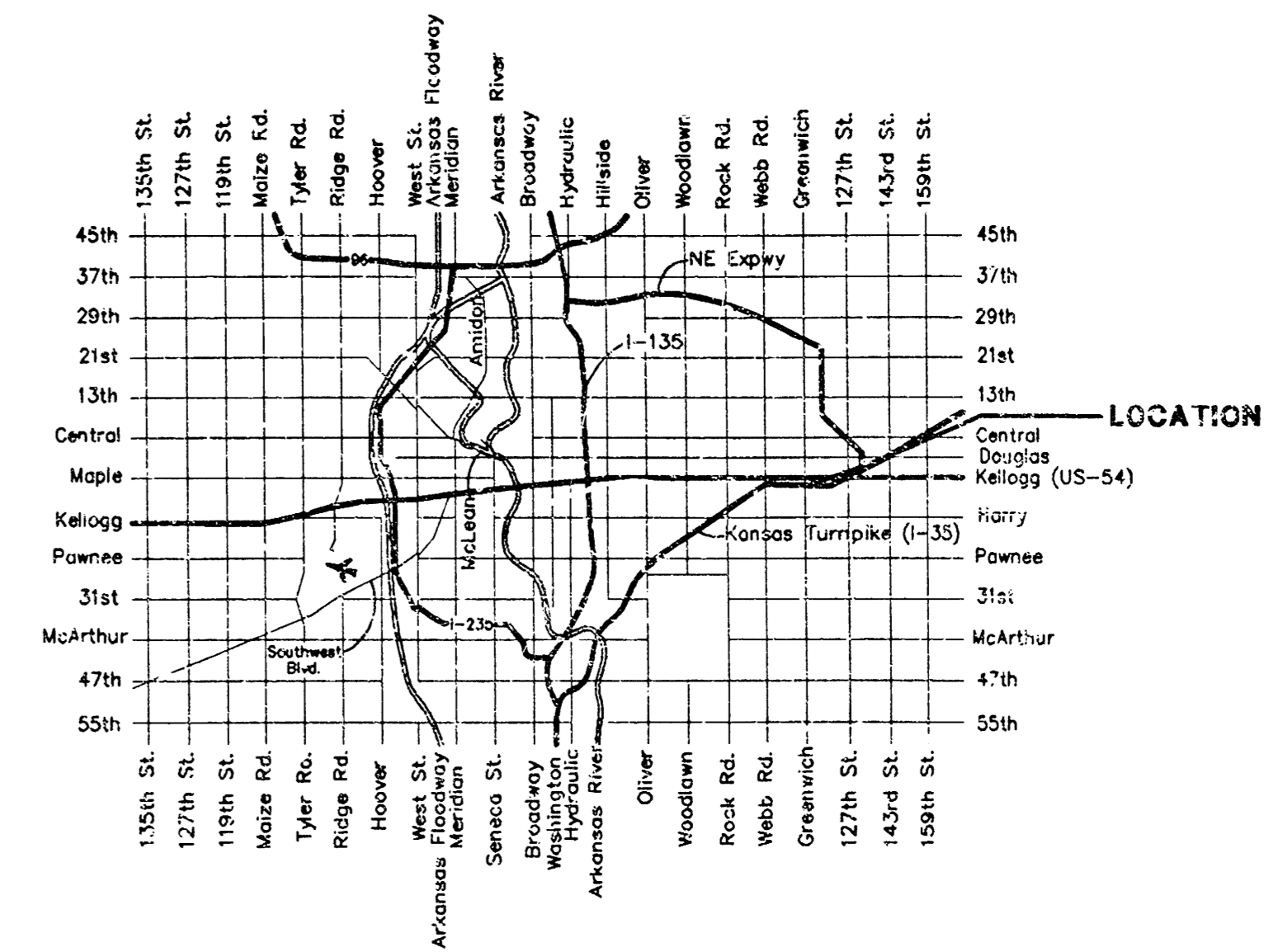
July 2003

GENERAL NOTES:

- Contractor will be required to provide notice to utility companies a minimum of forty-eight (48) hours prior to any excavation, as follows:
 Kansas One-Call 687-2470
 The Contractor must notify the following in case of an emergency:
 Cox Communications 262-4270
 Kansas Gas Service Company 1-888-462-4950
 Westar Energy (Electric) 383-8650
 Aquila Energy (Gas) 1-800-303-0357
 Southwestern Bell Telephone Co. 1-800-286-8313
 City of Wichita Water Dept. (Water) 268-4908
 City of Wichita Sewer Maint. (SS) 268-4024
 City of Wichita Storm Sewer Maint. 268-4090
 City of Wichita Traffic Maint. 268-4034
- Utility service lines, poles, valve boxes, meters, et cetera are to be adjusted as necessary by others prior to construction unless the plans specifically call for their adjustment by the Contractor or unless the plans specifically identify a utility to be adjusted by its owner during construction. Existing utilities and their location, as shown on the plans represent the best information obtainable for design and shall be field verified. The contractor will be required to work around existing utilities within the right-of-way which do not conflict with proposed construction.
- Contractor shall not start work on the project until the project inspector is assigned to the project and is present on the site. Contractor shall not start on the project until all necessary bonds and permits have been obtained. Any work done without inspection will be required to be uncovered for inspection.
- Rubble from the removal of miscellaneous structures and excess excavation which is to be wasted shall be disposed of on sites to be provided by the Contractor. These sites shall be approved by the Engineer as to suitability, appearance and site location. Locations that, in the opinion of the Engineer, will leave an unsightly appearance will not be approved. All disposal sites must be approved by the Kansas Department of Health and Environment. Material either stockpiled or disposed of in a road plain would require a Kansas State Board of Agriculture permit. Any material dumped in waters of the United States or wetlands is subject to U.S. Corps. of Engineers permitting regulations. Any material buried or stockpiled beyond approved construction limits would require additional archaeological investigations unless buried in a previously approved borrow location.
- All storm sewers shall be installed in accordance with the most recent edition of City of Wichita, Kansas Standard Specifications for the Construction of City Projects.
- All R/W areas disturbed by construction operations shall be seeded with K-31 fescue at a rate of 8 lbs. per 1000 sq. feet or as per city specs. Contractor to prepare ground to city specifications.

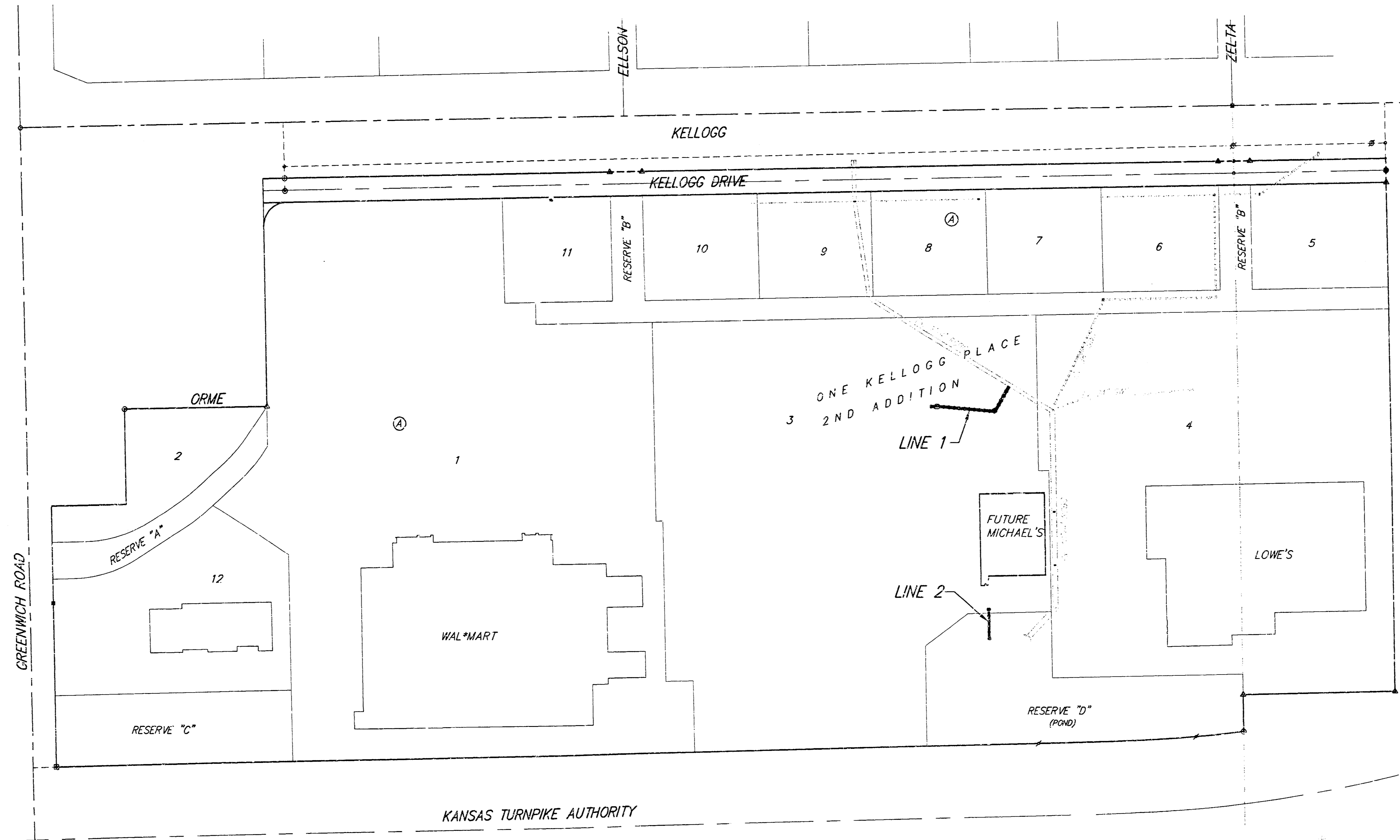
Benchmarks:

- #1 (Site Benchmark)**
 □ Cut in W curb of SW most Landscape Island in Lowe's (Lot 4) parking lot. Approx. 35' N of Jog in W Lot Line and 13'E of W Lot Line.
 Elev. = 171.16 City Datum
- #2**
 Greenwich Road & Kellogg - C.O.W. disk, NW corner of traffic signal light pole base. 48.60' NNW of C sanitary sewer manhole. 48.70' S of C of traffic signal manhole in Kellogg median. 70.50' E of back of E curb return on E side of median in Greenwich Rd.
 Elev. = 164.78 City Datum



Vicinity Map

Scale: 1" = 150'



Index

Cover	1
Plan/Profile - Lines 1 & 2	2
18" Headwall & Spc. Drop Inlet Details	3
Standard Drop Inlet Detail	4
BMP Erosion Details	5
Copy Of Plat	6

Legal Description

Lot 3, Block A, One Kellogg Place 2nd Addition
 Wichita, Sedgwick County, Kansas

Booked
 E-6
 10/01/03
 RDL

APPROVED AS NOTED
 BY CITY ENGINEER OF WICHITA
 Storm Sewers VRH 7/2/03

NOTE TO CONTRACTORS
 Installation, inspection and testing for this project is to be provided by a Licensed Consulting Engineering Firm under contract with the Owner/Developer. Said inspection to be in accordance with the City of Wichita standard construction engineering practices and certified by a Licensed Professional Engineer. No work shall be performed in dedicated easements or public right-of-way by the Contractor without such inspection nor shall any work be commenced without written authorization by the City Engineer. All Construction and Materials shall comply with the City of Wichita Specifications and Standards (on file and available in the City Engineer's Office).

26 JUNE 2003
BAUGHMAN COMPANY P.A.
 ENGINEERING, SURVEYING, & PLANNING
 315 E. 15th St. - WICHITA, KANSAS 67211
 F:\ENG\MICHAELS\ONE KELLOGG\SS\SHS\CON\DWG-D10

7/1/03

18 15 1 14

BENCHMARKS

#1 (Site Benchmark)

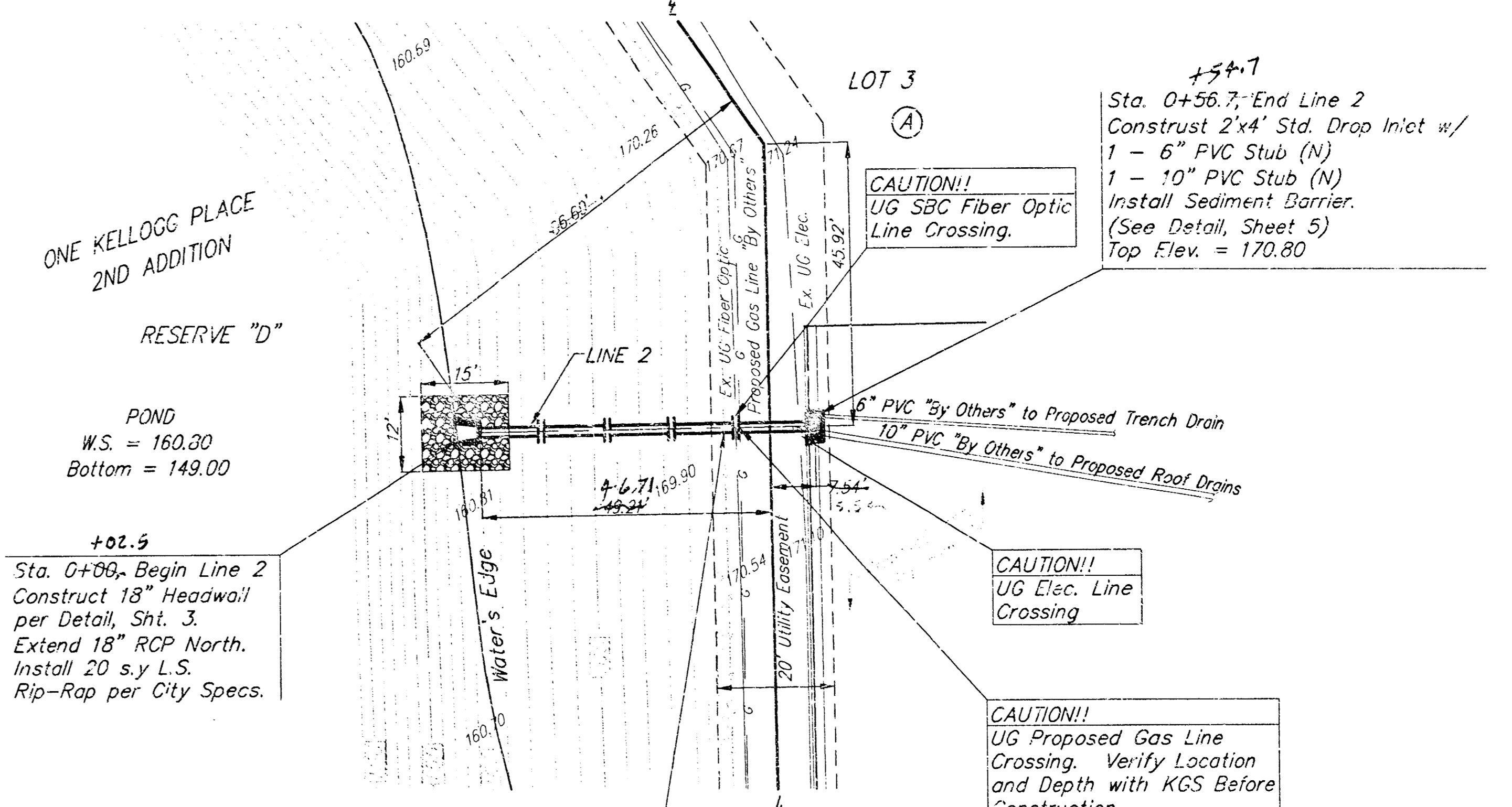
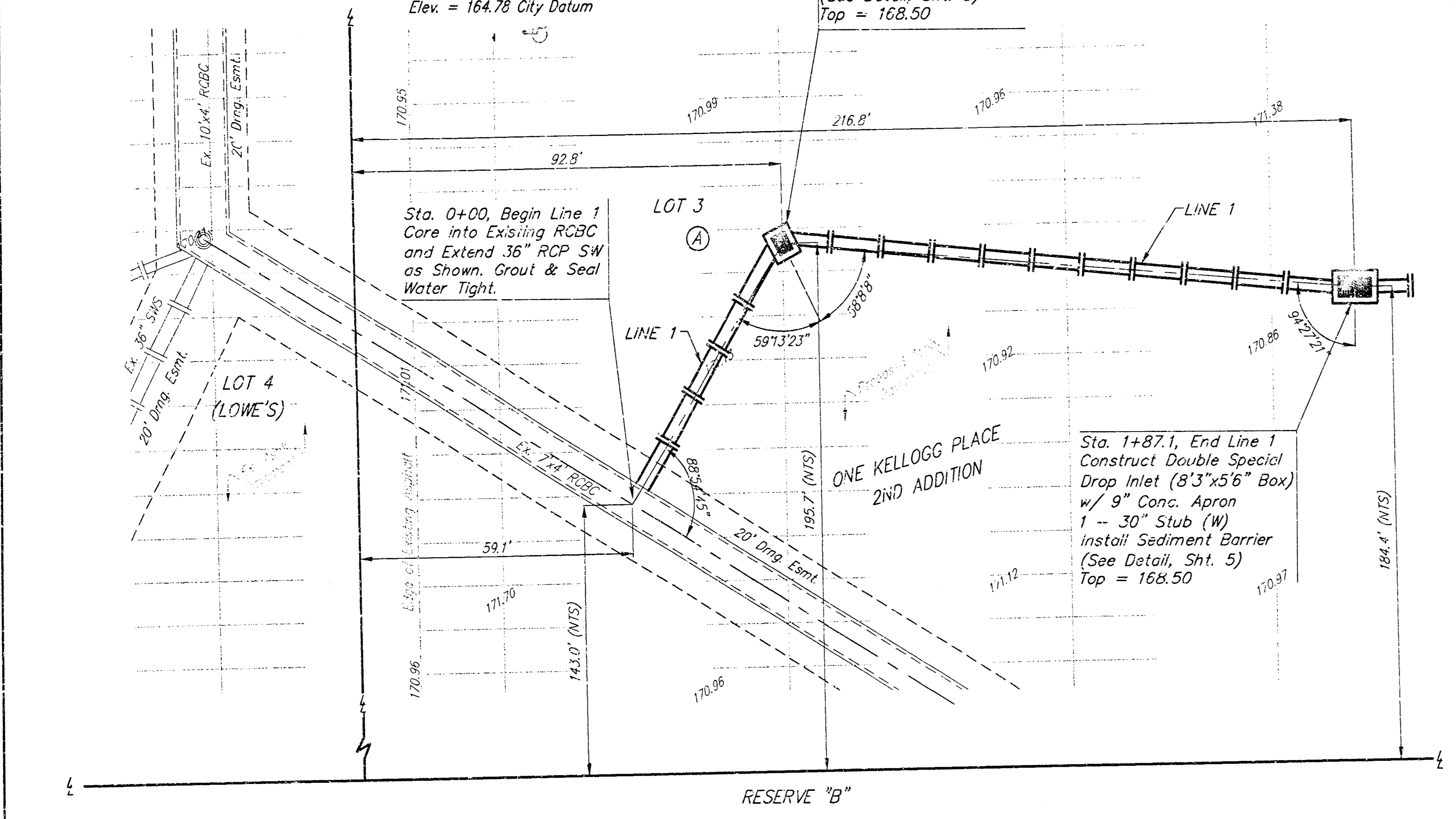
Cut in W curb of 24" most Landscape island in Lowe's (Lot 4) parking lot. Approx 35' N of Jog in W Lot Line and 13'E of W Lot Line. Elev. = 171.16 City Datum

Greenwich Road & Kellogg - C.O.W. disk, NW corner of traffic signal pole base. 48.60' NNW of C sanitary sewer manhole. 48.70' S of C of traffic signal manhole in Kellogg median. 70.50' E of back of E curb return on E side of median in Greenwich Rd. Elev. = 164.78 City Datum

Sta. 0+62.6, Line 1
Construct Single Special Drop Inlet (7'x4.5' Box) w/ 3" Conc. Apron. Install Sediment Barrier (See Detail, Sht. 5)
Top = 168.50

Sta. 1+87.1, End Line 1
Construct Double Special Drop Inlet (8'3"x5'6" Box) w/ 9" Conc. Apron 1 - 30" Stub (W) Install Sediment Barrier (See Detail, Sht. 5)
Top = 168.50

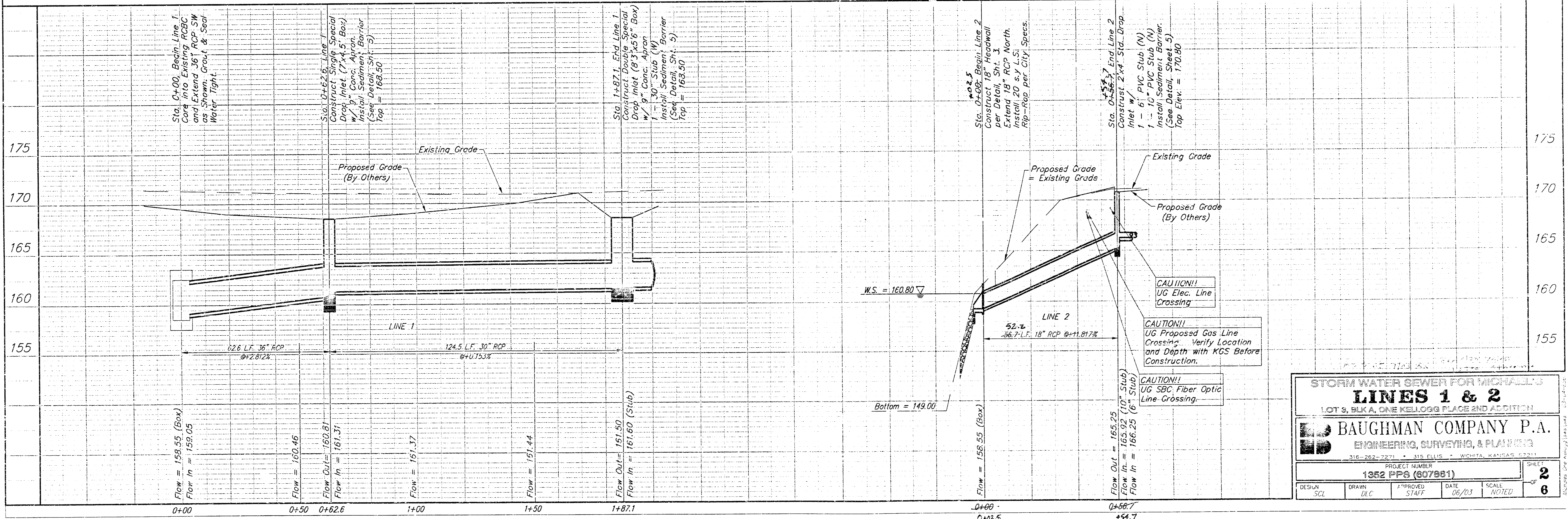
Sta. 0+56.7, End Line 2
Construct 2'x4' Std. Drop Inlet w/ 1 - 6" PVC Stub (N) 1 - 10" PVC Stub (N) Install Sediment Barrier. (See Detail, Sheet 5)
Top Elev. = 170.80



SCALE:
1" = 20' HORIZONTAL
1" = 5' VERTICAL

Contractor Shall Follow All Applicable Best Management Practices (BMP) For Erosion Control, See Sheet 5

Remove & Replace Existing Fence As Necessary For Construction.



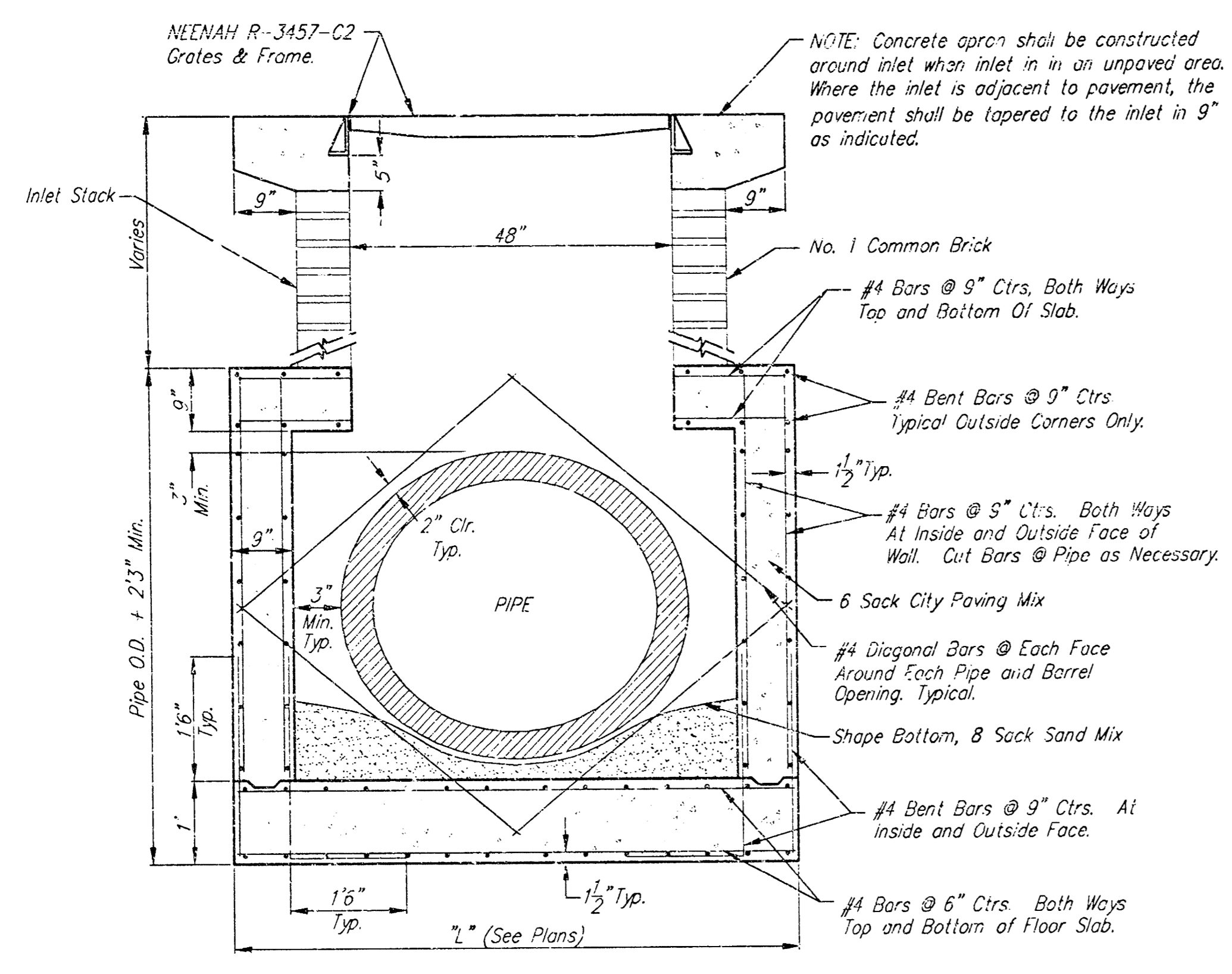
STORM WATER SEWER FOR MICHAEL'S
LINES 1 & 2
LOT 3, BLKA, ONE KELLOGG PLACE 2ND ADDITION

BAUGHMAN COMPANY P.A.
ENGINEERING, SURVEYING, & PLANNING

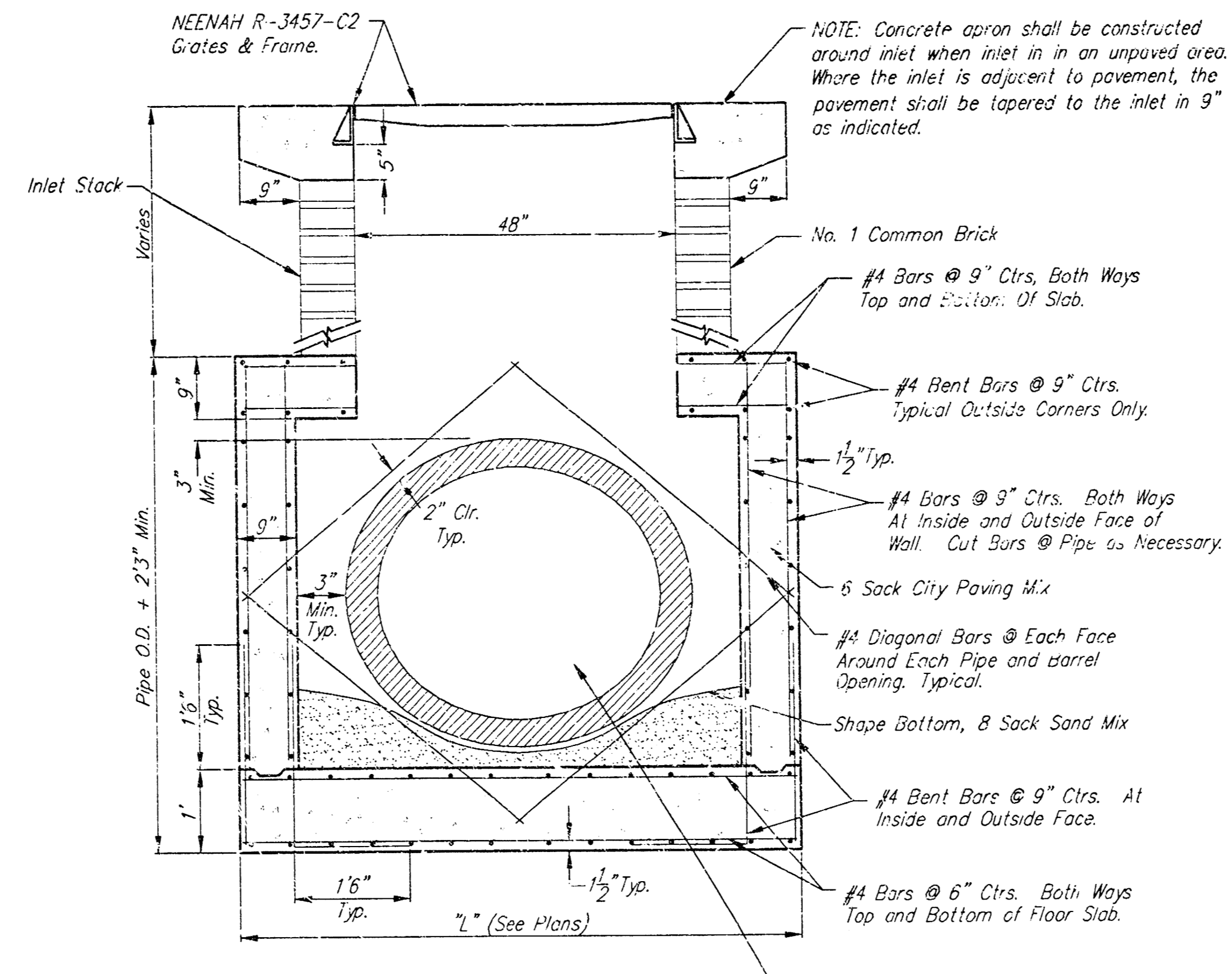
PROJECT NUMBER: 1352 PPS (607881)

DESIGN: SCJ	DRAWN: DMC	APPROVED: STAFF	DATE: 06/03	SCALE: NOTED
-------------	------------	-----------------	-------------	--------------

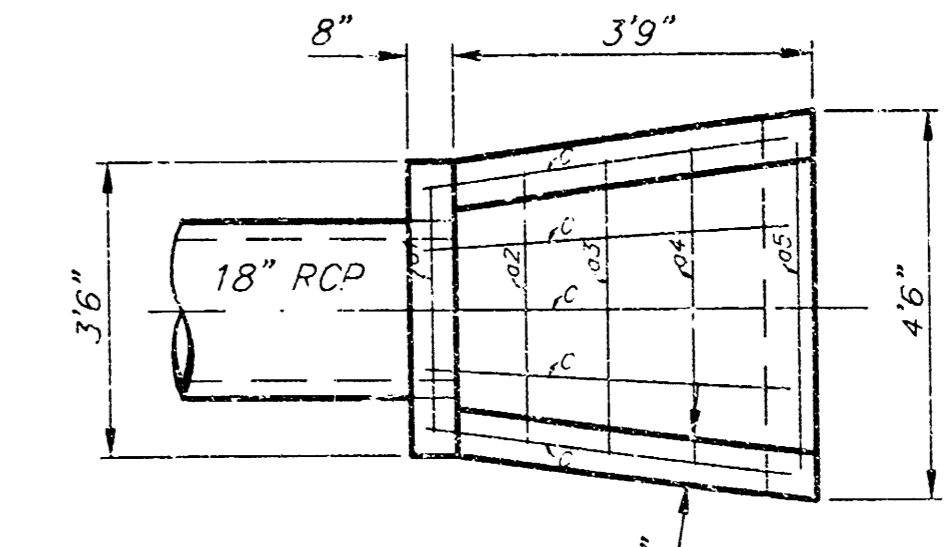
SHEET 2 OF 6



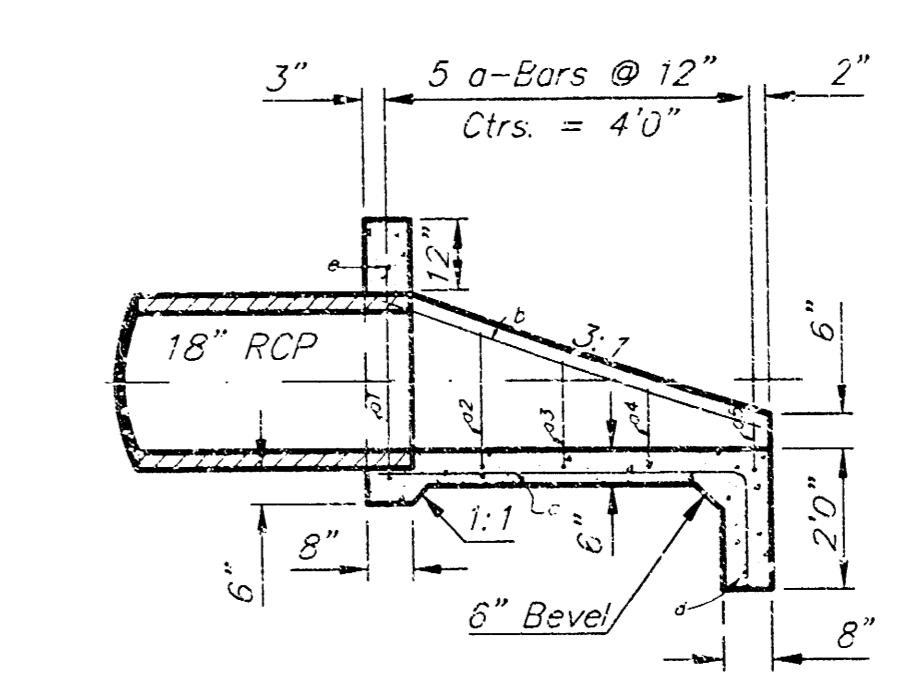
SECTION A-A



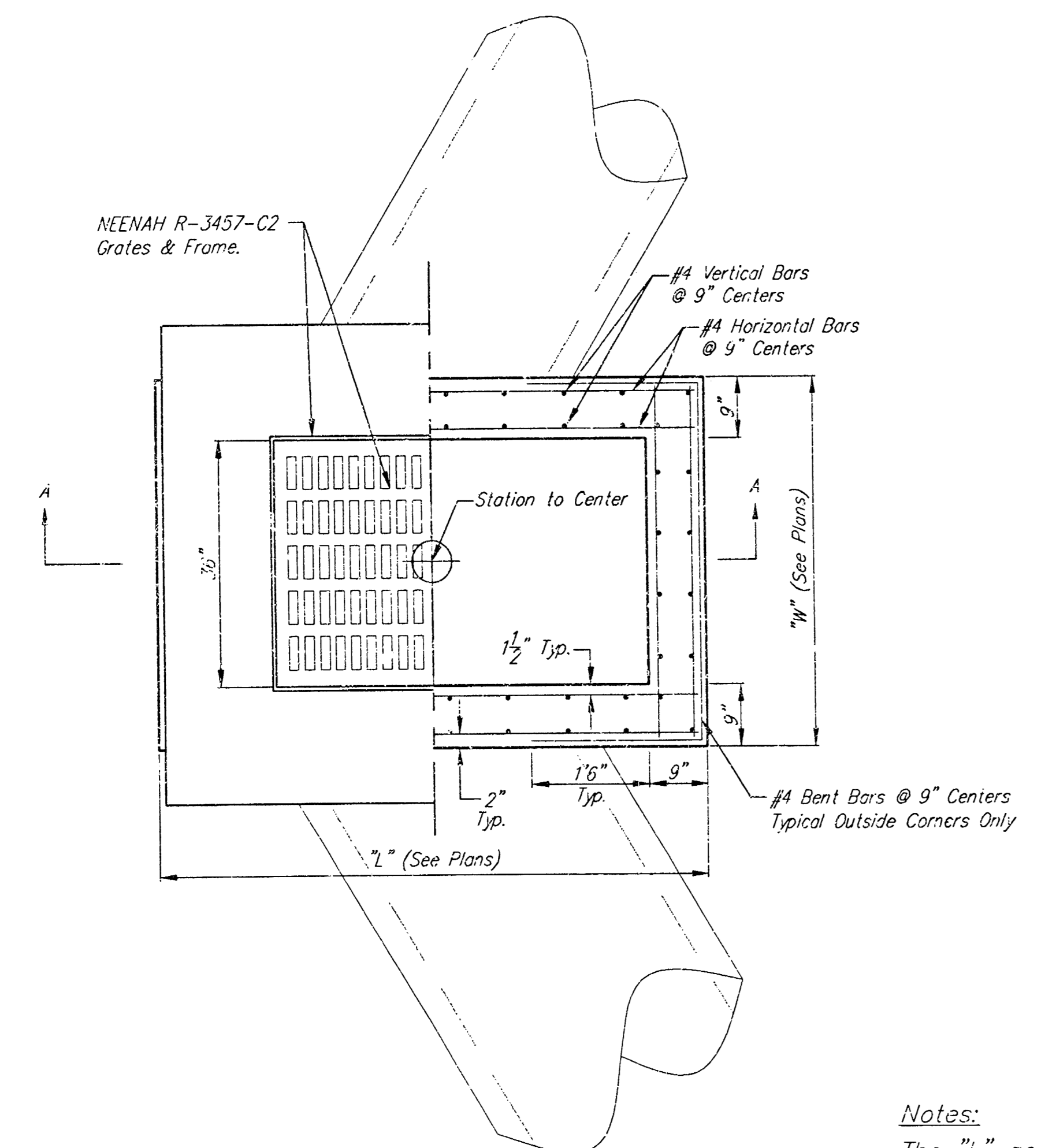
SECTION A-A



PLAN



SECTION



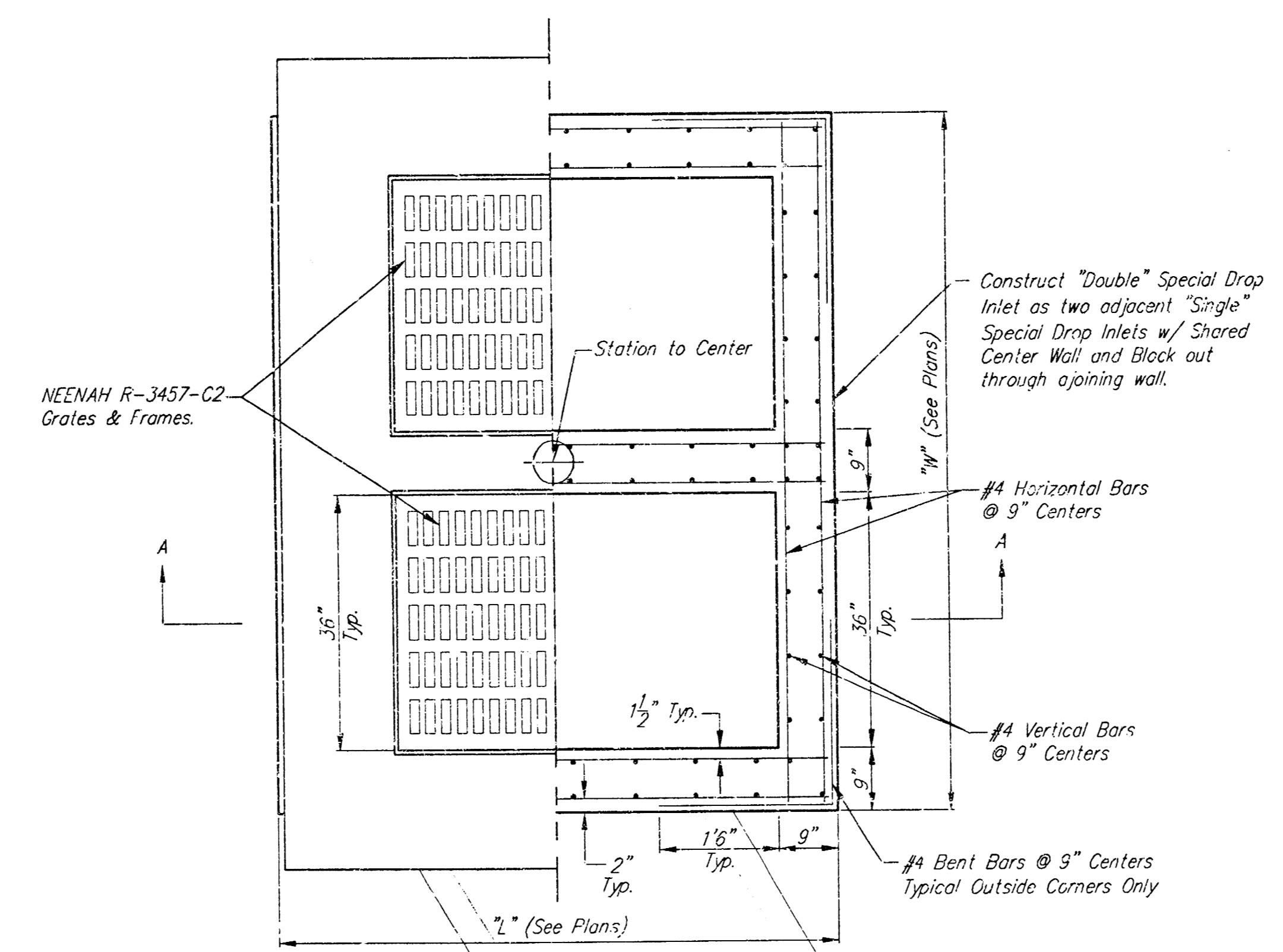
TOP

SINGLE SPECIAL DROP INLET

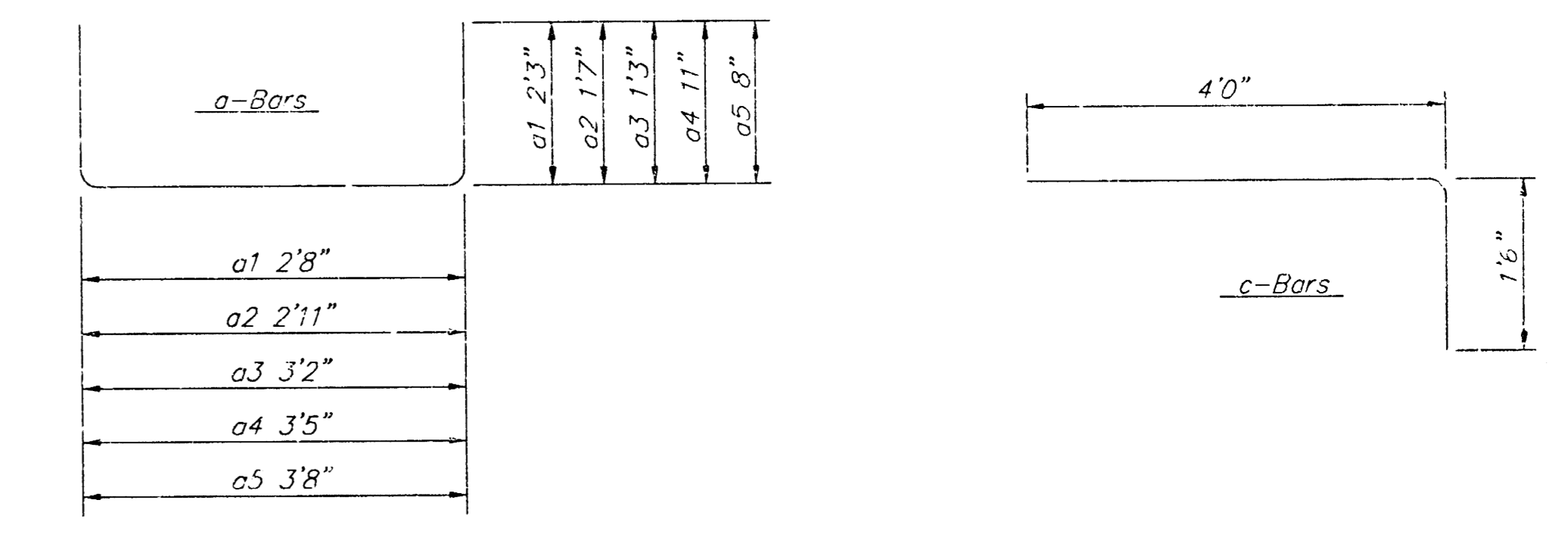
Notes:
The "L" and "W" dimensions shall never be less than the outer most dimensions of the inlet stack walls.

Completed manhole shall be without leaks and watertight.

Concrete wall thicknesses shown represents inlet type located within traffic bearing areas. Inlet wall, base, & top dimensions may be reduced when inlets are not subject to vehicle loads. Contractor shall be required to submit shop drawings to the Engineer for approval.



TOP



REBAR SCHEDULE

Bar	Shape	No.	Length	Weight
a1	┌	1	7'2"	4.79
a2	└	1	6'1"	4.06
a3	┌	1	5'8"	3.79
a4	└	1	5'3"	3.51
a5	┌	1	5'0"	3.34
b	└	2	4'0"	5.34
c	┌	5	5'6"	18.37
d	└	1	4'0"	2.67
e	┌	1	3'2"	2.12
Total Rebar				47.99 Lbs.
Concrete				0.91 C.Y.

A Deduction in Concrete Quantities Has Been Made for Pipe Openings Through the Headwall.
Field Band or Cut Reinforcing as Required for Clearance.
All Concrete Reinforcement to be #4 Rebar.
All Rebar to Have Min. of 1 1/2" Conc. Cover

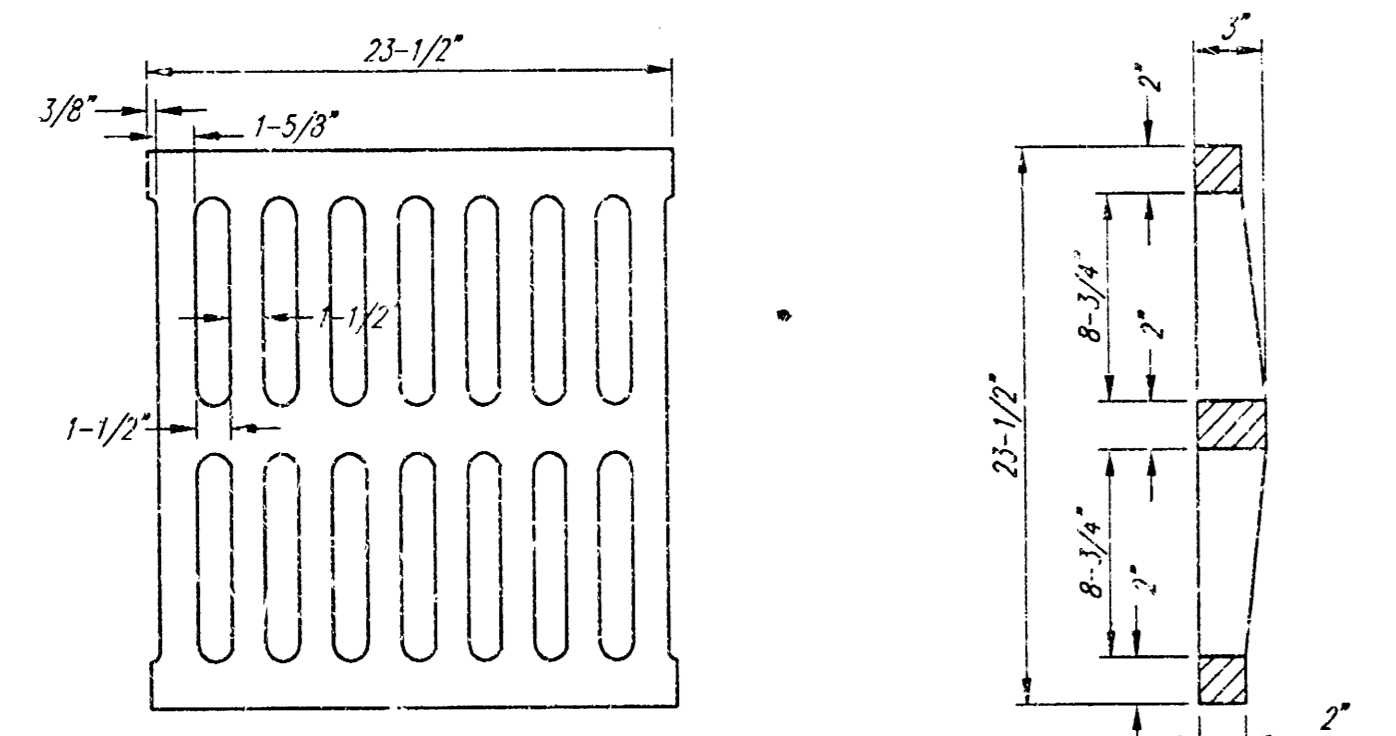
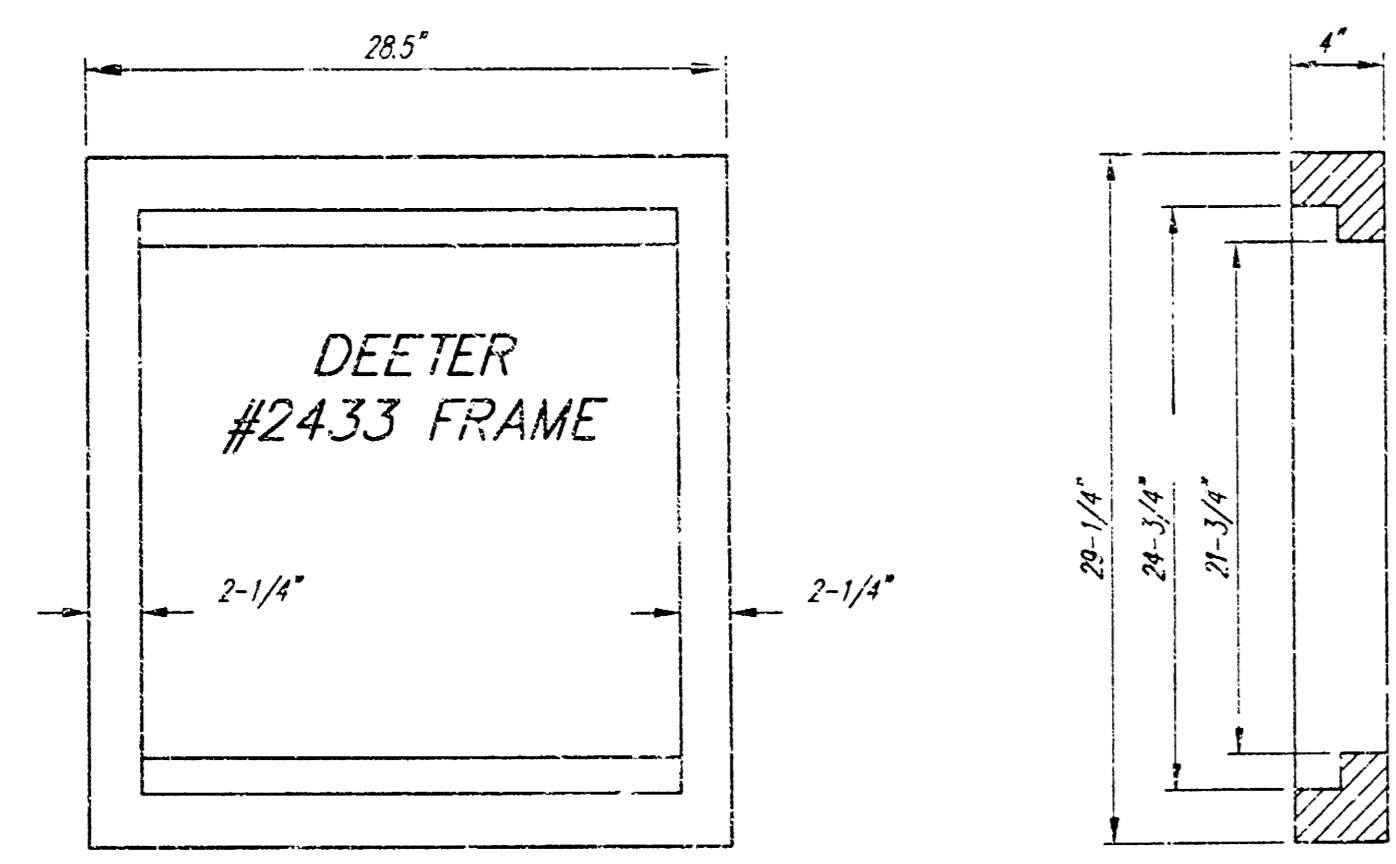
HEADWALL FOR 18" RCP

HEADWALL & SPC. DROP INLET
DETAILS

BAUGHMAN COMPANY P.A.
ENGINEERING, SURVEYING, & PLANNING
316-262-7271 • 315 ELLIS • WICHITA, KANSAS 67201

PROJECT NUMBER
1352 PPS(807801)

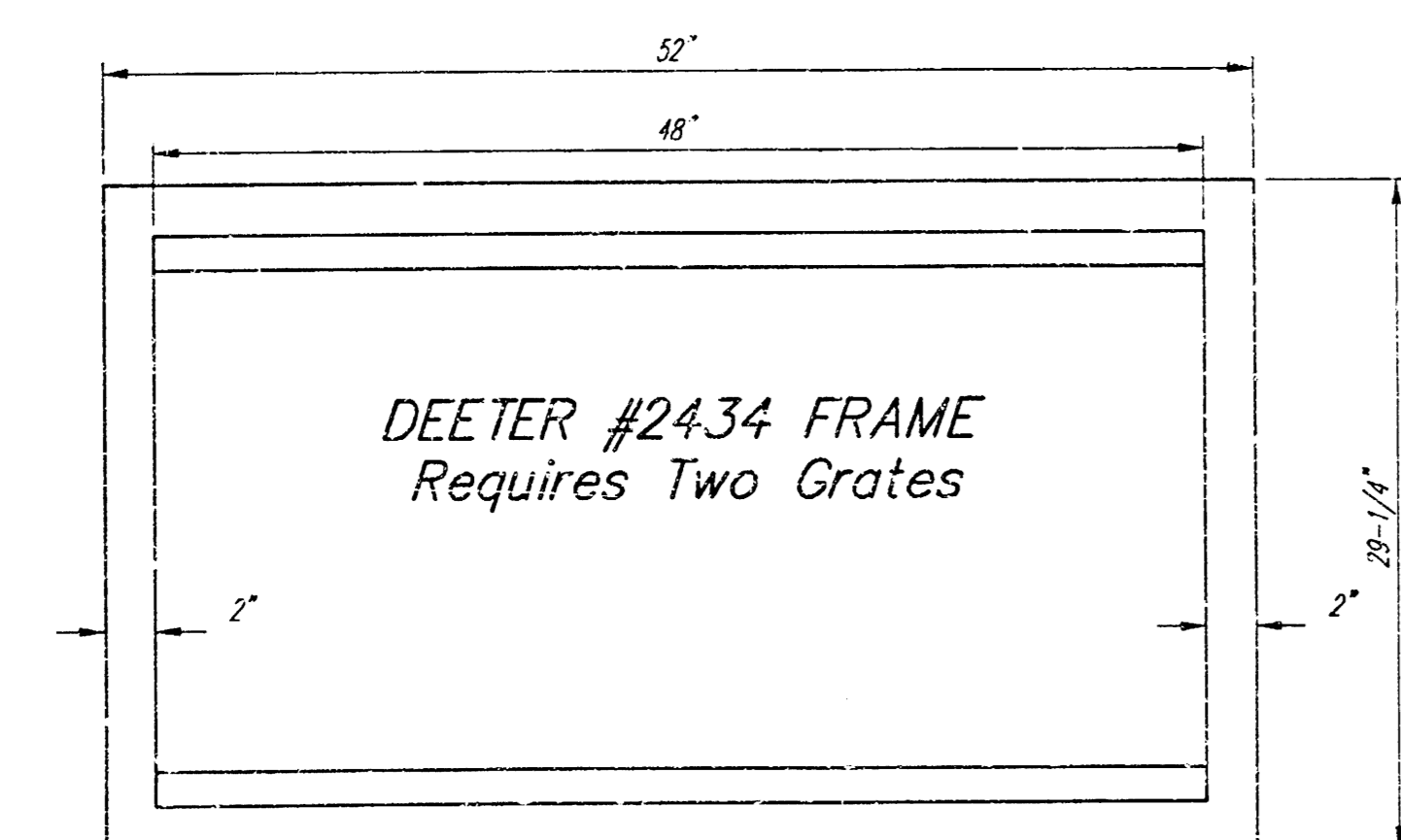
DESIGN: SC DRAWN: DC APPROVED: Staff DATE: June 2002 SCALE: NONE SHEET: 3 OF 6



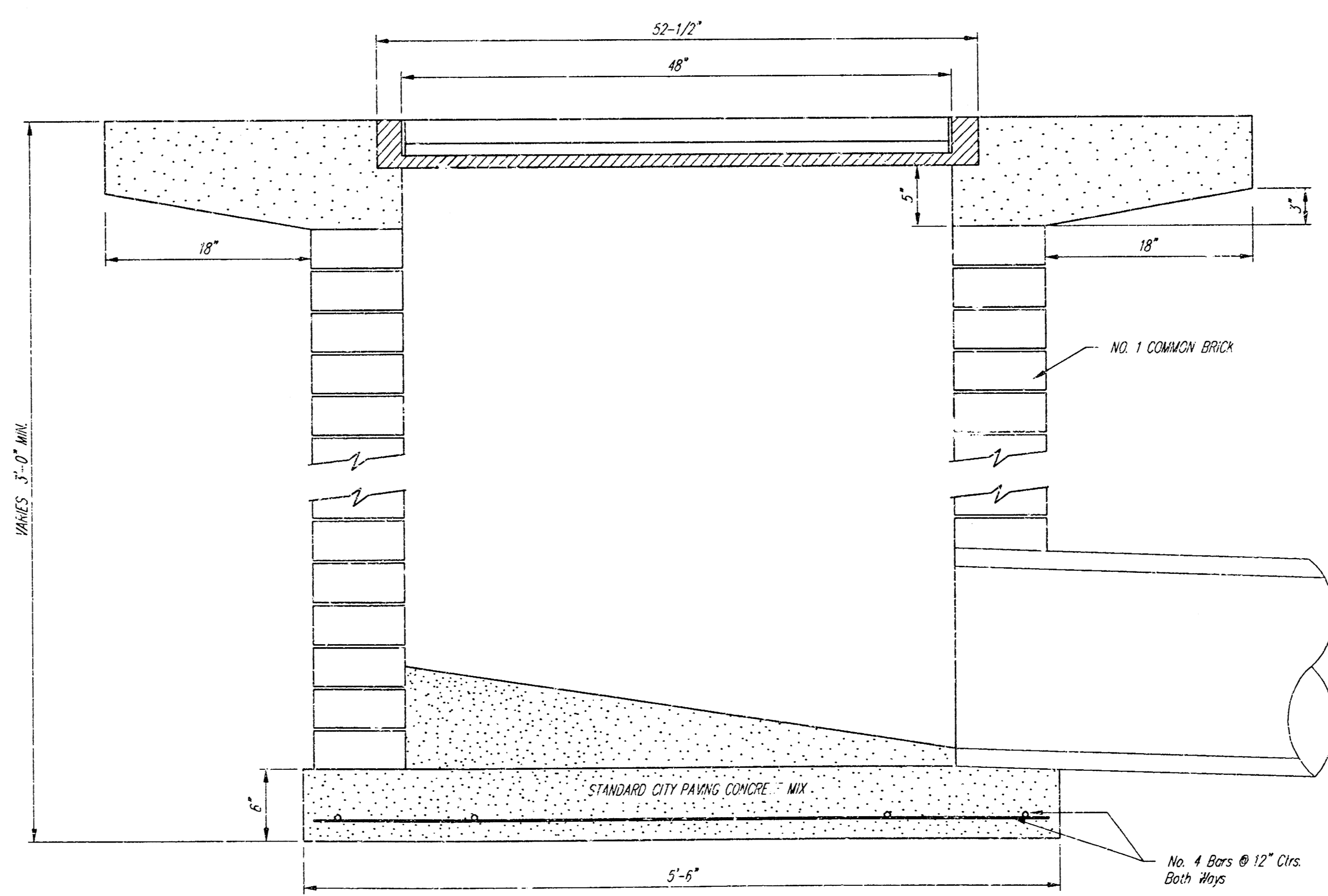
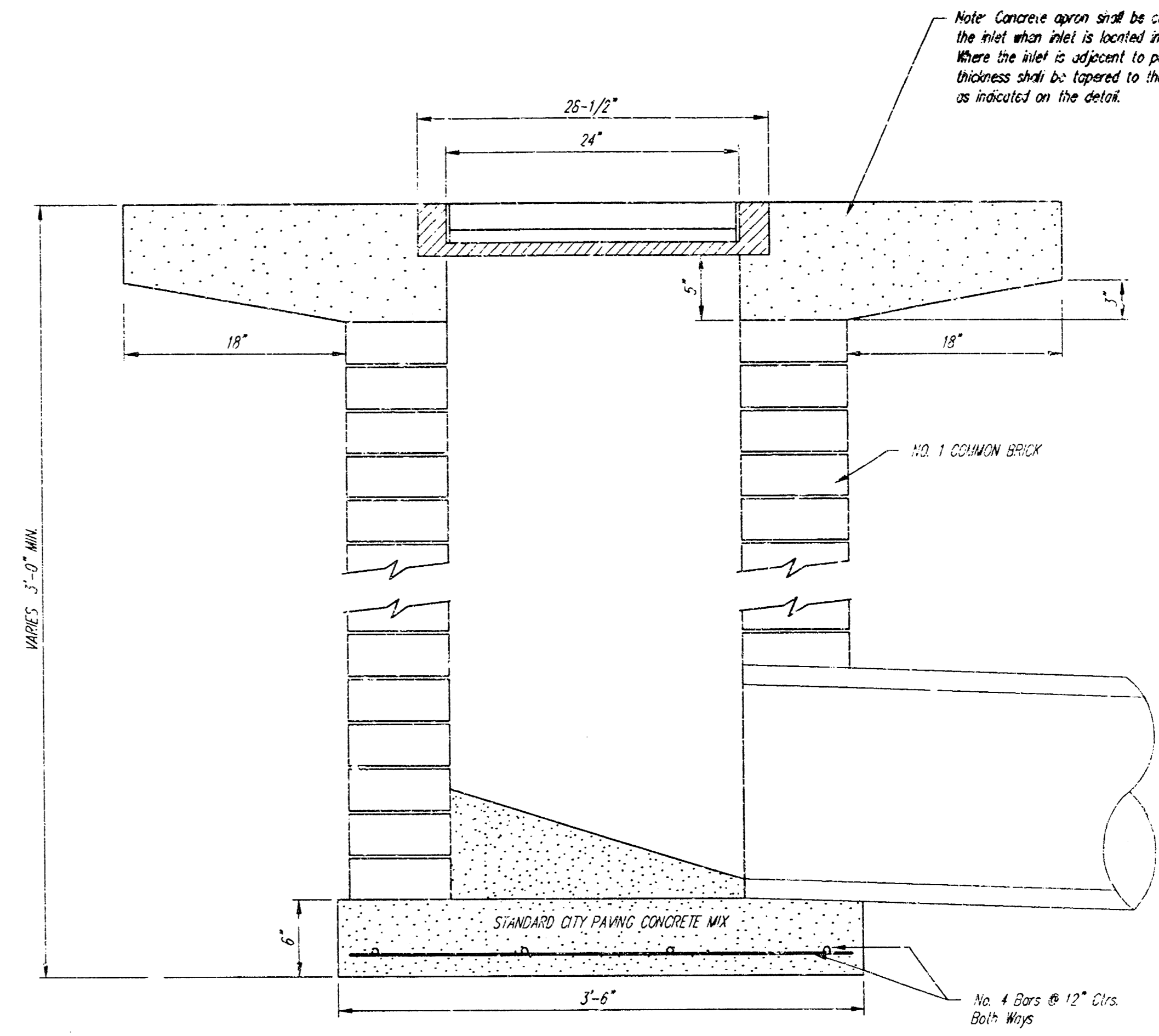
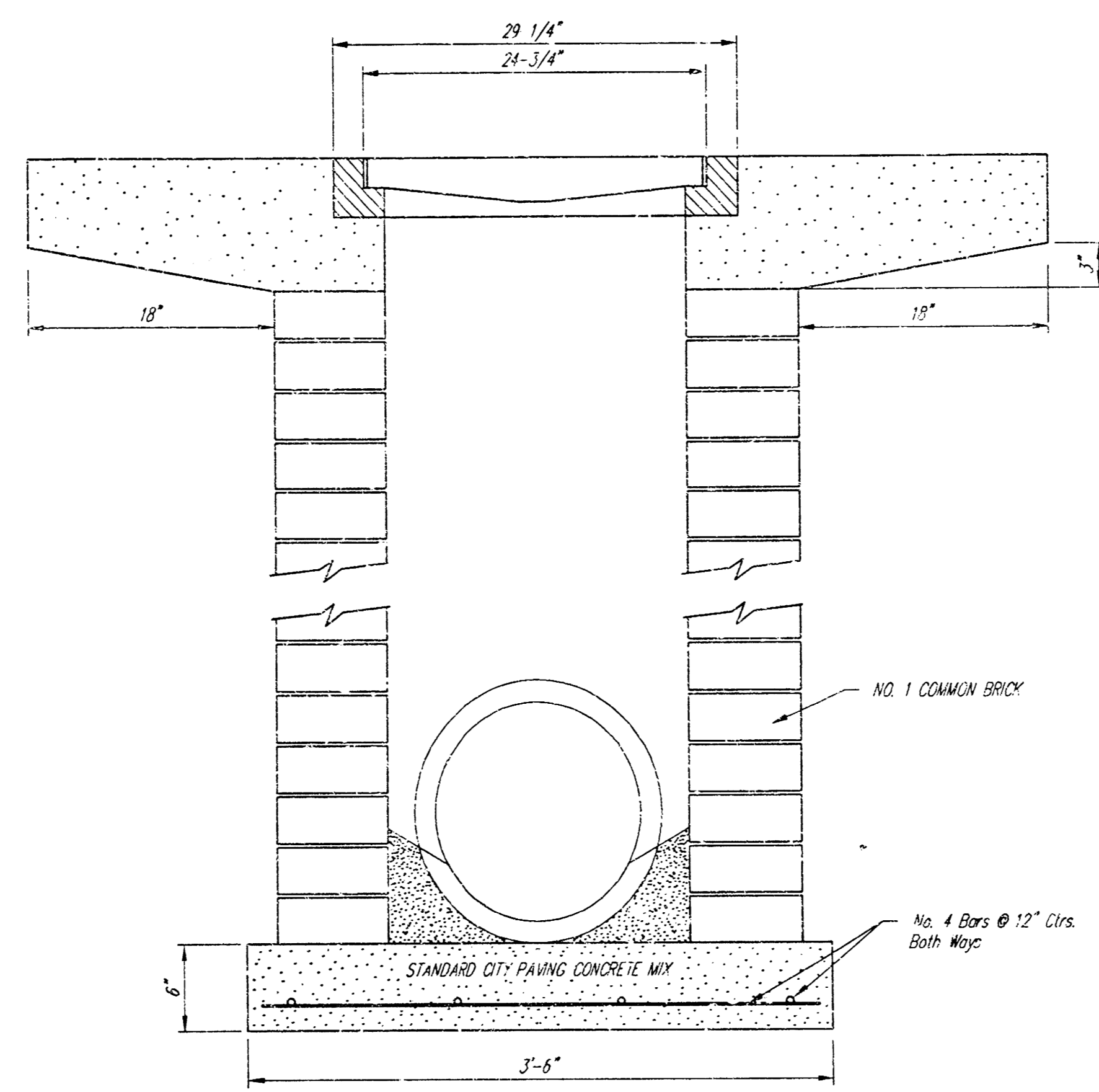
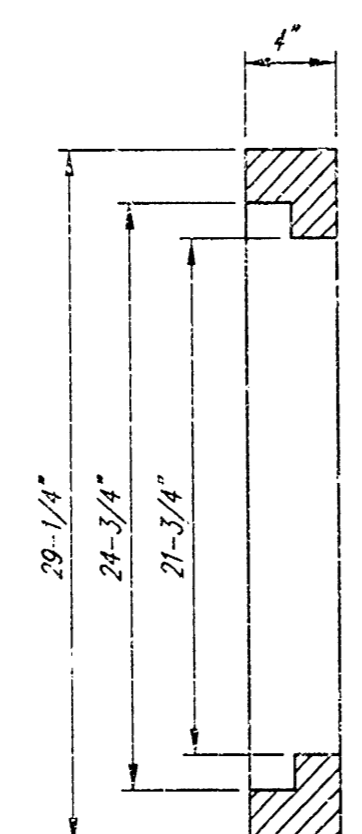
DEETER #2433 GRATE

24" x 24" Frame and Grate Detail

NOTE: Grates shall be imprinted on the top surfaces with "CITY OF WICHITA" using letters of least 1" in height. Other marking methods may be approved by the engineer.

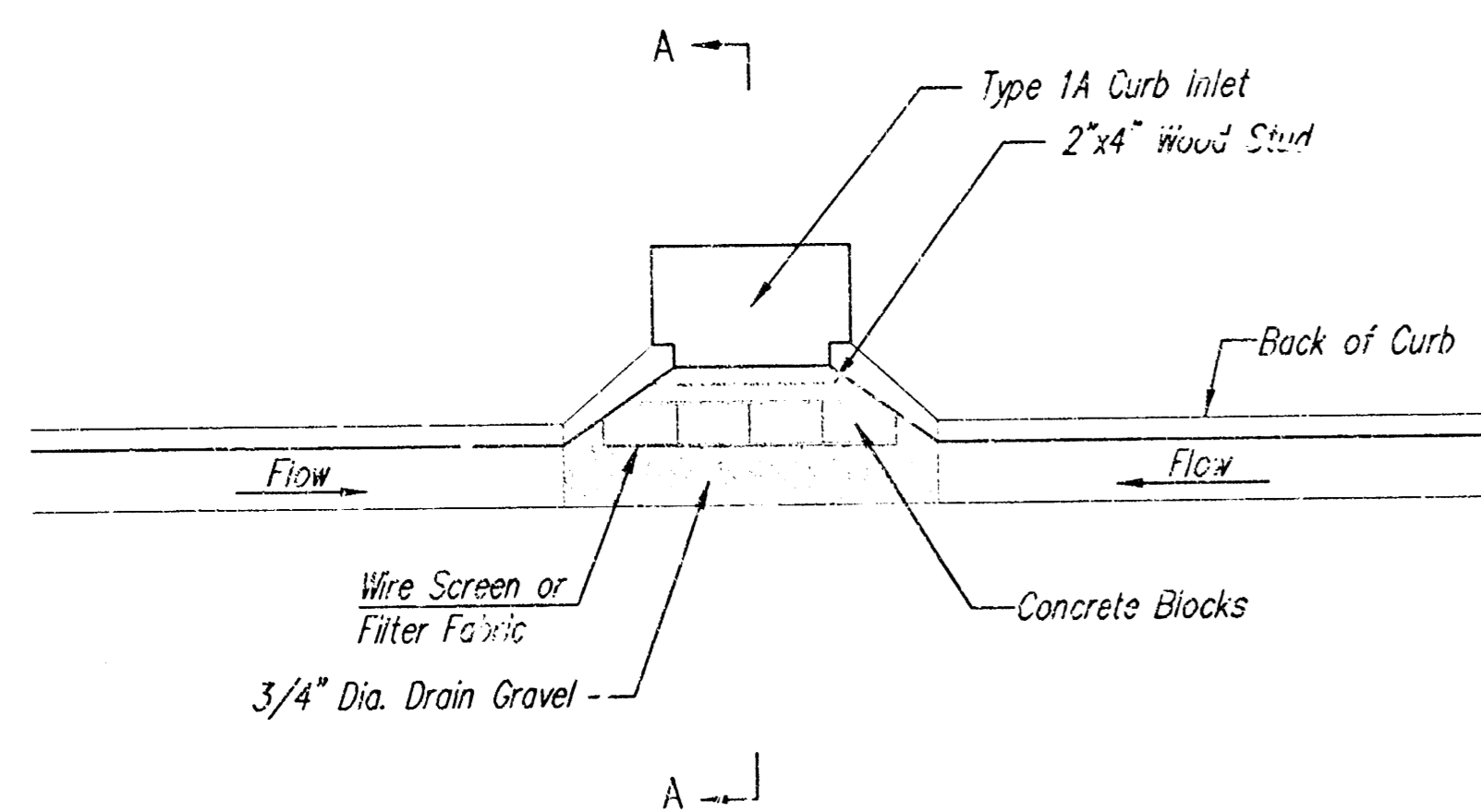
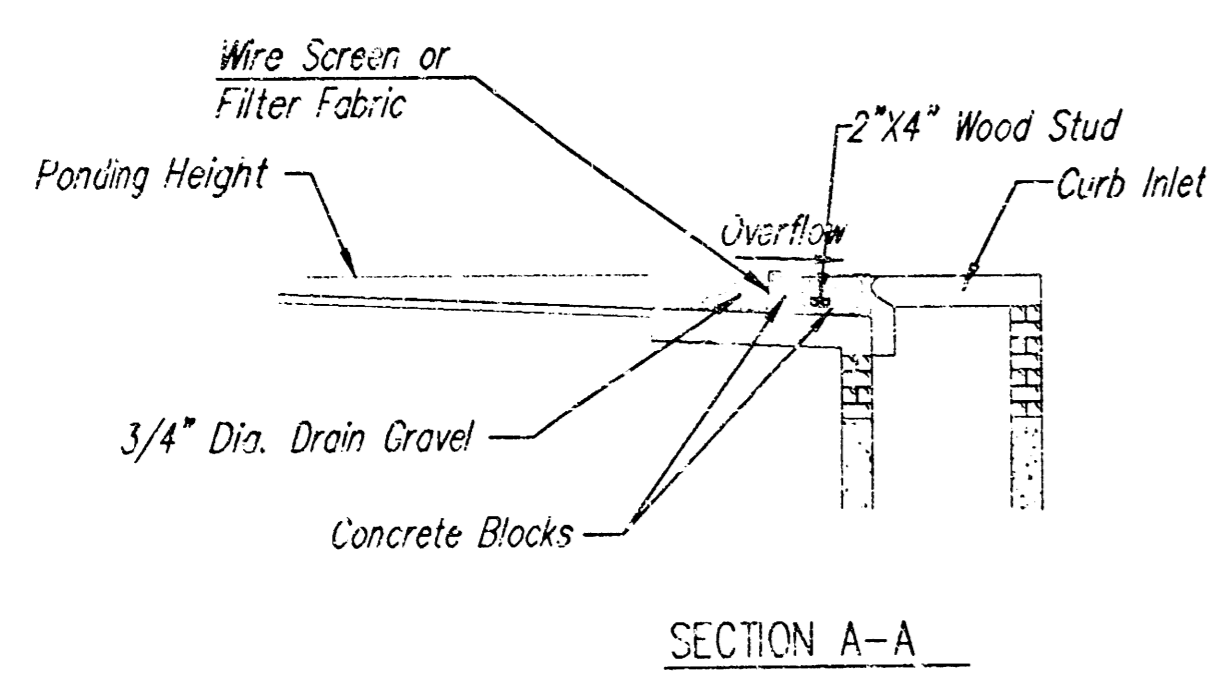


Double 24" x 24" Frame Detail



STANDARD DROP INLET DETAIL			
BAUGHMAN COMPANY P.A. ENGINEERING, SURVEYING, & PLANNING 310-282-7200 • 315 GALLS • WICHITA, KANSAS 67201			
PROJECT NUMBER 1352 FPS(607861)			
DESIGN STAFF	DRAWN STAFF	APPROVED	DATE 6/03
		SCALE NONE	SHEET 4 OF 6

DE JANS UNIFORM 11 10-11-01



CURB INLET GRAVEL FILTERS
(INLET PROTECTION-RESIDENTIAL STREETS ONLY)

NOTE: Other types of curb inlet protection may be approved by the city so long as equal protection is provided.

A gravel inlet filter shall be installed at sump locations on residential streets. This type of protection is not to be used on arterial or collector streets at any time that it would pose an undue traffic hazard.

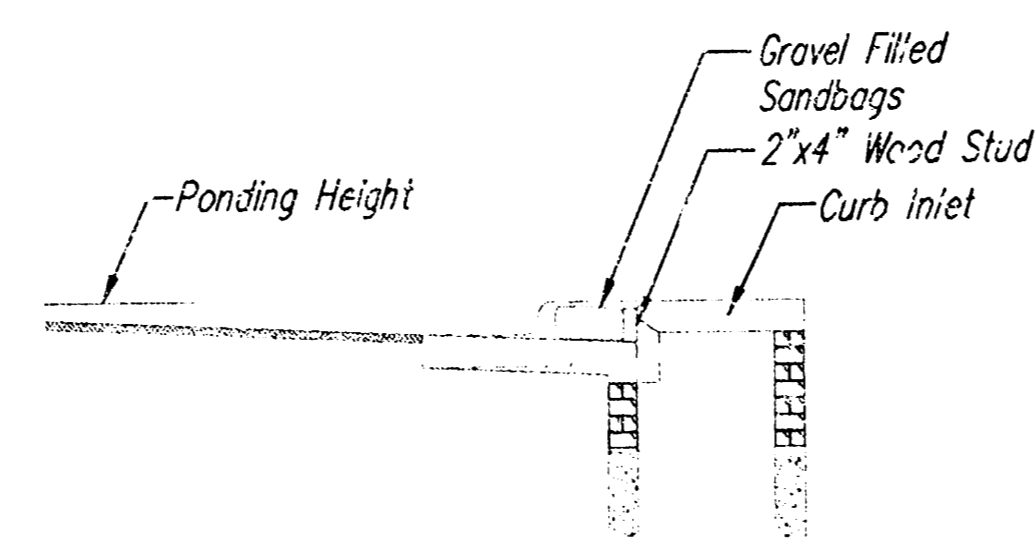
Instructions for Installing:

- STEP 1: Place concrete blocks around the inlet as shown on drawing. Insert 2x4 board as shown.
- STEP 2: Wrap 1/2" mesh wire screen around the concrete blocks.
- STEP 3: Place 1" to 1-1/2" diameter rock around the blocks and wire screen. Be sure the rock extends down from the top of the concrete block.
- STEP 4: To prevent damage to vehicles, signs warning drivers about the structures may be necessary. An alternative installation is the use of gravel bags supported by a 2"x4" board to prevent collapsing.

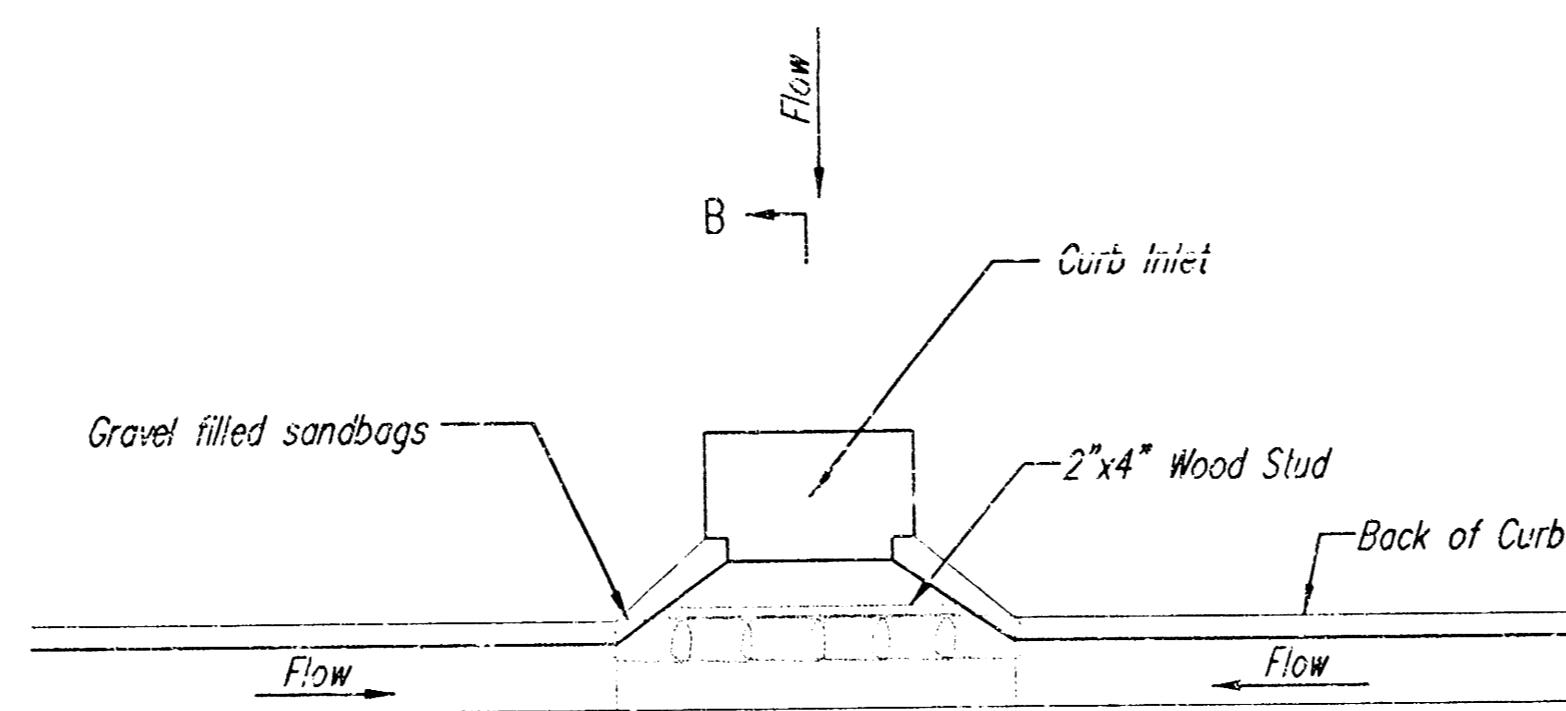
Use of rock with diameters smaller than 1" in the bag may result in clogging of pores and reduce the amount of water flowing into an inlet.

Maintenance:

All curb inlet gravel filters shall be inspected and repaired after each runoff event. Sediment deposits are to be removed once material is within 8 cm (3 inches) of the top of any block. Periodically, the gravel shall be raked to increase infiltration and filtering of runoff waters. Accumulated sediment is to be removed immediately from roads and streets.

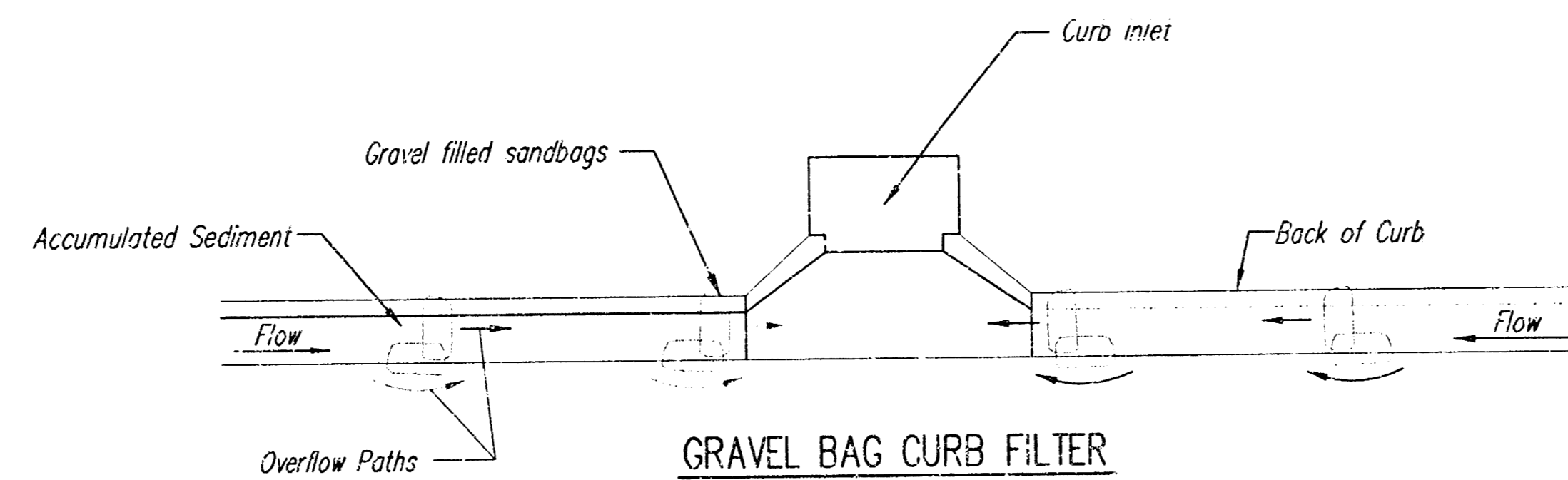


SECTION B-B



CURB INLET SANDBAG FILTERS
(INLET PROTECTION)

NOTE: Other types of curb inlet protection may be approved by the City so long as equal protection is provided.



GRAVEL BAG CURB FILTER
(INLET PROTECTION)

NOTE: Place two or more sets of bags in a manner that results in maximum support. The flow line bag must be lower than top of curb.

CURB SEDIMENT TRAPS

When inlets are located on streets having a grade (i.e., sump conditions do not exist), installing gravel (or sand) bags in the gutter flow line to create small sediment traps can be considered. Gravel bags are recommended over sand bags to allow for drainage.

If the spacing between bags becomes too large, little sediment may be trapped. Spacing of bags should be completed using the table or graph that illustrates placement distances based upon street slope. When installed in the gutter, bag tops must be lower than the sidewalk.

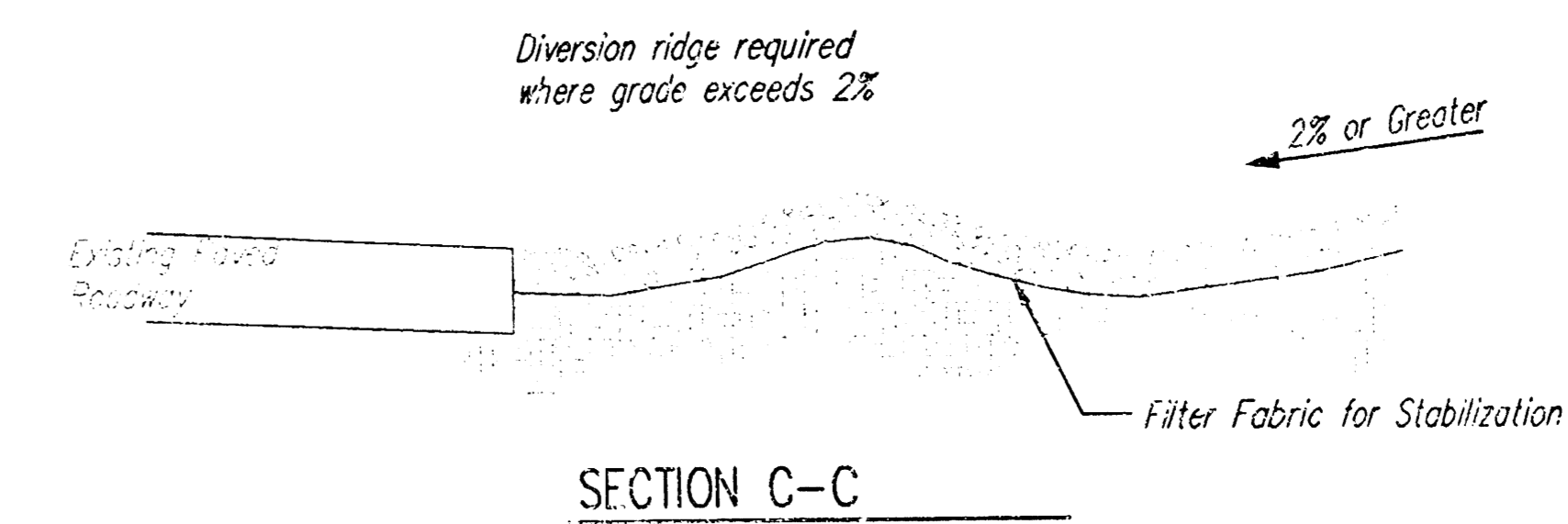
Spacing:

Gravel bags are to be placed according to street grades using the following table or graph that appears below.

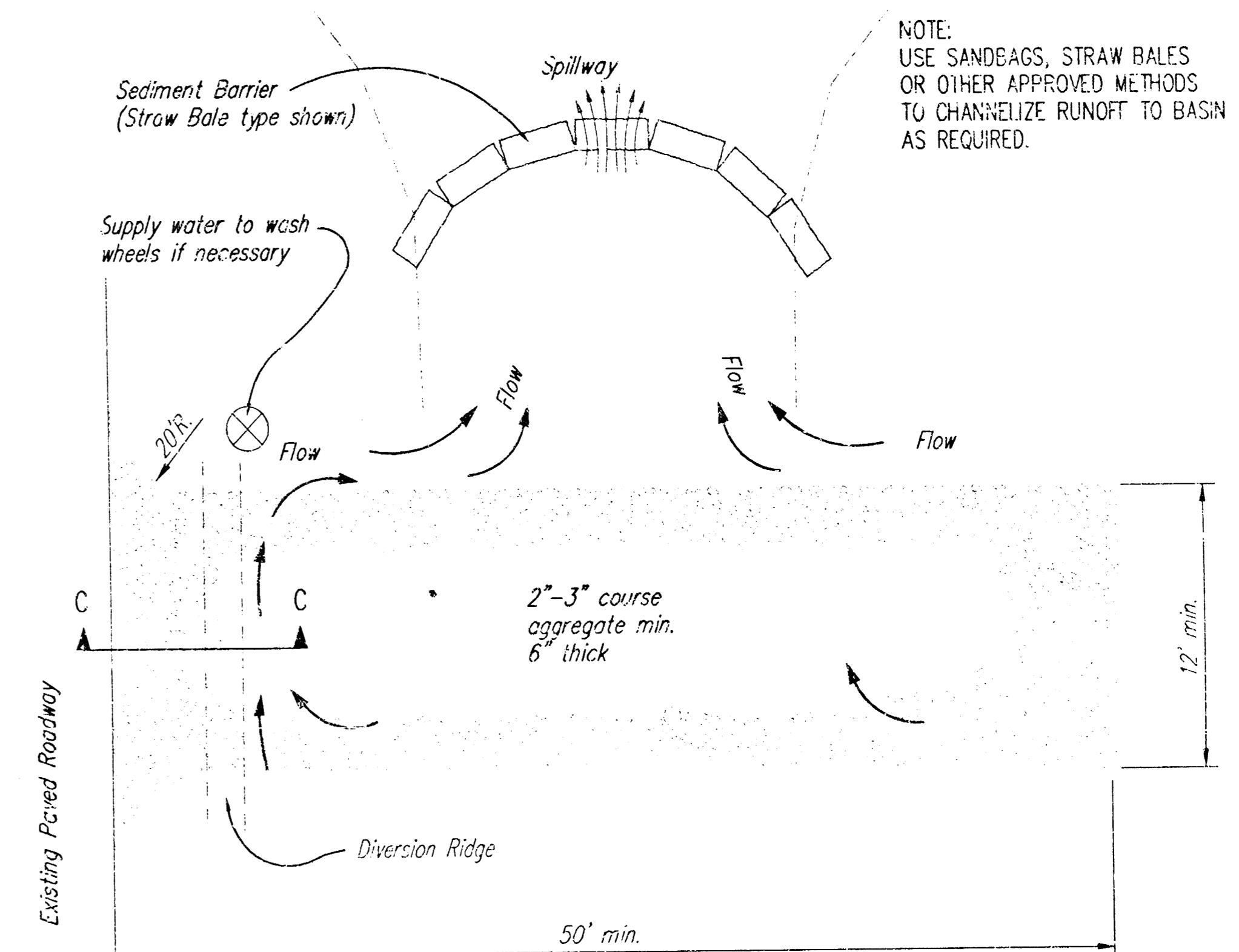
GRADE (%)	SPACING (FEET)
0.5	75
1.0	45
2.0	18
3.0	12
4.0	9
5.0	6

Maintenance:

Collected sediment shall be removed after every runoff event. Bags that are destroyed by vehicular traffic or through natural deterioration are to be immediately replaced.




SECTION C-C



STABILIZED CONSTRUCTION ENTRANCE

NOTES:

1. THE ENTRANCE SHALL BE MAINTAINED IN A CONDITION THAT WILL PREVENT TRACKING OR FLOWING OF SEDIMENT ONTO PUBLIC RIGHTS-OF-WAY. THIS MAY REQUIRE TOP DRESSING, REPAIR AND/OR CLEANOUT OF ANY MEASURES USED TO TRAP SEDIMENT.
2. WHEN NECESSARY, WHEELS SHALL BE CLEANED PRIOR TO ENTRANCE ONTO PUBLIC RIGHT-OF-WAY.
3. WHEN WASHING IS REQUIRED, IT SHALL BE DONE ON AN AREA STABILIZED WITH CRUSHED STONE THAT DRAINS INTO AN APPROVED SEDIMENT TRAP OR SEDIMENT BASIN, AS SHOWN ABOVE.
4. DRIVE ENTRANCES ONTO RESIDENTIAL LOTS WILL NOT BE REQUIRED TO HAVE THE SEDIMENT BARRIER SHOWN, BUT WHEEL WASHING MAY BE REQUIRED IF STABILIZED ENTRANCE IS NOT SUFFICIENT TO KEEP MUD FROM BEING TRACKED ONTO ADJACENT STREET. ENTRANCE SHALL EXTEND FROM BACK OF CURB TO DWELLING.



CITY OF WICHITA

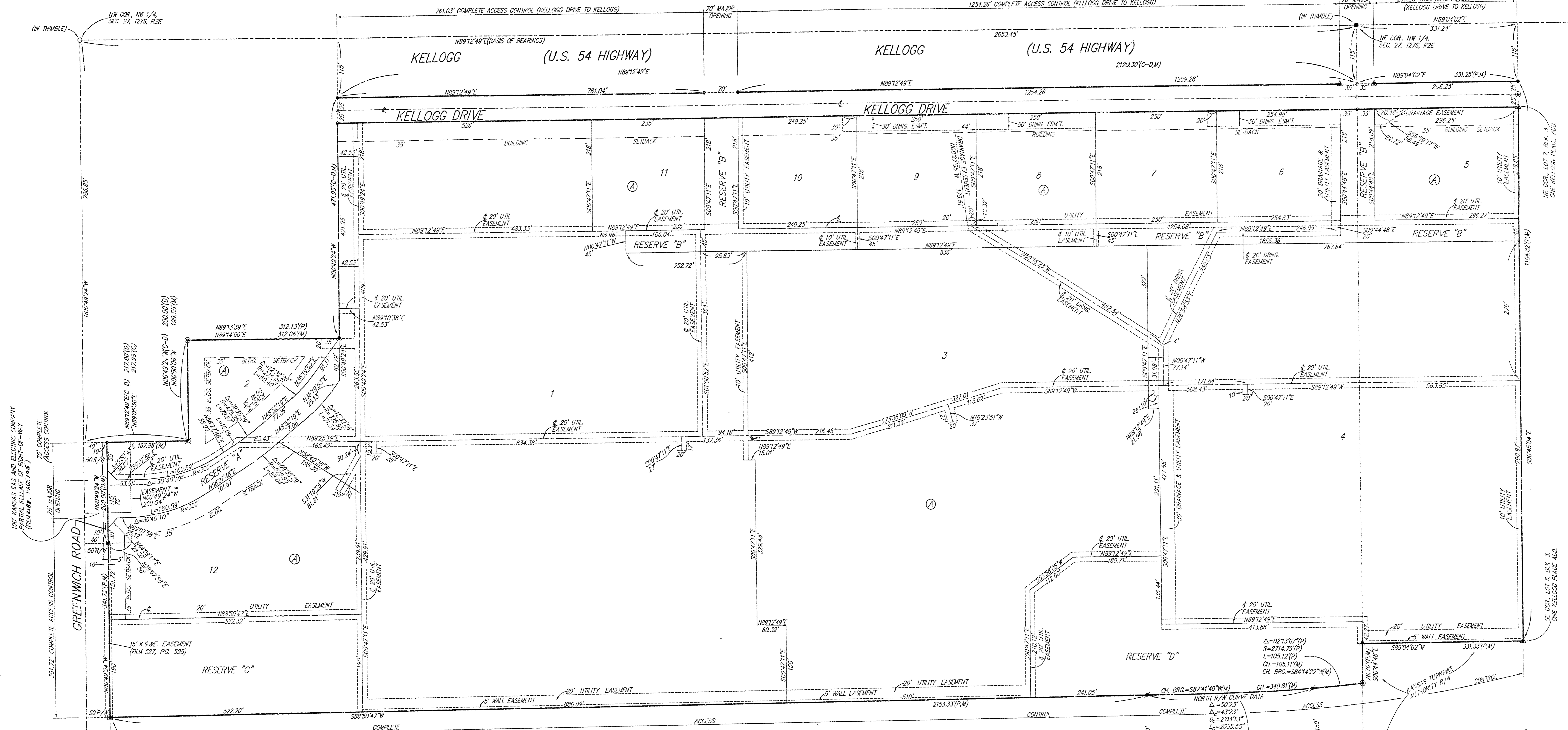
SOIL EROSION BMP DETAILS

CHRISTOPHER M. CARRIER, P.E.
STORM WATER ENGINEER

PROJECT NUMBER: 765682

DATE: MAY 2001

WICHITA, KANSAS, SUBDIVISION OF LOTS 5, 6, 7, 8, 9, 10, 11, 12, BLOCK A, KELLOGG DRIVE



KANSAS TURNPIKE AUTHORITY
CONDEMNATION CASE A-54126

NORTH R/W CURVE DATA
 $\Delta = 021.307(P)$
 $R = 2714.78(P)$
 $L = 105.12(P)$
 $CH = 105.11(M)$
 $CH = 586.43847422(N)$
 $CH = 340.81(M)$
 $\Delta = 021.307(P)$
 $R = 2714.78(P)$
 $L = 105.12(P)$
 $CH = 105.11(M)$
 $CH = 586.43847422(N)$
 $CH = 340.81(M)$

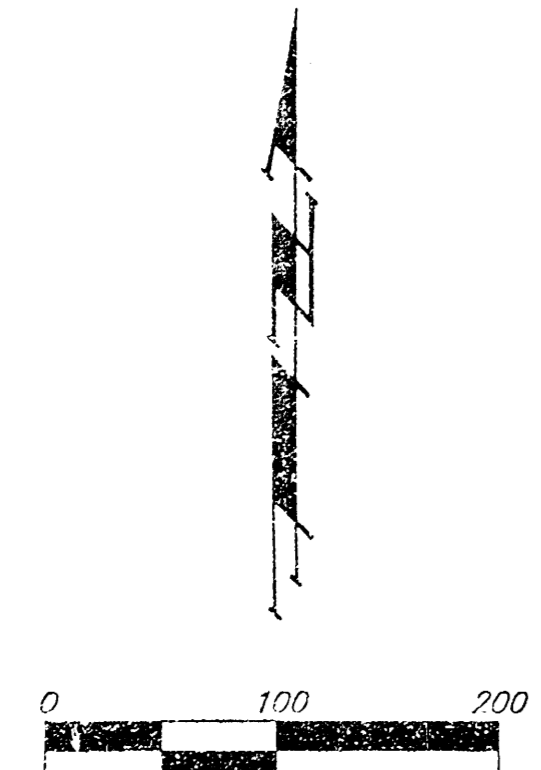
- = #4 REBAR W/ "BAUGHMAN" CAP (SET)
- = 3/4" IRON (FOUND)
- = #4 REBAR (FOUND)
- = #6 REBAR (FOUND)
- = #5 REBAR (FOUND)
- = #5 REBAR W/ "GOODEKOPF" CAP (FOUND)
- = #4 REBAR W/ "BAUGHMAN" CAP (FOUND)
- ⊗ = 1" IRON (FOUND)

NOTE:
A DRAINAGE PLAN HAS BEEN DEVELOPED FOR THIS SUBDIVISION AND IS ON FILE WITH THE CITY OF WICHITA, KANSAS. DRAINAGE INTENT SHALL BE AS SHOWN ON SAID PLAN. NO OBSTRUCTIONS WHICH WOULD IMPED THE FLOW OF THIS DRAINAGE PLAN SHALL BE ALLOWED.

- (M) = MEASURED
- (P) = PLATTED
- (D) = DESCRIBED
- (C) = CALCULATED
- (C-D) = CALCULATED PER DESCRIBED INFO.

LOT	BLOCK	ELEVATION
1	A	171.0
3	A	172.0
4	A	172.0
12	A	168.0

BENCHMARK:
CITY OF WICHITA BENCHMARK - SE. CORNER OF INTERSECTION OF GREENWICH AND KELLOGG, NW CORNER OF LIGHT POLE BASE - 48.60' N.W. OF C. OF 55' MANHOLE 48.70' S. OF C. OF TRAFFIC SIGNAL MANHOLE IN KELLOGG MEDIAN 70.50' E. OF BACK OF E. CURB ON E. SIDE OF MEDIAN IN GREENWICH ROAD. ELEV. = 164.78 CITY DATUM (1352.18 NGVD)



A PORTION OF LOTS 2 AND 12, BLOCK A, ARE COVERED BY K.G.B.E. RIGHT-OF-WAY EASEMENT FROM 3/8" 24" 18" WHICH IS IN THE RECORDS (IF BEING CONFIRMED THIS 13TH DAY OF MARCH, 2001).

ADDITIONAL BUILDING SETBACKS & OTHER REQUIREMENTS PER C.U.P. DP-196, AMENDMENT #1.