

STORM WATER SEWER IMPROVEMENTS

to serve

REGENCY PARK ADDITION

LOT 5, BLOCK 2

CITY OF WICHITA, KANSAS

NEIL GABLE, P.E. City Engineer

Private Project Number

1875 PPS (607861)

August 2003

SCALE:
1" = 20' Horizontal
1" = 5' Vertical

GENERAL NOTES:

1. Contractor will be required to provide notice to utility companies a minimum of forty-eight (48) hours prior to any excavation, as follows:

- Kansas One-Call 687-2470
- The Contractor must notify the following in case of an emergency:
- Cox Communications 262-4270
- Kansas Gas Service Company 1-888-482-4950
- Westar Energy (Electric) 363-8650
- Aquila Energy (Gas) 1-800-303-0357
- Southwestern Bell Telephone Co. 1-800-286-8313
- City of Wichita Water Dept. (Water) 258-4908
- City of Wichita Sewer Maint. (SS) 268-4024
- City of Wichita Storm Sewer Maint. 263-4090
- City of Wichita Traffic Maint. 265-4034

2. Utility service lines, poles, valve boxes, meters, et cetera are to be adjusted as necessary by others prior to construction unless the plans specifically call for their adjustment by the Contractor or unless the plans specifically identify a utility to be adjusted by its owner during construction. Existing utilities and their location, as shown on the plans represent the best information obtainable for design and shall be field verified. The contractor will be required to work around existing utilities within the right-of-way which do not conflict with proposed construction.

3. Contractor shall not start work on the project until the project inspector is assigned to the project and is present on the site. Contractor shall not start on the project until all necessary bonds and permits have been obtained. Any work done without inspection will be required to be uncovered for inspection.

4. Rubble from the removal of miscellaneous structures and excess excavation which is to be wasted shall be disposed of on sites to be provided by the Contractor. These sites shall be approved by the Engineer as to suitability, appearance and site location. Locations that, in the opinion of the Engineer, will leave an unsightly appearance will not be approved. All disposal sites must be approved by the Kansas Department of Health and Environment. Material either stockpiled or disposed of in a flood plain would require a Kansas State Board of Agriculture permit. Any material dumped in waters of the United States or wetlands is subject to U.S. Corps. of Engineers permitting regulations. Any material buried or stockpiled beyond approved construction limits would require additional archaeological investigations unless buried in a previously approved borrow location.

5. All storm sewers shall be installed in accordance with the most recent edition of City of Wichita, Kansas Standard Specifications for the Construction of City Projects.

6. All R/W areas disturbed by construction operations shall be seeded with K-33 fescue at a rate of 8 lbs. per 1000 sq. feet or as per city specs. Contractor to prepare ground to city specifications.

Benchmarks:

Top of Brass Disc in Top of North Curb of Regency Park, Approximately 268.9' East of the West Property Line of Lot 5, Block 2, Regency Park Addition.

Elevation = 192.03 (City Datum)

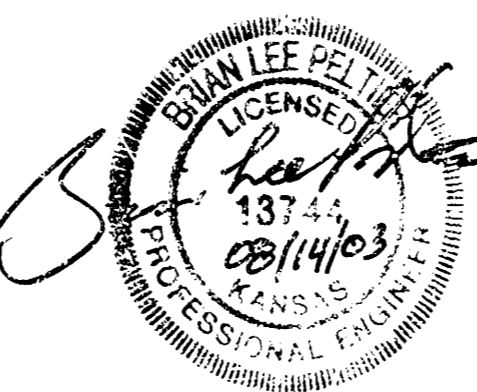
Index

- Cover/Plan/Profile 1
- Standard Drop Inlet Detail 2
- Copy of Plat 3

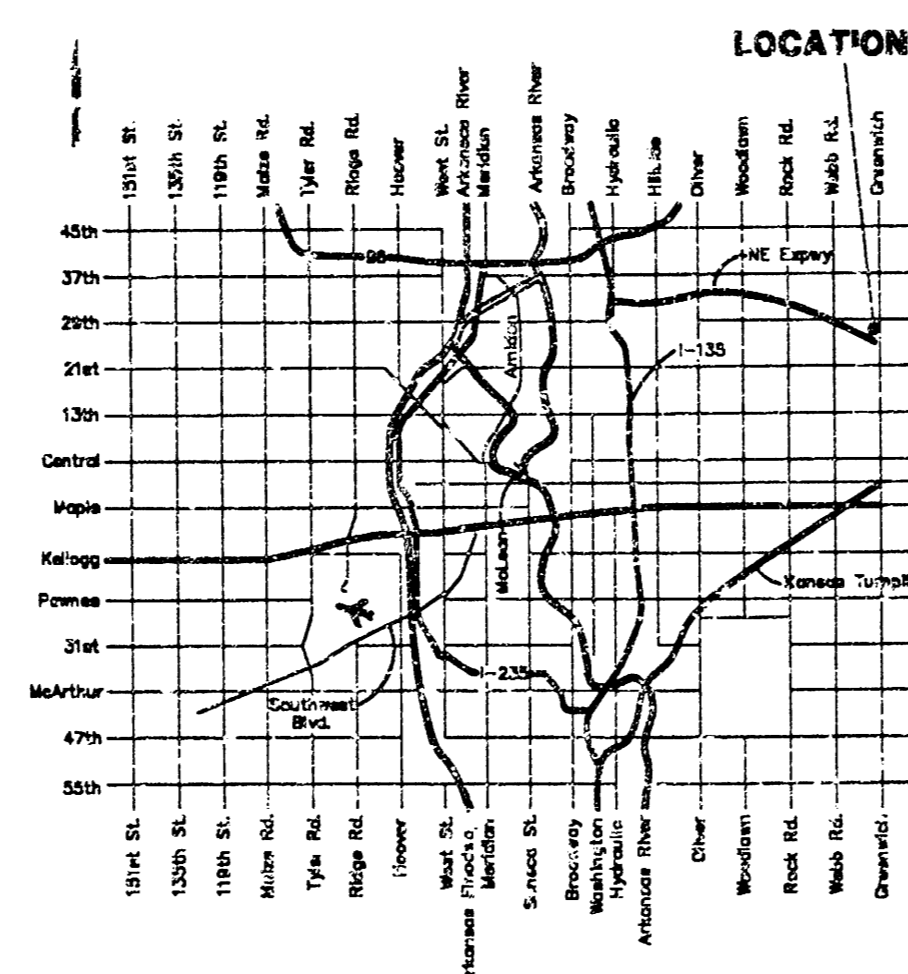
Legal Description

Lot 5, Block 2, Regency Park Addition, Wichita, Sedgwick County, Kansas.

Booked
D-498
9/29/03
RDL



Vicinity Map

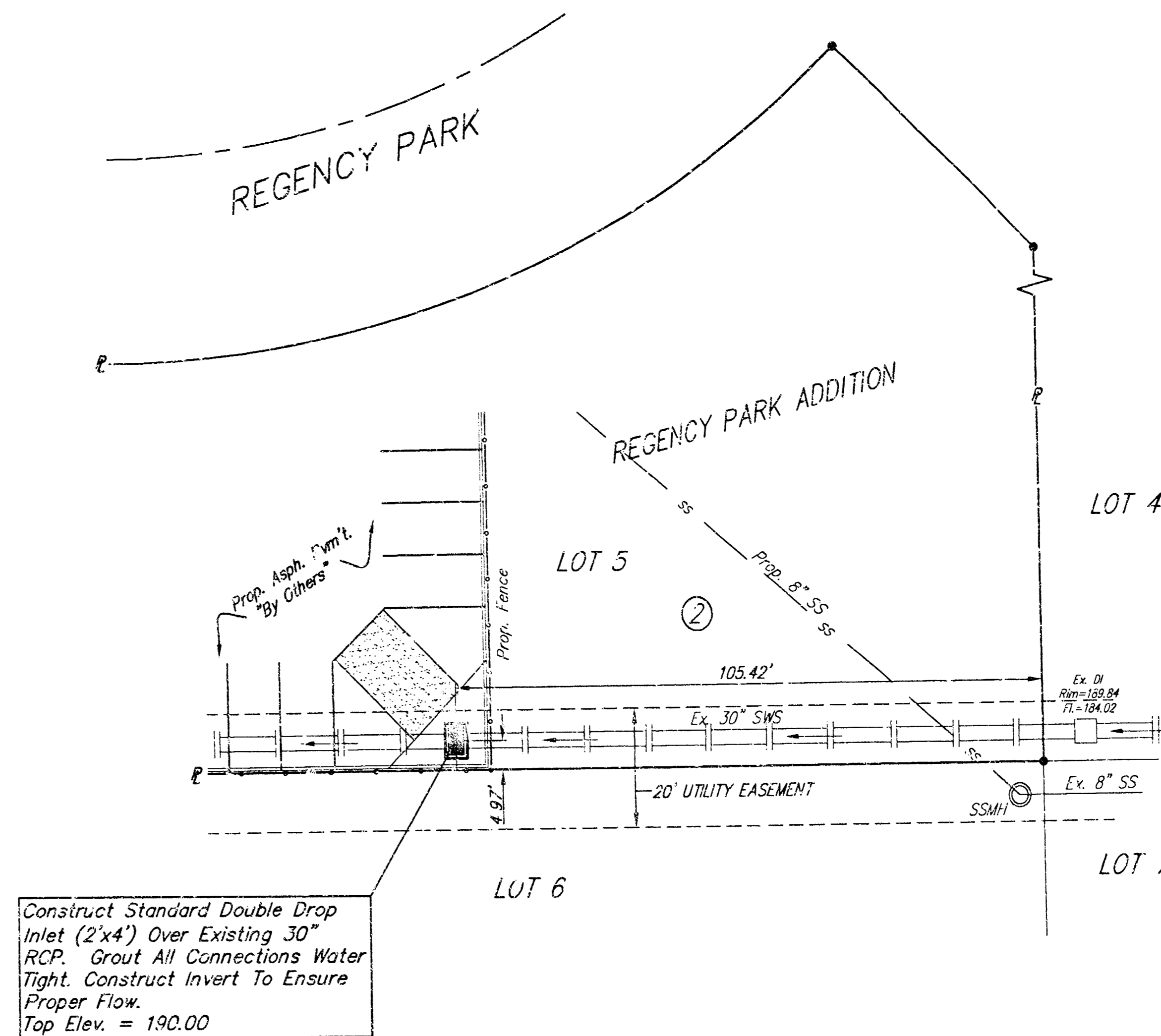


APPROVED AS NOTED
BY CITY ENGINEER OF WICHITA

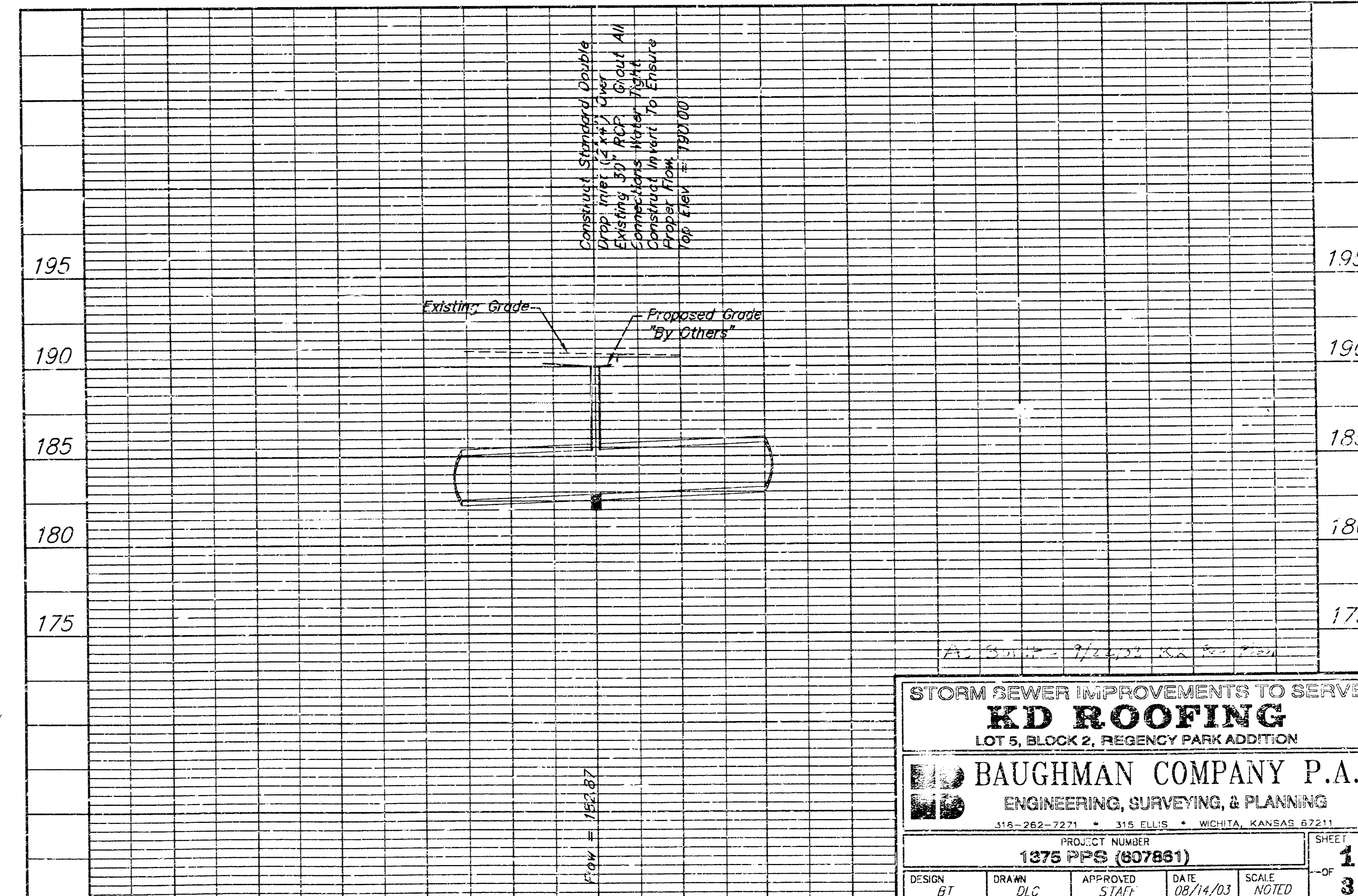
Storm Sewers VRH 8/20/03

NOTE TO CONTRACTORS

Installation, inspection, and testing for this project is to be provided by a Licensed Consulting Engineering Firm under contract with the Owner/Developer. Said inspection to be in accordance with the City of Wichita standard construction engineering practices and certified by a Licensed Professional Engineer. No work shall be performed in dedicated easements or public right-of-way by the Contractor without such inspection nor shall any work be commenced without written authorization by the City Engineer. All Construction and Materials shall comply with the City of Wichita Specifications and Standards (on file and available in the City Engineer's Office).



Construct Standard Double Drop Inlet (2x4') Over Existing 30" RCP. Grout All Connections Water Tight. Construct Invert To Ensure Proper Flow. Top Elev. = 190.00



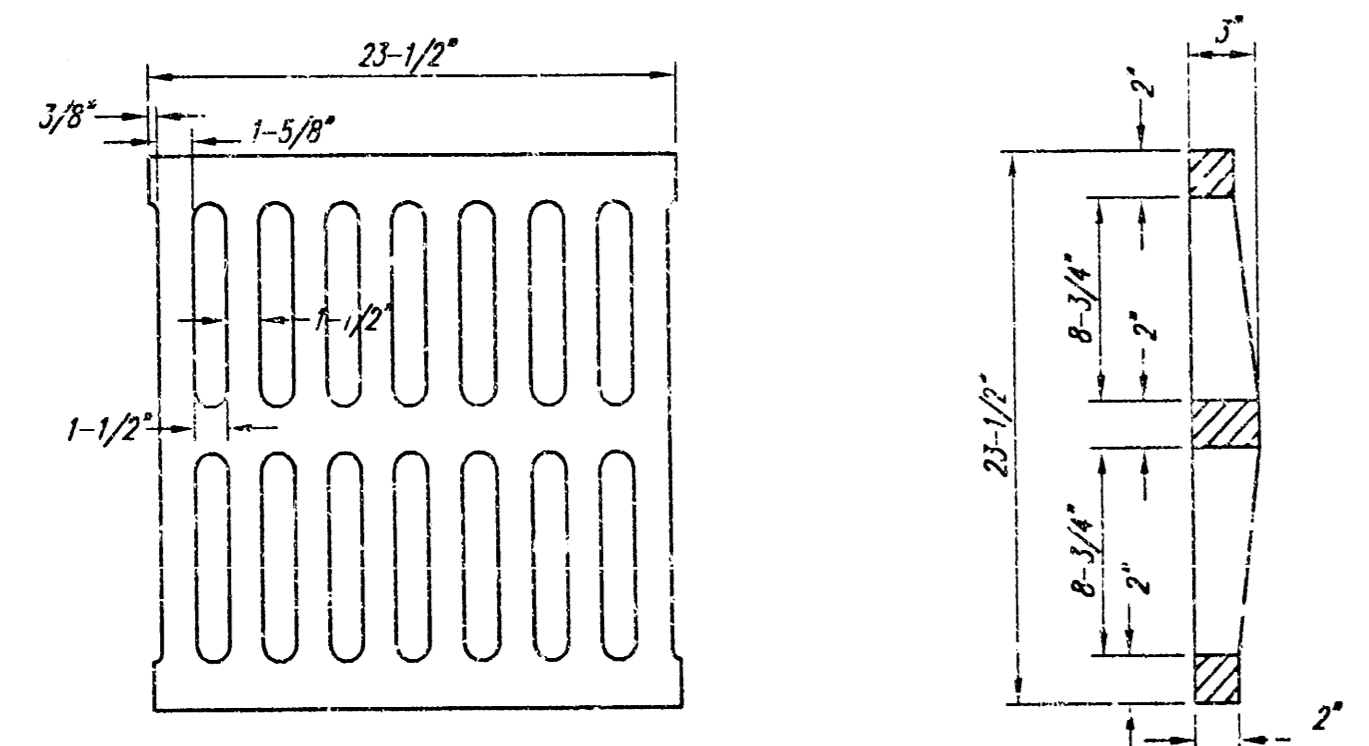
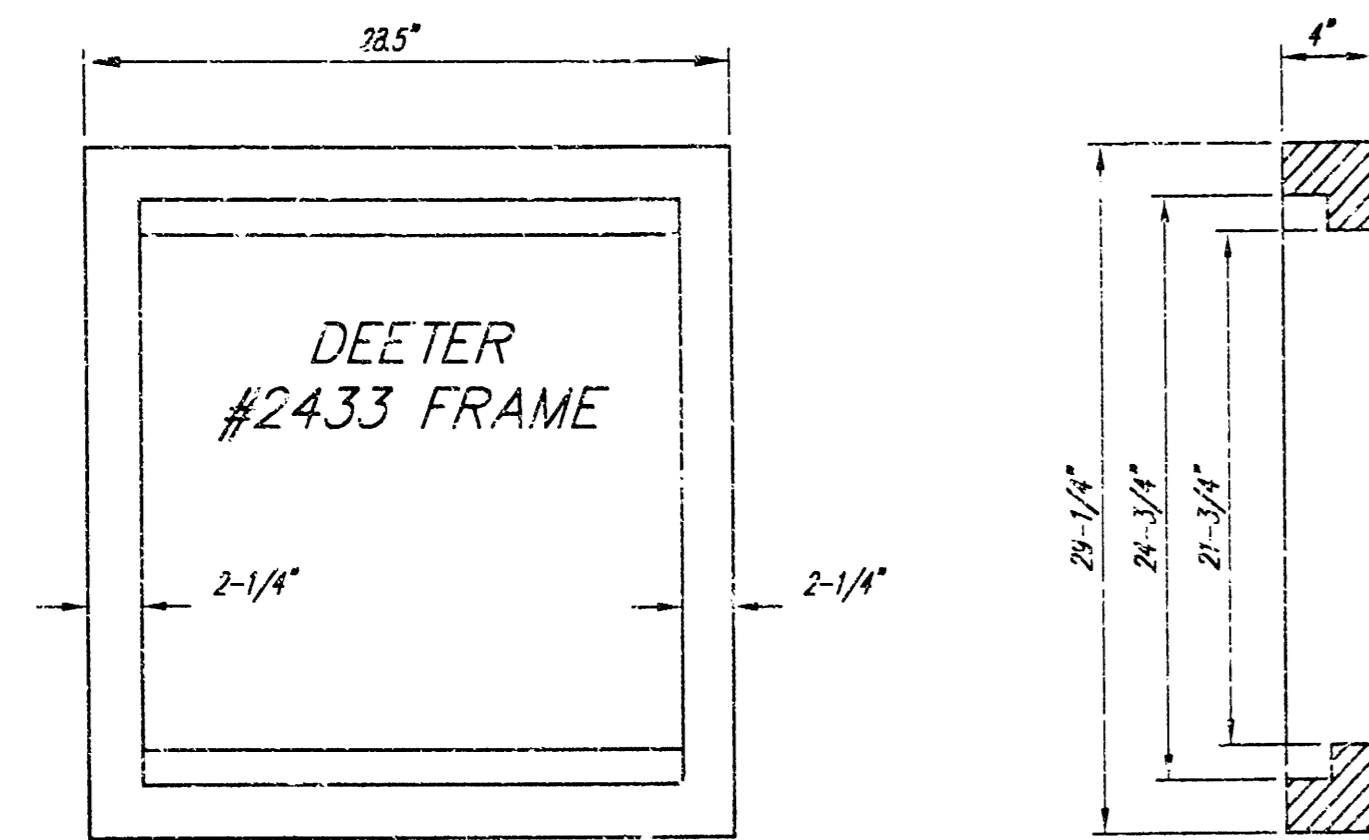
STORM SEWER IMPROVEMENTS TO SERVE
KD ROOFING
LOT 5, BLOCK 2, REGENCY PARK ADDITION

BAUGHMAN COMPANY P.A.
ENGINEERING, SURVEYING, & PLANNING
316-262-7271 • 315 ELLIS • WICHITA, KANSAS 67211

PROJECT NUMBER
1875 PPS (607861)

DESIGN: BT DRAWN: DLC APPROVED: STAFF DATE: 08/14/03 SCALE: NOTED

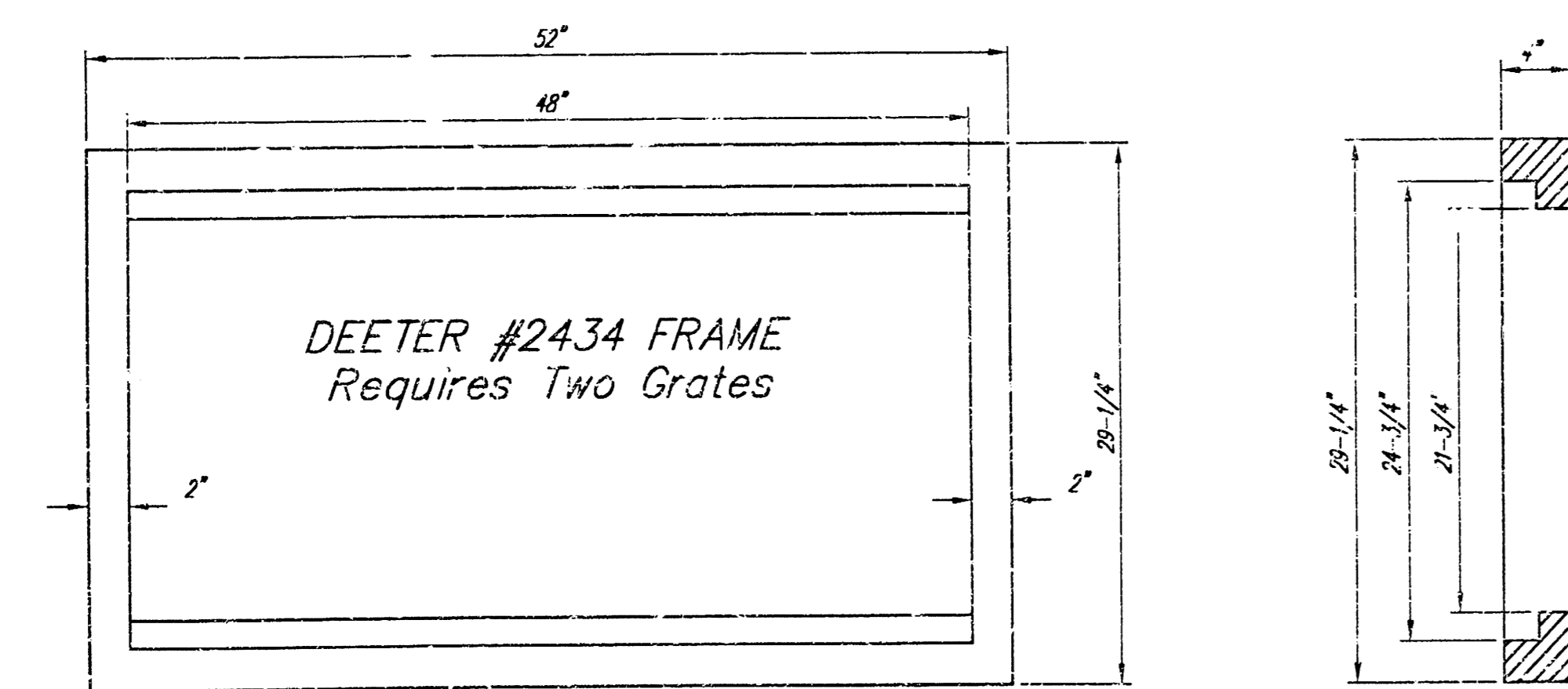
SHEET **1** OF **3**



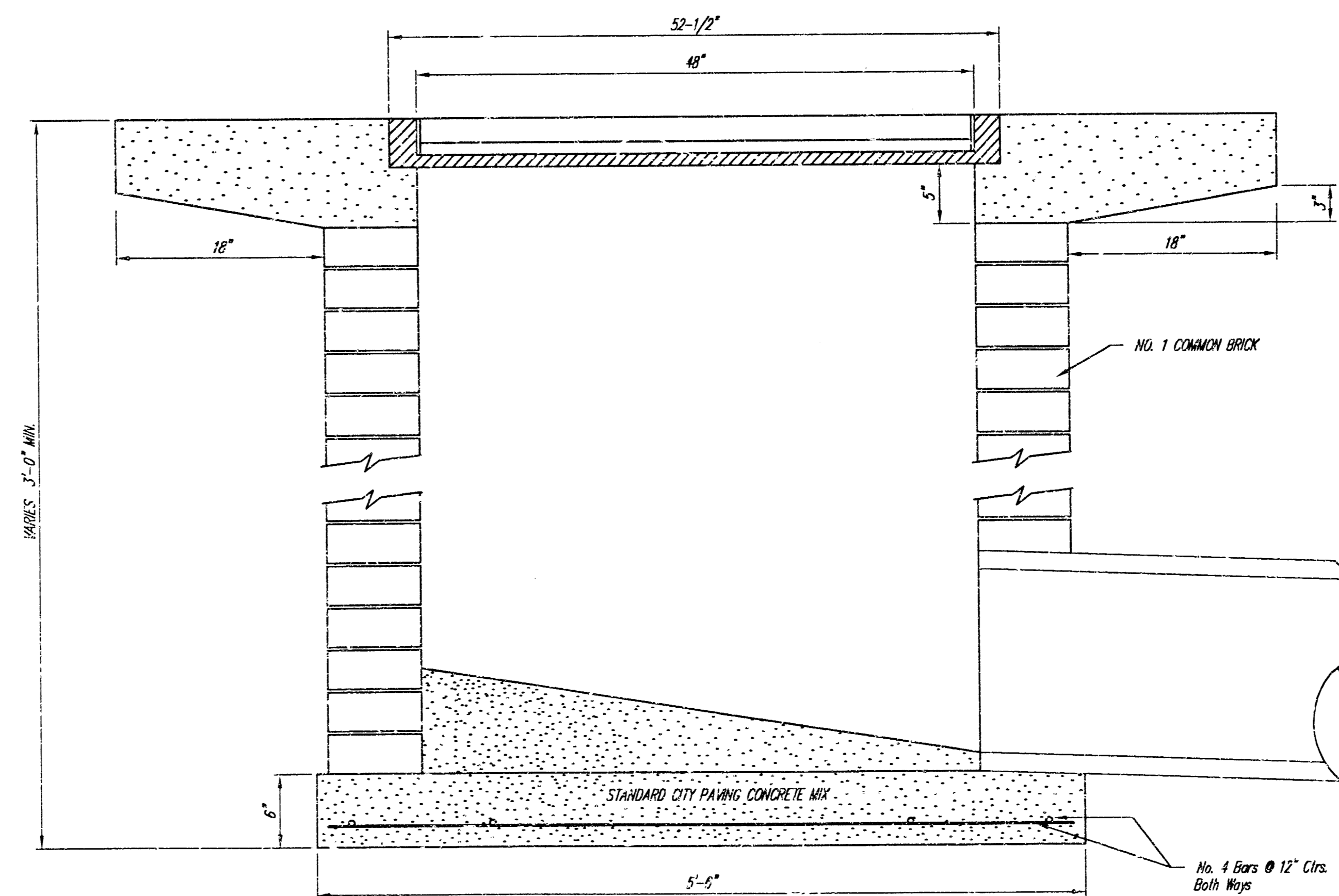
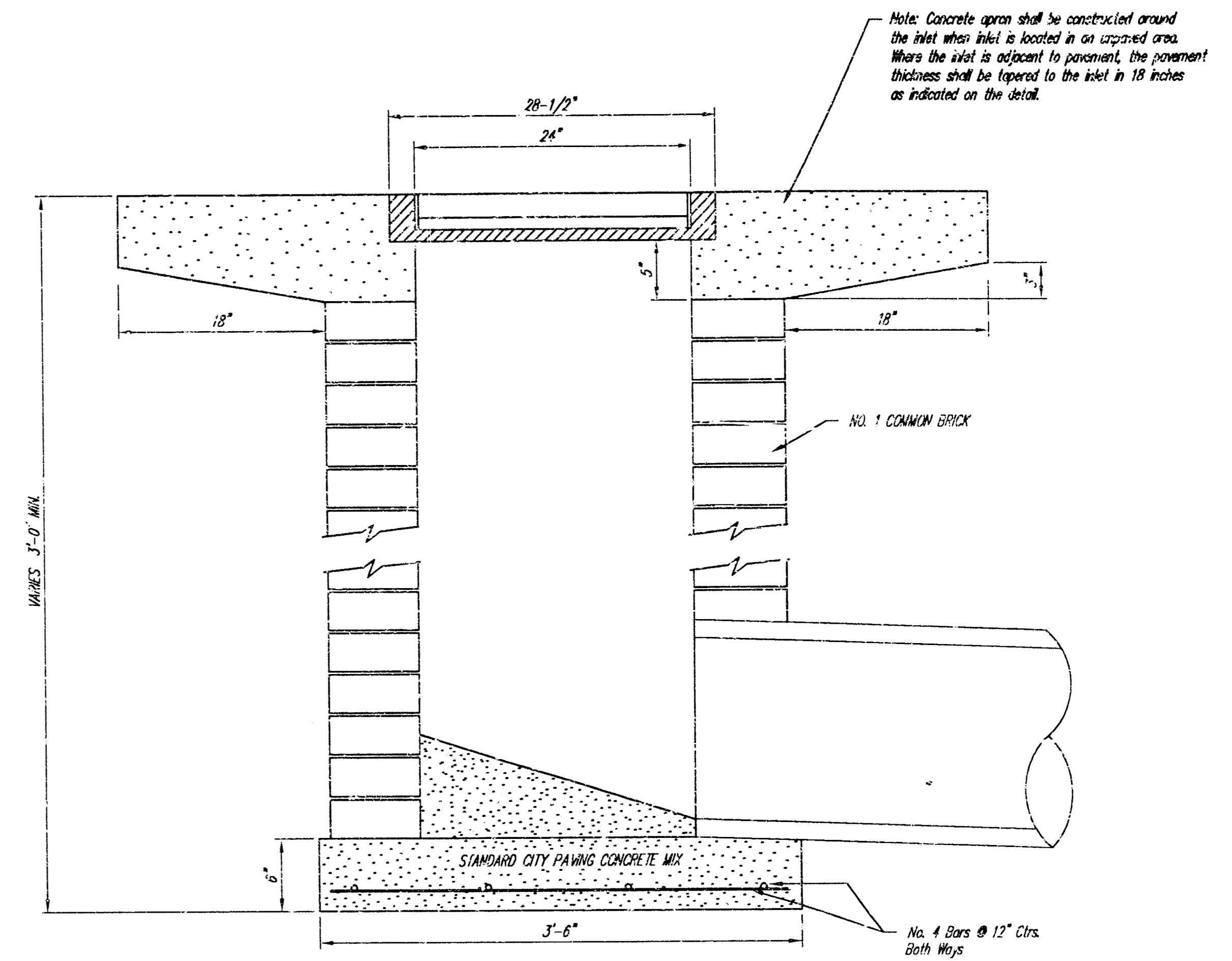
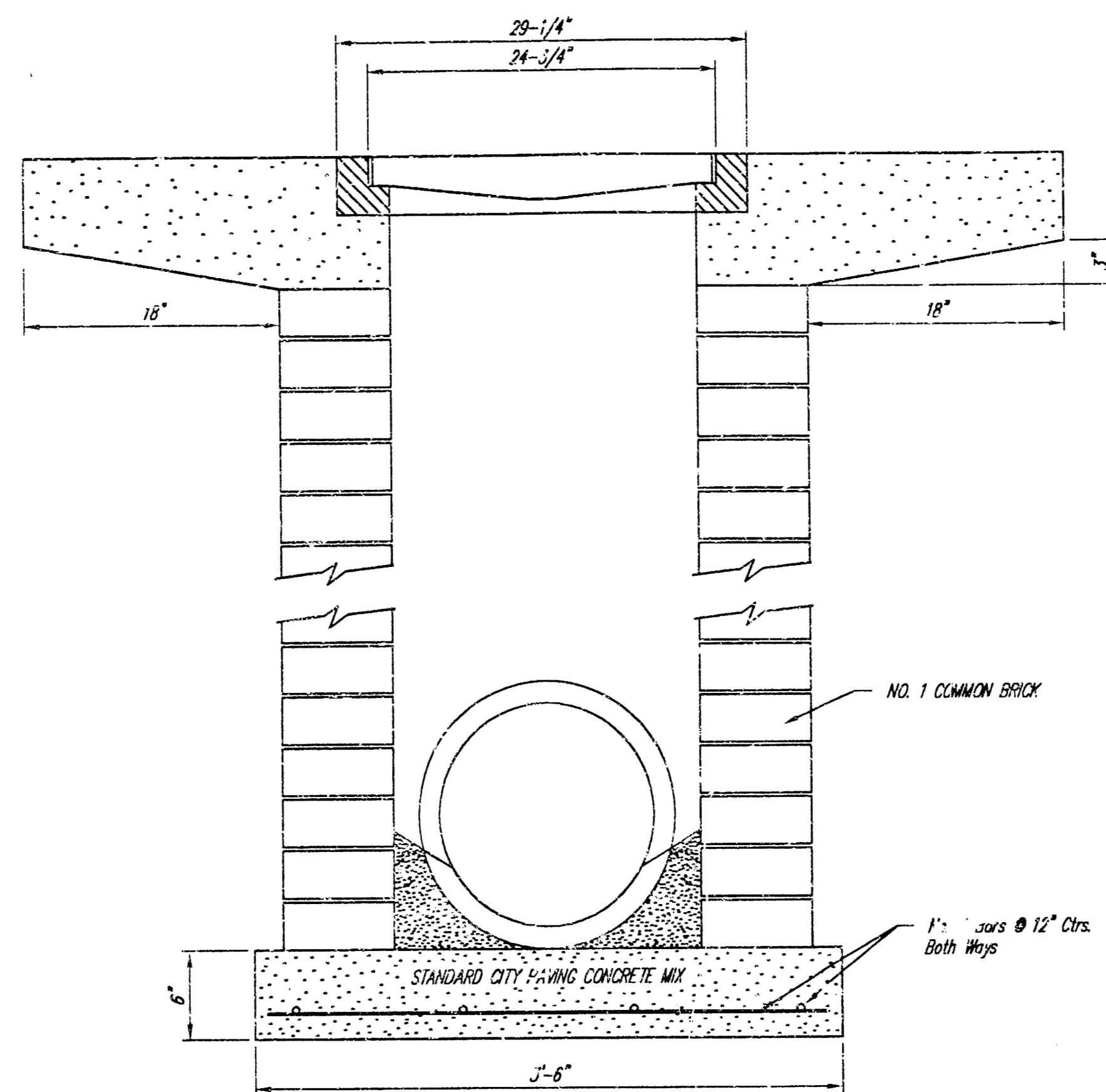
DEETER #2433 GRATE

24" x 24" Frame and Grate Detail

NOTE: Grates shall be imprinted on the top surface with "CITY OF WICHITA" using letters at least 1" in height. Other marking methods may be approved by the engineer.



Double 24" x 24" Frame Detail



STANDARD				
DROP INLET				
DETAIL				
BAUGHMAN COMPANY P.A.				
ENGINEERING, SURVEYING, & PLANNING				
116-262-7221 • 315 ELLIS • WICHITA, KANSAS 67211				
PROJECT NUMBER				
1375 PPS (607861)				
DESIGN	DRAWN	APPROVED	DATE	SCALE
STAFF	STAFF	STAFF	8/14/03	NONE
				SHEET
				3

DETAILED COMPANY 03-05-1537

