

STORM WATER SEWER IMPROVEMENTS TO SERVE

RUSTY ECK FORD
7310 E. KELLOGG DRIVE

Project Number
1374 PPS (607861)

CITY OF WICHITA, KANSAS

Neil D. Cable, P. E., City Engineer

GENERAL NOTES

- Contractor will be required to provide notice to utility companies a minimum of twenty-four (24) hours prior to any excavation, as follows:
 Kansas One-Call 687-2470
 The Contractor must notify the following in case of an emergency:
 Cox Communications 262-4270
 or 263-2061
 Westar Energy 383-8600
 SBC 1-571-2611
 City of Wichita Water Department 268-4908
 City of Wichita Sewer Department 268-4071
 Kansas Gas Service 832-3168
 or 832-3167
- Exist. utilities and their locations, as shown on the plans, represent the best information obtainable for design. Location information has been obtained from the various utility companies and is either from company record drawings or company-provided field locations. The Contractor will be required to work around existing utilities which do not conflict with proposed construction.
- The Contractor to verify utility locations prior to construction of this project.
- Utility service and installation shall be coordinated with the respective utility owners. Contacts are:
 Kansas Gas Service Jim Stoltz 832-3122
 Westar Energy Russ Chitwood 261-6251
 Wichita Water Chuck Steven 268-4555
 Joe Botinelly 268-4908
 SBC Jim Tobin 268-2759
- All areas disturbed by construction shall be seeded with rye Rebel II Fescure grass at a rate of 350 lbs./acre immediately following construction in that area.
- Traffic affected by the construction of this project shall be handled in accordance with the latest edition of the Manual on Uniform Traffic Control Devices.
- All lawn/turf areas disturbed by construction of proposed improvements shall be restored with the same grass/ sod as existing. Restoration of disturbed areas shall include, but not be limited to, top soil preparation, seeding, mulch and/or reseeding. All seeding/sodding work shall be in accordance with the City of Wichita standard specifications and the City of Wichita administrative regulation No. AR78 which governs cleanup and replacement following construction. All costs for this work shall be subsidiary to the lump sum price bid for "Site Restoration."
- Cuts made to paved surfaces on public property will be repaired by the City's contractor and charged against the owner/applicant. Unit repair prices are available from the City at 268-4418. A surcharge may be applicable: call 268-4418 for details.

BENCHMARK:

□ Cut SW Cor. Bridge
 86.29 ft. W & 41.54 ft. S of
 Centerline of Intersection
 Armour & Kellogg
 Ⓢ Armour and Douglas
 NE Corner PC&C
 Elev.=1354.73
 Elev.=167.33 (City Datum)

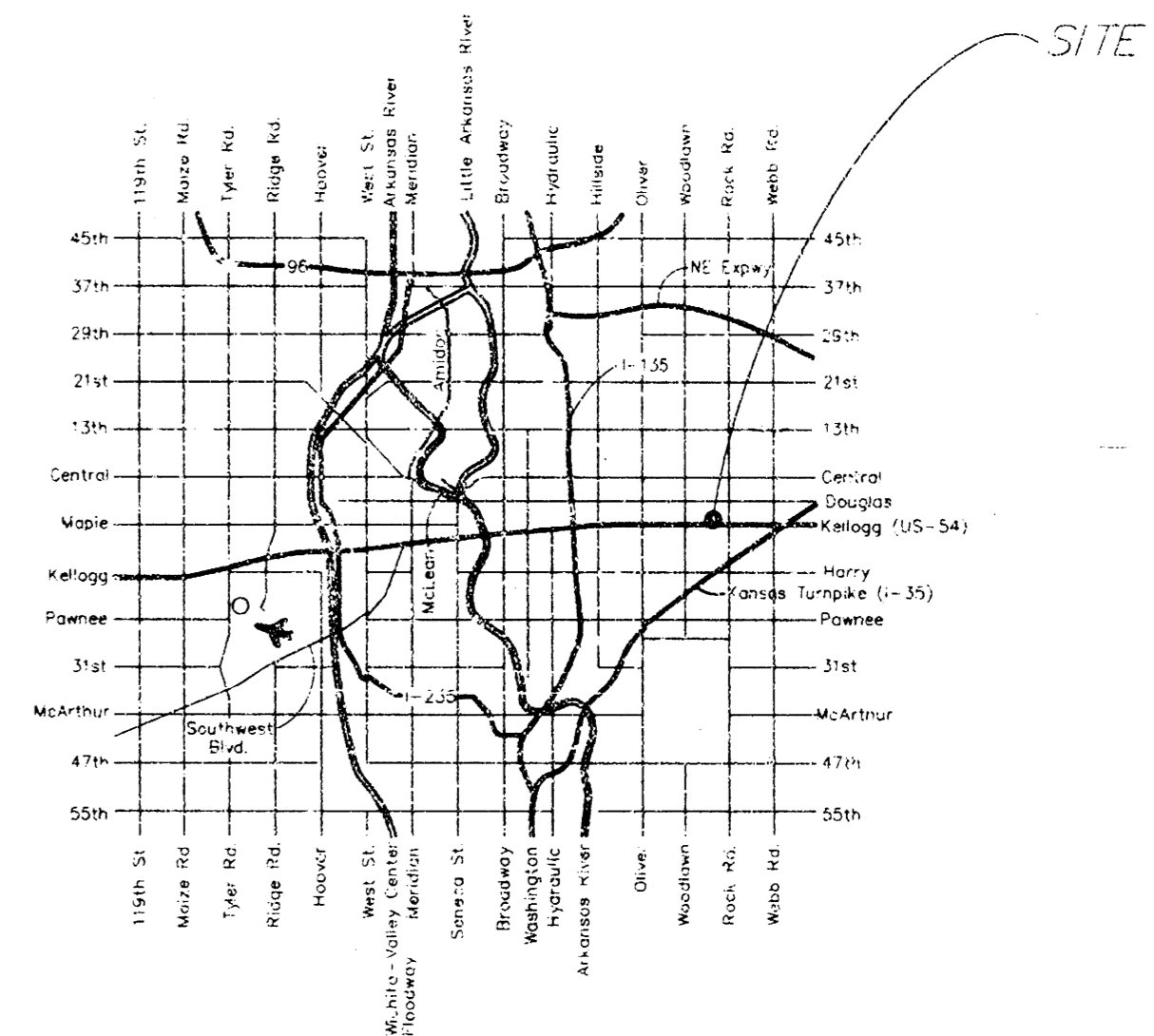
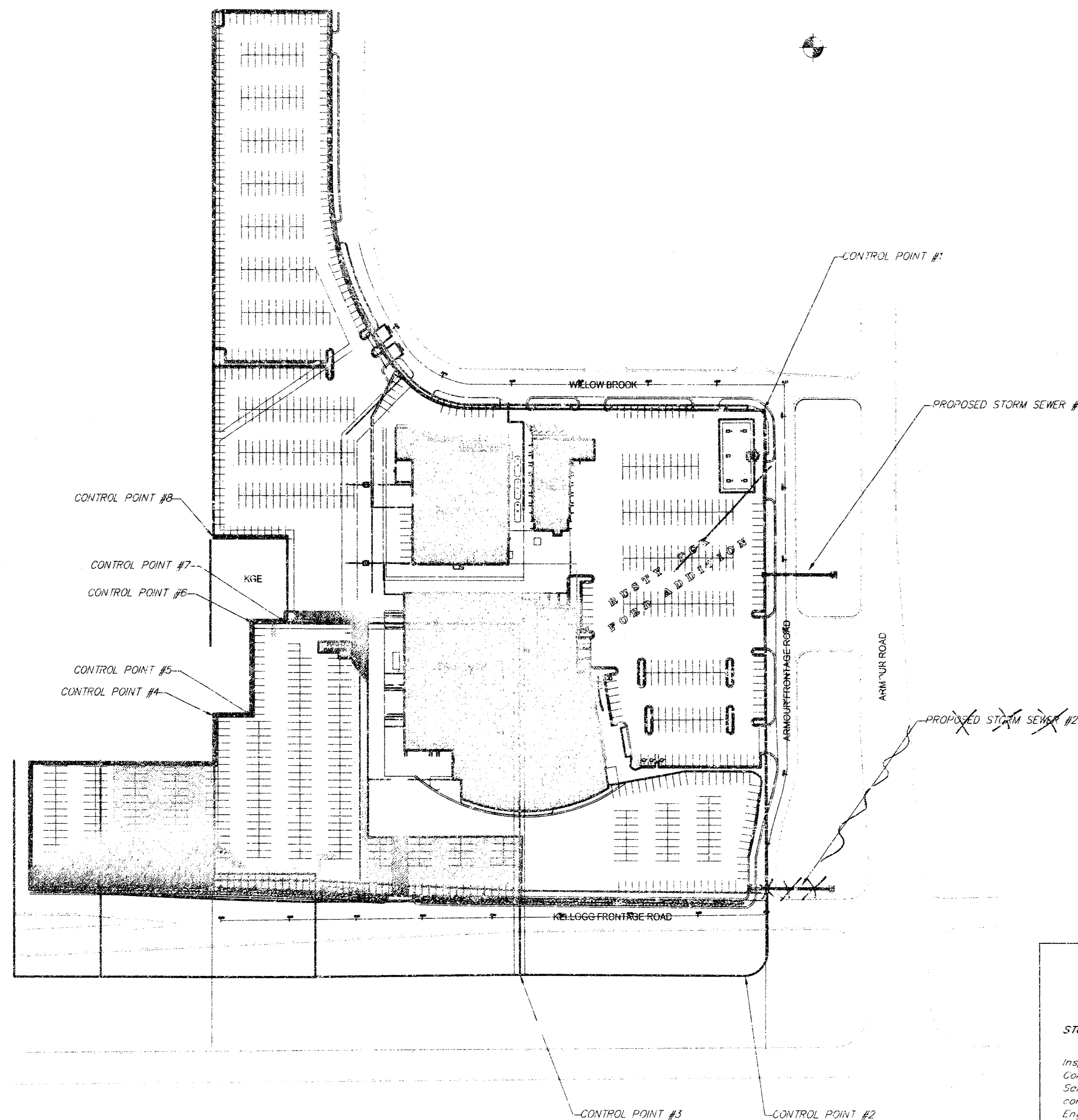
INDEX

- 1 Cover
- 2-3 SWS Plan and Profile
- 4-6 Inlet Detail's

CONTROL POINTS

CP #1, 3/4" IP, N=5756.0765, E=9999.9901
 CP #2, 1/2" IP, N=4966.2515, E=9966.7849
 CP #3, 3/4" IP, N=4968.6081, E=9636.8339
 CP #4, 3/4" IP, N=5331.6496, E=9188.4179
 CP #5, 3/4" IP, N=5331.5940, E=9246.1060
 CP #6, 1/2" IP, N=5461.3135, E=9246.9371
 CP #7, 1/2" IP, N=3460.7403, E=9297.0710
 CP #8, 3/4" IP, N=5520.8745, E=9189.5946

AS-BUILT
 8/16/04
 Date
 Drawn by
 Signed



LOCATION MAP

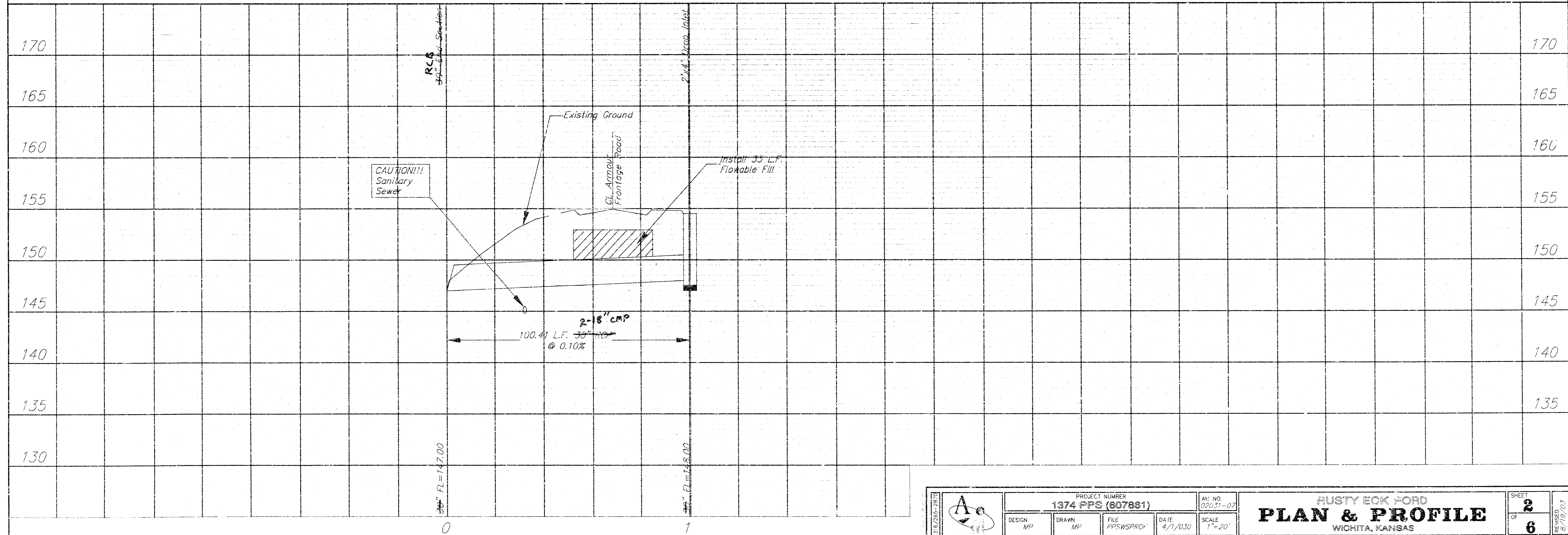
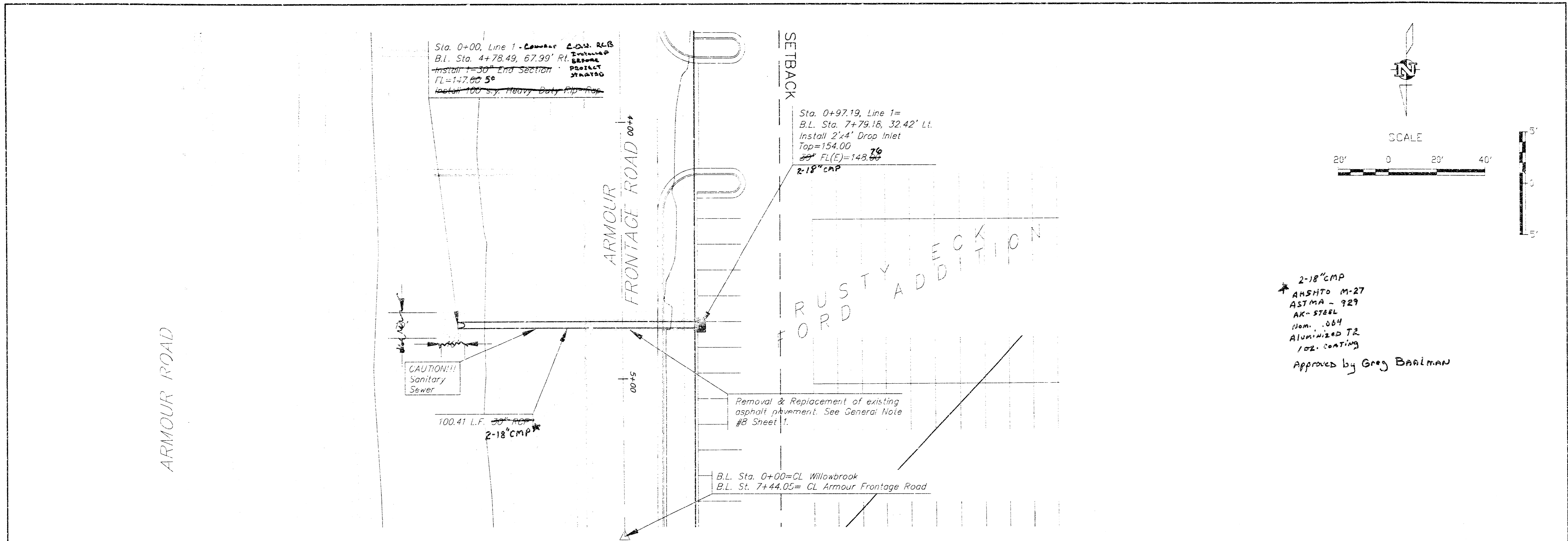
APPROVED AS NOTED BY CITY ENGINEER OF WICHITA

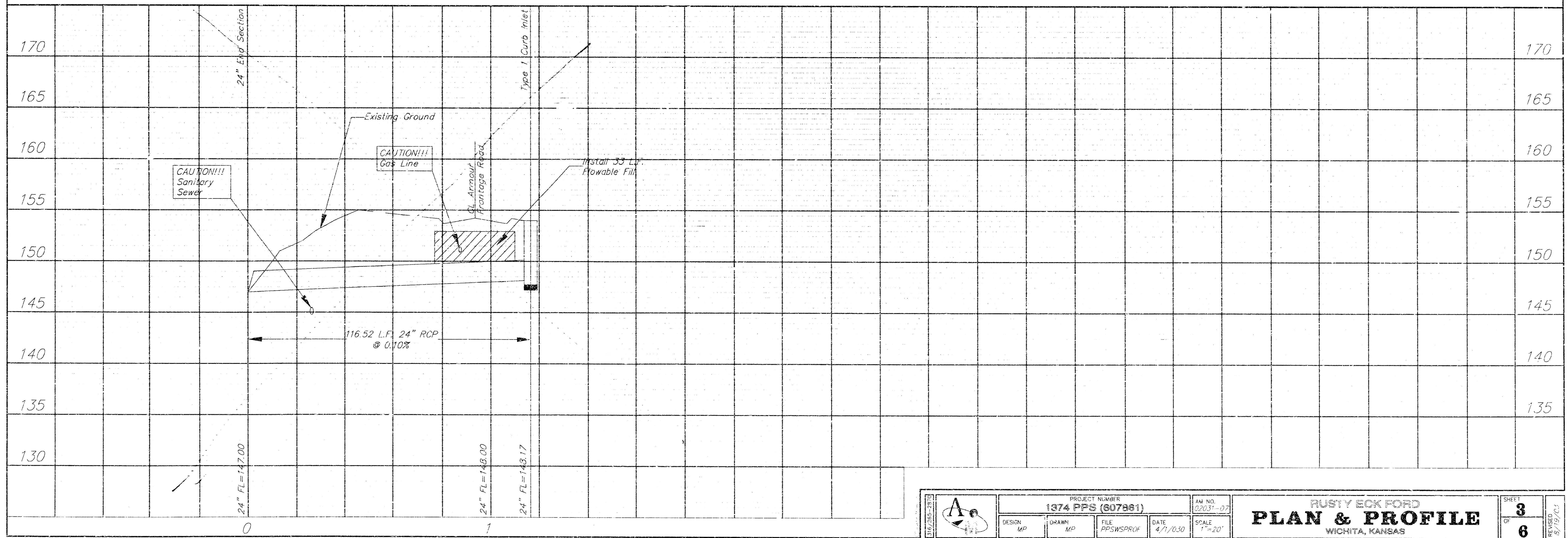
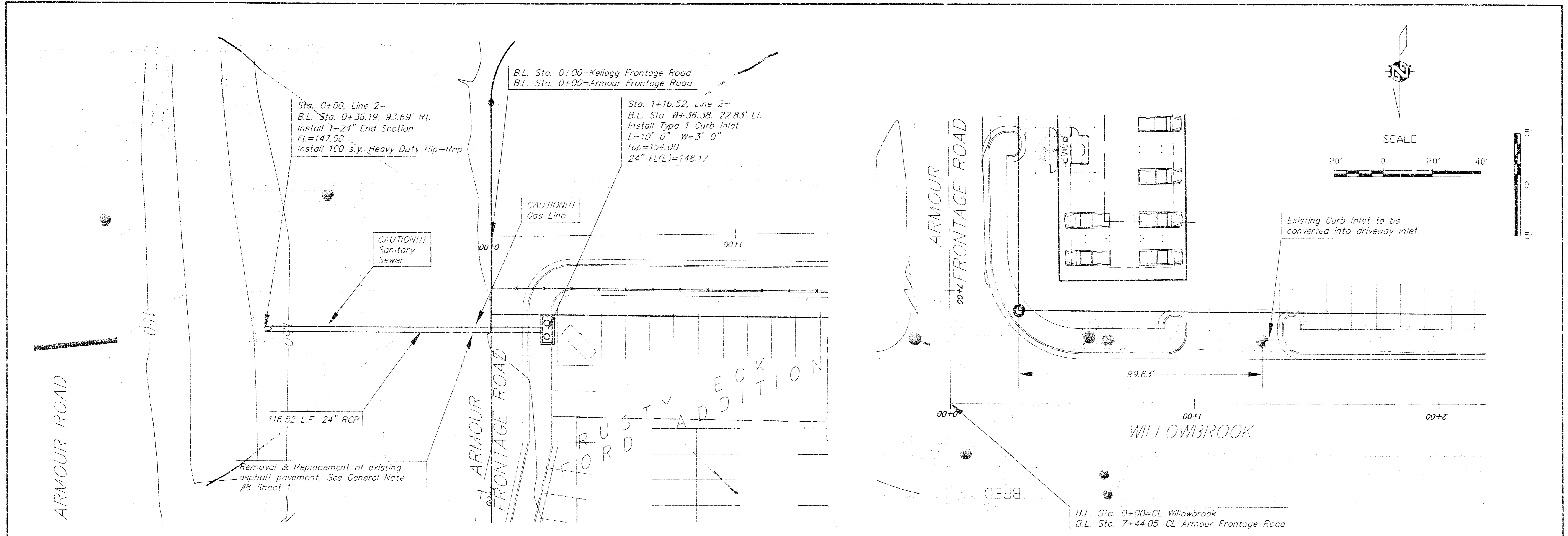
STORM SEWERS URH 8/20/03

Inspection and testing for this project are to be provided by a Licensed Consulting Engineering firm under contract with the Owner/Developer. Said inspection is to be in accordance with the City of Wichita standard construction engineering practices and certified by a Licensed Professional Engineer. No work shall be performed in dedicated easements or public right-of-way by the Contractor without such inspection nor shall work be commenced without written authorization by the City Engineer. All construction and materials shall comply with the City of Wichita Specifications and Standards (on file and available in the City Engineer's Office).

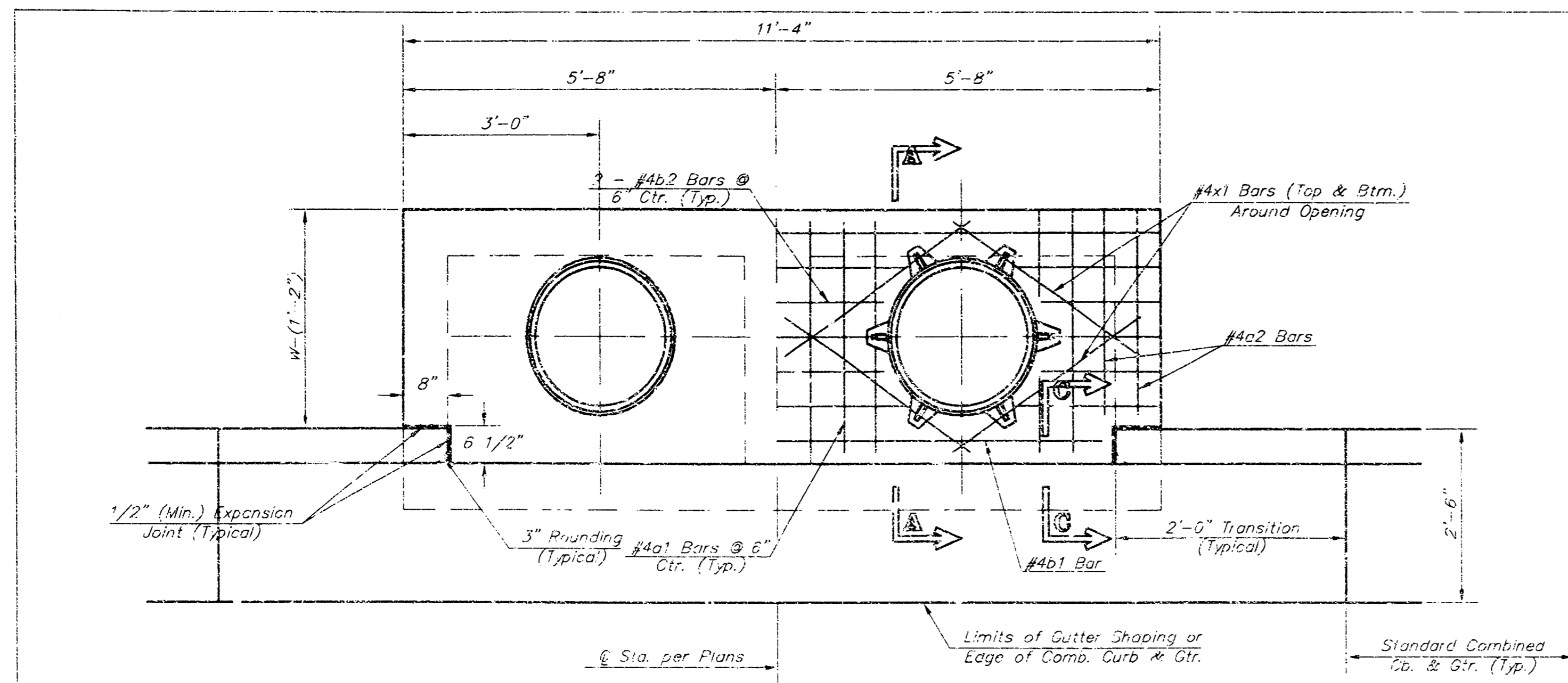
Stamp: AUG 16 2004
 Signature: [Handwritten Signature]

ENGINEERING SERVICES
 142 N. Emporia Wichita, KS 67202
 316/265-2870 Fax: 316/265-2859



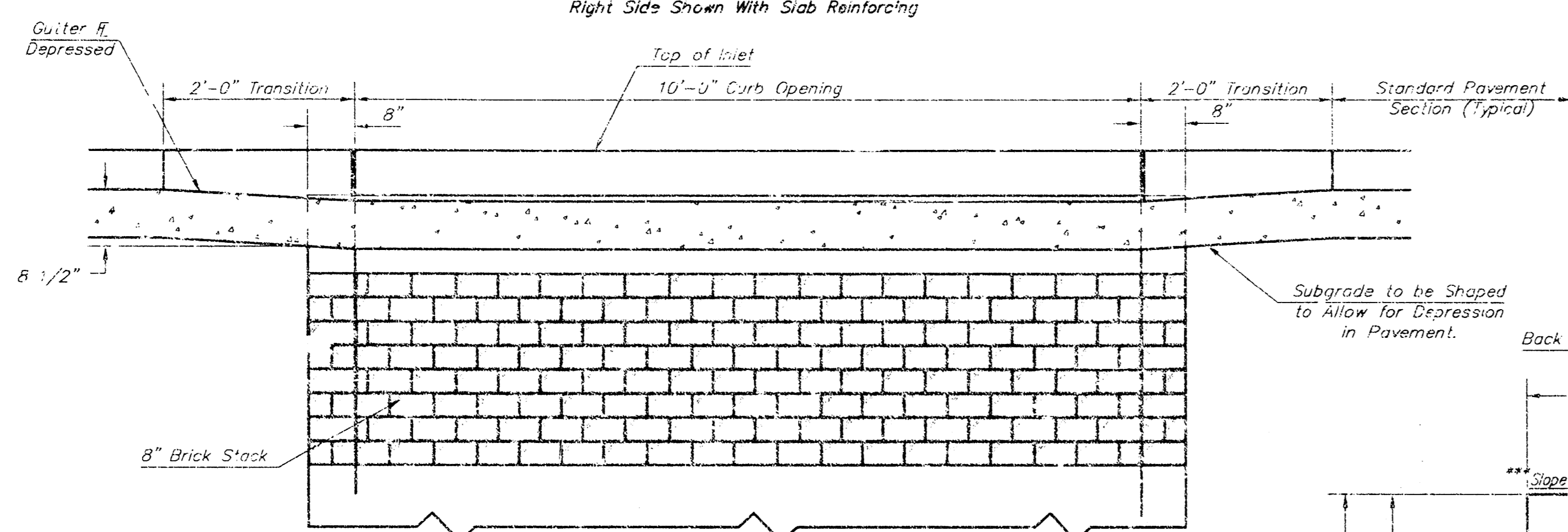


		PROJECT NUMBER 1374 PFS (807881)	AM. NO. 22031-07	SHEET 3
DESIGN MP	DRAWN MP	FILE PFSWSPRUF	DATE 4/1/03	SCALE 1"=20'
RUSTY ECK FORD PLAN & PROFILE WICHITA, KANSAS			SHEET 6	DATE 5/19/03

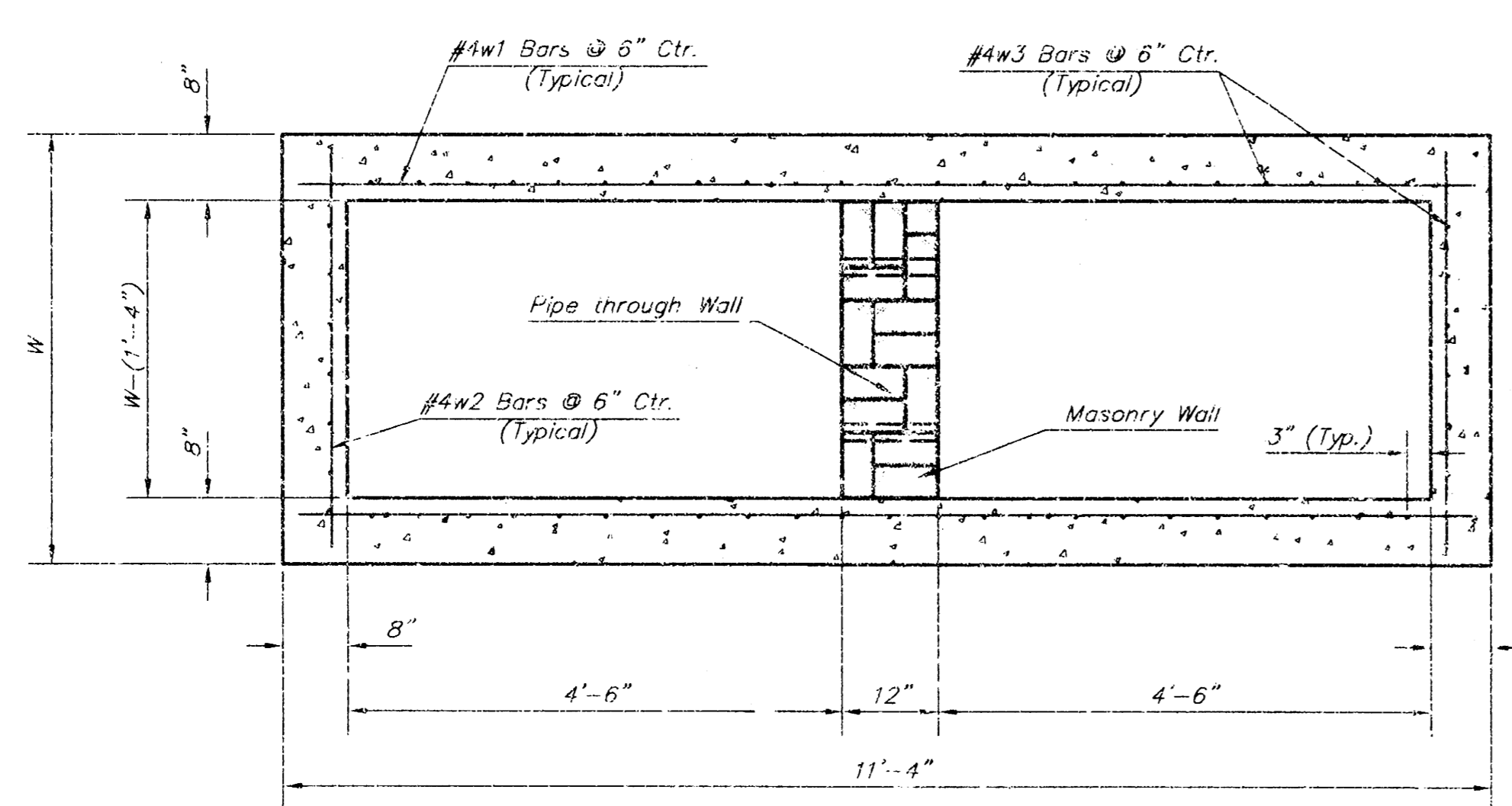


PLAN

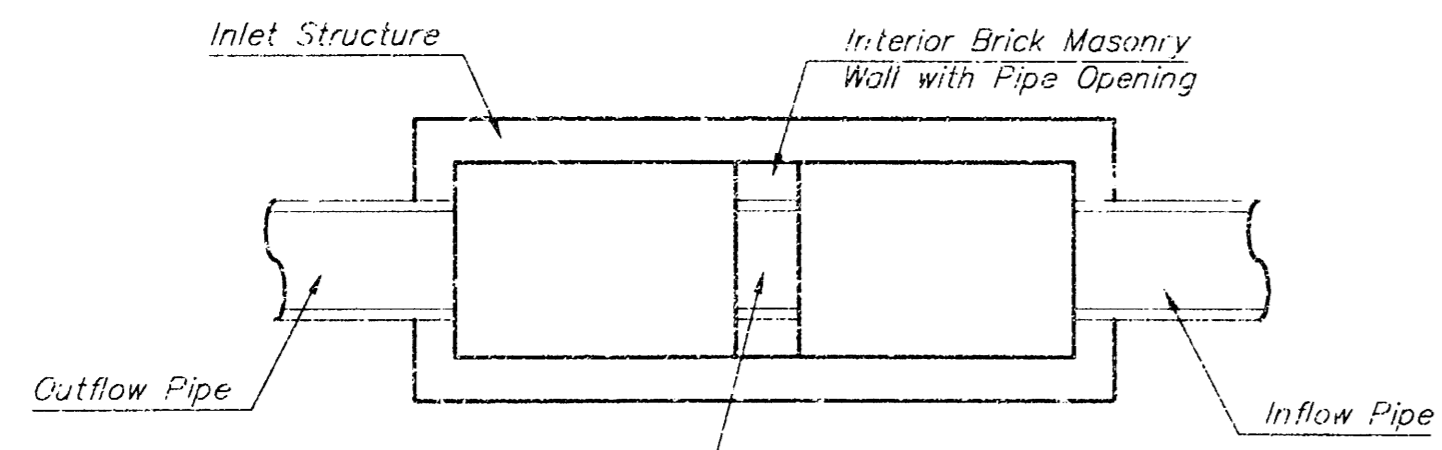
*Left Side Shown Without Slab Reinforcing, Right Side Shown With Slab Reinforcing



ELEVATION



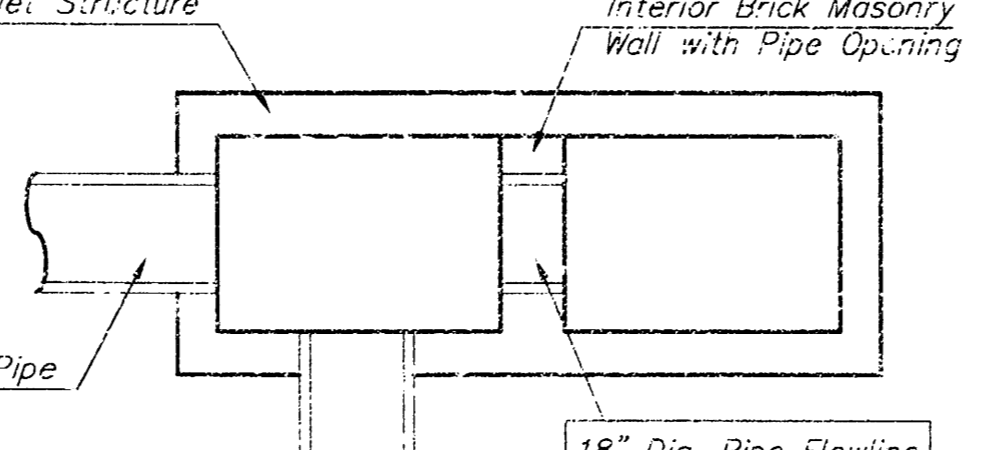
SECTION B-B



CASE I

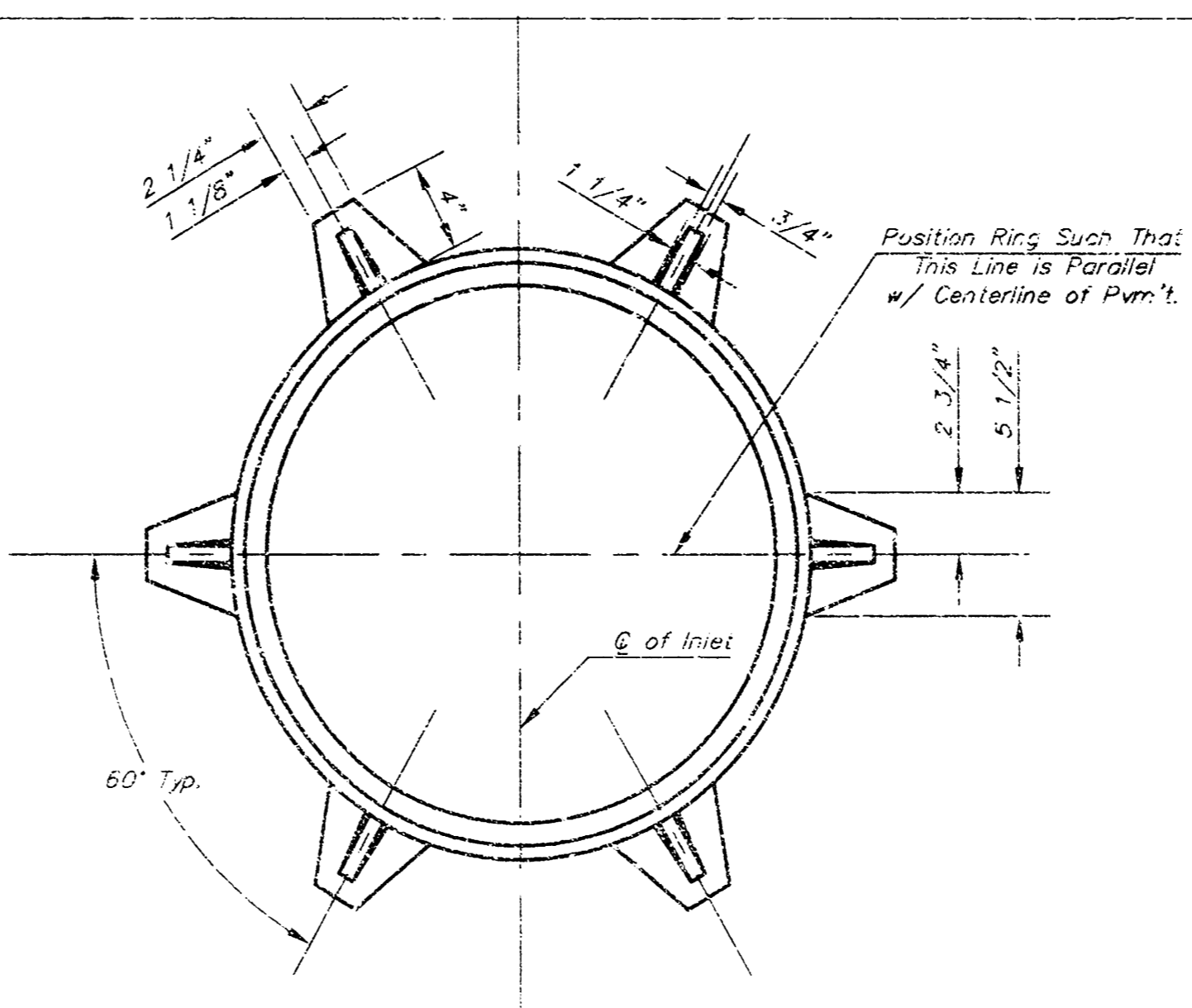
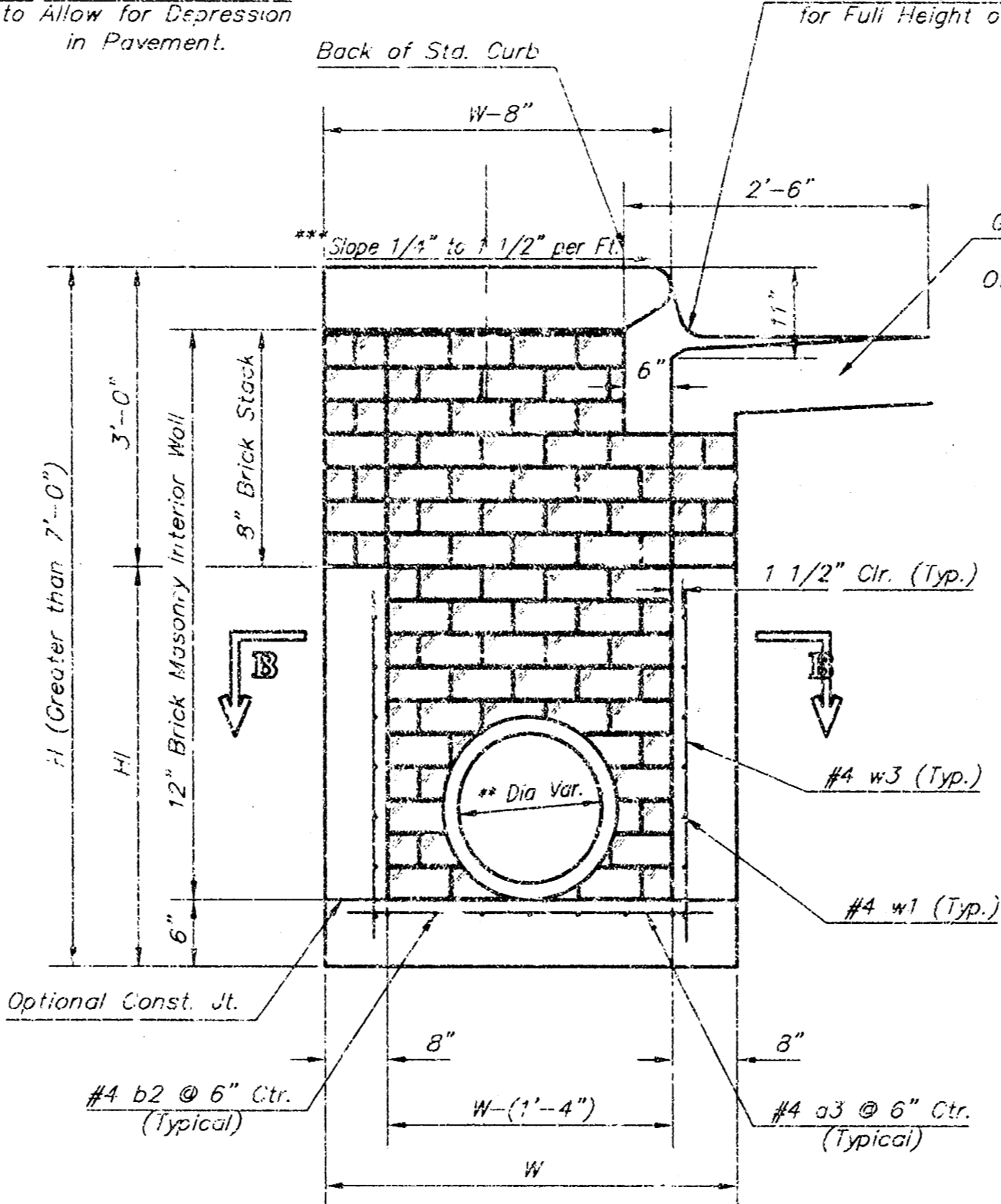
Pipe Size to be the Same as Outlet Pipe Size. Flowline Elev. to be Average of Lowest Inflow Pipe Elev. and Outflow Pipe Elev.

NOTE: Center Wall Pipe Size shall be as Specified in Inlet Construction Notes on the Plan/Profile Sheets for those Cases not Shown Here.



CASE II

TYPICAL INLET SECTION AT CENTER WALL (REINFORCED CONCRETE WALLS)



MANHOLE RING AND COVER

*See City of Wichita Standard Manhole Ring and Cover Detail Sheet for Cover Details to be Used With Inlet Frame.

Inlet Frame Weight = 180 lbs

PRECAST SLAB AND FLOOR REINFORCING

MARK	SIZE	NO.	LENGTH	NO.	LENGTH	NO.	LENGTH	NO.	LENGTH	NO.	LENGTH
a1	#4	13	6'-7"	13	3'-7"	13	10'-7"	13	12'-7"	13	14'-7"
a2	#4	4	6'-0"	4	8'-0"	4	10'-0"	4	12'-0"	4	14'-0"
a3	#4	23	4'-1"	23	5'-1"	23	6'-1"	23	7'-1"	23	8'-1"
b1	#4	1	9'-9"	1	9'-9"	1	9'-9"	1	9'-9"	1	9'-9"
b2	#4	23	11'-1"	29	11'-1"	35	11'-1"	41	11'-1"	47	11'-1"
c1	#4	16	3'-10"	16	4'-2"	16	4'-6"	16	4'-10"	16	5'-2"

WALL REINFORCING

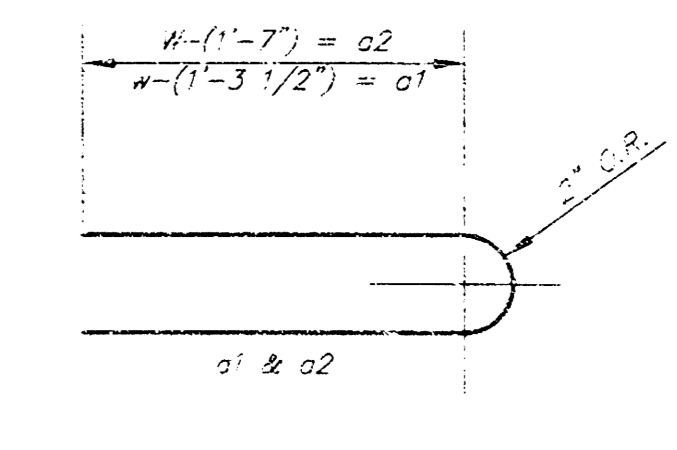
MARK	SIZE	NO.	LENGTH	NO.	LENGTH	NO.	LENGTH	NO.	LENGTH	NO.	LENGTH
w1	#4	1	11'-1"	1	11'-1"	1	11'-1"	1	11'-1"	1	11'-1"
w2	#4	1	4'-1"	1	5'-1"	1	6'-1"	1	7'-1"	1	8'-1"
w3	#4	52	2	56	2	60	2	64	2	68	2

* Field Bend or Cut Reinforcing as Required for Clearance.
 ① A (H = 12") (14 - 21") Rounded down to nearest 0.5"
 ② H = 3"

STANDARD CURB INLET PRECAST TOPS

W	PRE-CAST TOP SIZE	FORM SIZE	CU. YD. CONC.
4'-4"	3'-8" x 11'-4" x 7 1/2"	21" & SMALLER	0.832
5'-4"	4'-8" x 11'-4" x 7 1/2"	24" & 30"	1.092
6'-4"	5'-8" x 11'-4" x 7 1/2"	36" & 42"	1.352
7'-4"	6'-8" x 11'-4" x 7 1/2"	48" & 54"	1.612
8'-4"	7'-8" x 11'-4" x 7 1/2"	60" & 66"	1.872

BENDING DIAGRAM



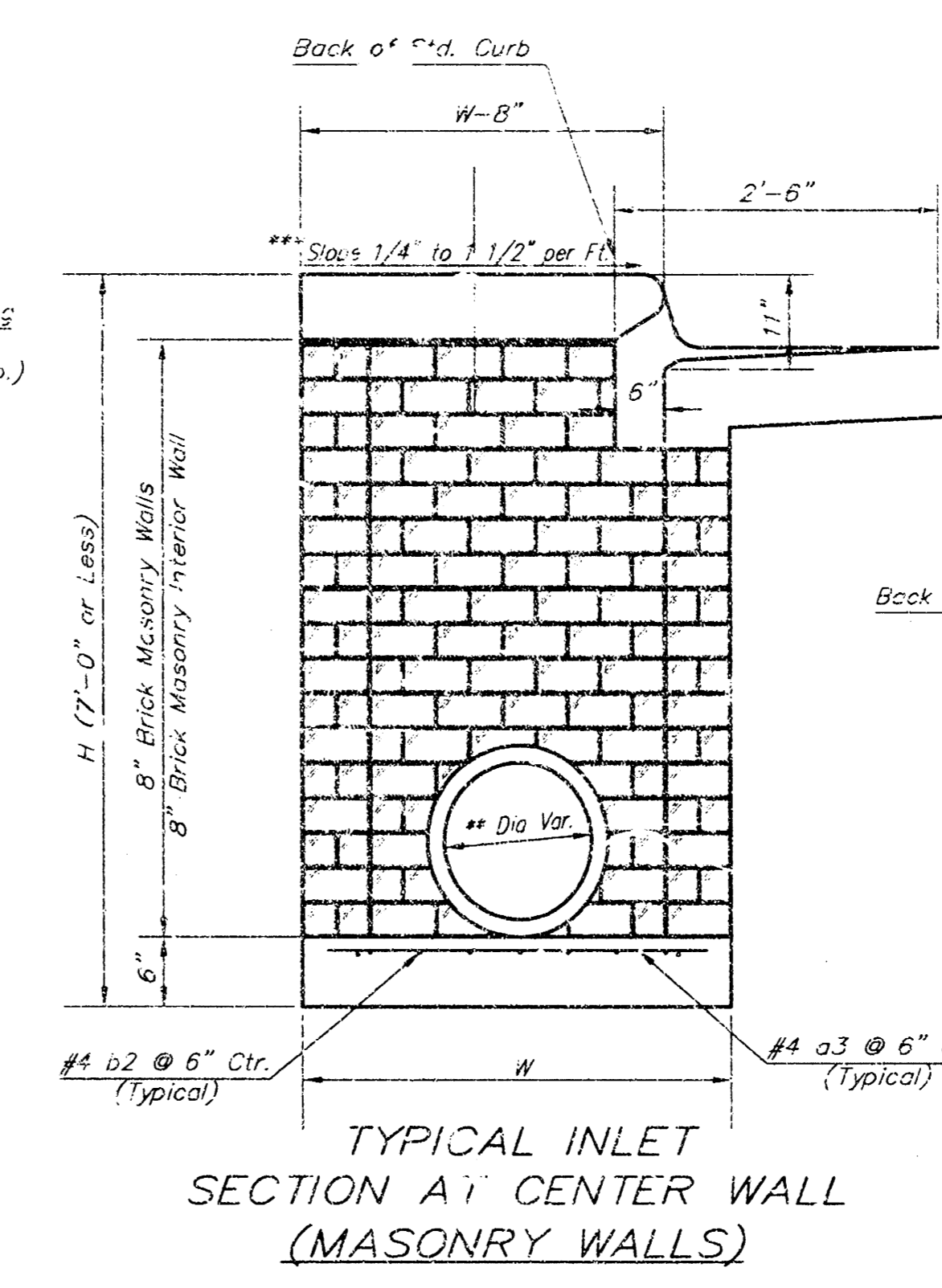
GENERAL NOTES:

Concrete shall be C.O.W. standard paving mix. All exposed edges shall be finished with an edging tool. Reinforcing bars shall be field bent or cut to clear pipes and inlet rings. All bars are #4 bars @ 6" spacing and shall have a minimum clearance of 1 1/2" unless otherwise noted. Floors of inlet shall be shaped with 8 sack sand mix concrete to increase hydraulic efficiency such that the inlet will be self cleaning between all inlet and/or outlet pipe(s). The contractor will be required to construct 8" brick masonry wall between the inlet base and top on this inlet when H=7'-0" or less and H=6'-4" or less. When H is greater than 6'-4" and H is less than 7'-0", the outside inlet walls below the brick stack shall be reinforced concrete construction.

Concrete tops to be installed on thin mortar cushion to insure full support along brick walls. Concrete tops may be cast in place or precast.

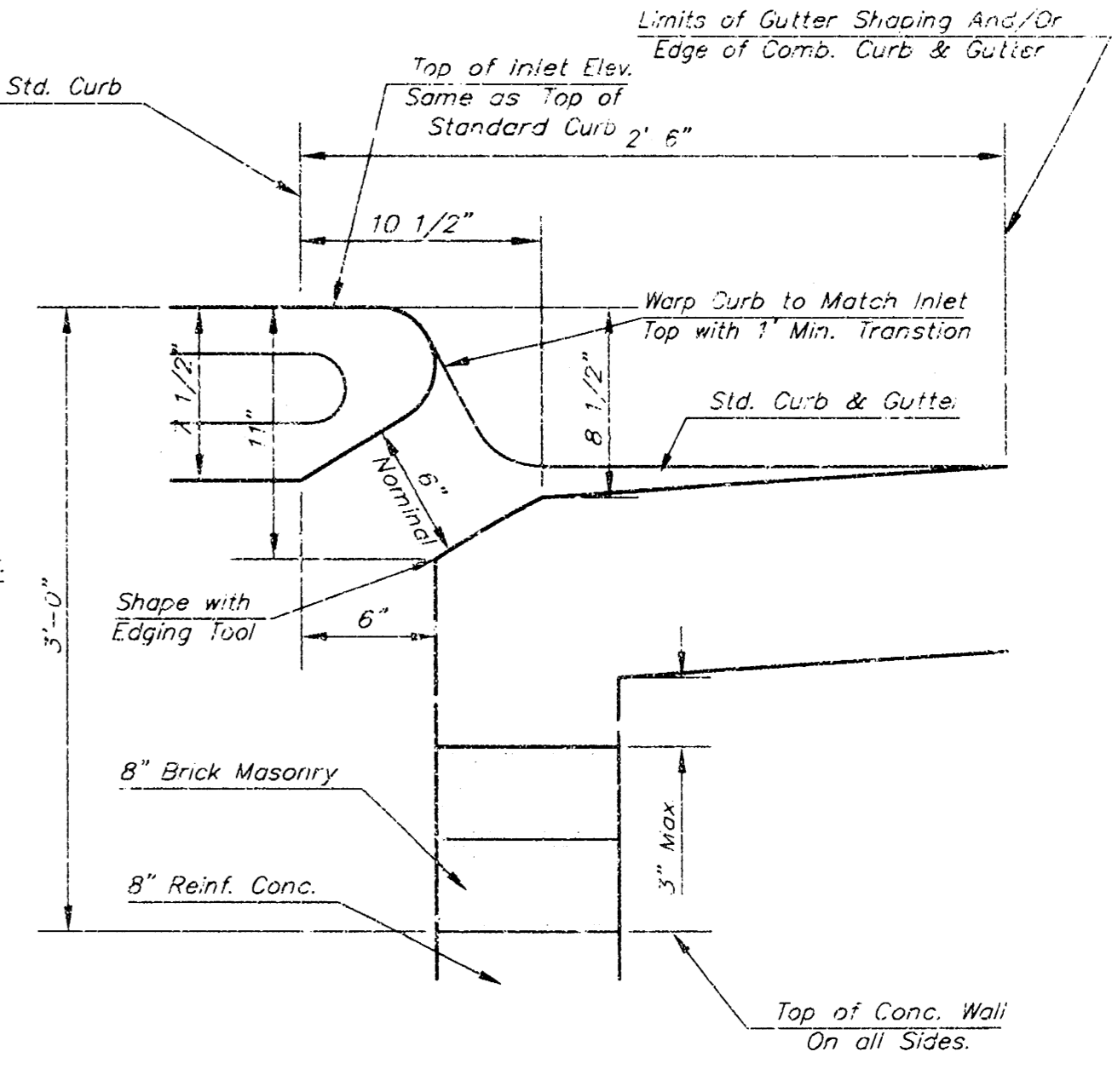
The ends of all pipes installed in inlets shall be cut off flush with the inside face of the inlet wall.

This detail is identical to the standard detail drawing except that the gutter transition length is increased from 2'-0" to 3'-6".

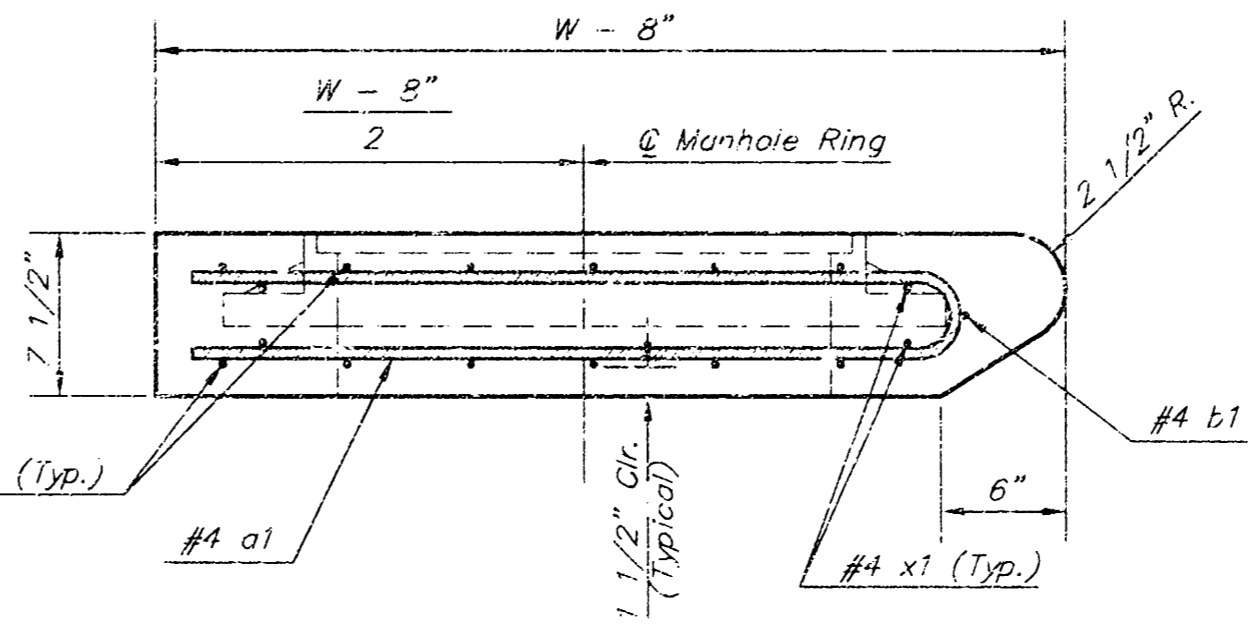


TYPICAL INLET SECTION AT CENTER WALL (MASONRY WALLS)

NOTES:
 ** A center wall opening shall be provided by means of a section of reinforced concrete pipe. See Case I and Case II below.
 *** Slope of inlet laps to match sidewalk of parking slopes within limits indicated



SECTION C-C



SECTION A-A

THE CITY OF WICHITA
 STANDARD TYPE 1 CURB INLET
 OPENING = 6" x 10'-0"

M. E. LINDEBAK P.E. - CITY ENGINEER

PROJECT NUMBER: XXX-XXXXX
 INDEX CODE: XXXXXX

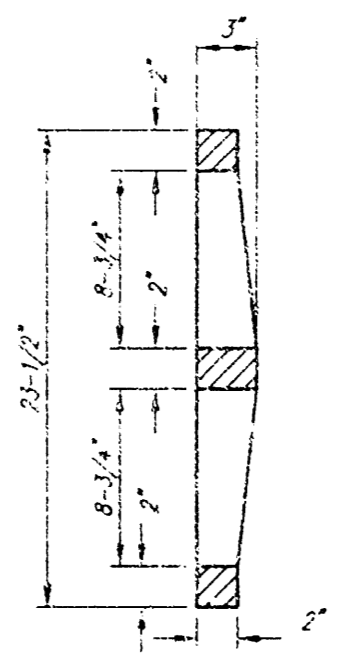
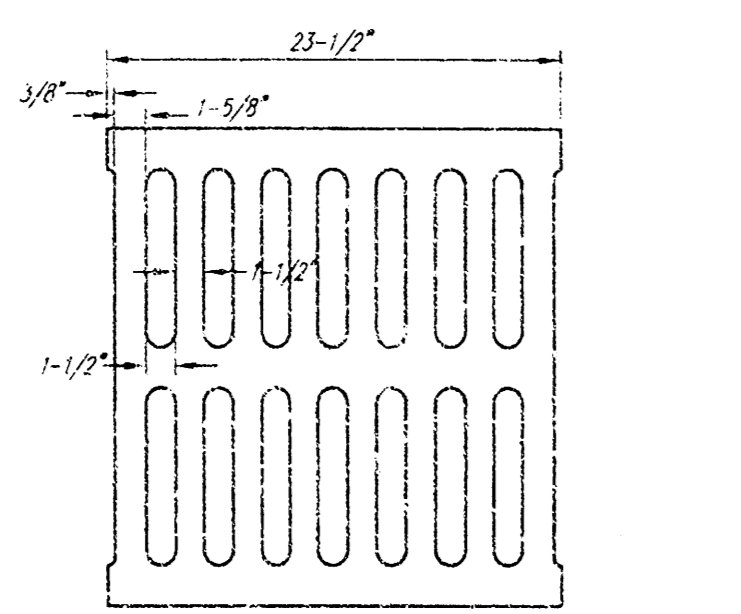
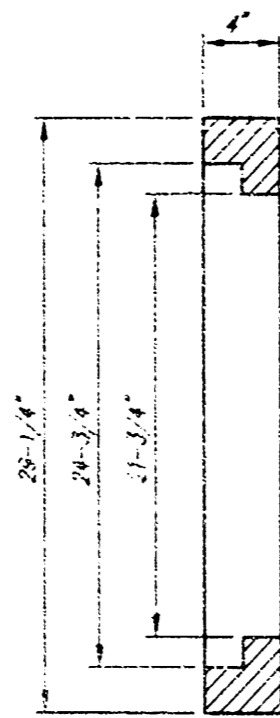
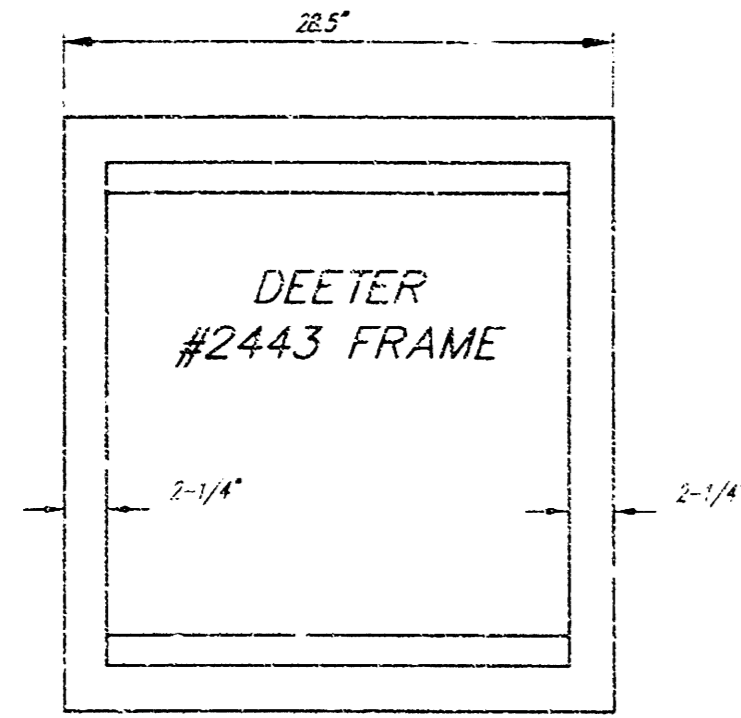
CITY ENGINEER'S OFFICE
 CITY HALL - SEVENTH FLOOR
 400 NORTH MAIN STREET
 WICHITA, KANSAS 67202
 (616) 268-4501
 (616) 268-4114 Fax

DATE: MAR 96
 SHEET X OF X

PROJECT NUMBER: 1374 PPS (607861)
 DESIGN: FILE
 DRAWN: (yp) d
 DATE: 4/1/03
 SCALE: 1/8" = 1'-0"

AM NO. 0203-07
 RUSTY ECK FORD
 INLET DETAILS
 WICHITA, KANSAS

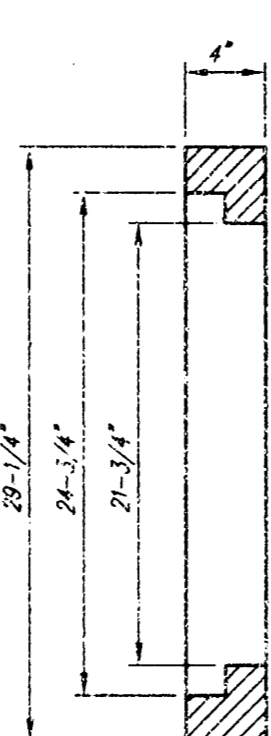
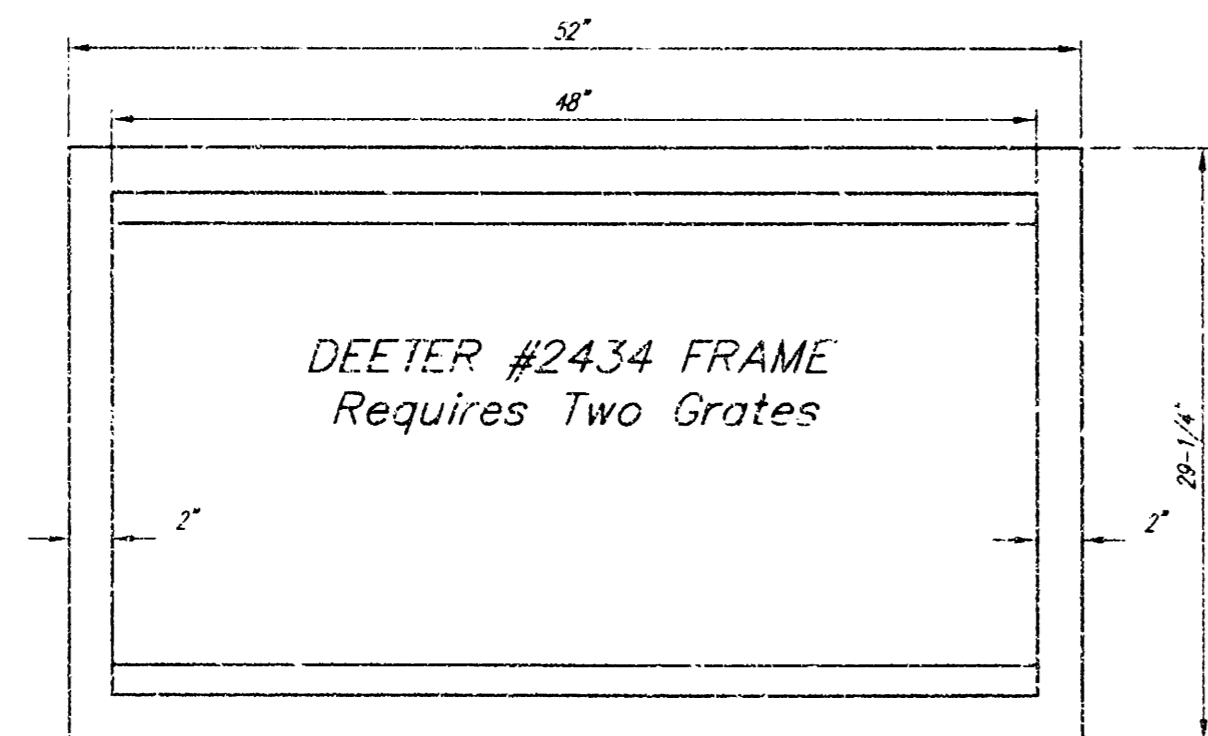
SHEET: 4 OF 6
 DATE: 4/1/03



DEETER #2433 GRATE

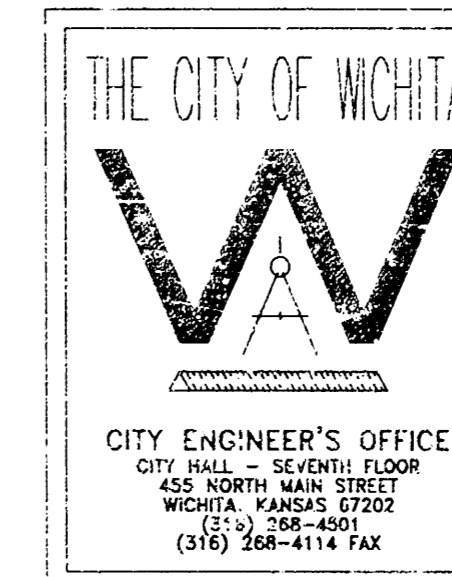
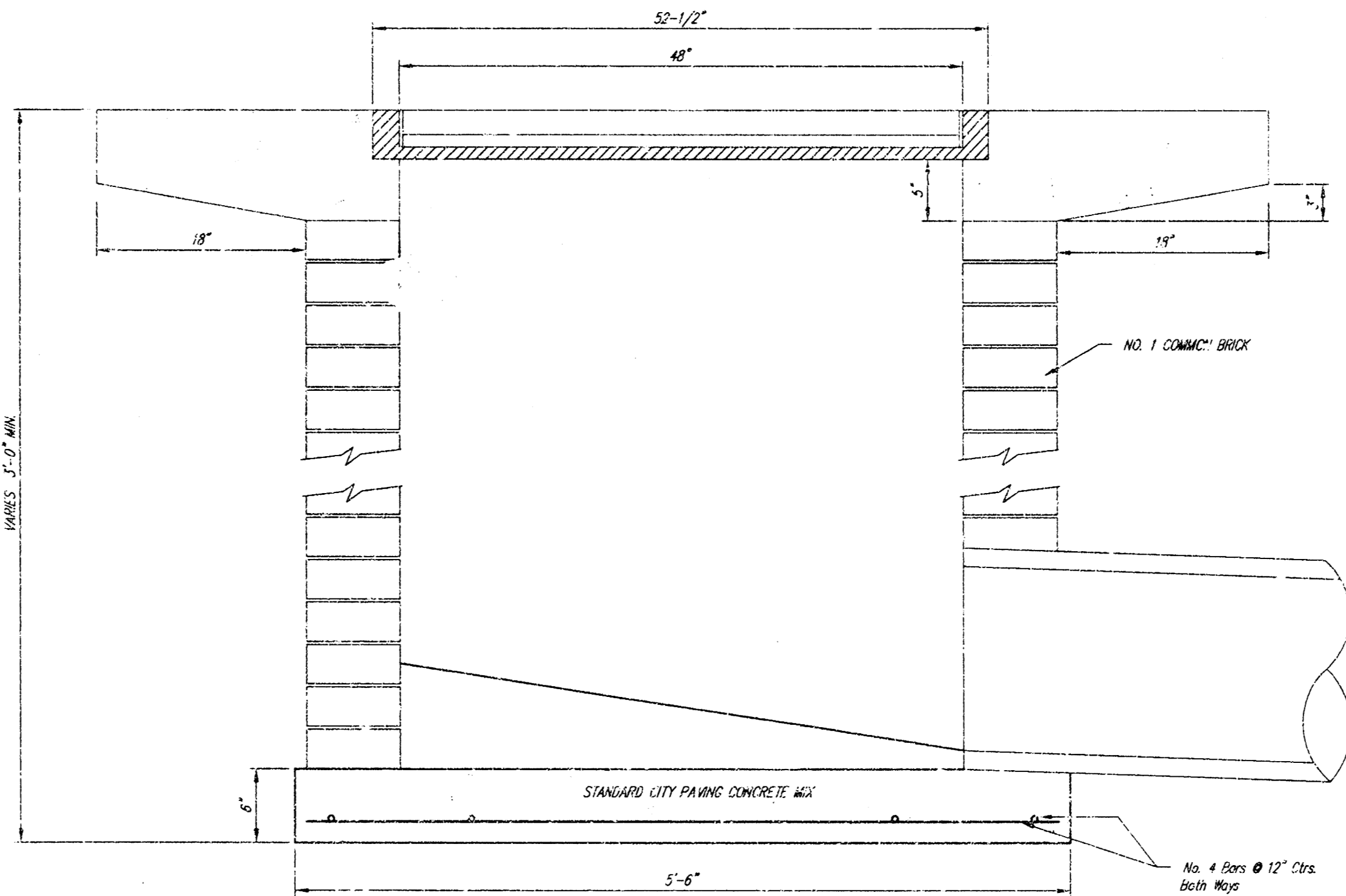
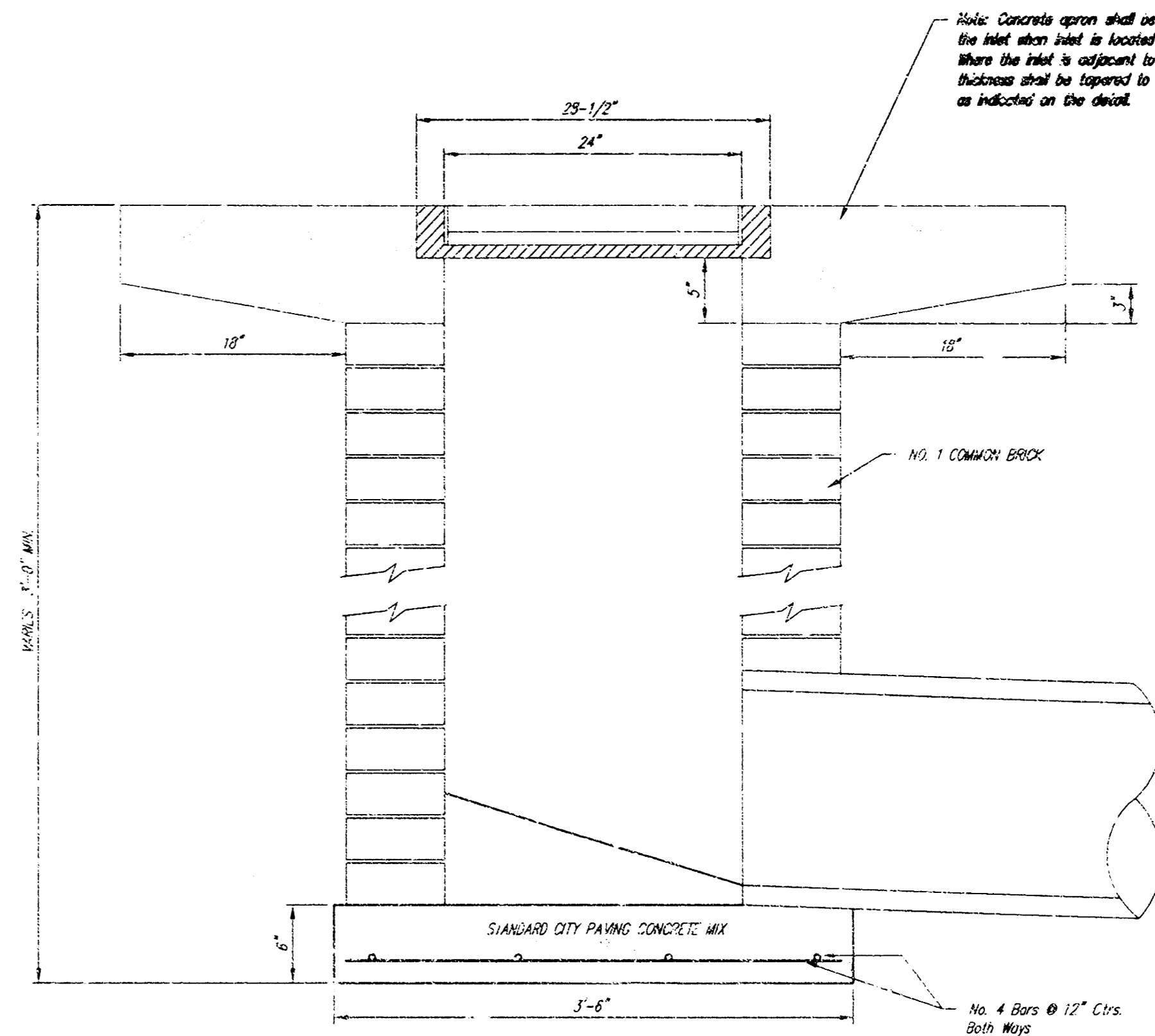
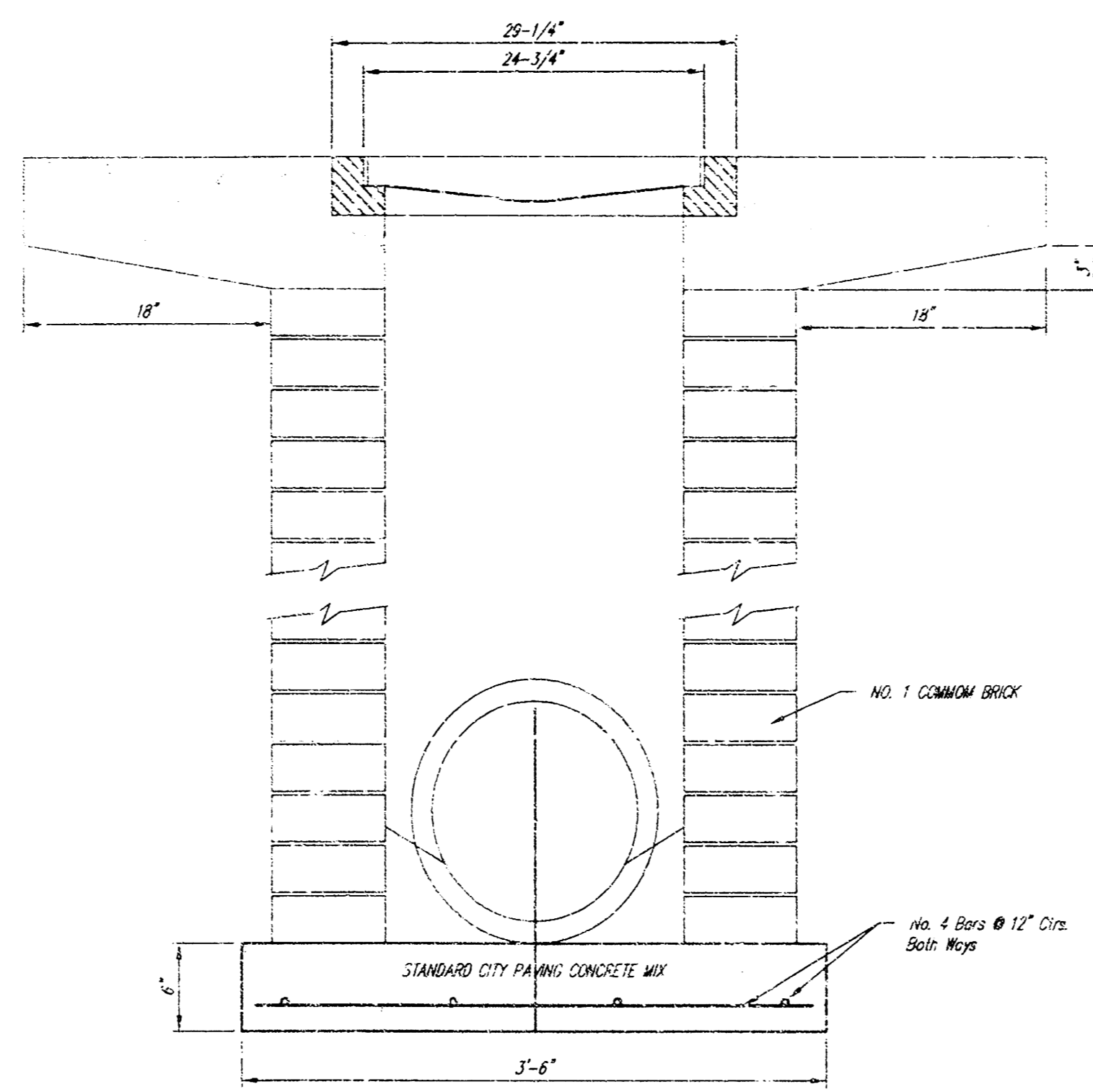
24" x 24" Frame and Grate Detail

NOTE: Grates shall be imprinted on the top surface with "CITY OF WICHITA" using letters of least 1" in height. Other marking methods may be approved by the engineer.



DEETER #2434 FRAME
Requires Two Grates

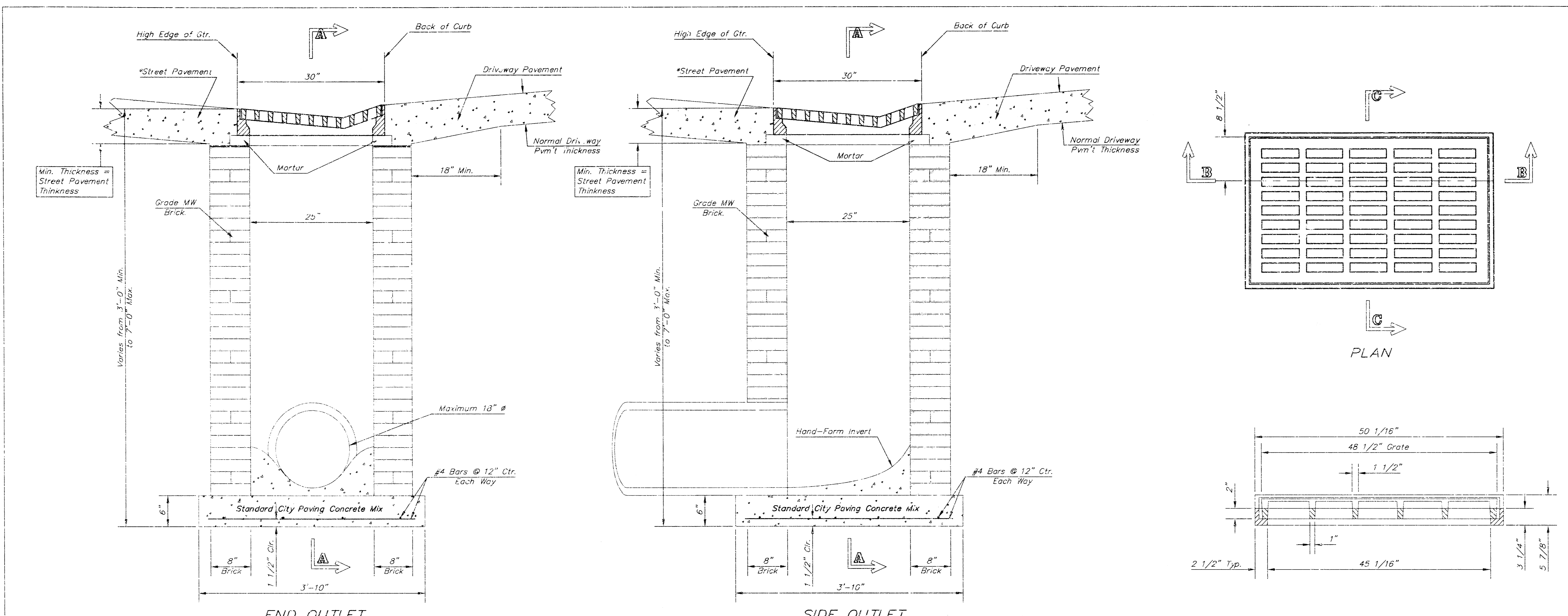
Double 24" x 24" Frame Detail



DROP INLET 2' X 2 1/2' X 4'	
M. E. LINDEBAK P.E. - CITY ENGINEER	
PROJECT NUMBER 797 PPS 607861	INDEX CODE
DATE MAR 96	SHEET 12 OF 14

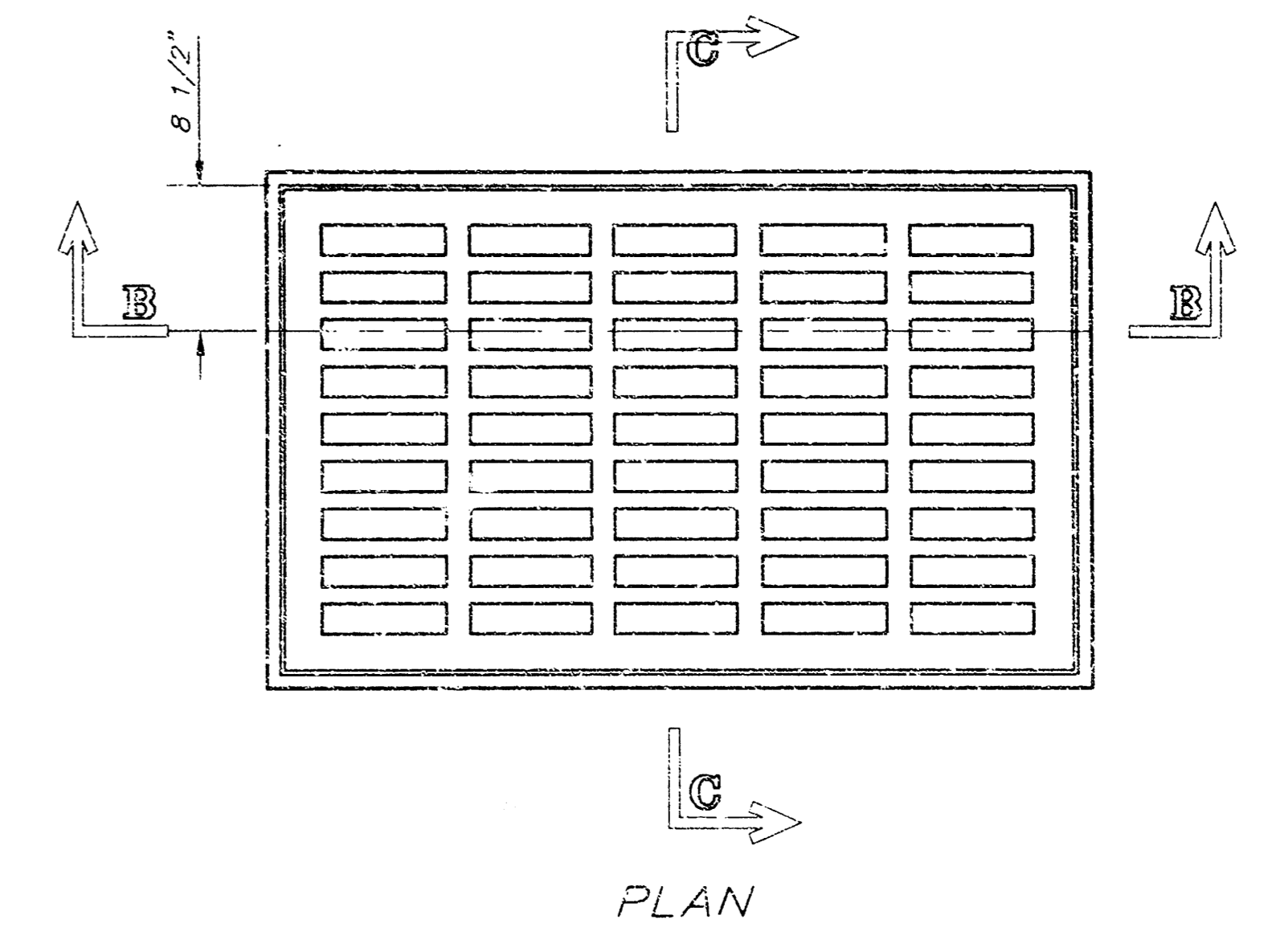
DROPINL.DWG

	PROJECT NUMBER 1374 PPS (607861)		AN NO. 02031-07	RUSTY ECK FORD INLET DETAILS WICHITA, KANSAS	SHEET 5 OF 6
	DESIGN	DRAWN	FILE 1001-1		

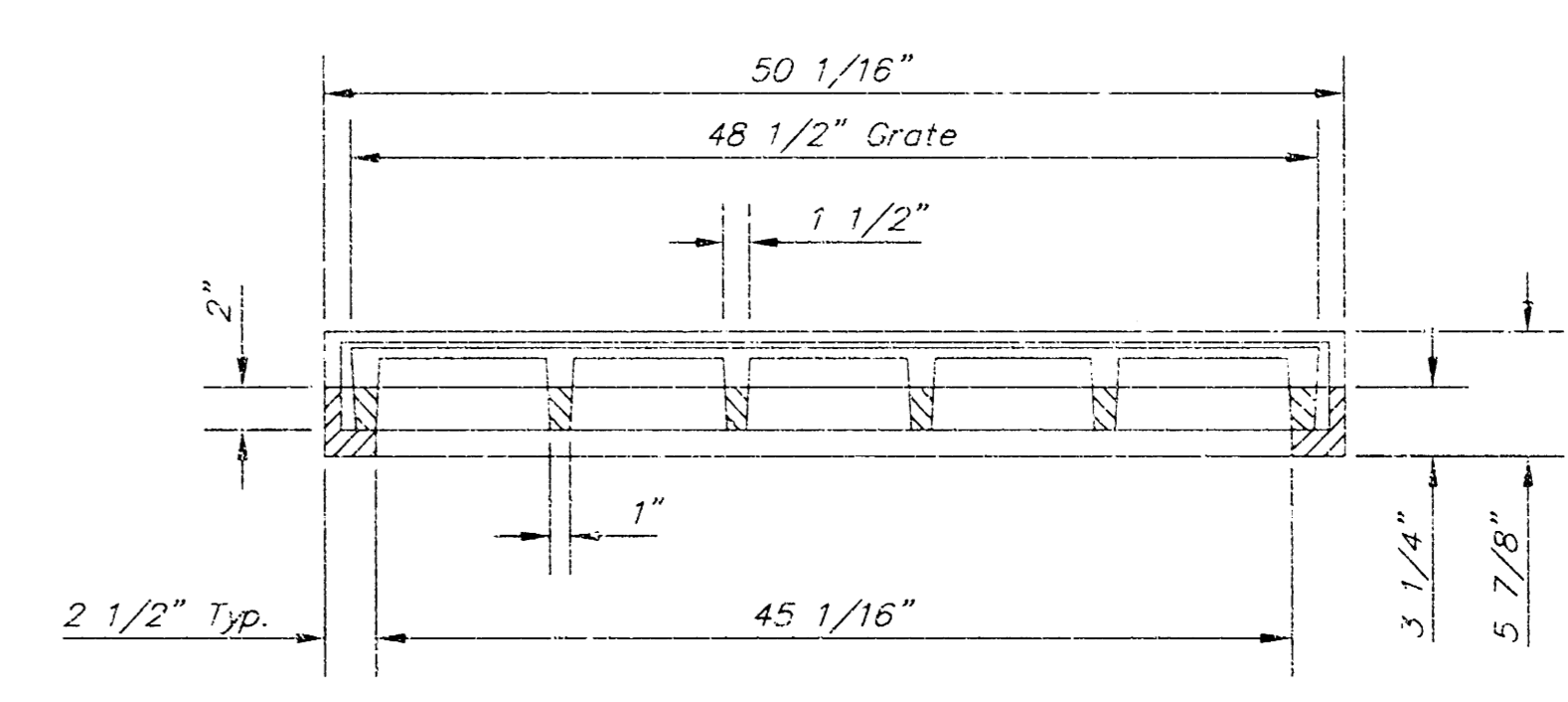


END OUTLET

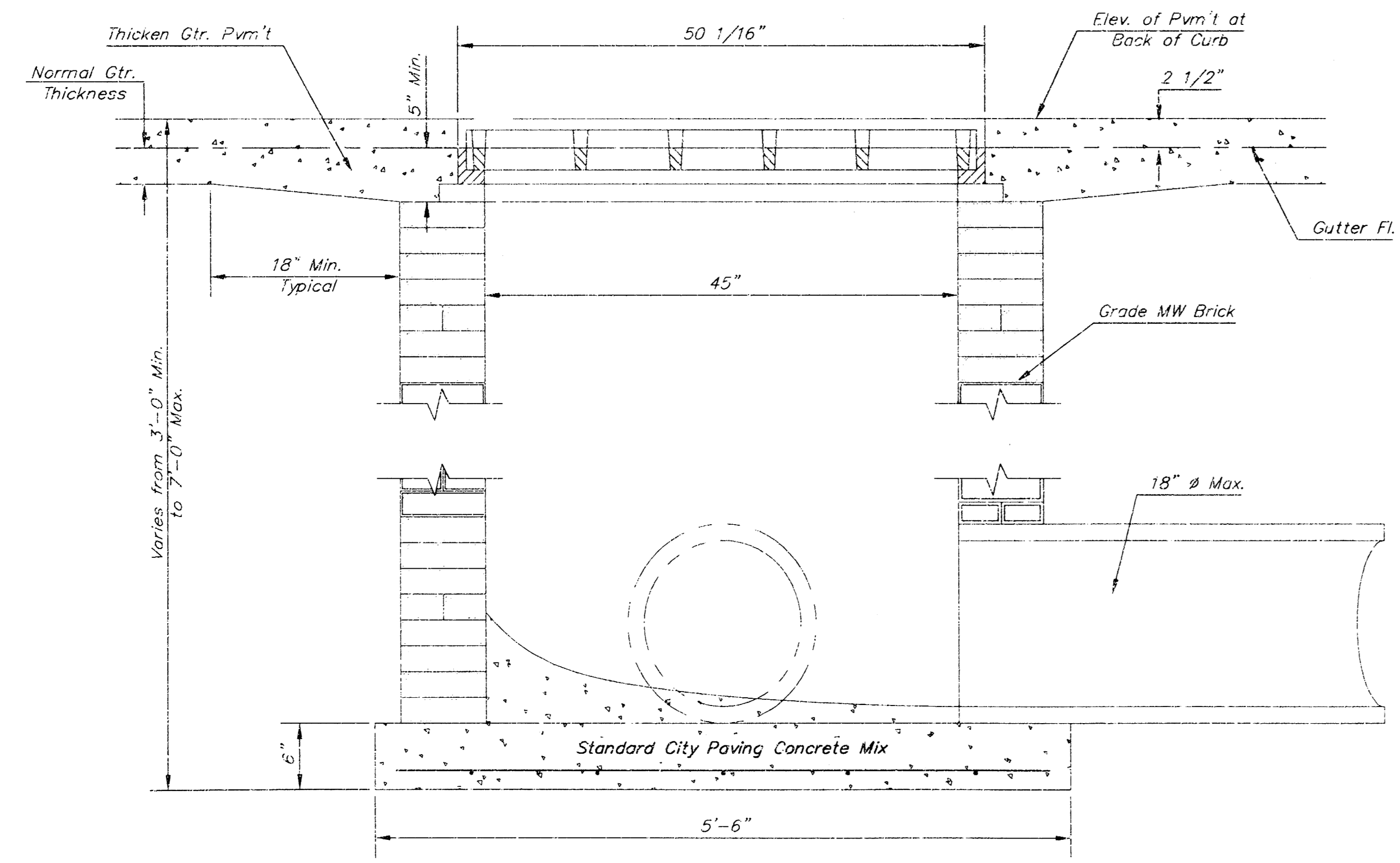
SIDE OUTLET



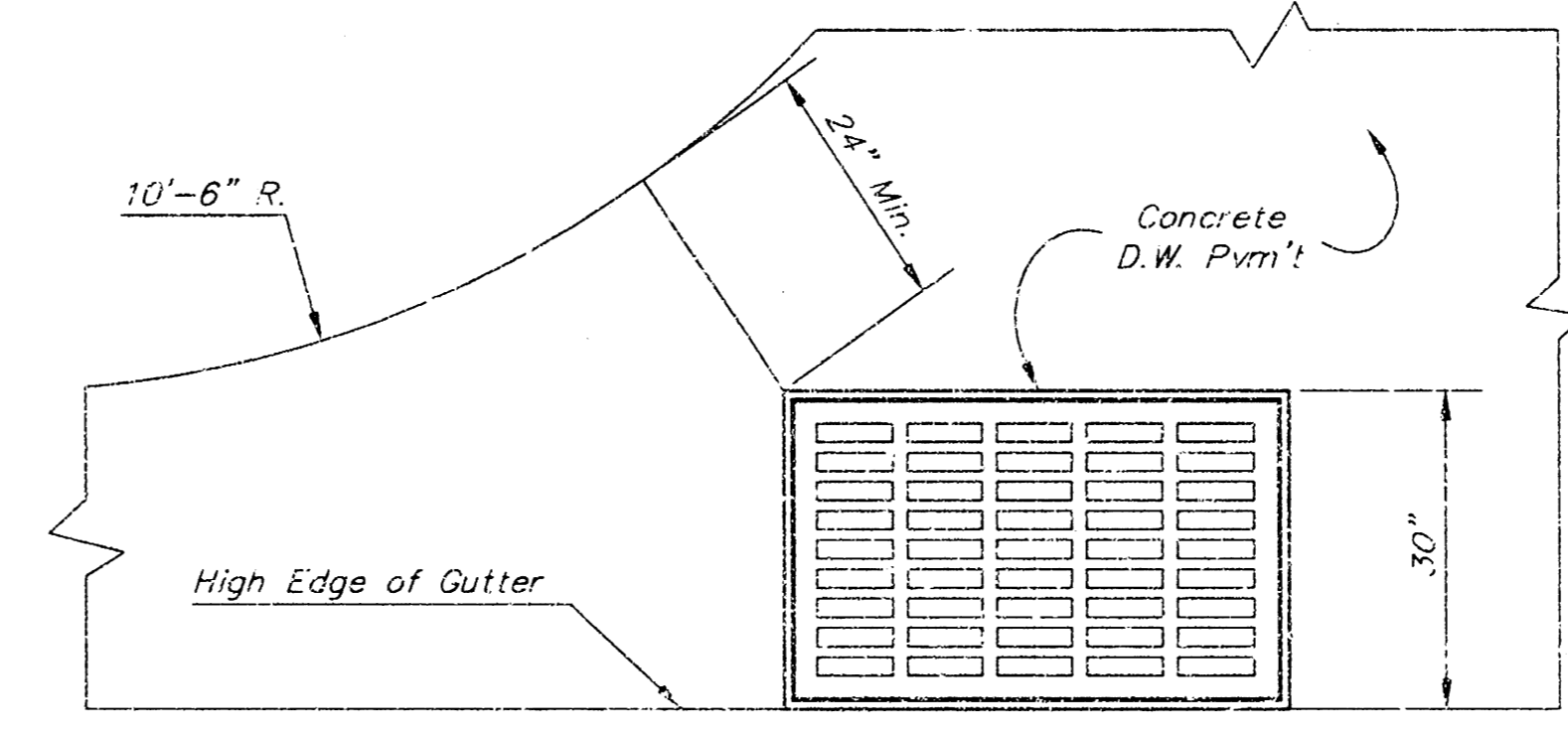
PLAN



SECTION B-B

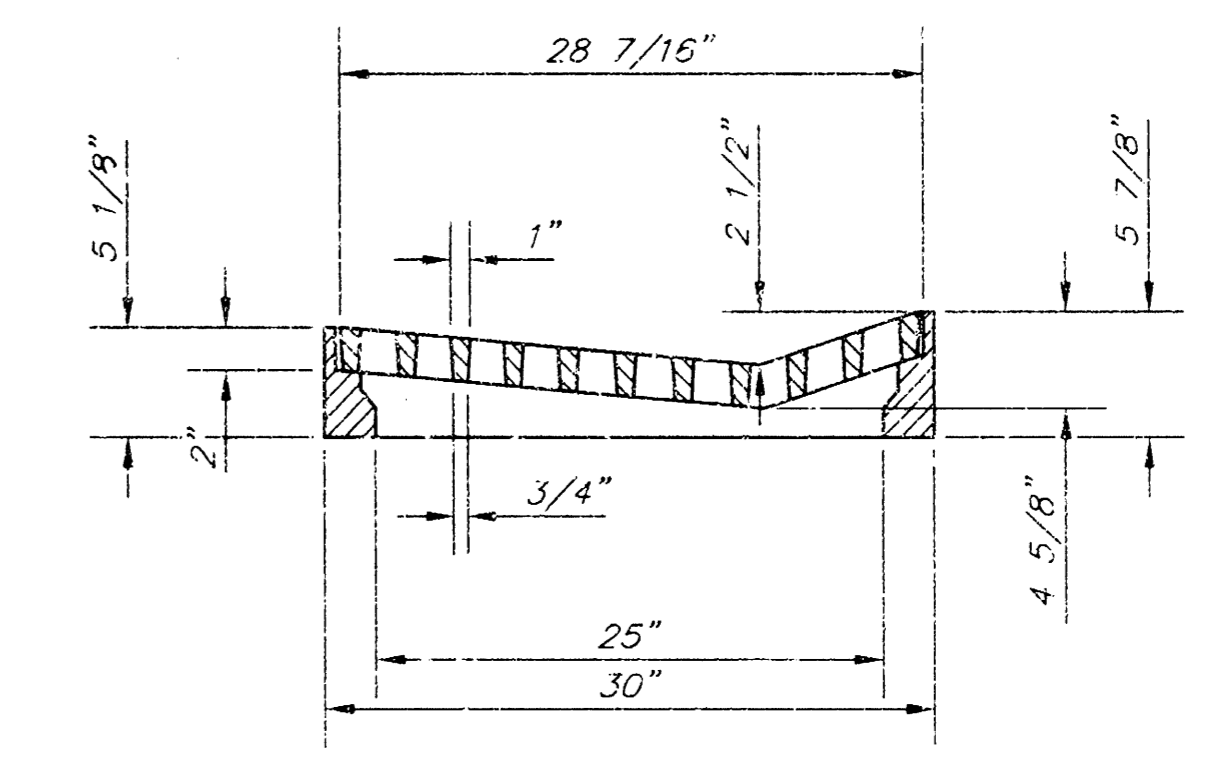


SECTION A-A



PLAN

Radius Ramp Drive to be Constructed On Lot 3, Block 2 per City Standard



SECTION C-C

DEETER #2095 FRAME & GRATE
TOTAL WEIGHT: 705 lbs.

GENERAL NOTES

1. Grate frame to be installed on thin mortar cushion to insure full support along brick walls. Concrete used for inlet construction shall be concrete pavement mix.
2. Inlet invert shall be shaped with 8 sack sand mix concrete to create flow channels and to increase hydraulic efficiency such that the inlet will be self cleaning between all inlet and/or outlet pipes.
3. The ends of all pipes installed in inlets shall be cut off flush with the inside face of the inlet wall.
4. Inlet Frame and Grate to be Deeter #2095 of approved equal

<p>THE CITY OF WICHITA</p> <p>CITY ENGINEER'S OFFICE CITY HALL - SEVENTH FLOOR 455 NORTH MAIN STREET WICHITA, KANSAS 67202 (316) 268-4000 (316) 268-4114 Fax</p>	<p>DRIVEWAY GRADED INLET SINGLE</p>	
	<p>M. E. LINDEBAK P.E. - CITY ENGINEER</p>	<p>PROJECT NUMBER XXX-XXXXX</p>
<p>DATE MAR 96</p>	<p>SHEET X OF X</p>	

DRVINLT.DWG

	<p>PROJECT NUMBER 1374 PPS (607861)</p>	<p>AM NO. 02031-01</p>	<p>RUSTY ECK FORD INLET DETAILS WICHITA, KANSAS</p>	<p>SHEET 6</p>	
	<p>DESIGN</p>	<p>DRAWN</p>		<p>FILE 1901-1</p>	<p>DATE 4/1/03</p>