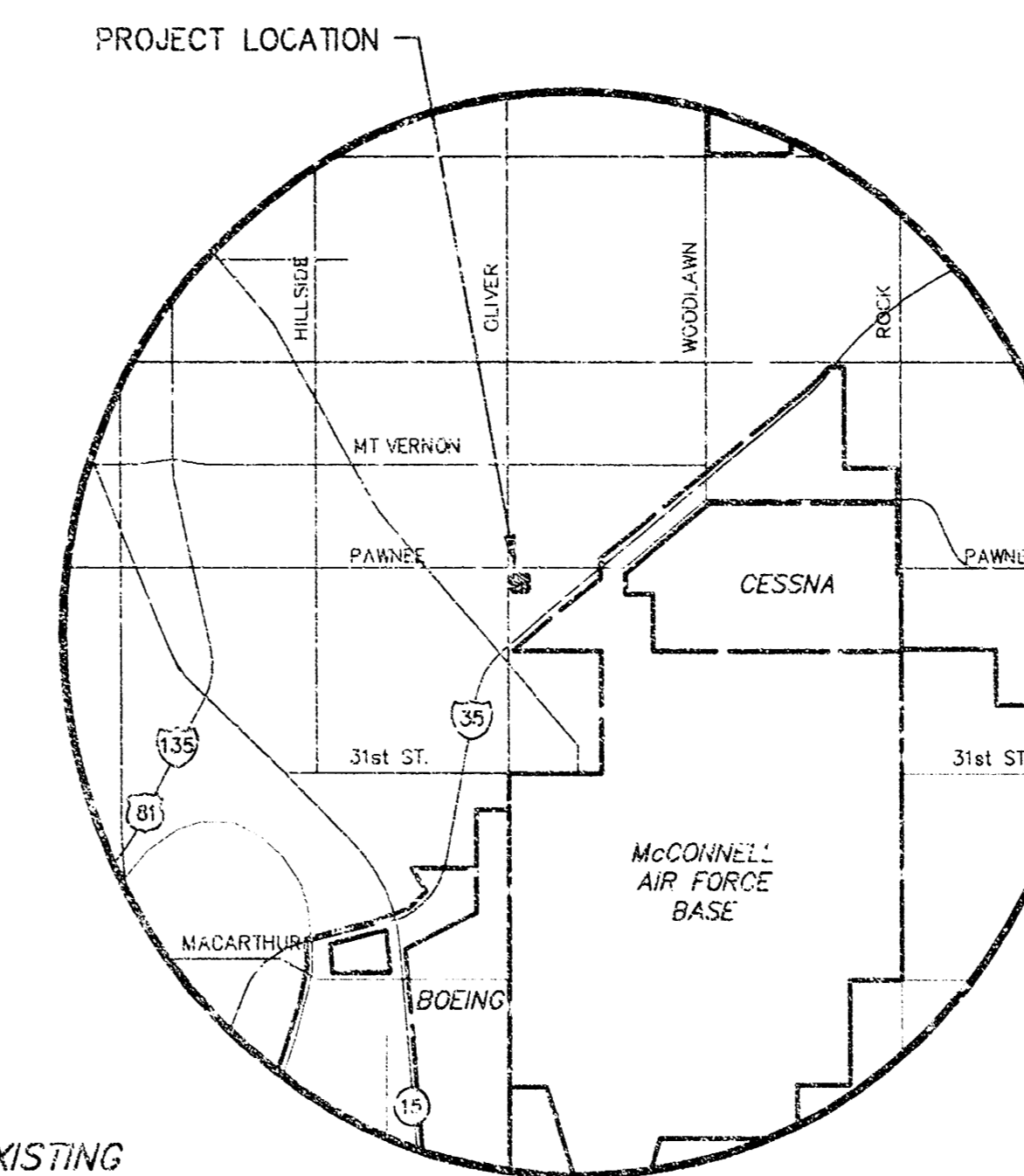


**PRIVATE PROJECT NO. 1373PPS (607861)**

**GENERAL NOTES**

- UNLESS SHOWN OR STATED OTHERWISE ON THESE DRAWINGS, MATERIALS AND CONSTRUCTION SHALL BE IN ACCORDANCE WITH CITY OF WICHITA STANDARD SPECIFICATIONS.
- CONTRACTOR WILL BE REQUIRED TO PROVIDE A MINIMUM ADVANCE NOTICE OF SEVENTY-TWO (72) HOURS TO UTILITY COMPANIES PRIOR TO STARTING ANY EXCAVATION AS FOLLOWS:  
KANSAS ONE-CALL 1-800-344-7233  
OR 687-2470 (LOCAL WICHITA)
- THE CONTRACTOR MUST NOTIFY THE FOLLOWING IN CASE OF AN EMERGENCY:  
SBC (TELEPHONE) 800-870-8390  
COX COMMUNICATIONS (CABLE) 232-0661  
WESTAR (ELECTRIC) 383-8800  
KANSAS GAS SERVICE (GAS) 832-3101  
CITY OF WICHITA WATER & SEWER MAINT. 262-6000  
AGUILA (GAS) 948-0036  
ADELPHIA 209-8806
- THE CONTRACTOR SHALL BE RESPONSIBLE FOR PRESERVING PROPERTY IRONS. THE CONTRACTOR WILL BE REQUIRED TO RE-ESTABLISH ANY PROPERTY IRONS WHICH ARE DAMAGED OR DESTROYED BY HIS/HER CONSTRUCTION OPERATIONS. SUCH IRONS SHALL BE RE-ESTABLISHED BY A LICENSED LAND SURVEYOR IN ACCORDANCE WITH STATE LAWS.
- EXISTING UTILITIES AND THEIR LOCATIONS, AS SHOWN ON THE PLANS REPRESENT THE BEST INFORMATION OBTAINABLE FOR DESIGN. LOCATION INFORMATION HAS BEEN OBTAINED FROM THE VARIOUS UTILITY COMPANIES AND IS EITHER FROM COMPANY RECORD DRAWINGS OR COMPANY PROVIDED FIELD LOCATIONS. THE PLAN LOCATIONS SHOWN ARE NOT GUARANTEED. ADDITIONAL EXISTING UTILITIES MAY ALSO BE ENCOUNTERED.
- RUBBLE FROM THE REMOVAL OF MISCELLANEOUS STRUCTURES AND EXCESS EXCAVATION WHICH IS TO BE WASTED SHALL BE DISPOSED OF ON SITES TO BE PROVIDED BY THE CONTRACTOR. THESE SITES SHALL BE APPROVED BY THE ENGINEER AS TO SUITABILITY, APPEARANCE AND SITE LOCATION. LOCATIONS THAT, IN THE OPINION OF THE ENGINEER, WILL LEAVE AN UNSIGHTLY APPEARANCE WILL NOT BE APPROVED. ALL DISPOSAL SITES MUST BE APPROVED BY THE KANSAS DEPARTMENT OF HEALTH AND ENVIRONMENT. MATERIAL EITHER STOCKPILED OR DISPOSED OF IN A FLOOD PLAIN WOULD REQUIRE A KANSAS STATE BOARD OF AGRICULTURE PERMIT. ANY MATERIAL DUMPED IN WATERS OF THE UNITED STATES OR WETLANDS IS SUBJECT TO U.S. CORPS OF ENGINEERS PERMITTING REGULATIONS. ANY MATERIAL BURIED OR STOCKPILED BEYOND APPROVED CONSTRUCTION LIMITS WOULD REQUIRE ADDITIONAL ARCHAEOLOGICAL INVESTIGATIONS UNLESS BURIED IN A PREVIOUSLY APPROVED BORROW LOCATION.
- CONTRACTOR SHALL RESEED AND MULCH ALL DISTURBED AREAS. COST SHALL BE CONSIDERED SUBSIDIARY TO PROJECT.
- IN NO INSTANCE SHALL GRADE ACROSS HANDICAP PARKING STALLS OR ISLE EXCEED 2% IN ANY DIRECTION.



LOCATION MAP

**LEGEND**

- PAVEMENT/SIDEWALK REMOVAL
- PAVEMENT/SIDEWALK REMOVAL & REPLACE
- PROPOSED SPOT ELEV.
- EXIST. SPOT ELEV
- IN - TREE AND DIAMETER
- SN - SN - SIGN AND POSTS
- IP - IRON PIPE
- PP - POWER POLE AND DEADMAN
- EGE - ELECTRIC BOX
- UGE - UNDERGROUND ELEC. LINE
- OHE - OVERHEAD ELEC. LINE
- FENCE
- BM - BENCHMARK
- SSMH - STORM WATER MANHOLE
- SSMH - SANITARY SEWER MANHOLE
- LP - LIGHT POLE
- FH - FIRE HYDRANT
- WV - WATER VALVE
- WM - WATER METER
- ICV - IRRIGATION CONTROL VALVE
- STORM SEWER PIPE
- WATER LINE
- SANITARY SEWER LINE
- G - GAS LINE
- T - TELEPHONE LINE

APPROVED AS NOTED  
BY CITY ENGINEER OF WICHITA

STORM SEWERS V.R.H. 8/21/03

**NOTE TO CONTRACTOR**

INSPECTION AND TESTING FOR THIS PROJECT IS TO BE PROVIDED BY A LICENSED CONSULTING ENGINEERING FIRM UNDER CONTRACT WITH THE OWNER/DEVELOPER. SAID INSPECTION TO BE IN ACCORDANCE WITH THE CITY OF WICHITA STANDARD CONSTRUCTION ENGINEERING PRACTICES AND CERTIFIED BY A LICENSED PROFESSIONAL ENGINEER. NO WORK SHALL BE PERFORMED IN DEDICATED EASEMENTS OR THE PUBLIC RIGHT-OF-WAY BY THE CONTRACTOR WITHOUT SUCH INSPECTION NOR SHALL ANY WORK BE COMMENCED IN DEDICATED EASEMENTS OR PUBLIC RIGHT-OF-WAY WITHOUT WRITTEN AUTHORIZATION BY THE CITY ENGINEER.

**LEGAL**

Lots 4 & 5, Blk. 2, W.P. Higgins Addition, Wichita, Sedgewick County, Kansas.

**AREA S**

Lot 4 = 48,147 sq. ft.  
Lot 5 = 54,076 sq. ft.  
Impervious = 39,061 sq. ft.

AB-BUILT:  
JANUARY 2004



**TEAMSTERS LOCAL 795, LOTS 4 & 5, BLK. 2  
W.P. HIGGINS ADDITION**

PROJECT NAME

**SITE PLAN**  
SHEET TITLE

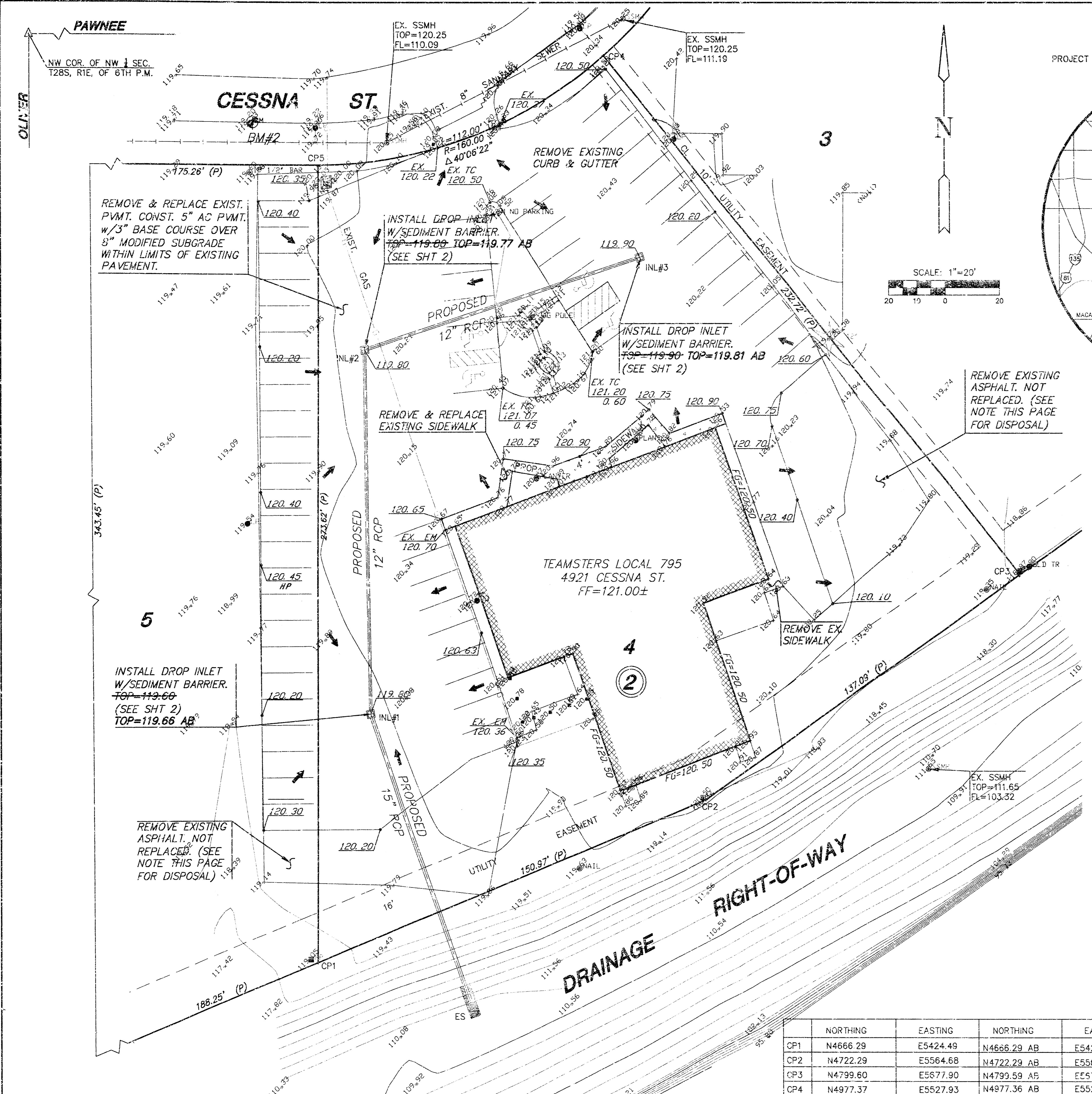
JTC DESIGN BY: DAC DRAWN BY: JTC CHECKED BY:

AUGUST 2003 DATE: 03229 JOB NO. 1 / 3 SHEET/OF

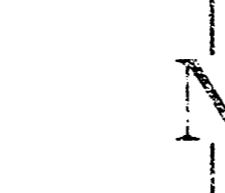
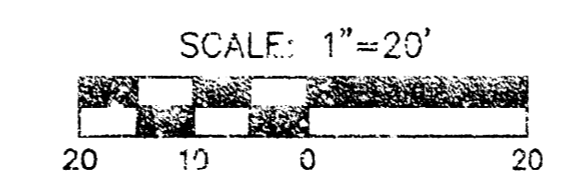
	NORTHING	EASTING	NORTHING	EASTING
CP1	N4666.29	E5424.49	N4666.29 AB	E5424.49 AB
CP2	N4722.29	E5564.68	N4722.29 AB	E5564.68 AB
CP3	N4799.60	E5677.90	N4799.59 AB	E5577.90 AB
CP4	N4977.37	E5527.93	N4977.36 AB	E5527.93 AB
CP5	N4940.00	E5424.93	N4940.00 AB	E5424.93 AB
ES	N4652.88	E5479.44	N4653.15 AB	E5479.49 AB
INL1	N4751.61	E5443.71	N4751.44 AB	E5445.36 AB
INL2	N4876.60	E5441.80	N4876.12 AB	E5443.41 AB
INL3	N4908.29	E5540.85	N4908.69 AB	E5538.72 AB

**BENCHMARKS**

- BM #1 CGW BM ON WEST HUBGUARD OF RCBC UNDER GEORGE WASHINGTON BLVD., 900± NORTH OF OLIVER. ELEV. = 115.84
- BM #2 CHISLED SQUARE ON SOUTH T.C. CESSNA ST., 452± EAST OF CL OLIVER. ELEV. = 119.73



REMOVE & DISPOSE OF DETERIORATED BUMPER BLOCKS. (SEE NOTE THIS SHEET). REUSE RETAINED BUMPER BLOCKS.



3

2

5

PAWNEE  
NW COR. OF NW 1 SEC.  
128S, R1E, OF 6TH P.M.

CESSNA ST

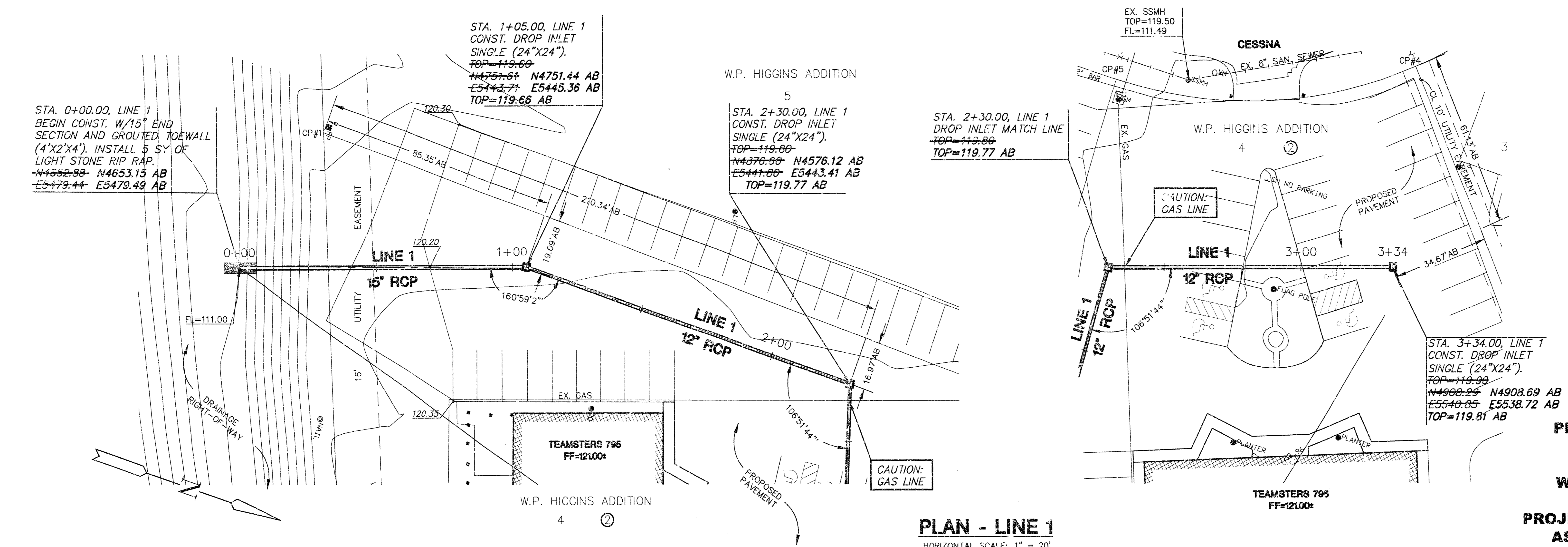
TEAMSTERS LOCAL 795  
4921 CESSNA ST.  
FF=121.00±

DRAINAGE  
RIGHT-OF-WAY

G:\CIVIL\032229\DWG\SWS\ASBUILT\SITE.DWG

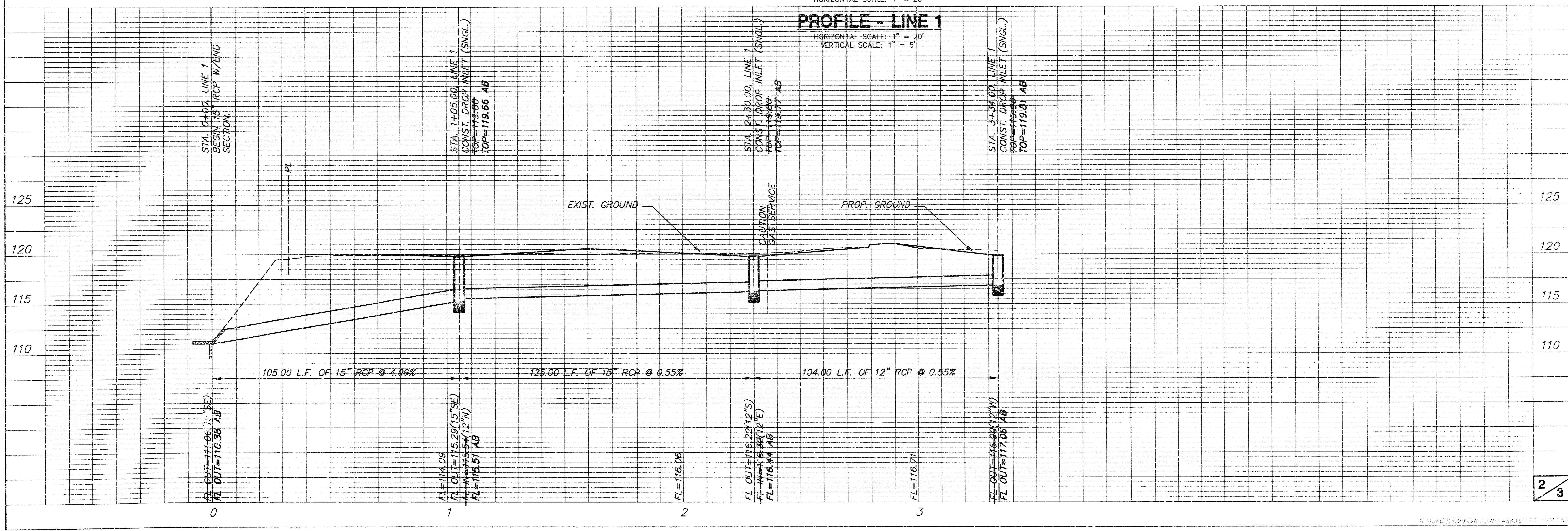
**TEAMSTERS LOCAL 795  
STORM WATER SEWER  
LINE 1**

CONTRACTOR SHALL  
VERIFY LOCATION &  
DEPTH OF EXISTING  
& PROPOSED  
UTILITIES BEFORE  
CONSTRUCTION



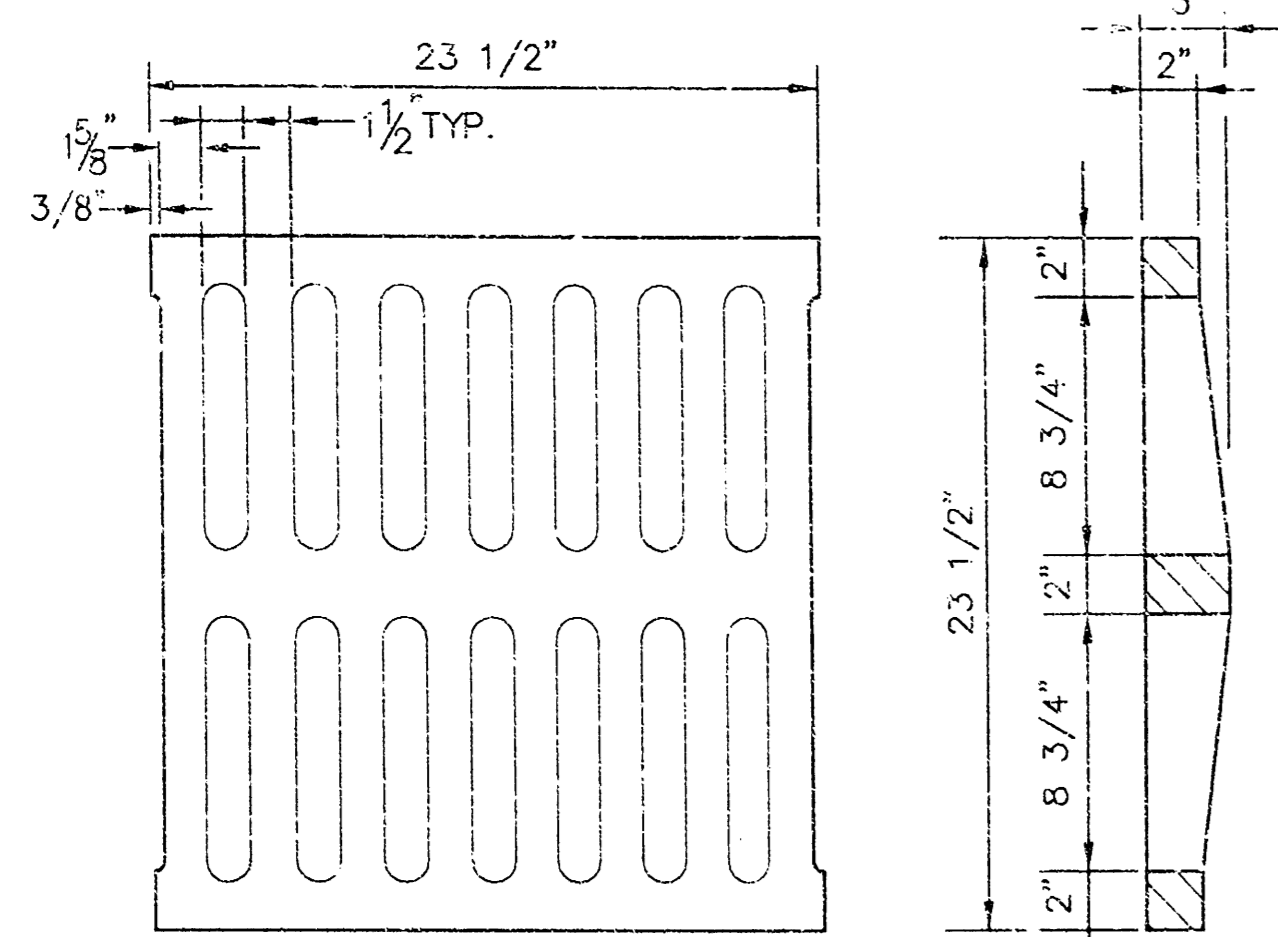
**PLAN - LINE 1**  
HORIZONTAL SCALE: 1" = 20'

**PRIVATE STORM WATER  
SEWER TO SERVE  
LOT 4, BLOCK 2,  
W.P. HIGGINS ADDITION  
TEAMSTERS #795  
PROJECT NO. 1373PPS (607861)  
AS-BUILT JANUARY 2004**

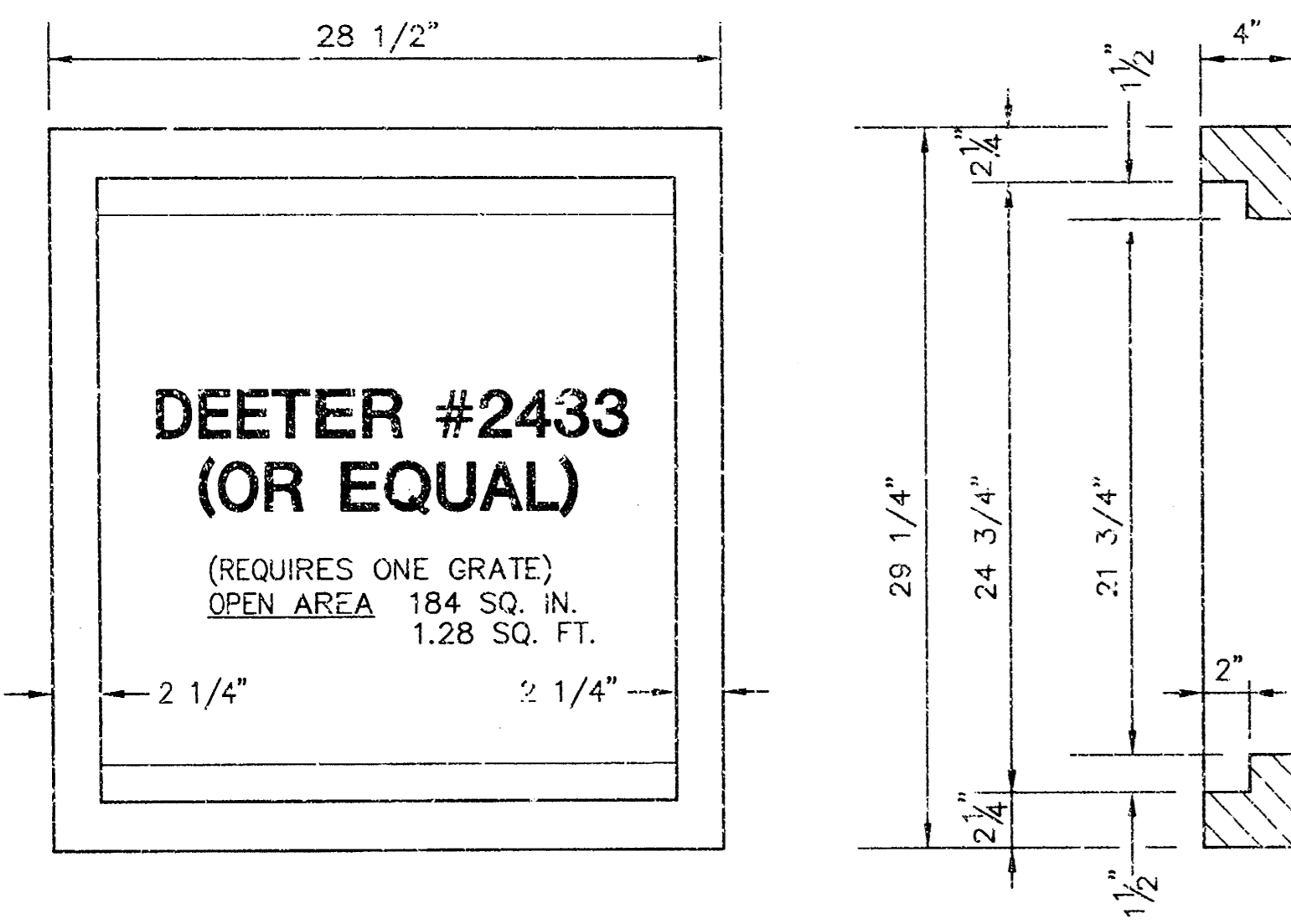


**PROFILE - LINE 1**  
HORIZONTAL SCALE: 1" = 30'  
VERTICAL SCALE: 1" = 5'

NOTE: GRATES SHALL BE IMPRINTED ON THE TOP SURFACE WITH "CITY OF WICHITA" USING LETTERS AT LEAST 1" IN HEIGHT. OTHER MARKING METHODS MAY BE USED ONLY IF APPROVED BY THE ENGINEER.



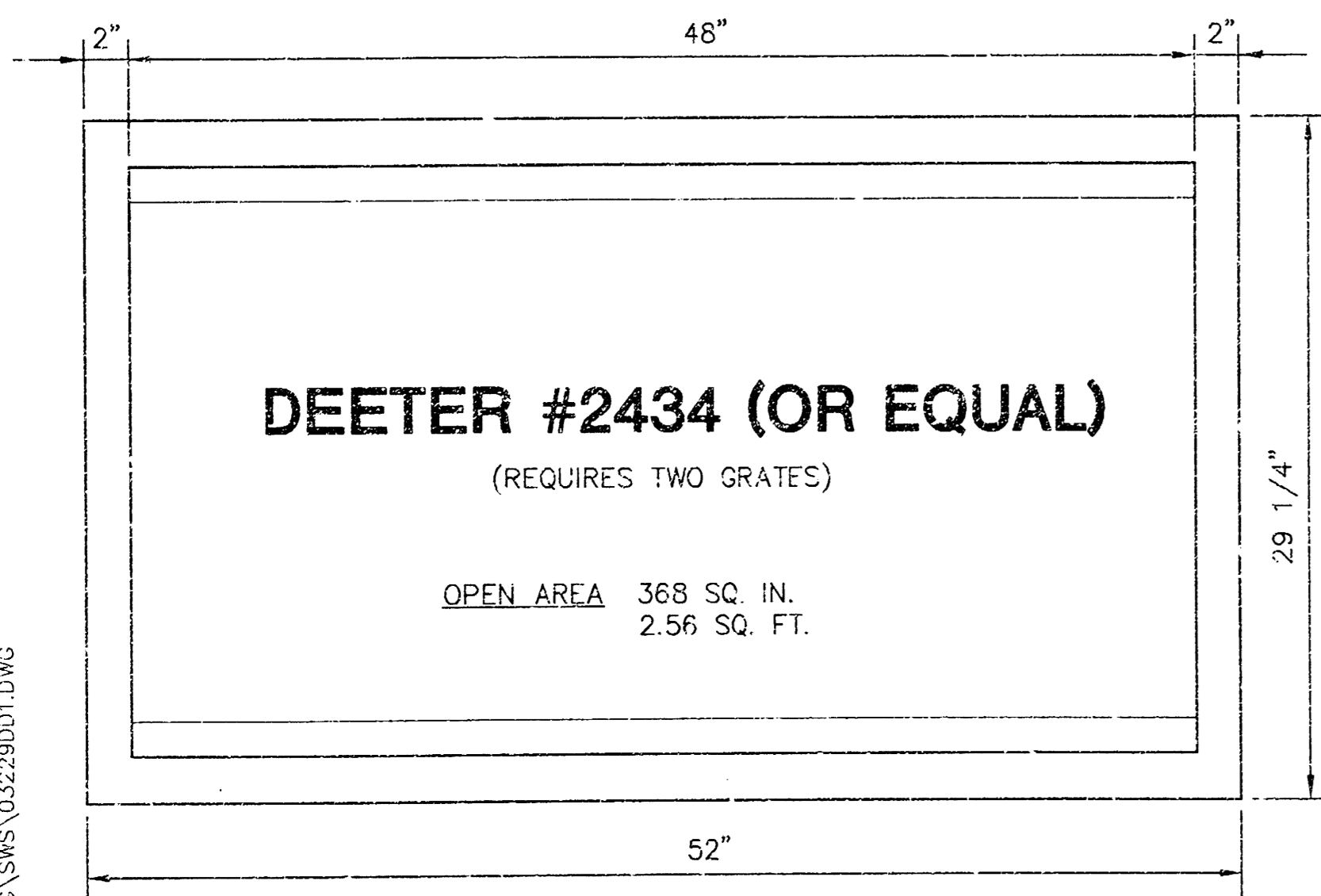
24"x24" GRATE DETAIL



**DEETER #2433 (OR EQUAL)**

(REQUIRES ONE GRATE)  
OPEN AREA 184 SQ. IN.  
1.28 SQ. FT.

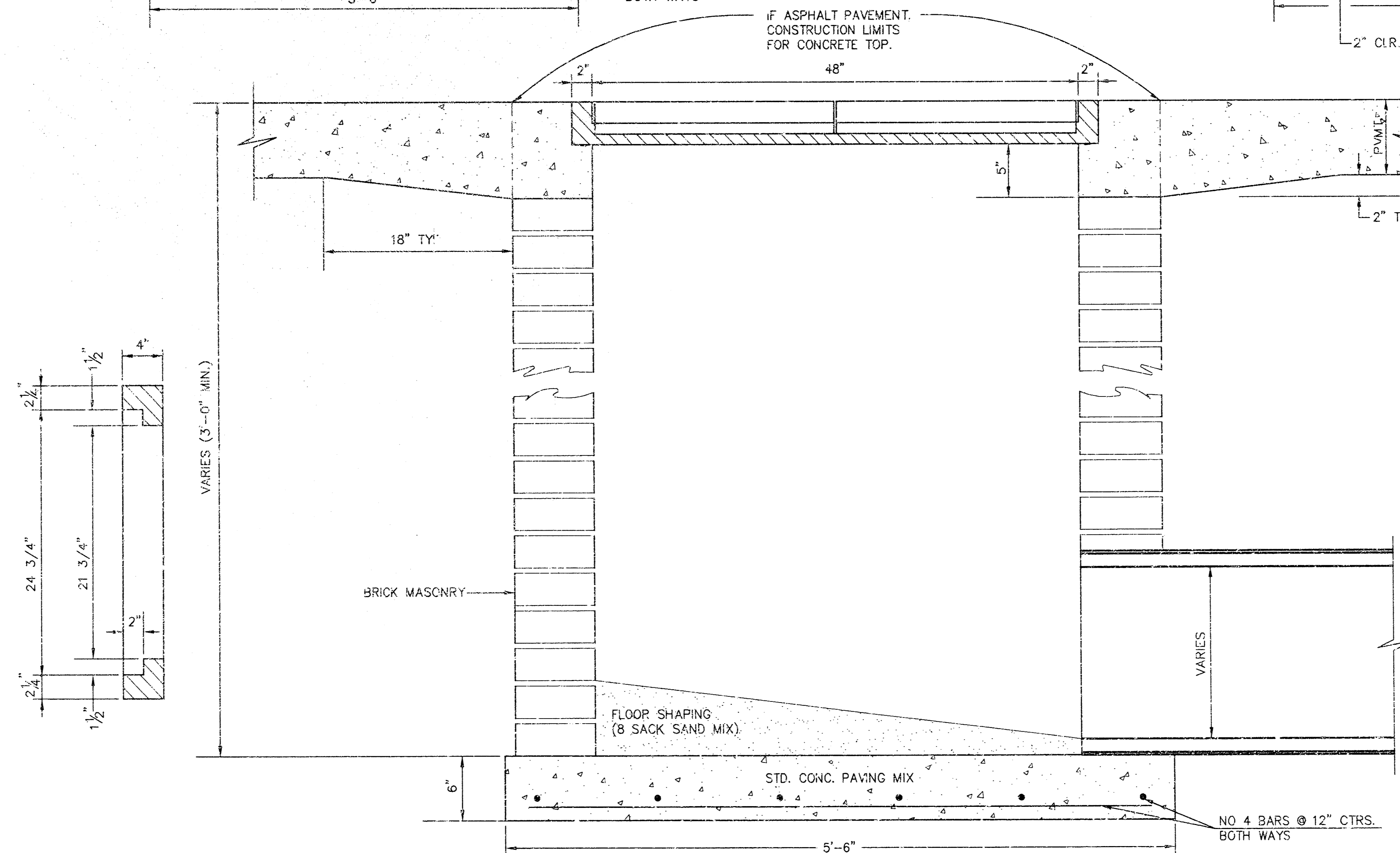
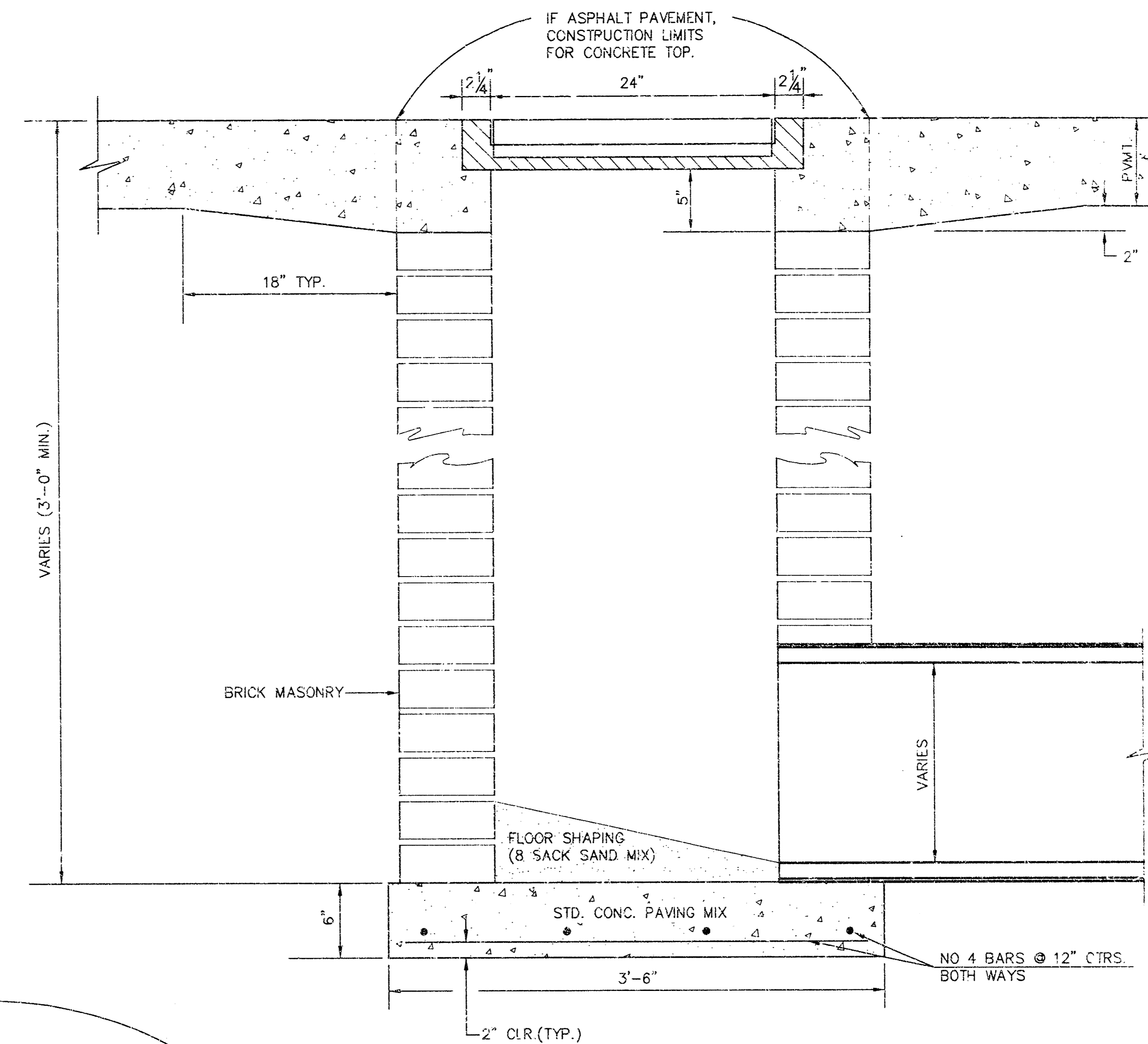
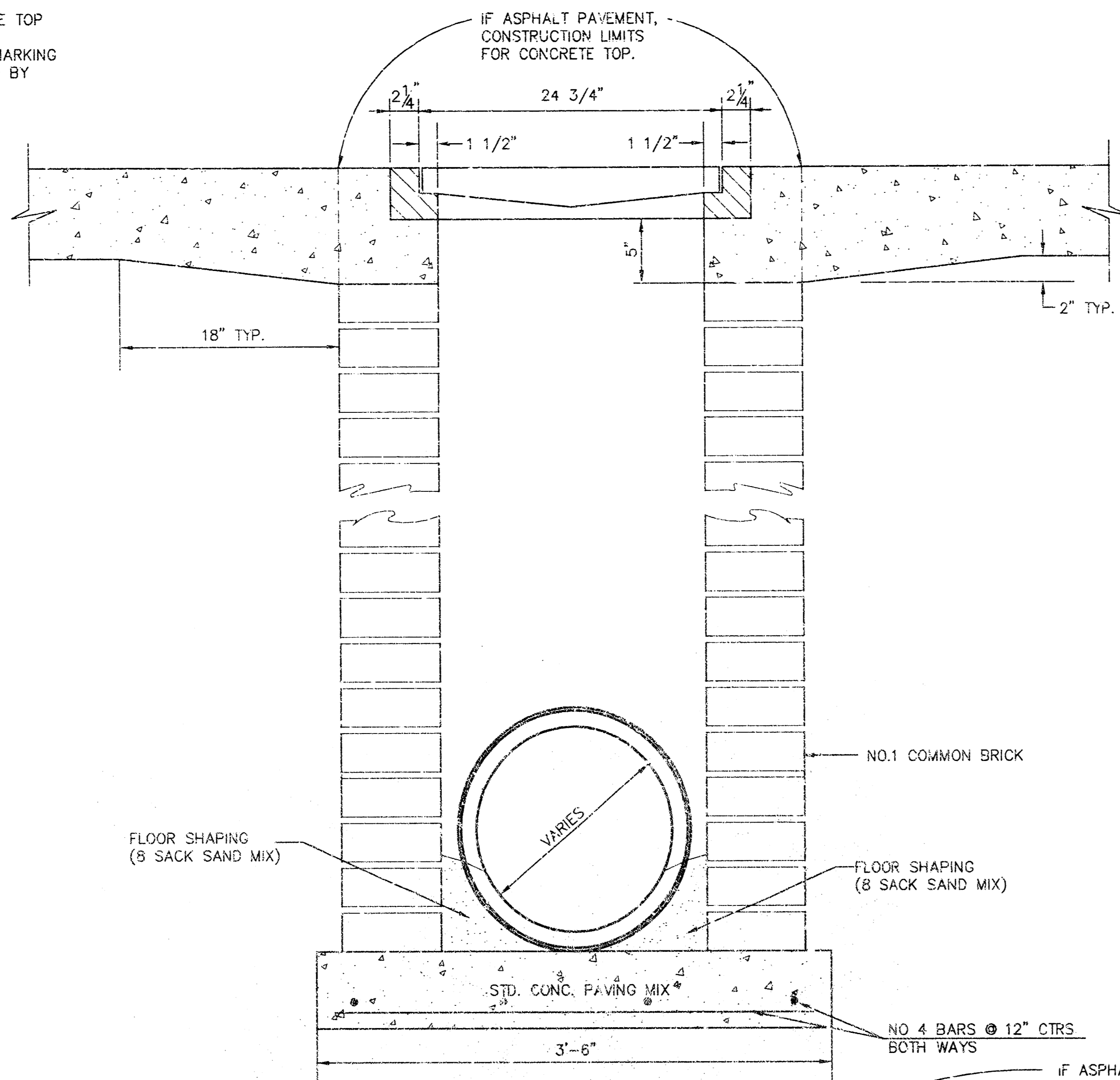
SINGLE 24"x24" FRAME DETAIL



**DEETER #2434 (OR EQUAL)**

(REQUIRES TWO GRATES)  
OPEN AREA 368 SQ. IN.  
2.56 SQ. FT.

DOUBLE 24"x24" FRAME DETAIL



ORIFICE EQUATION		
$Q = C \cdot A \cdot \sqrt{2gh}$ $C = 0.60$		
h (DEPTH)	#2433 (SINGLE)	#2434 (DOUBLE)
0.1	1.95 cfs	3.89 cfs
0.2	2.75 cfs	5.50 cfs
0.3	3.37 cfs	6.74 cfs
0.4	3.89 cfs	7.78 cfs
0.5	4.35 cfs	8.70 cfs
0.6	4.77 cfs	9.53 cfs
0.7	5.15 cfs	10.30 cfs
0.8	5.50 cfs	11.01 cfs
0.9	5.84 cfs	11.67 cfs
1.0	6.15 cfs	12.30 cfs

REVISED: 5-8-90 JNJ

**DROP INLET DETAILS**

CITY OF WICHITA, KANSAS

Design C.O.W.	Checked by	Checked by	3/3
Drawn by	Date	Date	Job No

15 50 40 81