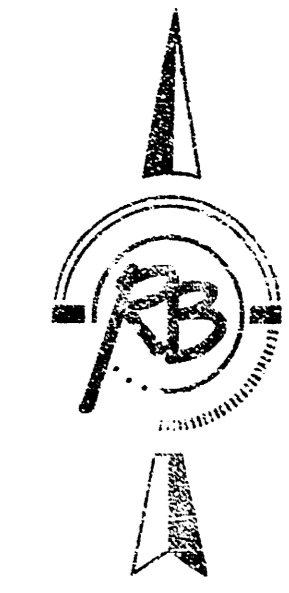


PARKING LOT IMPROVEMENTS FOR THE ELMS APARTMENTS INCLUDING PRIVATE STORM SEWER 1420 PPS (607861)

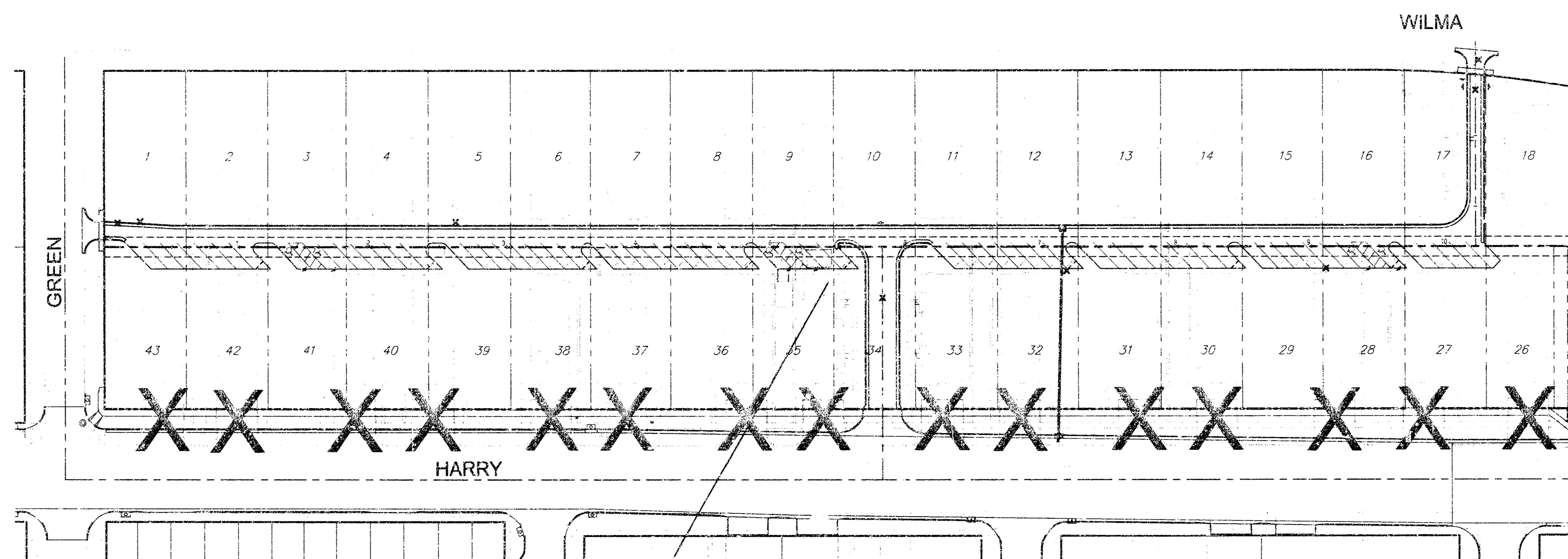
LOTS 1-18 and 43-26, BLOCK 20
SCHWEITER'S 9th ADDITION



SCALE: 1" = 60'

GENERAL NOTES

- SANITARY SEWER MANHOLE MODIFICATIONS AND STORM SEWER CONSTRUCTION TO BE CONSTRUCTED AND INSPECTED UNDER CITY OF WICHITA PRIVATE PROJECT #1420 PPS (SEE SHEET 5), IN ACCORDANCE WITH CITY STANDARD SPECIFICATIONS AND POLICY ON CONSTRUCTION OF PUBLIC WORKS BY PRIVATE CONTRACT.
- PAVEMENT CONSTRUCTION TO BE IN ACCORDANCE WITH CITY STANDARD SPECIFICATIONS.
- PAVEMENT LAYOUT DIMENSIONS ARE TO FACE OF CURB AND/OR EDGE OF PAVEMENT.
- NO WORK SHALL BEGIN ON SEWER AND STORM SEWER PORTIONS OF THIS PROJECT BEFORE REQUIRED BONDS ARE SUBMITTED TO THE CITY OF WICHITA, AND THE PROJECT INSPECTOR HAS BEEN NOTIFIED.
- ALL AREAS OF PUBLIC R/W DISTURBED BY CONSTRUCTION OF THIS PROJECT ARE TO BE RESTORED IN ACCORDANCE WITH ADMINISTRATIVE REGULATION AR 78 OF THE CITY OF WICHITA.
- TWO-WAY TRAFFIC ON HARRY, GREEN AND WILMA SHALL BE MAINTAINED DURING CONSTRUCTION.



Office Address
2732 E. Harry

59 NEW REGULAR PARKING SPACES
6 NEW HANDICAPPED SPACES
-60 EXISTING PARKING SPACES (TO BE REMOVED)
+5 NET INCREASE IN PARKING SPACES

INDEX OF SHEETS

- TITLE SHEET
- ~~SEWER PLAN~~
- ~~STORM SEWER PLAN~~
- STORM WATER SEWER PLAN
- DROP INLET DETAILS
- ~~PROPOSED DRIVEWAY APPROACHES~~
- ~~SEE SEWER PLAN FOR DETAILS~~

BENCHMARKS

- BM "□" CUT ON WEST TOP OF CURB OF GREEN
98.5' ± SOUTH OF SECTION LINE ON HARRY.
ELEV. 1287.73
- BM "□" CUT ON WEST TOP OF CURB OF VOLUTSIA
113.2' ± SOUTH OF SECTION LINE ON HARRY.
ELEV. 1288.47

APPROVED AS NOTED
BY CITY ENGINEER OF WICHITA

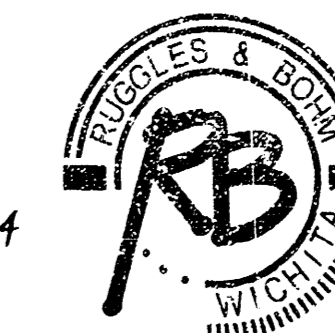
Sanitary Sewers _____
Storm Sewers VRH 2/11/04
Driveway Approaches _____
Water Mains _____
Paving _____

NOTE TO CONTRACTORS

Inspection and testing for this project are to be provided by a Licensed Consulting Engineering Firm under contract with the Owner/Developer. Said inspection to be in accordance with the City of Wichita standard construction engineering practices and certified by a Licensed Professional Engineer. No work shall be performed in dedicated easements or public right-of-way by the Contractor without such inspection, nor shall any work be commenced without written authorization by the City Engineer.

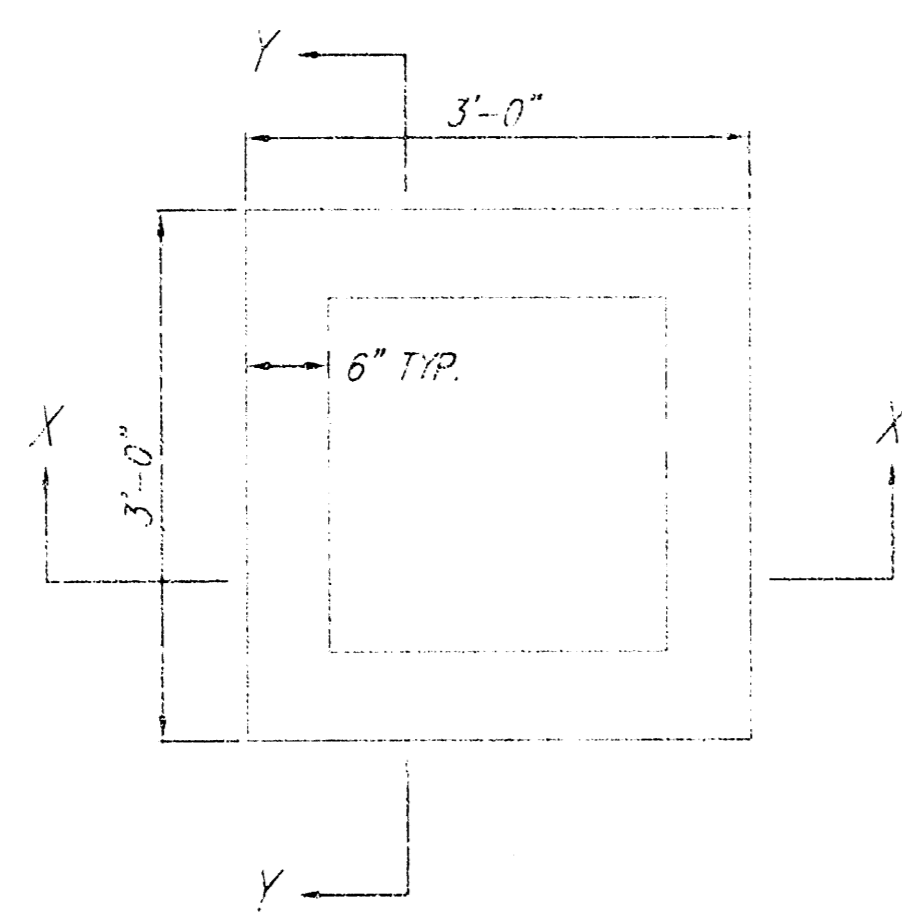


REV. AS BUILT 9-14-04
JCK



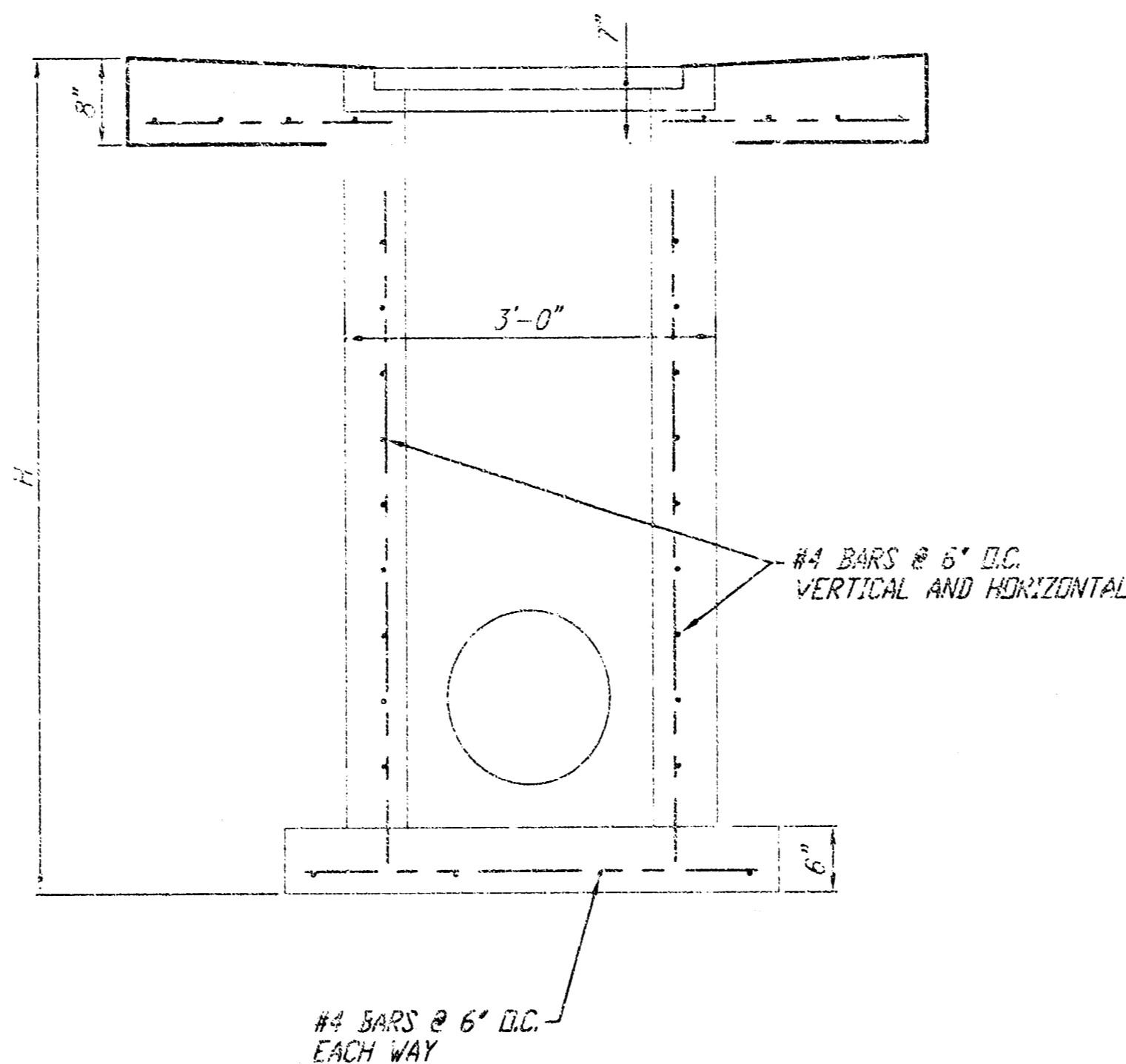
Ruggles & Bohm, P.A.
Engineering, Surveying, Land Planning
924 North Main (316) 284-8008
Wichita, Kansas 67203 (316) 284-4621 fax
www.rbkansas.com E-mail: info@rbkansas.com

14 09 01 11

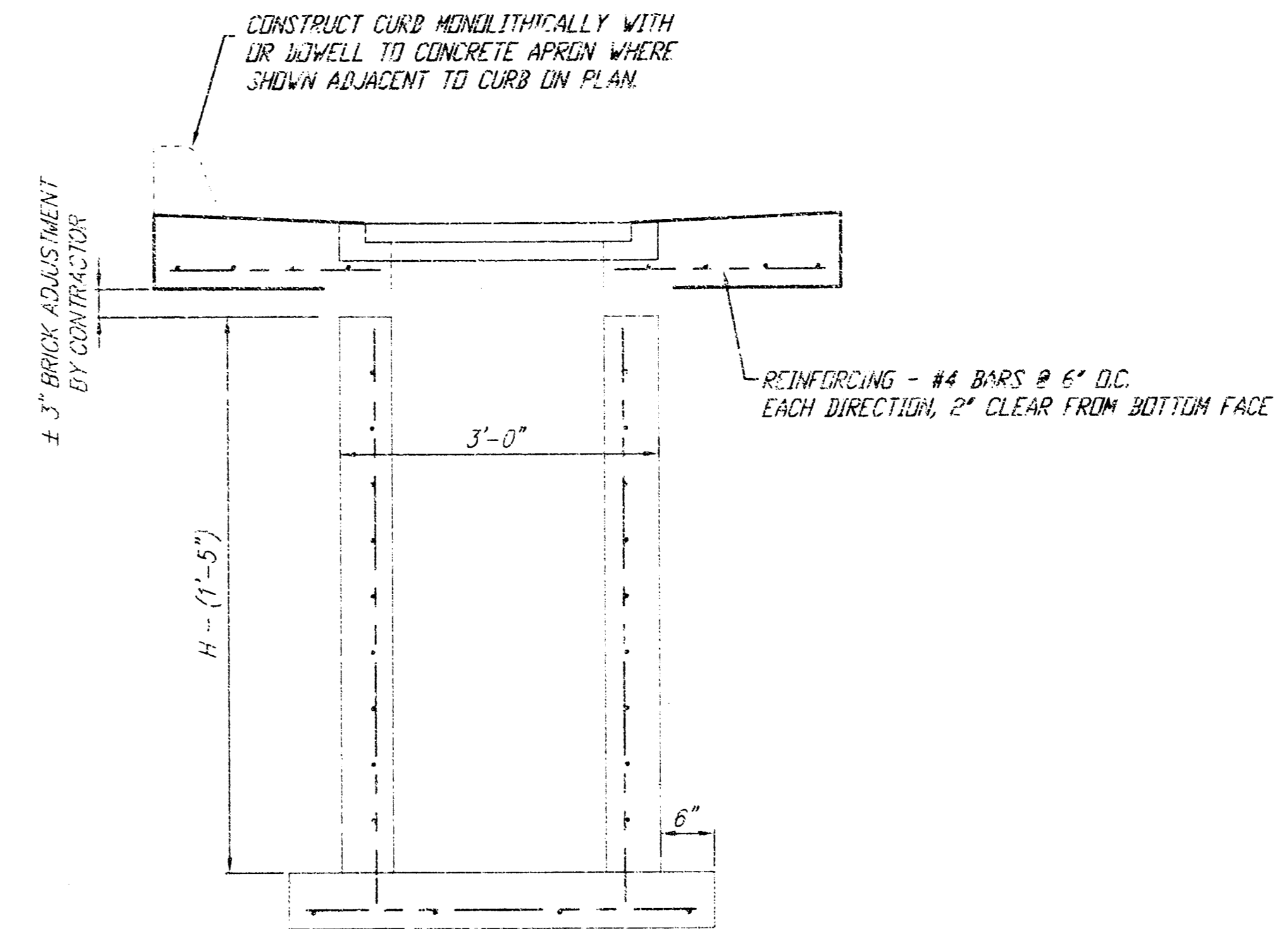


PLAN

NOTE: FRAME AND GRATE TO BE
DEETER FOUNDRY 2410 OR APPROVED EQUAL
INLET MAY BE PRECAST OR CAST-IN-PLACE



SECTION X-X




SECTION Y-Y

DROP INLET DETAIL

GENERAL NOTES:

1. MORTAR USED IN MASONRY CONSTRUCTION SHALL CONTAIN 8 BAGS OF CEMENT PER CUBIC YARD. CONCRETE USED IN INLET WALLS AND BASES SHALL CONFORM TO THE REQUIREMENTS FOR CONCRETE PAVEMENT CONSTRUCTION AS SPECIFIED IN THE CITY STANDARD PAVING SPECIFICATIONS, USING CITY CONCRETE PAVEMENT MIX WITHOUT AIR ENTRAINING ADHIXTURE. MORTAR SHALL BE PLACED AROUND THE INLET FRAME AS SHOWN ON THE DRAWINGS WHEN INLETS ARE CONSTRUCTED IN UNPAVED AREAS. COMPLETED INLET SHALL BE WITHOUT LEAKS AND WATER TIGHT.
2. THE FLOORS OF ALL INLETS SHALL BE SHAPED WITH FLOW CHANNELS SUCH THAT THE INLETS WILL BE SELF CLEANING. USING 8-SACK SAND MIX CONCRETE. FLOW CHANNELS SHALL BE FORMED TO MATCH THE BOTTOM HALVES OF THE INFLUENCING PIPES AND THE OUTFLOWING PIPE. INLET FLOORS SHALL HAVE SLOPES OF 3 INCHES PER FOOT IN THE AREAS OUTSIDE OF THE FLOW CHANNELS SLOPED TOWARD THE FLOW CHANNELS.
3. INLET COVER CASTINGS AND INLET FRAME CASTINGS SHALL CONFORM TO THE REQUIREMENTS AS INDICATED IN THE STANDARD SPECIFICATIONS AND AS SHOWN IN THE STANDARD DETAIL DRAWING.
4. THE ENDS OF ALL PIPES IN INLETS SHALL BE CUT OFF FLUSH WITH THE INSIDE FACE OF INLET WALL.

DROP INLET DETAILS WICHITA, KANSAS		DESIGN TCR	DRAWING RA REVIEW RA UTILITY	SHEET 7 OF 10
 Ruggles & Bohm, P.A. Engineering, Surveying, I. and Planning 924 North Main Wichita, Kansas 67203 www.rbkansas.com (316) 264-8008 (316) 264-4521 fax E-mail: info@rbkansas.com		DATE Feb. 10, 2004		
DRAWING FILE Bose [SWS 01]	PROJECT NUMBER 1420 PPS			