

Scale: 1" = 20'
 Vert: 1" = 5'

B.M. 198.85 USGS 28' S of \pm PAWNEE & 530' W. of \pm CAPRI
 B.M. 188.25 City Std 62' E and 53' N. of \pm s ROCK ROAD and PAWNEE

200
 195
 190

200
 195
 190

8 LF of 30" RCP @ 1.05%
 Alt. 8 LF of 30" CMP @ 1.05%
 (fully paved) 11/1

Install 52 LF of 30" RCP @ 1.05%
 Alt. 52 LF of 30" CMP @ 1.05%

Install 288 LF of 24" RCP @ 1.05%
 Alt. 288 LF of 24" CMP @ 1.05%

St. Sta. 0+00, S.L. Lot 6, B.L. 1/2, 1/2 Inlet
 Connect Pipe to Existing 30" Stub
 St. Sta. 0+50, Constr. Type IA Curb
 Inlet, W=5'0", Top = 199.56

St. Sta. 0+59.5, Constr. Type IA
 Curb Inlet, W=5'0", Top = 199.36

St. Sta. 10+55.16 Lt.
 Constr. Type IA Curb Inlet
 W=6'0", Top = 197.68
 Existing 36" Pipe R. = 191.83

St. Sta. 11+18.84 Rt.
 Constr. Type IA Curb Inlet
 W=4'2", Top = 197.92
 Install 72 LF of 15" Pipe
 USFL = 194.68, DSFL = 193.90

St. Sta. 10+55.16 Rt.
 Constr. Type IA Curb Inlet
 W=4'2", Top = 197.76
 Install 39 LF of 18" Pipe
 USFL = 193.65, DSFL = 193.33

St. Sta. 8+2884 Rt.
 Constr. Type IA Curb Inlet
 W=4'2", Top = 198.94
 Install 57 LF of 15" Pipe
 USFL = 194.20, DSFL = 193.65

St. Sta. 0+08, St. Sta. 7+83 Lt.
 Constr. Type IA Curb Inlet
 W=5'0", Top = 199.36

St. Sta. 0+59.5, St. Sta. 7+53.16 Rt.
 Constr. Type IA Curb Inlet
 W=5'0", Top = 199.36
 Install 26 LF of 18" Pipe
 USFL = 193.40, DSFL = 193.10

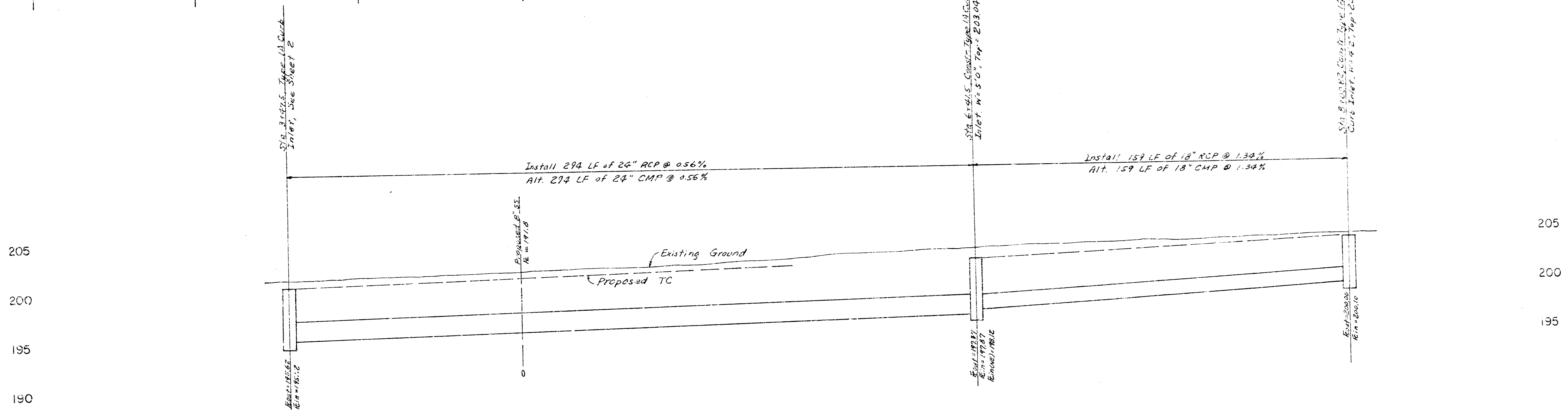
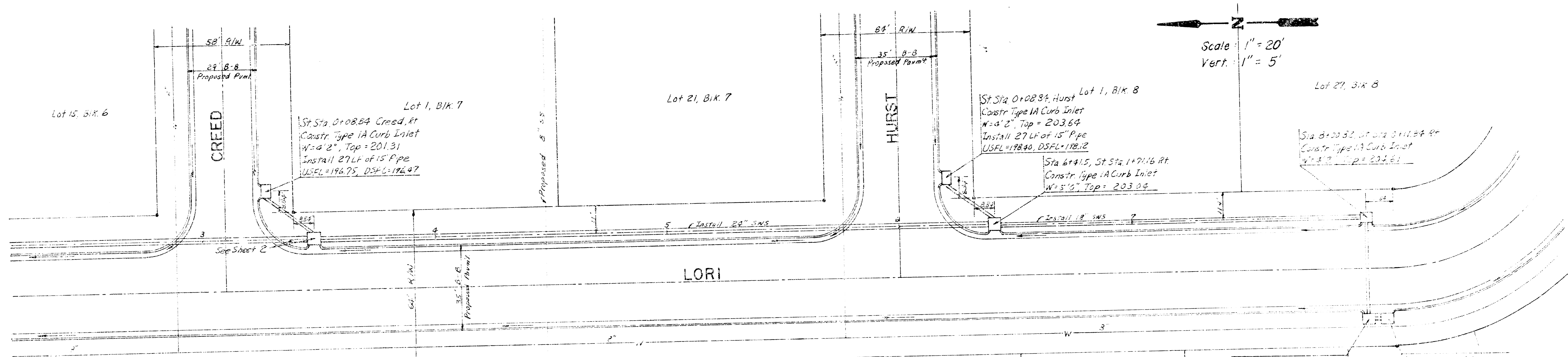
St. Sta. 0+08, Marion Lot 1, BIK 6
 Constr. Type IA Curb Inlet
 W=4'2", Top = 199.14
 Install 26 LF of 18" Pipe
 USFL = 193.40, DSFL = 193.10

St. Sta. 3+19.5, St. Sta. 4+65.16
 Constr. Type IA Curb Inlet
 W=5'0", Top = 201.11

St. Sta. 3+19.5, St. Sta. 4+65.16
 Constr. Type IA Curb Inlet
 W=5'0", Top = 201.11

19902
 19907
 19512
 SWS # 202

FILMED FROM THE BEST
 AVAILABLE COPY.....



4 196.01
5 196.57
6 197.13
7 198.65
8

FILED FROM THE BEST AVAILABLE COPY