

CITY OF WICHITA, KANSAS

STORM WATER SEWER NO. 204 (NORTHWEST VILLAGE)

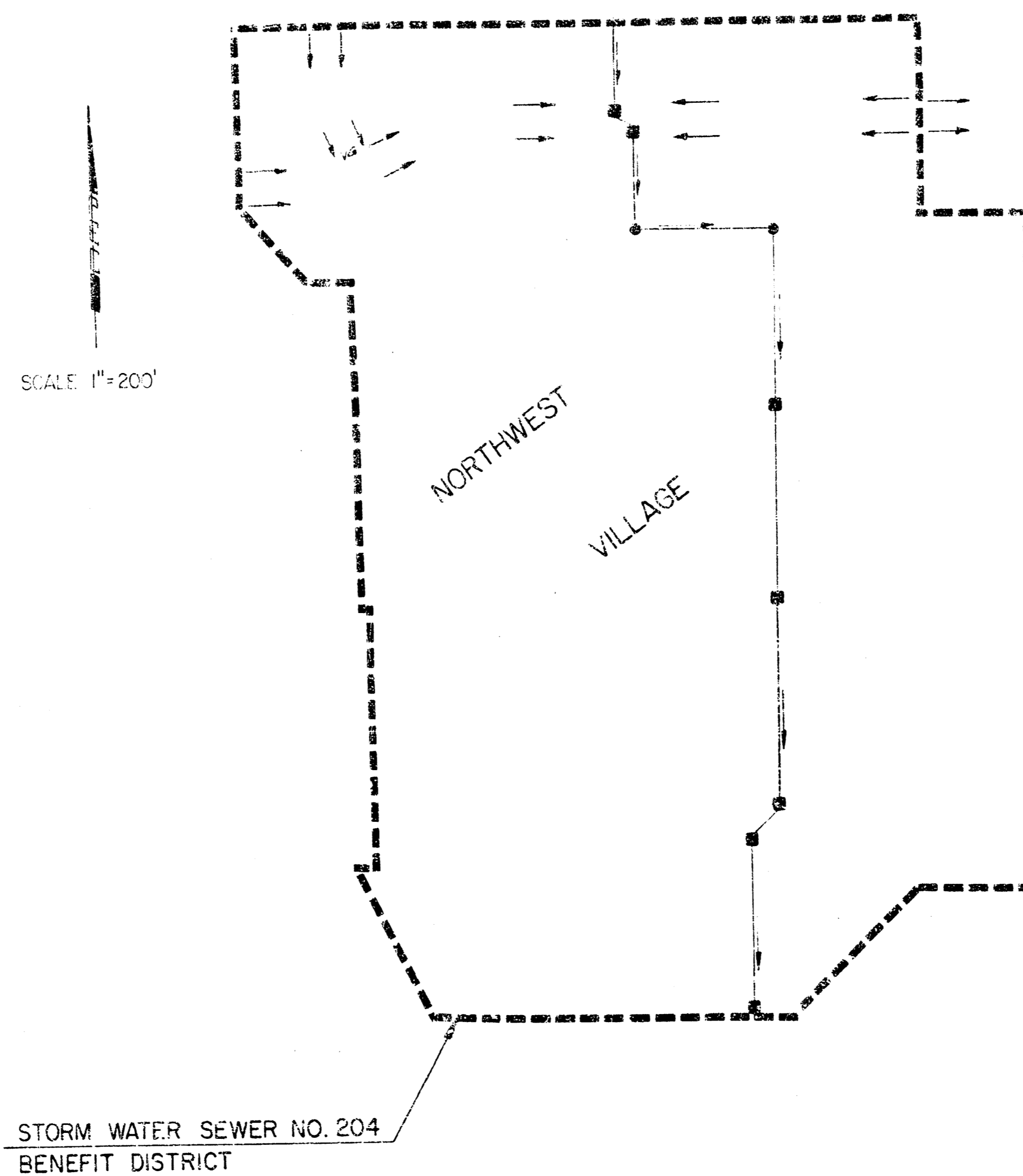
PROJECT NO. 468-76-245-81040-000-000-001

BENCH MARKS

- B.M. - C.O.W. standard disc located 31' south and 36' east of W 1/4 corner Sec. 9, T27S, R1W, 6th P.M. Elev. = 172.48
- B.M. - Chis "I" in SW corner headwall @ concrete box approx. 50' N of SW corner Sec. 9, 27S/1W Elev. = 156.60
- B.M. - Chis "I" NE corner storm drain box N/side of 13th St approx. 12.40' ± east of SW corner Sec. 9, 27S/1W Elev. = 161.52
- B.M. - Chis "I" SW corner concrete box which lies approx. 840' ± E of SW corner Sec. 9, 27S/1W (N. side 13th St.) Elev. = 162.48
- B.M. - NW corner 4'x4' concrete pad with C.O.W. M.H. behind curb on NW corner of intersection Tyler & 13th St. N. Elev. = 167.55

LEGEND

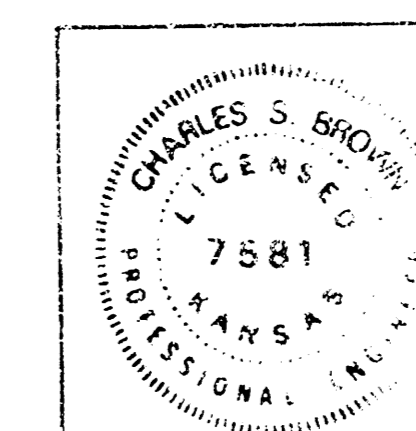
- BENEFIT DISTRICT BOUNDARY
- DRAINAGE FLOW DIRECTION
- PROPOSED INLET
- PROPOSED MANHOLE



INDEX OF SHEETS

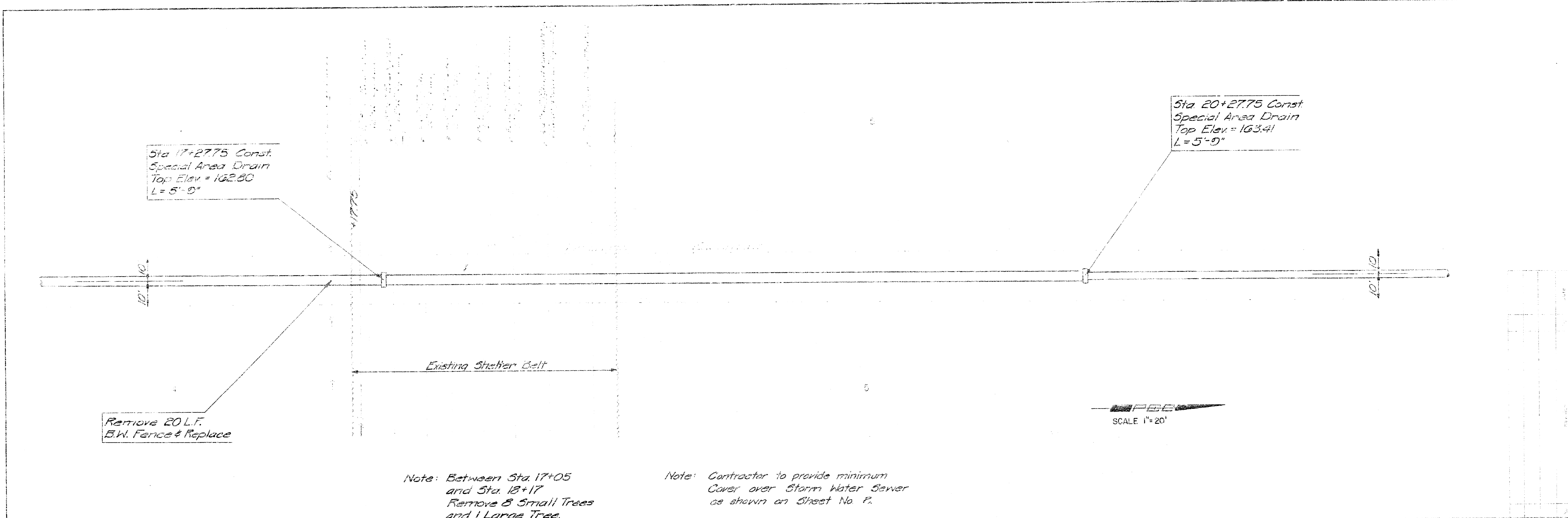
1. TITLE SHEET
- 2-5. PLAN & PROFILE SHEETS
6. R.C.B.C. EXTENSION
7. SPECIAL AREA DRAIN
8. DETAIL STANDARD TYPE IA CURB INLET
9. DETAIL PRE-CAST TYPE IA INLET
10. STANDARD DETAILS REINFORCED CONCRETE MANHOLES

NOVEMBER, 1980



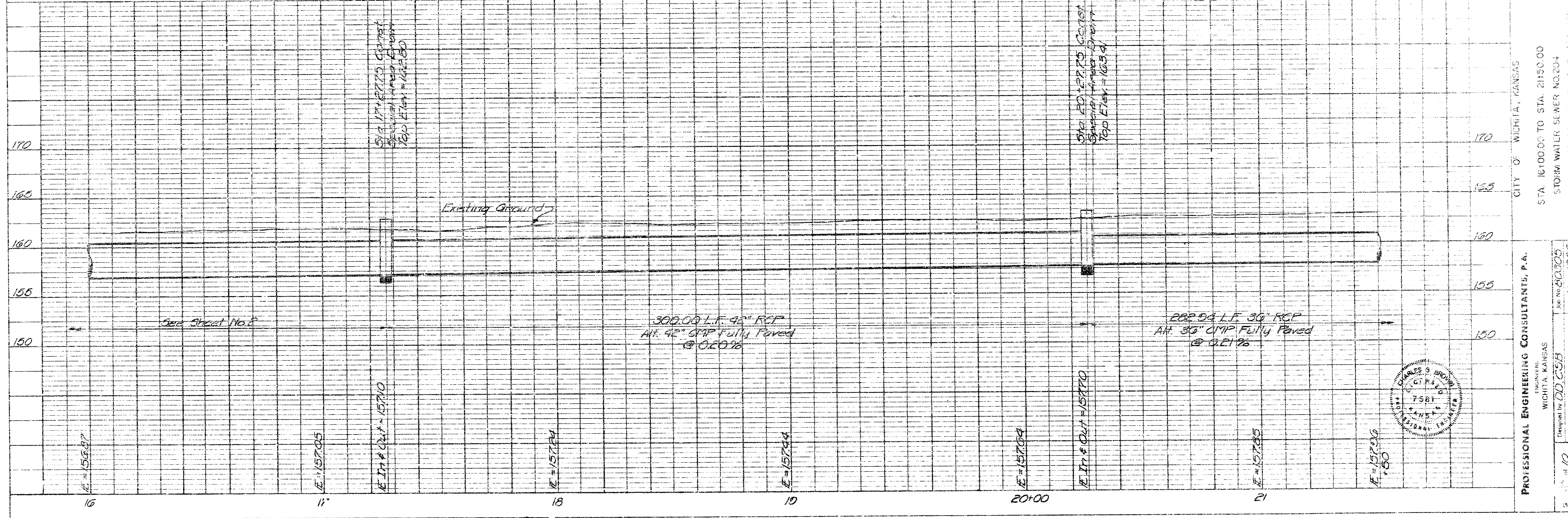
CITY OF WICHITA, KANSAS	
TITLE SHEET	
STORM WATER SEWER NO. 204	
PROJ. NO. 468-76-245-81040-000-000-001	
PROFESSIONAL ENGINEERING CONSULTANTS, P.A.	
ENGINEERS WICHITA, KANSAS	
Designed by <u>DD, CSB</u>	Job No. <u>20305</u>
Drawn by <u>GPH</u>	Date <u>Nov. 1980</u>

FILMED FROM THE BEST AVAILABLE COPY



Note: Between Sta. 17+05 and Sta. 18+17 Remove 8 Small Trees and 1 Large Tree.

Note: Contractor to provide minimum Cover over Storm Water Sewer as shown on Sheet No. 7.



CITY OF WICHITA, KANSAS
 STA. 16+00 TO STA. 21+50.00
 STORM WATER SEWER NO. 204

PROFESSIONAL ENGINEERING CONSULTANTS, P.A.
 WICHITA, KANSAS
 Prepared by: **DD, CSB**
 Drawn by: **GRH**
 Job No. **20306**
 Date: **Nov. 12, 2000**
 Sheet No. **10** of **10**

SCALE 1"=20'

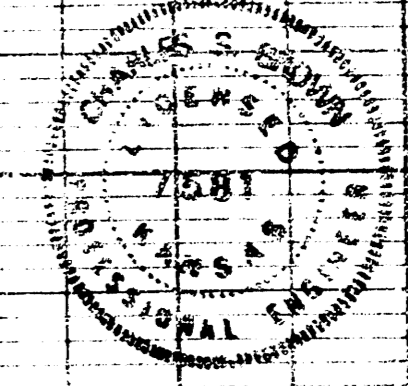
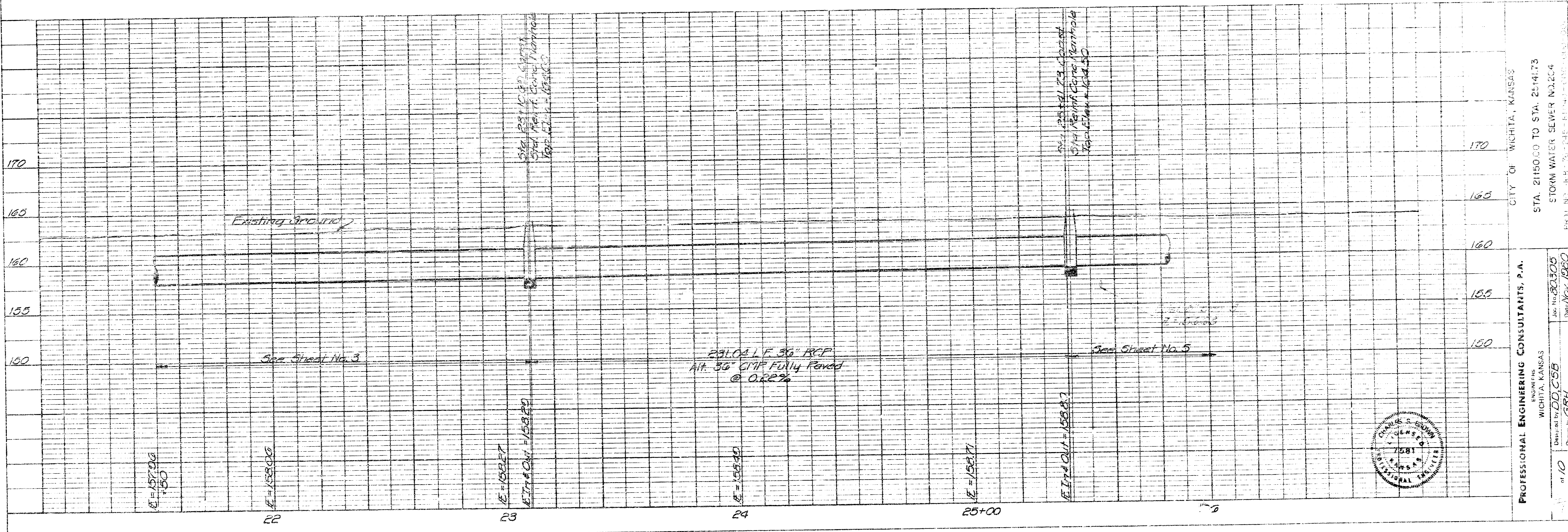
Sta 23+10.69 Const.
Std. Reinf. Conc. Manhole
W/wide Flange MH Ring
Top Elev. = 164.00
H = 5'-0", Stock = 0.62'
L = 5'-6", W = 5'-6"

Sta 23+10.69
@ P.I.

Const. MH on
E Extended

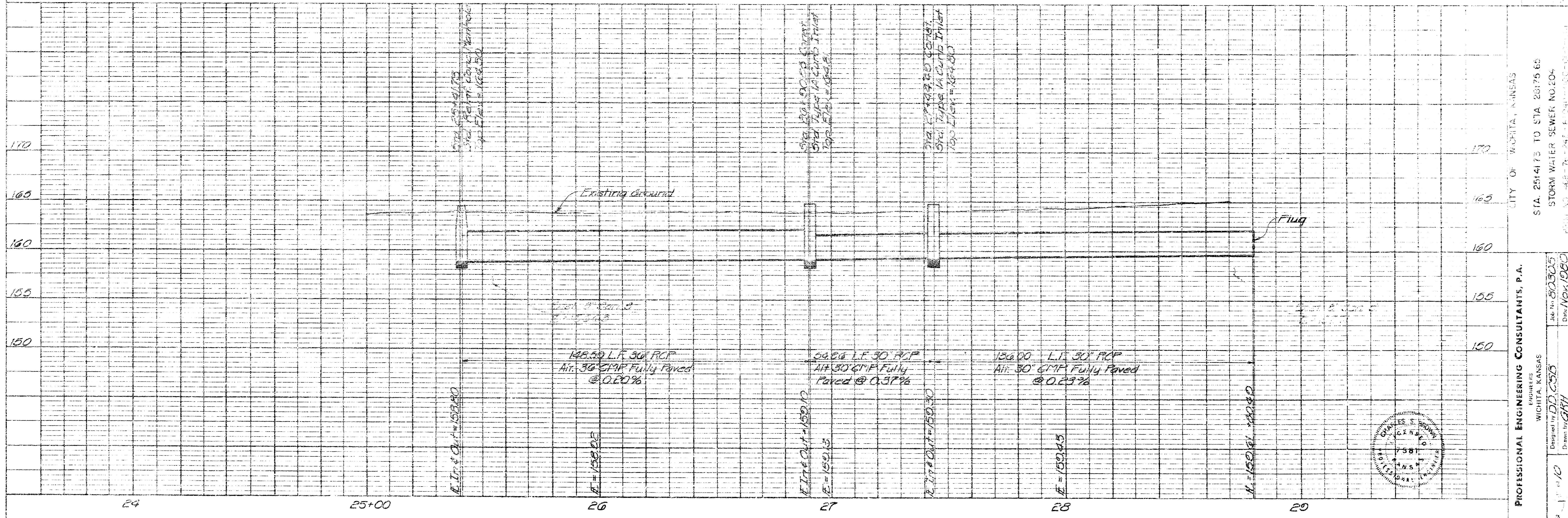
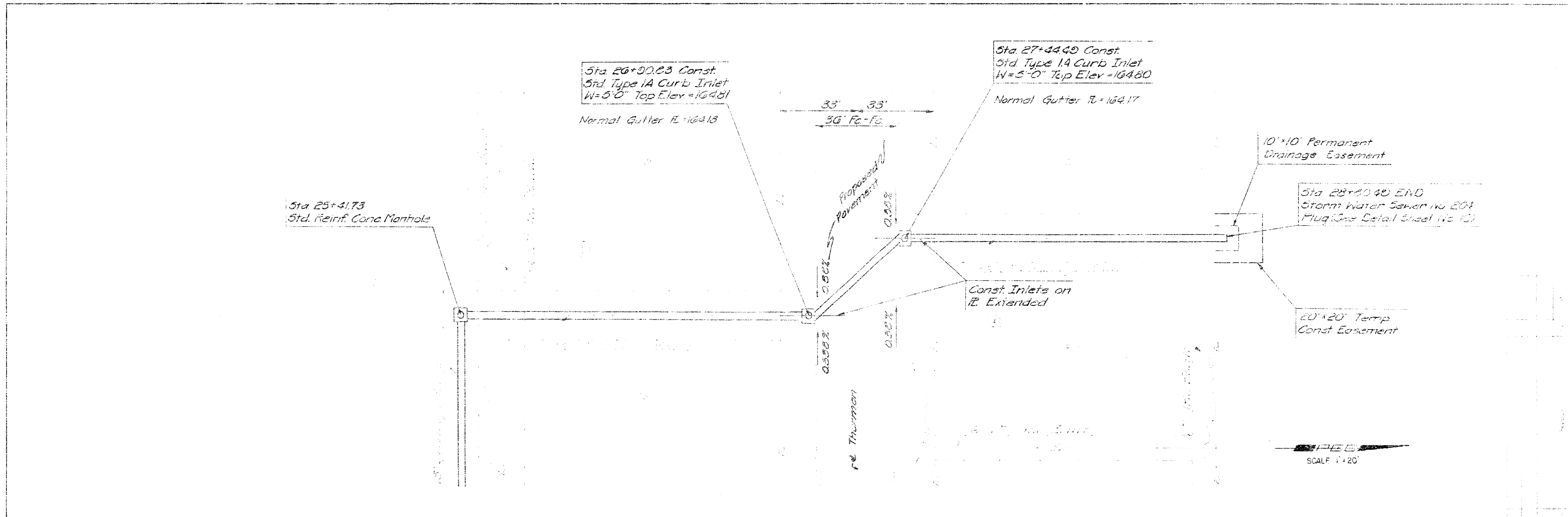
Sta 25+41.73
@ P.I.

Sta 25+41.73 Const.
Std. Reinf. Conc. Manhole
W/wide Flange MH Ring
Top Elev. = 164.50
H = 5'-0", Stock = 0.61'
L = 5'-6", W = 5'-6"

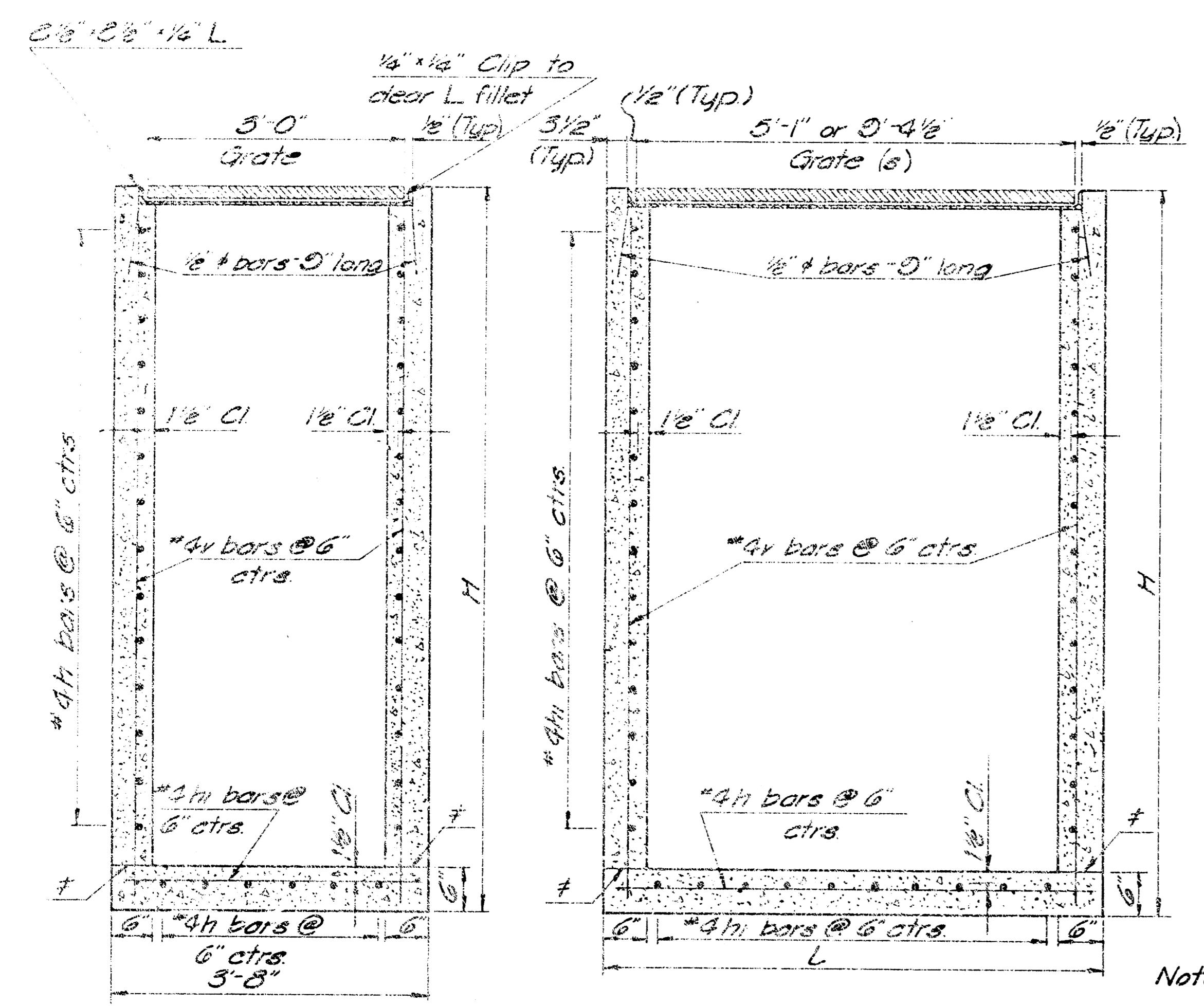


CITY OF WICHITA, KANSAS
 STA. 2150.00 TO STA. 25+41.73
 STORM WATER SEWER INJ.22.4

PROFESSIONAL ENGINEERING CONSULTANTS, P.A.
 ENGINEERS
 WICHITA, KANSAS
 Drawn by DD, CSB
 Date/Rev. 10/30
 of 10



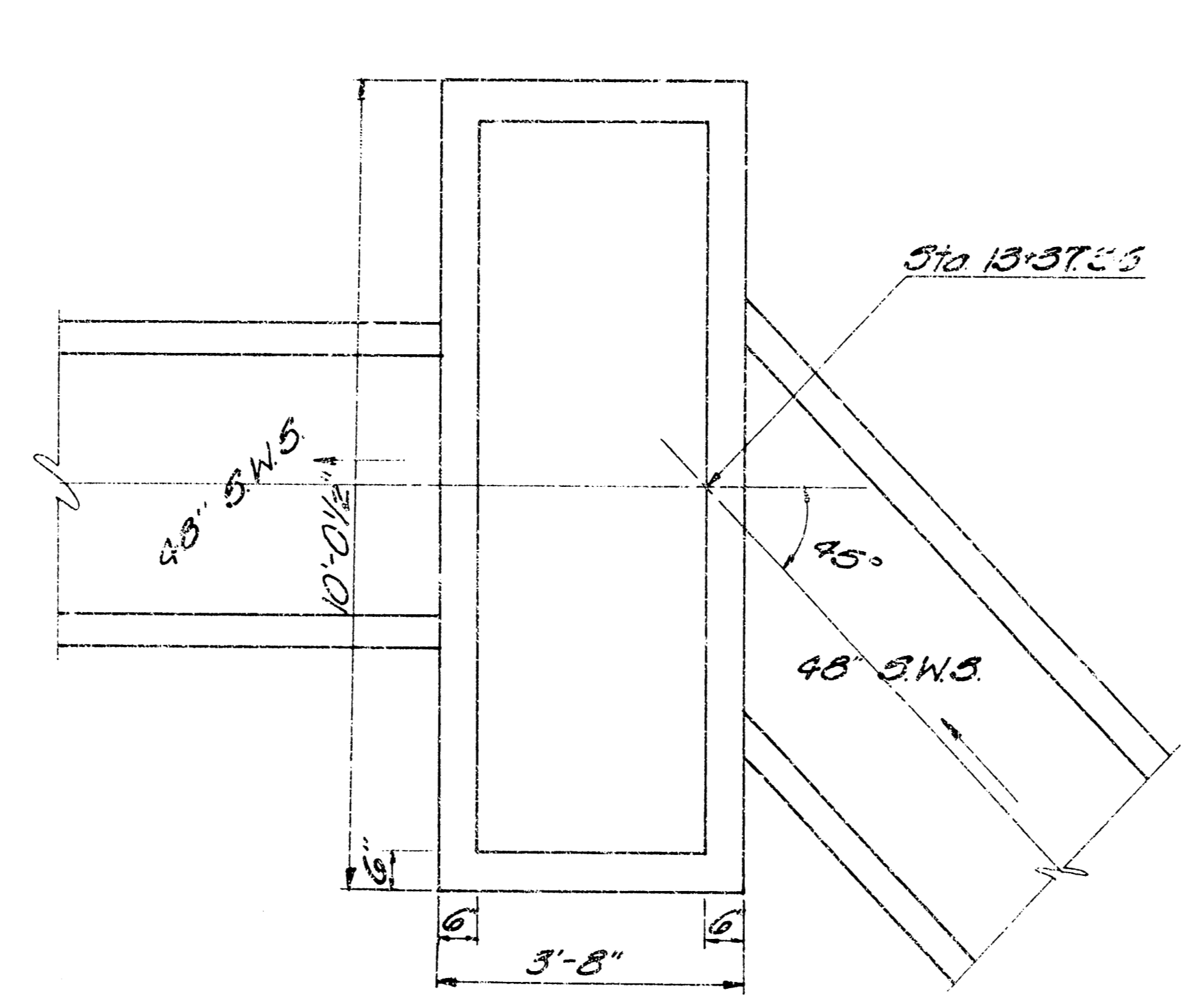
† Roughened Construction Joint



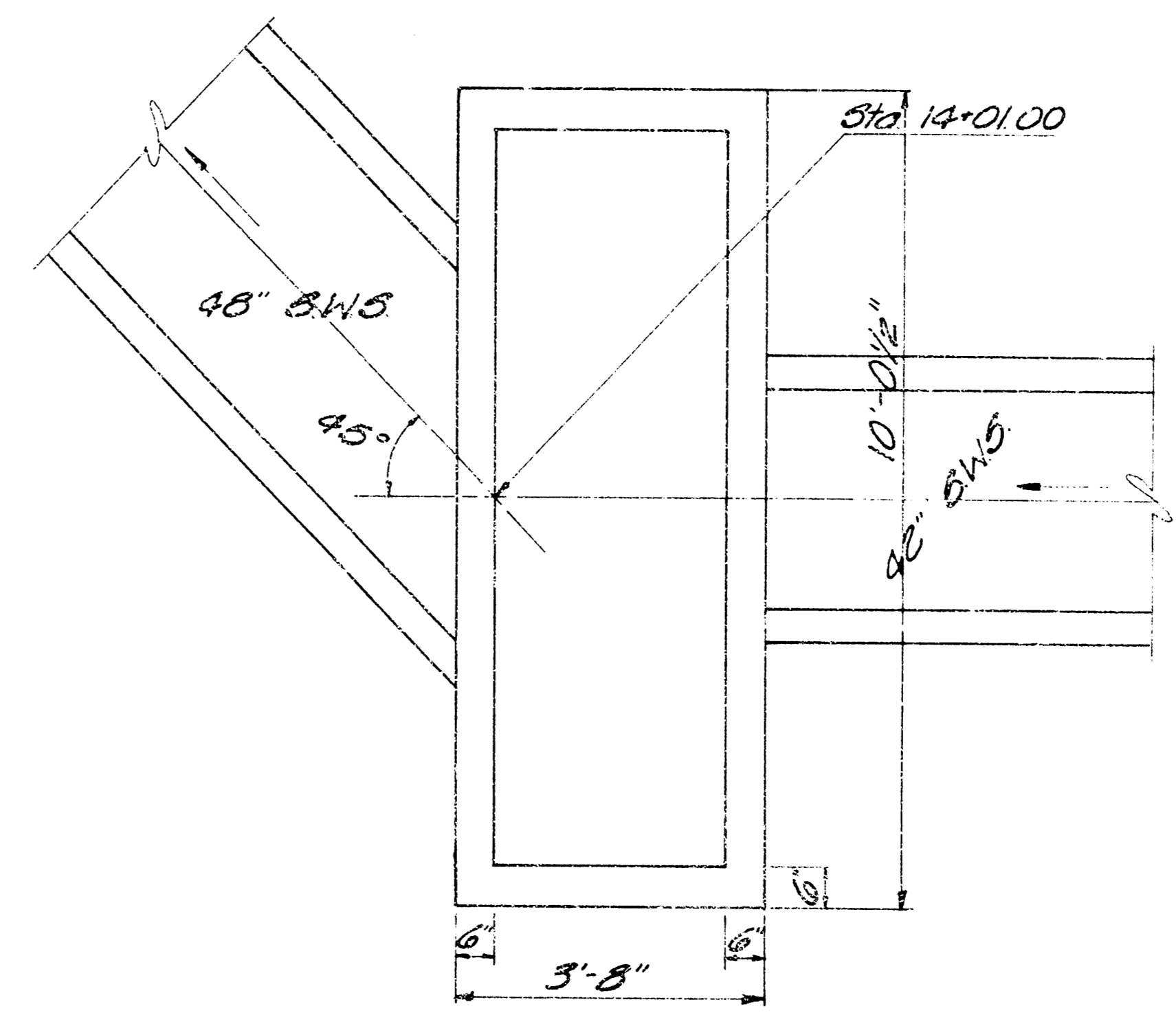
SECTION C-C

SECTION D-D

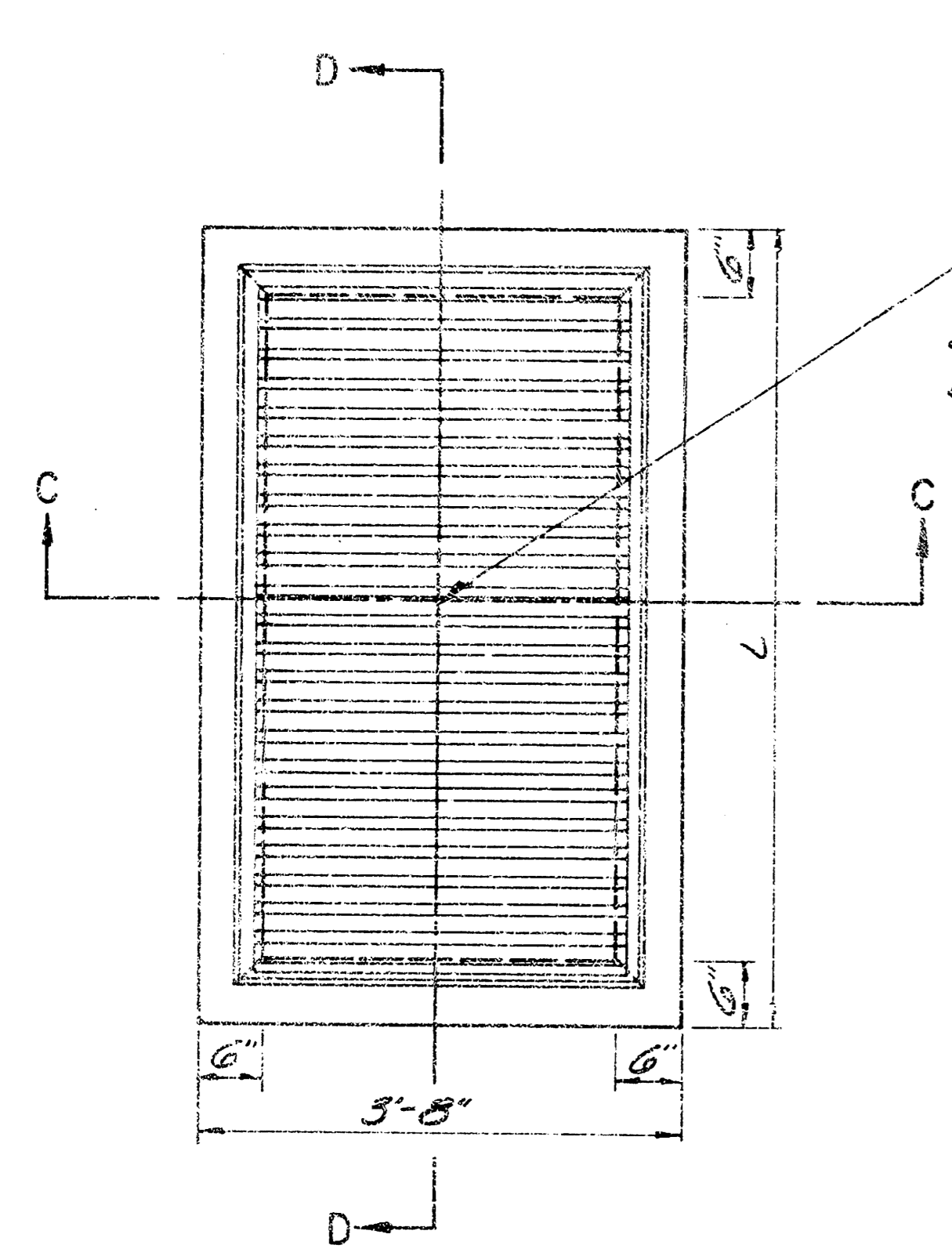
Note: H to be determined from Plan-Profile Sheets



SPECIAL AREA DRAIN LOCATION DIAGRAM
Sta 13+37.36

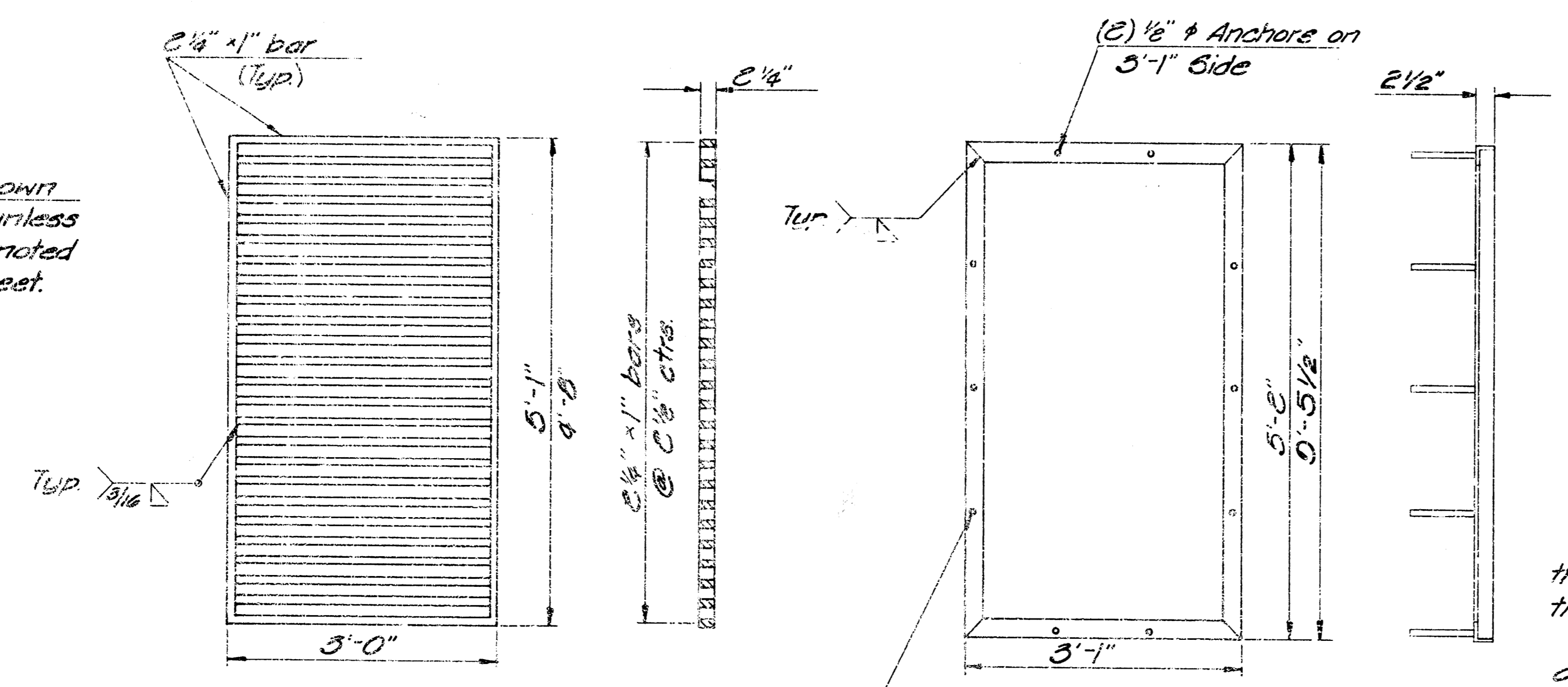


SPECIAL AREA DRAIN LOCATION DIAGRAM
Sta 14+01.00



PLAN

Plan shown is for L=5'-0"
Install two (2) 3'-1" x 4'-8"
Grates where L=10'-0 1/2"



GRATE DETAIL

Wt 620 lbs. (3'-0" x 5'-1") (2 Required)
Wt 536 lbs. (3'-0" x 4'-8") (4 Required)

FRAME DETAIL

Wt 60 lbs. (3'-1" x 5'-0") (2 Required)
Wt 110 lbs. (3'-1" x 5'-5 1/2") (2 Required)

GENERAL NOTES

Six-sack paving mix concrete shall be used throughout. Bevel all exposed edges with a 3/4" triangular moulding or an edging tool. Whenever possible, bend reinforcing bars around pipe opening. Where it is not possible to bend bars around pipe openings bars are to be field cut. No deduction has been made for pipe opening or grate unit depression. When so ordered by the Engineer, the top of the inlet shall be sloped slightly to approximately fit the ground line or other conditions. Unless otherwise noted, all dimensions relative to reinforcement are to centerline of bar. All reinforcing steel shall conform to A.A.S.H.T.O. Specification M-31 Grade 40 or 60. Concrete used for shaping floor of inlet shall be unreinforced 8-sack sand mix. No addition in concrete quantities shall be made for shaping floor of inlets. All structural steel shall conform to ASTM A-36 Structural steel and shall be shop primed with one coat of red lead paint & receive two (2) coats of aluminum paint applied in the field.



CITY OF WICHITA, KANSAS

SPECIAL AREA DRAIN

STORM WATER SEWER NO.204

PROJ. NO. 468-76-245-81040-000-000-001

PROFESSIONAL ENGINEERING CONSULTANTS, P.A.

DESIGNED BY: DD,CSB
DRAWN BY: RB
CHECKED BY: [Blank]
DATE: Nov. 1980