



STA 0+00.00 LINE 3  
18" RCP END SECTION @ 16.7  
S.Y. LIGHT STONE RIPRAP.  
REGRADE 60 LF EXISTING DITCH.  
FL = 195.08

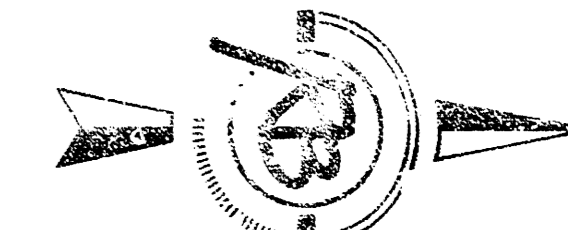
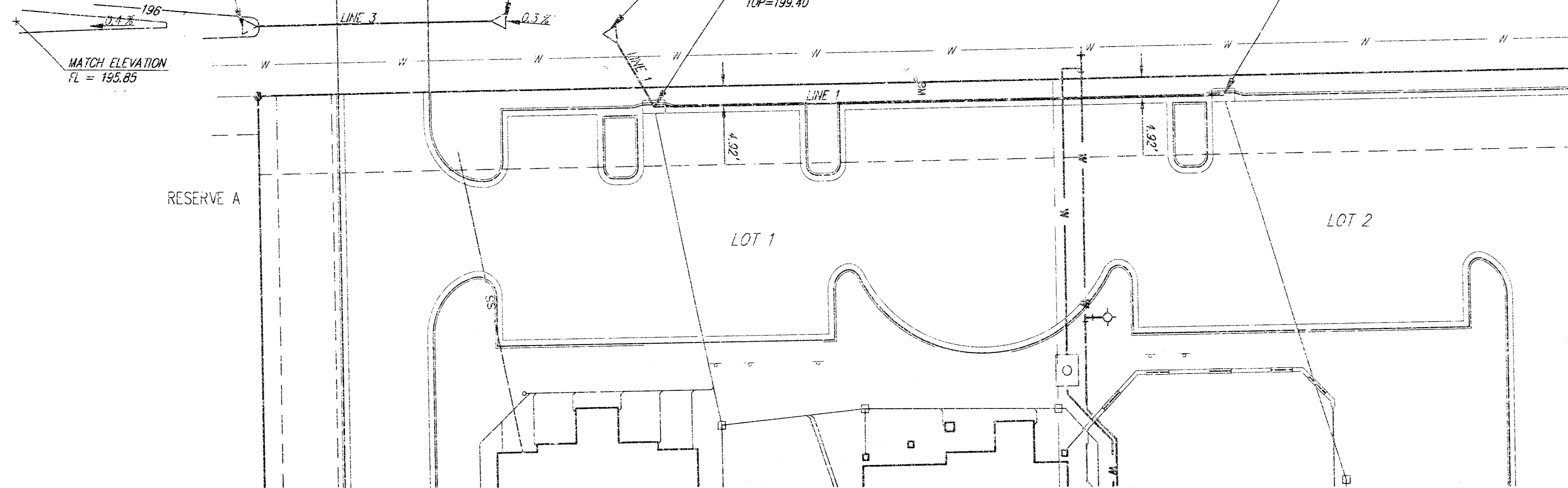
**GREENWICH ROAD**

STA 0+71.32 LINE 3  
18" RCP END SECTION  
REGRADE 28 LF EXISTING DITCH.  
FL = 195.29

STA 0+00.00 LINE 1  
18" RCP END SECTION @ 16.7  
S.Y. LIGHT STONE RIPRAP  
FL = 195.37

STA 0+22.95 LINE 1  
CONSTRUCT STD. TYPE II  
CURB INLET  
TOP = 199.40

STA 1+75.95 LINE 1  
CONSTRUCT STD. TYPE II  
CURB INLET  
TOP = 199.45



SCALE 1" = 20'

NOTE: CONTRACTOR TO VERIFY  
LOCATION AND DEPTH OF ALL UTILITIES  
PRIOR TO CONSTRUCTION.

BENCH MARK: RR SPIKE E. FACE 360' N. OF  
PINE MEADOWS ST. E. SIDE OF GREENWICH  
ELEV. = 198.32

SCALE  
HORZ. 1" = 20"  
VERT. 1" = 5'

**LINE 1**

STA 0+00.00 LINE 1  
18" RCP END SECTION  
FL = 194.45

STA 0+22.95 LINE 1  
CONSTRUCT STD. TYPE II  
CURB INLET  
TOP = 199.40

STA 1+75.95 LINE 1  
CONSTRUCT STD. TYPE II  
CURB INLET  
TOP = 199.45

200  
195  
190  
185  
180

22.95 LF 18" RCP @ 0.78%

153.00 LF 15" RCP @ 0.44%

FL(S) = 195.37

FL(S) = 195.59  
FL(S) = 196.65

FL(S) = 196.19

1+00

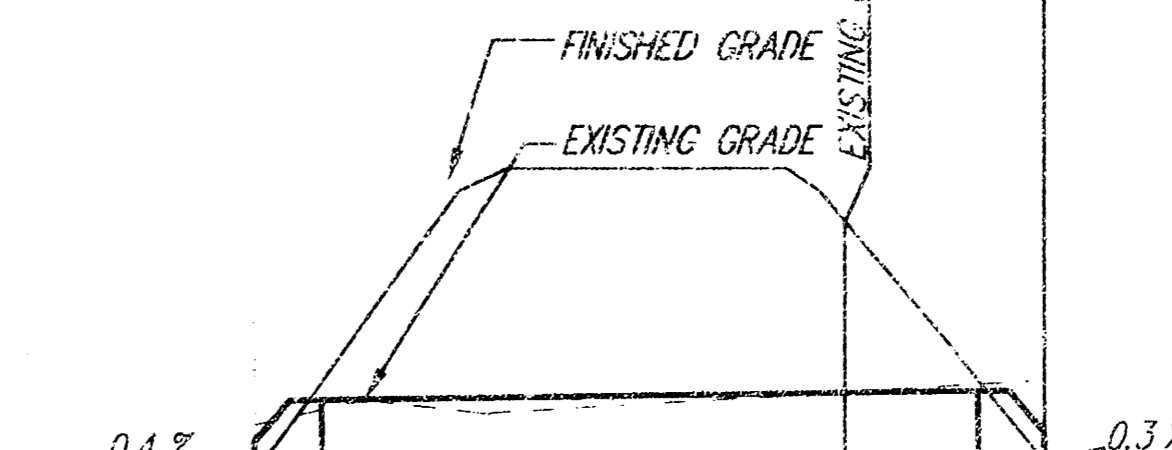
2+00

+75.14

**LINE 3**

STA 0+00.00 LINE 3  
18" RCP END SECTION

STA 0+71.32 LINE 3  
18" RCP END SECTION



71.32 LF 18" RCP @ 0.30%

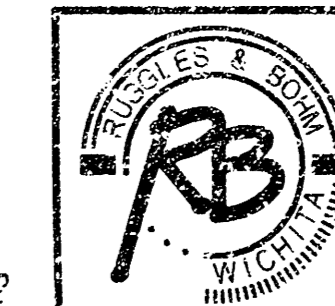
FL(S) = 195.08

FL(S) = 196.29

+71.32

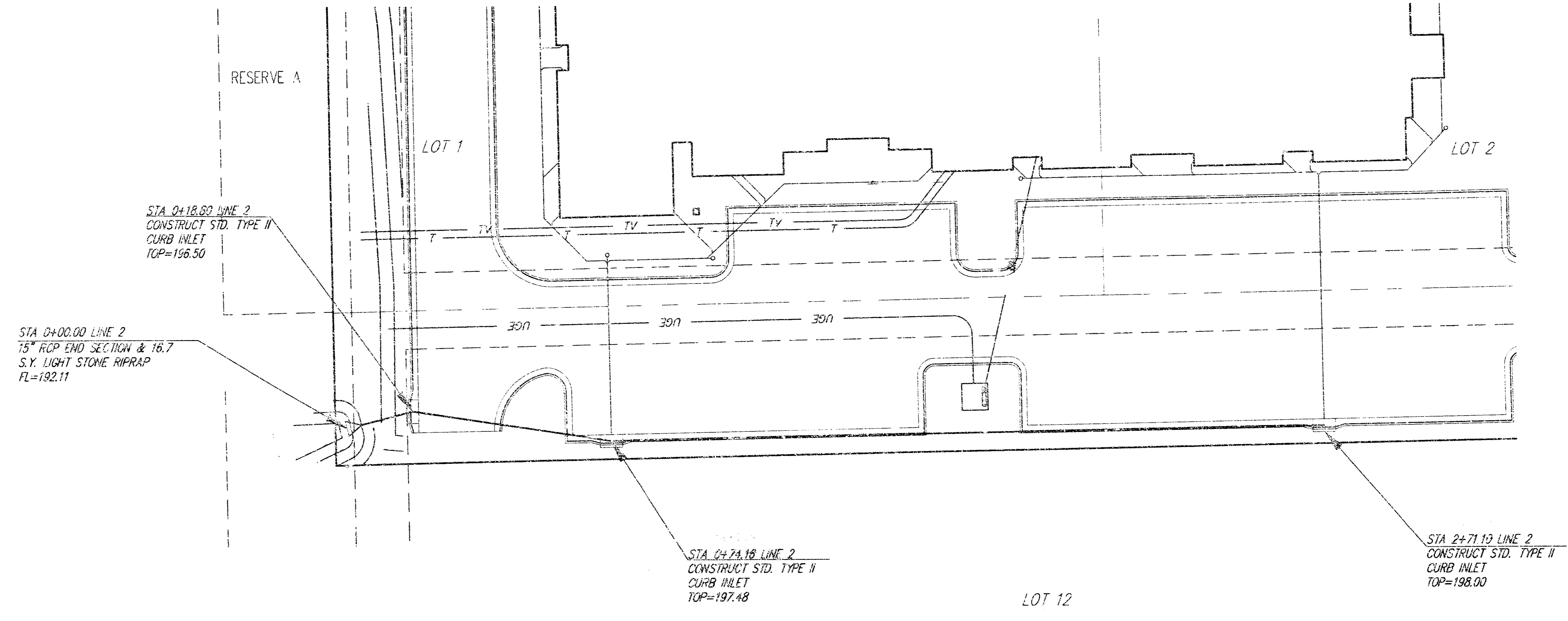
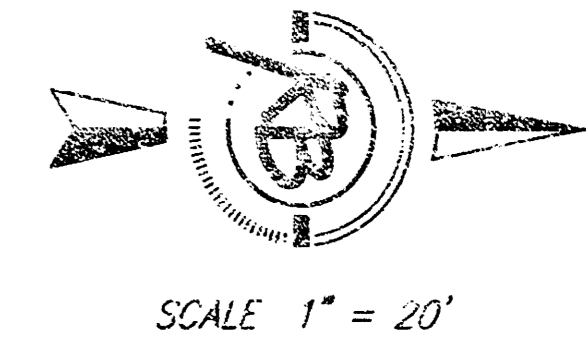
200  
195  
190  
185  
180

RESIDENCE INN  
Storm Sewer Profile  
SEDCWICK COUNTY, KANSAS



**Ruggles & Bohm, P.A.**  
Engineering, Surveying, Land Planning  
924 North Main  
Wichita, Kansas 67203  
www.rtkansas.com  
(316) 264-8008  
(316) 264-4621 fax  
E-mail: info@rtkansas.com

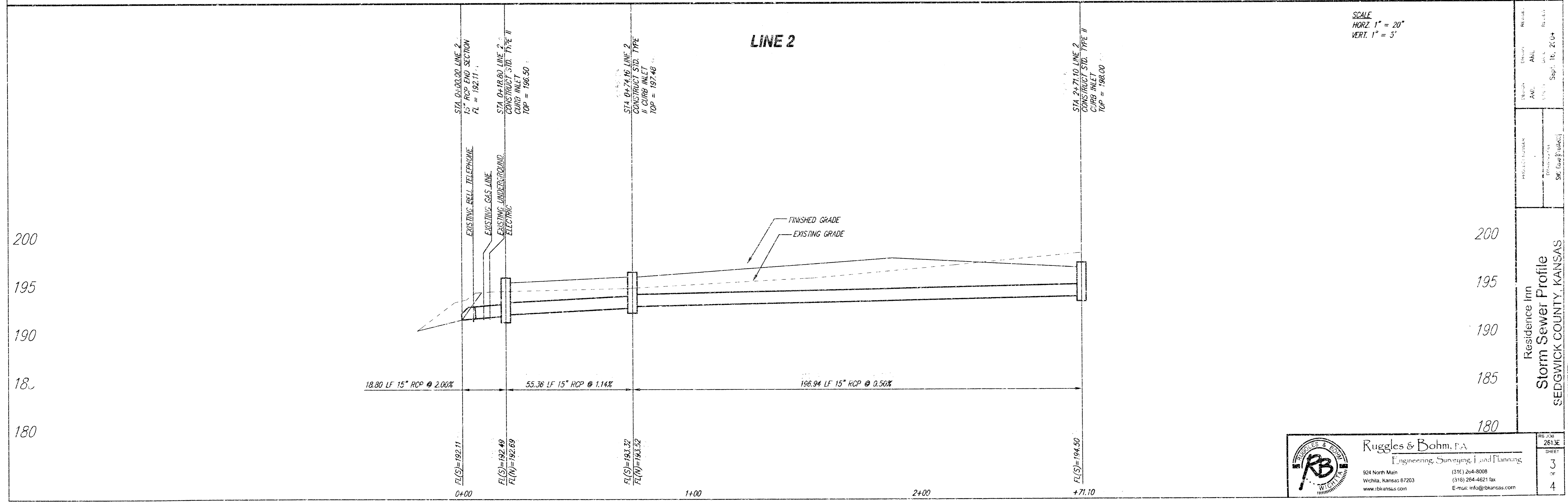
NO. FOR SHEET  
26.3E  
2  
4



NOTE: CONTRACTOR TO VERIFY LOCATION AND DEPTH OF ALL UTILITIES PRIOR TO CONSTRUCTION.

BENCH MARK: RR SPIKE E. FACE 360" H. 0" PINE MEADOWS ST. E. SIDE OF GREENWICH ELEV=198.32

SCALE  
HORZ. 1" = 20"  
VERT. 1" = 5"

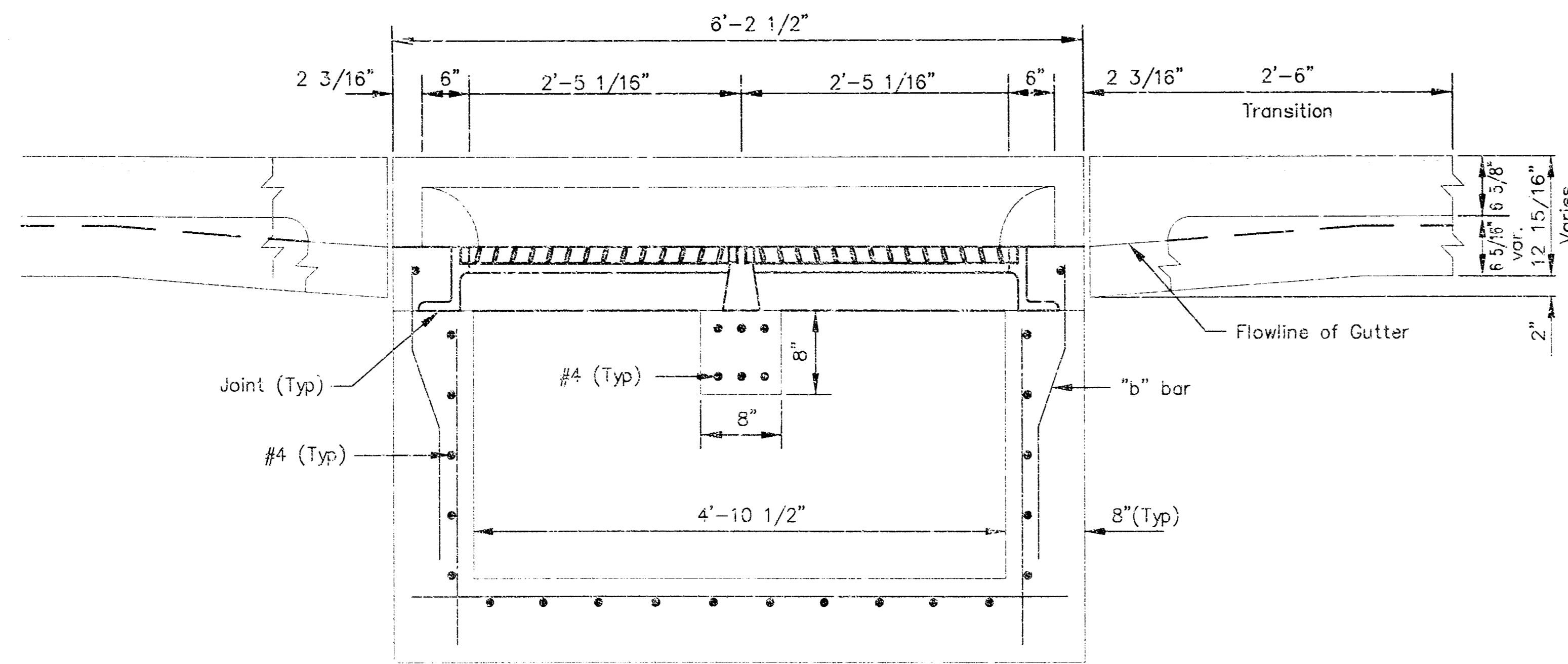


PROJECT NUMBER	2613E
DATE	8/3
SHEET	4
Residence Inn Storm Sewer Profile SEDGWICK COUNTY, KANSAS	

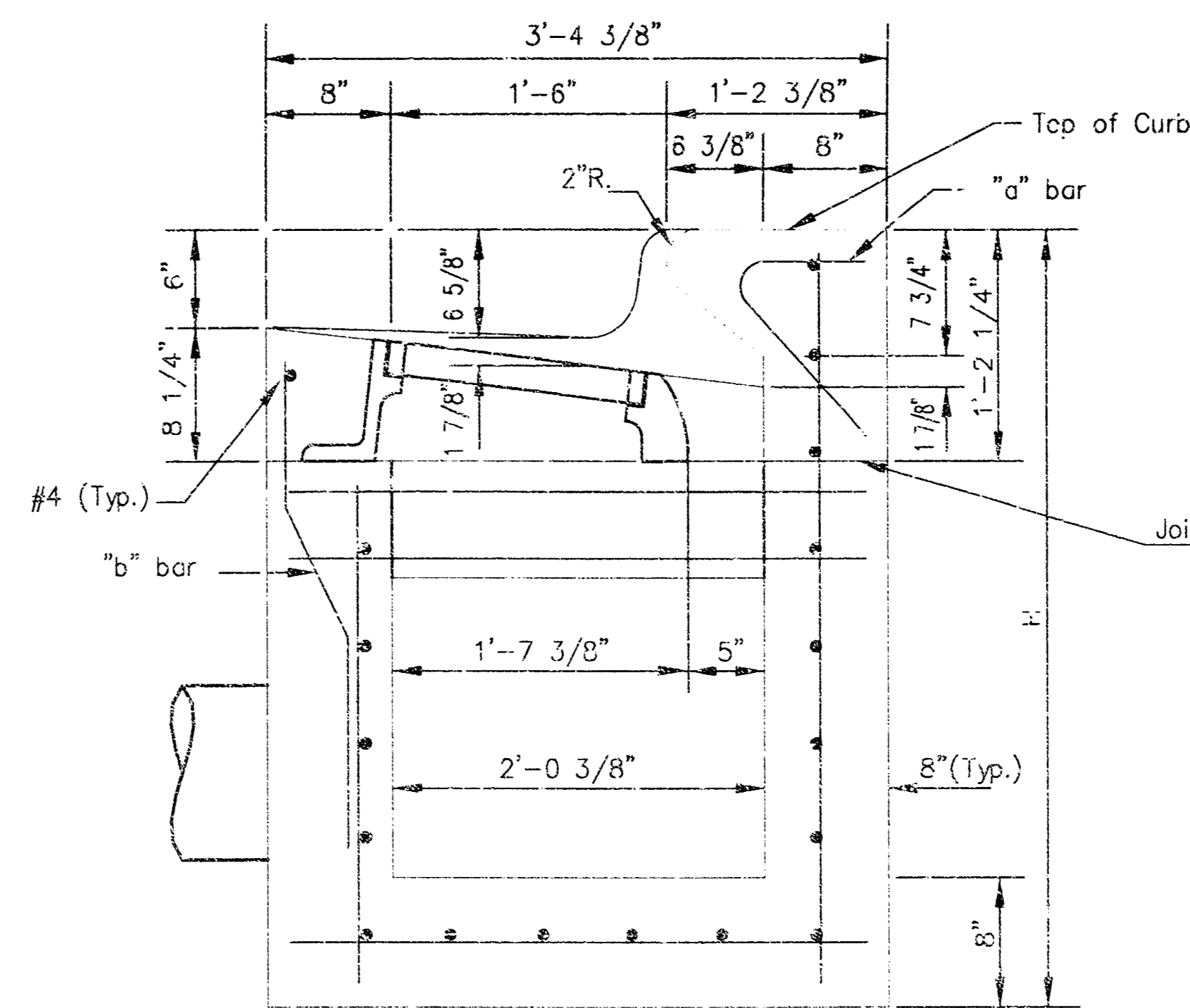
**Ruggles & Bohm, P.A.**  
Engineering, Surveying, Land Planning

924 North Main  
Wichita, Kansas 67203  
www.rbkansas.com

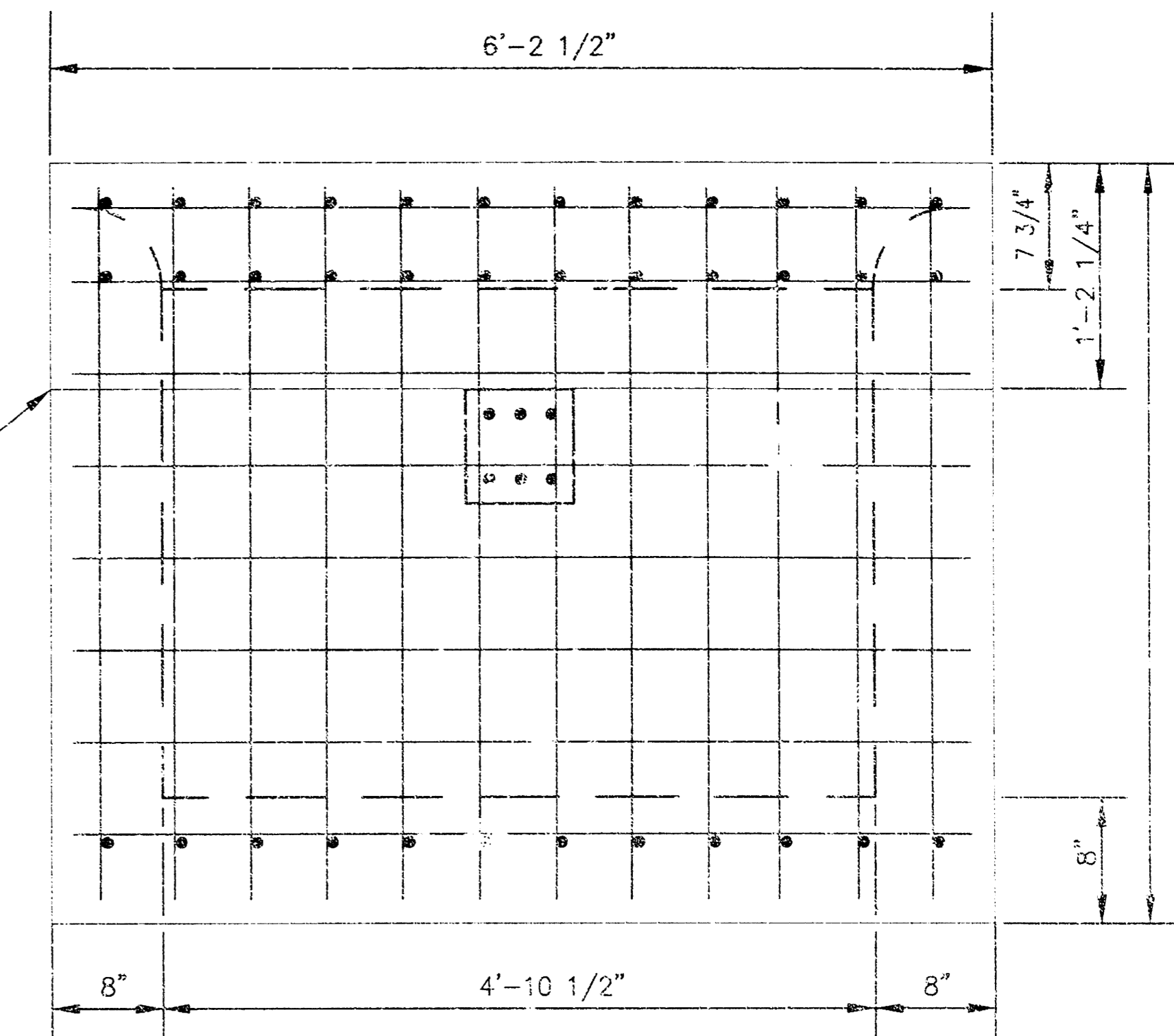
(316) 264-8008  
(316) 264-4621 fax  
E-mail: info@rbkansas.com



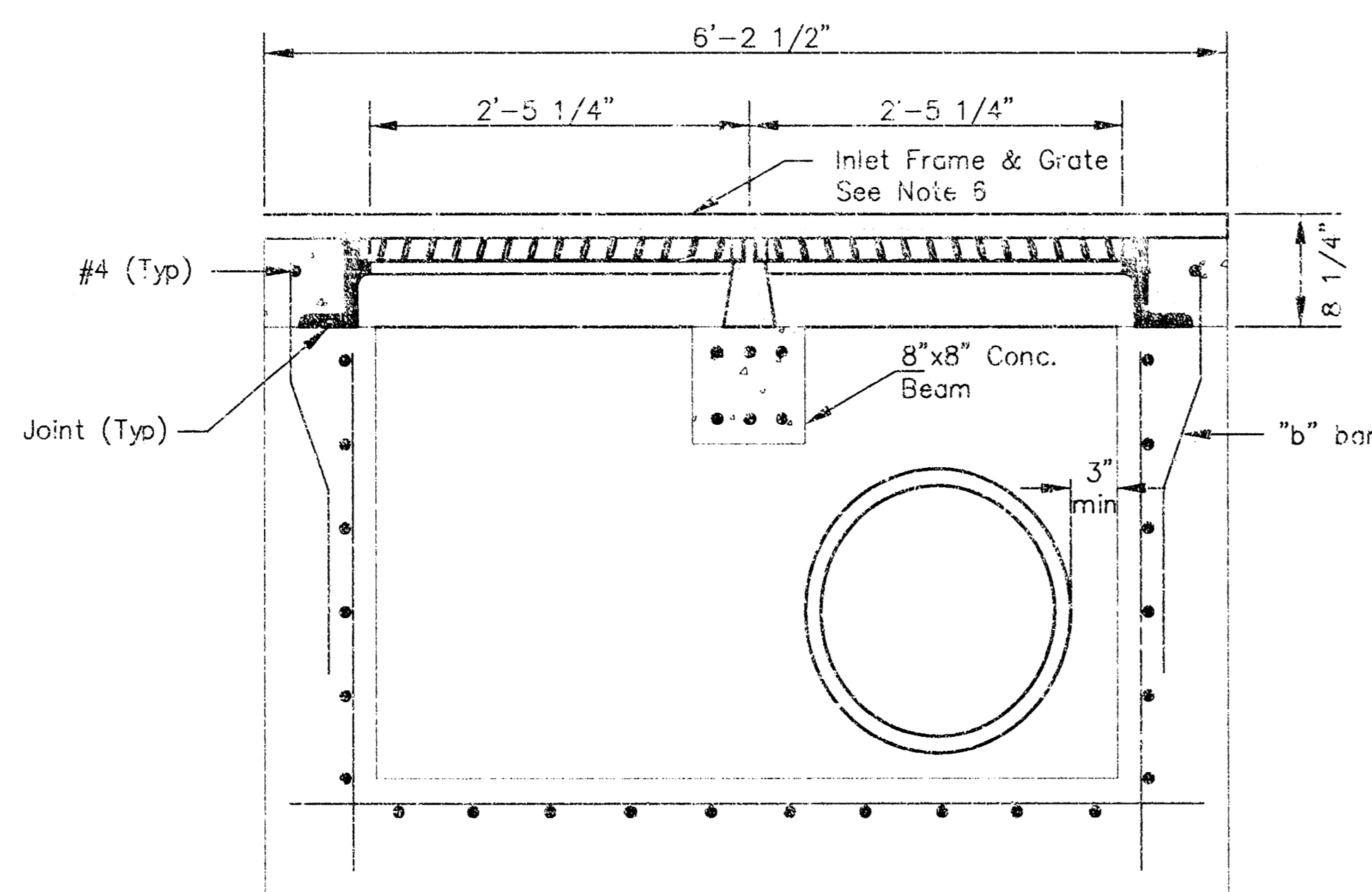
SECTION C-C



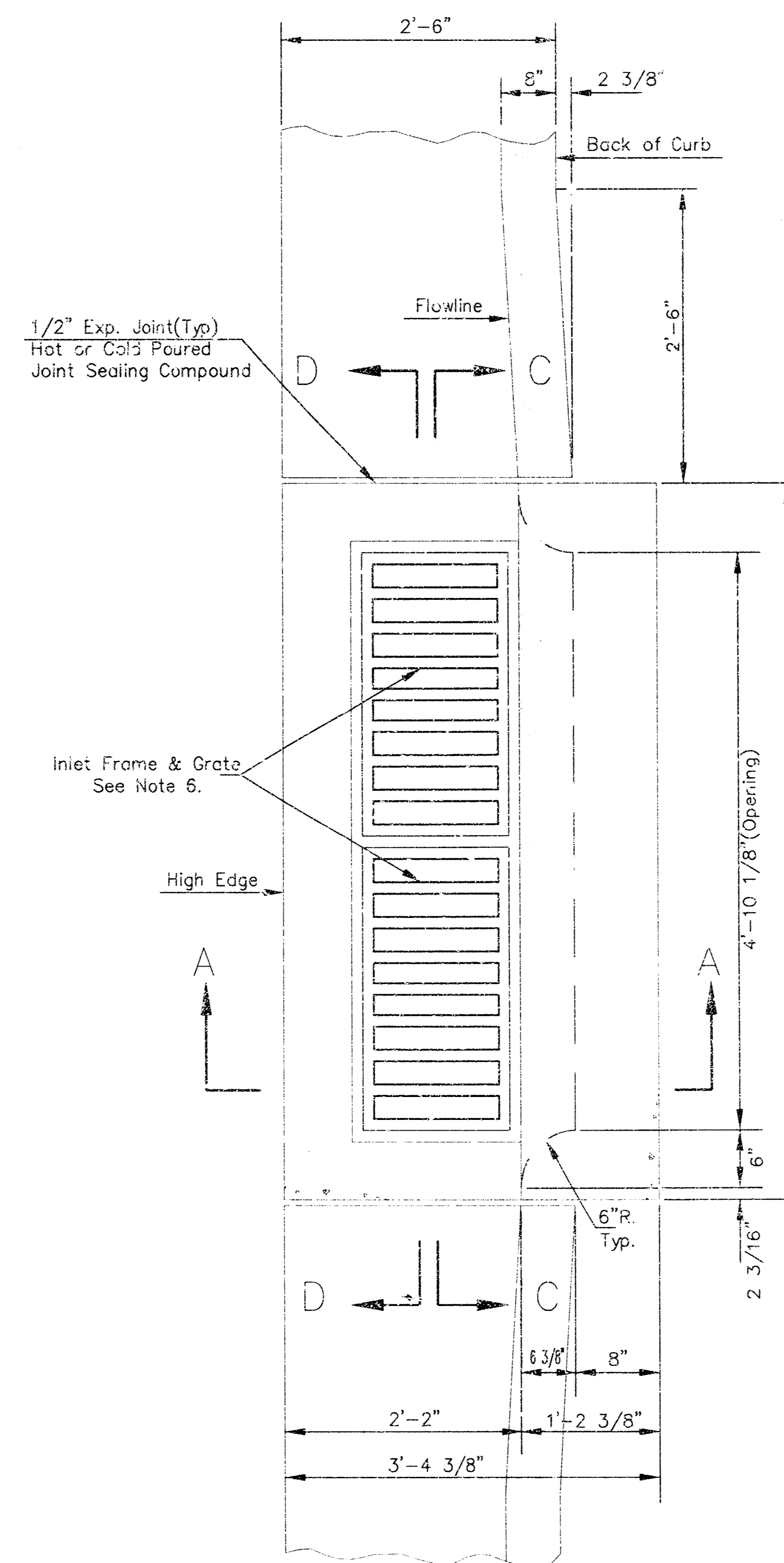
SECTION A-A



REAR WALL

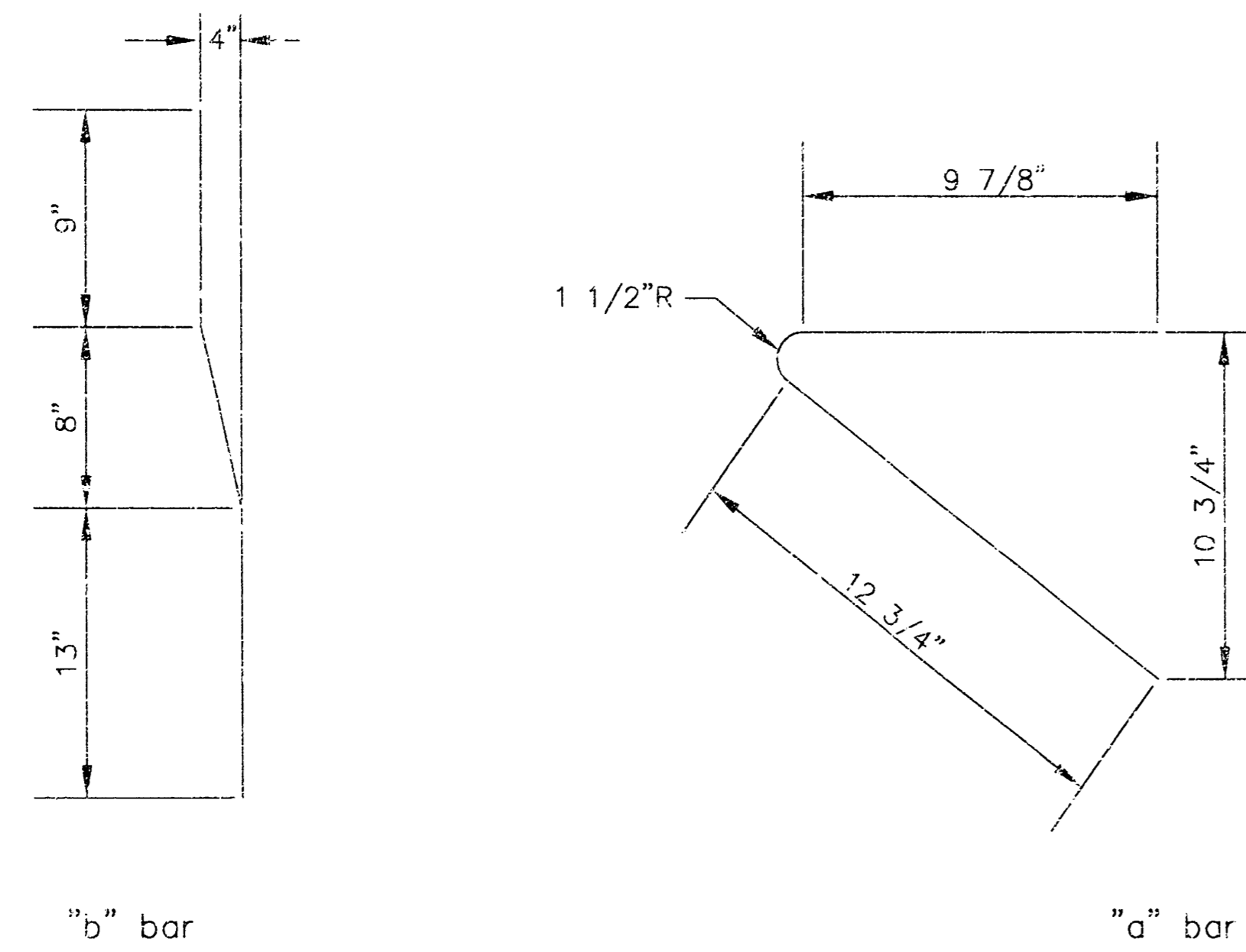


SECTION D-D



GENERAL NOTES

1. Use the concrete mix specified for the City of Wichita concrete pavement throughout. All exposed edges shall be finished with an edging tool. Reinforcing bars shall be bent around pipe.
2. Inlet invert shall be shaped with 8 sack mix concrete to create flow channels and to increase hydraulic efficiency such that the inlet will be self cleaning between all inlet and/or outlet pipes.
3. All bars are #4 with 6" spacing and shall have a minimum clearance of 1 1/2 inches unless otherwise noted on the plans.
4. When directed by the Engineer, a small opening may be required in the back of the inlet in order to drain a low area. Reinforcing bars will extend through the openings. No deductions in concrete quantities will be made for these openings.
5. No deductions will be made in pay length of curb, gutter, or curb and gutter through the inlet area.
6. Use Neenah R-3288 HV inlet Frame with Two Piece Grate or approved equal. Inlet frame to be proof load tested to 40,000 lbs. on unsupported side.
7. Reinforcing bars shall be cut or bent around pipes. No deduction in concrete quantities shall be made for pipe openings.
8. The vanes of the grate shall be oriented with respect to the flow arrows shown on the plans.
9. DEETER FOUNDARY, Inc. casting No. 2442/43 with style H grate is an approved equal to NEENAH castings specified. Inlet drawing is based on NEENAH castings and concrete walls and supports will require some field modification to accommodate DEETER castings.



BENDING DIAGRAM

<p>THE CITY OF WICHITA</p>	<p><b>STANDARD TYPE II INLET</b>  <b>OPENING = 6"x4'-10 1/8"</b></p>	
	<p>PROJECT NUMBER</p>	<p>OCA #</p>
<p>CITY ENGINEER'S OFFICE          CITY HALL - SEVENTH FLOOR          455 NORTH MAIN STREET          WICHITA, KANSAS 67202          (316) 268-4501          (316) 268-4114 FAX</p>	<p>DATE          MAR 96</p>	<p>SHEET 4 OF 4</p>