

STORM WATER SEWER TO SERVE
to serve

Reynolds Addition

Part of Lot 1 & 2

Private Project Number: 1477 PPS (607861)

CITY OF WICHITA, KANSAS

James L. Armour, P.E. Acting City Engineer

September 2004

Bench Marks

RR Spike in Light Pole 6' West
and 37' South of NW Corner of
Property.

Elev= 177.77 (City Datum)

Legal Description

That Part of Lot 1, Block A, Reynolds Addition to
Wichita, Sedgwick County, Kansas, EXCEPT The north
298 feet thereof; together with that Part of Lot 2,
Block A, Reynolds Addition to Wichita, Sedgwick
County, Kansas, EXCEPT the north 298 feet thereof.

Sheet Index

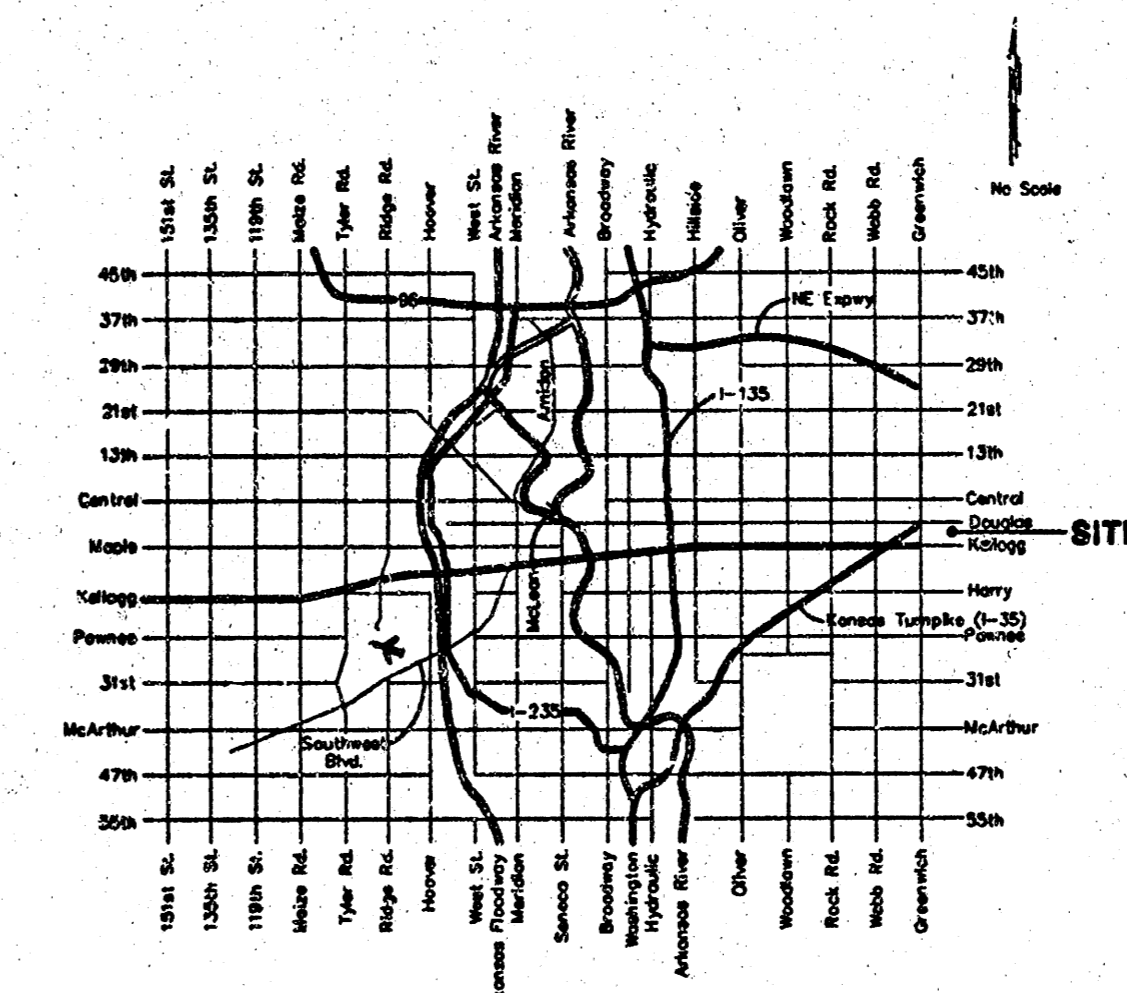
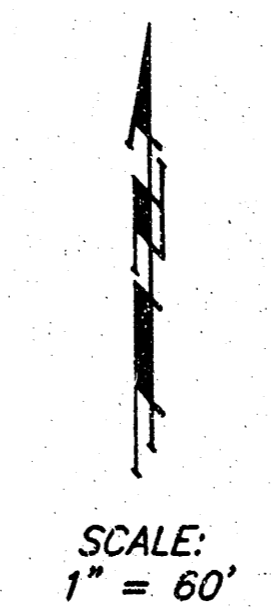
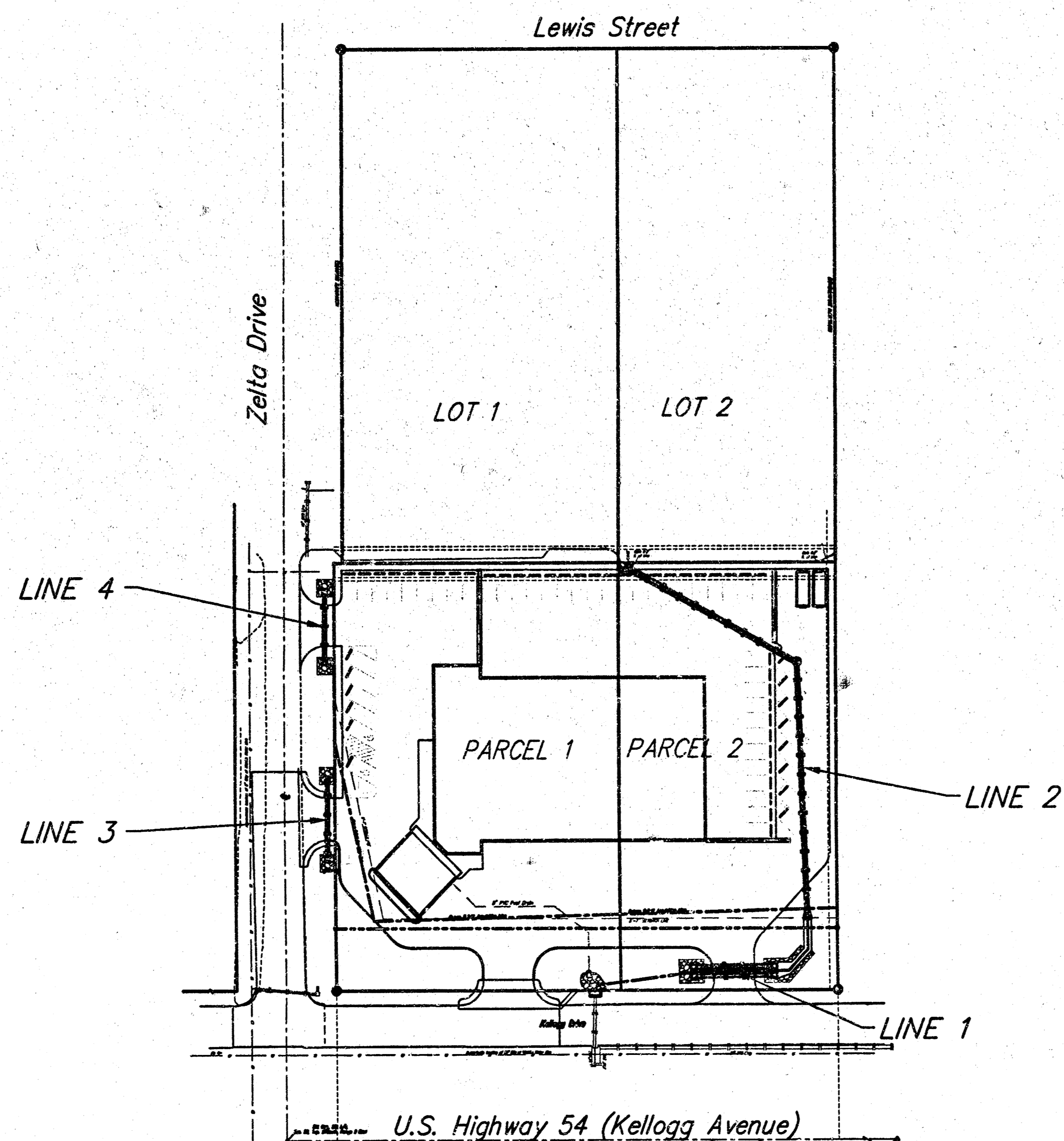
Title Sheet	5
Line 1 & Line 2	6
Line 3 & Line 4	7
Special Yard Inlet Detail	8

APPROVED AS NOTED
BY CITY ENGINEER OF WICHITA

Storm Sewers URH 9/8/04

NOTE TO CONTRACTORS

Installation, inspection and testing for this project is to be provided by a Licensed Consulting Engineering Firm under contract with the Owner/Developer. Said inspection to be in accordance with the City of Wichita standard construction engineering practices and certified by a Licensed Professional Engineer. No work shall be performed in dedicated easements or public right-of-way by the Contractor without such inspection nor shall any work be commenced without written authorization by the City Engineer. All Construction and Materials shall comply with the City of Wichita Specifications and Standards (on file and available in the City Engineer's Office).



Location Map

Contractor Shall Follow All Applicable
Best Management Practices (BMP)
For Erosion Control.

AS BUILT
11/11/04
City Engineer

General Notes

- Contractor will be required to provide notice to utility companies a minimum of twenty-four (24) hours prior to any excavation, as follows:

Kansas One-Call	687-2470
Cox Communications	262-4270
Kansas Gas Service	1-888-482-4950
Westar Energy	383-8650
Aquila Energy	1-800-363-0357
SBC	268-2245
City of Wichita Water Dept.	268-4563
City of Wichita Sewer Maint.	268-4024
City of Wichita Storm Sewer Maint.	268-4090
City of Wichita Traffic Maint.	268-4034
Conoco Pipeline Co.	1-800-231-2551
Southern Star Pipeline Co.	529-6600
Phillips Pipeline Co.	1-800-766-8230

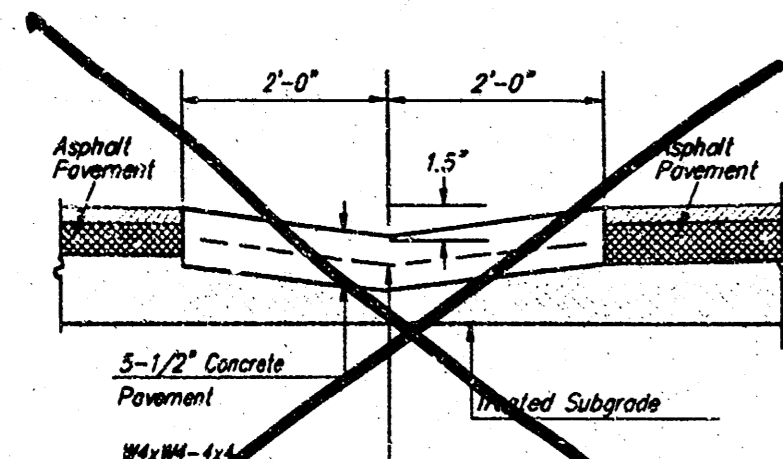
The Contractor must notify the following in case of an emergency:
- Utility service lines, poles, wire boxes, meters, and etcetera are to be adjusted as necessary by others prior to construction unless the plans specifically call for their adjustment by the Contractor or unless the plans specifically identify a utility to be adjusted by its owner during construction. Existing utilities and their location, as shown on the plans, represent the best information obtainable for design. The Contractor will be required to work around existing utilities within the right-of-way which do not conflict with proposed construction.
- Contractor shall not start work on the project until the project inspector is assigned to the project and is present on the site. Contractor shall not start on the project until all necessary bonds and permits have been obtained. Bonds may include but are not limited to Statutory, Performance & Maintenance for areas in public right-of-way and easement. For projects within the City of Wichita contact Tom Mason (268-4574). Any work done without inspection will be required to be uncovered for inspection.
- Rubble from the removal of miscellaneous structures and excess excavation which is to be wasted shall be disposed of on sites to be provided by the Contractor. These sites shall be approved by the Engineer as to suitability, appearance and site location. Locations, in the opinion of the Engineer, that will leave an unsightly appearance will not be approved. All disposal sites must be approved by the Kansas Department of Health and Environment. Material either stockpiled or disposed of in a flood plain would require a Kansas State Board of Agriculture permit. Any material dumped in waters of the United States or wetlands is subject to U.S. Corps. of Engineers permitting regulations. Any material buried or stockpiled beyond approved construction limits would require additional archeological investigations unless buried in a previously approved borrow location.
- Trees and shrubs in public right-of-way which are in direct conflict with proposed new construction shall be removed by the Contractor with the Engineer's approval. Trees and shrubs which are not in direct conflict with proposed new construction shall be saved and protected from damage.
- The Contractor shall give all property owners and/or tenants of developed property abutting the construction of this project a minimum of ten (10) days advance notice prior to start of construction.
- The Contractor shall be responsible for preserving property irons. The Contractor will be required to re-establish any property irons which are damaged or destroyed by his construction operations. Such irons shall be re-established by a licensed land surveyor in accordance with state laws.
- All R/W areas disturbed by construction operations (not under future pavement) shall be seeded with K-31 Fescue at a rate of 8 lbs. per 1000 sq. feet or as per city specs. All other areas to be seeded/sodded as noted on the plan sheet. Contractor to prepare ground to city specifications.
- All storm sewers shall be installed in accordance with the most recent edition of City of Wichita, Kansas Standard Specifications for the Construction of City Projects.

BENCHMARK #1
Small Railroad Spike on the South Side of Power Pole
Approx. 58' South of the C.L. 37th St. N. and 418'
East of the C.L. Ridge Rd.

Elevation = 146.23 (City Datum)

BENCHMARK #2
Cut in Top of South Headwall in 37th St. N.
RZN 75' West of the C.L. of Ridge Road.

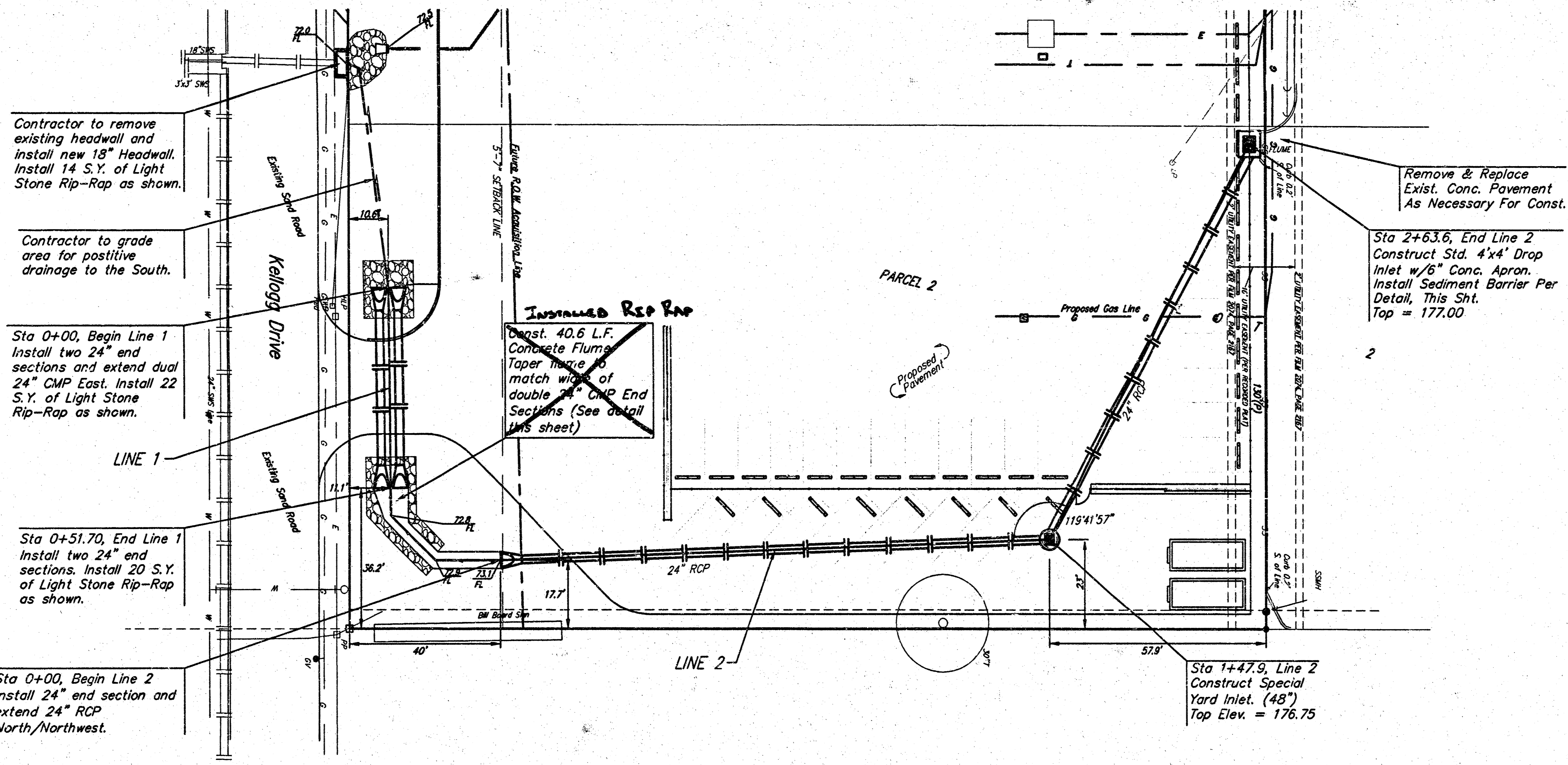
Elevation = 144.12 (City Datum)



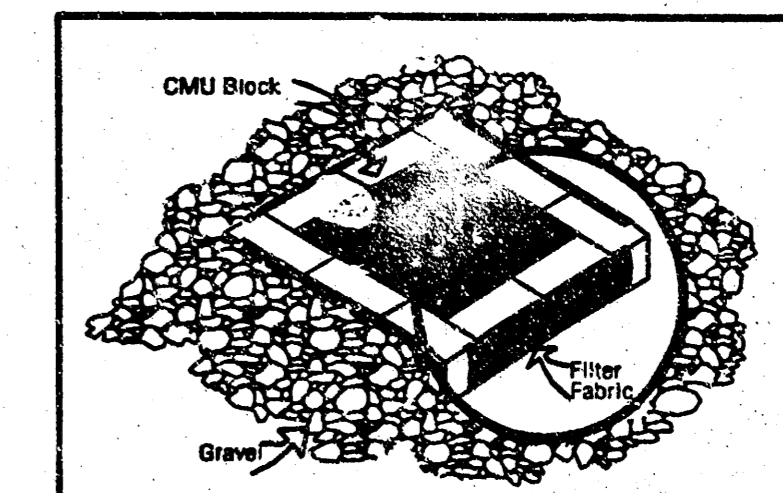
CONCRETE FLUME DETAIL
NOT TO SCALE

Contractor Shall Follow All
Applicable Best Management Practices (BMP)
For Erosion Control.

Contractor To Use Extreme Caution
When Excavating Near Utility Lines.
Contractor To Hand Dig To Expose All
Utility Lines Prior To Water Line Installation.
Verify Depth To Determine Conflict If Any.

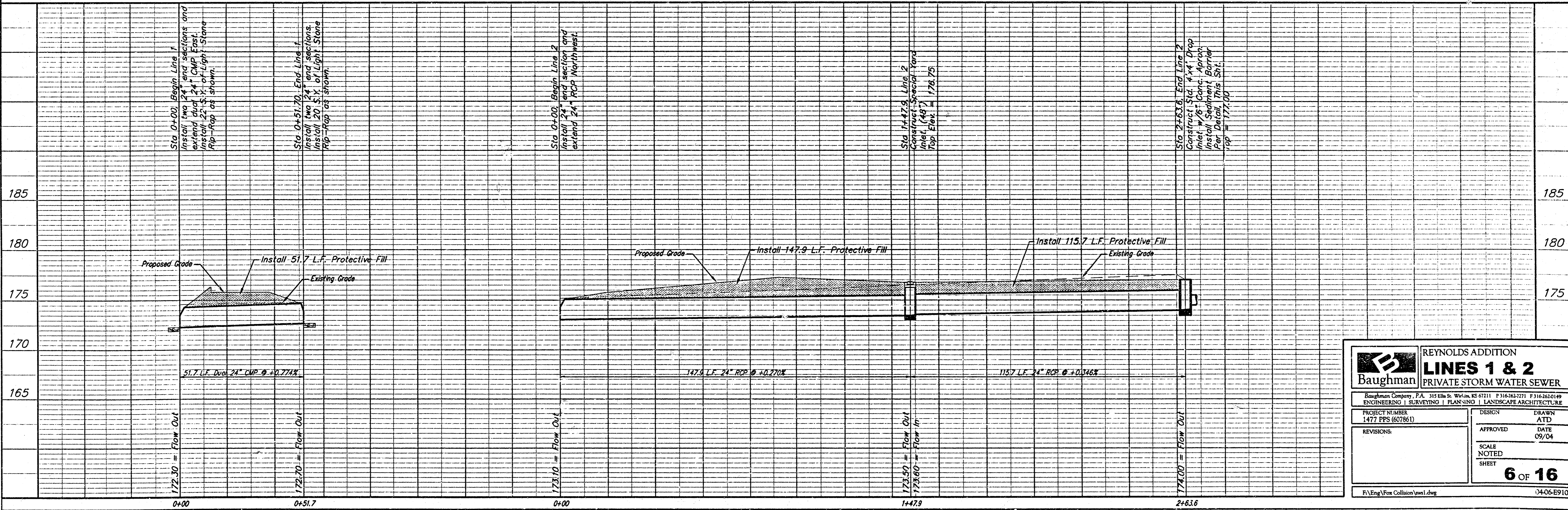


Scale:
1" = 20' Horizontal
1" = 5' Vertical
• = Iron



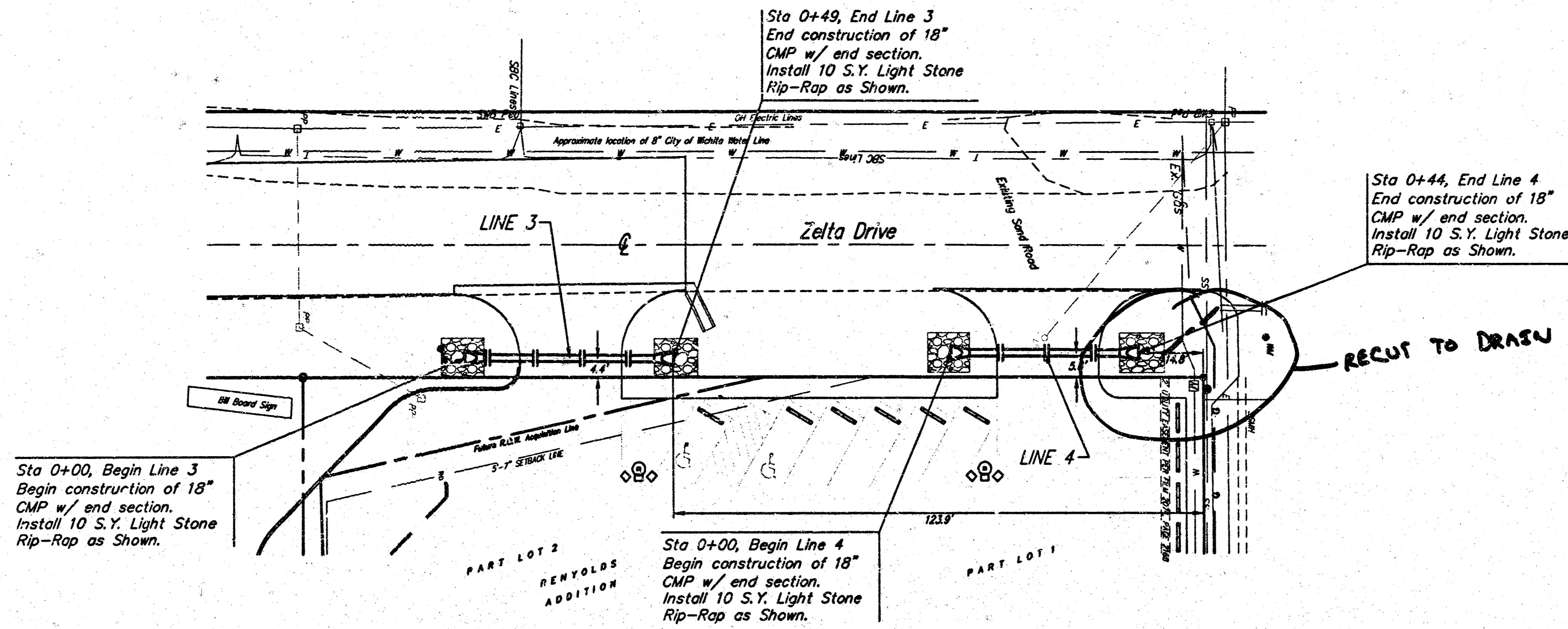
NOTES:
Frequent maintenance is required to minimize short-circuiting and to remove sediment deposits and buildup.
Wrap filter fabric around all CMU block and backfill with 2"-3" gravel rock to allow sediment deposits.
DO NOT cover inlet or grate with filter fabric.

INLET PROTECTION
Storm Drain with Gravel Apron



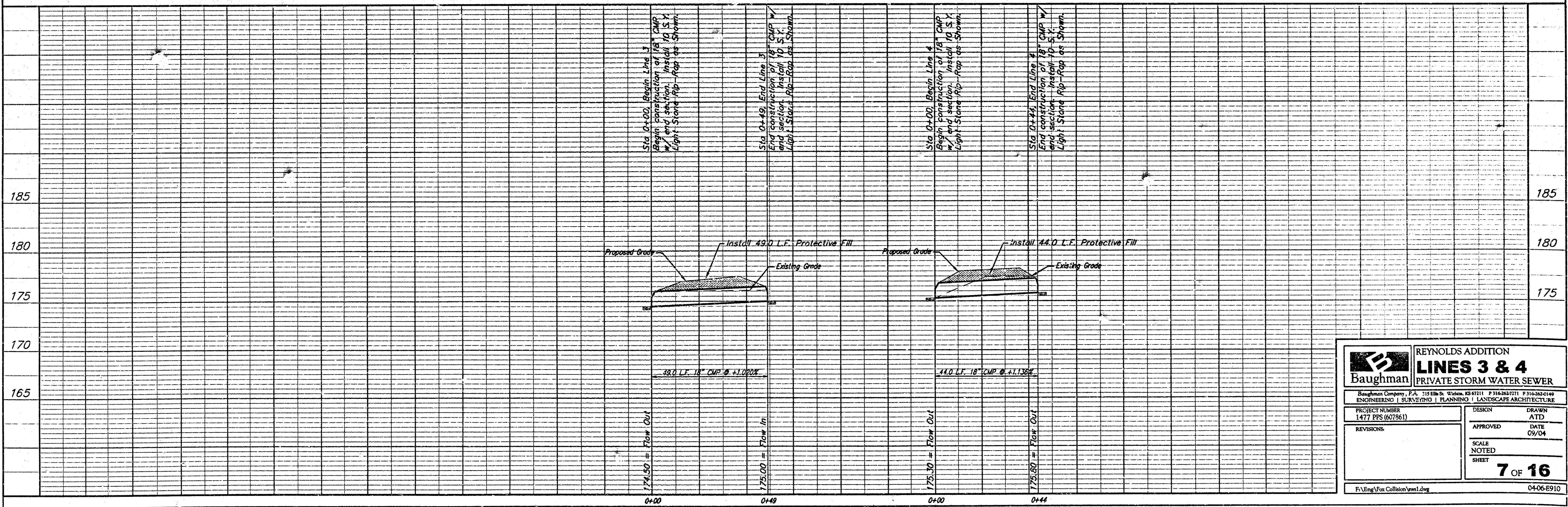
		REYNOLDS ADDITION	
		LINES 1 & 2	
PRIVATE STORM WATER SEWER		Baughman Company, P.A. 315 6th St. W. Minn. NE 67111 F 16363-2711 F 316363049 ENGINEERING SURVEYING PLANNING LANDSCAPE ARCHITECTURE	
PROJECT NUMBER 1477 PPS (607861)	DESIGN ATD	DRAWN ATD	DATE 09/04
REVISIONS:	APPROVED	SCALE NOTED	SHEET
		6 OF 16	
F:\Eng\For Collision\ans1.dwg		0406E910	

Scale:
 1" = 20' Horizontal
 1" = 5' Vertical
 • = Iron

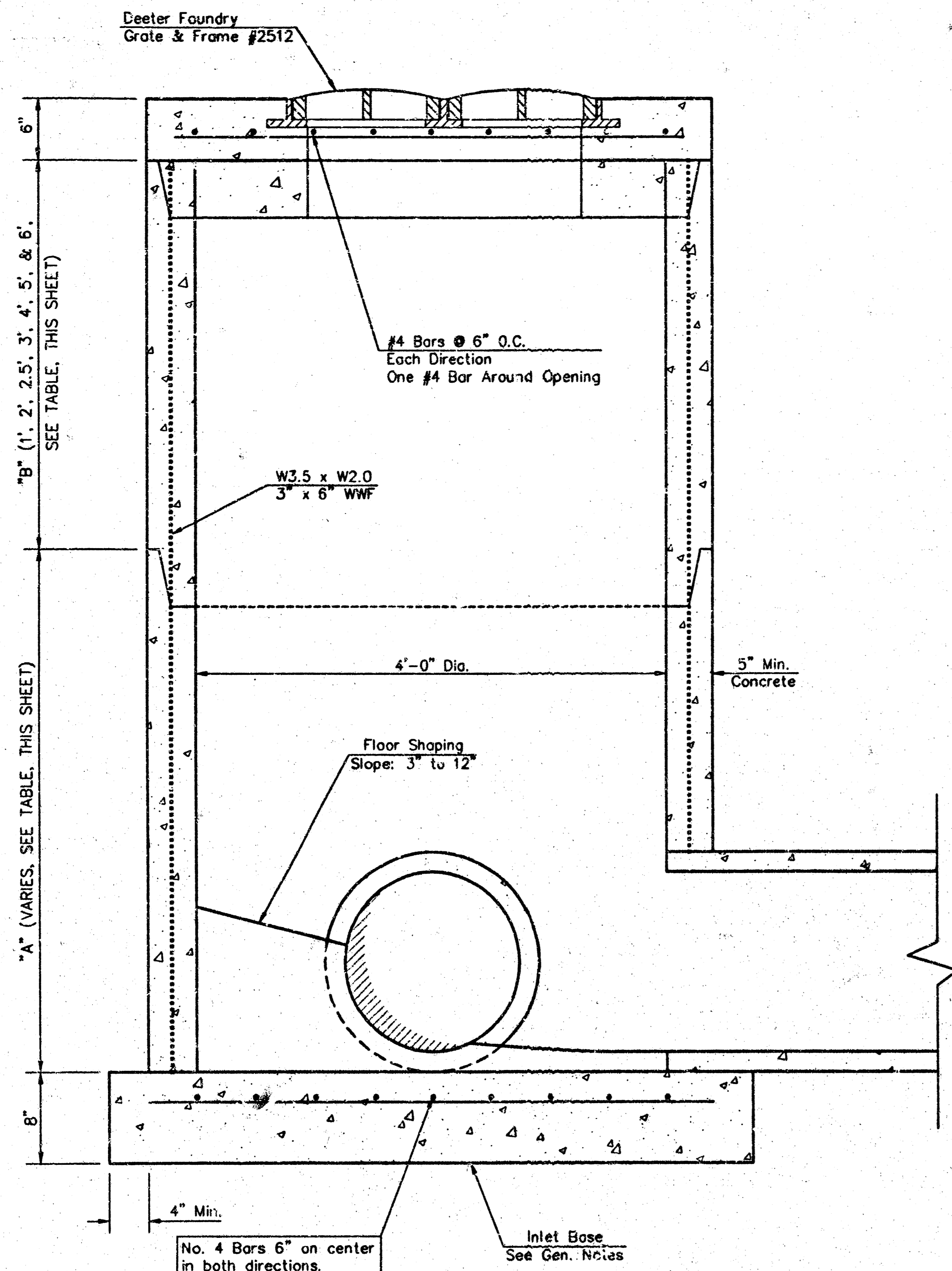


Contractor Shall Follow All Applicable Best Management Practices (BMP) For Erosion Control.

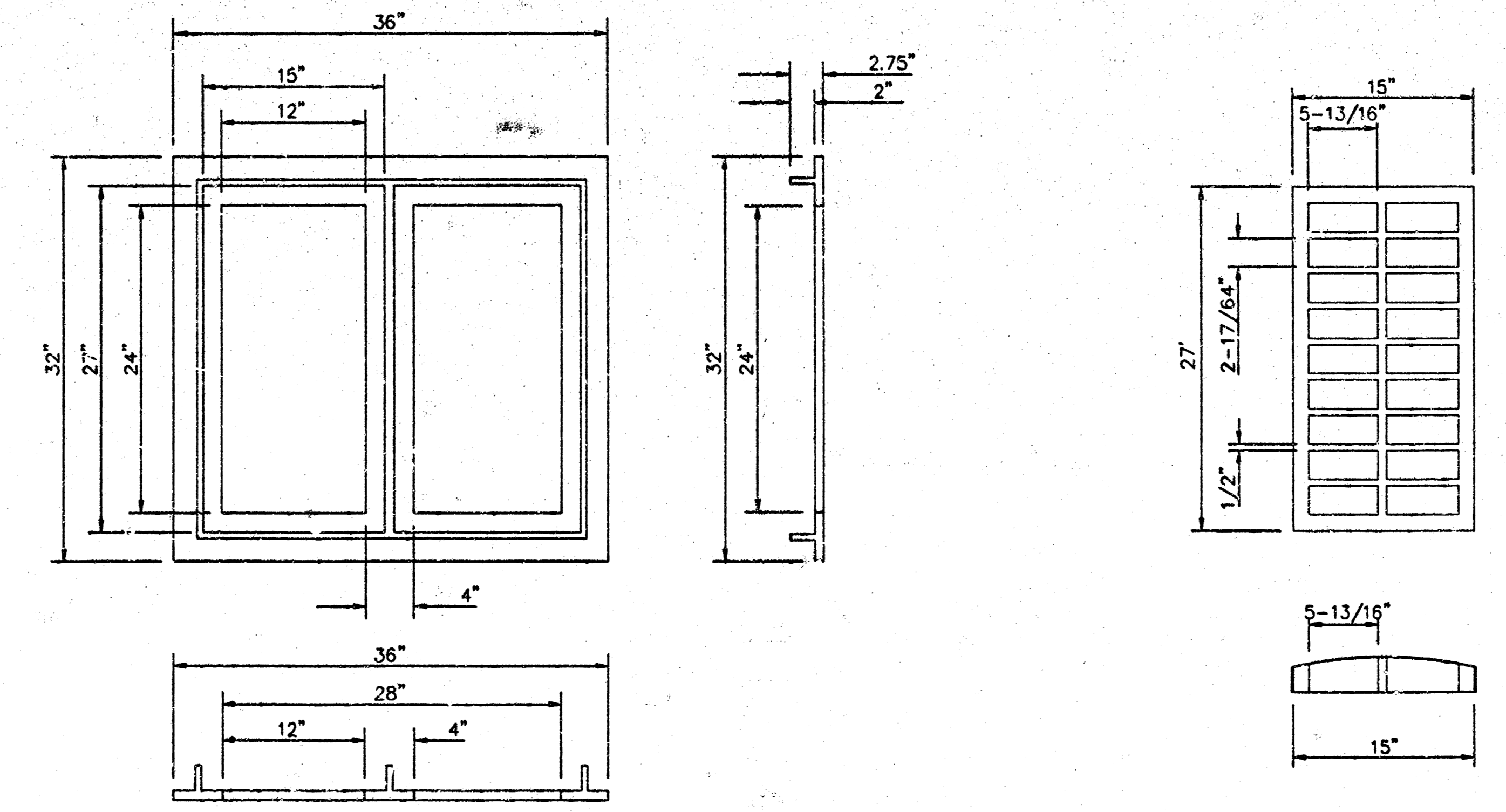
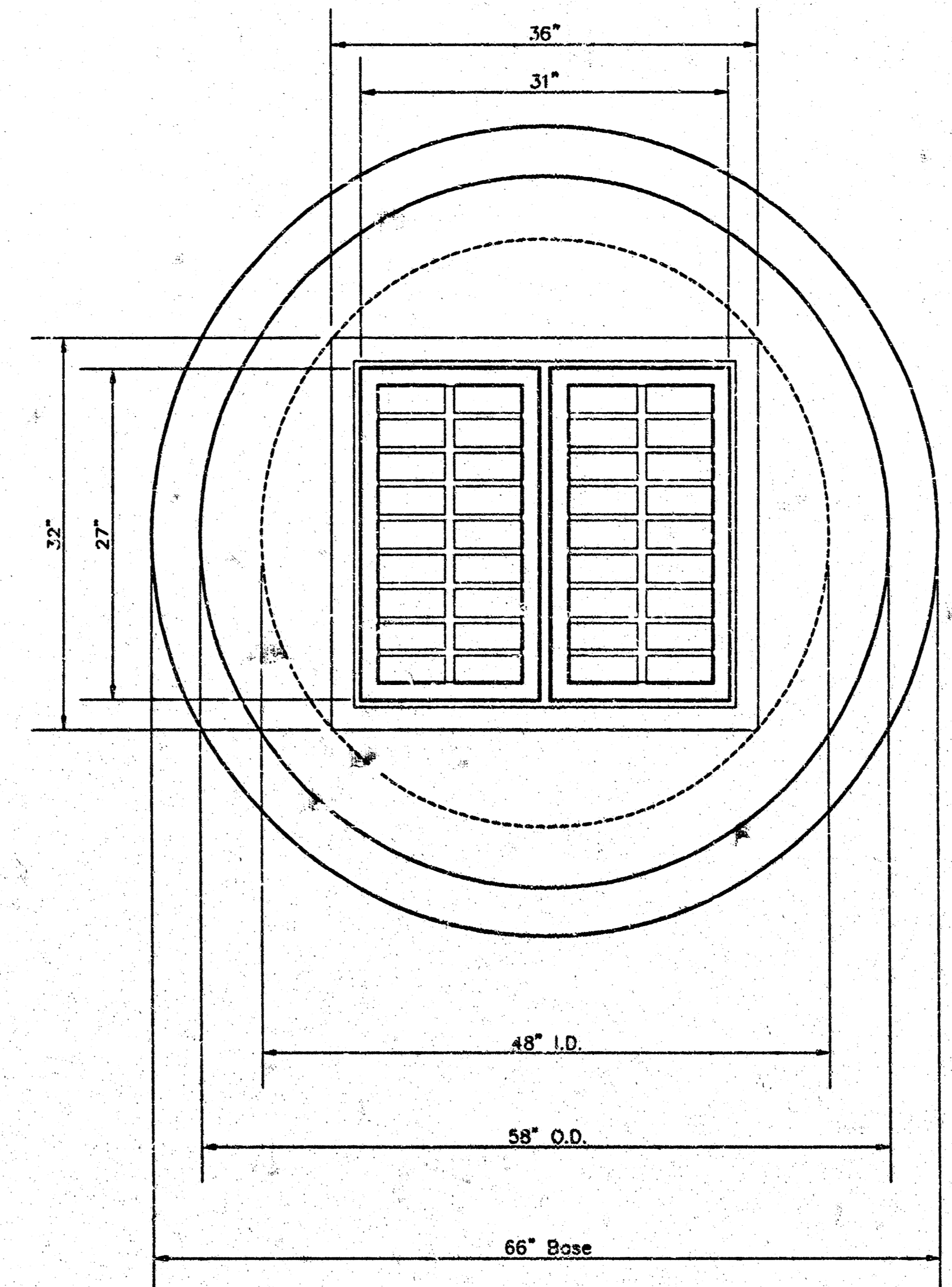
Contractor To Use Extreme Caution When Excavating Near Utility Lines. Contractor To Hand Dig To Expose All Utility Lines Prior To Water Line Installation. Verify Depth To Determine Conflict If Any.



Baughman		REYNOLDS ADDITION LINES 3 & 4 PRIVATE STORM WATER SEWER	
<small>Baughman Company, P.C., 21518 N. State, #2111 Phoenix, AZ 85024-1111 ENGINEERING SURVEYING PLANNING LANDSCAPE ARCHITECTURE</small>			
PROJECT NUMBER 1477 PPS (607861)	DESIGN ATD	DRAWN ATD	DATE 09/04
REVISIONS:	APPROVED	SCALE NOTED	SHEET 7 OF 16
<small>F:\Eng\Fox Collision\area1.dwg</small>		<small>04-06-910</small>	



YARD INLET



DEETER #2512 CATCH BASIN INLET GRATE & FRAME

GENERAL NOTES

- Mortar used in masonry construction shall contain 3 sacks of cement per cubic yard. Concrete used in yard inlet bases shall conform to the requirements of concrete for concrete pavement construction as specified in the city standard paving specifications using city concrete cement mix without air entraining.
- Reinforcing steel shall be installed in the yard inlet bases and shall consist of no. 4 bars placed on 6" centers in both directions. The yard inlet base reinforcement shall be placed 6" above the bottom of the yard inlet base. All costs for furnishing and installing reinforcing steel shall be included in the unit price bid for the yard inlet.
- The floors of all yard inlet shall be shaped with flow channels such that the inlets will be self cleaning and free of areas where solids could be deposited. Flow channels shall be formed to match the bottom halves of the inflowing pipes and the outflowing pipe as shown by the drawings. Inlet floors shall have slopes of 3 inches per foot in the areas outside of the flow channels sloped toward the flow channels. Pipes laid through inlets shall have the top half removed to neat lines for the full inside diameter of the inlet. Inlet floors shall then be shaped around the bottom half of the pipe which forms the flow channel.
- Pipes installed within the excavation made for the inlet shall be cradled with concrete to the limits of the inlet excavation. When clay pipe is used, the cradle shall extend to the first joint outside the inlet. The cradle shall be terminated at the clay pipe joint in a manner which will maintain the flexibility of the joint. Cost of cradle within inlet excavation or to clay pipe joints adjacent to inlet shall be included in the unit price bid for the inlet.
- Inlet grate castings and inlet frame castings shall conform to the requirements as indicated in the standard specifications and as shown in the standard detail drawing.
- The crowns of inflowing pipes shall never be set lower than the crown of the outflowing pipe.
- Joints between inlet sections to be sealed with two wraps of extruded butyl rubber joint mastic meeting City of Wichita Type "P" Manhole Specifications.
- Special yard inlet shall be paid for at the unit price bid per each. All standard yard inlet diameters will be 4'.

		City of Wichita, Kansas Special Yard Inlet	
<small>Baughman Company, P.A. 315 Elm St. Wichita, KS 67211 F 316-262-7271 F 316-262-6149 ENGINEERING SURVEYING PLANNING LANDSCAPE ARCHITECTURE</small>			
PROJECT NUMBER 1477 FWS (607861)	DESIGN C.O.W.	DRAWN Staff	DATE
REVISIONS	APPROVED	SCALE None	SHEET
			8 OF 16
<small>F:\Eng\Draw\Seven\YardInlet.dwg</small>			