

SWS 215, SEWER AT 13th & WOODLAWN

CITY OF WICHITA, KANSAS
DEPARTMENT OF ENGINEERING

R.W. BRUGGEMAN, DIRECTOR OF ENGINEERING / CITY ENGINEER

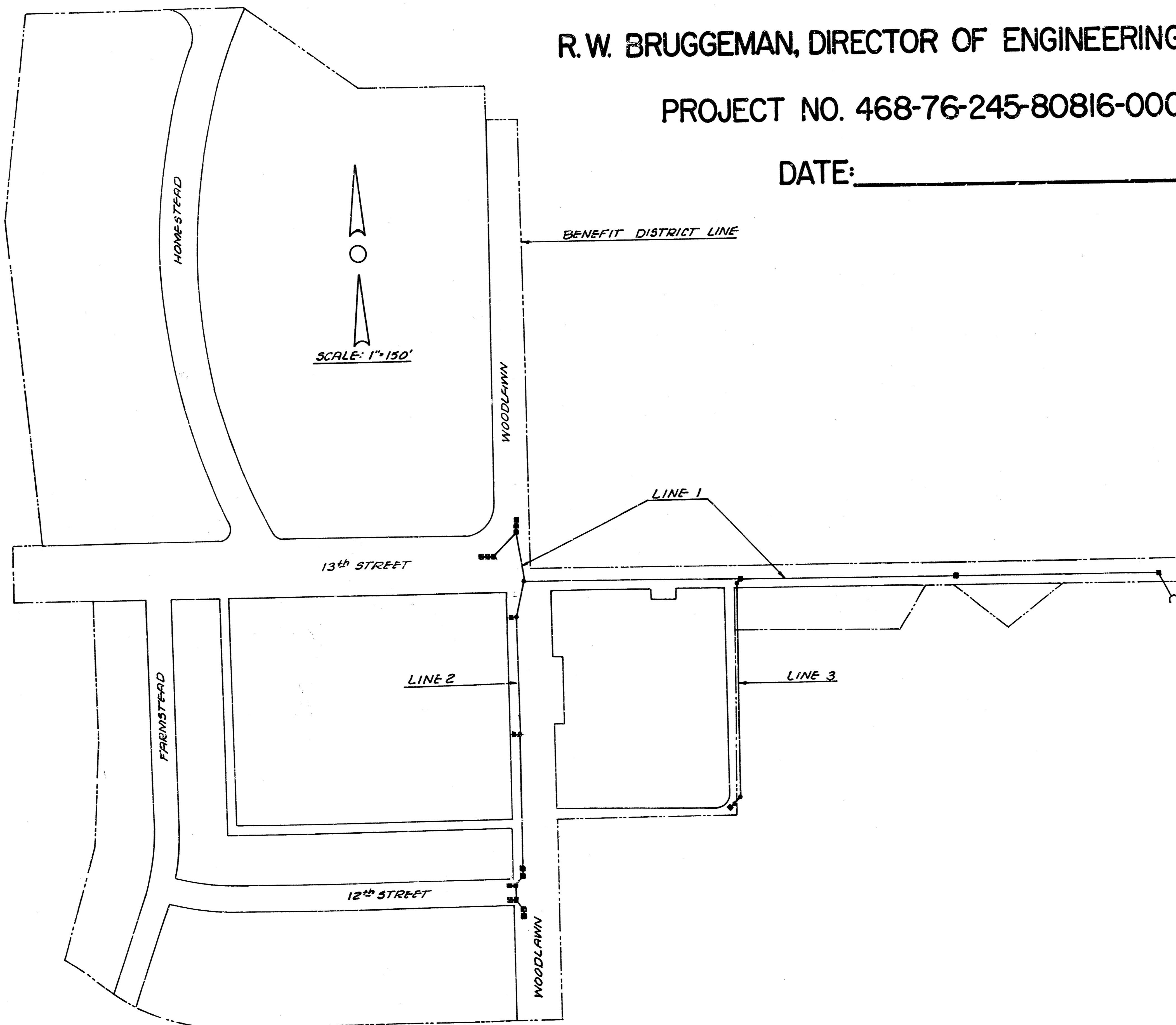
PROJECT NO. 468-76-245-80816-000-000-001

DATE: _____

GENERAL NOTES

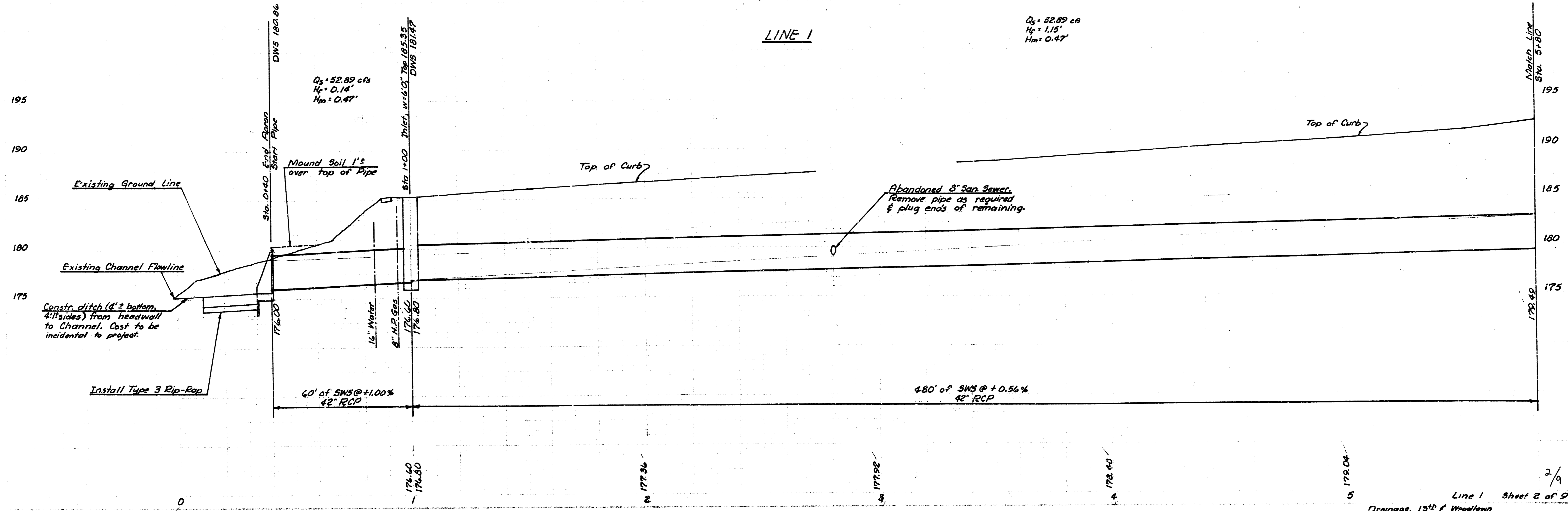
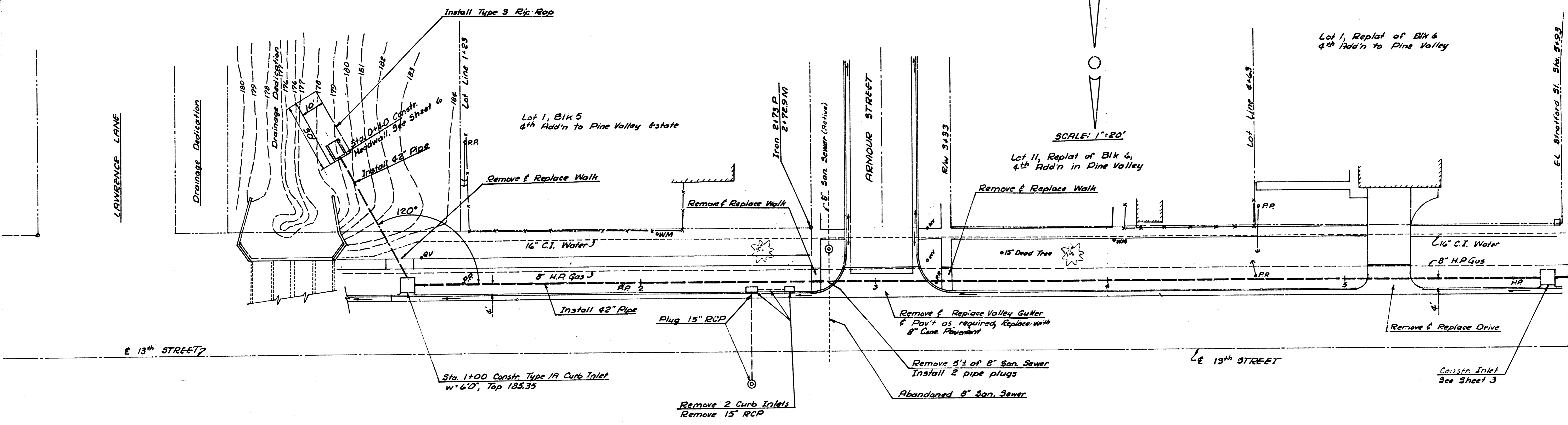
1. ALL CORRUGATED METAL PIPE ON THIS PROJECT SHALL BE FULLY COATED.
2. CURB INLETS ON THIS PROJECT SHALL BE LOCATED BY THE ENGINEER WITH REFERENCE TO THE CONSTRUCTION PLANS. ANY INTERFERING OR PIPE WHICH CONFLICTS WITH EXISTING UTILITIES MAY BE ALTERED IF SUCH ALTERATION IS SATISFACTORY IN THE OPINION OF THE ENGINEER. THE FIELD ENGINEER SHALL HAVE THE PREROGATIVE TO INTERCHANGE TYPE "I" CURB INLETS AND TYPE "I-A" CURB INLETS WITHOUT A CHANGE OF BID ITEMS.
3. CONTRACTOR SHALL COORDINATE WORK WITH WATER, ELECTRIC, TRAFFIC CONTROL, GAS AND OTHER UTILITY COMPANIES SO MINIMUM INCONVENIENCE WILL OCCUR TO GENERAL PUBLIC. CONTRACTOR SHALL BE RESPONSIBLE FOR CONTACTING ALL UTILITY COMPANIES FOR RELOCATION OF EXISTING SERVICES.
4. EARTHWORK DOWNSTREAM FROM HEADWALL AND FOR RIP-RAP SHALL BE PAID FOR IN OTHER BID ITEMS.
5. ALL IRONS AND THIMBLES DISTURBED BY THE CONTRACTOR DURING CONSTRUCTION OF THIS PROJECT SHALL BE REPLACED BY THE ENGINEER.
6. ALL CONCRETE SHALL BE "6-SACK CONCRETE" UNLESS OTHERWISE SPECIFIED.
7. COST OF "HOOK-UP" FROM GUTTER TO CURB INLET TO BE CONSIDERED IN BID FOR CURB INLET AND/OR CURB AND GUTTER AND SHALL NOT BE A SEPARATE PAY ITEM WITHIN THIS PROJECT. GUTTER FLOWLINE SHALL BE 1" BELOW STANDARD GUTTER AT INLET. SEE SHEET 9 FOR "HOOK-UP" DETAILS.
8. COMBINED CURB AND GUTTER AND SEPARATE CURB AND GUTTER REMOVED AND REPLACED ON THIS PROJECT SHALL BE BID AS "COMBINED CURB AND GUTTER REMOVED AND REPLACED". EXISTING PAVING PLANS OF 13TH STREET AND WOODLAWN INDICATE THAT CURB AND GUTTER AND CONCRETE BASE FOR ASPHALT WEARING SURFACE ARE TIED TOGETHER WITH DOWELS. SUCH DOWELS SHALL REMAIN FOR CURB AND GUTTER REPLACED.
9. THE ASPHALT WEARING SURFACE REMOVED AND REPLACED SHALL BE PAID FOR AS SQUARE YARD BID FOR "ASPHALT MAT REMOVED AND REPLACED". SAW JOINTS SHALL BE USED AT REMOVAL LIMITS.
10. EXISTING CURB ALIGNMENT TO BE MAINTAINED.
11. ANY NEW CURB ON 13TH STREET TO BE AT SAME ELEVATIONS AS EXISTING CURB PRIOR TO REMOVAL. FIELD ENGINEER TO DETERMINE THE AMOUNT OF CURB AND GUTTER TO BE REMOVED AND REPLACED IN THE AREA BETWEEN DRAINAGE CHANNEL AND WOODLAWN.
12. PROPOSED CURB ELEVATIONS ON WOODLAWN SHALL BE AS SHOWN ON THE PLANS. ANY AREA WHERE THE CONCRETE BASE SHOULD BE REMOVED IN THE JUDGEMENT OF THE ENGINEER - SUCH CONCRETE BASE REMOVAL AND REPLACEMENT SHALL BE PAID FOR AS SQUARE YARD BID FOR "CONCRETE BASE REMOVED AND REPLACED".
13. FIELD ENGINEER SHALL DETERMINE ALL REMOVAL LIMITS. REMOVAL OF CONCRETE DRIVES, WALKS, ETC., TO BE AT NEAREST JOINT WHERE POSSIBLE. ALL OTHER REMOVAL LIMITS TO BE BY SAW JOINT.
14. DO NOT REPLACE ANY WALK OR DRIVE NOT SERVING A PURPOSE.
15. MINIMUM OF TWO LANES OF TRAFFIC TO BE MAINTAINED AT ALL TIMES.
16. CROSSWALK LIGHT AT 13TH AND WOODLAWN TO BE REMOVED AND REPLACED BY DEPARTMENT OF OPERATIONS AND MAINTENANCE.
17. SIDEWALK REMOVED AT INTERSECTIONS IS TO BE REPLACED WITH WHEELCHAIR RAMPS.
18. CONTRACTOR IS TO CONTACT TRAFFIC MAINTENANCE, DEPARTMENT OF OPERATIONS AND MAINTENANCE BEFORE BEGINNING CONSTRUCTION. TRAFFIC MAINTENANCE WILL DO ALL WORK CONCERNING TRAFFIC SIGNALS AND CROSSWALK LIGHTS.
19. IT SHALL BE THE RESPONSIBILITY OF THE CONTRACTOR TO MAINTAIN THE OPERATION OF THE SCHOOL CROSSING SIGNAL AT 13TH AND STRATFORD AT ALL TIMES DURING ITS NORMAL OPERATING TIMES. THE METHOD OF MAINTAINING THE OPERATION OF THE SCHOOL CROSSING SHALL BE LEFT TO THE CONTRACTOR. HOWEVER, THE METHOD USED SHALL BE APPROVED BY PAUL TAYLOR, DIRECTOR OF TRAFFIC MAINTENANCE, DEPT. OF OPERATIONS AND MAINTENANCE, PRIOR TO BEGINNING CONSTRUCTION. CONTRACTOR SHALL ALSO BE REQUIRED TO PROVIDE ACCESS FOR PEDESTRIAN TRAFFIC ACROSS TRENCH DURING THE TIMES THE SIGNAL IS IN OPERATION.
20. TEMPORARY ASPHALT HOOKUPS SHALL BE PROVIDED FROM BACK OF EXISTING CURB TO NEW INLETS WHERE REQUIRED TO PROVIDE DRAINAGE UNTIL THE PAVING PROJECT IS CONSTRUCTED. COST SHALL BE INCIDENTAL TO PROJECT.

THE CONTRACTOR SHALL BE RESPONSIBLE FOR PRESERVING PROPERTY AND THE CONTRACTOR SHALL BE REQUIRED TO RE-ESTABLISH ANY PROPERTY LINES WHICH ARE DAMAGED OR DESTROYED BY THE CONSTRUCTION OPERATIONS. SUCH PROPERTY LINES SHALL BE RE-ESTABLISHED BY A LICENSED LAND SURVEYOR OR A LICENSED PROFESSIONAL ENGINEER IN ACCORDANCE WITH STATE LAWS.

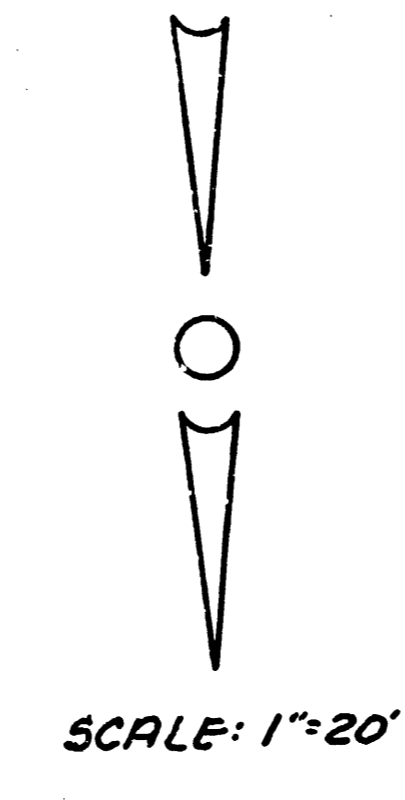
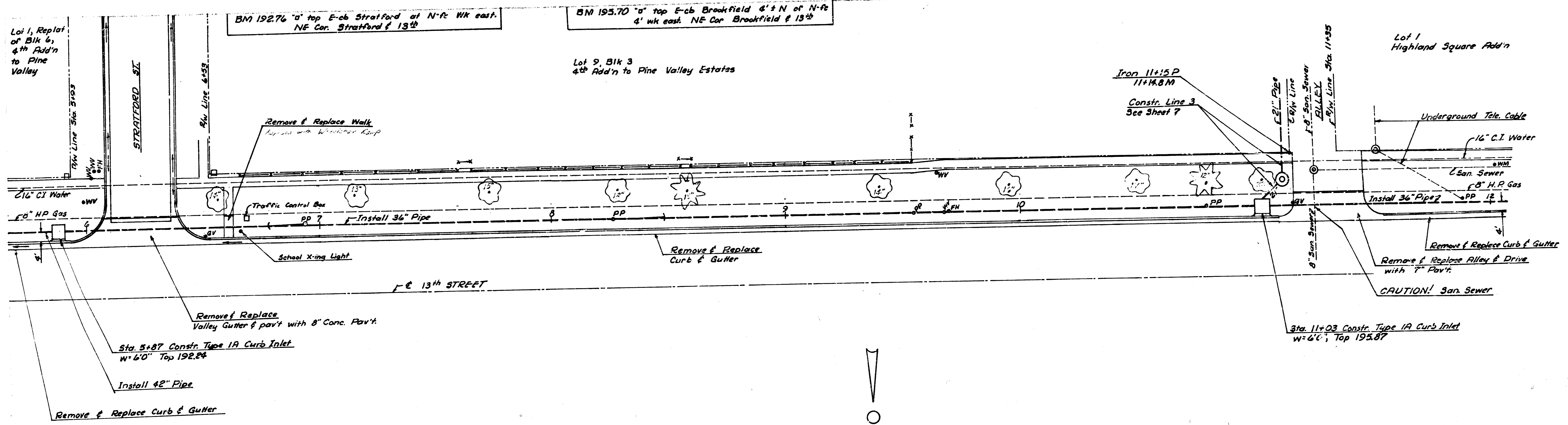


BM 188.38 Brass Cap E-end handrail, N-side
RCB 13th St west of Lawrence Ln.

BM 188.20 "a" E-cb Armour E'N of N-ft wk east @
NE Cor. Armour & 13th

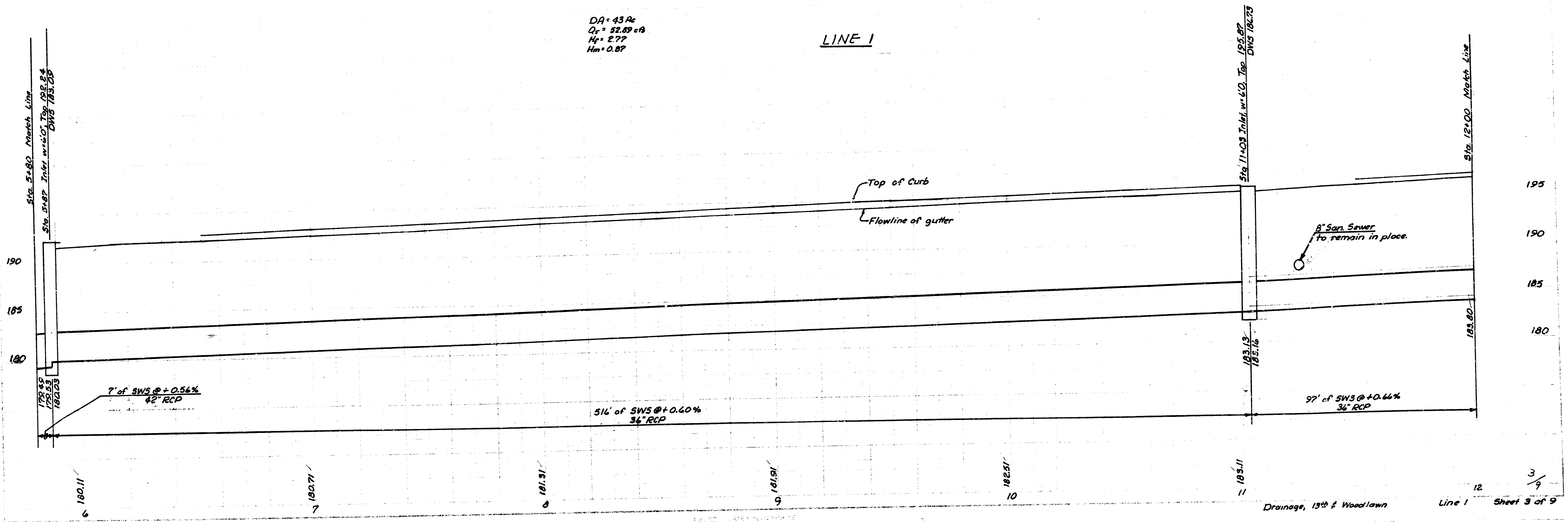


FILMED FROM THE BEST

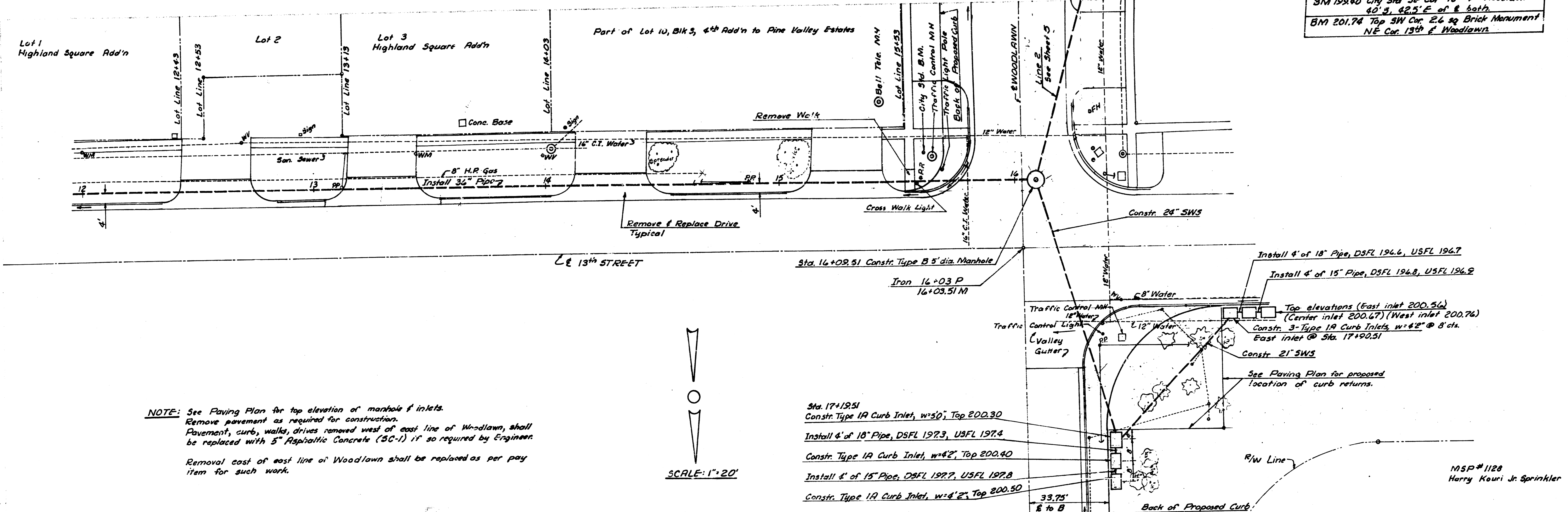


DA = 43.42
 Q_F = 52.89 cfs
 H_F = 2.77
 H_m = 0.87

LINE 1



3M 19240 City Std SE Cor 13th & Woodlawn
 40' x 42.5' E of & both
 BM 201.74 Top 3W Cor 2.6 sq Brick Monument
 NE Cor 13th & Woodlawn



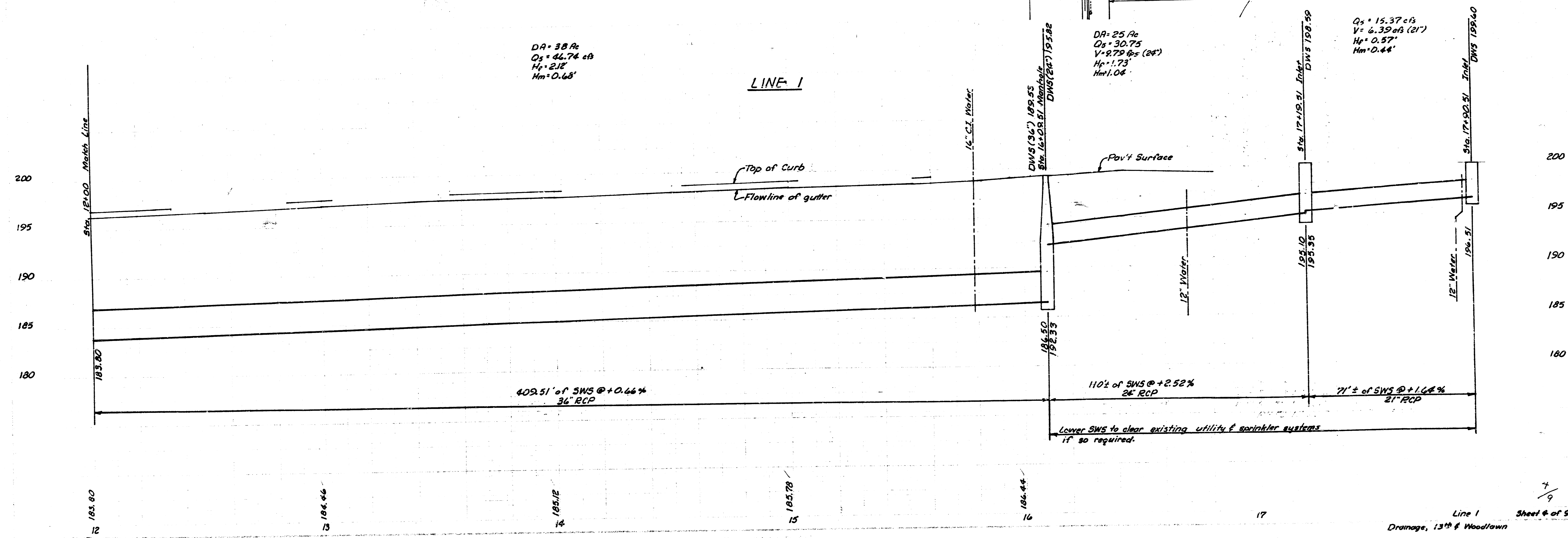
NOTE: See Paving Plan for top elevation of manhole & inlets.
 Remove pavement as required for construction.
 Pavement, curb, walks, drives removed west of east line of Woodlawn, shall be replaced with 5" Asphaltic Concrete (5C-1) if so required by Engineer.
 Removal east of east line of Woodlawn shall be replaced as per pay item for such work.

SCALE: 1" = 20'

DA = 38.4cfs
 Qs = 46.74 cfs
 Hs = 2.12'
 Hm = 0.68'

Sta. 17+19.51
 Constr. Type 1A Curb Inlet, w=5'0", Top 200.30
 Install 4' of 18" Pipe, DSFL 197.3, USFL 197.4
 Constr. Type 1A Curb Inlet, w=4'2", Top 200.40
 Install 4' of 15" Pipe, DSFL 197.7, USFL 197.8
 Constr. Type 1A Curb Inlet, w=4'2", Top 200.50

MSP # 1128
 Harry Kouri Jr. Sprinkler



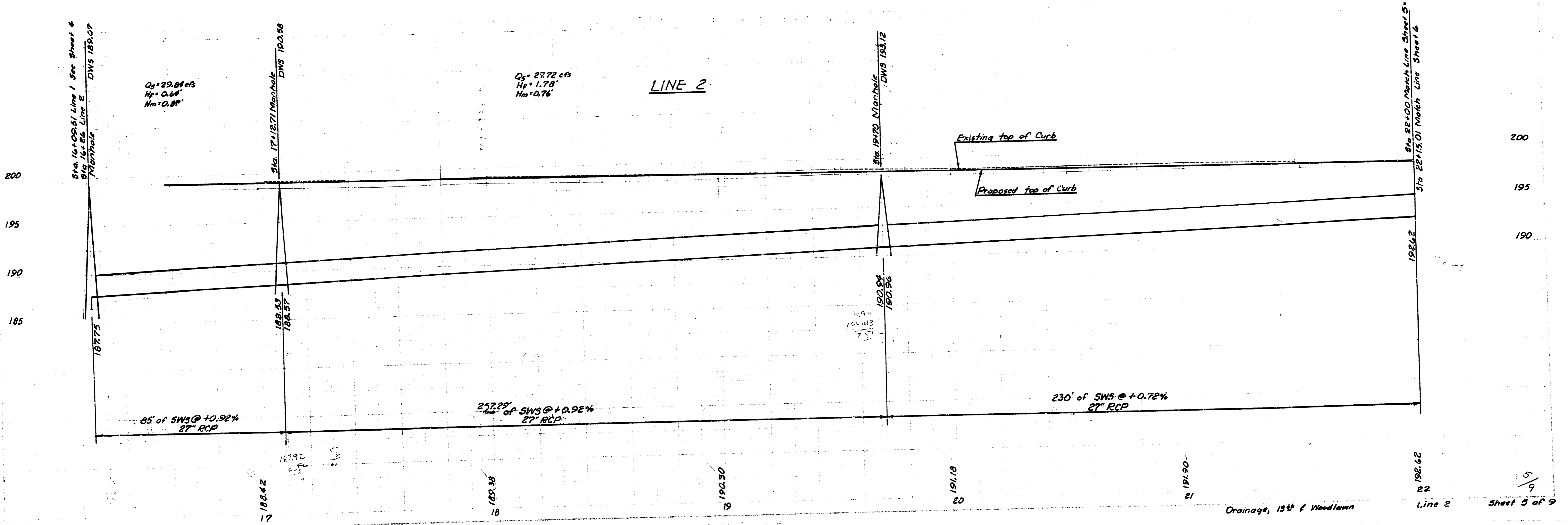
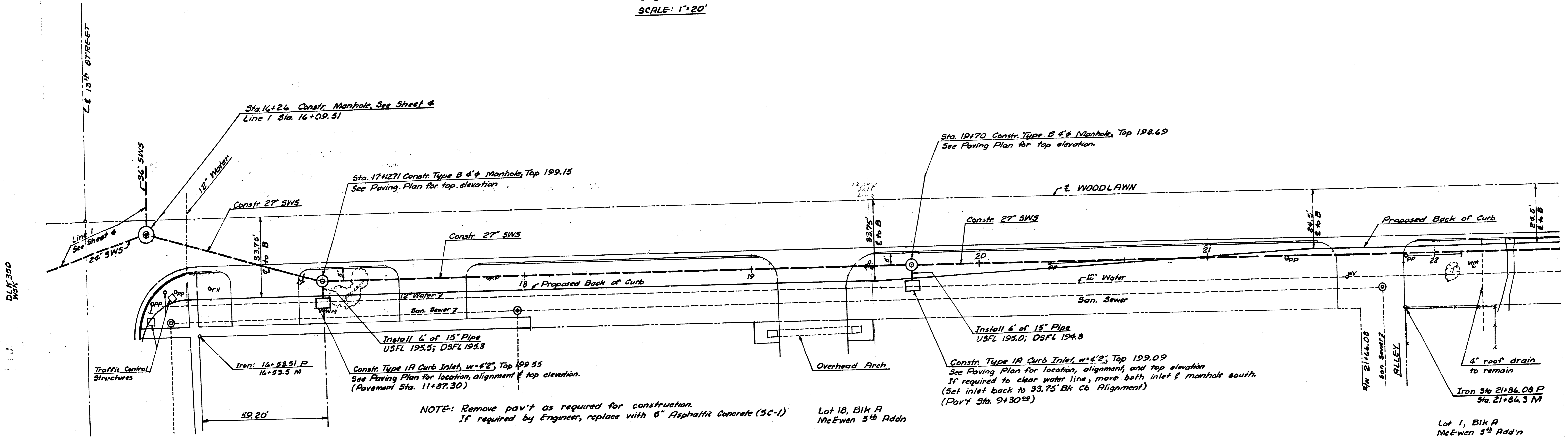
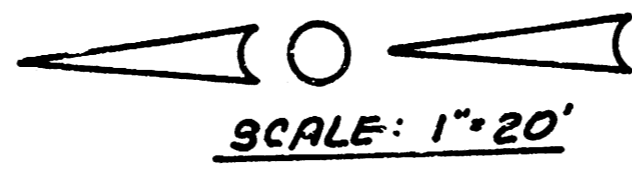
402.51' of SWS @ +0.46%
 36" RCP

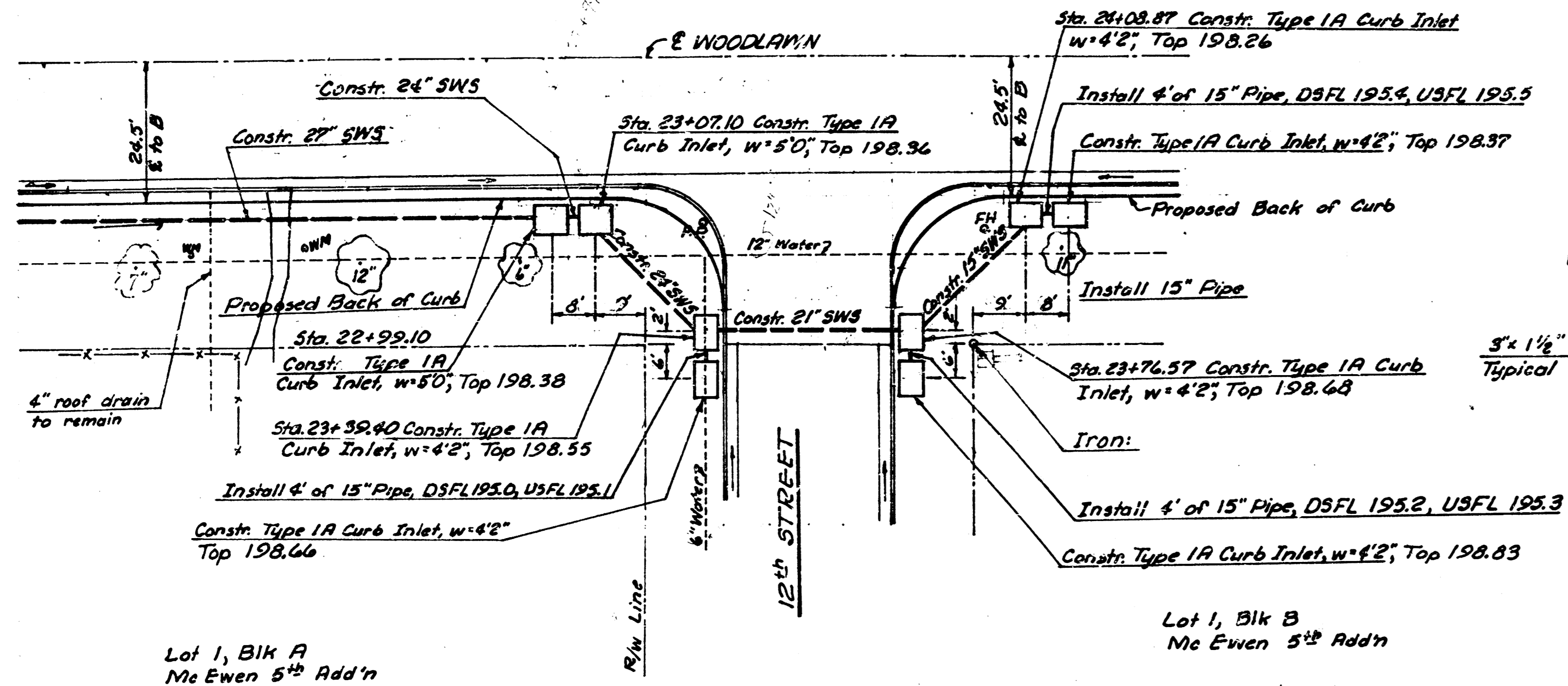
110'± of SWS @ +2.52%
 24" RCP

71'± of SWS @ +1.64%
 21" RCP

Lower SWS to clear existing utility & sprinkler systems if so required.

BM 201.74 Top SW Cor. Brick Monument NE Cor. 12th & Woodlawn

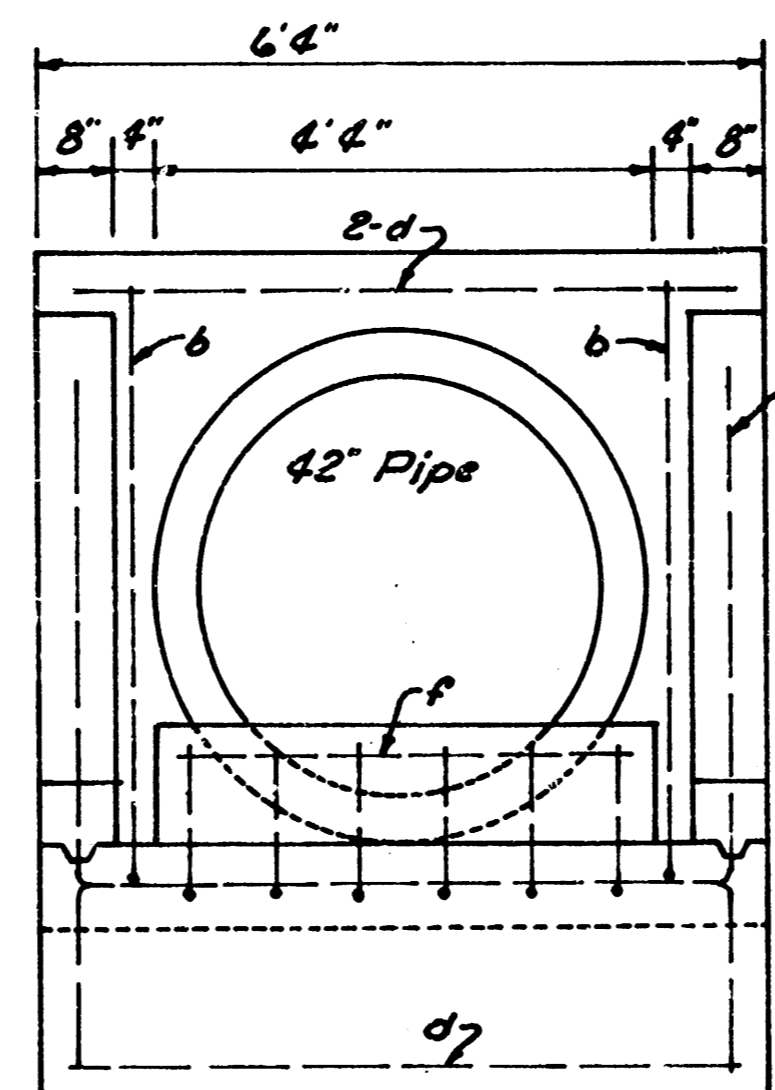
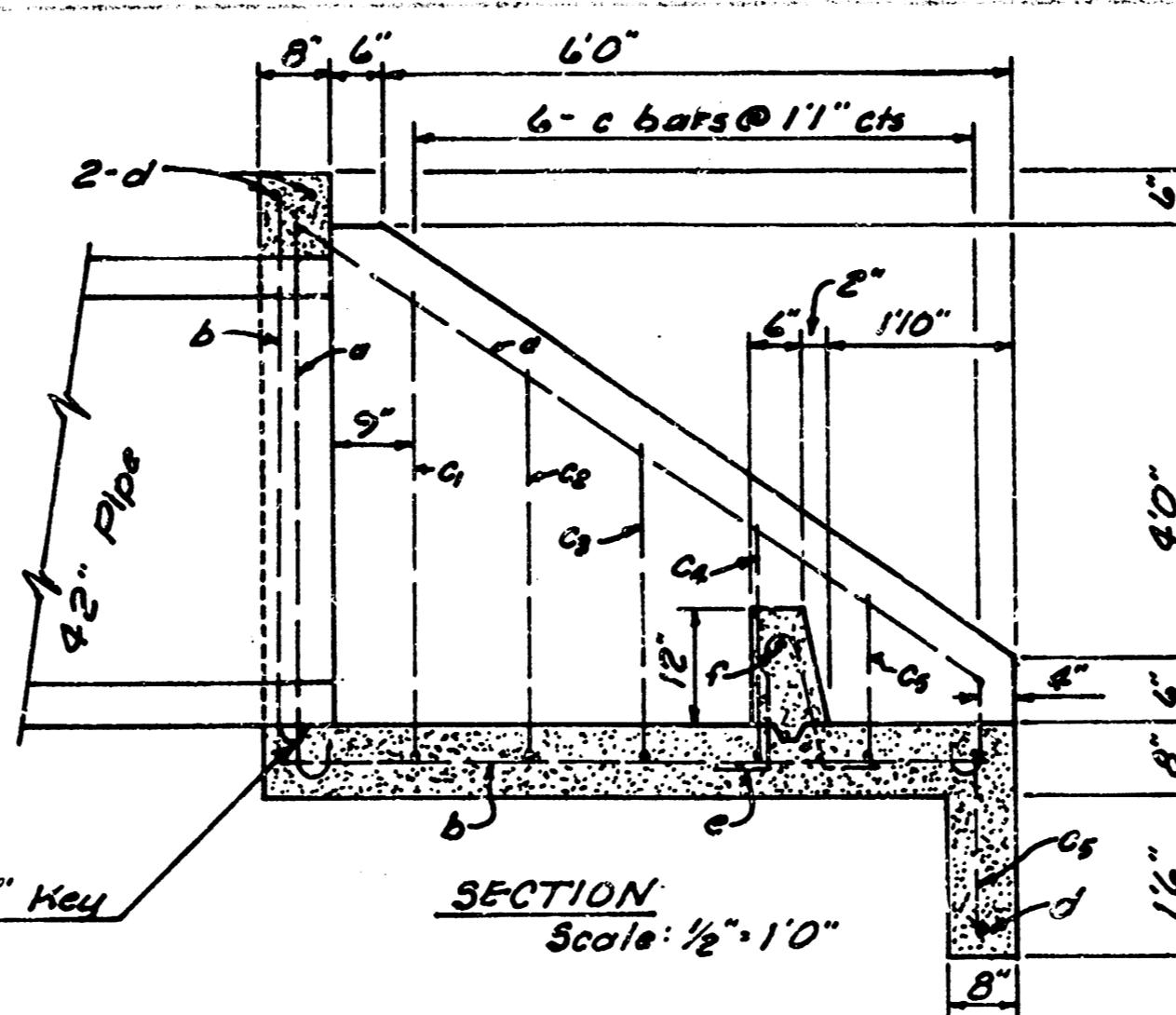




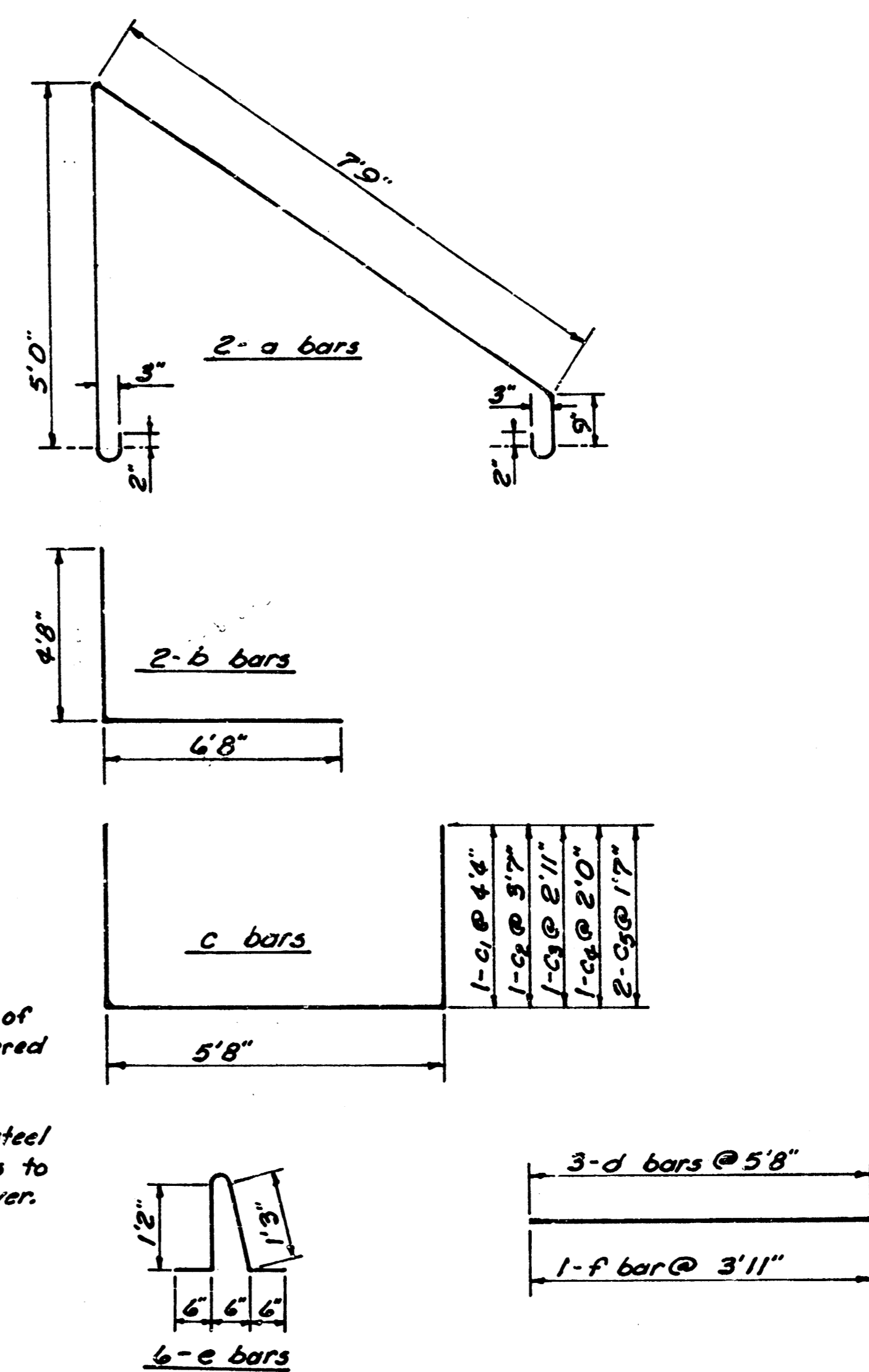
Lot 1, Blk A
Mc Ewen 5th Add'n

Lot 1, Blk B
Mc Ewen 5th Add'n

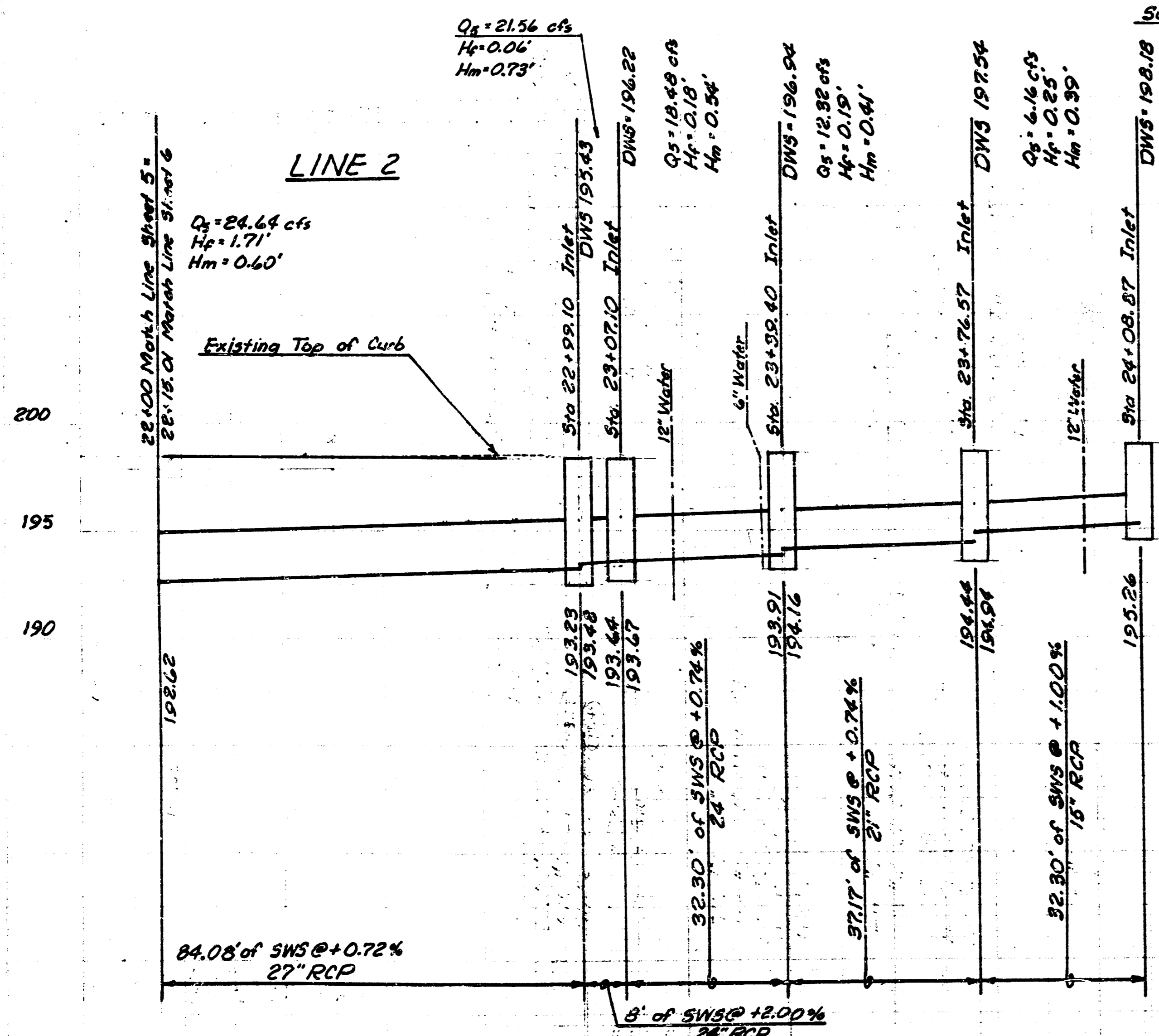
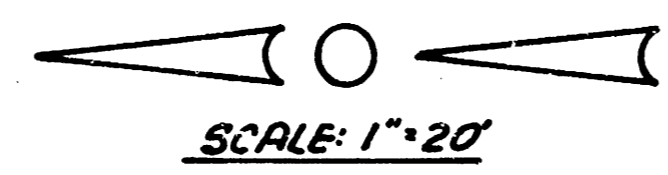
NOTE: See Paving Plans for top elevation of Manhole & Inlets.
Remove pavement as required for construction. If required
by Engineer, replace pavement with 5" Asphaltic Concrete (3C-1).



HEADWALL FOR 42" PIPE, STA. 0+40 Line 1



All exposed edges of
concrete to be chamfered
1/2 inch.
Use #4 reinforcing steel
thru-out. All rebars to
have 2" min. conc. cover.

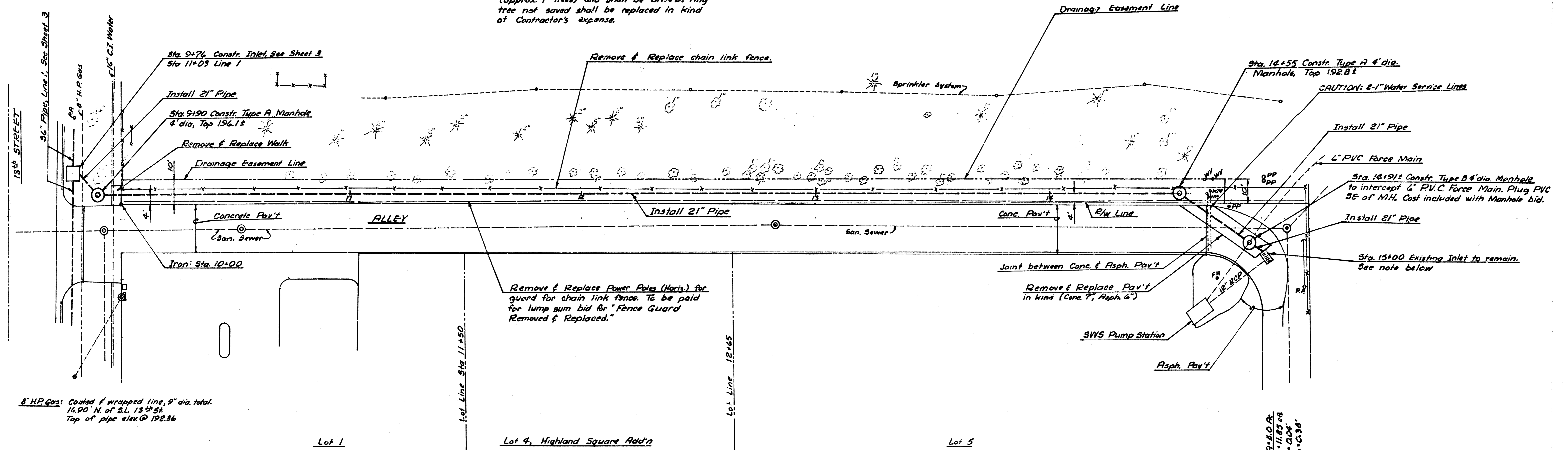


Lot 9, Blk 3, 4th Add'n to Pine Valley Estates

BM 199.10 City Std SF Cor. 13th & Woodlawn 40'S, 42.5'E of E. Bench

SCALE: 1"=20'

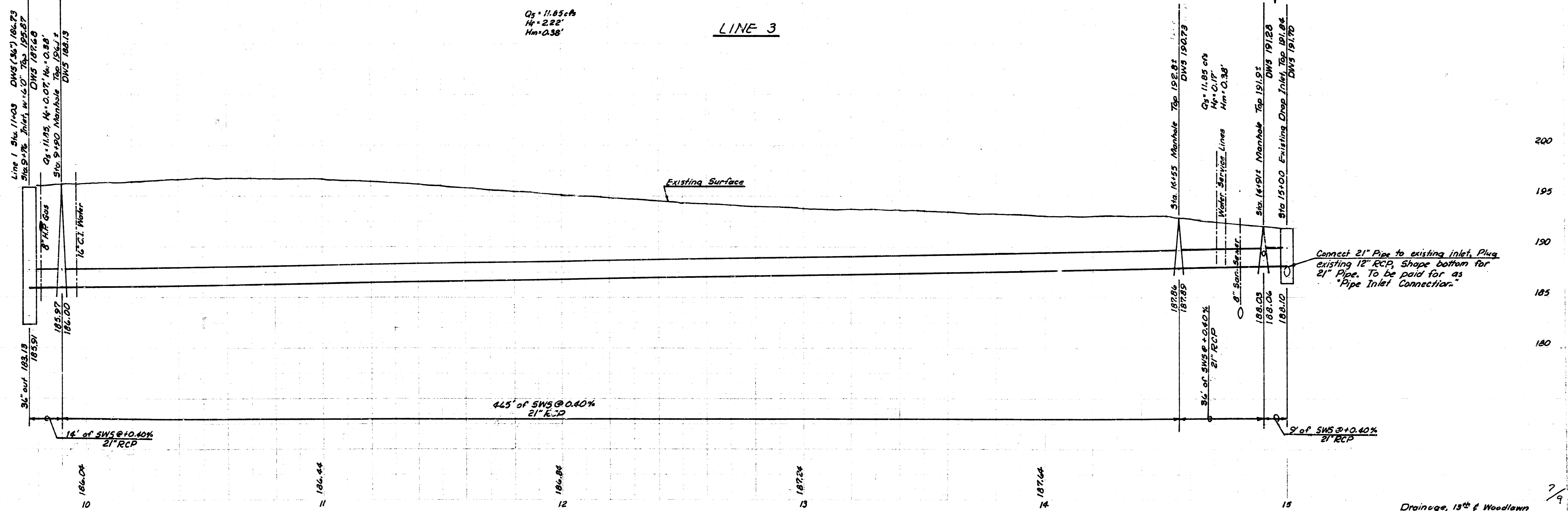
NOTE: Trees east of fence are newly planted trees (approx. 1" trees) and shall be SAVED. Any tree not saved shall be replaced in kind at Contractor's expense.



8" H.P. Gas: Coated & wrapped line, 8" dia. total. 16.90' N. of S.L. 13th St. Top of pipe elev @ 192.36

Remove & Replace Power Poles (Horiz.) for guard for chain link fence. To be paid for lump sum bid for "Fence Guard Removed & Replaced."

Sta. 15+00 Existing Inlet to remain. See note below



Connect 21" Pipe to existing inlet. Plug existing 12" RCP. Shape bottom for 21" Pipe. To be paid for as "Pipe Inlet Connector."

