

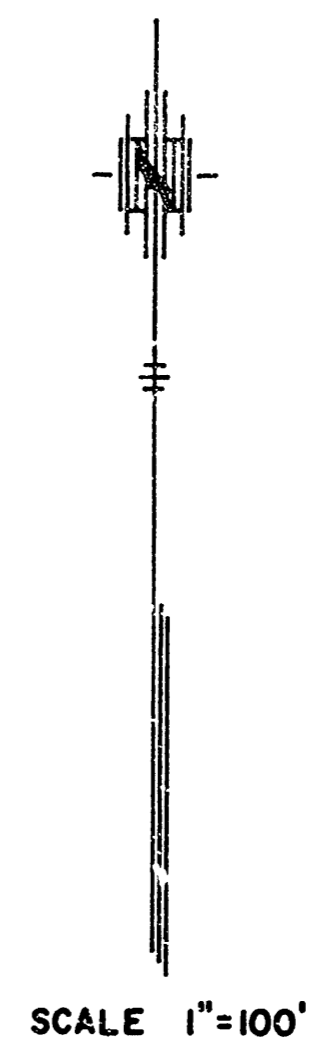
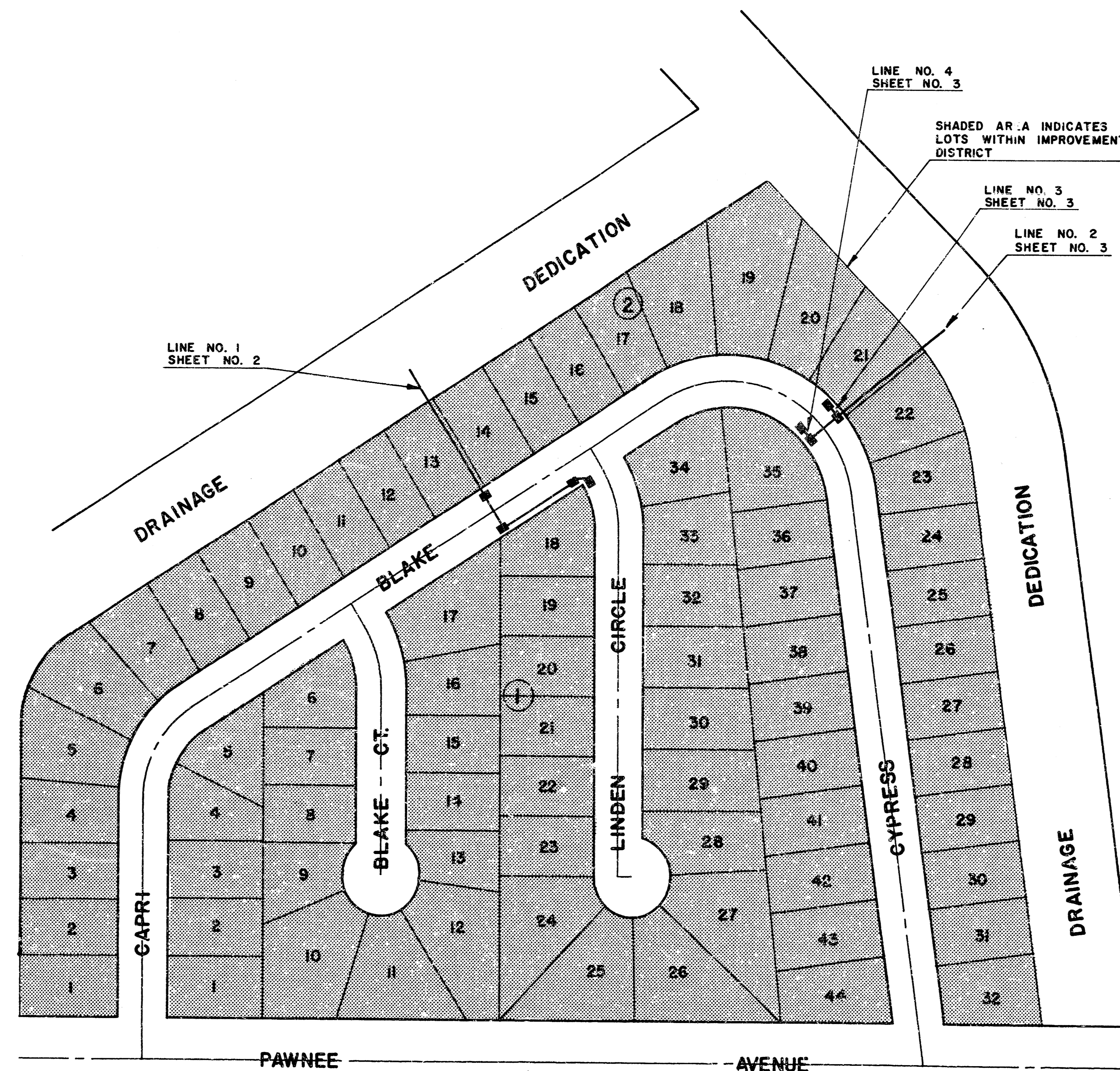
PLANS  
**STORM WATER SEWER NO. 219**  
 SERVING  
**HEDGECLIFF 2ND ADDITION**  
**CITY OF WICHITA**

PROJECT NO. 468 76 245 81055 000 000 001  
 DATE: JULY 1981

NOTE:  
 THE CONTRACTOR SHALL BE RESPONSIBLE FOR PRESERVING PROPERTY IRON. THE CONTRACTOR SHALL BE REQUIRED TO RE-ESTABLISH ANY PROPERTY IRONS WHICH ARE DAMAGED OR DESTROYED BY HIS CONSTRUCTION OPERATIONS. SUCH IRONS SHALL BE RE-ESTABLISHED BY A LICENSED LAND SURVEYOR OR A LICENSED PROFESSIONAL ENGINEER IN ACCORDANCE WITH STATE LAWS.

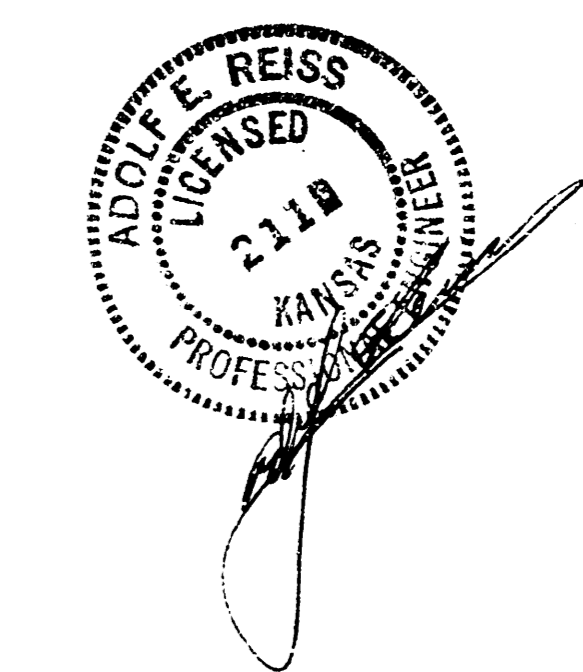
BENCH MARKS:  
 1. CITY BRASS CAP 53' S AND 47' W OF THE CENTERLINE OF PAWNEE AND WEBB ROAD ELEV. 205.678  
 2. RAILROAD SPIKE IN POWER POLE 150' W AND 25' N OF THE CENTERLINE OF CYPRESS AND PAWNEE ELEV. 194.04  
 ELEVATIONS ARE CITY OF WICHITA DATUM.

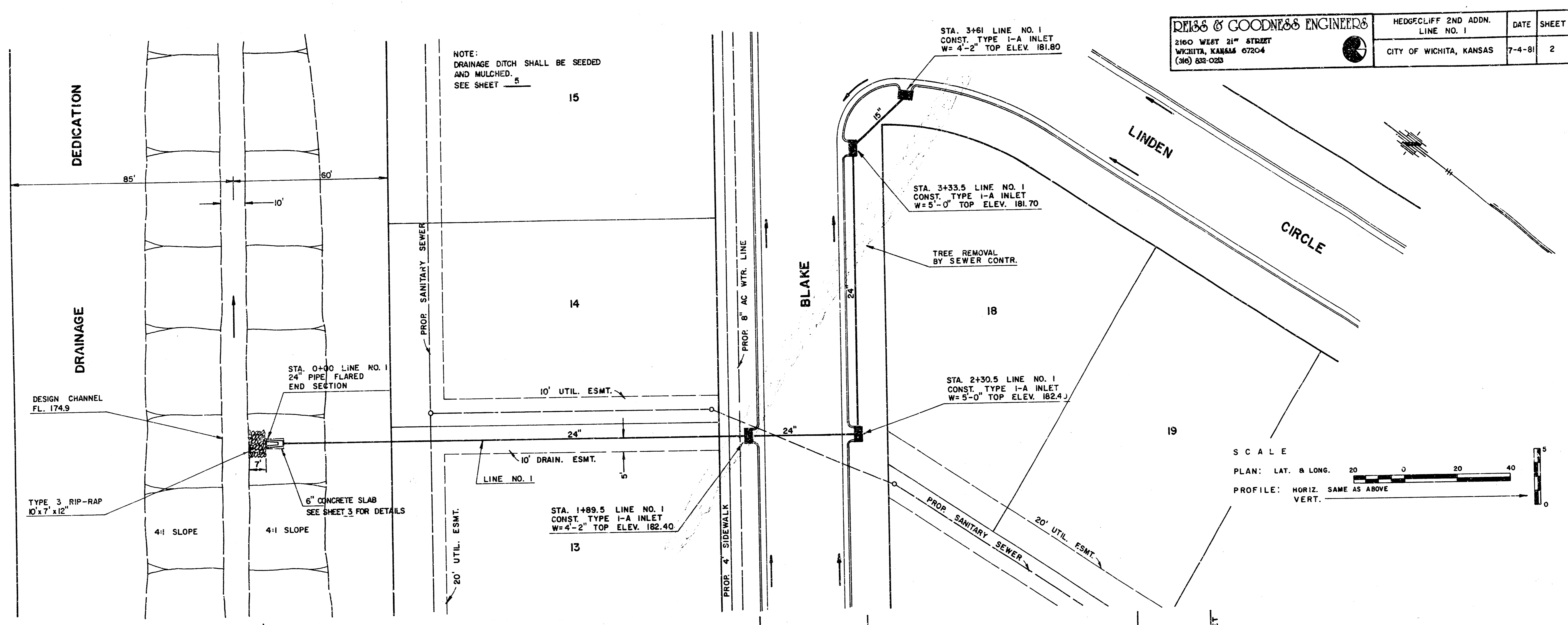
THE CONTRACTOR SHALL NOTIFY PAUL JOHNSTON, FLOOD CONTROL DIRECTOR, PRIOR TO BEGINNING ANY WORK IN OR ABOUT THE DRAINAGE CHANNELS.



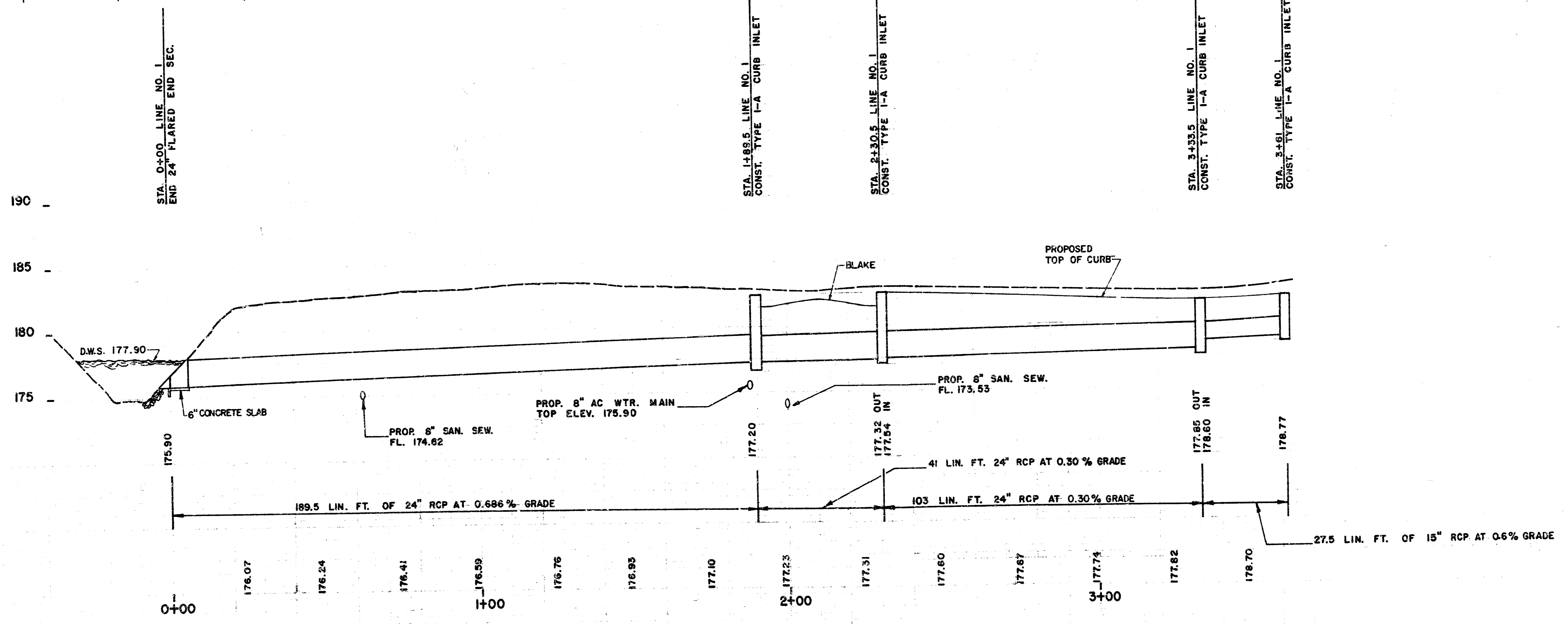
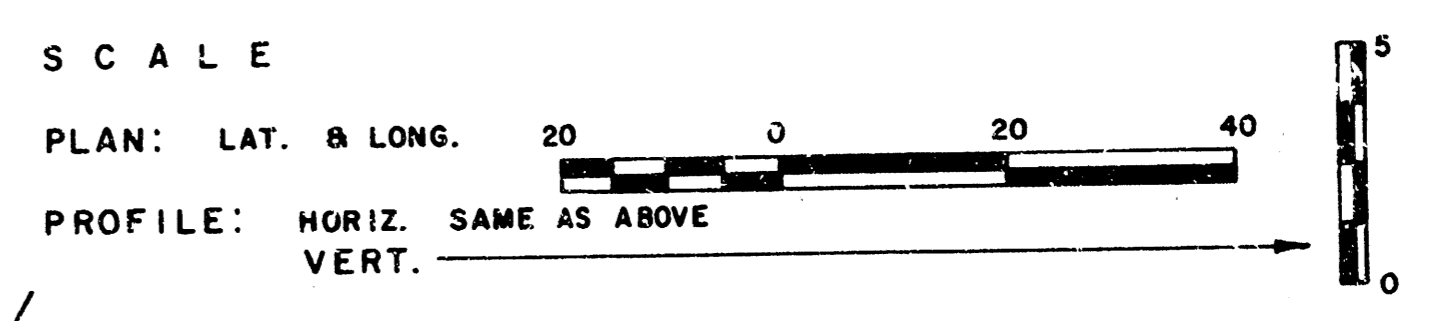
INDEX OF SHEETS

TITLE.....	SHEET NO. 1
LINE NO. 1.....	SHEET NO. 2
LINE NO. 2-3-4.....	SHEET NO. 3
TYPE IA CURB INLET.....	SHEET NO. 4
CHANNEL REPAIR.....	SHEET NO. 5





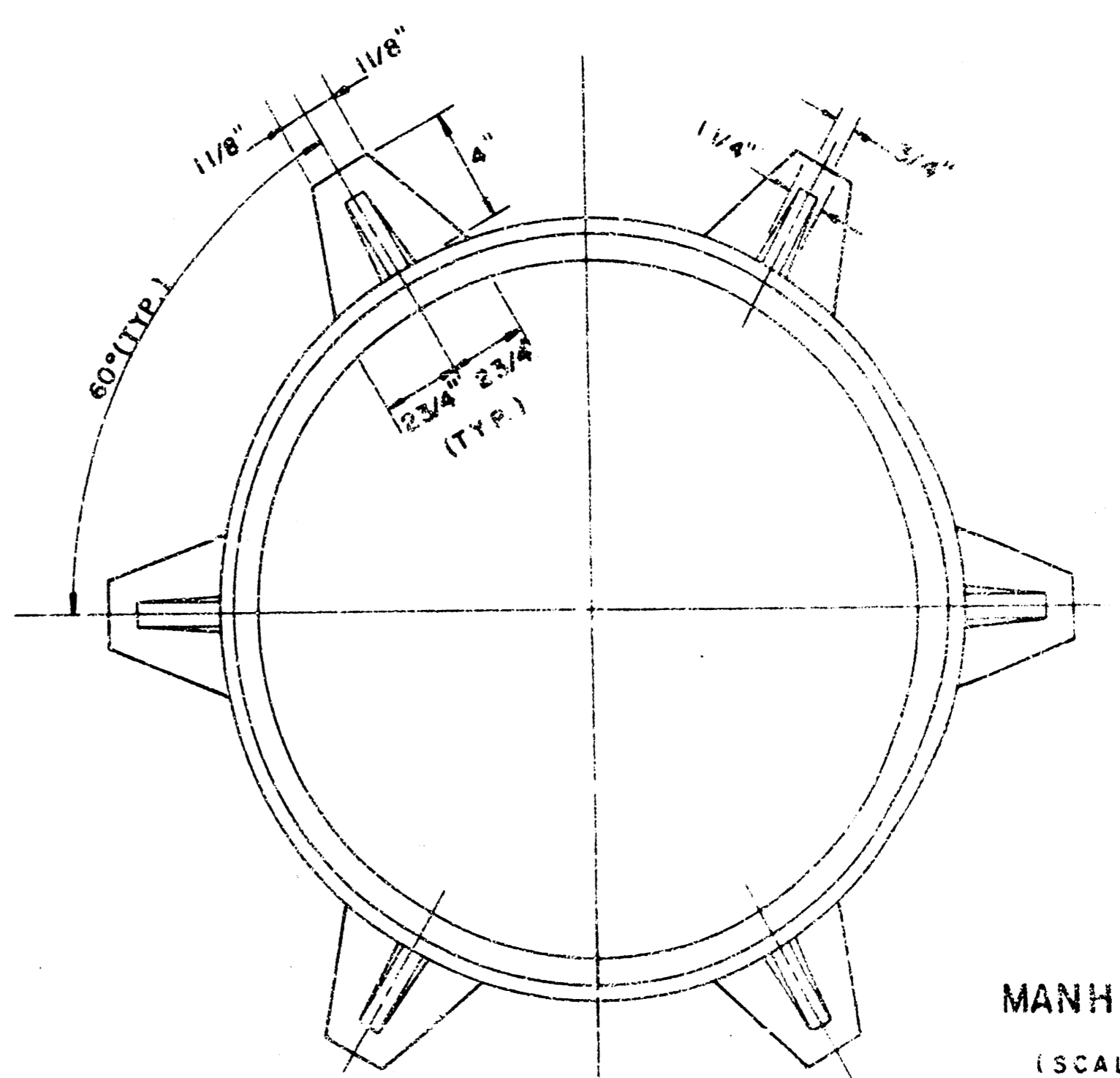
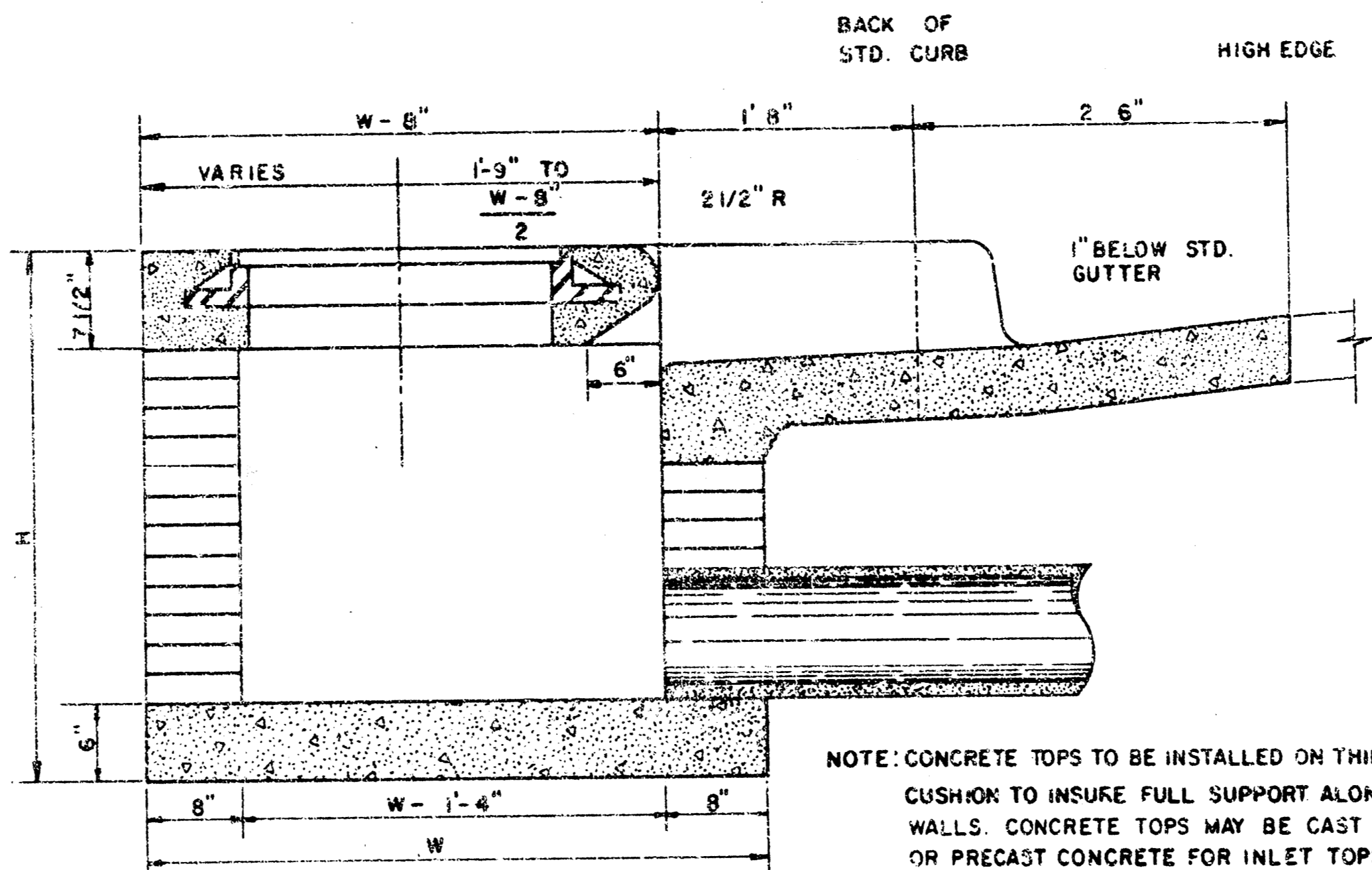
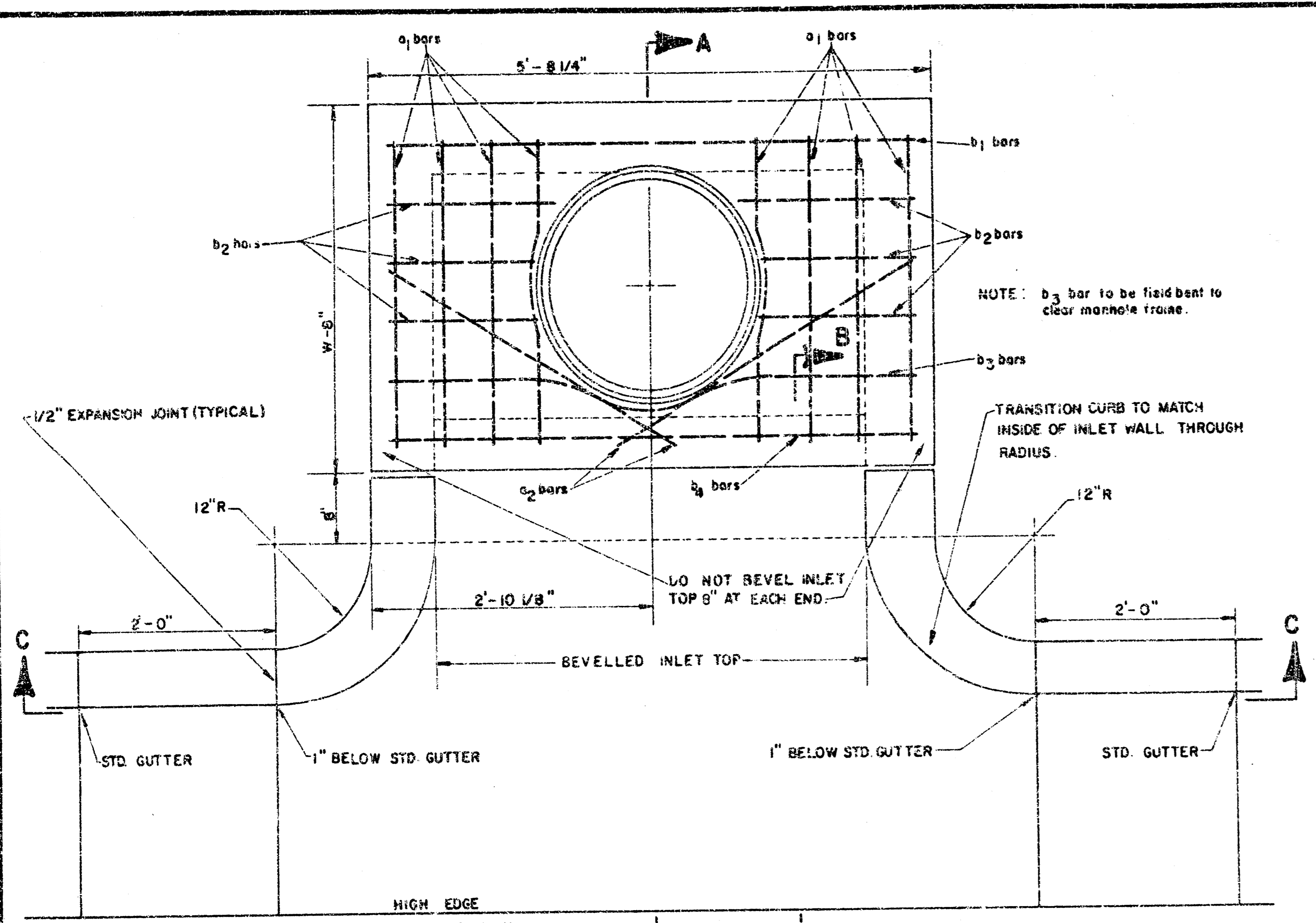
<b>DEISS &amp; GOODNESS ENGINEERS</b> 2160 WEST 21 <sup>ST</sup> STREET WICHITA, KANSAS 67204 (316) 832-0233	HEDGECLIFF 2ND ADDN. LINE NO. 1	DATE	SHEET	TOTAL
	CITY OF WICHITA, KANSAS	7-4-81	2	5



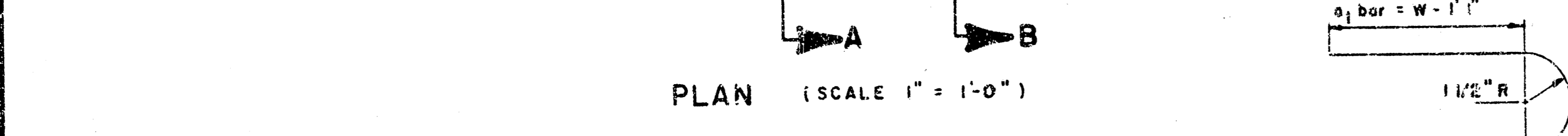
REV'D. 8-31-81

2/5

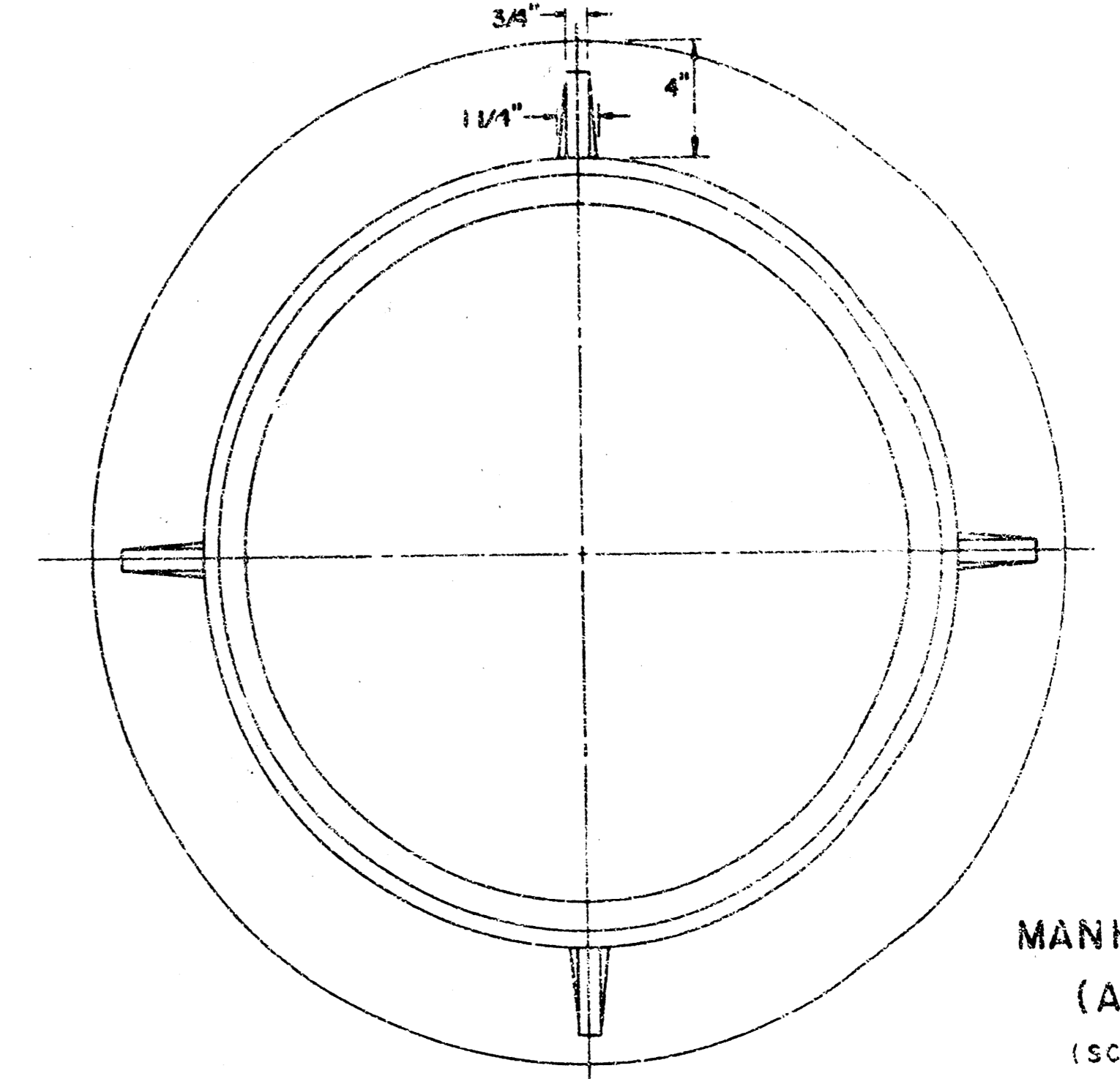
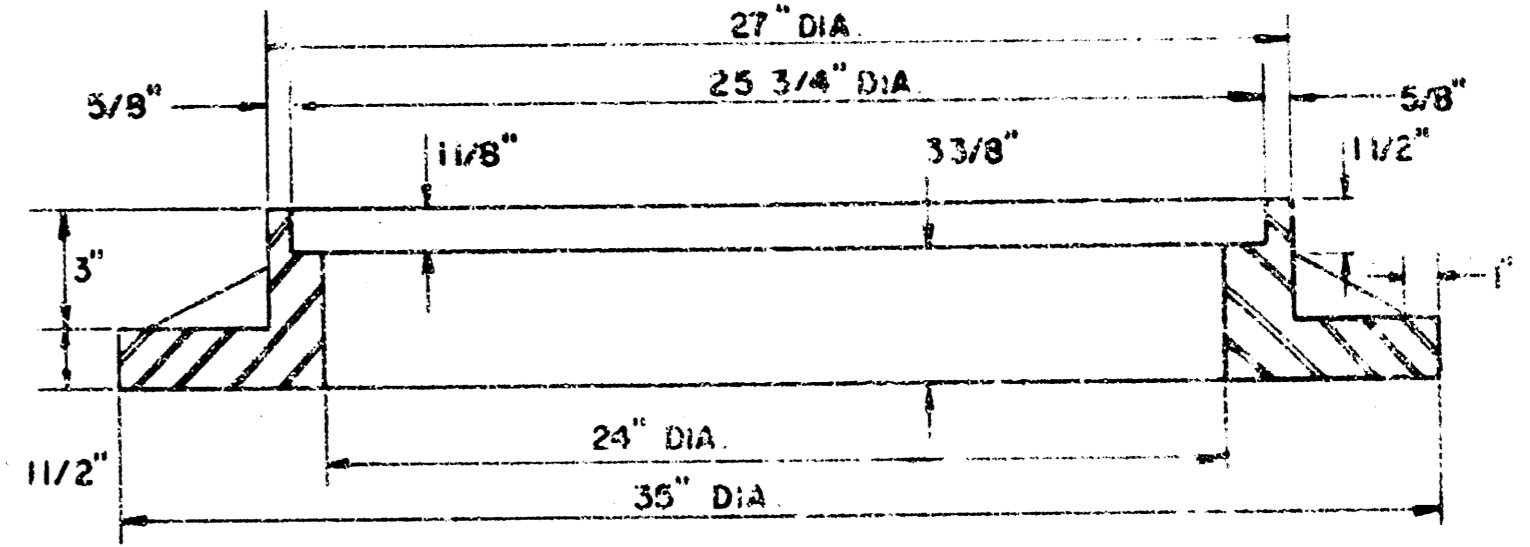




**MANHOLE FRAME**  
(SCALE 1" = 6")  
WEIGHT = 180 LBS.



**SECTION A-A**  
(SCALE 1" = 1'-0")



**MANHOLE FRAME (ALTERNATE)**  
(SCALE 1" = 6")  
WEIGHT = 180 LBS.

**STEEL SCHEDULE**

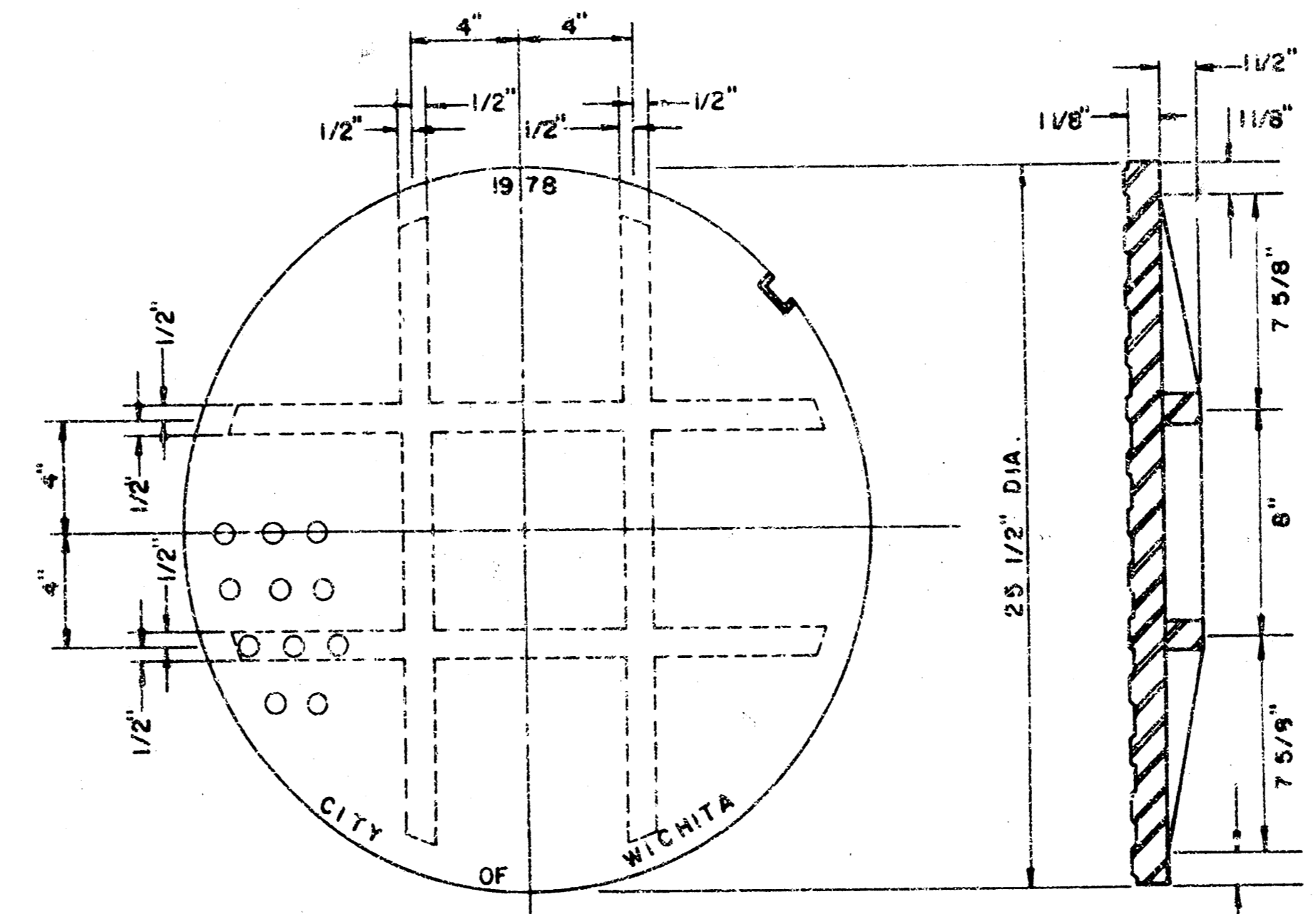
BAR	1	2	3	4	5	6	7	8	9	10	WT. LBS.
NUMBER	8	2	1	3	5	7	9	6	1	1	
SIZE	#4	#4	#4	#4	#4	#4	#4	#4	#4	#4	
W=4'-2"	6'-5"	5'-4"	5'-5"	-	-	-	-	1'-5"	5'-6"	5'-5"	60*
W=5'-0"	6'-1"	4'-4"	5'-5"	-	-	-	-	1'-5"	5'-6"	5'-5"	77*
W=6'-0"	10'-1"	5'-4"	-	5'-5"	-	-	-	1'-5"	5'-6"	5'-5"	97*
W=7'-0"	11'-1"	6'-4"	-	-	5'-5"	-	-	1'-5"	5'-6"	5'-5"	111*
W=8'-0"	12'-1"	7'-4"	-	-	-	5'-5"	1'-5"	5'-6"	5'-5"	124*	

**STANDARD CURB INLET PRECAST TOPS**

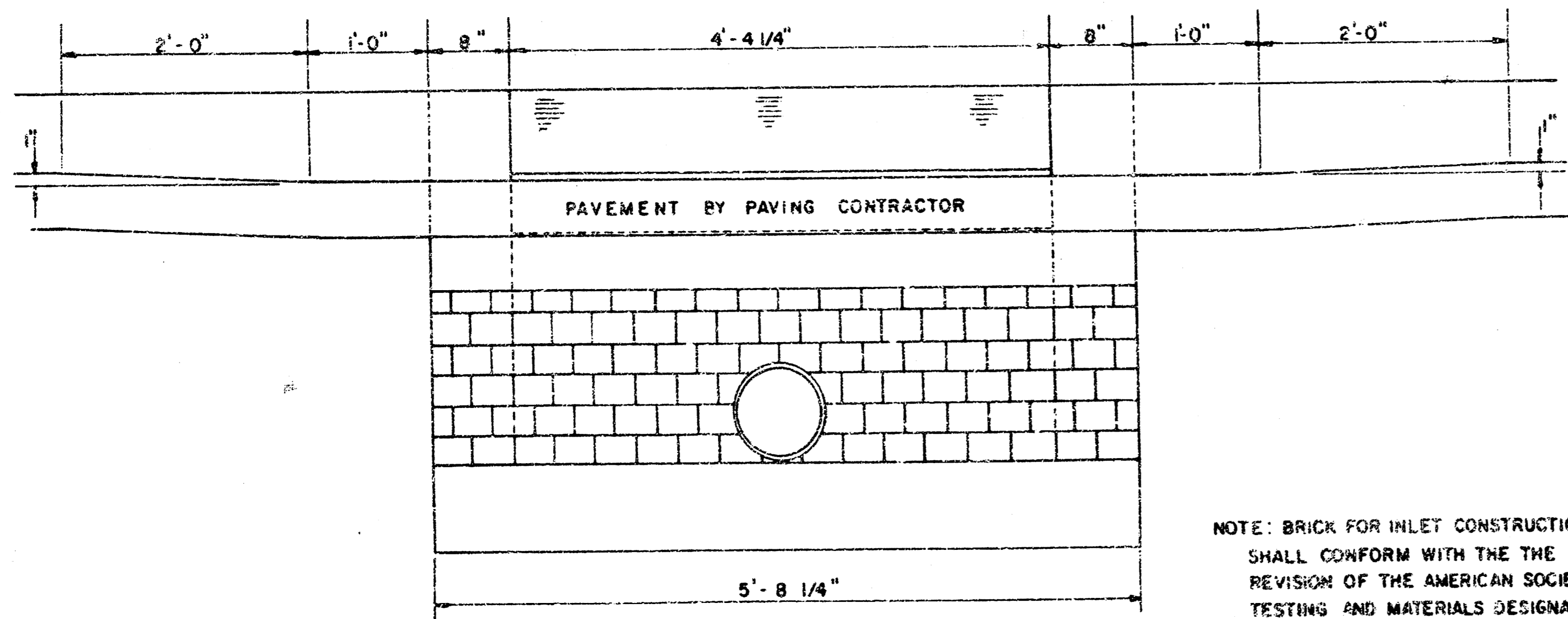
W	PRE-CAST TOP SIZE	PIPE SIZE	CU. YD. CONC.
4'-2"	36"x5'8 1/4"x7 1/2"	21" B SMALLER	0.46*
5'-0"	44"x5'8 1/4"x7 1/2"	24" B 30"	0.57*
6'-0"	54"x5'8 1/4"x7 1/2"	36" B 42"	0.71*
7'-0"	64"x5'8 1/4"x7 1/2"	48" B 54"	0.84*
8'-0"	74"x5'8 1/4"x7 1/2"	60" B 66"	0.97*

\* GROSS VOLUME

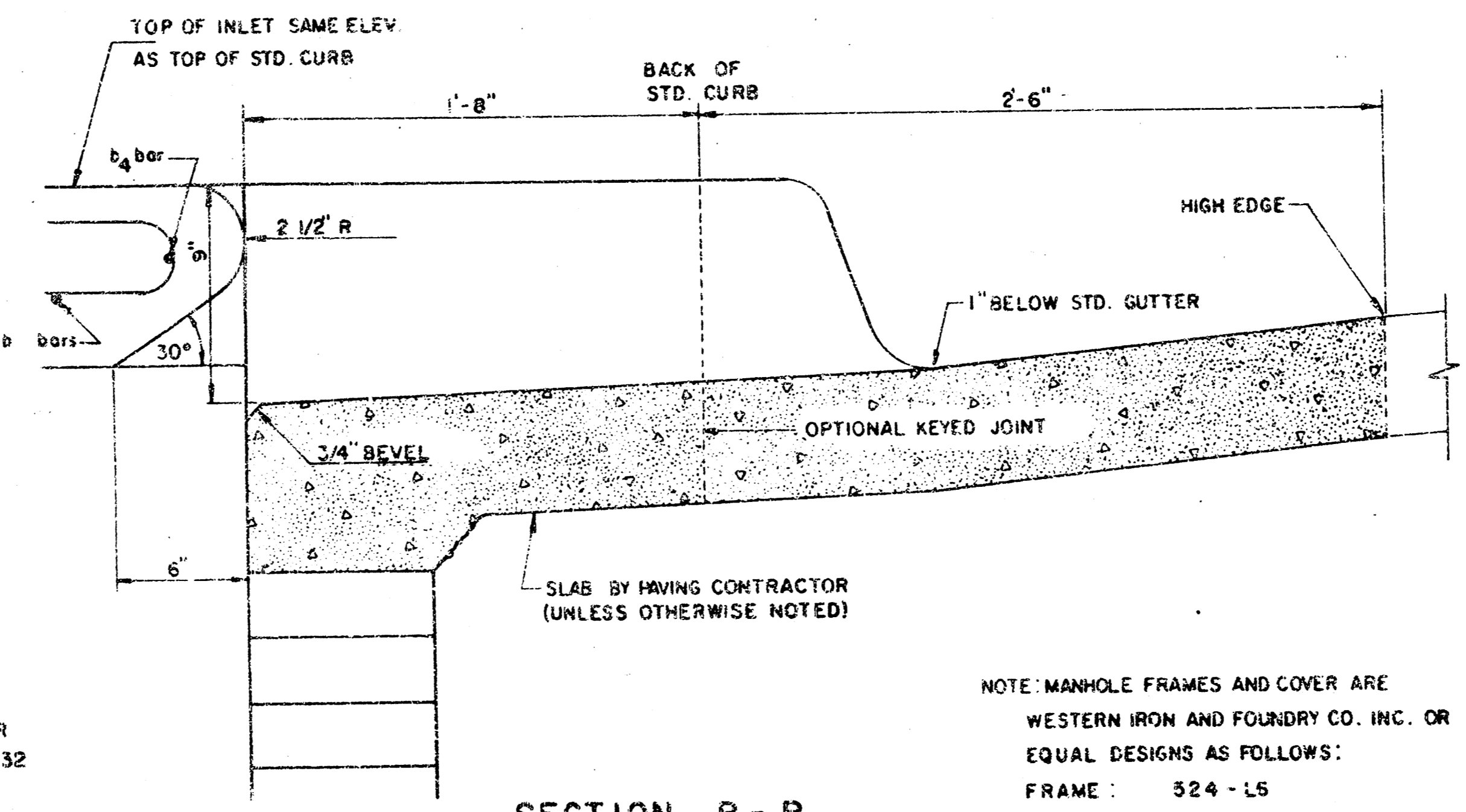
**BENDING DIAGRAM**



**MANHOLE COVER**  
(SCALE 1" = 6")  
WEIGHT = 170 LBS.



**SECTION C-C**  
(SCALE 1" = 1'-0")



**SECTION B-B**  
(SCALE 1" = 6")

NOTE: BRICK FOR INLET CONSTRUCTION SHALL CONFORM WITH THE LATEST REVISION OF THE AMERICAN SOCIETY FOR TESTING AND MATERIALS DESIGNATION C-32 FOR MANHOLE BRICK GRADE MS.

NOTE: MANHOLE FRAMES AND COVER ARE WESTERN IRON AND FOUNDRY CO. INC. OR EQUAL DESIGNS AS FOLLOWS:  
FRAME: 524 - L5  
FRAME (ALTERNATE): 500 A4  
COVER: 222 34 "NO58Y"

**HEDGECLIFF 2nd. ADDITION**

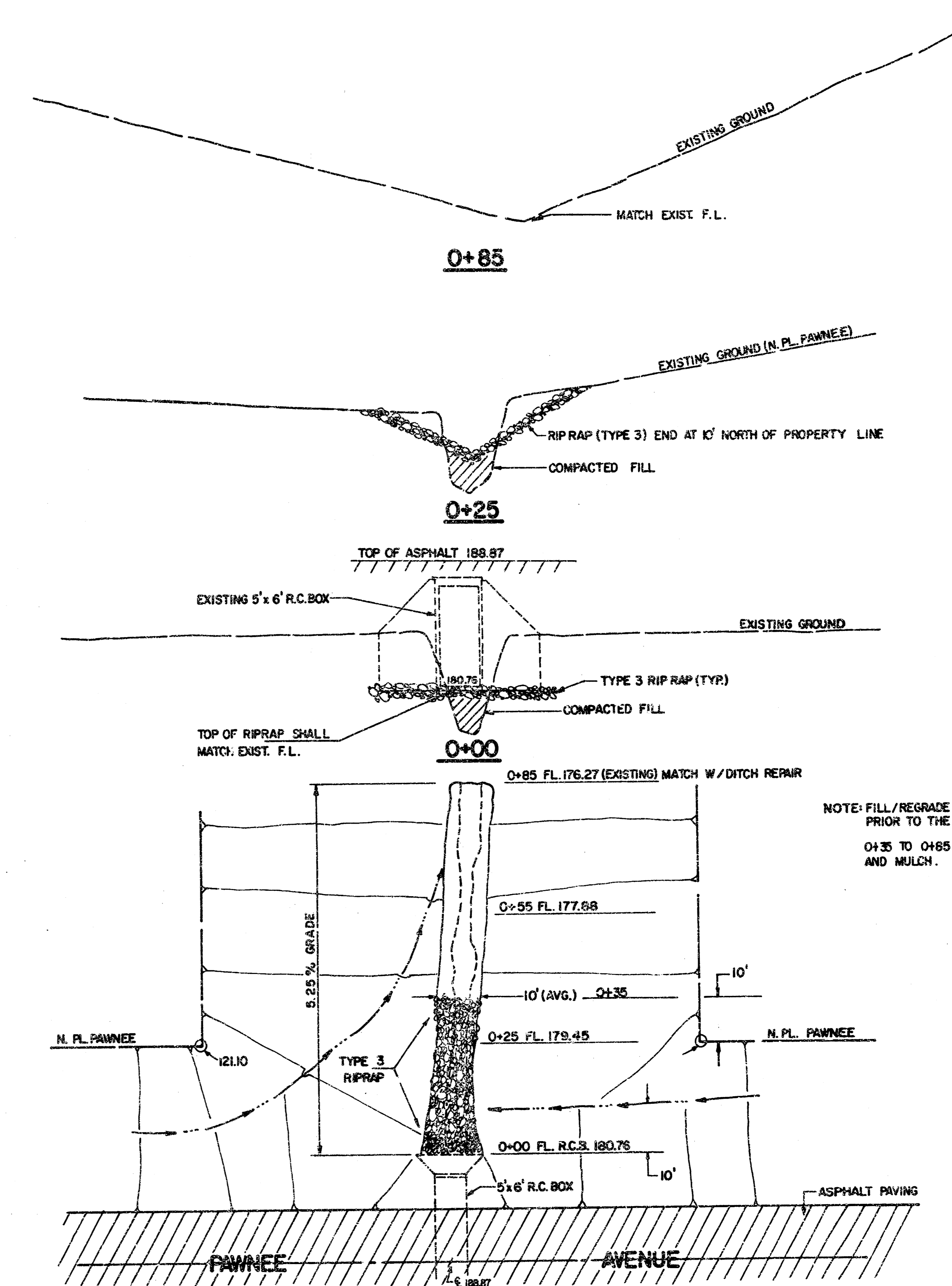
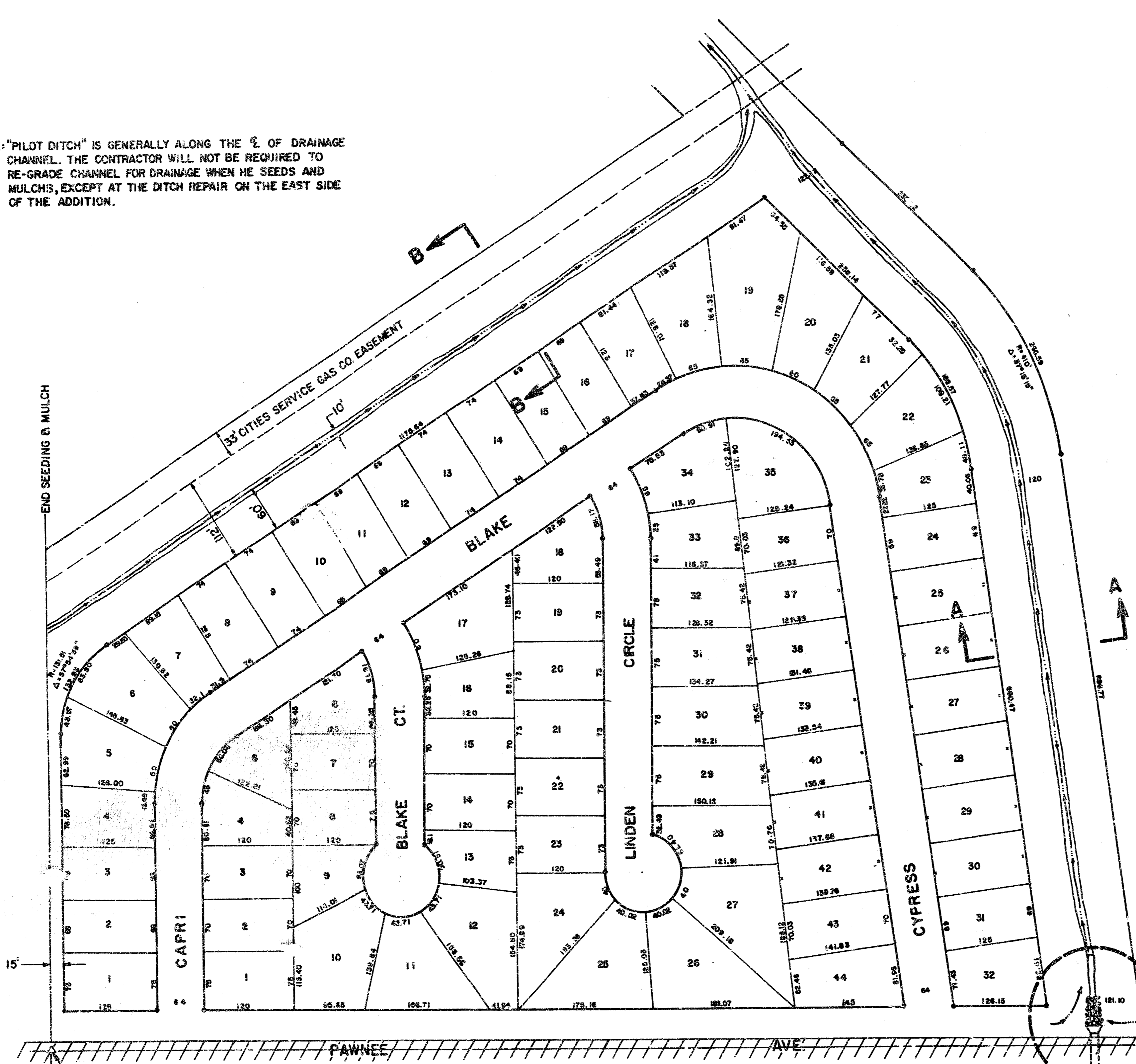
**DETAIL STANDARD TYPE IA CURB INLET**

**REIS & GOODNESS ENGINEERS**  
2180 WEST 21st STREET  
WICHITA, KANSAS 67205  
(316) 632-0263

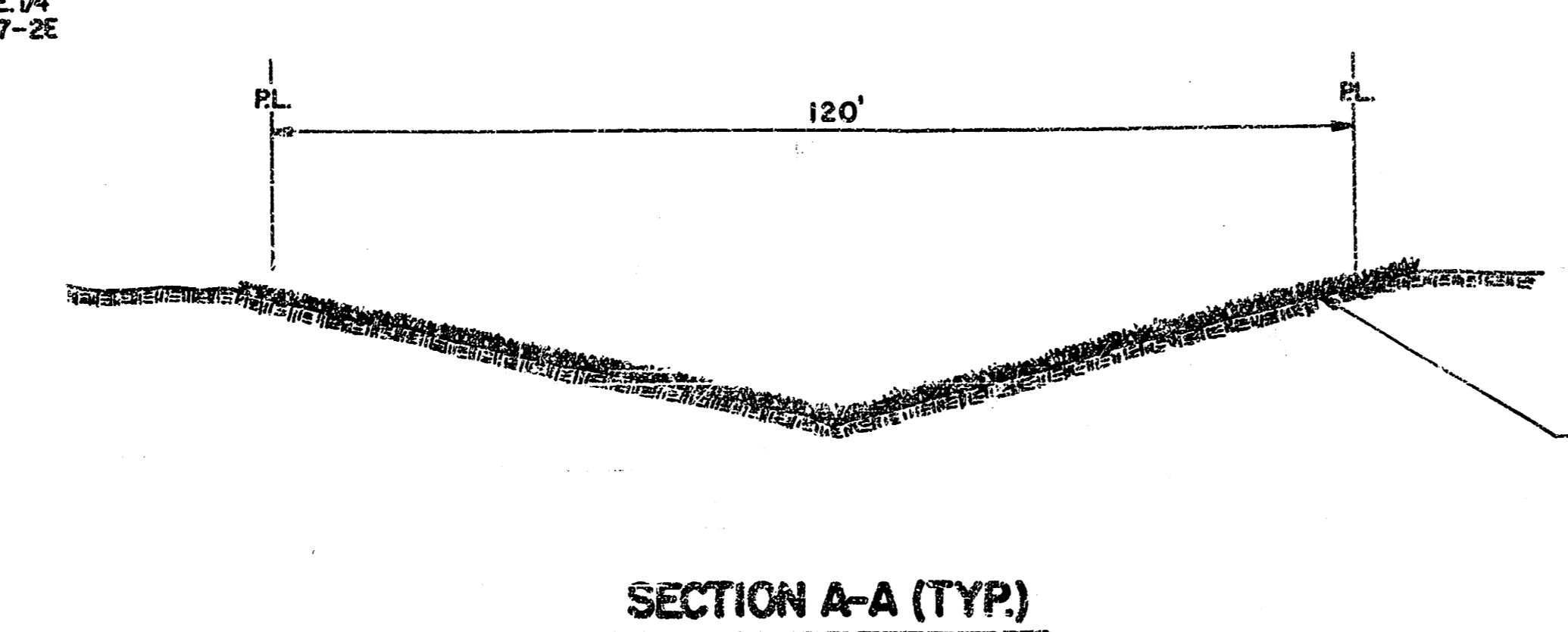
Designed by CITY OF WICHITA  
Date JUNE 1981

REV'D. 8-31-81  
Sht. 4 / 5

NOTE: "PILOT DITCH" IS GENERALLY ALONG THE 1/4 OF DRAINAGE CHANNEL. THE CONTRACTOR WILL NOT BE REQUIRED TO RE-GRADE CHANNEL FOR DRAINAGE WHEN HE SEEDS AND MULCHES, EXCEPT AT THE DITCH REPAIR ON THE EAST SIDE OF THE ADDITION.

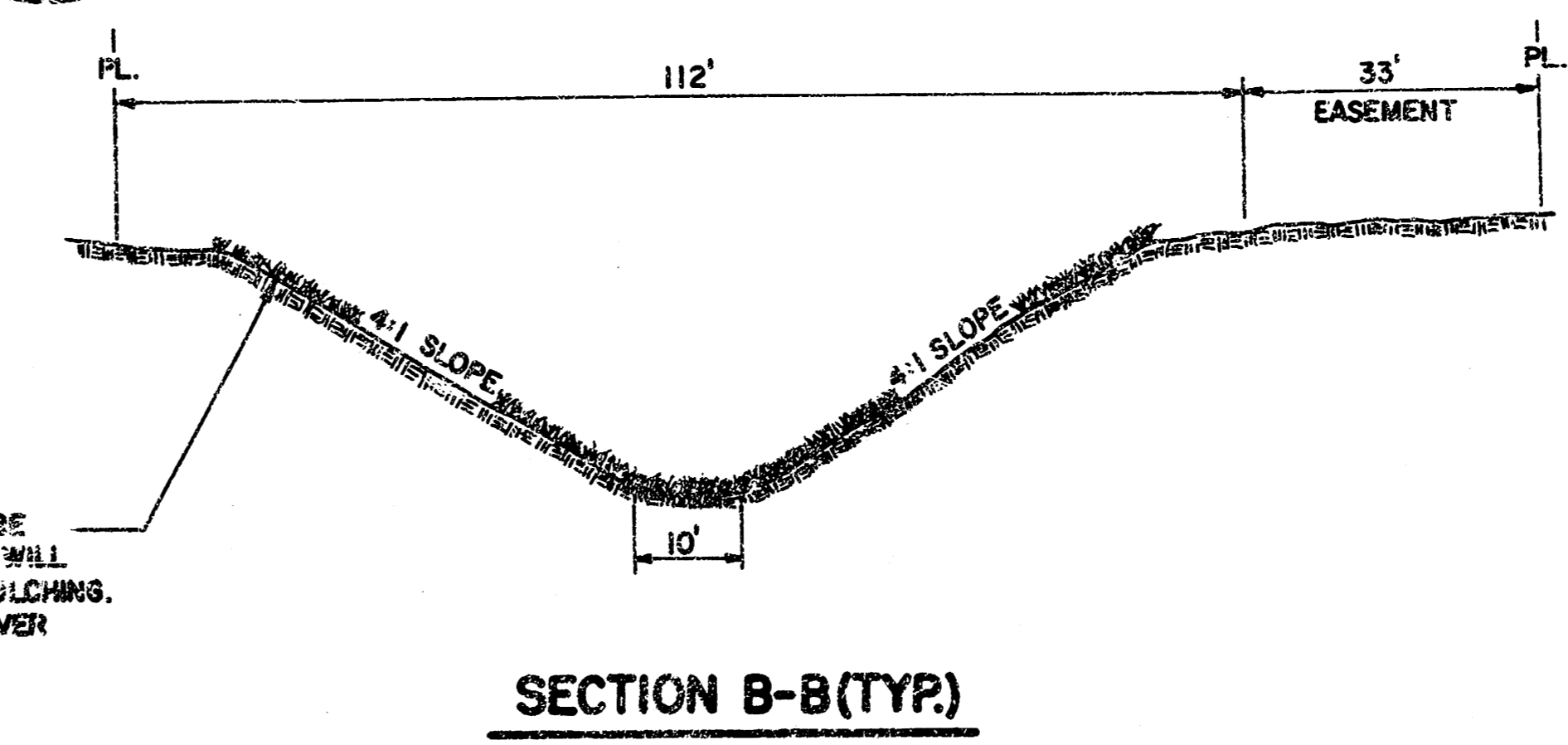


PLAN VIEW



SECTION A-A (TYP.)

NOTE: THE EXISTING VEGETATION SHALL BE STRIPPED, THE BANKS AND BOTTOM SHALL BE DRESSED PRIOR TO SEEDING AND MULCHING. (SEE SPECIFICATIONS FOR RATES, COVER MATERIAL, ETC.)



SECTION B-B (TYP.)