

STORM SEWERS IN FOLIAGE

PROJECT NO. 468-76-245-81071-000-000-001

S.W.S. NO. 225

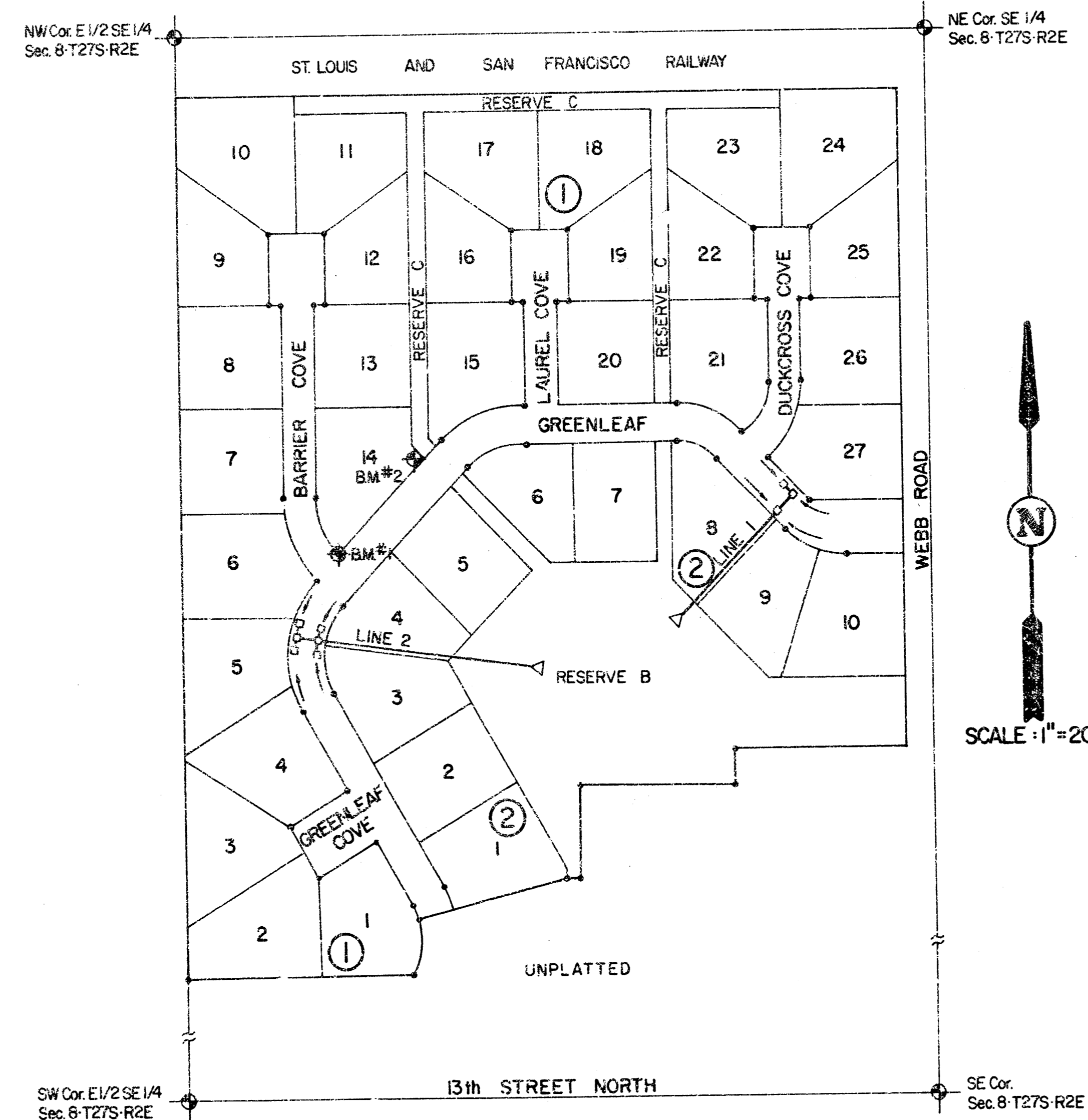
CITY OF WICHITA, KANSAS
R.W. BRUGGEMAN, CITY ENGINEER

GENERAL NOTES

1. Field Engineer shall take ties to all irons and thimbles in the project area before construction begins. Field Engineer shall replace all such irons and thimbles disturbed during construction.
2. The tops of inlets and manholes as noted on the plans may vary so as to meet proposed top of curb elevations or pavement elevations. The Field Engineer shall locate inlets and manholes with reference to proposed paving plans of the pertinent streets (available through Van Horn-Burard Stallings).
3. All metal pipes shall be helically corrugated pipe fully coated both inside and outside. The coating may be bituminous or polymeric as specified in AASHTO Designation: M240 - 78, Type B. All such coated corrugated pipe shall be smooth flow pipes for sizes 24" diameter and larger. All connections for these fully coated or fully paved and fully coated pipes shall be of factory watertight construction using hanger type coupler or equal.
4. All concrete shall be Standard Paving Mix unless otherwise noted.
5. The riprap for this project shall be type 3. The type 3 riprap shall be 12" riprap. The rock for riprap and gravel protection shall be hard, dense, durable and shall be reasonably well graded. The size range of rock used shall be a maximum of one cubic foot and a minimum of 1 1/2".
6. Contractor shall avoid uncovering existing water lines unless absolutely necessary. Uncovering shall be done only in the presence of a Water Department Engineer.
7. Contractor shall have the option of installing precast concrete type IA curb inlets in lieu of the brick type structure. See standard detail precast type IA curb inlet, dated August, 1979.
8. CONTRACTOR TO CONTACT DEVELOPER BEFORE REMOVING ANY TREES TO ALLOW THE DEVELOPER TO REMOVE THE TREES HIMSELF. CONTACT ALLEN BURKE AT WORK - 838-9301 OR HOME - 267-6818.

B.M. #1
Iron - Southwest Corner of
Lot 14, Block 1
Elev. = 192.77

B.M. #2
3/8" Spike - Southeast Corner
of Lot 14, Block 1
Elev. = 195.57



INDEX TO DRAWINGS

- PAGE 1: TITLE SHEET
- PAGE 2: LINE 1 & 1A
- PAGE 3: LINE 2 & 2A, 2B, 2C & 2D
- PAGE 4: TYPE IA CURB INLET

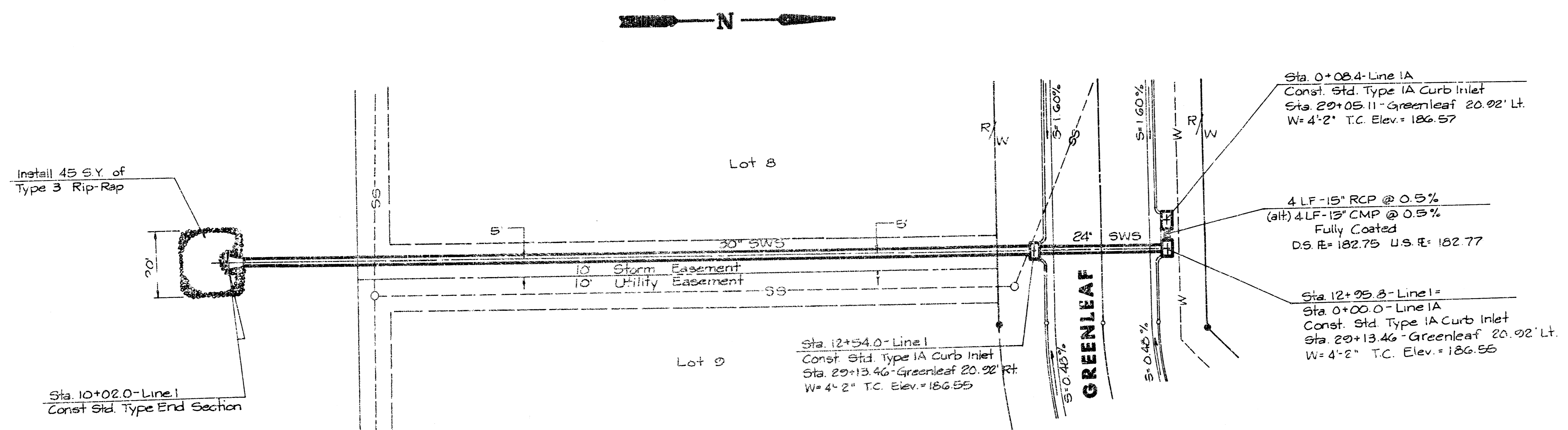


Van Doren Hazard Stallings
Architects - Engineers - Planners
Topeka - Wichita - Minneapolis - Kansas City

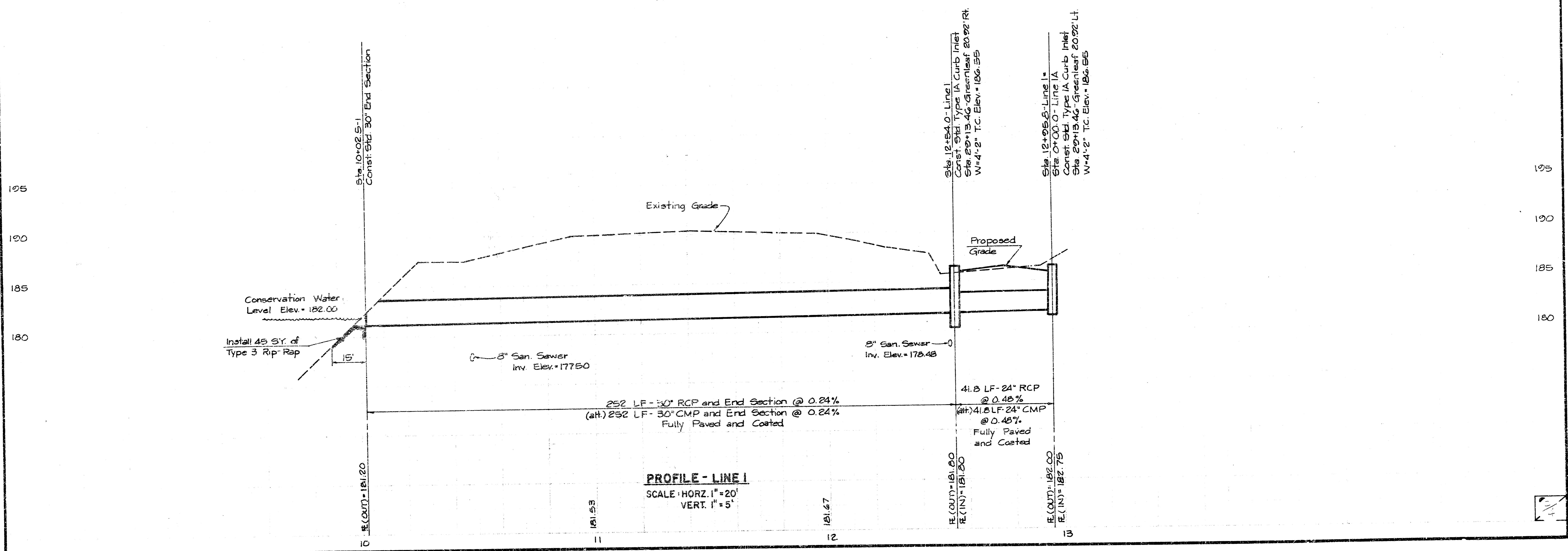
Sheet 1
of 4

FOLIAGE

PROJ. NO. 468 76 245 81071 000 000 001



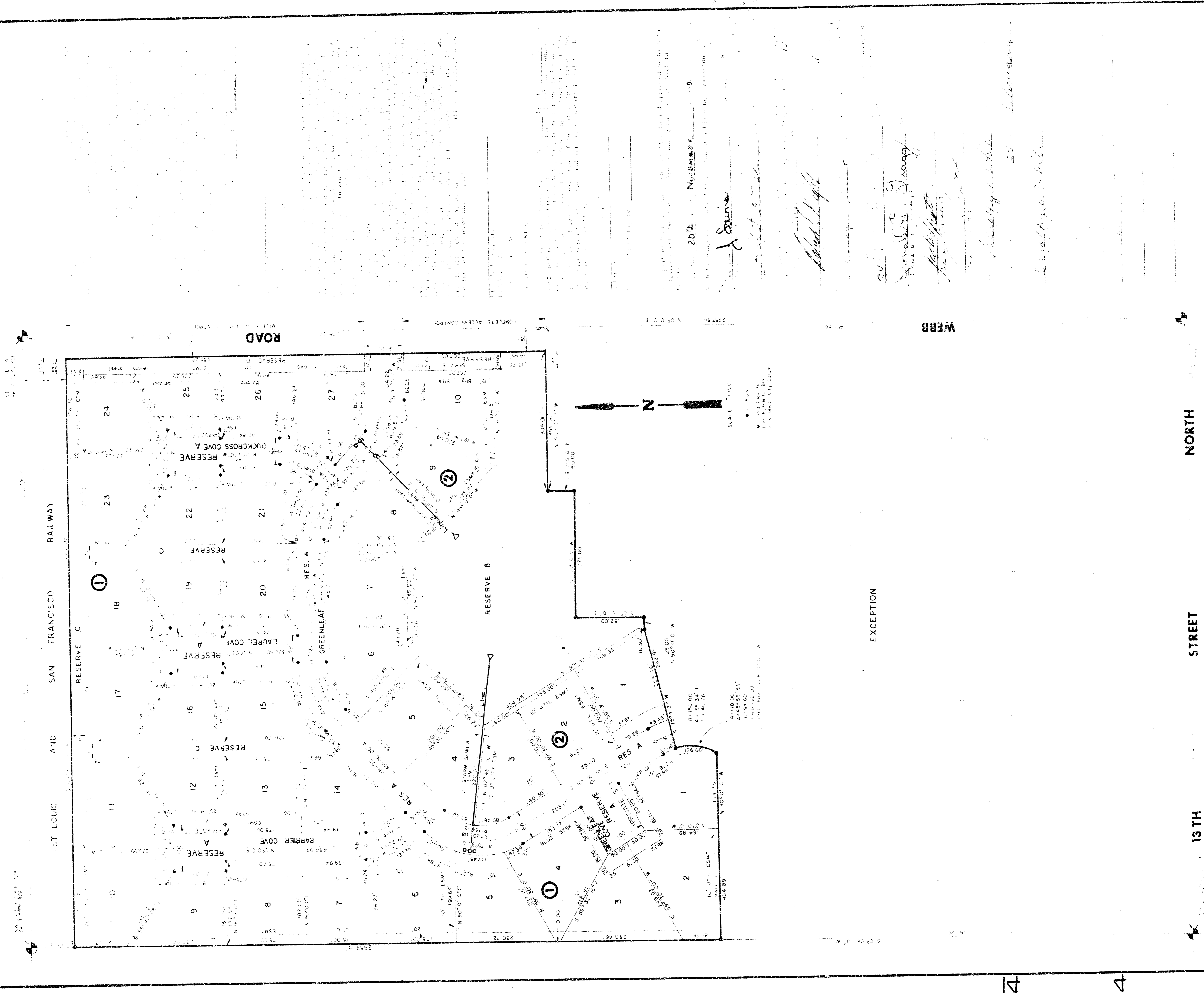
PLAN - LINE 1
SCALE: 1" = 20'



PROFILE - LINE 1
SCALE: HORIZ. 1" = 20'
VERT. 1" = 5'

FINAL PLAT OF FOLIAGE

AN ADDITION TO SEDGWICK COUNTY, KANSAS



ST. LOUIS AND SAN FRANCISCO RAILWAY
 WEBB ROAD
 13TH STREET
 NORTH

EXCEPTION

WEBB

20th Nov 1888

J. Seave

Wm. H. Webb

Wm. H. Webb

Wm. H. Webb

Wm. H. Webb

Wm. H. Webb

Sheet 5

FILMED FROM THE BEST AVAILABLE COPY.....