

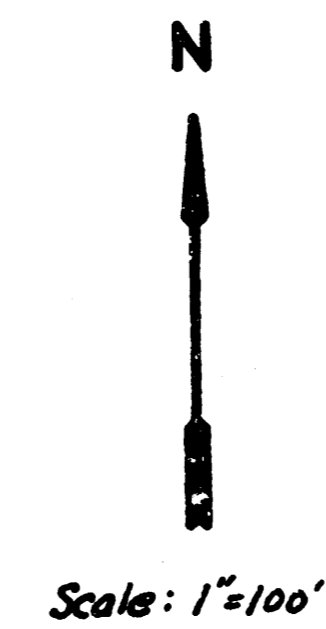
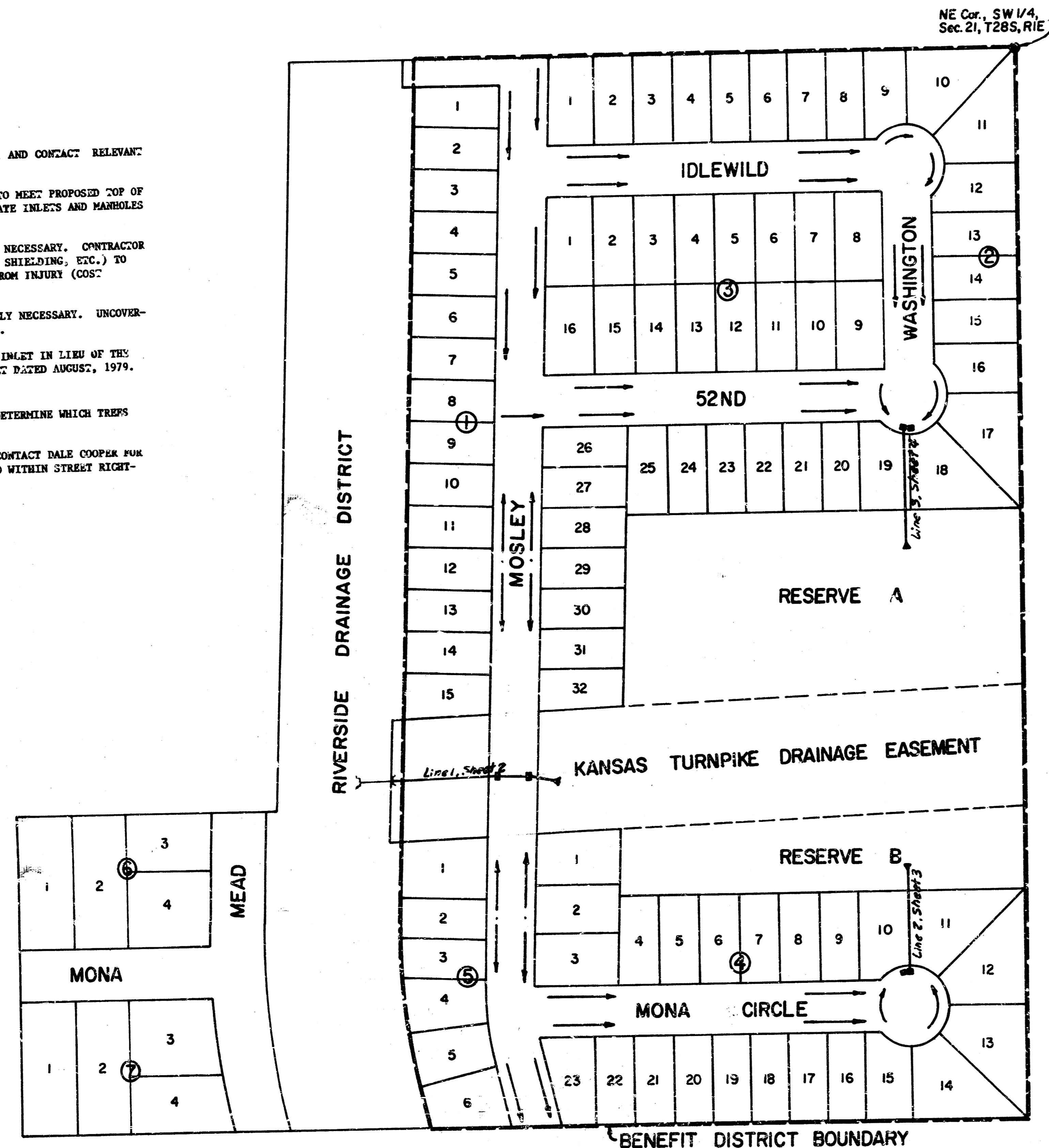
STORM WATER SEWER NO. 227

RIVERSIDE FOURTH ADDITION

NE Cor., SW 1/4,
Sec. 21, T28S, R1E

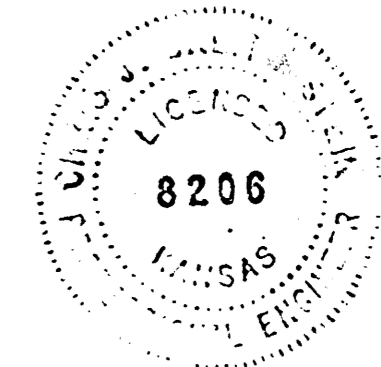
GENERAL NOTES

- 1.) CONTRACTOR SHALL COORDINATE WORK WITH PAVING AND SANITARY CONTRACTORS, AND CONTACT RELEVANT UTILITY COMPANIES AND OTHER AGENCIES INVOLVED WITH THIS PROJECT.
- 2.) THE TOPS OF INLETS AND MANHOLES AS NOTED ON THE PLANS MAY VARY SO AS TO MEET PROPOSED TOP OF CURB ELEVATIONS OR PAVEMENT ELEVATIONS. THE FIELD ENGINEER SHALL LOCATE INLETS AND MANHOLES WITH REFERENCE TO PROPOSED PAVING PLANS OF THE PERTINENT STREETS.
- 3.) THE CONTRACTOR SHALL AVOID REMOVING ANY TREES UNLESS IT IS ABSOLUTELY NECESSARY. CONTRACTOR IS TO TAKE WHATEVER PRECAUTION THE ENGINEER DEEMS NECESSARY (SMOKING, SHIELDING, ETC.) TO INSURE THAT THE TREES IN THE VICINITY OF CONSTRUCTION ARE PROTECTED FROM INJURY (COST INCIDENTAL TO PROJECT).
- 4.) CONTRACTOR SHALL AVOID UNCOVERING EXISTING WATERLINES UNLESS ABSOLUTELY NECESSARY. UNCOVERING SHALL BE DONE ONLY IN THE PRESENCE OF A WATER DEPARTMENT ENGINEER.
- 5.) CONTRACTOR SHALL HAVE THE OPTION OF INSTALLING PRE-CAST TYPE 1A CURB INLET IN LIEU OF THE BRICK TYPE STRUCTURE. SEE STANDARD DETAIL PRE-CAST TYPE 1A CURB INLET DATED AUGUST, 1979.
- 6.) CONTRACTOR TO CONTACT DALE COOPER, ROBBINS REALTY, AT 522-1587, TO DETERMINE WHICH TREES WITHIN POND SITE ARE TO BE SAVED AND WHICH TREES CAN BE REMOVED.
- 7.) ALL EXCESS EXCAVATED MATERIAL IS TO REMAIN ON SITE. CONTRACTOR TO CONTACT DALE COOPER FOR LOCATION TO DISPOSE OF EXCESS MATERIAL. NO MATERIAL IS TO BE SPREAD WITHIN STREET RIGHT-OF-WAY.



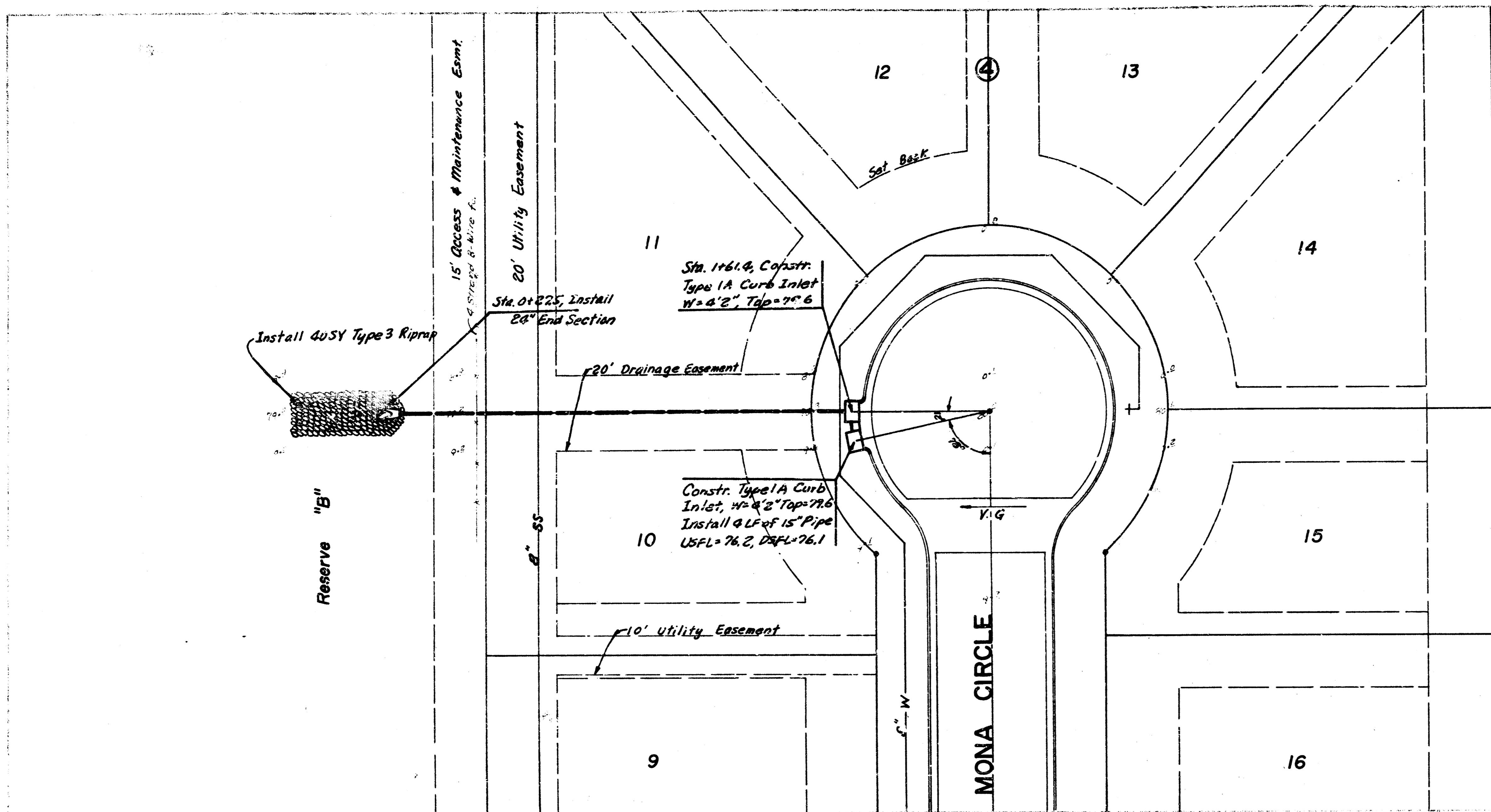
Sheet No.	Index
1	Cover Sheet
2-4	SWS Plan & Profile
5	Detention Reservoir
6	Type IA Inlet
7	Cross Sections

THE CONTRACTOR SHALL BE RESPONSIBLE FOR PRESERVING PROPERTY LINES. THE CONTRACTOR SHALL BE REQUIRED TO RE-ESTABLISH ANY PROPERTY LINES WHICH ARE DAMAGED OR DESTROYED BY HIS CONSTRUCTION OPERATIONS. SUCH PROPERTY LINES RE-ESTABLISHED BY A LICENSED LAND SURVEYOR OR A LICENSED PROFESSIONAL ENGINEER IN ACCORDANCE WITH STATE LAWS.

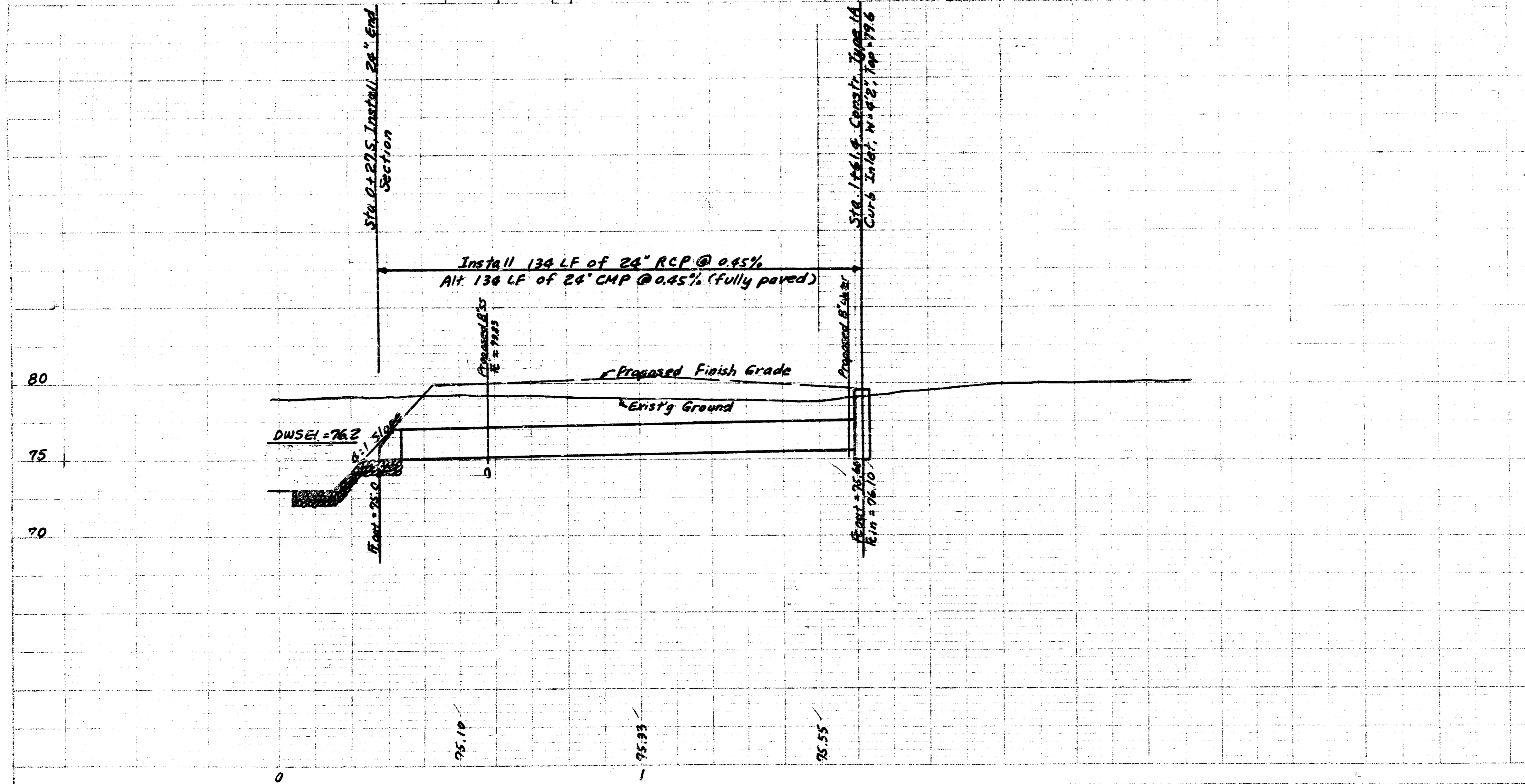


**R.W. BRUGGEMAN, DIRECTOR OF ENGINEERING/
CITY ENGINEER**
CITY OF WICHITA, KANSAS
PROJECT NO. 468 76 245 81088 000 000 001
DATE: _____

142
2/82
MSP
MSP/18



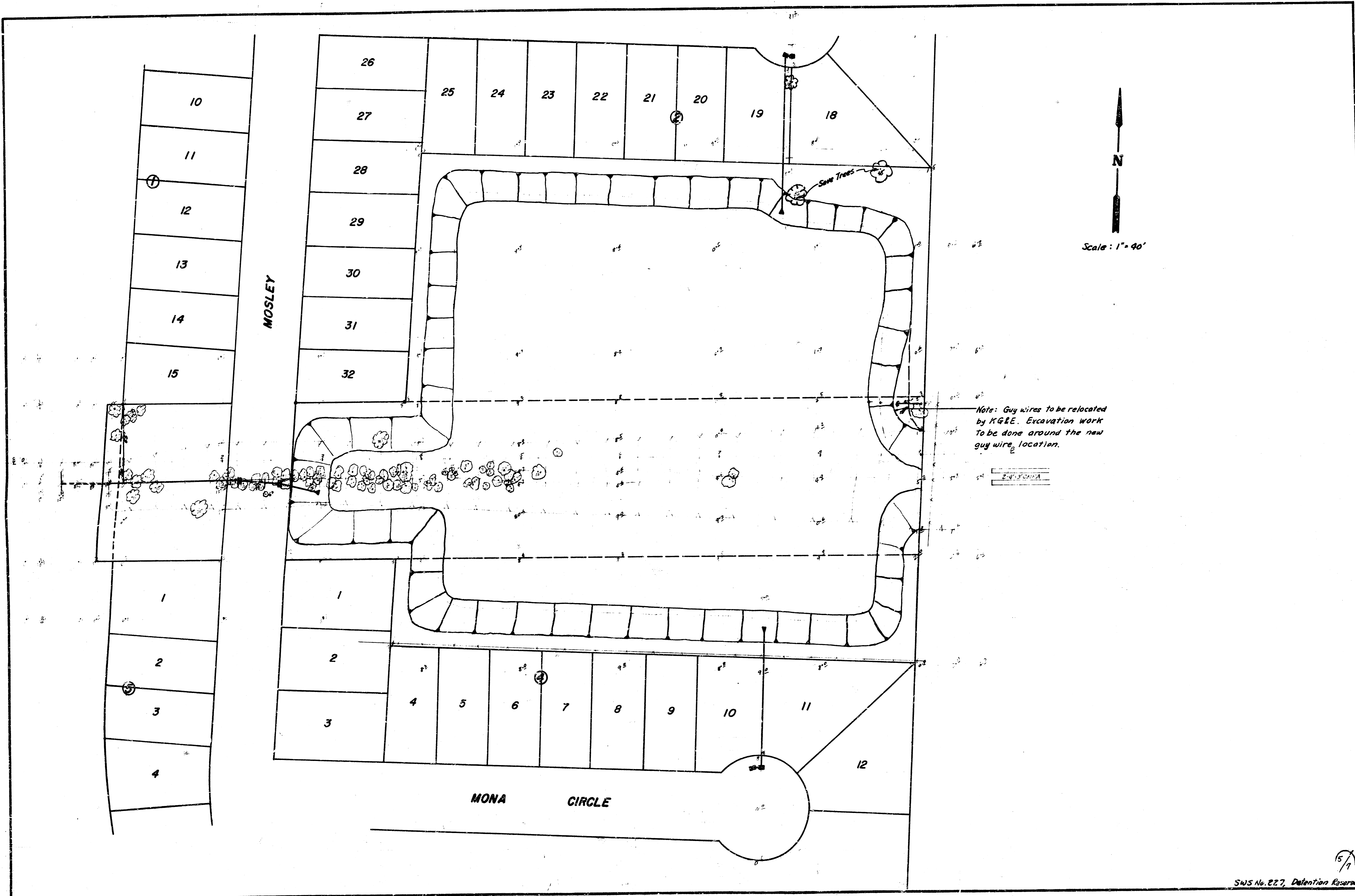
Scale: Plan 1" = 20'
Profile 1" = 20' Horiz.
1" = 5' Vert.



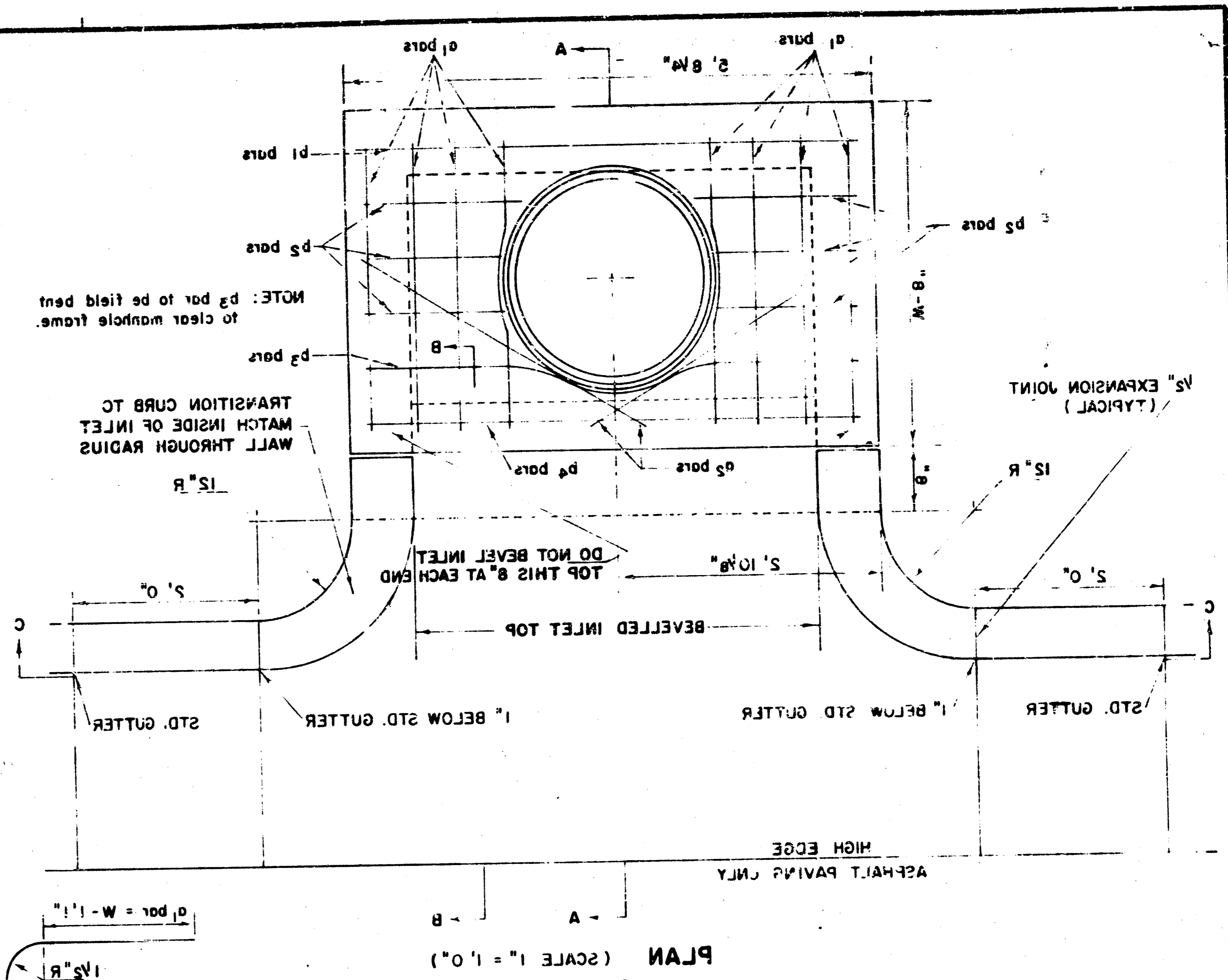
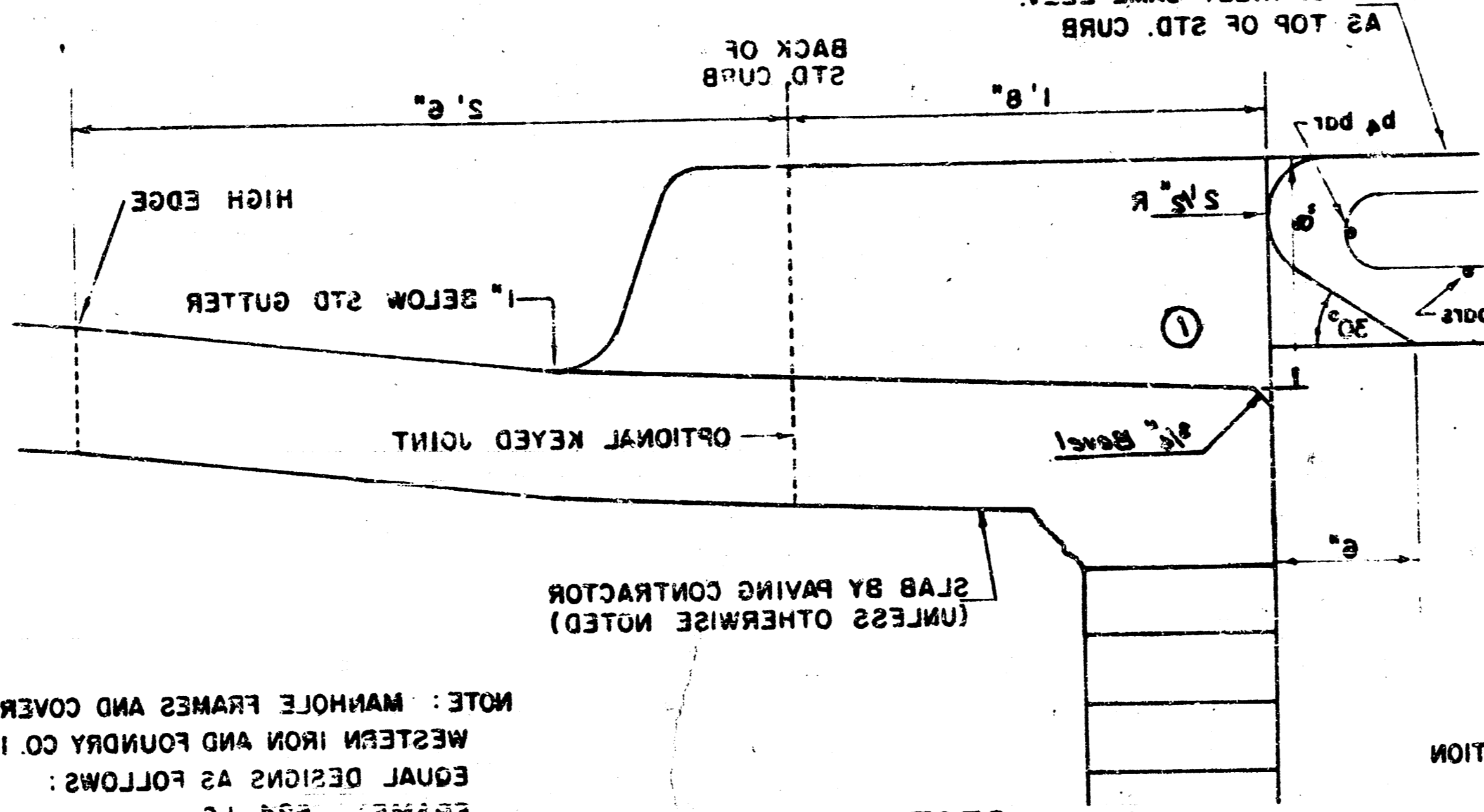
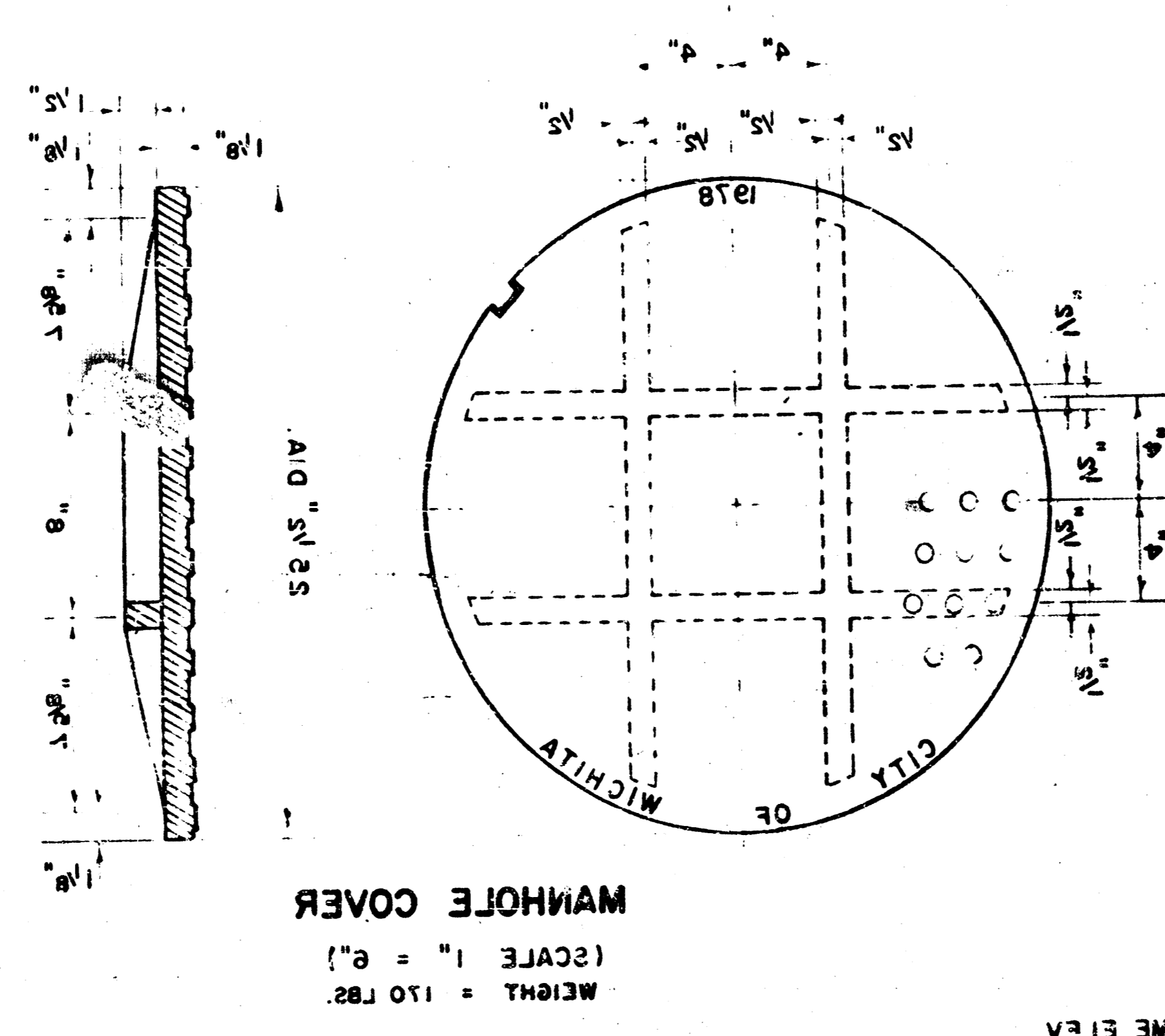
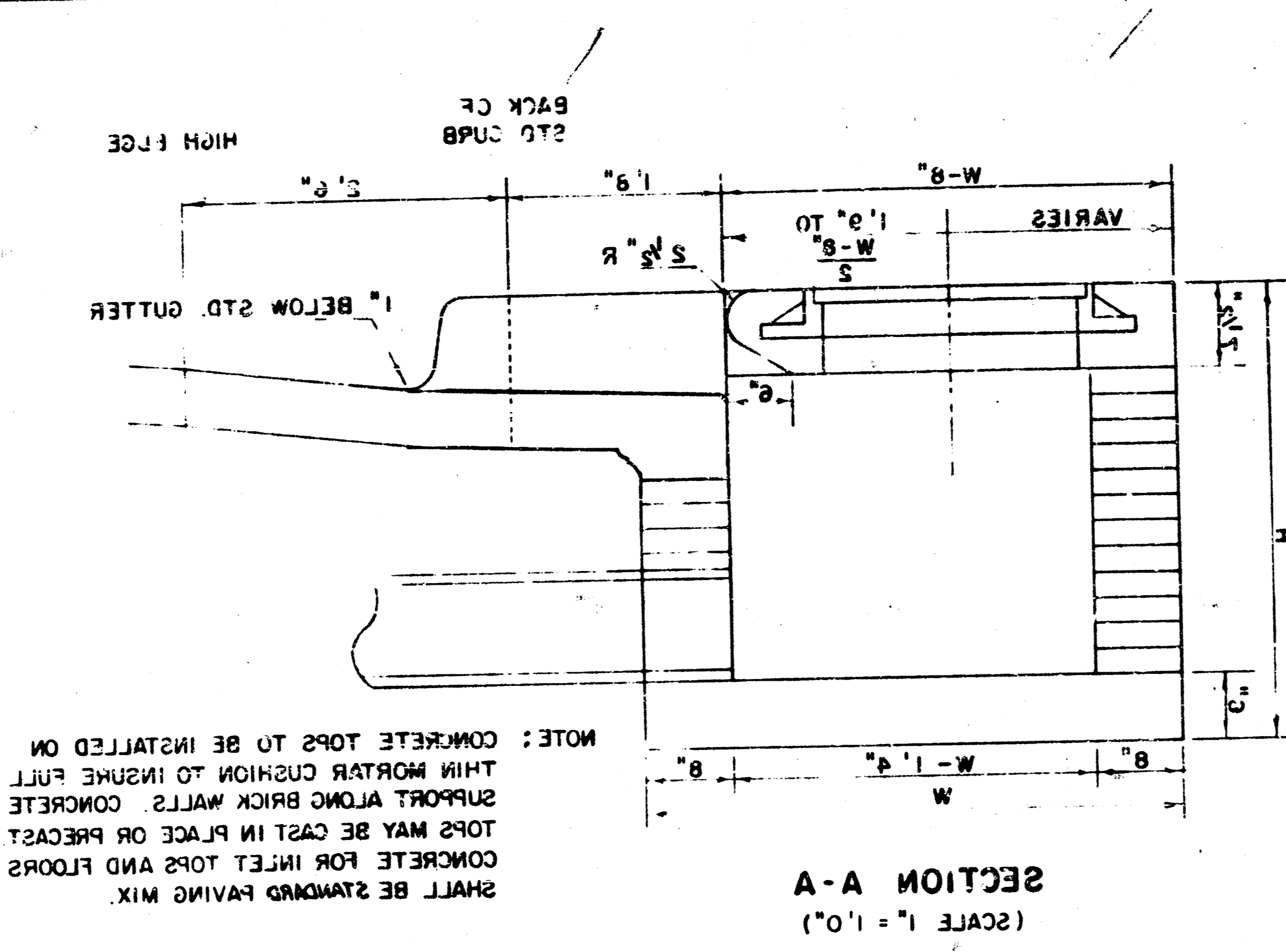
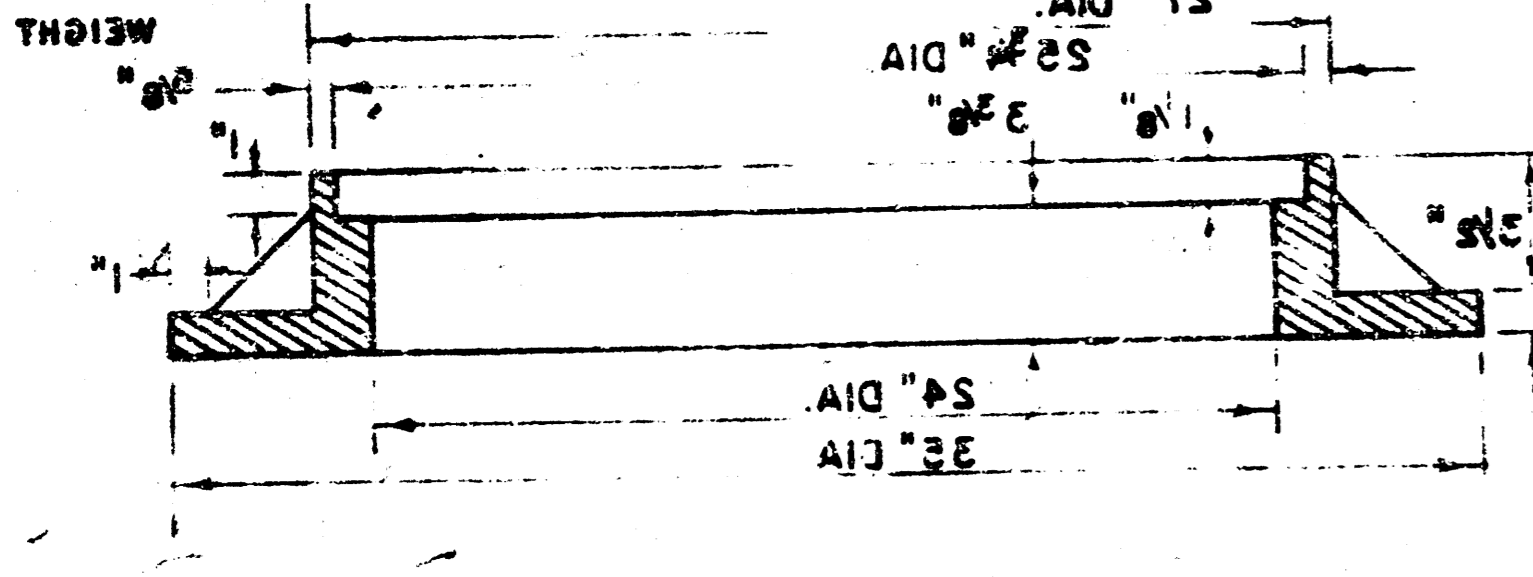
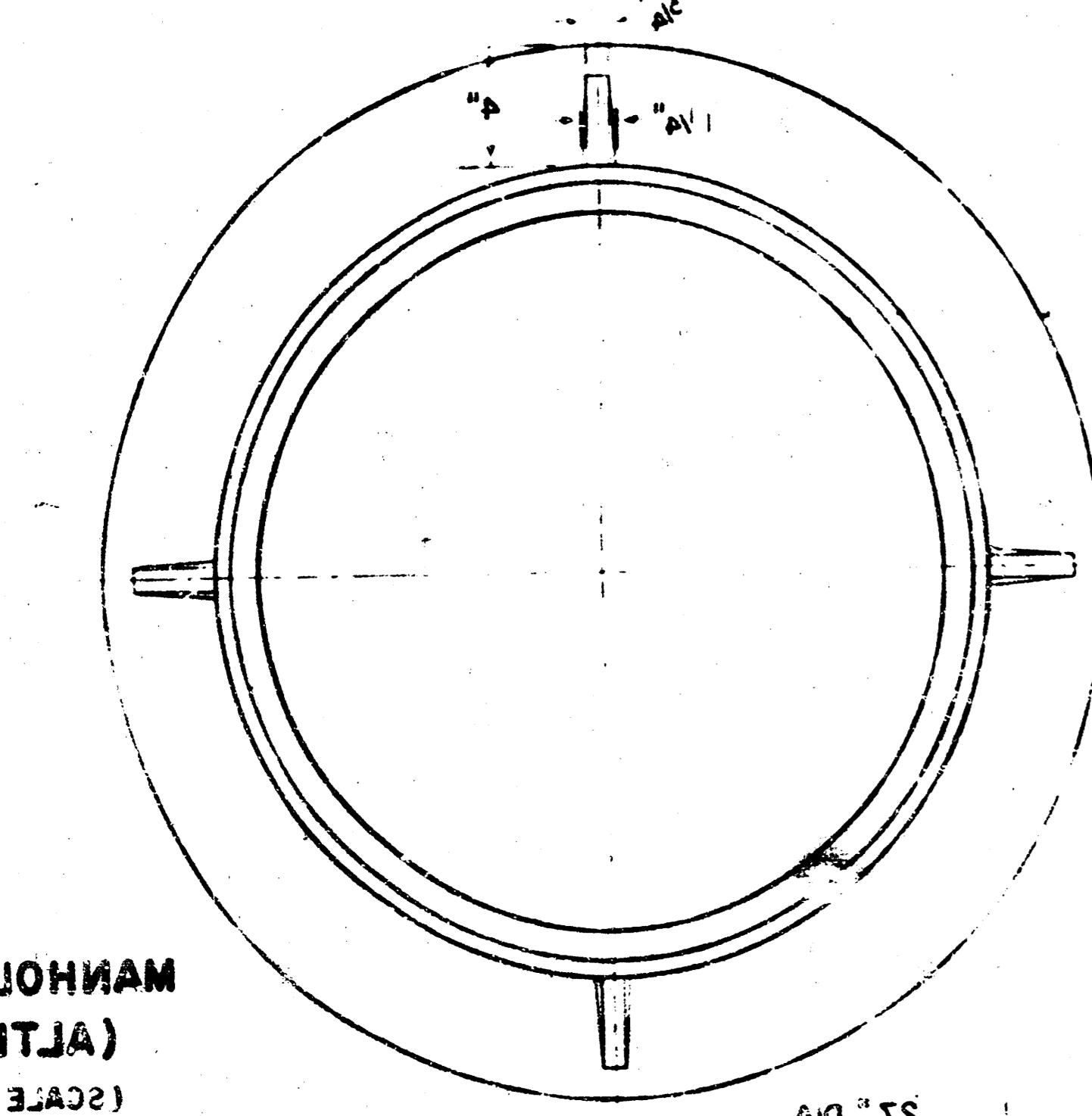
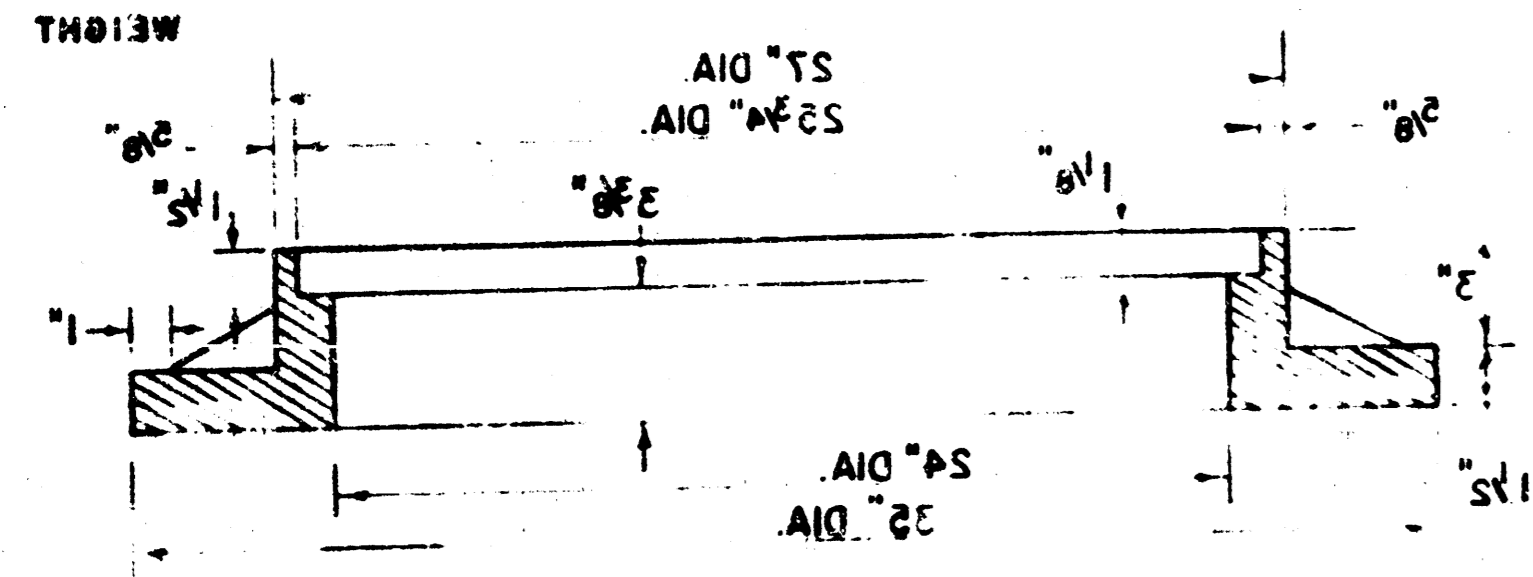
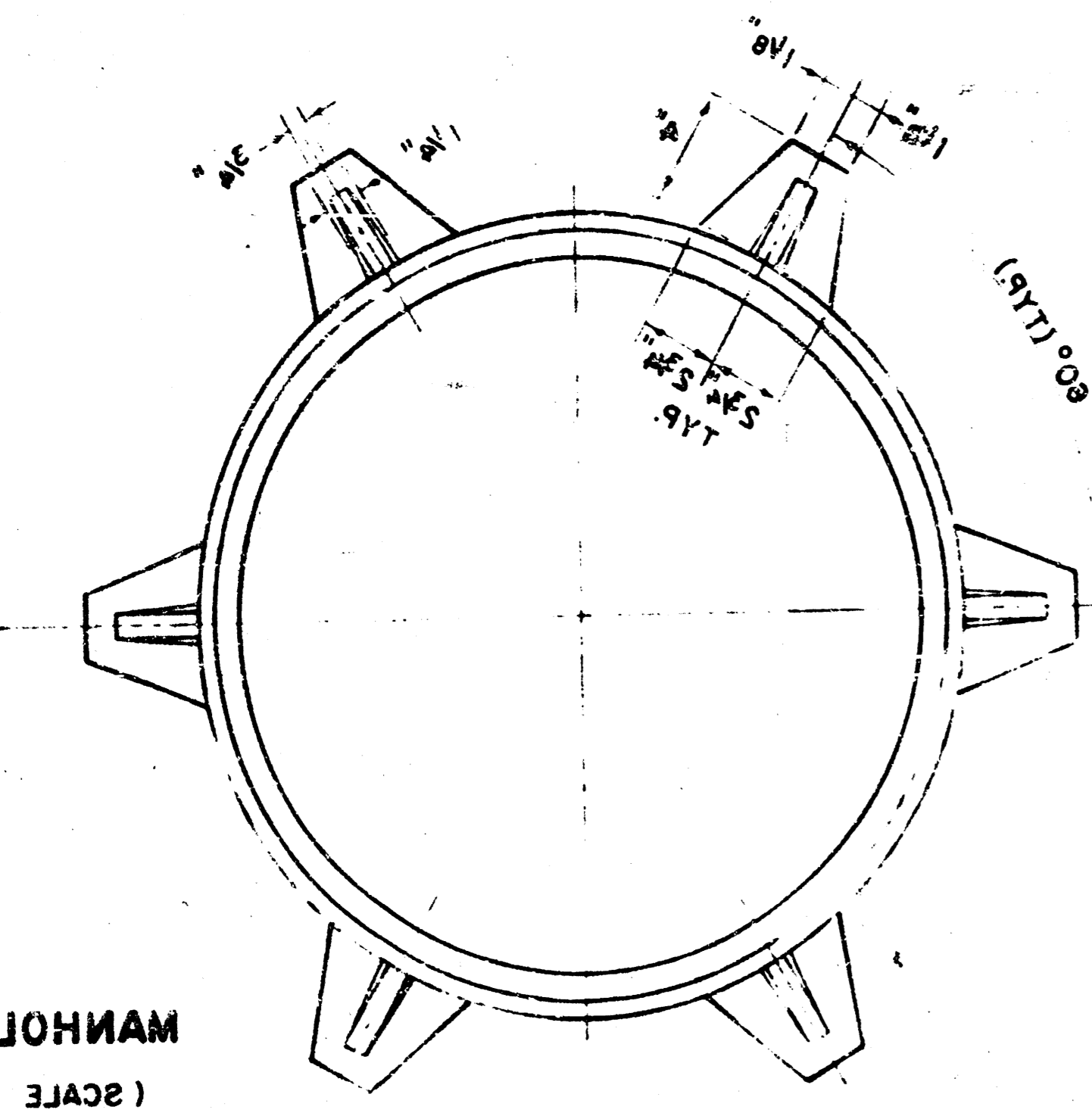
SWS No. 227, Line 2

3/7

FILMED FROM THE BEST AVAILABLE COPY...



R.W. BRUGEMAN, DIRECTOR OF ENGINEERING
 CITY ENGINEER
 CITY OF WICHITA, KANSAS
 DETAIL STANDARD TYPE IA CURB INLET
 JUNE, 1981



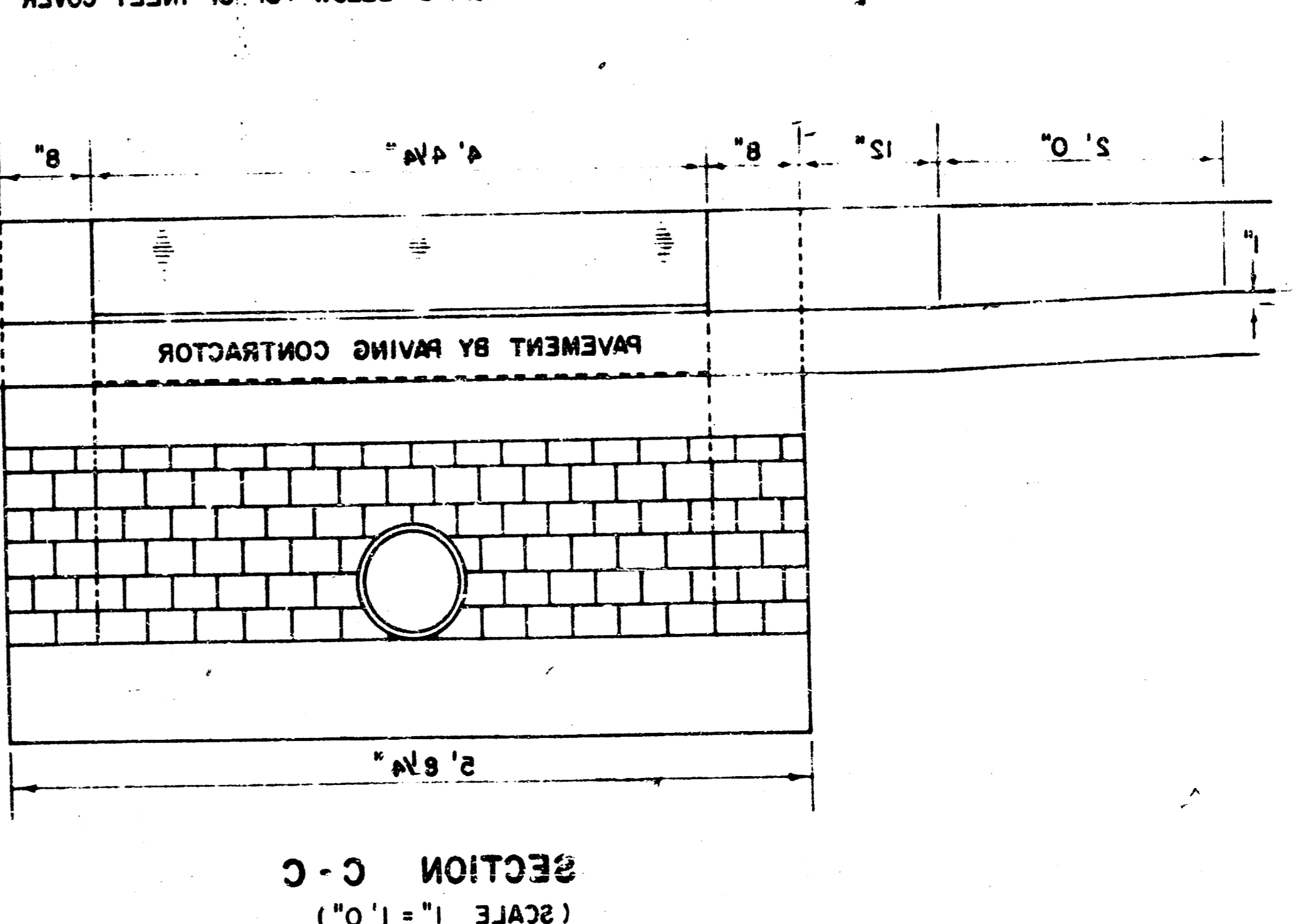
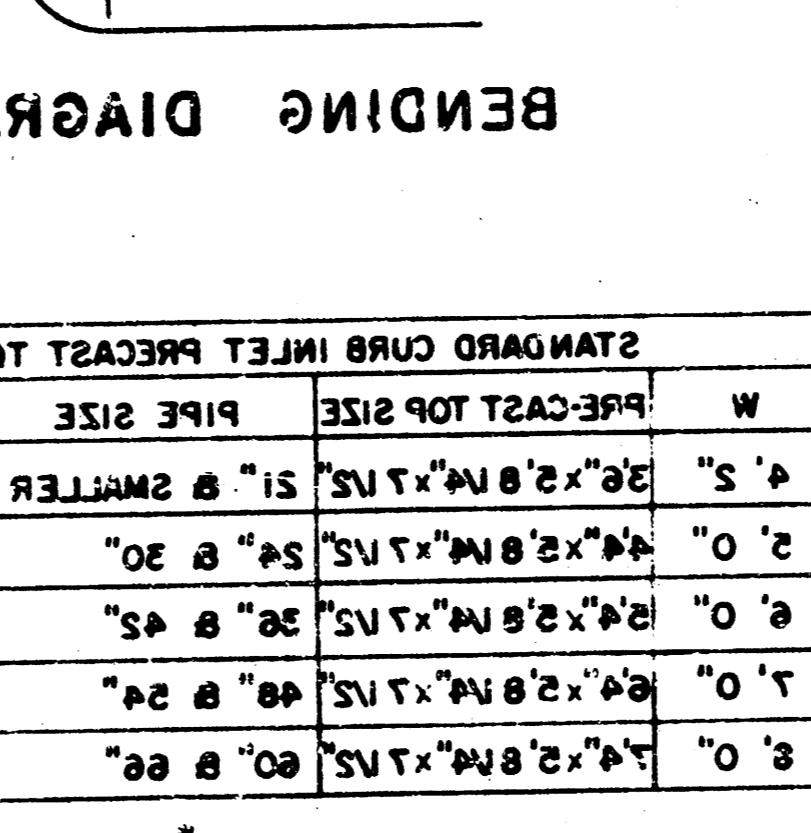
STANDARD CURB INLET PRECAST TOPS

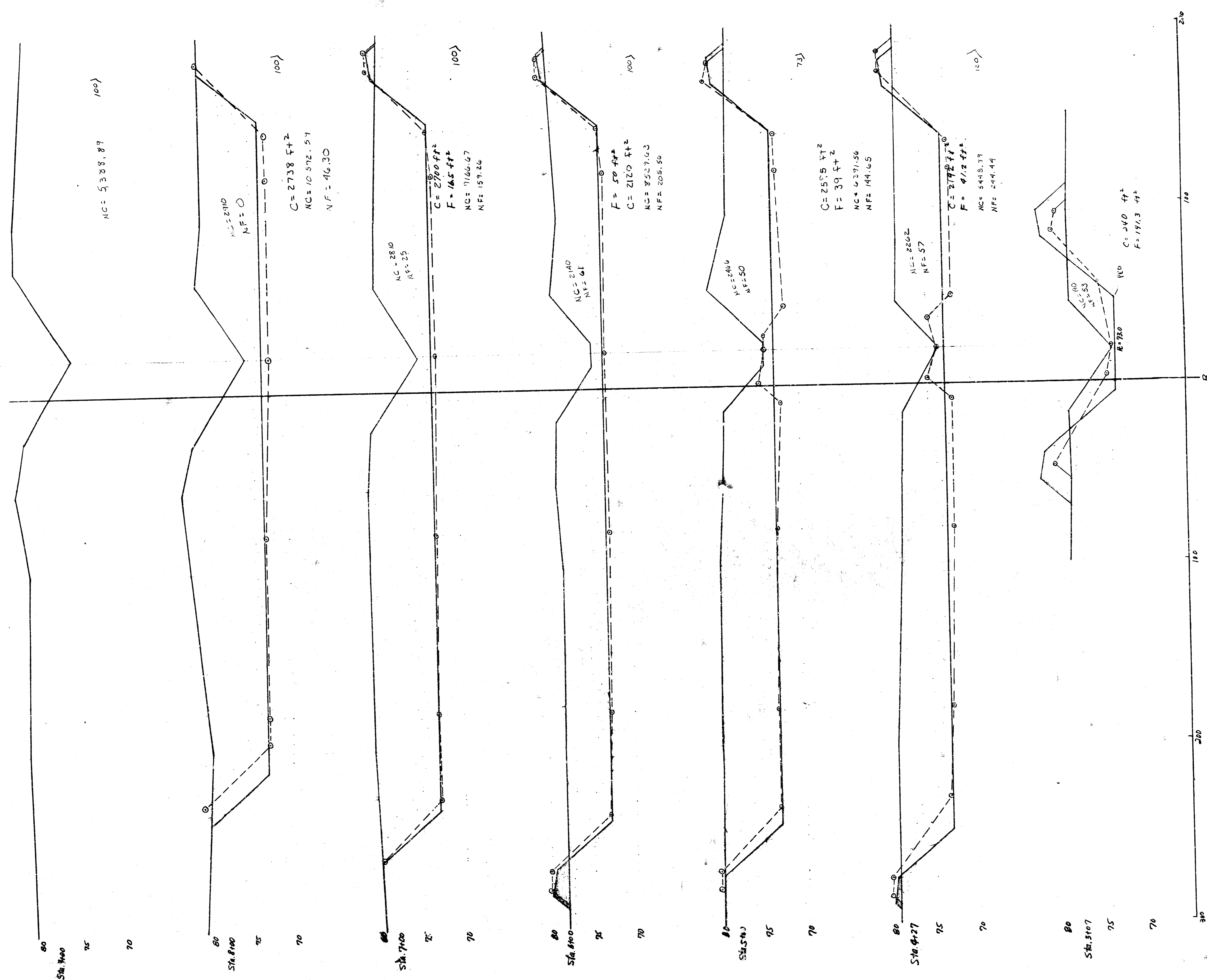
W	PRECAST TOP SIZE	PIPE SIZE	CU. YD. CONC.	GROSS VOLUME
4.5"	36"x36"x1.75"	31" & SMALLER	0.46 *	
5.0"	48"x48"x1.75"	34" & 30"	0.52 *	
6.0"	36"x36"x1.75"	38" & 42"	0.71 *	
7.0"	48"x48"x1.75"	48" & 54"	0.84 *	
8.0"	36"x36"x1.75"	60" & 66"	0.97 *	

STEEL SCHEDULE

BAR NUMBER	SIZE	WT.	QTY.	WT.
1	1/2" x 3/4"	1.10	11	12.10
2	1/2" x 3/4"	1.10	11	12.10
3	1/2" x 3/4"	1.10	11	12.10
4	1/2" x 3/4"	1.10	11	12.10
5	1/2" x 3/4"	1.10	11	12.10
6	1/2" x 3/4"	1.10	11	12.10
7	1/2" x 3/4"	1.10	11	12.10
8	1/2" x 3/4"	1.10	11	12.10
9	1/2" x 3/4"	1.10	11	12.10
10	1/2" x 3/4"	1.10	11	12.10
11	1/2" x 3/4"	1.10	11	12.10
12	1/2" x 3/4"	1.10	11	12.10
13	1/2" x 3/4"	1.10	11	12.10
14	1/2" x 3/4"	1.10	11	12.10
15	1/2" x 3/4"	1.10	11	12.10
16	1/2" x 3/4"	1.10	11	12.10
17	1/2" x 3/4"	1.10	11	12.10
18	1/2" x 3/4"	1.10	11	12.10
19	1/2" x 3/4"	1.10	11	12.10
20	1/2" x 3/4"	1.10	11	12.10
21	1/2" x 3/4"	1.10	11	12.10
22	1/2" x 3/4"	1.10	11	12.10
23	1/2" x 3/4"	1.10	11	12.10
24	1/2" x 3/4"	1.10	11	12.10
25	1/2" x 3/4"	1.10	11	12.10
26	1/2" x 3/4"	1.10	11	12.10
27	1/2" x 3/4"	1.10	11	12.10
28	1/2" x 3/4"	1.10	11	12.10
29	1/2" x 3/4"	1.10	11	12.10
30	1/2" x 3/4"	1.10	11	12.10
31	1/2" x 3/4"	1.10	11	12.10
32	1/2" x 3/4"	1.10	11	12.10
33	1/2" x 3/4"	1.10	11	12.10
34	1/2" x 3/4"	1.10	11	12.10
35	1/2" x 3/4"	1.10	11	12.10
36	1/2" x 3/4"	1.10	11	12.10
37	1/2" x 3/4"	1.10	11	12.10
38	1/2" x 3/4"	1.10	11	12.10
39	1/2" x 3/4"	1.10	11	12.10
40	1/2" x 3/4"	1.10	11	12.10
41	1/2" x 3/4"	1.10	11	12.10
42	1/2" x 3/4"	1.10	11	12.10
43	1/2" x 3/4"	1.10	11	12.10
44	1/2" x 3/4"	1.10	11	12.10
45	1/2" x 3/4"	1.10	11	12.10
46	1/2" x 3/4"	1.10	11	12.10
47	1/2" x 3/4"	1.10	11	12.10
48	1/2" x 3/4"	1.10	11	12.10
49	1/2" x 3/4"	1.10	11	12.10
50	1/2" x 3/4"	1.10	11	12.10
51	1/2" x 3/4"	1.10	11	12.10
52	1/2" x 3/4"	1.10	11	12.10
53	1/2" x 3/4"	1.10	11	12.10
54	1/2" x 3/4"	1.10	11	12.10
55	1/2" x 3/4"	1.10	11	12.10
56	1/2" x 3/4"	1.10	11	12.10
57	1/2" x 3/4"	1.10	11	12.10
58	1/2" x 3/4"	1.10	11	12.10
59	1/2" x 3/4"	1.10	11	12.10
60	1/2" x 3/4"	1.10	11	12.10
61	1/2" x 3/4"	1.10	11	12.10
62	1/2" x 3/4"	1.10	11	12.10
63	1/2" x 3/4"	1.10	11	12.10
64	1/2" x 3/4"	1.10	11	12.10
65	1/2" x 3/4"	1.10	11	12.10
66	1/2" x 3/4"	1.10	11	12.10
67	1/2" x 3/4"	1.10	11	12.10
68	1/2" x 3/4"	1.10	11	12.10
69	1/2" x 3/4"	1.10	11	12.10
70	1/2" x 3/4"	1.10	11	12.10
71	1/2" x 3/4"	1.10	11	12.10
72	1/2" x 3/4"	1.10	11	12.10
73	1/2" x 3/4"	1.10	11	12.10
74	1/2" x 3/4"	1.10	11	12.10
75	1/2" x 3/4"	1.10	11	12.10
76	1/2" x 3/4"	1.10	11	12.10
77	1/2" x 3/4"	1.10	11	12.10
78	1/2" x 3/4"	1.10	11	12.10
79	1/2" x 3/4"	1.10	11	12.10
80	1/2" x 3/4"	1.10	11	12.10
81	1/2" x 3/4"	1.10	11	12.10
82	1/2" x 3/4"	1.10	11	12.10
83	1/2" x 3/4"	1.10	11	12.10
84	1/2" x 3/4"	1.10	11	12.10
85	1/2" x 3/4"	1.10	11	12.10
86	1/2" x 3/4"	1.10	11	12.10
87	1/2" x 3/4"	1.10	11	12.10
88	1/2" x 3/4"	1.10	11	12.10
89	1/2" x 3/4"	1.10	11	12.10
90	1/2" x 3/4"	1.10	11	12.10
91	1/2" x 3/4"	1.10	11	12.10
92	1/2" x 3/4"	1.10	11	12.10
93	1/2" x 3/4"	1.10	11	12.10
94	1/2" x 3/4"	1.10	11	12.10
95	1/2" x 3/4"	1.10	11	12.10
96	1/2" x 3/4"	1.10	11	12.10
97	1/2" x 3/4"	1.10	11	12.10
98	1/2" x 3/4"	1.10	11	12.10
99	1/2" x 3/4"	1.10	11	12.10
100	1/2" x 3/4"	1.10	11	12.10

NOTE: #5 BARS TO BE PLACED APPROX. 5" BELOW TOP OF INLET COVER





Total Cut 44,000 C.Y.
 Total Fill 1,246 C.Y.
 $NC = 45518.23$
 $NF = 800.21$

27