

STORM WATER SEWER NO. 228

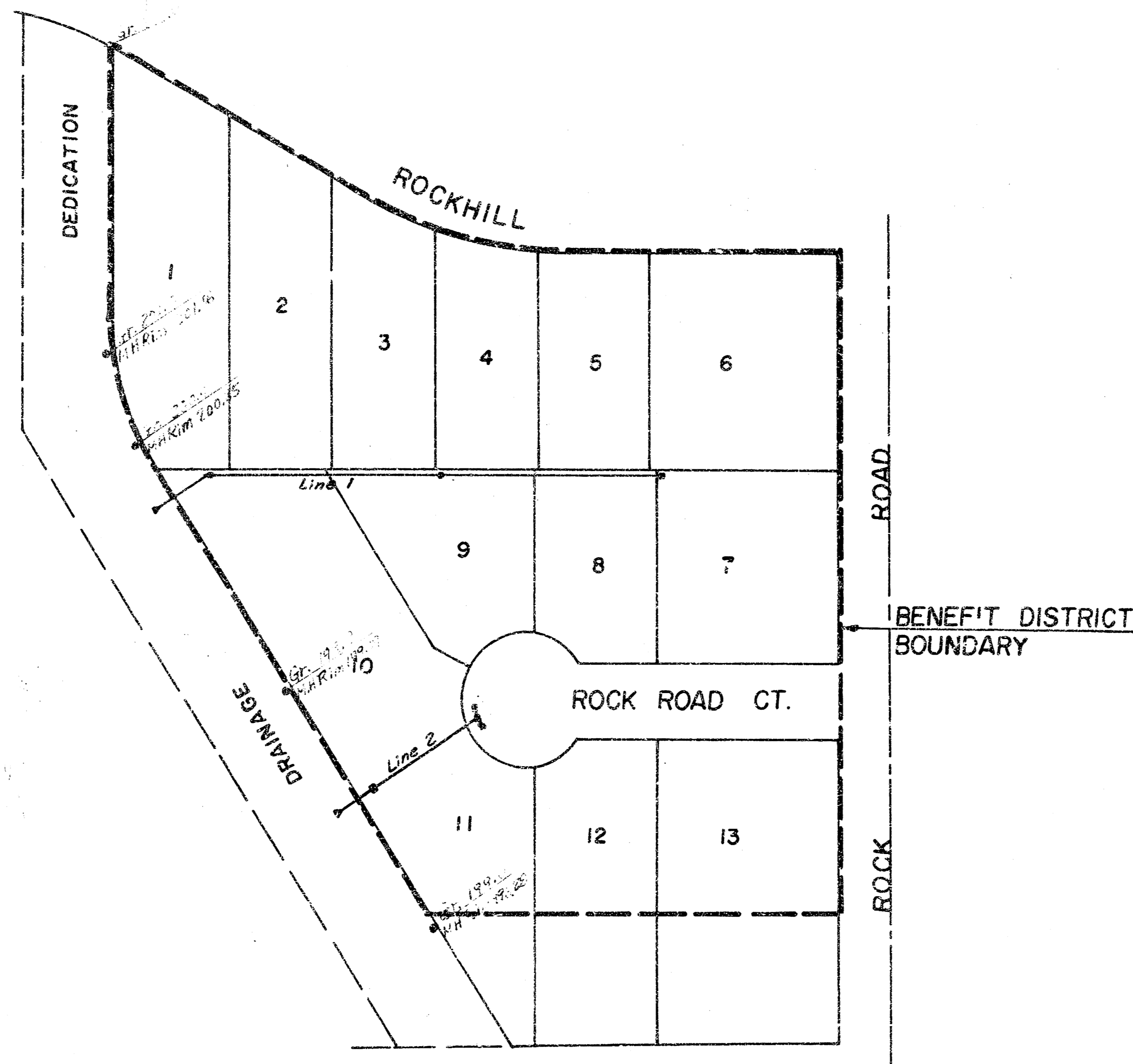
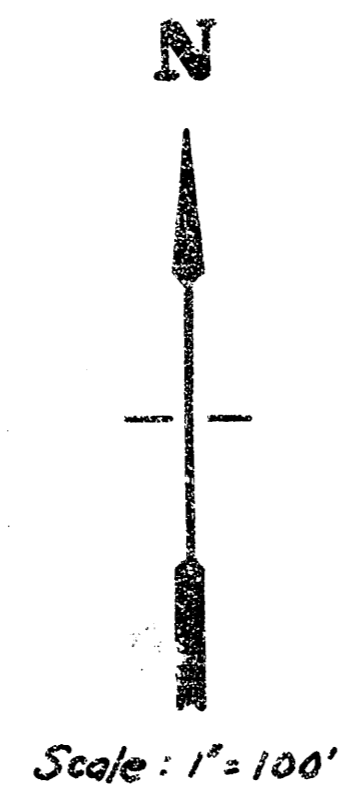
IN BRAD BOONE ADDITION

GENERAL NOTES

- 1) CONTRACTOR SHALL COORDINATE WORK WITH PAVING AND SANITARY CONTRACTORS, AND CONTACT RELEVANT UTILITY COMPANIES AND OTHER AGENCIES INVOLVED WITH THIS PROJECT.
- 2) ~~FIELD ENGINEER SHALL TAKE CARE TO ALL IRONS AND FITTINGS IN THE PROJECT AREA BEFORE CONSTRUCTION BEGINS. FIELD ENGINEER SHALL REPAIR ALL SUCH IRONS AND FITTINGS DISTURBED DURING CONSTRUCTION.~~
- 3) THE TOPS OF INLETS AND MANHOLES AS NOTED ON THE PLANS MAY VARY SO AS TO MEET PROPOSED TOP OF CURB ELEVATIONS OR PAVEMENT ELEVATIONS. THE FIELD ENGINEER SHALL LOCATE INLETS AND MANHOLES WITH REFERENCE TO PROPOSED PAVING PLANS OF THE PERTINENT STREETS.
- 4) ALL CONCRETE SHALL BE STANDARD PAVING MIX UNLESS OTHERWISE NOTED.
- 5) CONTRACTOR SHALL HAVE THE OPTION OF INSTALLING PRE-CAST TYPE 1A CURB INLET IN LIEU OF THE BRICK TYPE STRUCTURE. SEE STANDARD DETAIL PRE-CAST TYPE 1A CURB INLET DATED AUGUST, 1979.
- 6) DRAINAGE CONTRACTOR TO PERFORM GRADING WITHIN THE DRAINAGE DEDICATION IN THE FOLLOWING MANNER: CONTRACTOR TO GRADE BETWEEN EXISTING SANITARY SEWER MANHOLES ON A STRAIGHT GRADE SUCH THAT TOPS OF MANHOLES ARE 4 INCHES ABOVE GROUND. GRADING IS ALSO TO BE DONE SUCH THAT MANHOLES ARE NOT LEFT IN A SUMP. GRADING TO BE BID AND PAID AS GRADING LOW SPUN.

THE REAR OF THE TRENCH WITHIN THE CHANNEL SHALL BE BRICK FILLED AND COMPACTED IN 6" LIFTS TO 90% STD DENSITY.

THE CONTRACTOR SHALL BE RESPONSIBLE FOR PRESERVING PROPERTY IRONS. THE CONTRACTOR SHALL BE REQUIRED TO RE-ESTABLISH ANY PROPERTY IRONS WHICH ARE DAMAGED OR DESTROYED BY HIS CONSTRUCTION OPERATIONS. SUCH IRONS SHALL BE RE-ESTABLISHED BY A LICENSED LAND SURVEYOR OR A LICENSED PROFESSIONAL ENGINEER IN ACCORDANCE WITH STATE LAWS.



Index

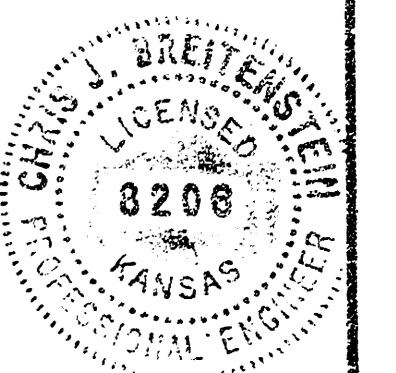
Sheet 1	Cover Sheet
Sheet 2-3	Plan & Profile
Sheet 4	Type IA Inlet
Sheet 5	Special Inlet w/ Beehive Gate
Sheet 6	Std. Drop Inlet

R.W. BRUGGEMAN, DIRECTOR OF ENGINEERING /
CITY ENGINEER

CITY OF WICHITA, KANSAS

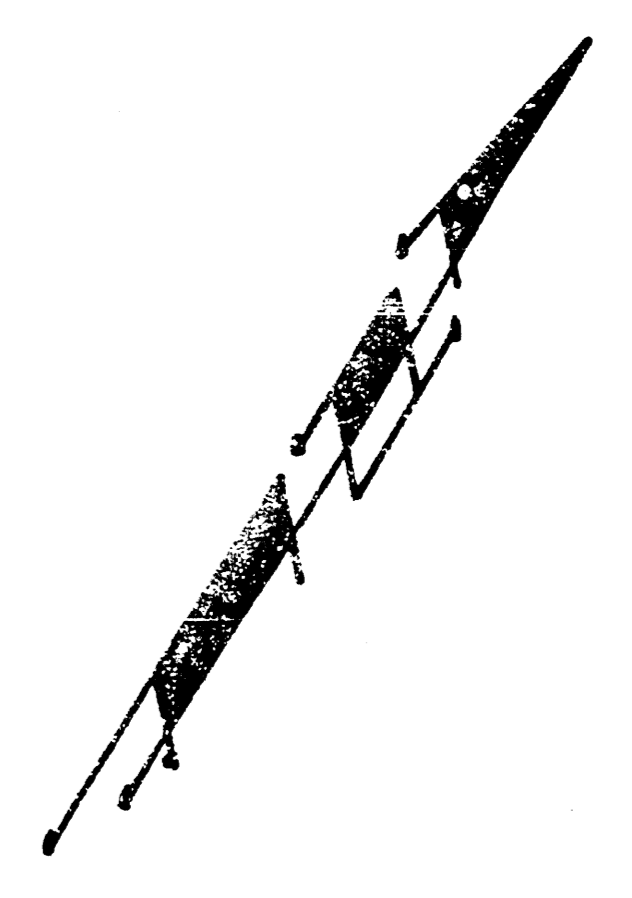
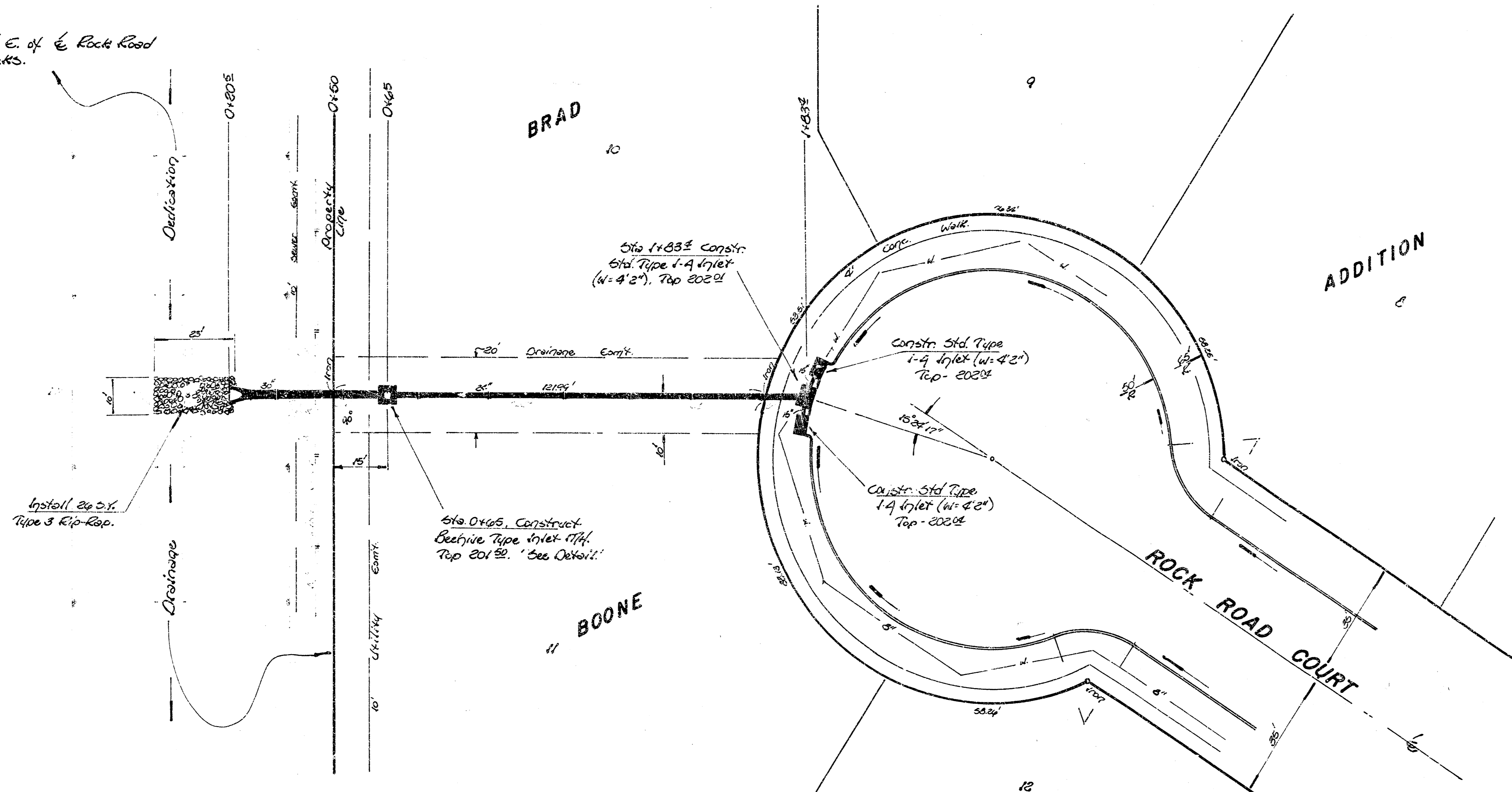
PROJECT NO. 468 76 245 81101 000 000 001

DATE: _____

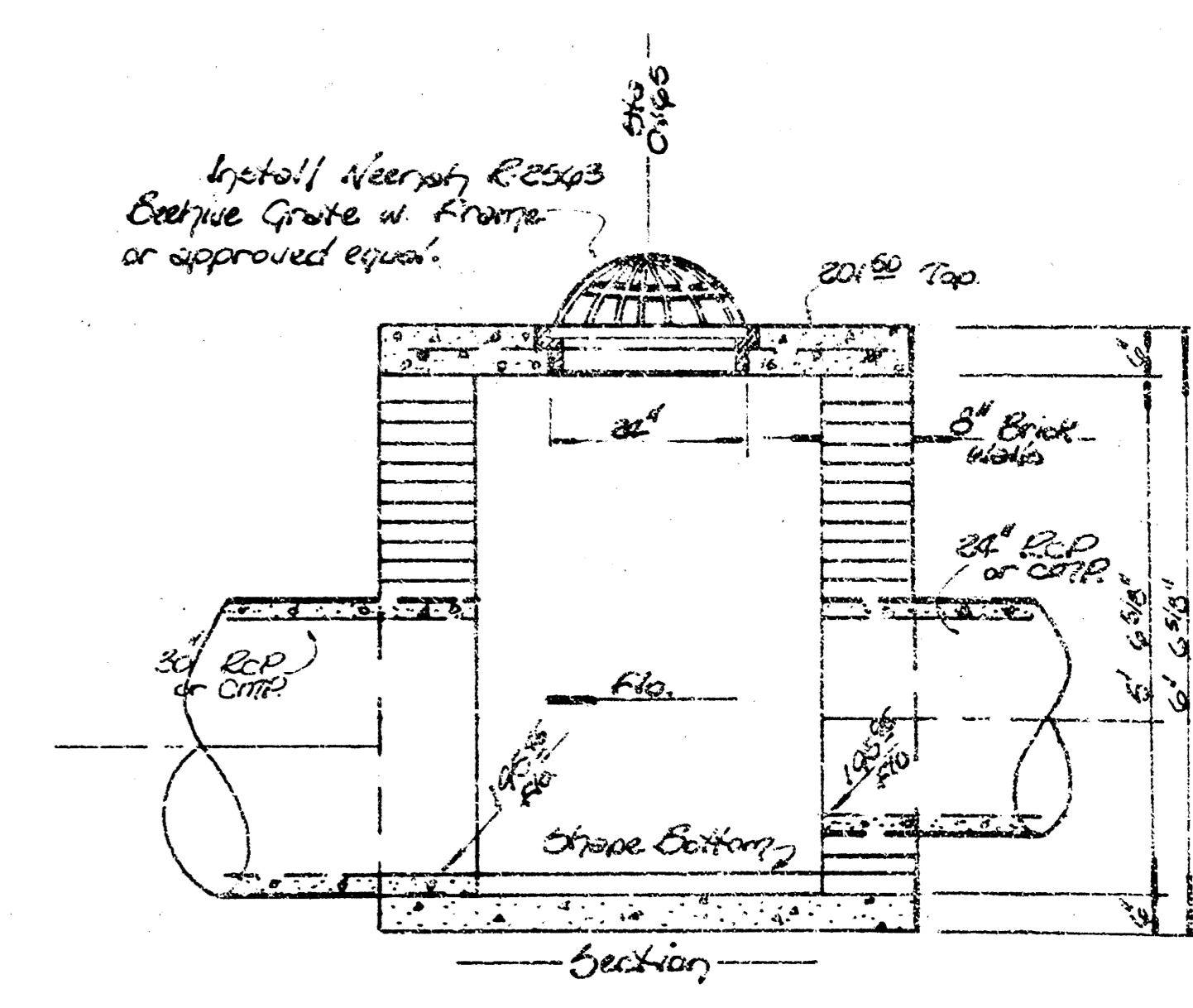
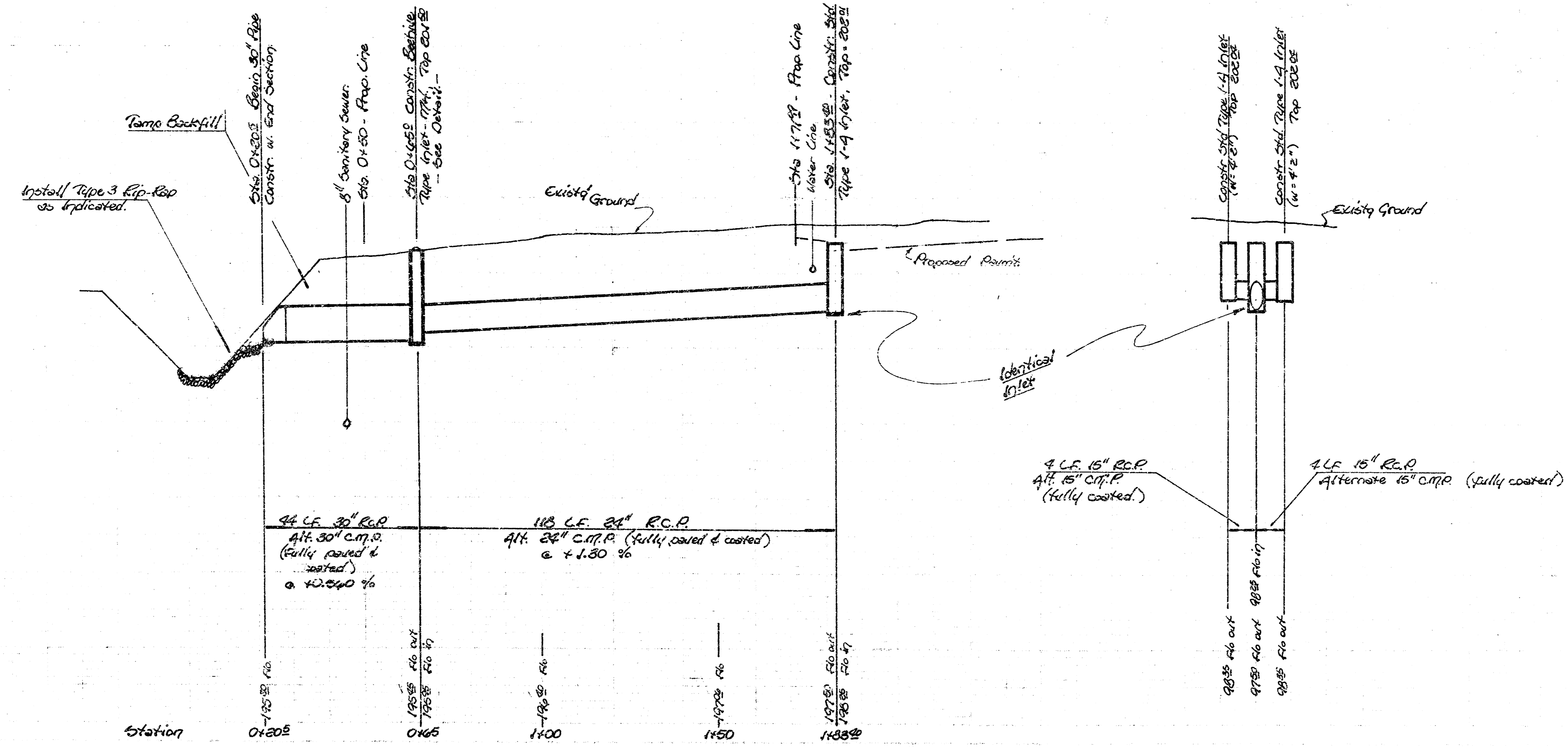
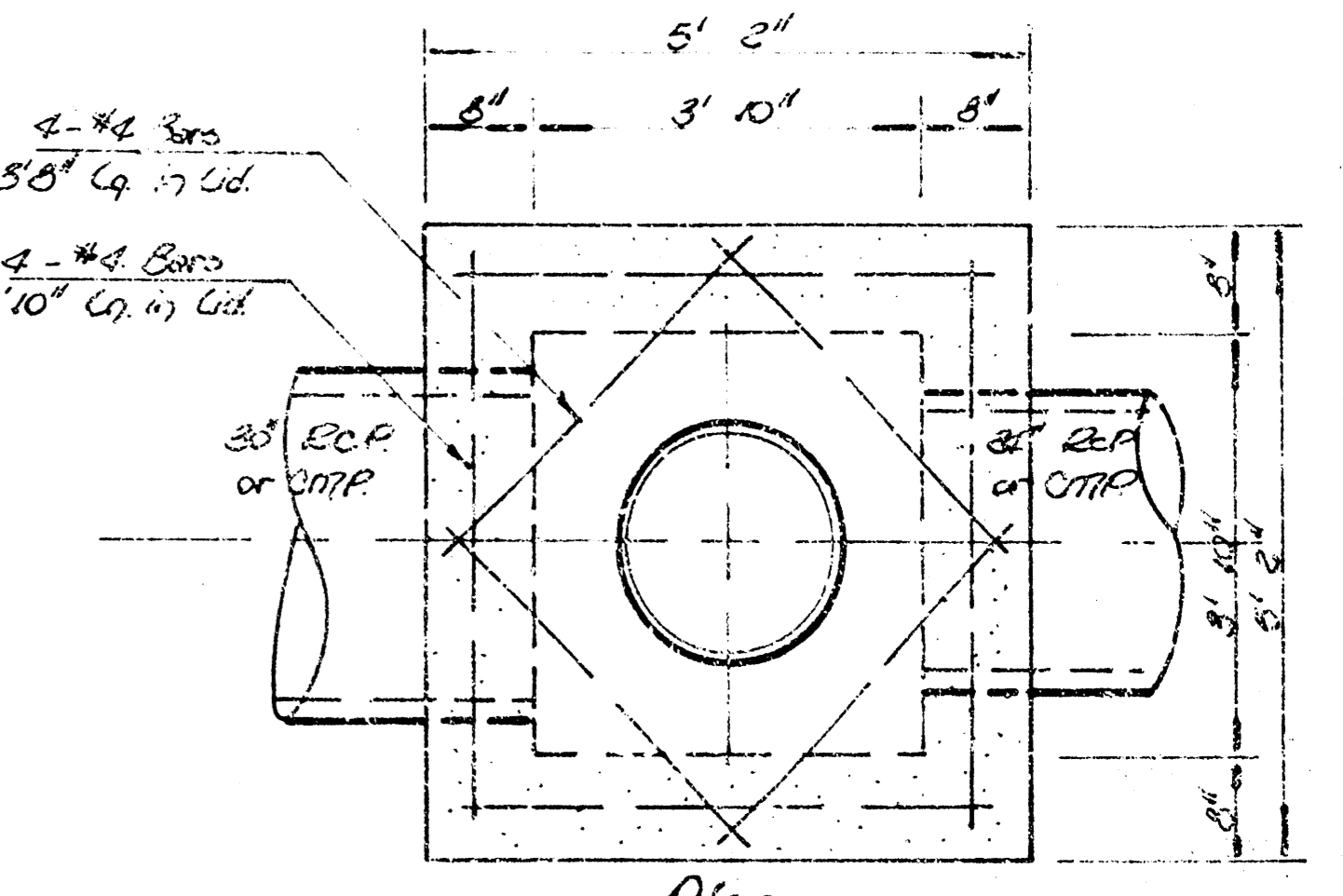


12/10

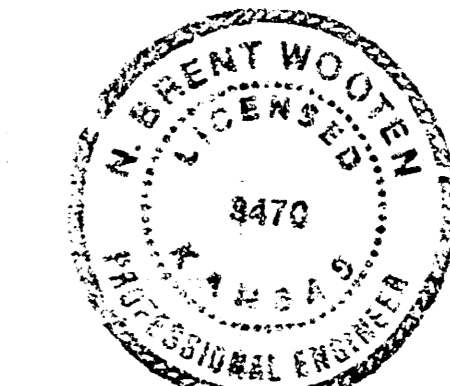
Blk. 149.70 City Std. Disc. 28' E. of E. Rock Road
 & 51' N. of R.R. Tracks.



Scale:
 Plan - 1" = 20'
 Profile - 1" = 20' Hor.
 1" = 5' Vert.



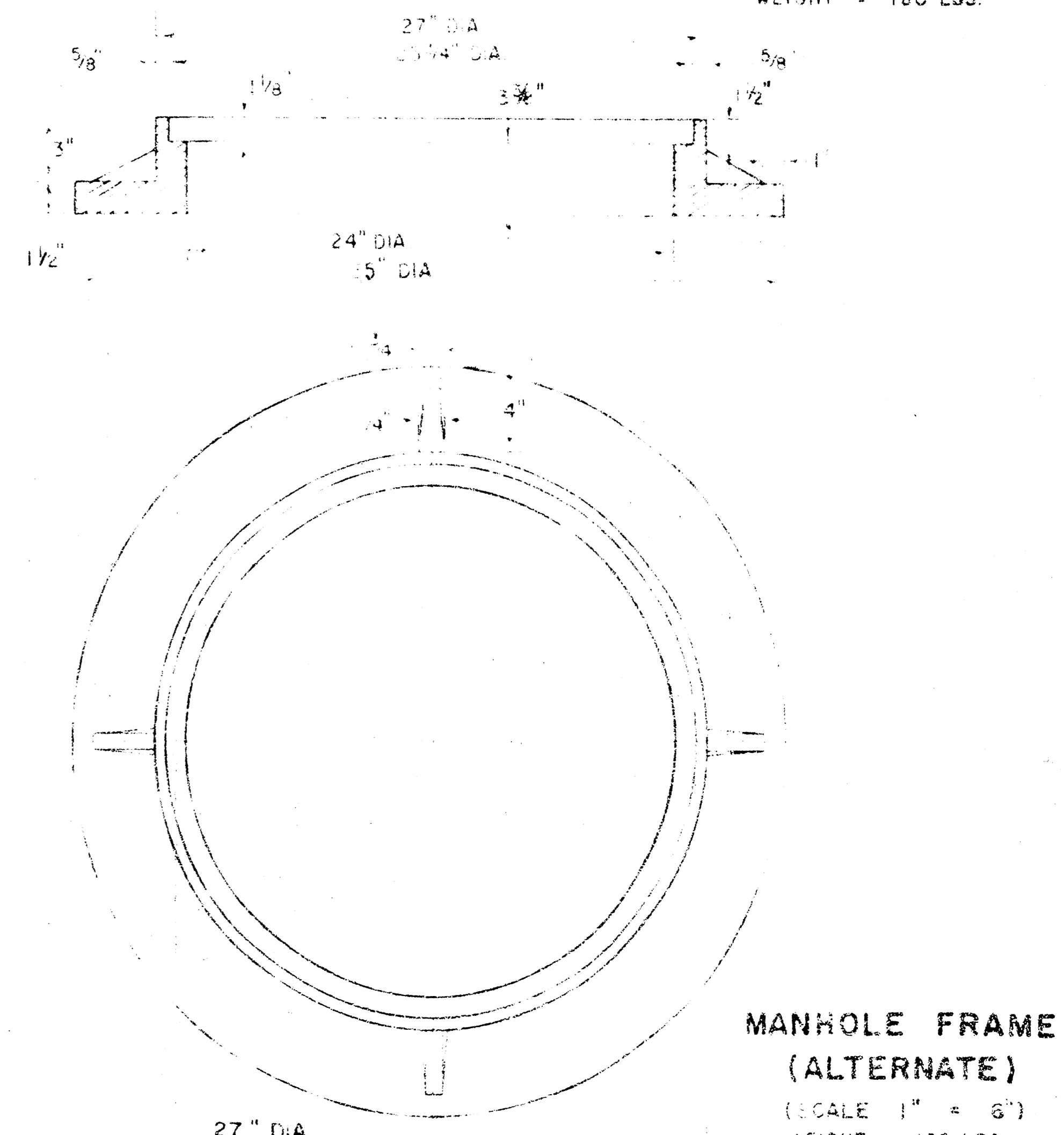
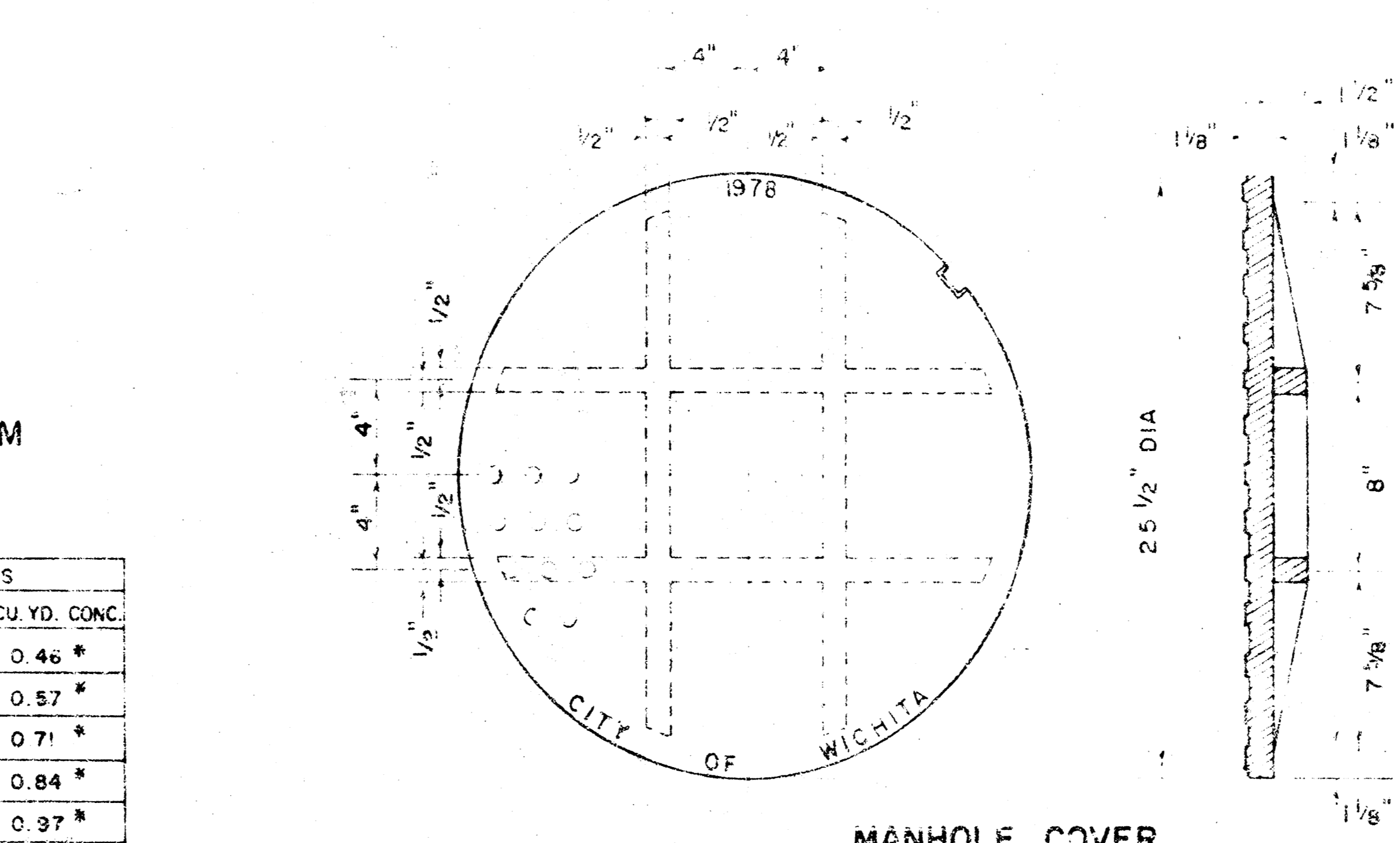
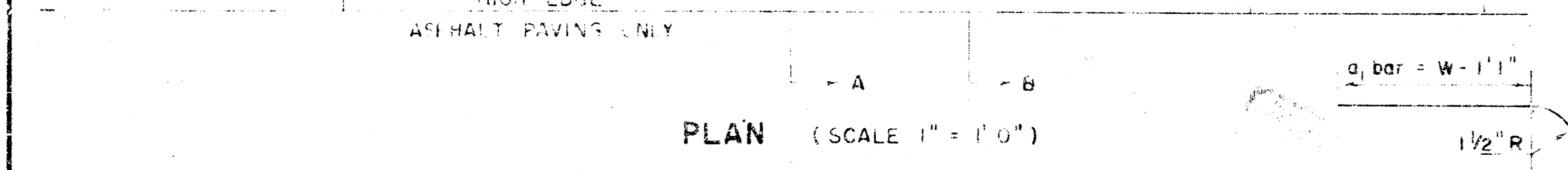
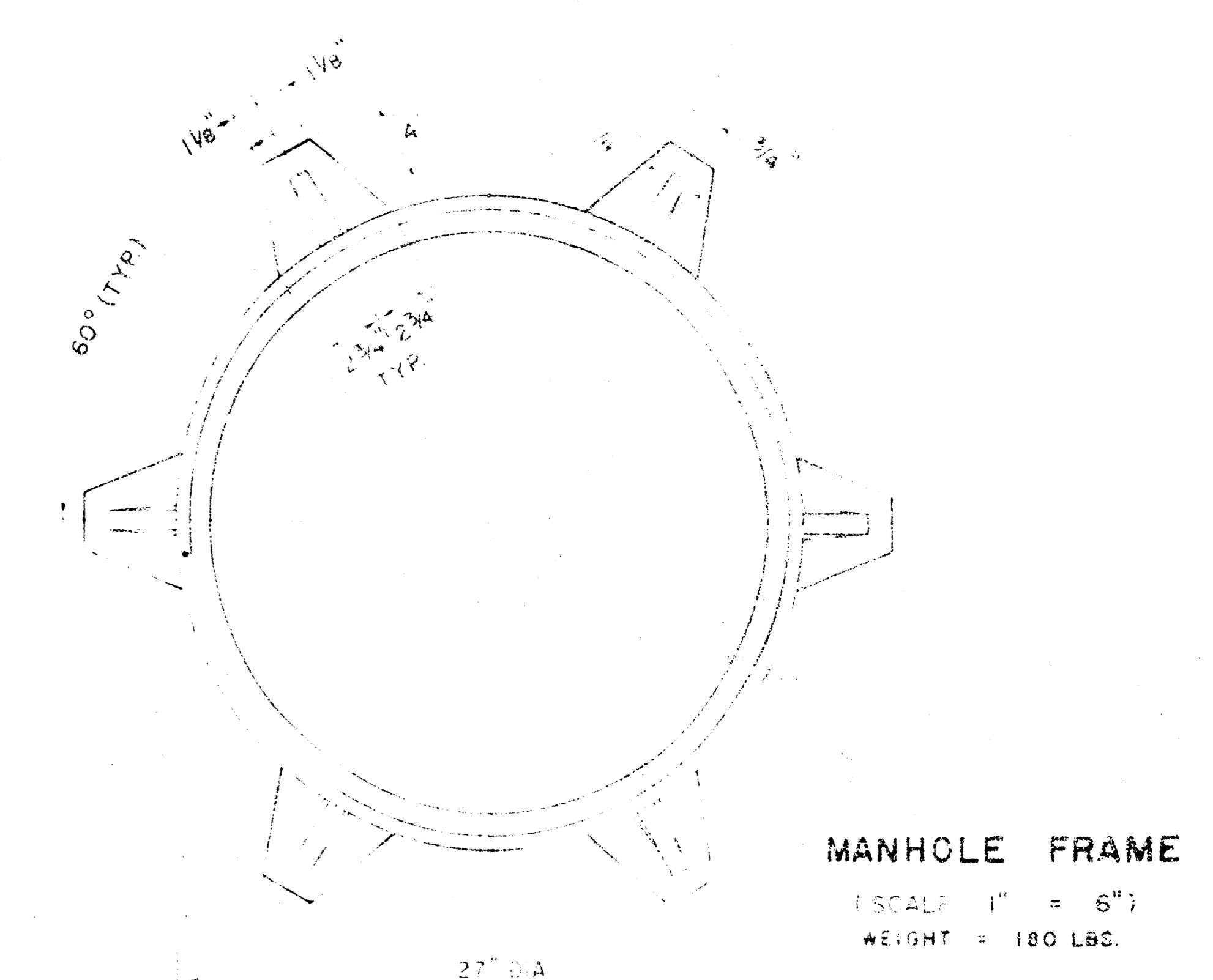
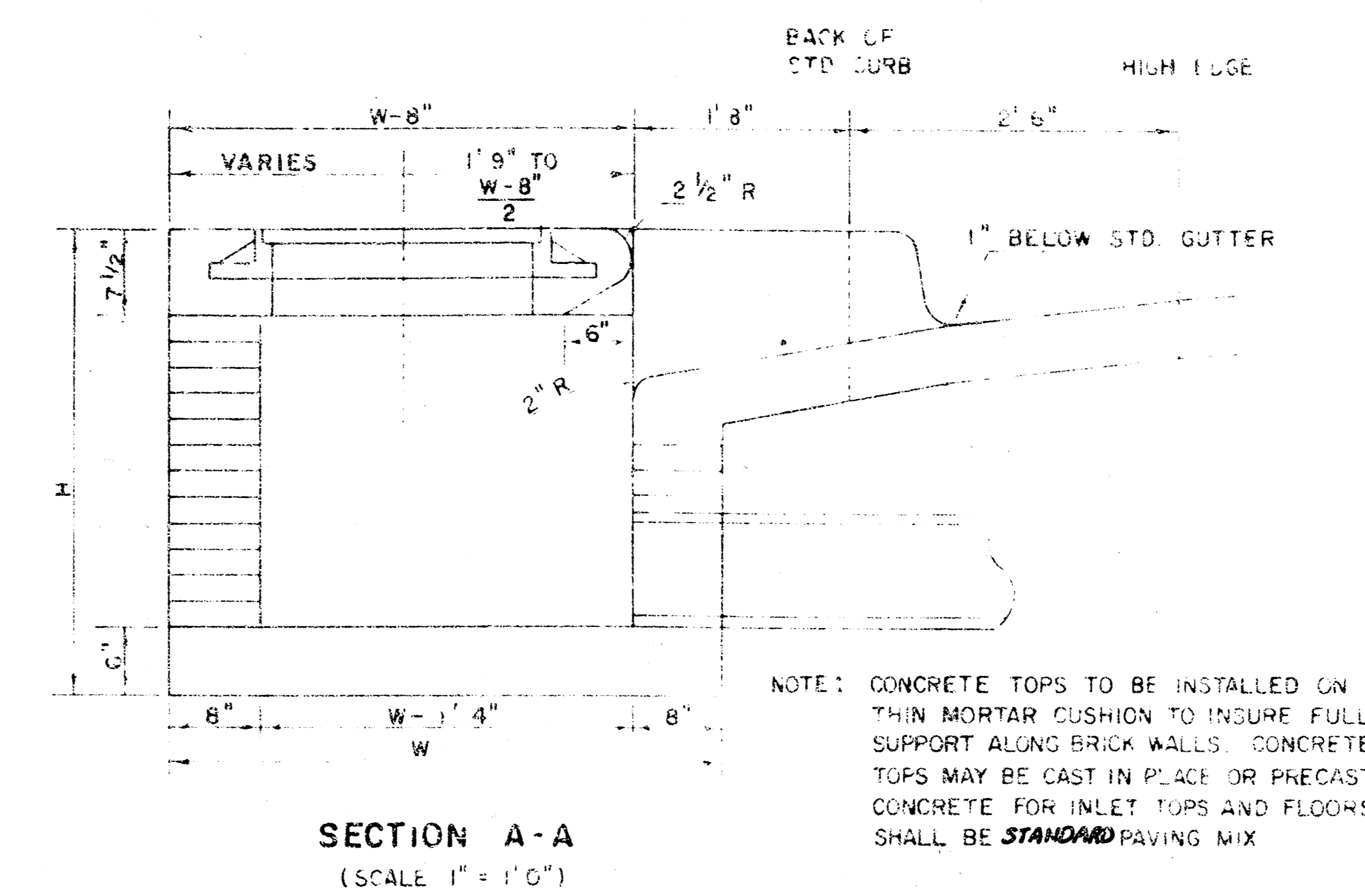
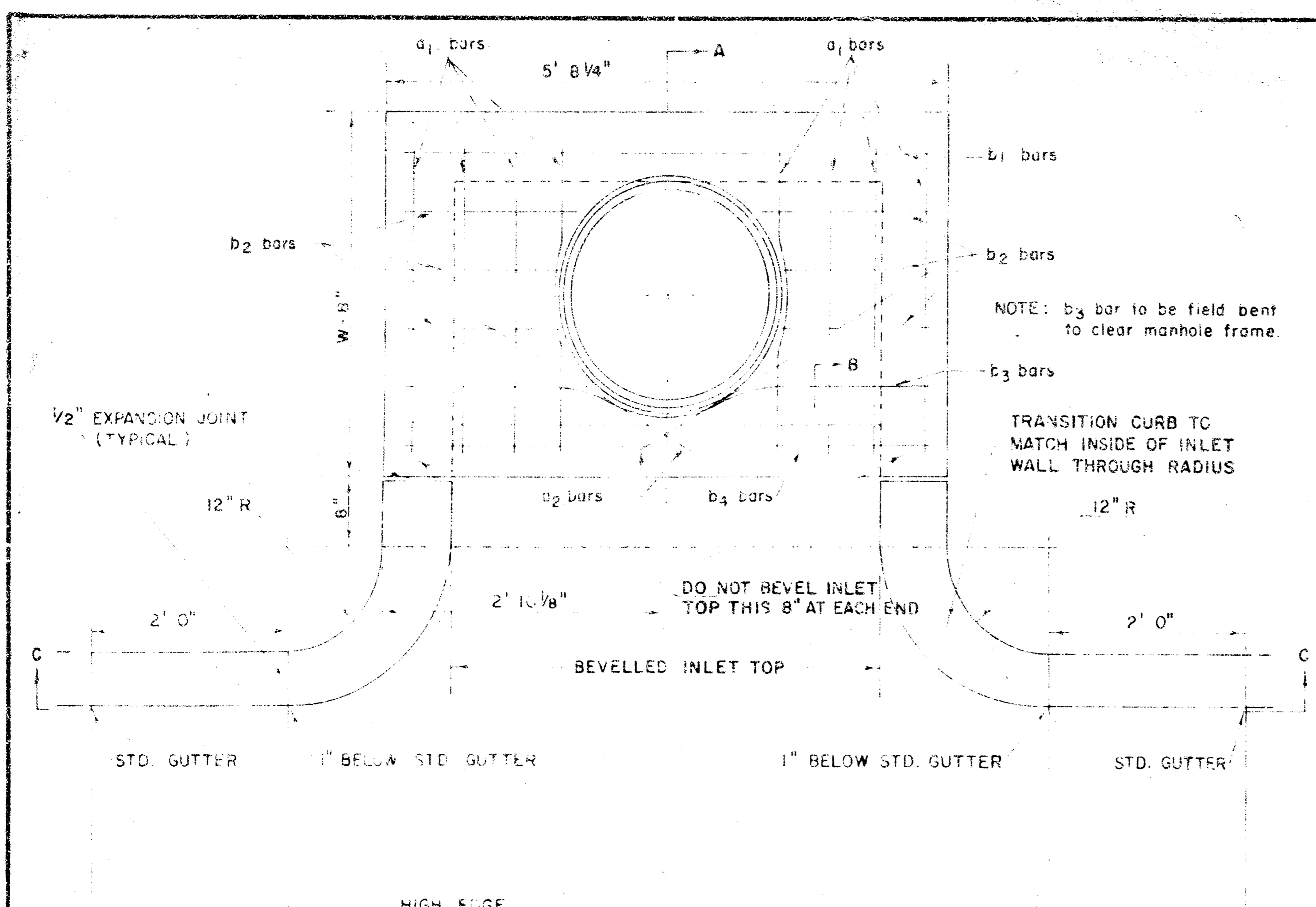
Special Inlet - 174. Detail
 No Scale.
 Note - Use Std. Paving Mix for Sid & Floor.



3/6

S.W.S. No. 228, Line 2 3/6

FILMED FROM THE BEST AVAILABLE COPY



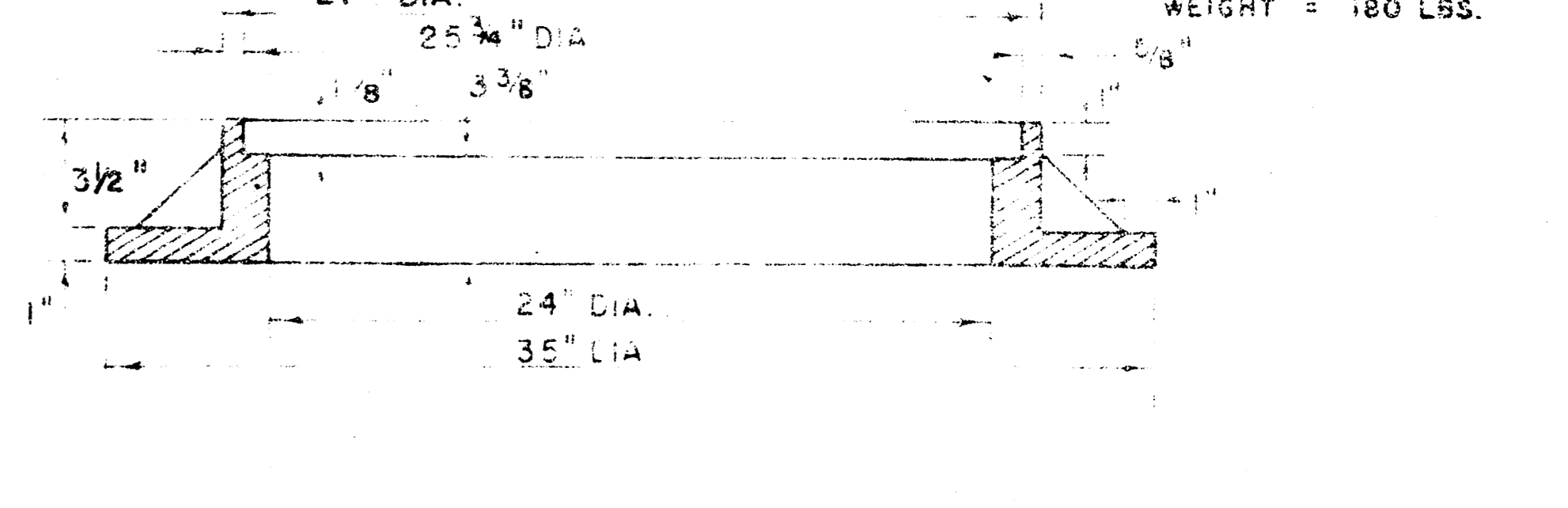
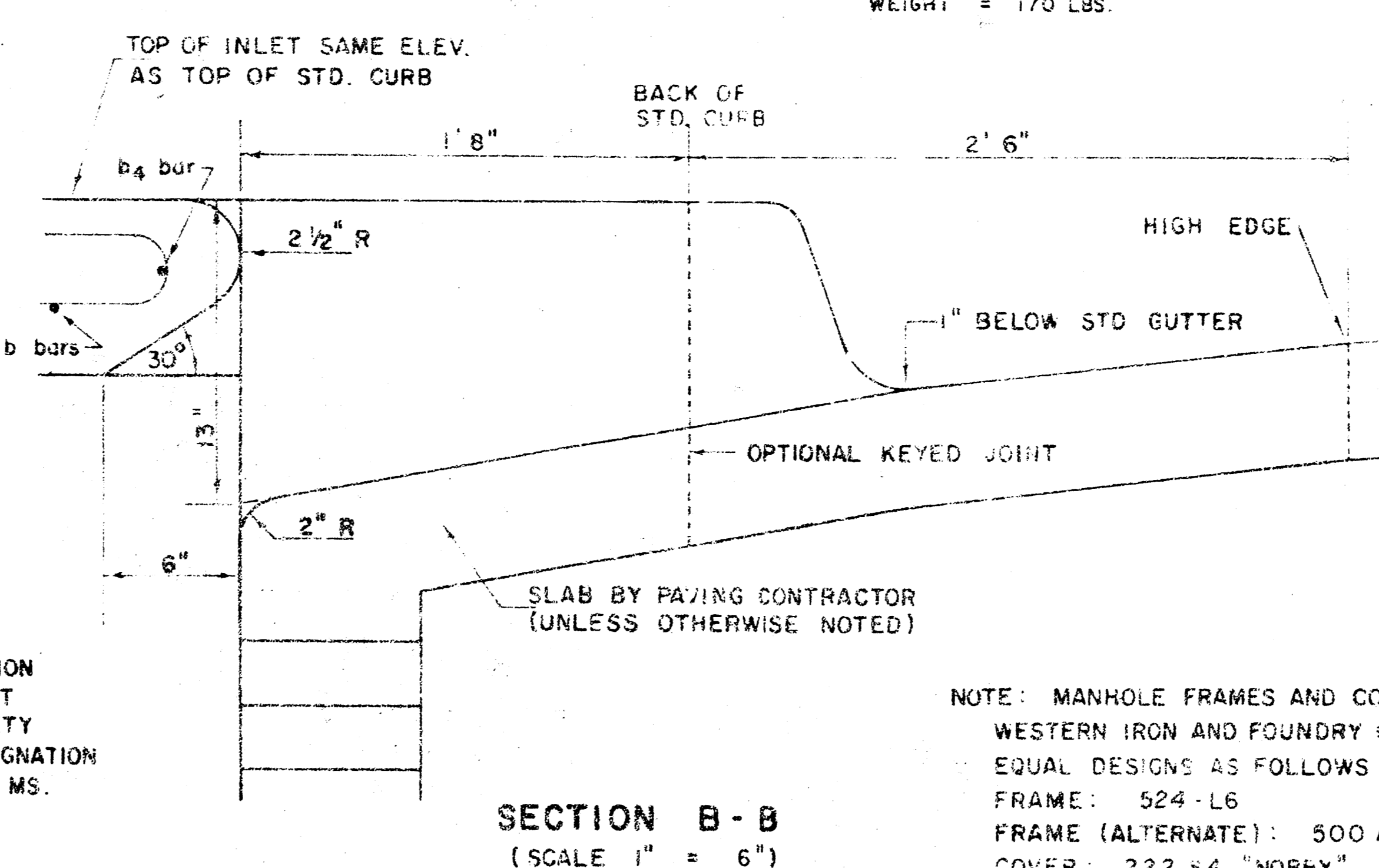
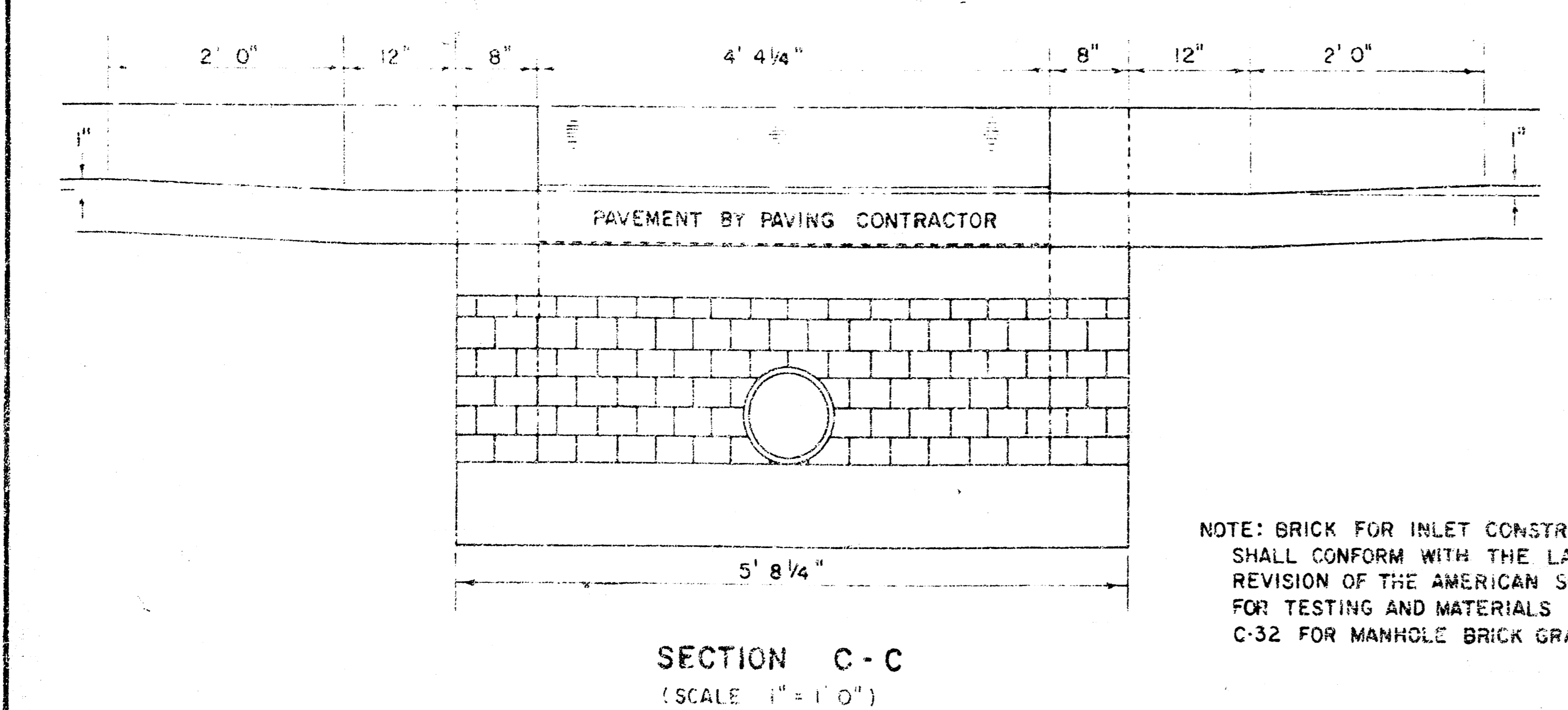
STEEL SCHEDULE

BAR NUMBER	a1	a2	W-4 2"	W-5 0"	W-5 8"	W-6 0"	W-7 0"	W-8 0"	b1	b2	b3	b4	WT. LBS.
1	8	2	1	2	5	7	9	6	1	1			60*
2	4	4	4	4	4	4	4	4	4	4	6		77*
3	4	4	4	4	4	4	4	4	4	4	6		97*
4	4	4	4	4	4	4	4	4	4	4	6		111*
5	4	4	4	4	4	4	4	4	4	4	6		124*

STANDARD CURB INLET PRECAST TOPS

W	PRE-CAST TOP SIZE	PIPE SIZE	CU. YD. CONC.
4' 2"	36" x 5' 8 1/4" x 7 1/2"	21" B SMALLER	0.46*
5' 0"	44" x 5' 8 1/4" x 7 1/2"	24" B 30"	0.57*
6' 0"	54" x 5' 8 1/4" x 7 1/2"	36" B 42"	0.71*
7' 0"	64" x 5' 8 1/4" x 7 1/2"	48" B 54"	0.84*
8' 0"	74" x 5' 8 1/4" x 7 1/2"	60" B 66"	0.97*

* GROSS VOLUME

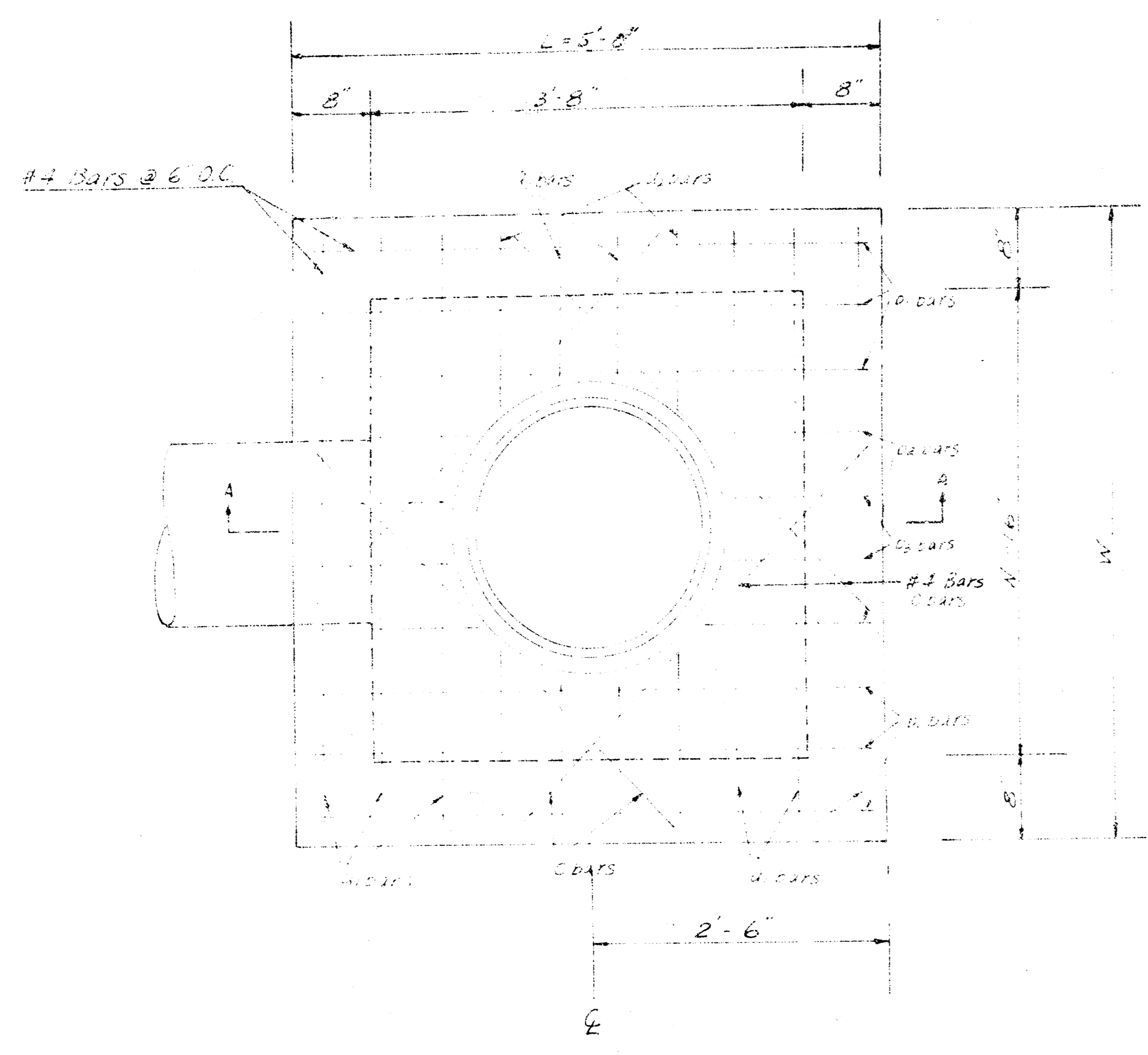


NOTE: BRICK FOR INLET CONSTRUCTION SHALL CONFORM WITH THE LATEST REVISION OF THE AMERICAN SOCIETY FOR TESTING AND MATERIALS DESIGNATION C-32 FOR MANHOLE BRICK GRADE MS.

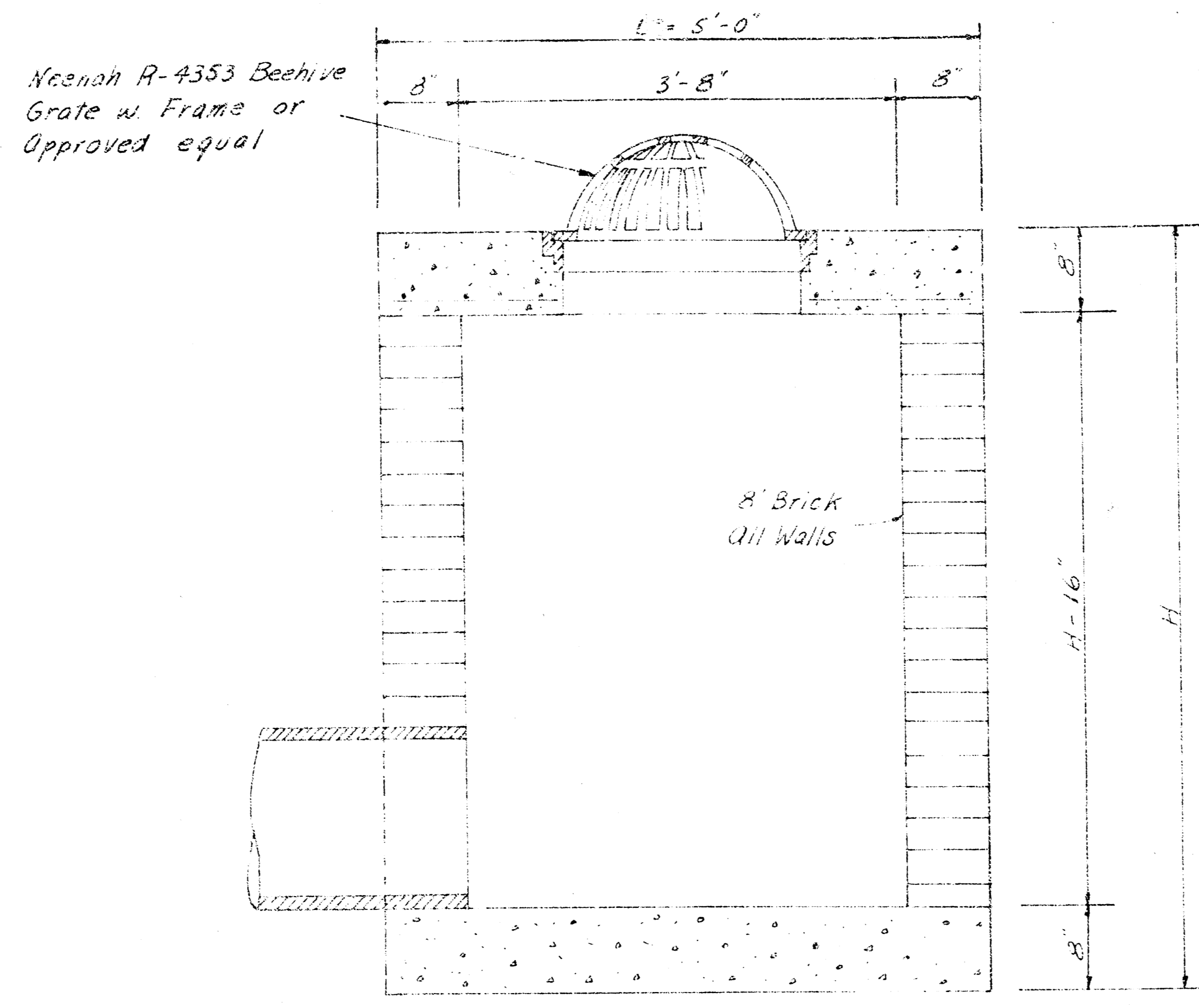
NOTE: MANHOLE FRAMES AND COVER ARE WESTERN IRON AND FOUNDRY CO. INC. OR EQUAL DESIGNS AS FOLLOWS:
 FRAME: 524-L6
 FRAME (ALTERNATE): 500-A4
 COVER: 222-S4 "NOBBY"

DETAIL STANDARD TYPE IA CURB INLET
 CITY OF WICHITA, KANSAS
 R. W. LINN - CITY ENGINEER
 OCTOBER 1978

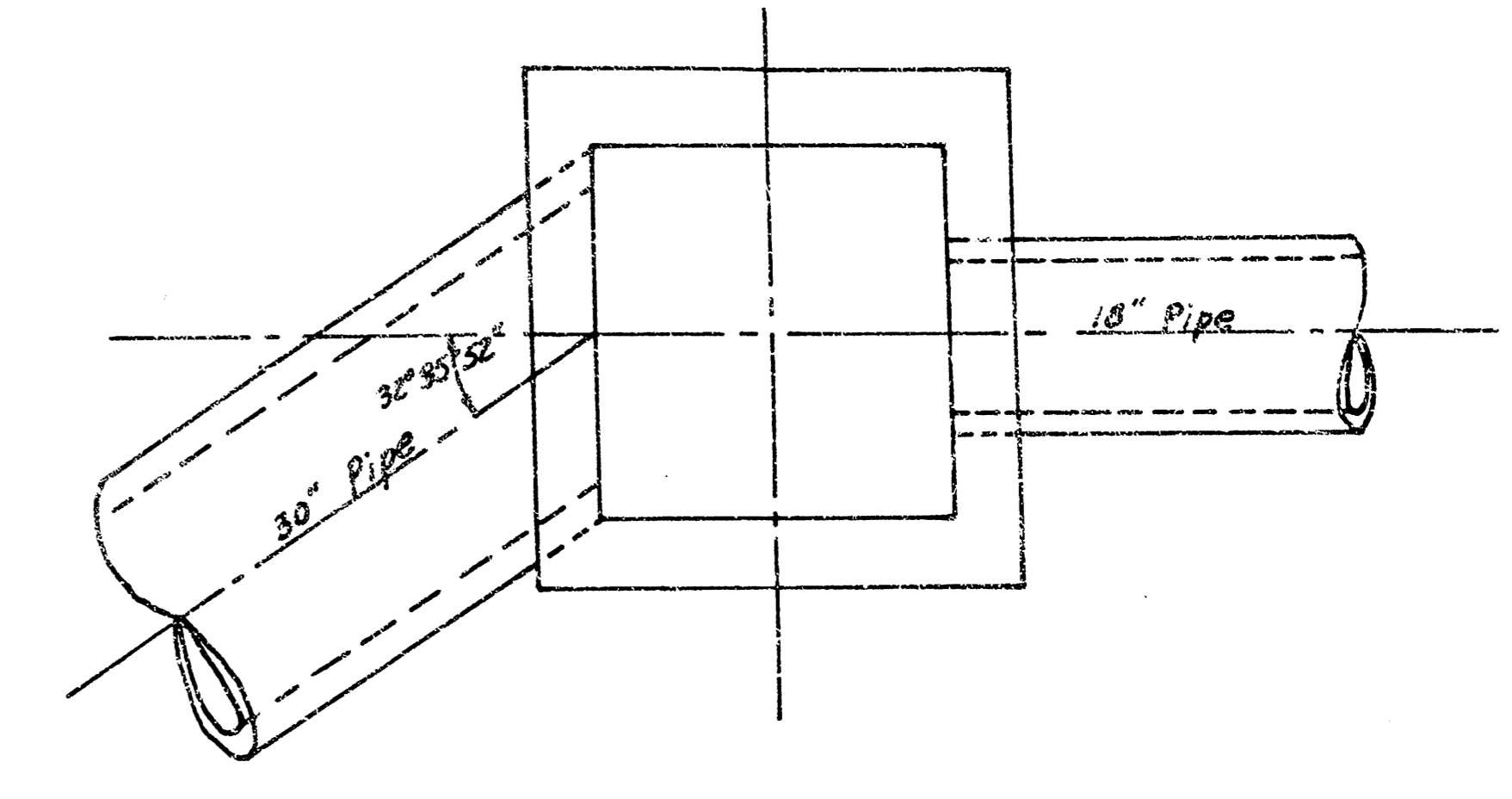
4/2
16



PLAN
(SCALE 1" = 1'0")



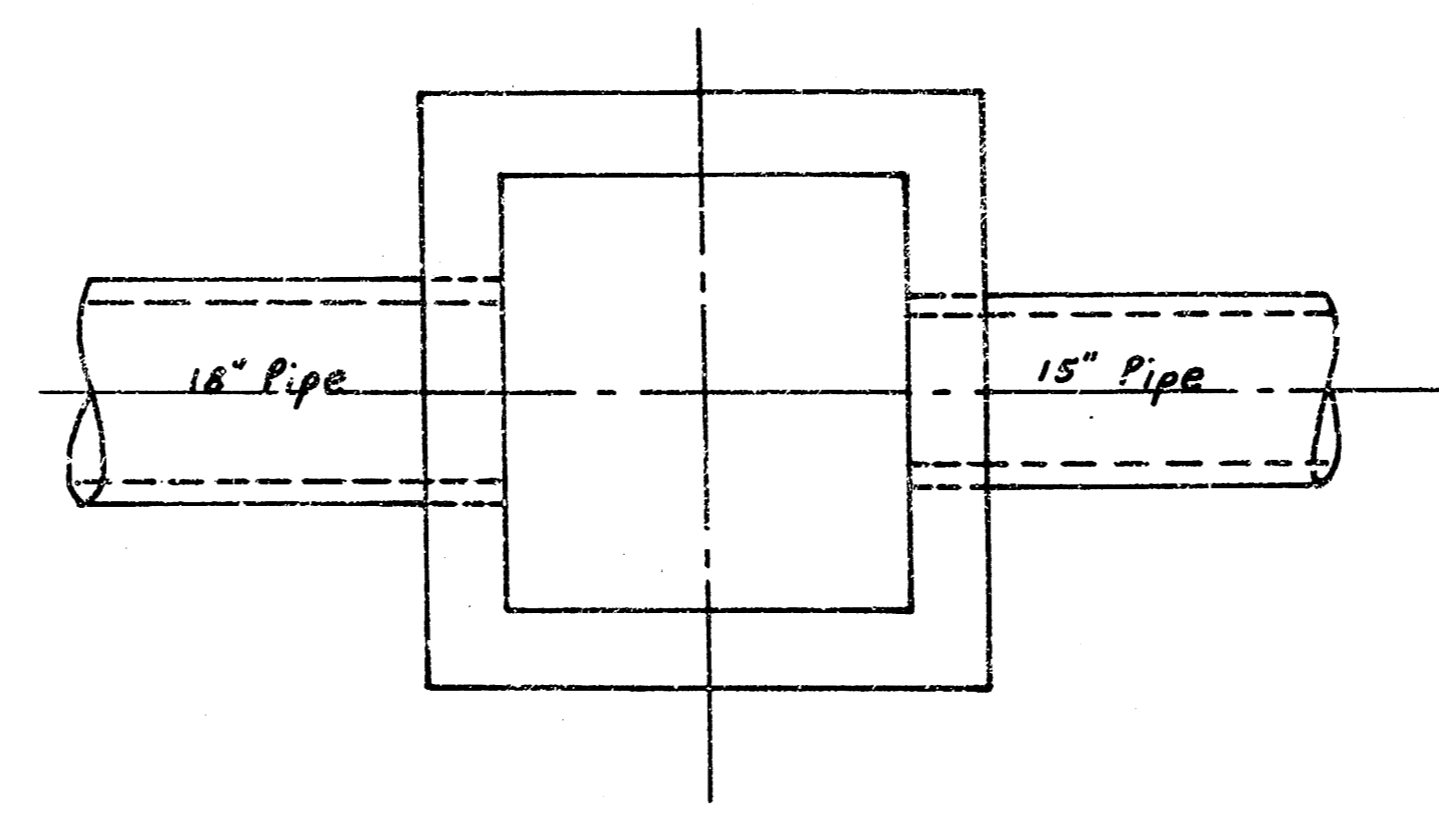
SECTION A-A
(SCALE 1" = 1'0")



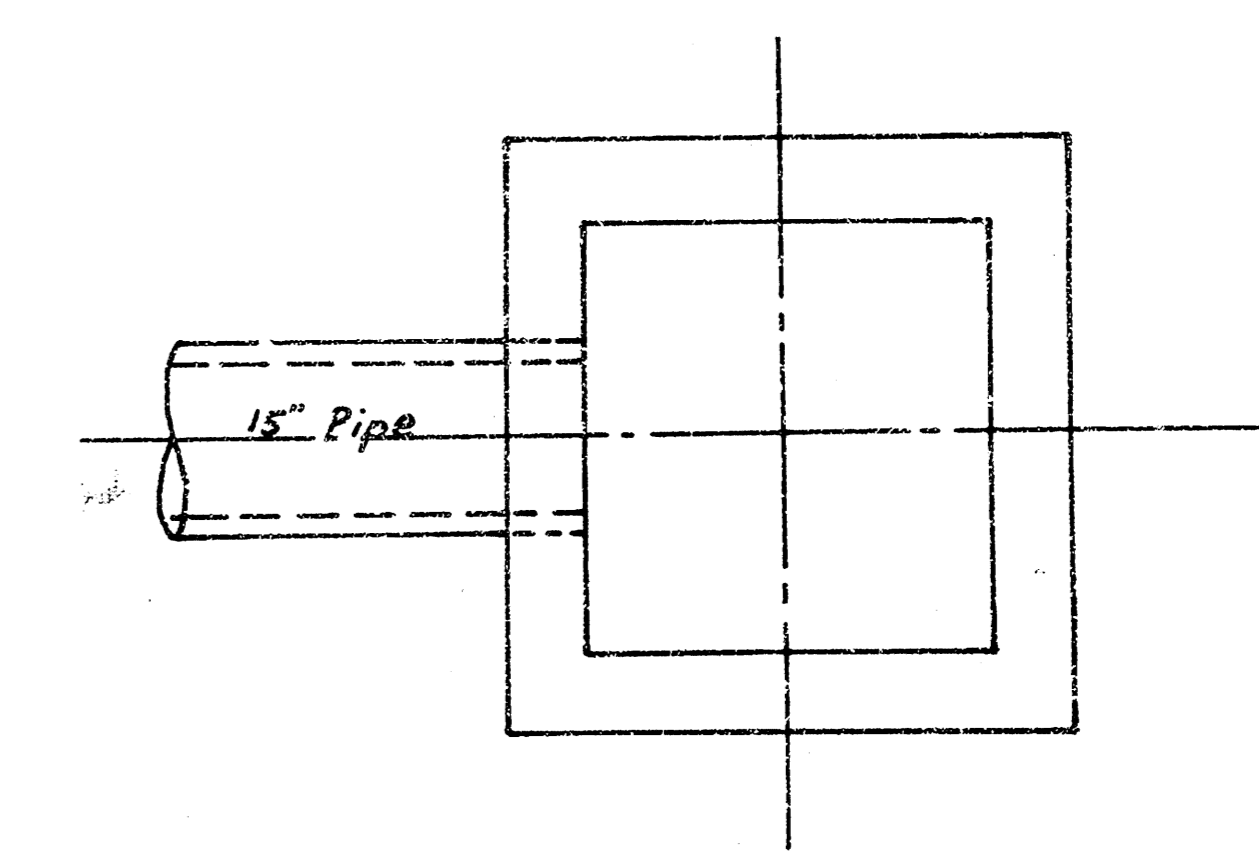
DETAIL 1

STEEL SCHEDULE

BAR	a ₁	a ₂	a ₃	b ₁		b ₂	b ₃	C	WT.	PIPE SIZE	Cu Yd. Conc.
NUMBER	6	4	4	W=5'0" W=6'0"	8	4	4	4	LBS		
SIZE	#4	#4	#4	#4	#4	#4	#4	#4			
W=5'0"	48"	16"	11"	48"	-	16"	11"	44"	63	30" & LESS	1.17
W=6'0"	55"	20"	17"	-	48"	16"	11"	410"	77	36"	1.41



DETAIL 2

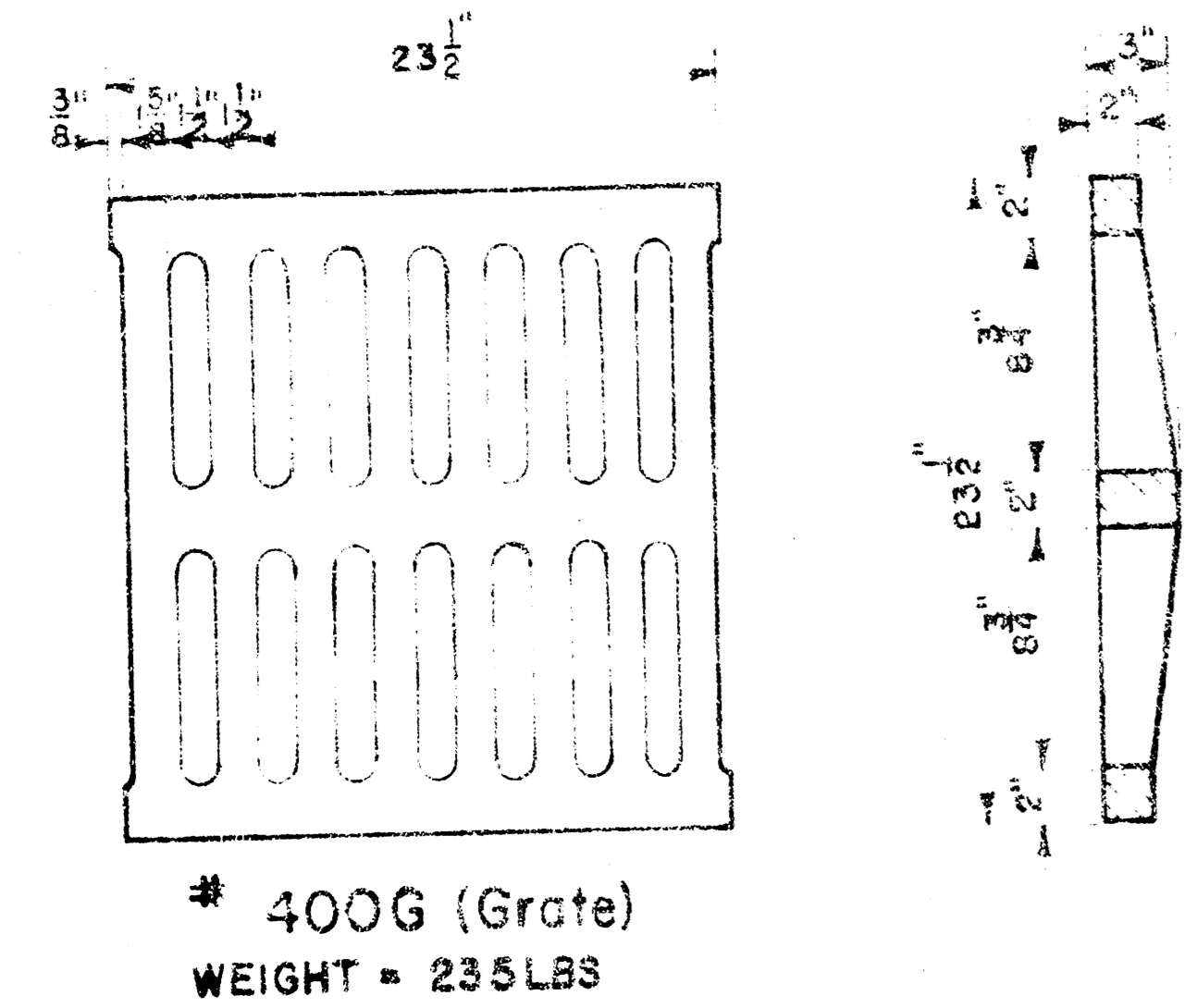
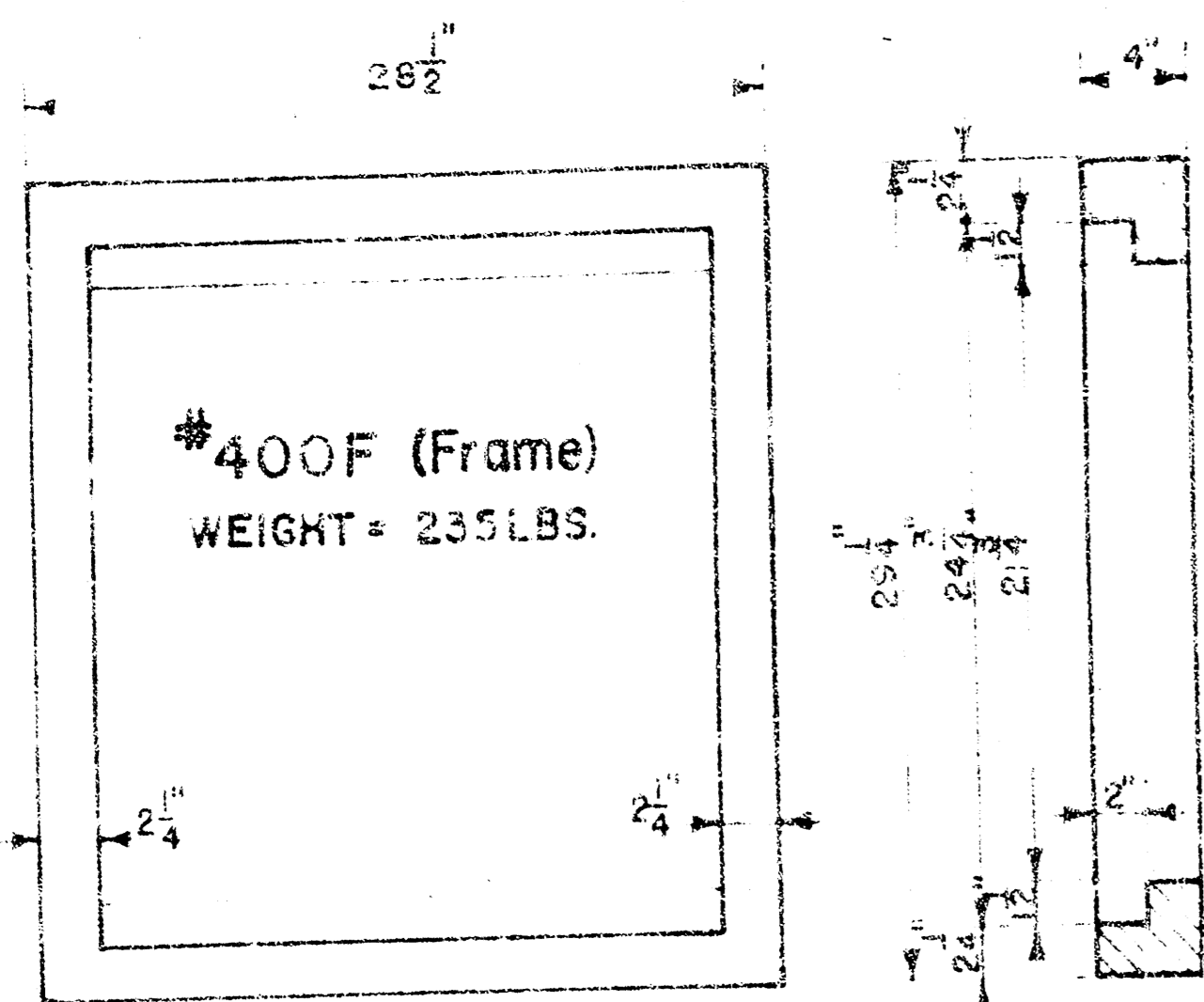


DETAIL 3

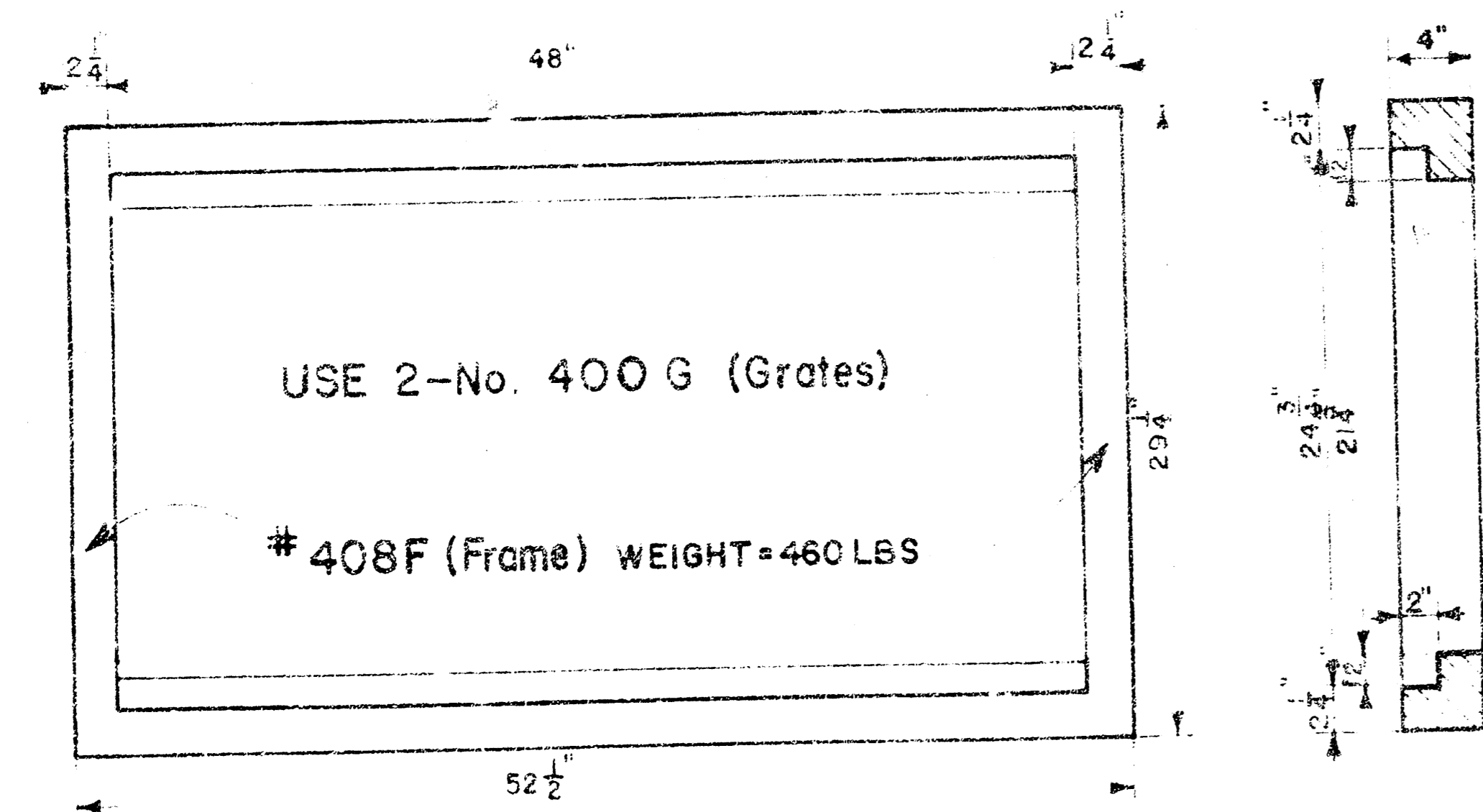
DETAILS OF
SPECIAL INLET WITH BEEHIVE GRATE
 CITY OF WICHITA, KANSAS
 S. W. S. NO. 228
 PROJECT NO. 468 76 245 81101 000 000 001

5/6
7/6

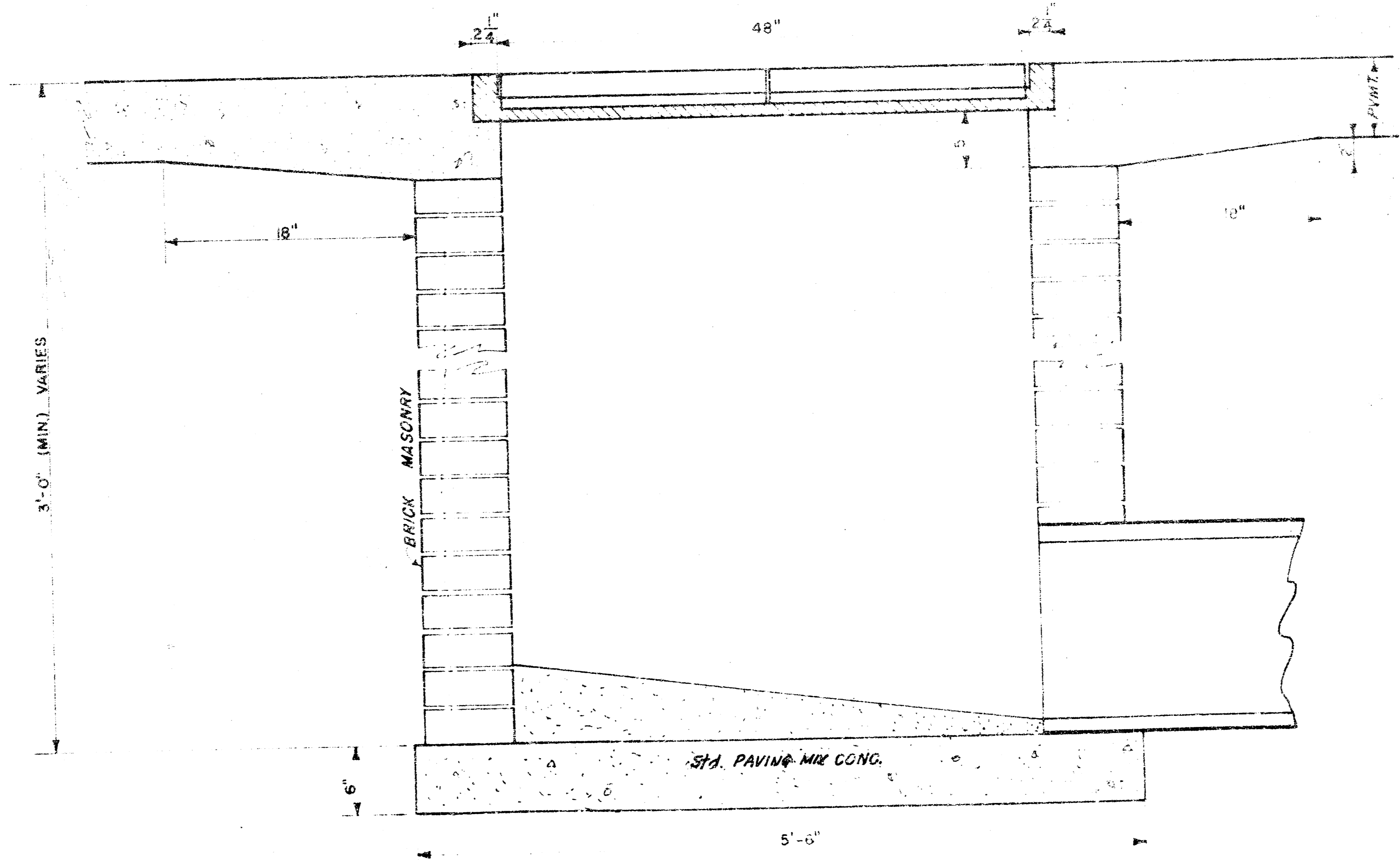
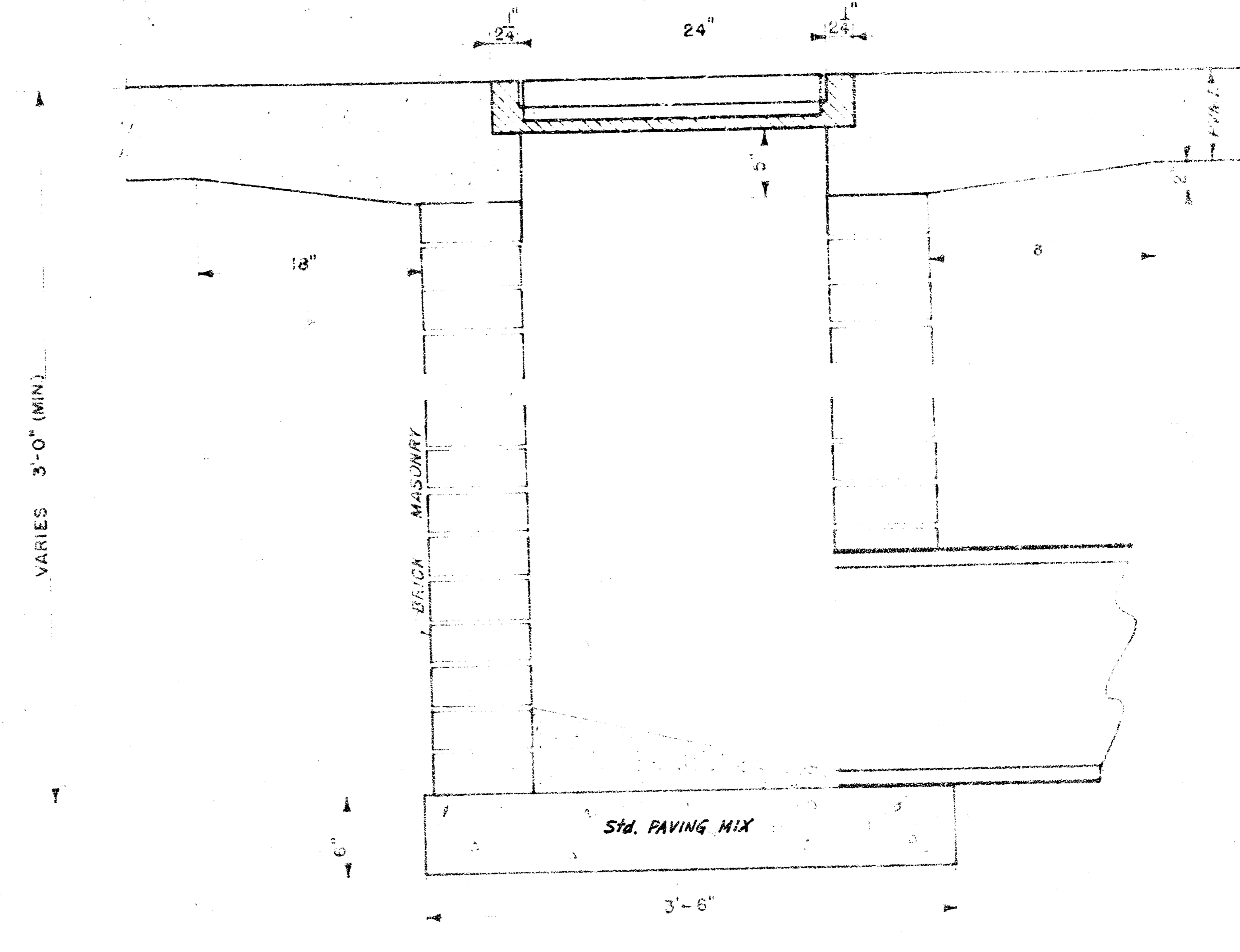
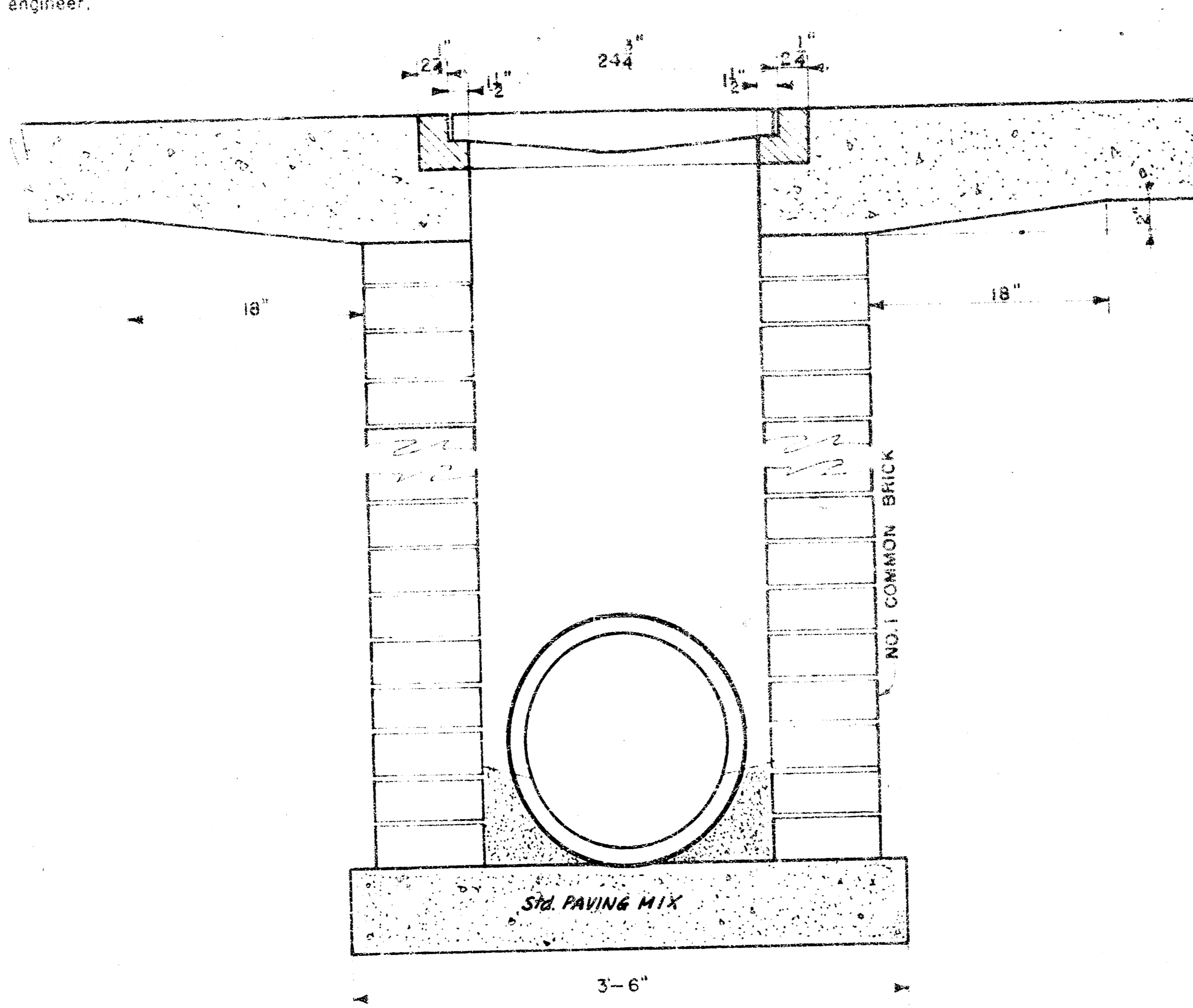
NOTE: Grates shall be imprinted on the top surface with "CITY OF WICHITA" using letters at least 1" in height. Other marking methods may be used only if approved by the engineer.



24"x24" Frame & Grate Detail



Double 24"x24" Frame Detail



DROP INLET DETAILS

R.W. Bruggeman, City Engineer
 City of Wichita, Kansas
 Project
 Project No.
 Date:
 Scale: 1-1/2" = 1'-0"

6/6