

STORM WATER SEWER NO. 231 WATERFORD NORTH

AN ADDITION TO WICHITA, SEDGWICK COUNTY, KANSAS

974 OCTOBER

James L. Johnson
JAMES L. JOHNSON

Robert J. Johnson

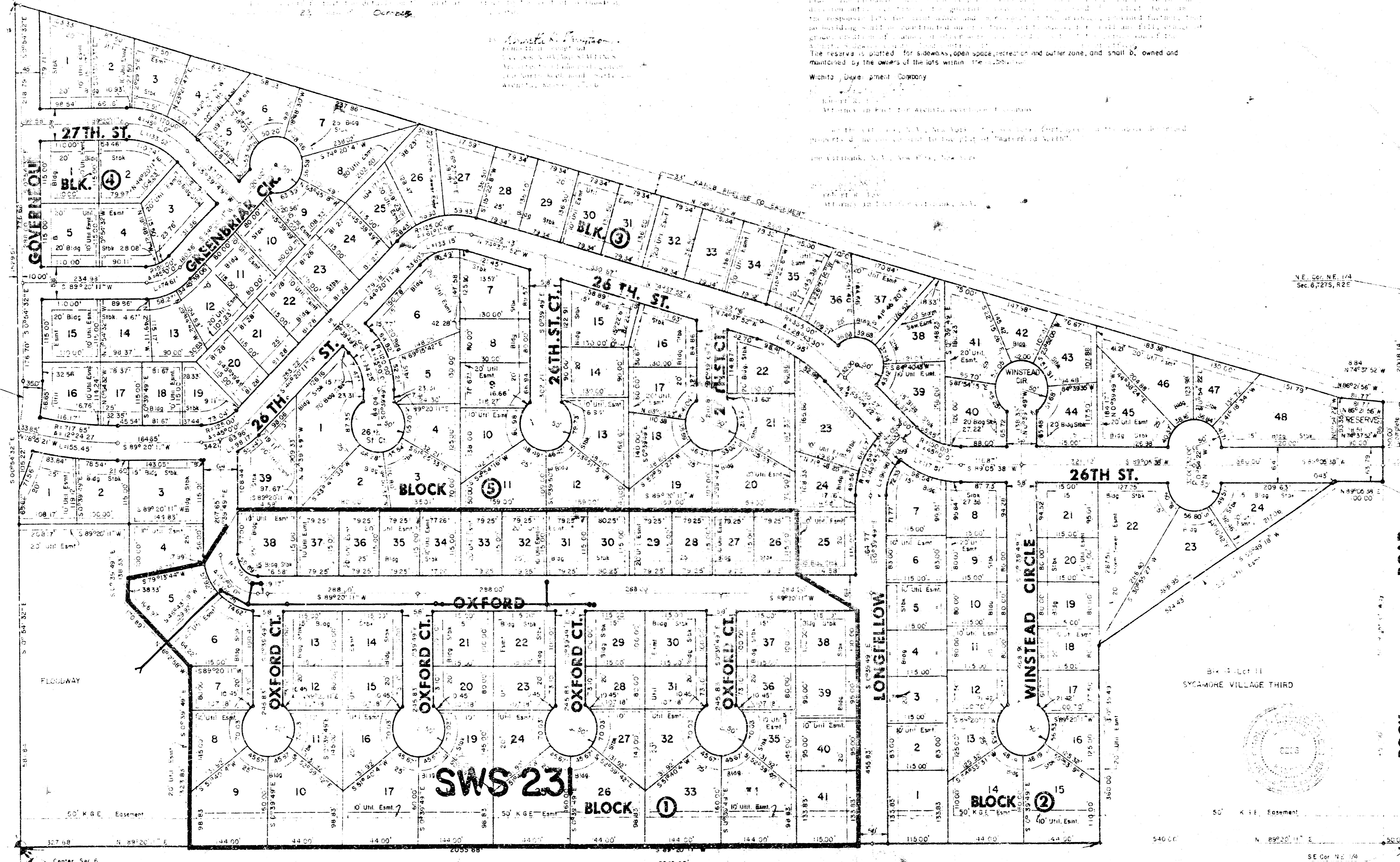
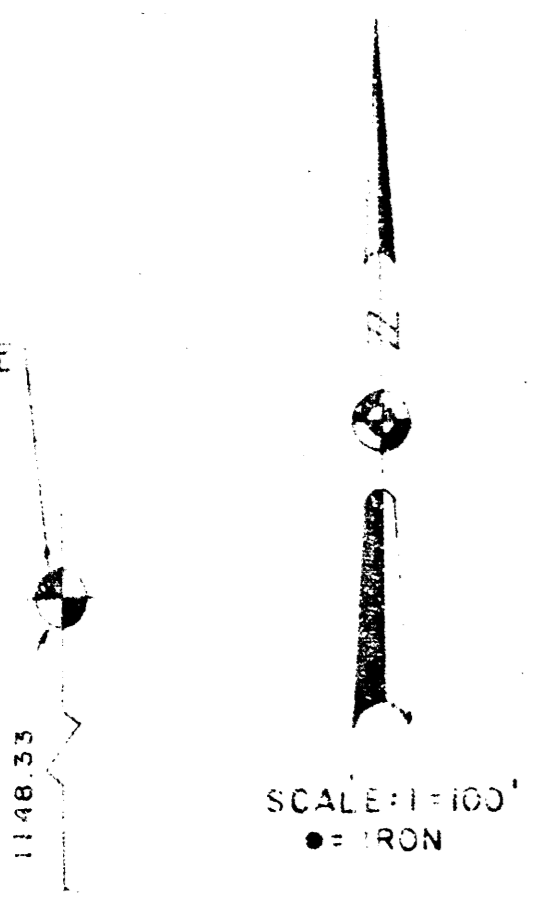
Robert J. Johnson

That the undersigned, the City of Wichita, Kansas, do hereby dedicate to and for the use of the public, the streets, sidewalks, and reserves hereinafter described, to-wit:

Government St., 27th St., 26th St., 25th St., 24th St., 23rd St., 22nd St., 21st St., 20th St., 19th St., 18th St., 17th St., 16th St., 15th St., 14th St., 13th St., 12th St., 11th St., 10th St., 9th St., 8th St., 7th St., 6th St., 5th St., 4th St., 3rd St., 2nd St., 1st St., and the reserves to be shown on the attached plat.

The reserve is platted for sidewalks, open space, recreation and buffer zone, and shall be owned and maintained by the owners of the lots within the plat.

Wichita, Davenport Company



ROCK ROAD

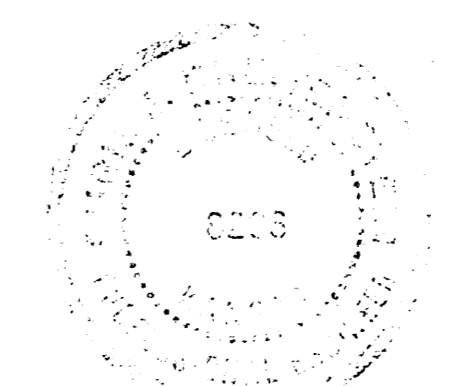
CITY OF WICHITA, KANSAS
DEPARTMENT OF ENGINEERING
DIRECTOR OF ENGR./CITY ENGR.
R.W. BRUGGEMAN

DATE _____

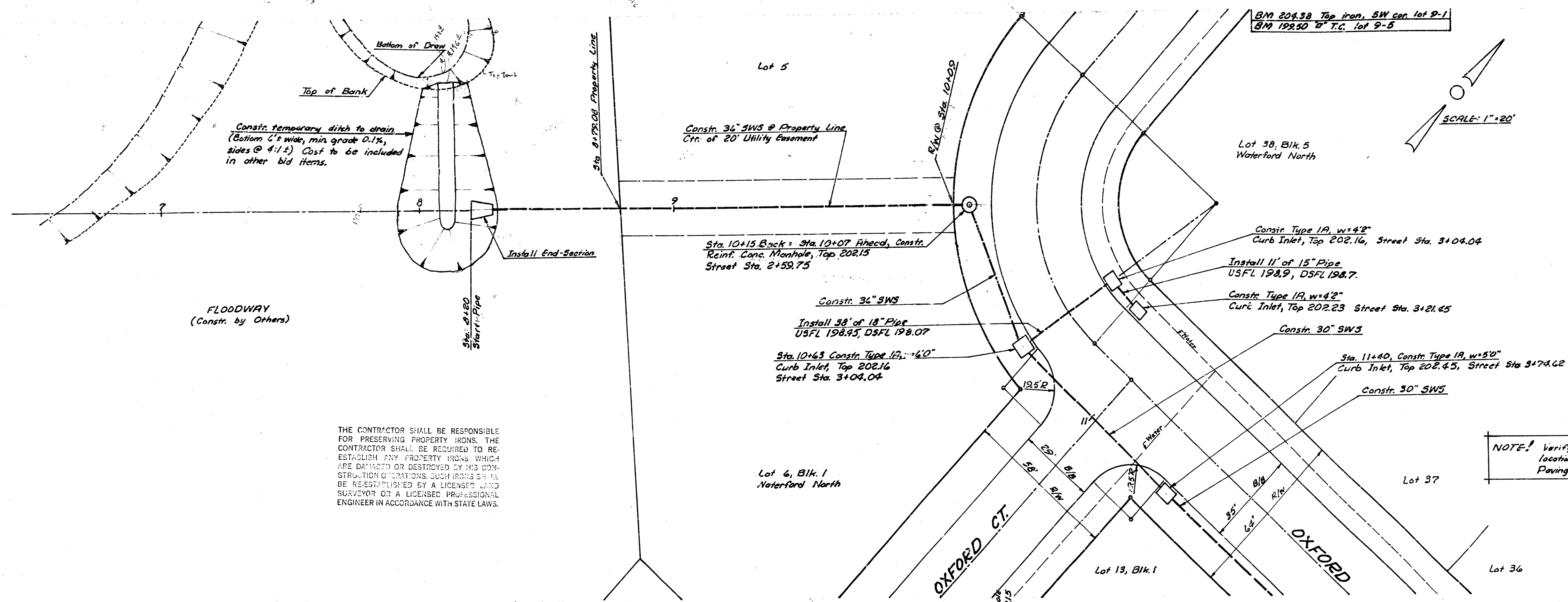
SWS 231

PROJECT NO. 438-76-245-8114-000-000-001

SHEET 1 OF 5

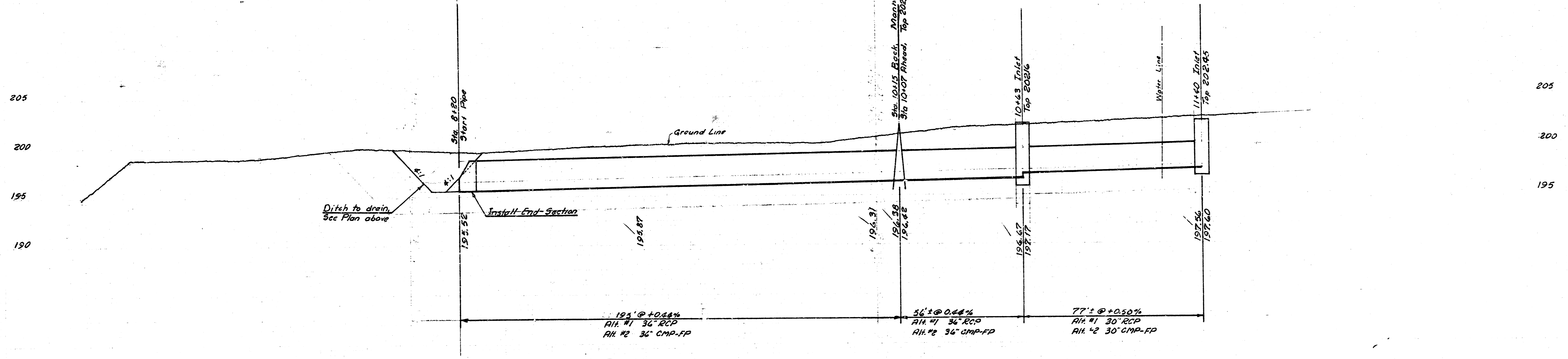


Mid-South Exp. Co. Inc. 10/14/79



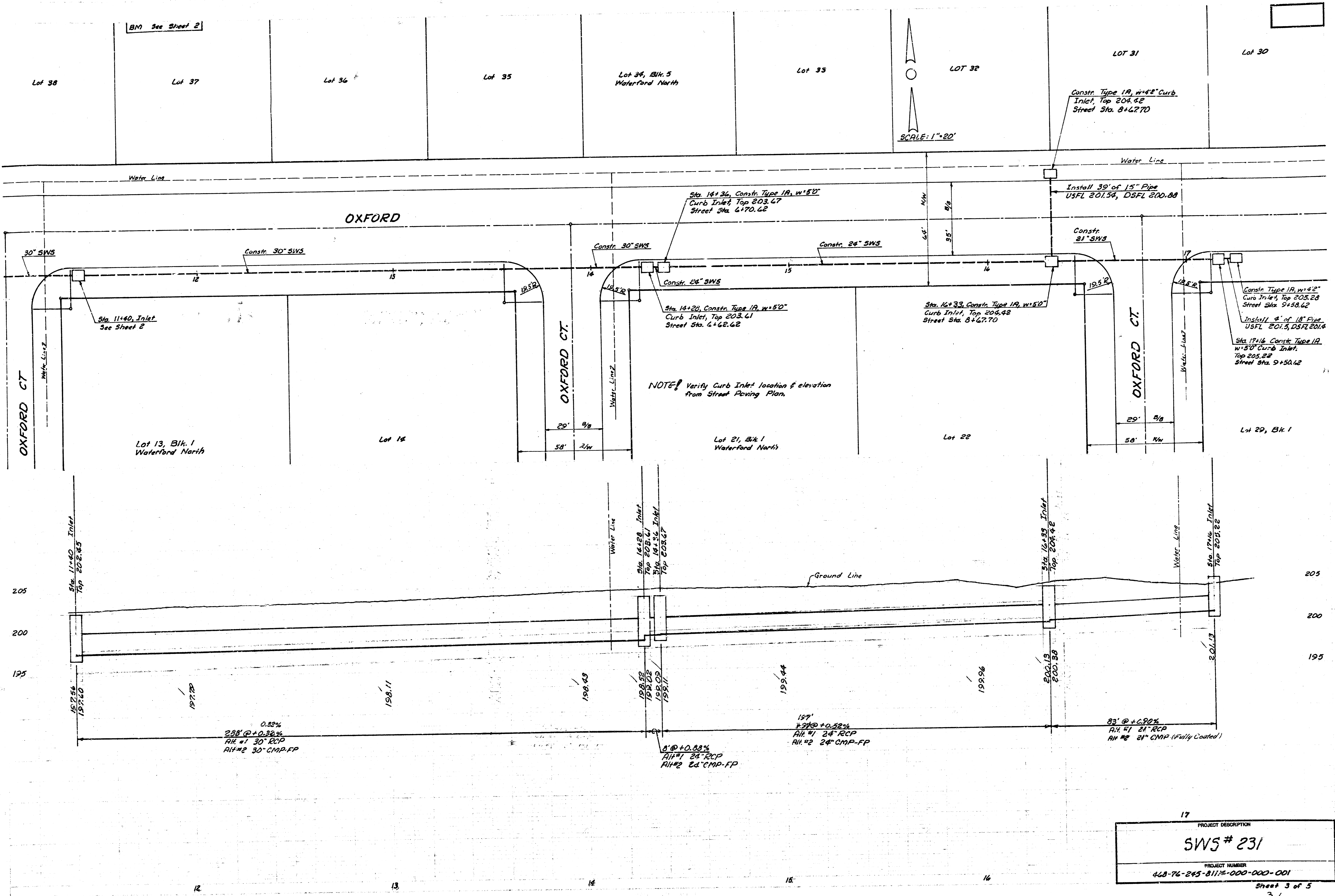
THE CONTRACTOR SHALL BE RESPONSIBLE FOR PRESERVING PROPERTY IRONS. THE CONTRACTOR SHALL BE REQUIRED TO RE-ESTABLISH ANY PROPERTY IRONS WHICH ARE DAMAGED OR DESTROYED BY HIS CONSTRUCTION OPERATIONS. SUCH IRONS SHALL BE RE-ESTABLISHED BY A LICENSED LAND SURVEYOR OR A LICENSED PROFESSIONAL ENGINEER IN ACCORDANCE WITH STATE LAWS.

NOTE: Verify Curb Inlet and Manhole location & elevation from Street Paving Plan.



12
PROJECT DESCRIPTION SWS #231
PROJECT NUMBER 468-76-245-8114-000-000-001
Sheet 2 of 3

M. J. Kerner Eng. Consultant



BM See Sheet 2

Lot 38

Lot 37

Lot 36

Lot 35

Lot 34, Blk. 5
Waterford North

Lot 33

LOT 32

LOT 31

Lot 30

SCALE: 1"=20'

Constr. Type 1A, w/48" Curb
Inlet, Top 204.42
Street Sta. 8+67.70

Water Line

Water Line

OXFORD

30" SWS

Constr. 30" SWS

Constr. 30" SWS

Constr. 24" SWS

Constr. 21" SWS

Sta. 14+36, Constr. Type 1A, w/50"
Curb Inlet, Top 203.67
Street Sta. 6+70.62

Install 39' of 15" Pipe
USFL 201.54, DSFL 200.88

Sta. 11+40, Inlet
See Sheet 2

NOTE: Verify Curb Inlet location & elevation
from Street Paving Plan.

Sta. 14+28, Constr. Type 1A, w/50"
Curb Inlet, Top 203.61
Street Sta. 6+62.62

Sta. 16+33, Constr. Type 1A, w/50"
Curb Inlet, Top 204.42
Street Sta. 8+67.70

Constr. Type 1A, w/42"
Curb Inlet, Top 205.28
Street Sta. 9+58.62

Install 4' of 18" Pipe
USFL 201.5, DSFL 201.4

Sta. 17+16, Constr. Type 1A,
w/50" Curb Inlet,
Top 205.22
Street Sta. 9+50.62

OXFORD CT

OXFORD CT

OXFORD CT

Lot 13, Blk. 1
Waterford North

Lot 14

Lot 21, Blk. 1
Waterford North

Lot 22

Lot 29, Blk. 1

205

200

195

205

200

195

0.52%
238' @ +0.52%
RH #1 30" RCP
RH #2 30" CMP-FP

0.88%
197' @ +0.88%
RH #1 24" RCP
RH #2 24" CMP-FP

197'
197' @ +0.52%
RH #1 24" RCP
RH #2 24" CMP-FP

83' @ +0.90%
RH #1 21" RCP
RH #2 21" CMP (Fully Coated)

17

PROJECT DESCRIPTION

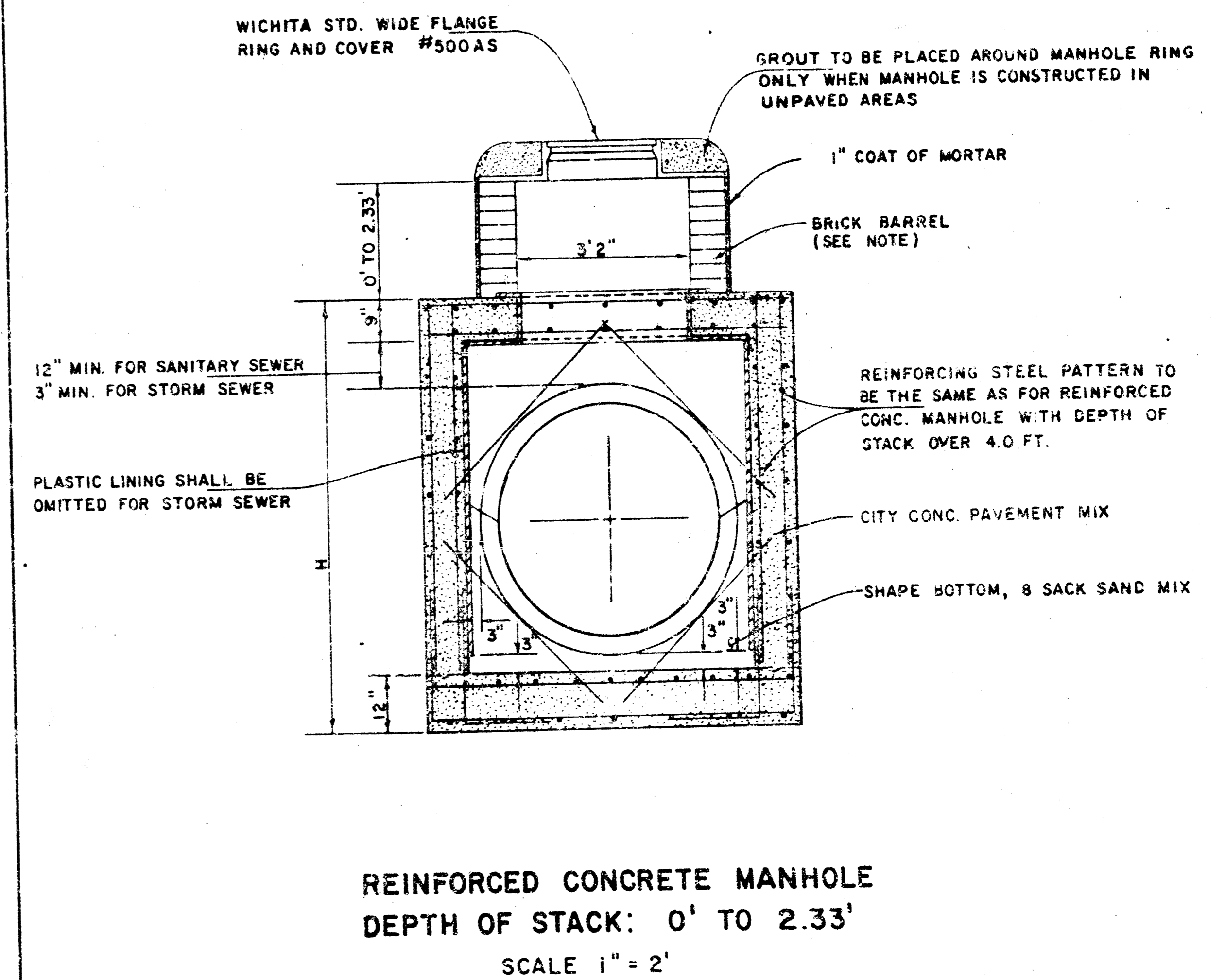
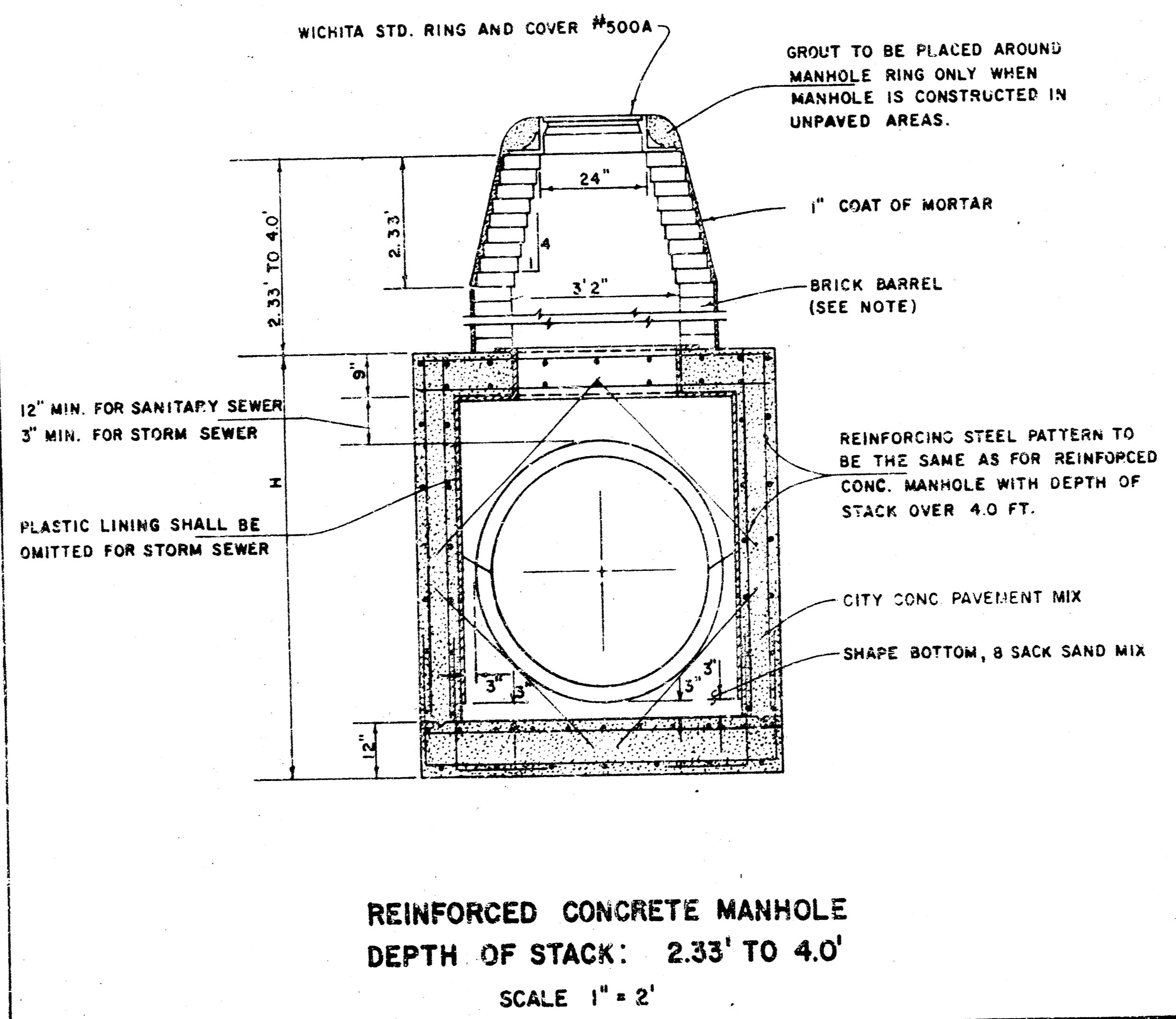
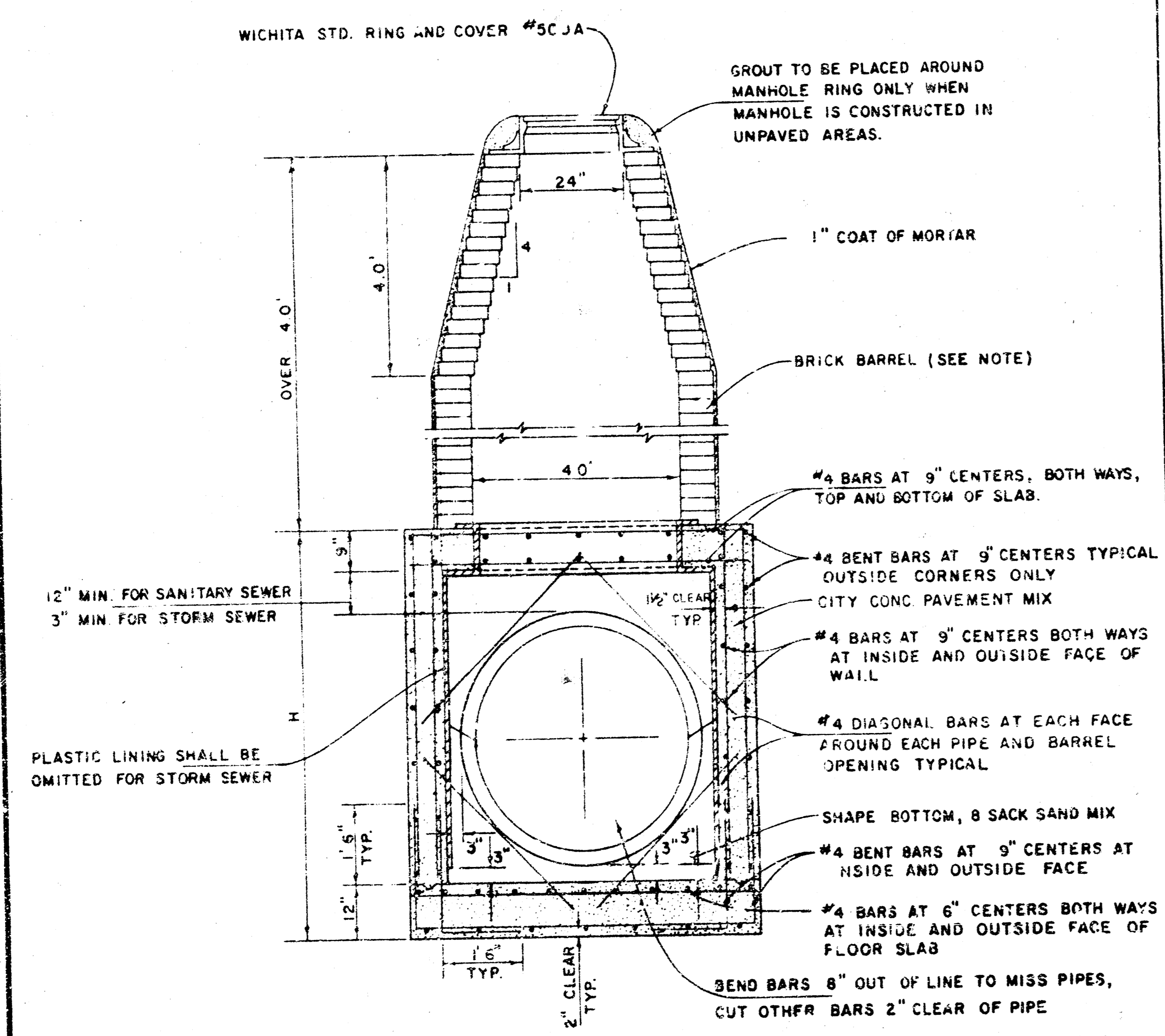
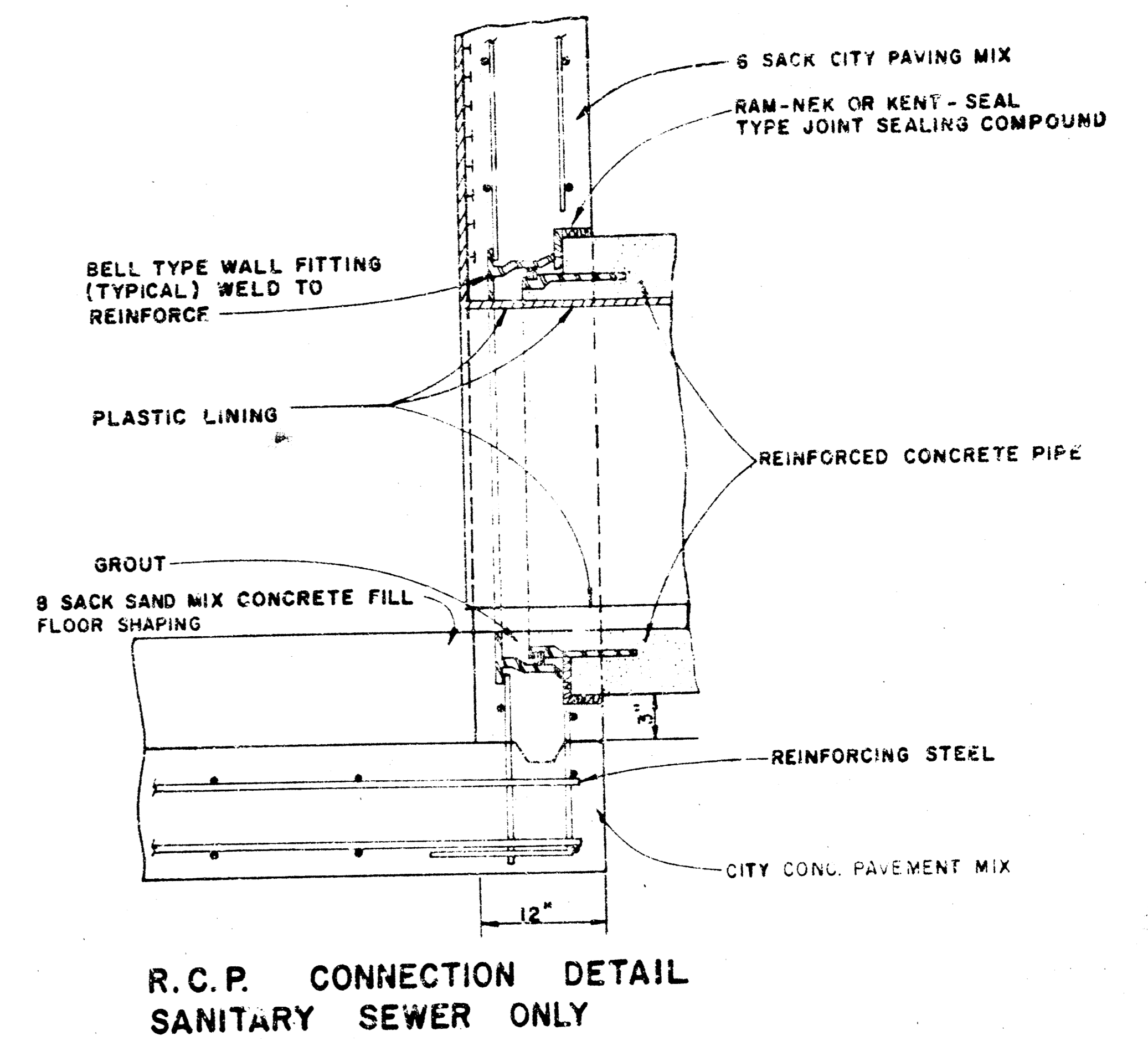
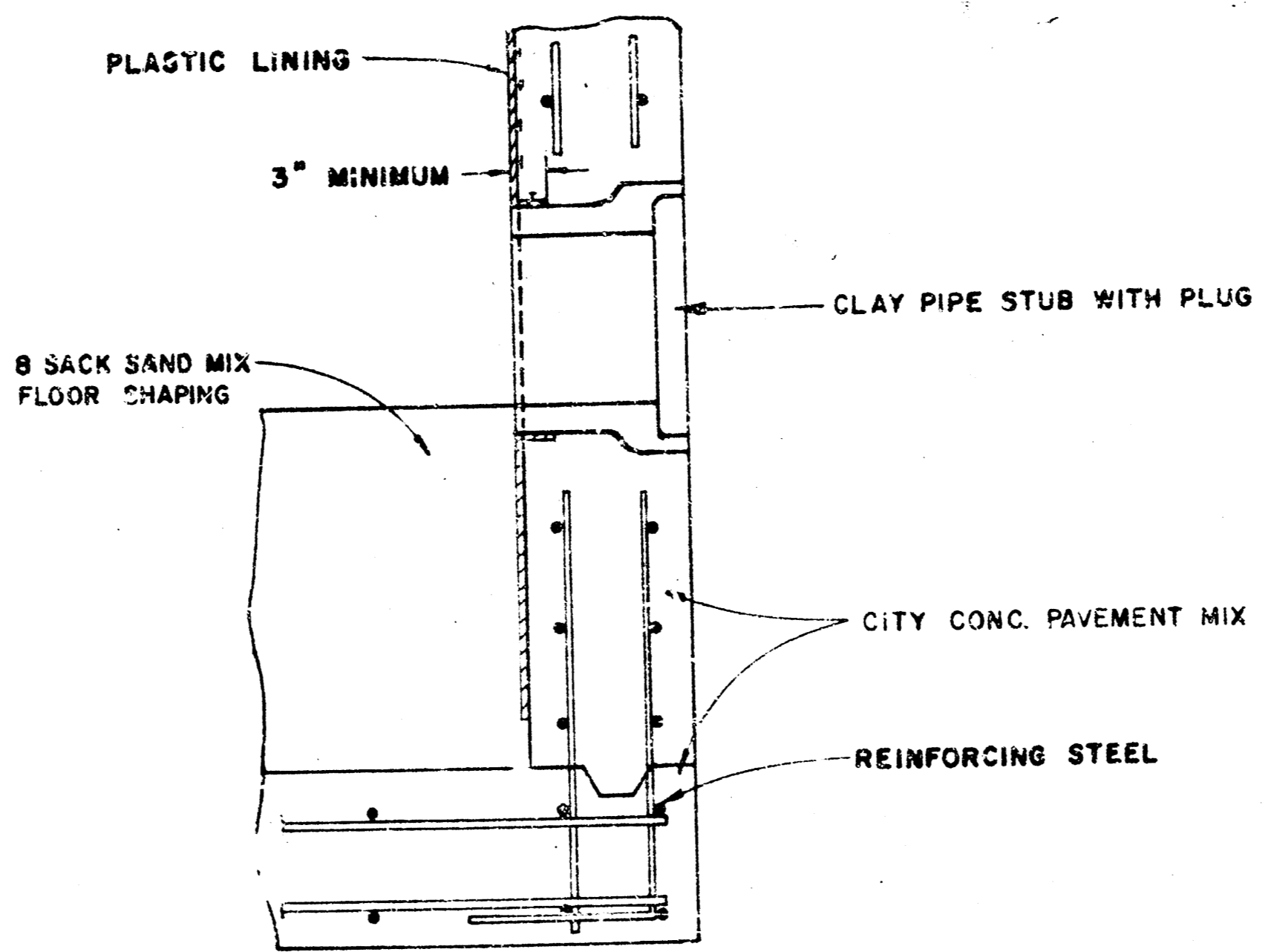
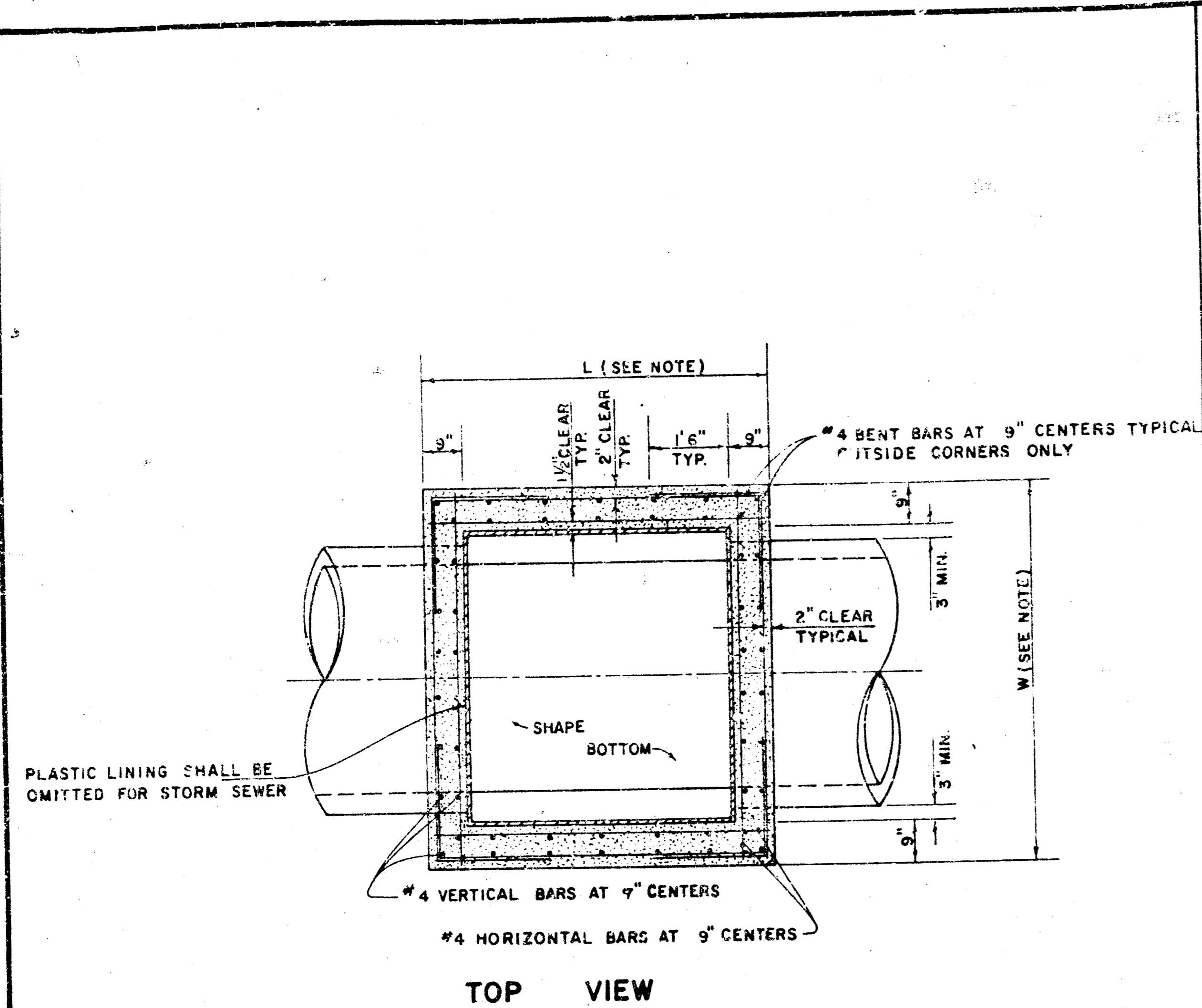
SWS # 231

PROJECT NUMBER

448-76-245-81176-000-000-001

Sheet 3 of 5

3/5



NOTE:
BRICK BARRELS LESS THEN 16' DEEP SHALL HAVE 8" WALLS EXCEPT WHEN LOCATED WITHIN PUBLIC STREET OR ALLEY PAVEMENT THEN THE WALL SHALL BE 12". BRICK BARRELS MORE THEN 16' DEEP SHALL HAVE 12" WALLS. THE "L" AND "W" DIMENSIONS SHALL BE A MINIMUM OF 5'6" FOR BRICK BARRELS WITH 8" WALLS AND 6'2" FOR BRICK BARRELS WITH 12" WALLS.