

SANITARY SEWER IMPROVEMENTS TO SERVE
Sisters of St. Joseph's 5th Addition
 Lot 1, Block A
 Wichita, Sedgwick County, Kansas
 James L. Armour, P.E. Acting City Engineer
 Private Project Number: 1453 PPS (607861)

McCullough Excavation, Inc. - Contractor
 Released 4/24/06
 Per Plan
 Noted in Book J, page 85 5/3/06 by JDL

GENERAL NOTES:

1. Contractor will be required to provide notice to utility companies a minimum of forty-eight (48) hours prior to any excavation, as follows:

Kansas One-Call 687-2470

The Contractor must notify the following in case of an emergency:

- Cox Communications 262-4270
- Kansas Gas Service 1-888-482-4950
- Westar Energy 383-8650
- Aquila Energy 1-800-303-0357
- SBC 268-2245
- City of Wichita Water Dept. 268-4563
- City of Wichita Sewer Maint. 268-4024
- City of Wichita Storm Sewer Maint. 268-4090
- City of Wichita Traffic Maint. 268-4034
- Canoco Pipeline Co. 1-800-231-2551
- Williams Pipeline Co. 529-6600
- Phillips Pipeline Co. 1-800-766-8230

2. Utility service lines, poles, valve boxes, meters, et cetera are to be adjusted as necessary by others prior to construction unless the plans specifically call for their adjustment by the Contractor or unless the plans specifically identify a utility to be adjusted by its owner during construction. Existing utilities and their location, as shown on the plans represent the best information obtainable for design and shall be field verified. The contractor will be required to work around existing utilities within the right-of-way which do not conflict with proposed construction.

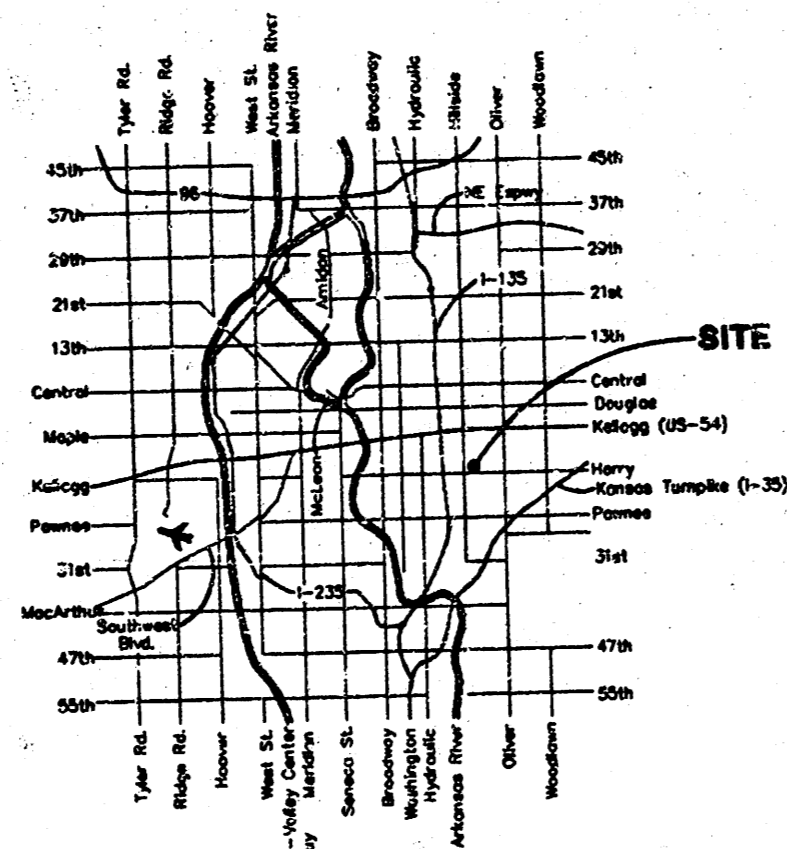
3. Contractor shall not start work on the project until the project inspector is assigned to the project and is present on the site. Contractor shall not start on the project until all necessary bonds and permits have been obtained. Bonds may include but are not limited to Statutory, Performance & Maintenance for areas in public right-of-way and easement. For projects within the City of Wichita contact Tom Mason (268-4574). Any work done without inspection will be required to be uncovered for inspection.

4. Rubble from the removal of miscellaneous structures and excess excavation which is to be wasted shall be disposed of on sites to be provided by the Contractor. These sites shall be approved by the Engineer as to suitability, appearance and site location. Locations that, in the opinion of the Engineer, will leave an unsightly appearance will not be approved. All disposal sites must be approved by the Kansas Department of Health and Environment. Material either stockpiled or disposed of in a flood plain would require a Kansas State Board of Agriculture permit. Any material dumped in waters of the United States or wetlands is subject to U.S. Corps of Engineers permitting regulations. Any material buried or stockpiled beyond approved construction limits would require additional archaeological investigations unless buried in a previously approved borrow location.

5. All sanitary sewers shall be installed in accordance with the most recent edition of City of Wichita, Kansas Standard Specifications for the Construction of City Projects.

LEGAL DESCRIPTION

That part of Lot 1, Block A, and Part of RESERVE "A", Sisters of St. Joseph 5th Addition Wichita, Sedgwick County, Kansas described as Beginning at the S.W. corner of said Lot 1, thence N00°02'00"E along the West line of said Lot 1, 395.00 feet; thence N89°51'40"E, 513.94 feet to a point on the East line of said RESERVE "A"; thence S00°00'00"E along the East line of said RESERVE "A", 275.00 feet; thence N89°52'31"E, 250.31 feet, more or less to a point on the Westerly Right-of-way line of Bluffview Drive as dedicated in Block J, Hilltop Manor, A Regiot of Parts of Hilltop Manor and Hilltop Manor 2nd Addition, Sedgwick County, Kansas; thence S40°07'05"W along said Westerly Right-of-way line, 174.74 feet to a P.C. in said Westerly Right-of-way line, thence Southwesterly along said Westerly Right-of-way line, being a curve to the left, having a radius of 735.00 feet, an arc distance of 286.69 feet to the most Southerly corner of said Block J; thence N00°01'50"E, 232.38 feet; thence N00°00'00"E, 30.00 feet; thence S89°51'40"W, 514.35 feet to the point of beginning.



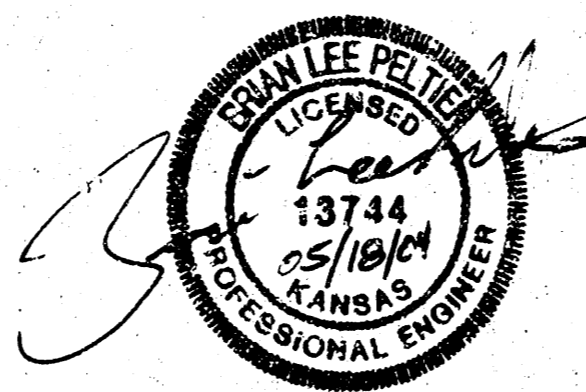
Vicinity Map

SHEET INDEX:

- Title/Plan/Profile Sheet 1
- Standard Manhole Detail 2
- Ring & Cover Detail 3
- Copy of Plat 4

BENCHMARKS:

City of Wichita benchmark disc - NW corner of intersection of Harry and Bluffview on base of traffic signal pole. 9.50' north of north curb 42.50' North of centerline of Harry 46.50' West of centerline of Bluffview Elev. = 152.22 City Datum

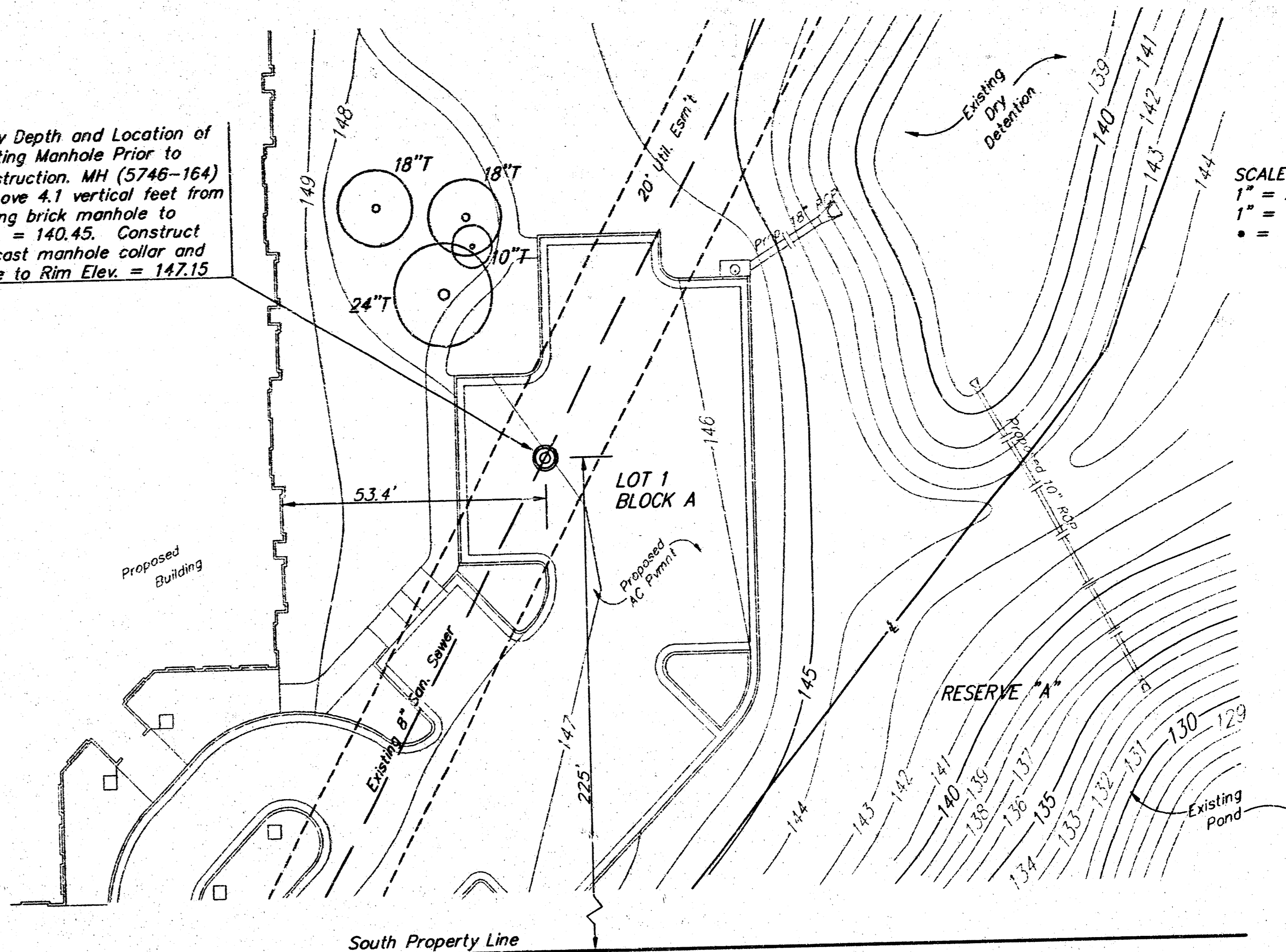


APPROVED AS NOTED
 BY CITY ENGINEER OF WICHITA
 Sanitary Sewers URH 5/18/04

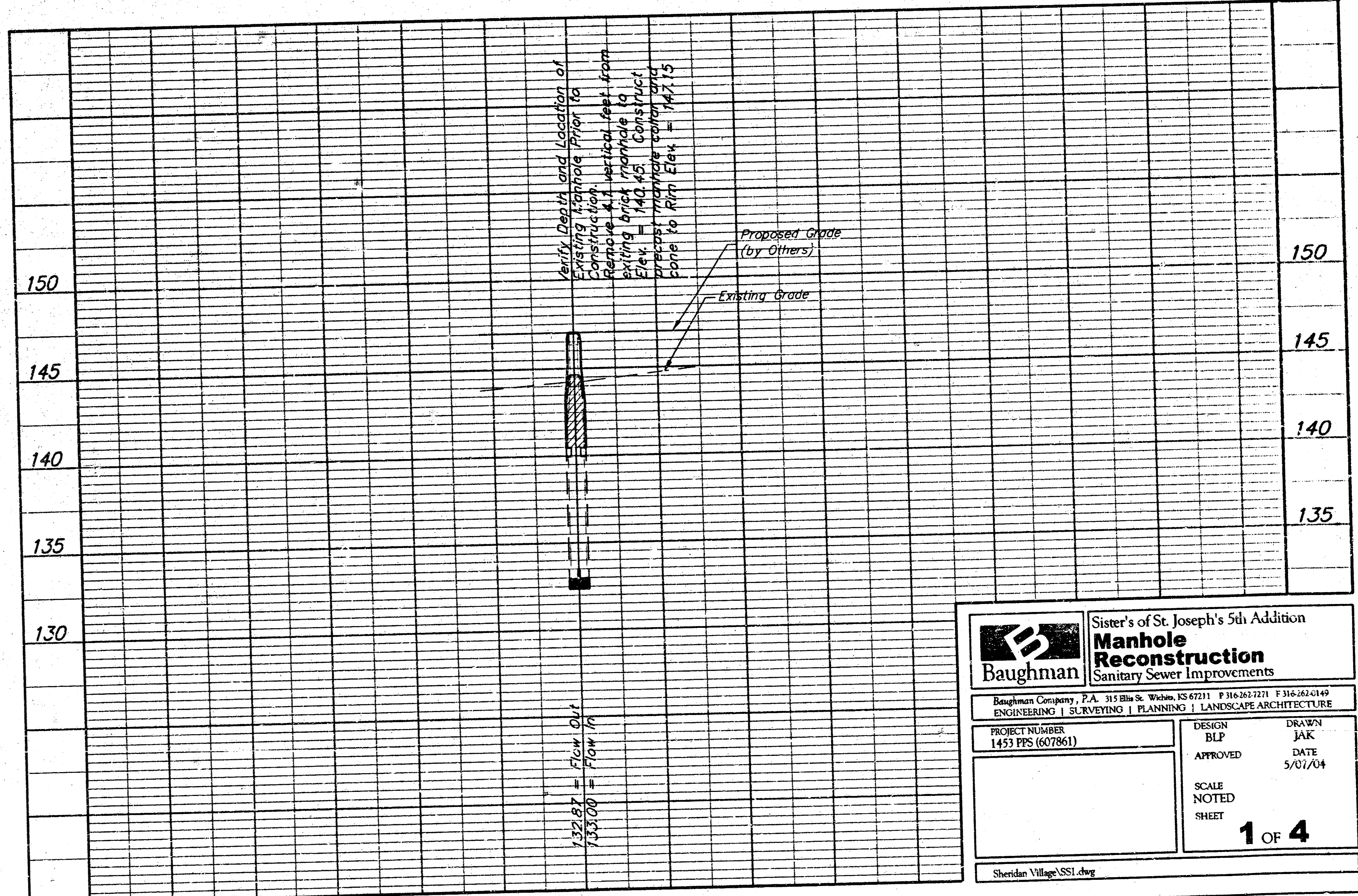
NOTE TO CONTRACTORS

Installation, inspection and testing for this project is to be provided by a Licensed Consulting Engineering Firm under contract with the Owner/Developer. Said inspection to be in accordance with the City of Wichita standard construction engineering practices and the City of Wichita standard construction engineering practices. No work shall be certified by a Licensed Professional Engineer. No work shall be performed in dedicated easements or public right-of-way by the Contractor without such inspection nor shall any work be commenced without written authorization by the City Engineer. All Construction and Materials shall comply with the City of Wichita Specifications and Standards (on file and available in the City Engineer's Office).

Verify Depth and Location of Existing Manhole Prior to Construction. MH (5746-164) Remove 4.1 vertical feet from existing brick manhole to Elev. = 140.45. Construct precast manhole collar and cone to Rim Elev. = 147.15



SCALE:
 1" = 20' HORIZONTAL
 1" = 5' VERTICAL
 • = IRON



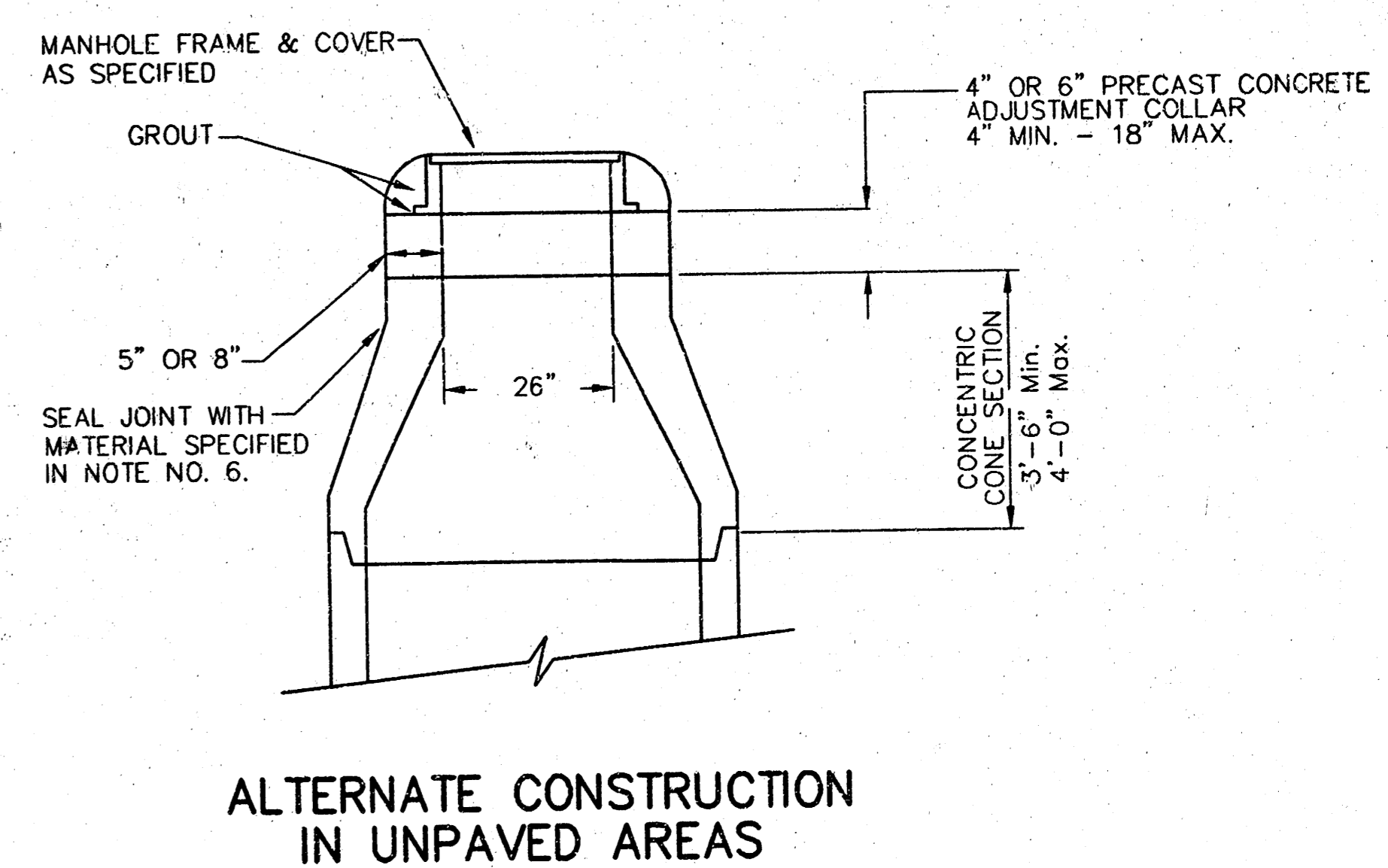
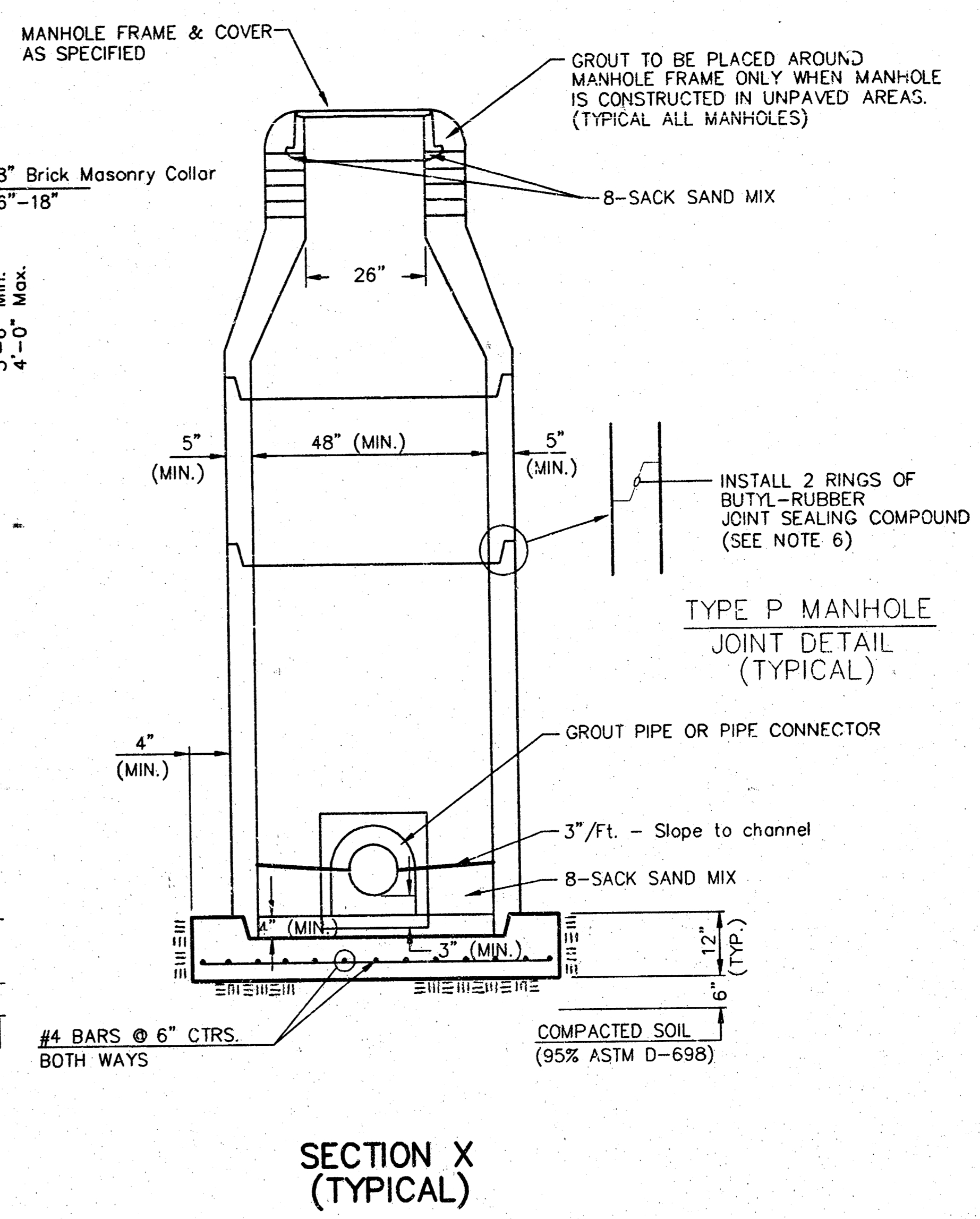
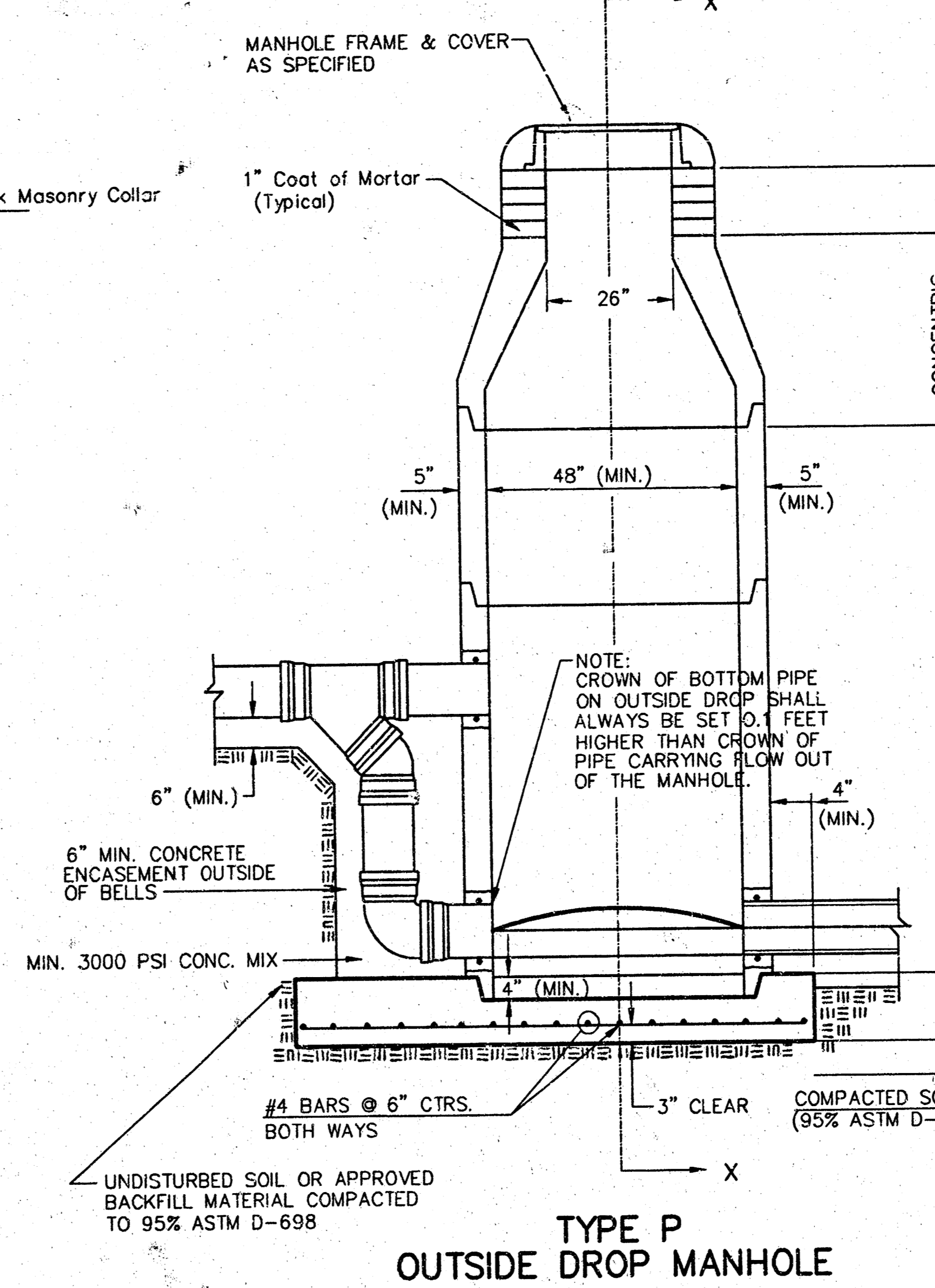
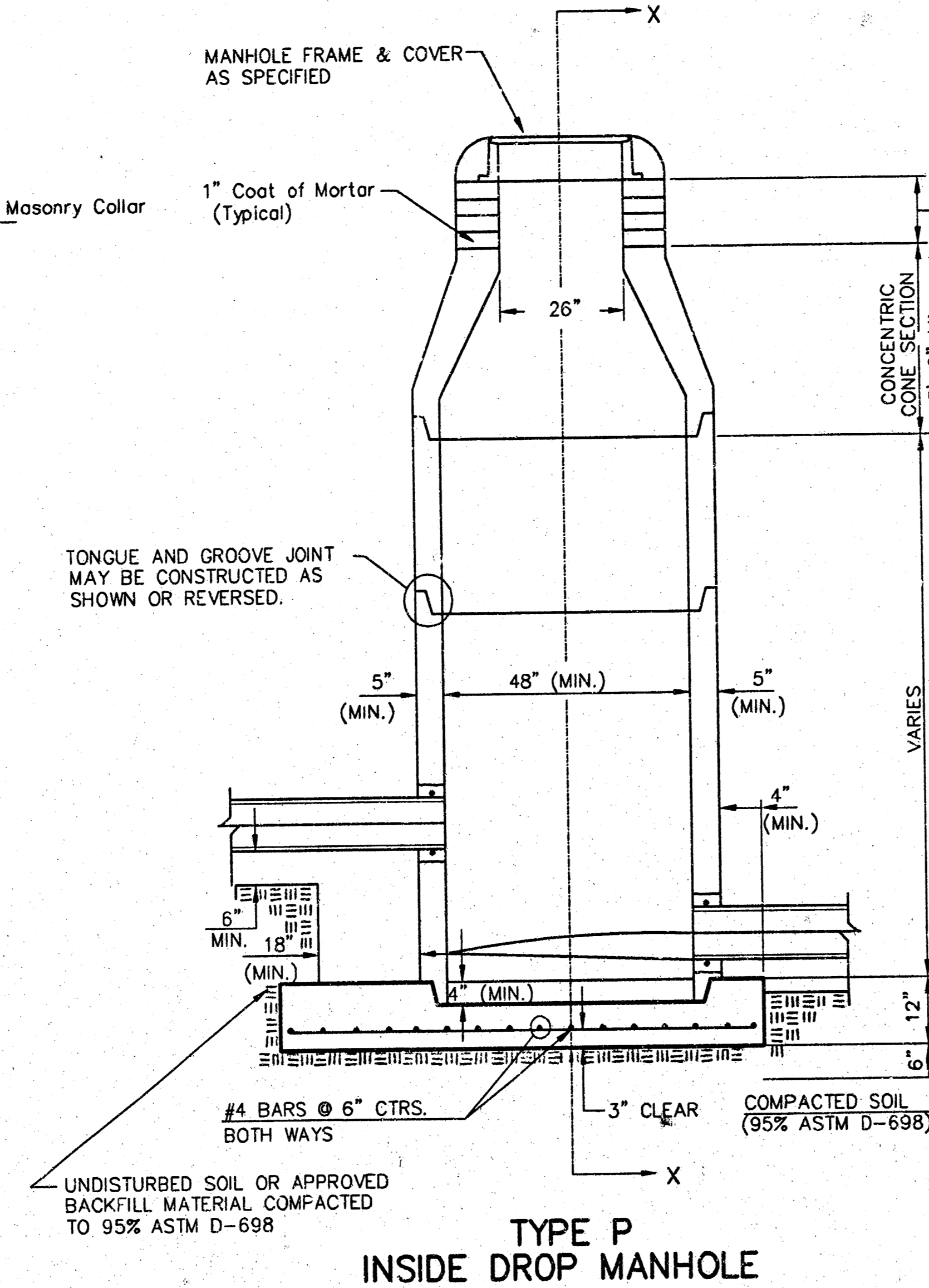
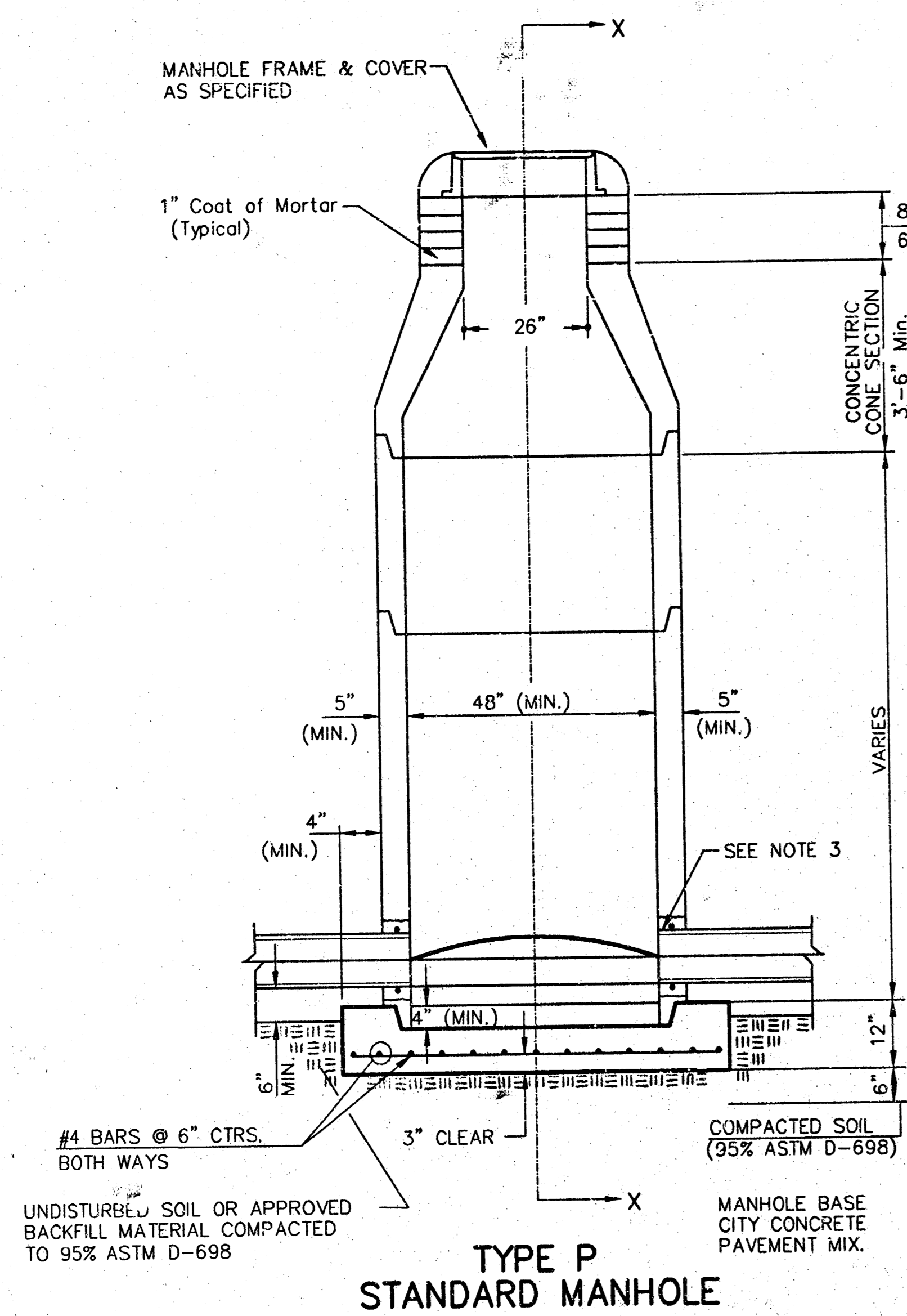
Sisters of St. Joseph's 5th Addition Manhole Reconstruction Sanitary Sewer Improvements	
Baughman Company, P.A. 315 8th St. Wichita, KS 67211 P 316-263-7211 F 316-262-0449 ENGINEERING SURVEYING PLANNING LANDSCAPE ARCHITECTURE	
PROJECT NUMBER 1453 PPS (607861)	DESIGN BLP DRAWN JAK DATE 5/07/04
SCALE NOTED SHEET	1 OF 4

J-85 5746-164

Depth 139'

14 02 31 36

SEWER APPURTENANCES DETAILS



- GENERAL NOTES**
- PRECAST MANHOLE NOTES**
1. ALL PRECAST CONCRETE MANHOLE SECTIONS SHALL CONFORM TO THE LATEST REVISIONS OF A.S.T.M. C478 AS MODIFIED BY THE SPECIFICATIONS.
 2. NON-SHRINK GROUT SHALL BE NON-METALLIC TYPE.
 3. APPROVED FLEXIBLE WATERSTOP GASKETS SHALL BE INSTALLED TO JOIN THE SEWER TO THE MANHOLE WALL WHEN A.B.S. COMPOSITE PIPE OR P.V.C. PIPE IS USED. FOR OTHER TYPES OF PIPE THE SEWER SHALL BE GROUTED IN PLACE WITH NON-SHRINK GROUT. THE SEWER PIPE SHALL BE SUPPORTED WITH CONCRETE ENCASEMENT A MINIMUM OF 3 FEET FROM THE MANHOLE WALL AND TO THE FIRST JOINT FOR V.C.P. SUCH THAT THE JOINT REMAINS FLEXIBLE.
 4. ALL INSIDE SURFACES OF THE CONCRETE MANHOLE WHICH WOULD BE EXPOSED TO SEWER GAS SHALL BE COATED WITH 2 COATS TNEPEC SERIES 66 HI-BUILD EPOXYLINE, DRY THICKNESS OF 8 MILS (MIN.).
 5. EXTERIOR MANHOLE WALLS SHALL BE COATED WITH 1 COAT MOBILARMA 633 BITUMINOUS COATING.
 6. JOINT SEALING COMPOUND SHALL BE KENT SEAL NO. 2 OR APPROVED EQUAL.
 7. PRECAST MANHOLES SHALL BE SET AT LEAST 4 INCHES INTO THE MANHOLE BASE.
 8. TOP OF MANHOLE FLOOR SLAB SHALL BE AT LEAST 3 INCHES BELOW THE FLOW LINE OF THE OUTLET PIPE TO INSURE SUFFICIENT MINIMUM THICKNESS OF SHAPED INVERT.
 9. LIFTING HOLES SHALL BE FILLED WITH NON-SHRINK GROUT AND THE INTERIOR SURFACE COATED AS SPECIFIED.
 10. MORTAR USED IN MASONRY CONSTRUCTION SHALL CONTAIN 8 SACKS OF CEMENT PER CUBIC YARD. CONCRETE USED IN MANHOLE BASES SHALL CONFORM TO THE REQUIREMENTS OF CONCRETE FOR CONCRETE PAVEMENT CONSTRUCTION AS SPECIFIED IN THE CITY STANDARD PAVING SPECIFICATIONS USING CITY CONCRETE PAVEMENT MIX WITHOUT AIR ENTRAINING ADMIXTURE. MORTAR SHALL BE PLACED AROUND THE MANHOLE RING AS SHOWN ON THE DRAWINGS WHEN MANHOLES ARE CONSTRUCTED IN UNPAVED AREAS. MANHOLES CONSTRUCTED WHERE PIPE SIZES ARE SMALLER THAN 24" SHALL HAVE AN INSIDE DIAMETER OF 4". MANHOLES CONSTRUCTED WHERE PIPE SIZES ARE 24" OR LARGER SHALL HAVE AN INSIDE DIAMETER OF 5". COMPLETED MANHOLE SHALL BE WITHOUT LEAKS AND WATER TIGHT.

11. REINFORCING STEEL SHALL BE INSTALLED IN THE MANHOLE BASES AND SHALL CONSIST OF NO. 4 BARS PLACED ON 6" CENTERS IN BOTH DIRECTIONS. THE MANHOLE BASE REINFORCEMENT SHALL BE PLACED AT LEAST 3" ABOVE THE BOTTOM OF THE MANHOLE BASE. ALL COSTS FOR FURNISHING AND INSTALLING REINFORCING STEEL SHALL BE INCLUDED IN THE UNIT PRICE BID FOR THE MANHOLE.
12. OPENINGS SHALL BE CUT INTO THE MANHOLE WALL WHEN OUTSIDE DROPS ARE CONSTRUCTED ON EXISTING MANHOLES. SUCH OPENINGS CUT INTO EXISTING MANHOLES SHALL BE AS SMALL AS PRACTICAL TO FACILITATE INSTALLING AND GROUTING THE NEW PIPE IN PLACE. WATERSTOP GASKETS SHALL BE USED WITH P.V.C. AND A.B.S. COMPOSITE PIPE. THE NEW PIPE SHALL BE GROUTED INTO THE OPENING USING AN APPROVED NON-SHRINK GROUT FOR THE FULL MANHOLE WALL THICKNESS. THE EXTERIOR OF THE COMPLETED CONNECTION SHALL BE SEALED WITH AN APPROVED BITUMINOUS COATING SUCH THAT THE CONNECTION WILL BE WATER TIGHT. FLOOR OF MANHOLE SHALL BE MODIFIED TO FORM NEW FLOW CHANNEL FOR THE NEW CONNECTION AS INDICATED BY THE DRAWING. THIS WORK, INCLUDING MODIFICATION OF MANHOLE FLOOR, SHALL BE PAID FOR AT THE UNIT PRICE BID FOR OUTSIDE DROP STACK CONSTRUCTED ON EXISTING MANHOLE.
13. THE FLOORS OF ALL MANHOLES SHALL BE SHAPED WITH FLOW CHANNELS SUCH THAT THE MANHOLES WILL BE SELF CLEANING AND FREE OF AREAS WHERE SOLIDS COULD BE DEPOSITED AS SEWAGE FLOWS THROUGH THE MANHOLE FROM ALL INLET PIPES TO THE OUTLET PIPE. FLOW CHANNELS SHALL BE FORMED TO MATCH THE BOTTOM HALVES OF THE INFLOWING PIPES AND THE OUTFLOWING PIPE AS SHOWN BY THE DRAWINGS EXCEPT FOR INSIDE DROP MANHOLES. FLOW CHANNELS FOR INSIDE DROP MANHOLES SHALL BE CONSTRUCTED AS INDICATED BY THE DRAWING. MANHOLE FLOORS SHALL HAVE SLOPES OF 3 INCHES PER FOOT IN THE AREAS OUTSIDE OF THE FLOW CHANNELS SLOPED TOWARD THE FLOW CHANNELS. PIPES LAID THROUGH MANHOLES SHALL HAVE THE TOP HALF REMOVED TO NEAT LINES FOR THE FULL INSIDE DIAMETER OF THE MANHOLE. MANHOLE FLOORS SHALL THEN BE GRADED AROUND THE BOTTOM HALF OF THE PIPE WHICH FORMS THE FLOW CHANNEL.
14. PIPES INSTALLED WITHIN THE EXCAVATION MADE FOR THE MANHOLE SHALL BE CRADLED WITH CONCRETE TO THE LIMITS OF THE MANHOLE EXCAVATION. WHEN CLAY PIPE IS USED, THE CRADLE SHALL EXTEND TO THE FIRST JOINT OUTSIDE THE MANHOLE. THE CRADLE SHALL BE TERMINATED AT THE CLAY PIPE JOINT IN A MANNER WHICH WILL MAINTAIN THE FLEXIBILITY OF THE JOINT. COST OF CRADLE WITHIN MANHOLE EXCAVATION OR TO CLAY PIPE JOINTS ADJACENT TO MANHOLE SHALL BE INCLUDED IN THE UNIT PRICE BID FOR THE MANHOLE.

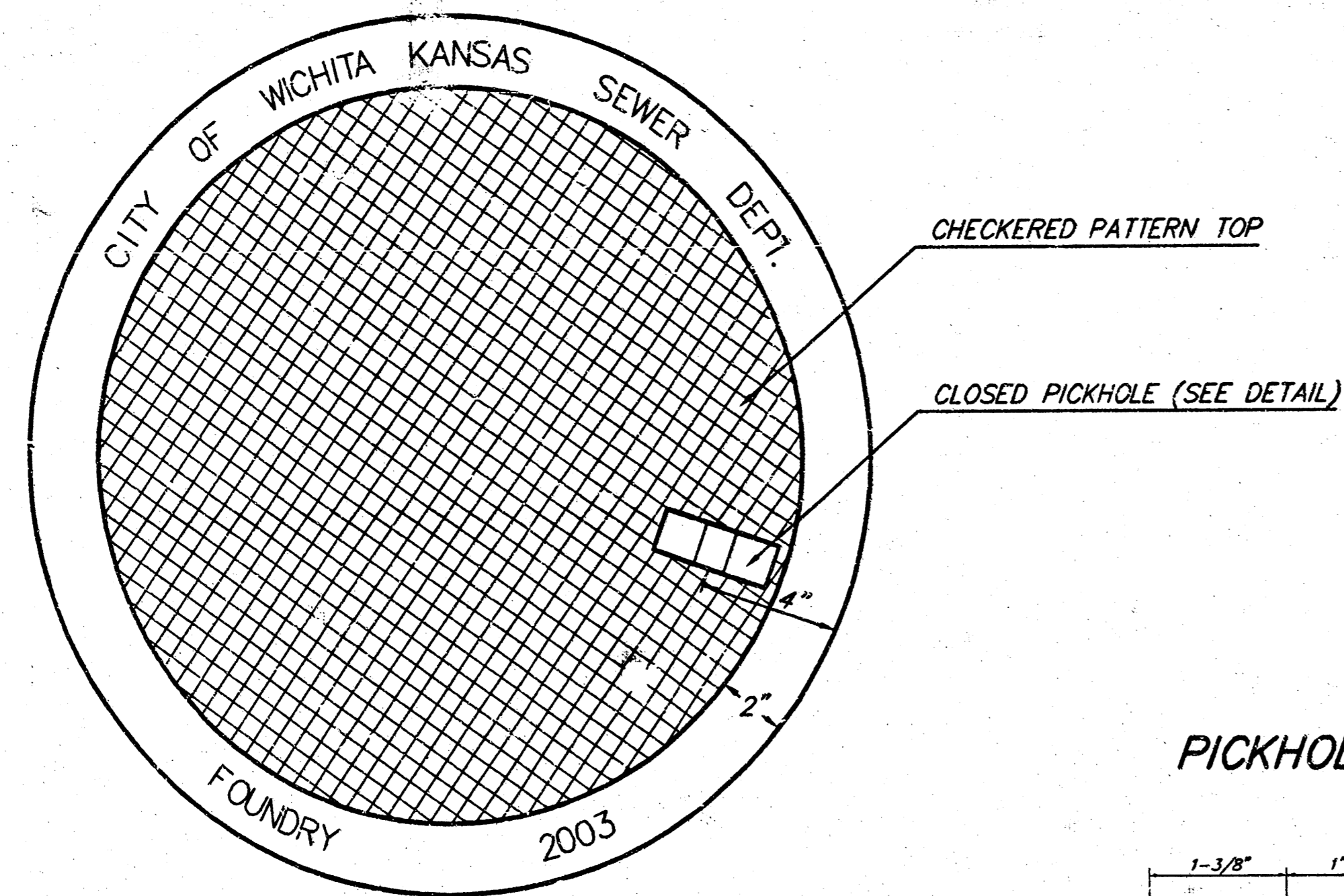
15. MANHOLE COVER CASTINGS AND MANHOLE FRAME CASTINGS SHALL CONFORM TO THE REQUIREMENTS AS INDICATED IN THE STANDARD SPECIFICATIONS AND AS SHOWN IN THE STANDARD DETAIL DRAWING.
16. THE VERTICAL DROP IN INSIDE DROP MANHOLES SHALL NOT EXCEED 2' FOR INFLOWING PIPES SIZED 12" OR SMALLER AND 2' FOR INFLOWING PIPES LARGER THAN 12". THE CROWNS OF INFLOWING PIPES SHALL NEVER BE SET LOWER THAN THE CROWN OF THE OUTFLOWING PIPE.
17. STANDARD MANHOLES AND STANDARD INSIDE DROP MANHOLES SHALL BE BID AS STANDARD MANHOLES FOR THE TYPE AND DIAMETER INDICATED. OUTSIDE DROP MANHOLES SHALL BE BID AS STANDARD OUTSIDE DROP MANHOLES FOR THE TYPE AND DIAMETER INDICATED. ALL MANHOLE DIAMETERS WILL BE 4' UNLESS INDICATED OTHERWISE.
18. A BRICK MASONRY COLLAR SHALL BE INSTALLED BETWEEN THE CAST IRON FRAME AND THE CONCENTRIC CONE. THE COLLAR WILL HAVE 8" WALLS AND A VERTICAL HEIGHT OF 6" MINIMUM AND 18" MAXIMUM. A 1" COAT OF MORTAR WILL BE PLASTERED ON THE OUTSIDE OF THE COLLAR. THE USE OF PRE-CAST CONCRETE SPACERS FOR MANHOLE TOP ADJUSTMENT IS ALSO ALLOWED.

		City of Wichita STANDARD MANHOLE DETAILS Sewer Appurtenances	
		Baughman Company, P.A. 315 5th St. Wichita, KS 67211 P 316-262-7271 F 316-262-0149 ENGINEERING SURVEYING PLANNING LANDSCAPE ARCHITECTURE	
REVISIONS	DESIGN Staff	DRAWN Staff	DATE 5/07/04
APPROVED		SCALE NONE	
SHEET		2 OF 4	
LVMH			

MANHOLE COVER
Weight = 180 Lbs.

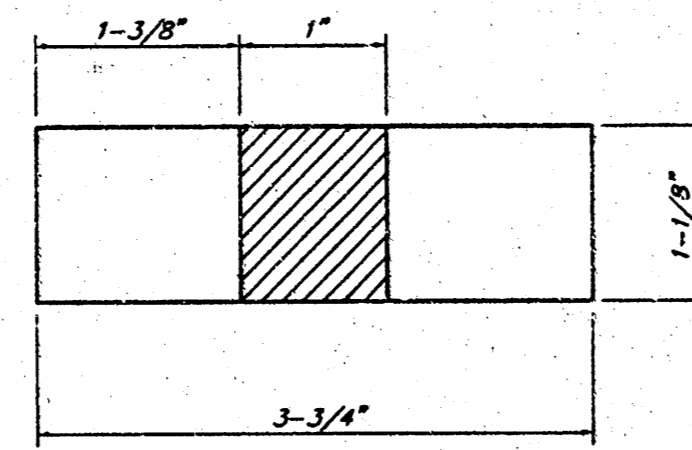
MANHOLE FRAME AND COVER DETAIL

ADOPTED AS STANDARD DESIGN BY
CITY OF WICHITA, KANSAS

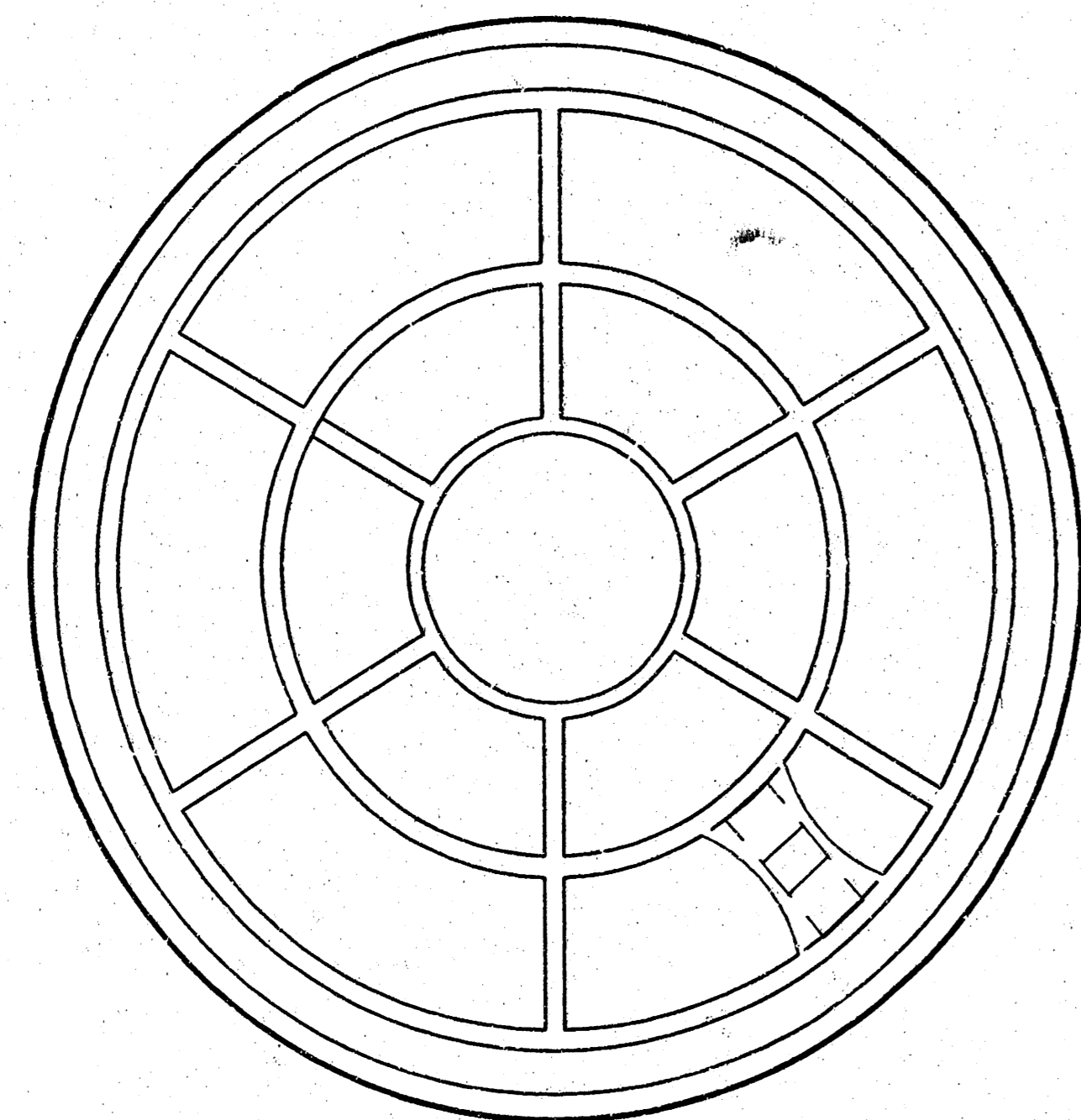


TOP VIEW

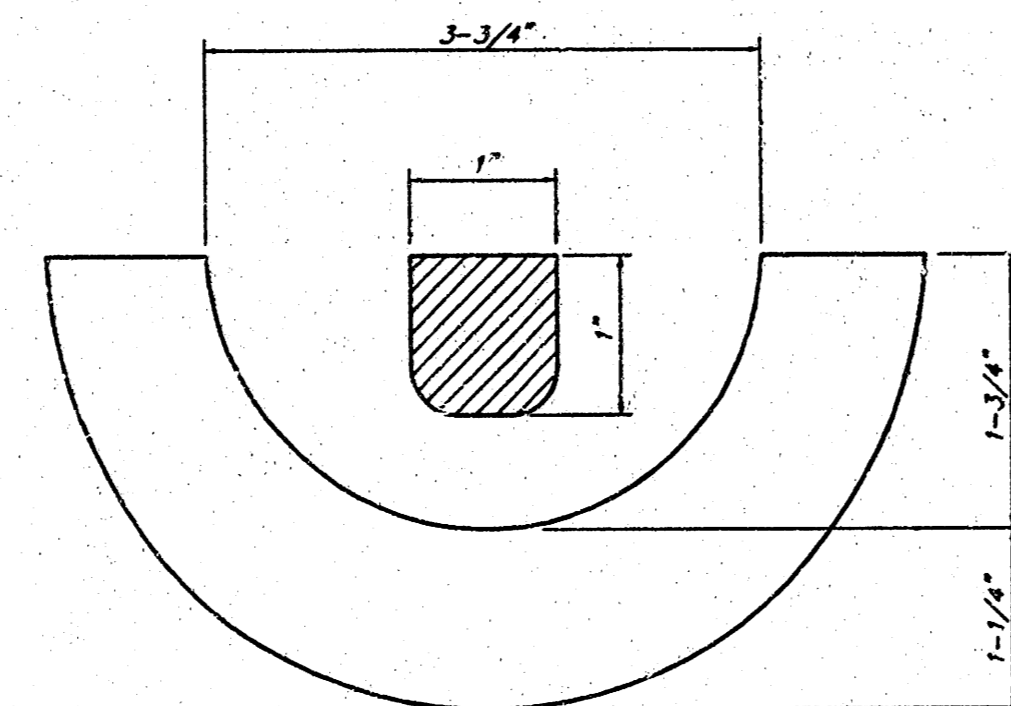
PICKHOLE DETAIL



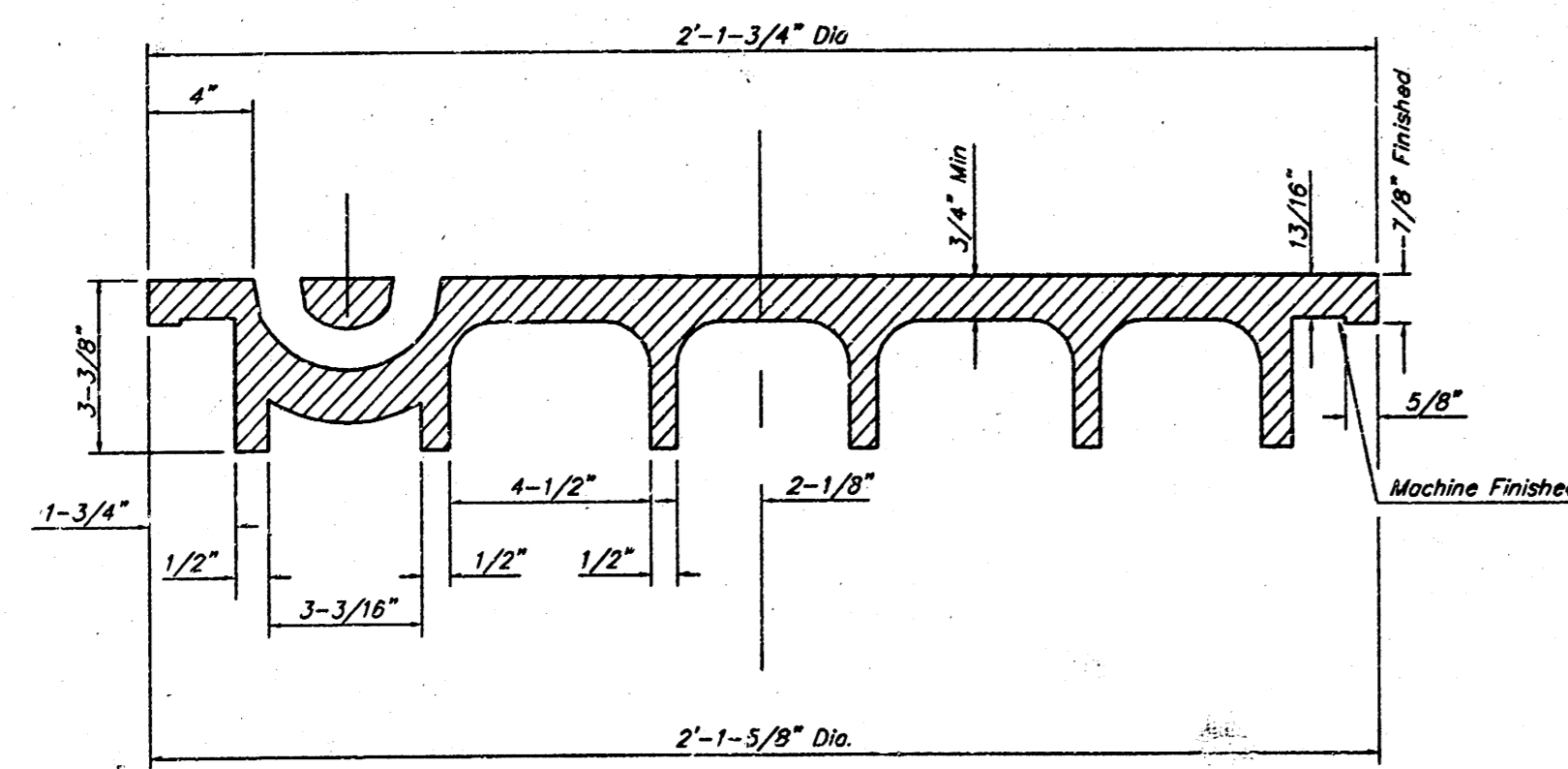
TOP VIEW



BOTTOM VIEW

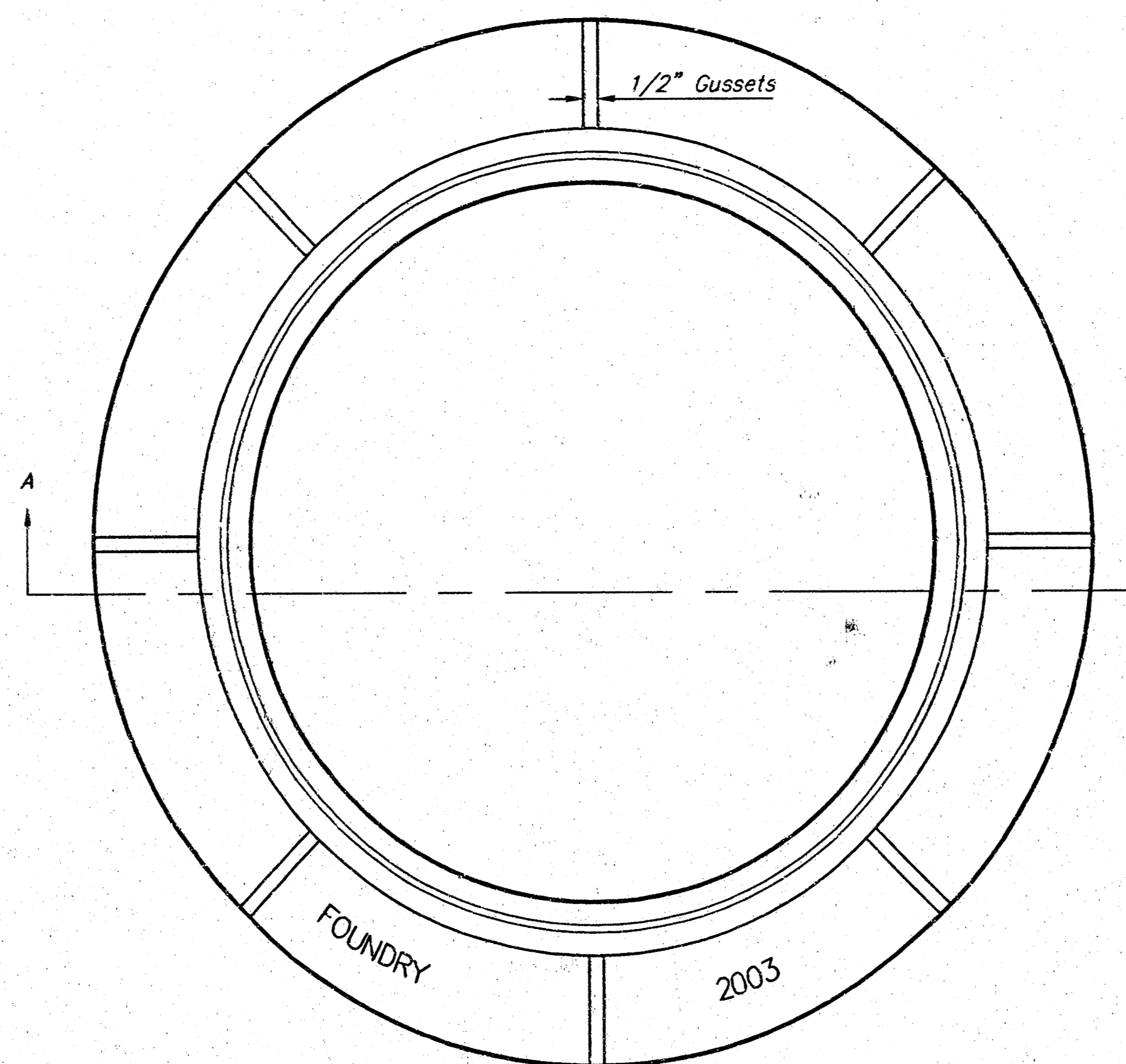


SECTION VIEW

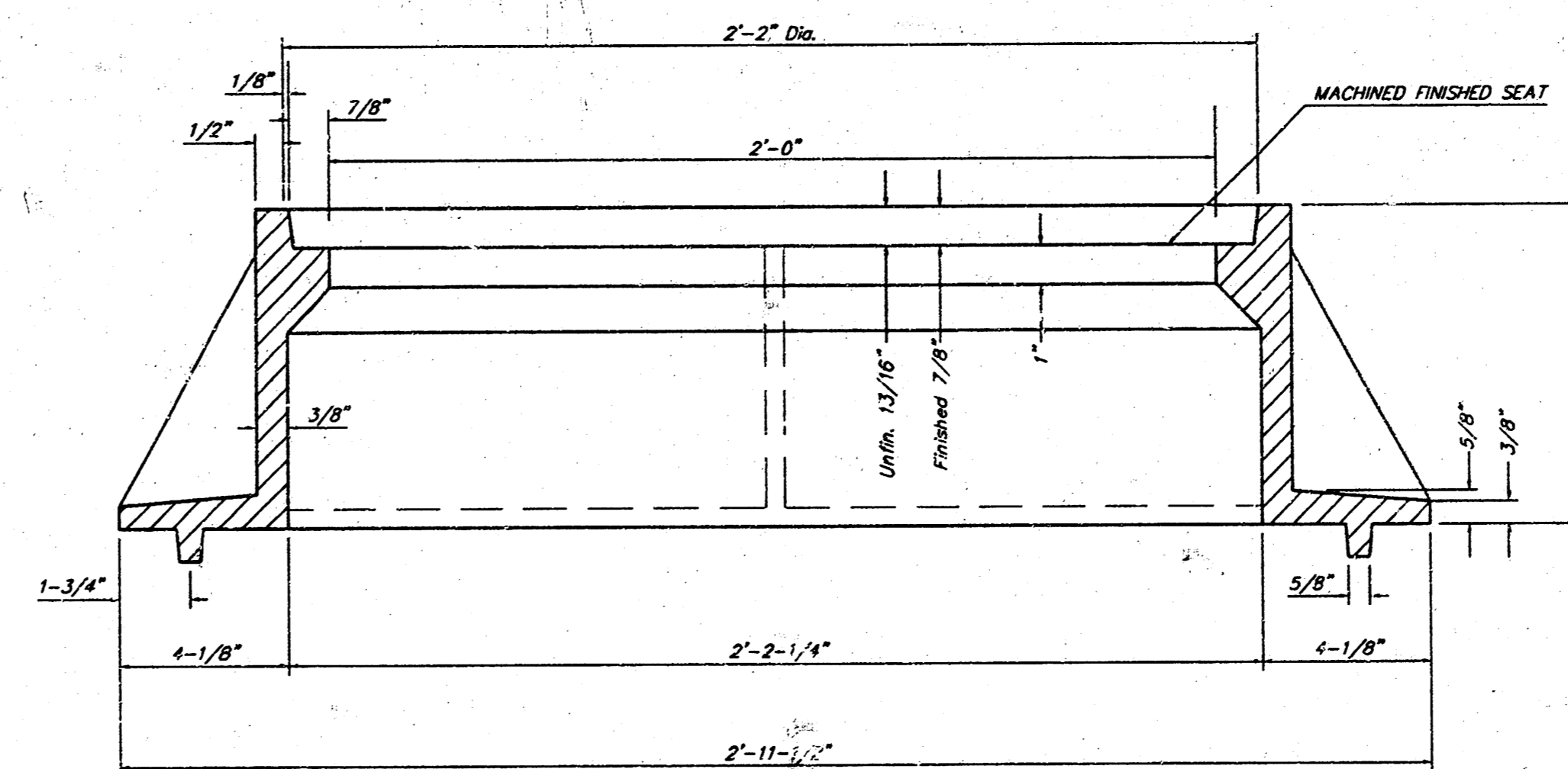


SECTION VIEW

MANHOLE FRAME
Weight = 145 Lbs.



TOP VIEW



SECTION A-A

GENERAL NOTES

MANHOLE CASTINGS SHALL BE MANUFACTURED USING GOOD QUALITY GRAY IRON CONFORMING TO CLASS 30 OF A.S.T.M. DESIGNATION A-48. DIMENSIONS AND WEIGHTS SHOWN ON THE DETAILED DRAWINGS SHALL BE CONSIDERED AS MINIMUM REQUIREMENTS AND ANY DEVIATIONS FROM THE DIMENSIONS SHOWN MUST BE SPECIFICALLY APPROVED. THE FINISHED CASTINGS SHALL BE OF UNIFORM QUALITY, FREE FROM BLOWHOLES, POROSITY, HARD SPOTS, SHRINKAGE DISTORTIONS OR OTHER DEFECTS.

MANHOLE CASTINGS SHALL BE COATED WITH AN ASPHALT PAINT RESULTING IN A SMOOTH, TOUGH AND TENACIOUS COATING WHICH IS NOT BRITTLE OR TACKY.

MANHOLE CASTINGS SHALL BE MANUFACTURED SUCH THAT A COVER MANUFACTURED BY ANY ONE FOUNDRY WILL FIT INTERCHANGEABLY INTO A FRAME MANUFACTURED BY ANOTHER FOUNDRY AND STILL MEET ALLOWABLE CLEARANCES AND NON-ROCKING REQUIREMENTS. THIS WILL REQUIRE MANUFACTURING OF THE MATCHING FACES ON THE COVER AND THE FRAME TO CLOSE TOLERANCES.

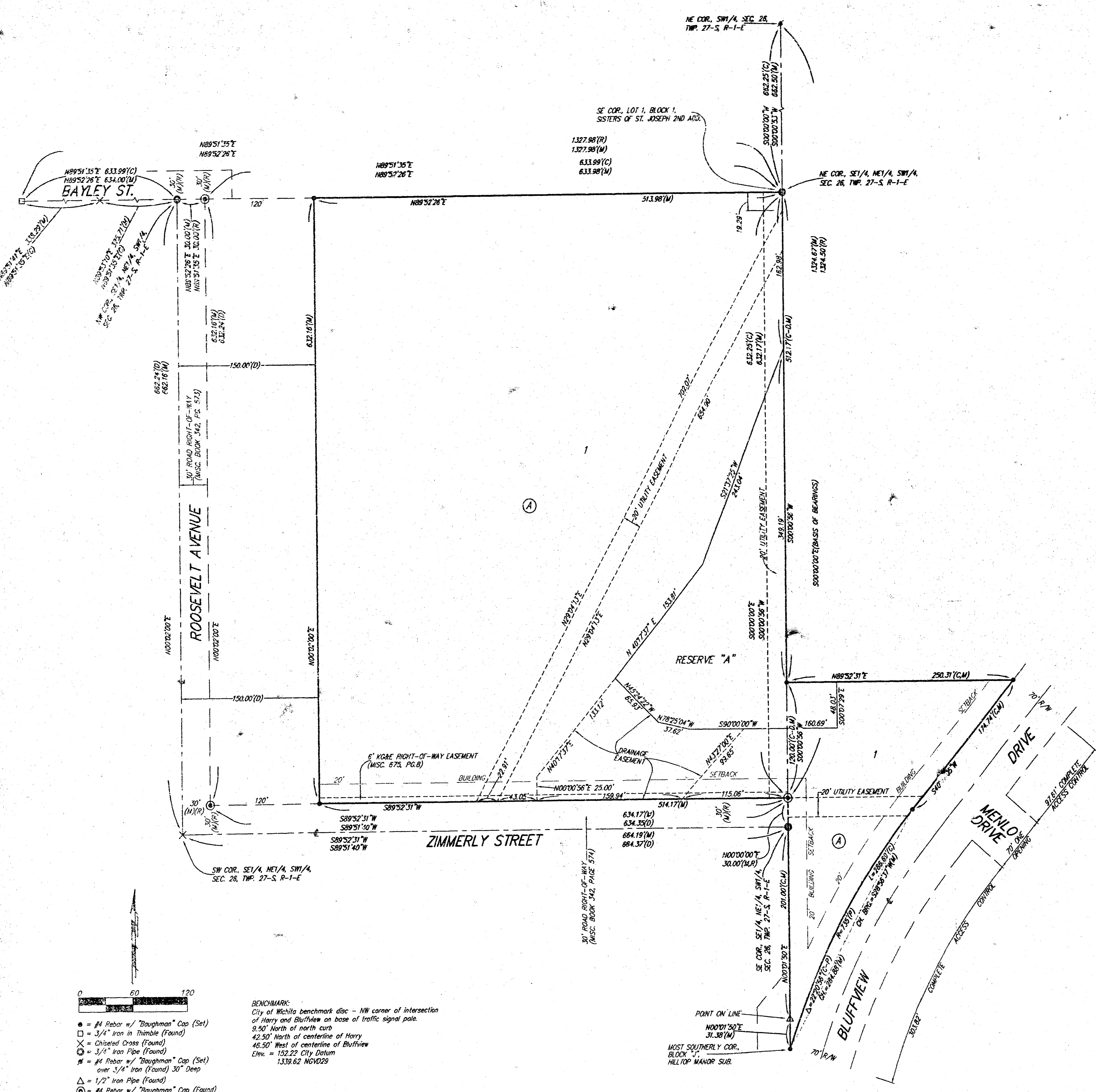
THE OUTSIDE CIRCUMFERENCE OF THE VERTICAL FACE OF THE COVER AND THE INSIDE CIRCUMFERENCE OF THE VERTICAL FACE IN THE FRAME RECESS SHALL BE MANUFACTURED TO TOLERANCES SUCH THAT THE CLEARANCE BETWEEN THE COVER AND FRAME WILL NOT EXCEED 1/8" AT ANY POINT AROUND THE CIRCUMFERENCE OF THE COVER. THE SEATING SURFACES BETWEEN THE COVER AND FRAME SHALL BE MACHINED SUCH AS THESE SURFACES SHALL MAKE FULL CONTACT FOR THEIR FULL CIRCUMFERENCE TO PRECLUDE THE COVER FROM ROCKING IN THE FRAME.

THE MANHOLE FRAME AND COVER SHALL BE MARKED WITH LETTERING INDICATING THE NAME OF THE MANUFACTURER AND THE YEAR WHEN THE COVER OR FRAME WAS CAST. THE COVER SHALL BE FURTHER IDENTIFIED WITH REGARDS TO OWNERSHIP USING LETTERS AT LEAST 1 INCH IN HEIGHT. THIS IDENTIFICATION SHALL BE "CITY OF WICHITA SEWER DEPARTMENT". THE WORD DEPARTMENT MAY BE ABBREVIATED. THE TEXTURE OF THE TOP SURFACE OF THE COVER SHALL BE MANUFACTURED IN A CHECKERED PATTERN DESIGN AS INDICATED ON THE DRAWINGS. SMOOTH BLOCKOUTS SHALL BE UTILIZED TO HIGHLIGHT THE LETTERING ON THE COVER SURFACE. THE TOTAL AREA OF SMOOTH SURFACE BLOCKOUTS SHALL NOT EXCEED THE AREA AS INDICATED ON THE DRAWING. POSITIONING OF SMOOTH BLOCKOUTS AND LETTERING MAY VARY FROM THAT SHOWN ON THE DETAILED DRAWING.

		ADOPTED AS STANDARD DESIGN	
		MANHOLE FRAME AND COVER DETAIL CITY OF WICHITA, KANSAS	
Baughman Company, P.A. 31510th St., Wichita, KS 67211 F 316-262-7771 F 316-262-0140 ENGINEERING SURVEYING PLANNING LANDSCAPE ARCHITECTURE		DESIGN STAFF	DRAWN STAFF
PROJECT NUMBER 1453 PPS (607861)		APPROVED	DATE 05/07/04
REVISIONS:		SCALE NONE	SHEET
		3 OF 4	

SISTERS OF ST. JOSEPH 5TH ADDITION

WICHITA, SEDGWICK COUNTY, KANSAS



BENCHMARK:
City of Wichita benchmark disc - NW corner of intersection of Harry and Bluffview on base of traffic signal pole.
9.50' North of north curb
42.90' North of centerline of Harry
46.50' West of centerline of Bluffview
Elev. = 132.22 City Datum
1338.62 NAVD83

- = #4 Rebar w/ "Baughman" Cap (Set)
- = 3/4" iron in thimble (Found)
- × = Chiseled Cross (Found)
- = 3/4" iron pipe (Found)
- ⊕ = #4 Rebar w/ "Baughman" Cap (Set) over 3/4" iron (Found) 30" Deep
- △ = 1/2" iron pipe (Found)
- ⊙ = #4 Rebar w/ "Baughman" Cap (Found)

- (M) = Measured
- (D) = Described
- (F) = Found
- (C) = Calculated
- (C-D) = Calculated per Described info.
- (C-P) = Calculated per Plotted info.

NOTE:
A drainage plan has been developed for this subdivision and is on file with the City of Wichita, Kansas. Drainage intent shall remain as depicted or as modified with the approval of the City Engineer of the City of Wichita, Kansas. No obstructions which impede the flow of this drainage plan shall be allowed.

MINIMUM BUILDING PAD ELEVATIONS FOR LOWEST OPENING TO THE STRUCTURES		
LOT	BLOCK	ELEVATION CITY DATUM
1	A	142.0

State of Kansas) SS We, Baughman Company, P.A., Surveyors in aforesaid county and state do hereby certify that we have surveyed and plotted "SISTERS OF ST. JOSEPH 5TH ADDITION", Wichita, Sedgwick County, Kansas and that the accompanying plat is a true and correct exhibit of the property surveyed, described as the SE 1/4 of the NE 1/4 of the SW 1/4 of Section 26, Twp. 27-S, R-1-E of the 6th P.M., Sedgwick County, Kansas, except the west 150 feet thereof, and EXCEPT the south 30 feet thereof dedicated for street, TOGETHER with that part of Block J, Hilltop Manor, a Replat of parts of Hilltop Manor and Hilltop Manor 2nd Addition, being a Subdivision in Section 26, Township 27 South, Range 1 East of the 6th Principal Meridian, in Sedgwick County, Kansas, described as follows: Beginning at the SE corner of the SE 1/4 of the NE 1/4 of said SW 1/4, said SE corner also being on the west line of said Block J; thence northerly along the west line of said Block J, 150.00 feet; thence easterly parallel with the south line of the SE 1/4 of the NE 1/4 of said SW 1/4, 250.31 feet, more or less, to a point on the westerly right-of-way line of Bluffview Drive as dedicated in said Hilltop Manor; thence southwesterly along said westerly right-of-way line, 174.74 feet to a P.C. in said westerly right-of-way line; thence southwesterly along said westerly right-of-way line, being a curve to the left, having a radius of 375.00 feet, an arc distance of 286.69 feet to the most southerly corner of said Block J; thence northerly along the west line of said Block J, 232.38 feet to the point of beginning.

Existing public easements and dedications being vacated by virtue of K.S.A. 12-512(b).
All being situated in the SE 1/4 and the SW 1/4 of Sec. 26, Twp. 27-S, R-1-E of the 6th P.M., Sedgwick County, Kansas.
Baughman Company, P.A.

Michael A. Conroy, Surveyor
Michael G. Conroy

Know all men by these presents that we, the undersigned, have caused the land in the surveyors certificate to be platted into a Lot, and a Block, to be known as "SISTERS OF ST. JOSEPH 5TH ADDITION", Wichita, Sedgwick County, Kansas. The utility easements are hereby granted as indicated for the construction and maintenance of all public utilities. The drainage easement is hereby granted as indicated for drainage purposes. Reserve "A" is hereby reserved for landscaping, sidewalks, open space, lakes, drainage purposes and utilities confined to easements. Reserve "A" shall be owned and maintained by the owner of Lot 1, Block A. Access controls shall be as depicted on the face of the plat and are hereby granted to the City of Wichita, Kansas. The permitted opening locations shall be as determined by the City Engineer of the City of Wichita, Kansas. The Minimum Building Pad Elevations for the lowest opening to the structures shall be as indicated on the face of the plat.

The Sisters of Saint Joseph of Wichita, Kansas, a Kansas not-for-profit corporation
Sister Helene Lentz, President
Sister Pamela Young, Secretary

State of Kansas) SS The foregoing instrument acknowledged before me, this 12th day of June, 2003, by Sister Helene Lentz, President of The Sisters of Saint Joseph of Wichita, Kansas, a Kansas not-for-profit corporation, on behalf of the corporation.

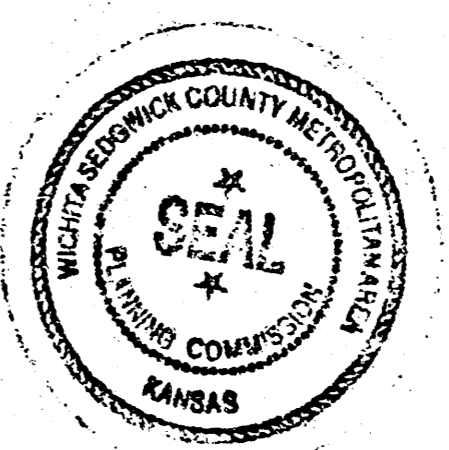
Mary Storrer Reed, Notary Public
My App't. Exp. 6/30/2003

State of Kansas) SS The foregoing instrument acknowledged before me, this 12th day of June, 2003, by Sister Pamela Young, Secretary of The Sisters of Saint Joseph of Wichita, Kansas, a Kansas not-for-profit corporation, on behalf of the corporation.

Mary Storrer Reed, Notary Public
My App't. Exp. 6/30/2003

This plat of "SISTERS OF ST. JOSEPH 5TH ADDITION", Wichita, Sedgwick County, Kansas has been submitted to and approved by the Wichita-Sedgwick County Metropolitan Area Planning Commission, Wichita, Kansas.
Dated this 21st day of August, 2003.
Wichita-Sedgwick County Metropolitan Area Planning Commission

Bernard A. Henderson, Chair
Dale Miller, Secretary



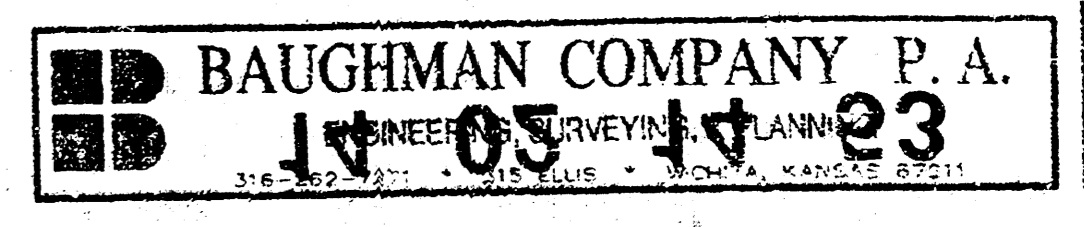
This plat approved and all dedications shown hereon accepted by the City Council of the City of Wichita, Kansas, this 1st day of July, 2003.
At the direction of the City Council

Carlos Mayano, Mayor
Pat Graves, City Clerk

In accordance with K.S.A. 58-2005 on this 12th day of June, 2003.
Linda L. Robello, L.S. #1246
Deputy County Surveyor
Sedgwick County, Kansas

Entered on transfer record this 11th day of July, 2003.
Don Brace, County Clerk

State of Kansas) SS This is to certify that this plat has been filed for record in the office of the Register of Deeds, this 11th day of July, 2003 at 12:20 o'clock P.M. and is duly recorded.
Linda Kizzire, Register of Deeds



SISTERS OF ST. JOSEPH FIFTH ADDITION