

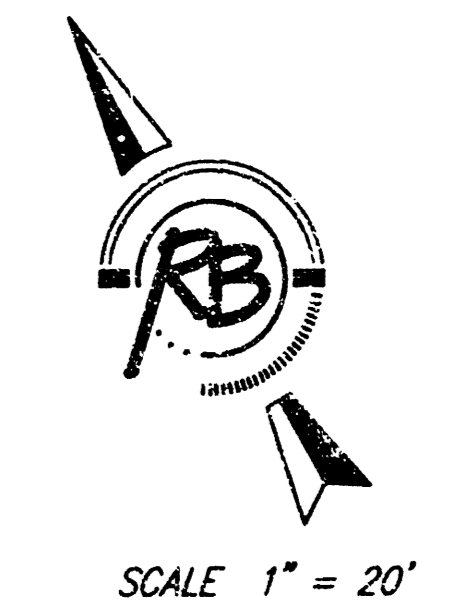
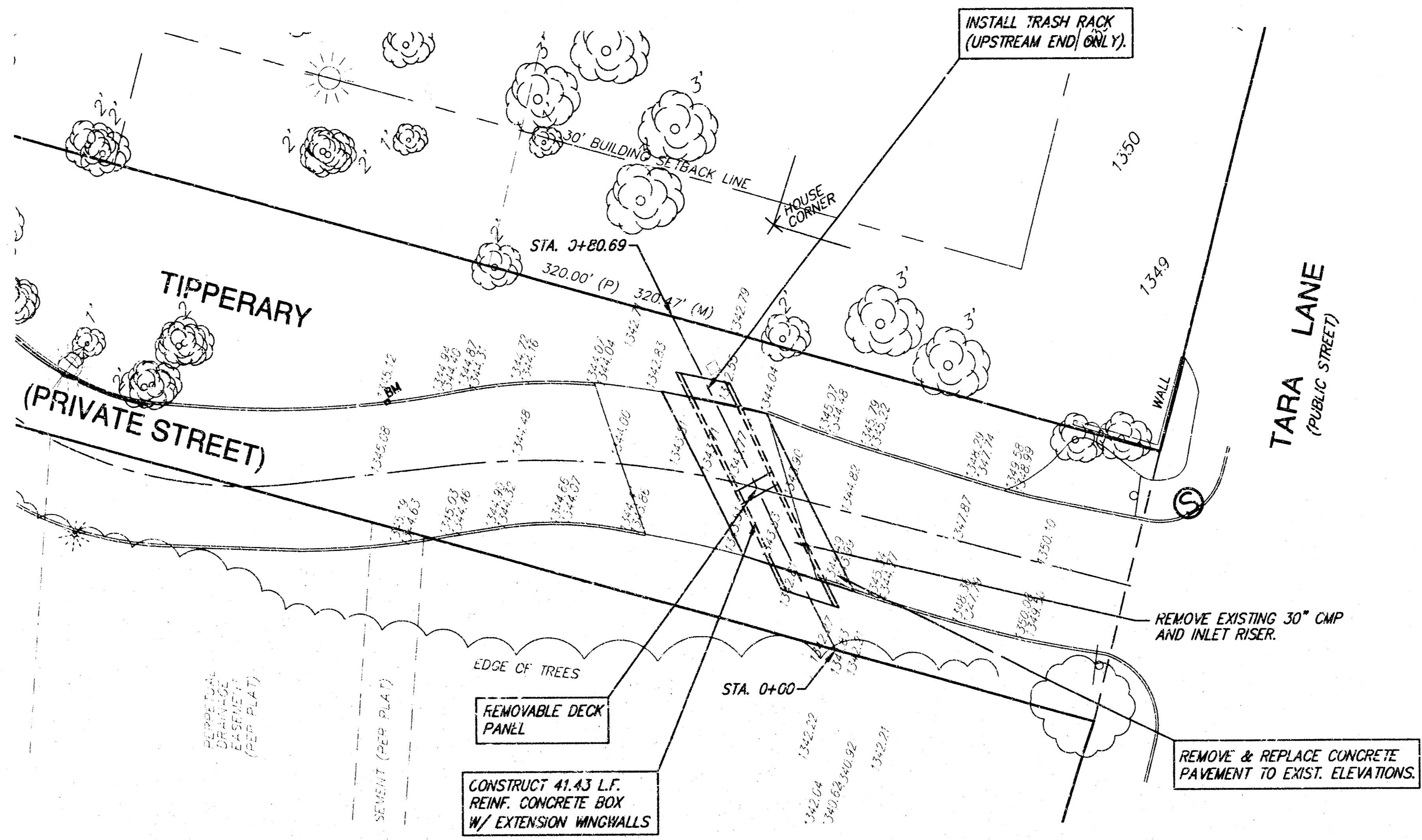
APPROVED AS NOTED
BY CITY ENGINEER OF WICHITA

Sanitary Sewers _____
Storm Sewers VRH 12/2/04
Driveway Approaches _____
Water Mains _____
Paving _____

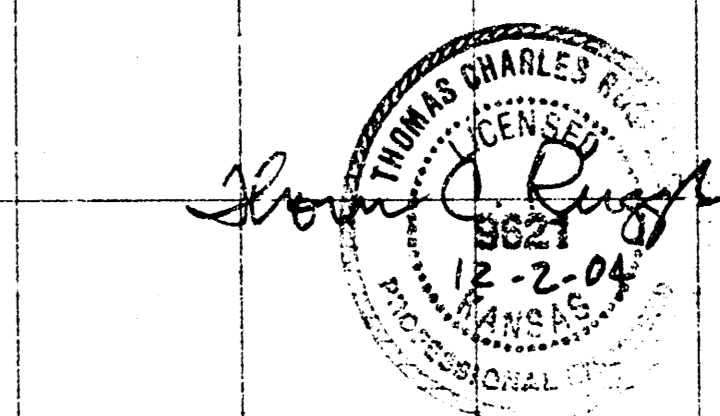
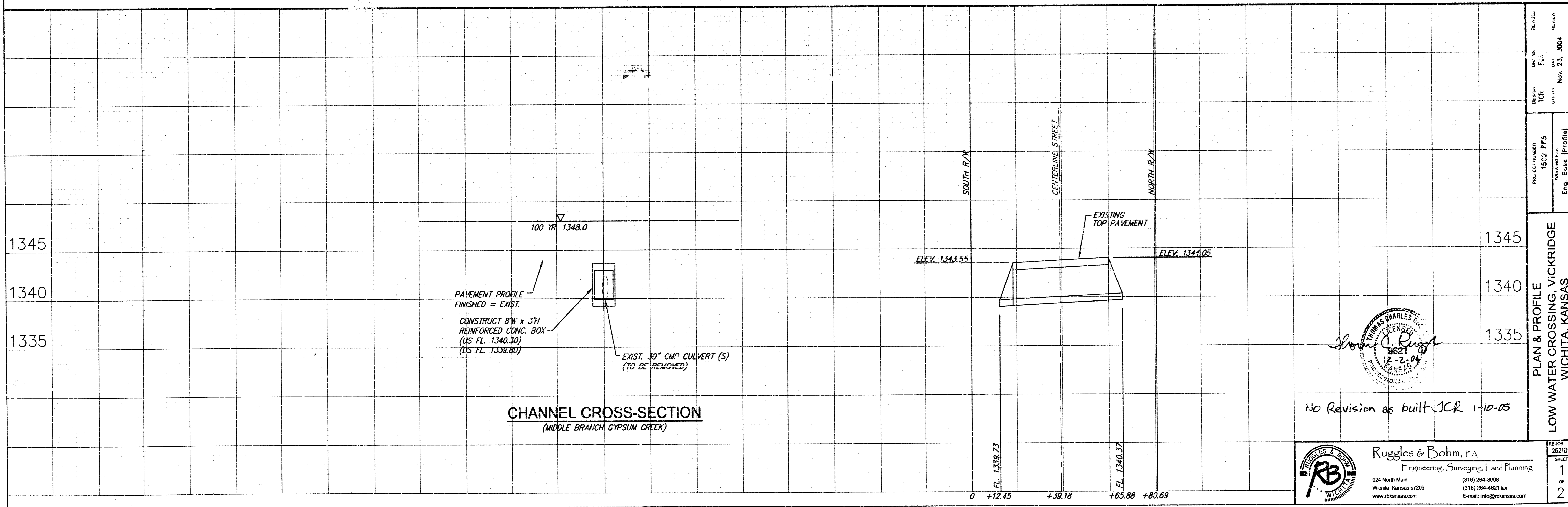
NOTE TO CONTRACTORS

Inspection and testing for this project are to be provided by a Licensed Consulting Engineering Firm under contract with the Owner/Developer. Said inspection to be in accordance with the City of Wichita standard construction engineering practices and certified by a Licensed Professional Engineer. No work shall be performed in dedicated easements or public right-of-way by the Contractor without such inspection, nor shall any work be commenced without written authorization by the City Engineer.

CITY OF WICHITA
PROJECT NO. 1502 PPS (607861)



BENCHMARK:
"□" CUT TOP OF NORTH CURB OF TIPPERARY,
202'± WEST OF TARA LANE CENTERLINE.
ELEV. 1345.12



No Revision as built JCR 1-10-05

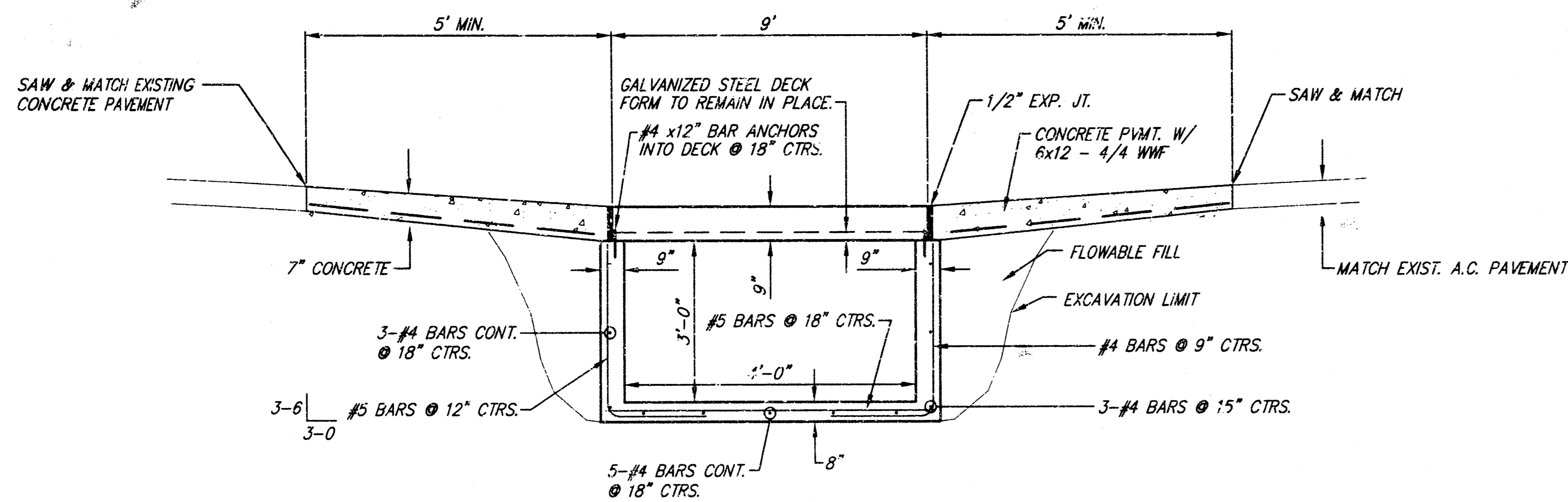
Ruggles & Bohm, P.A.
Engineering, Surveying, Land Planning

924 North Main (316) 264-9008
Wichita, Kansas 67203 (316) 264-4621 fax
www.rbkansas.com E-mail: info@rbkansas.com

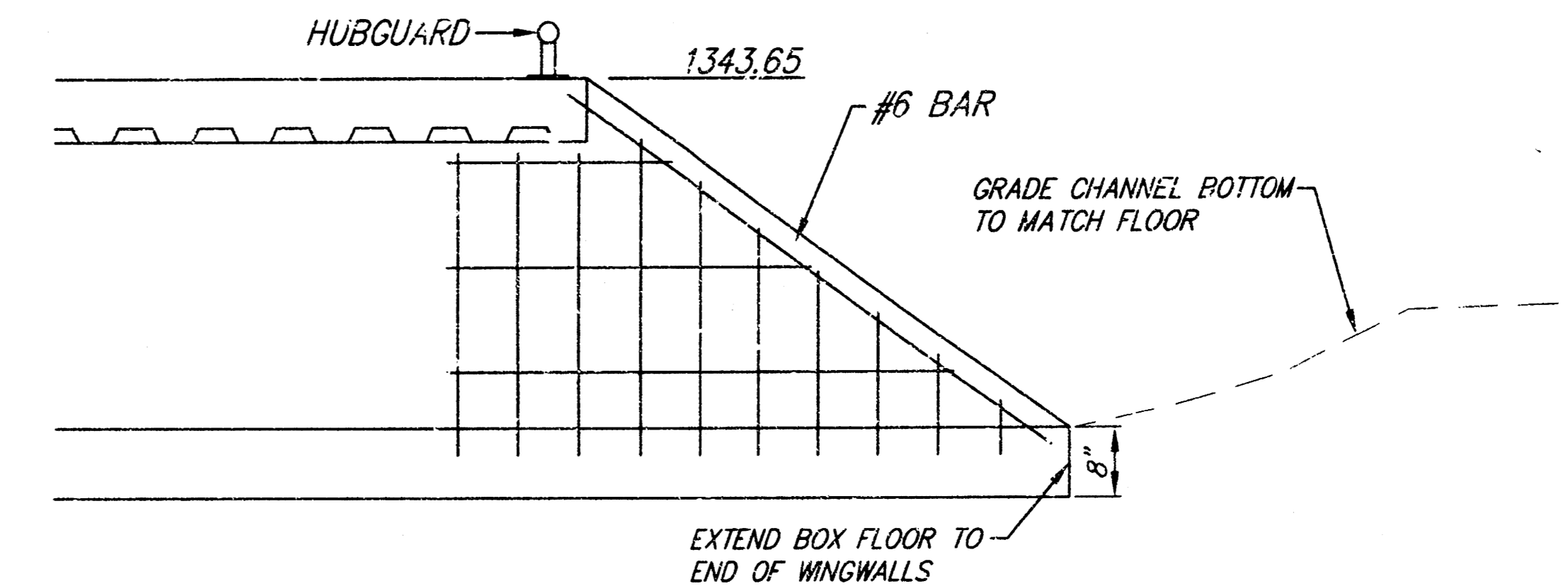
NO. 26
SHEET 1
2

PLAN & PROFILE
LOW WATER CROSSING, VICKRIDGE
WICHITA, KANSAS

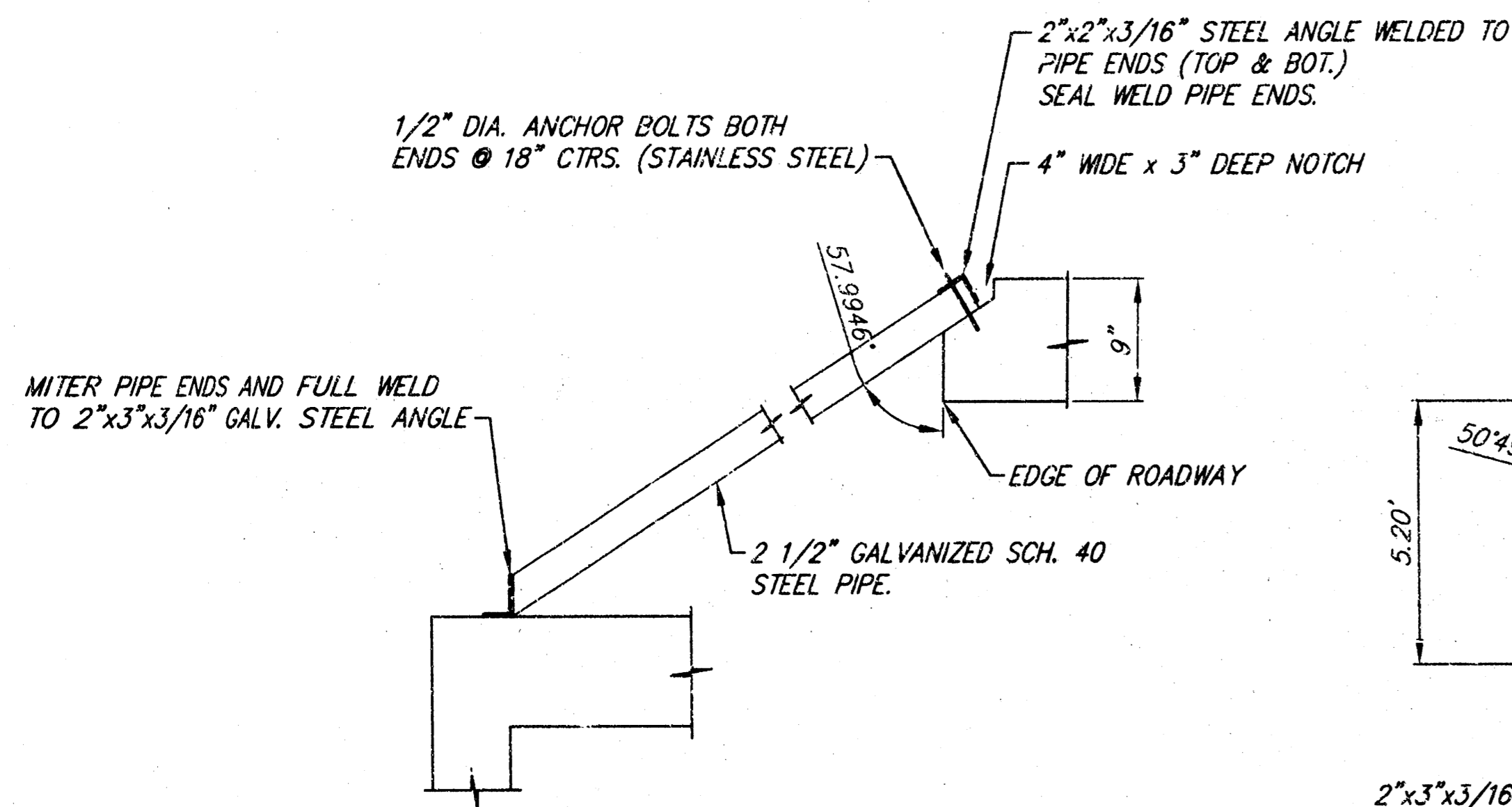
PROJECT NUMBER 1502 PPS
DATE Nov. 21, 2004
DESIGNER TCR
UTILITY Nov. 21, 2004
REVISIONS
DATE
BY



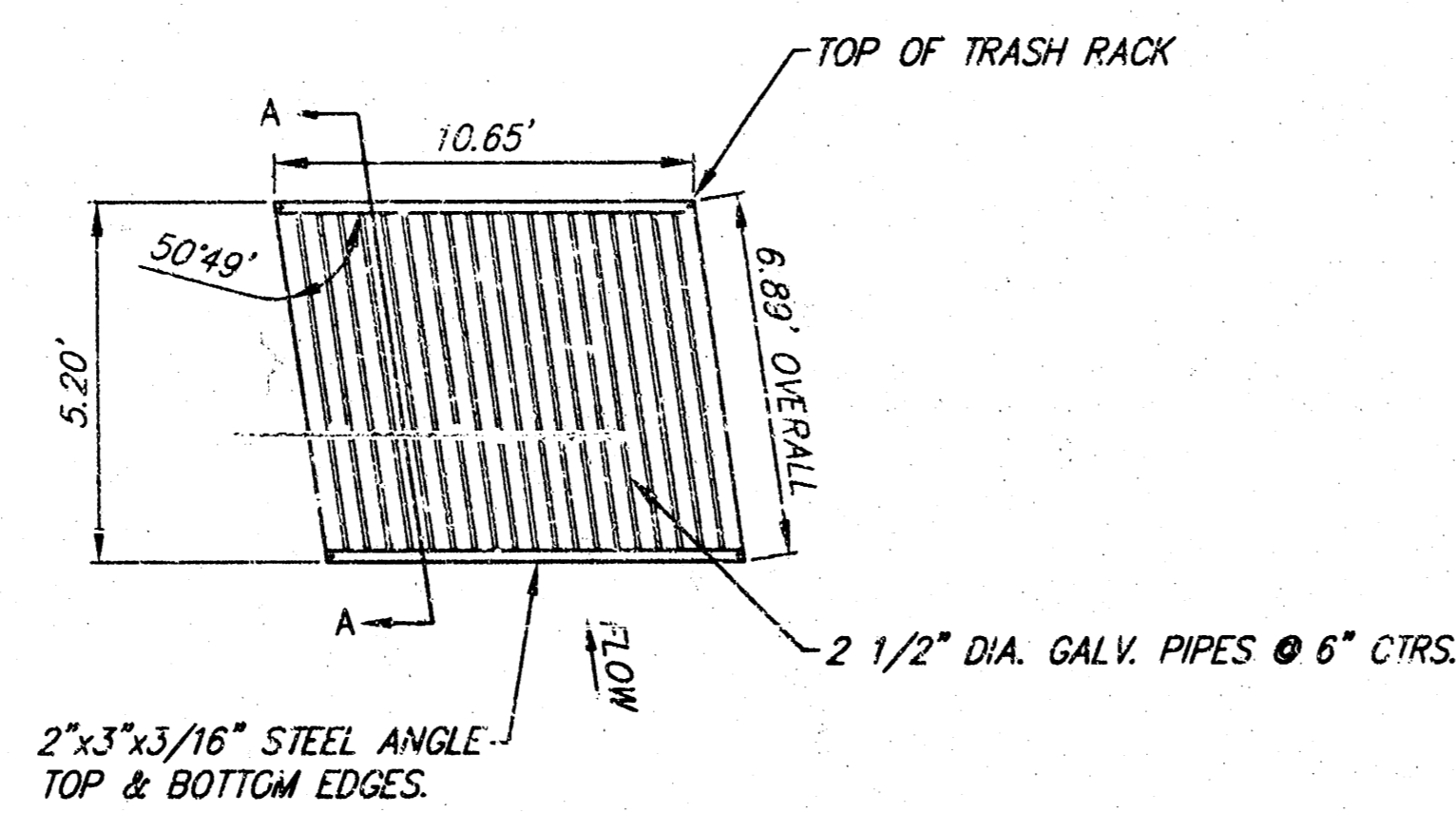
SECTION AT RCB



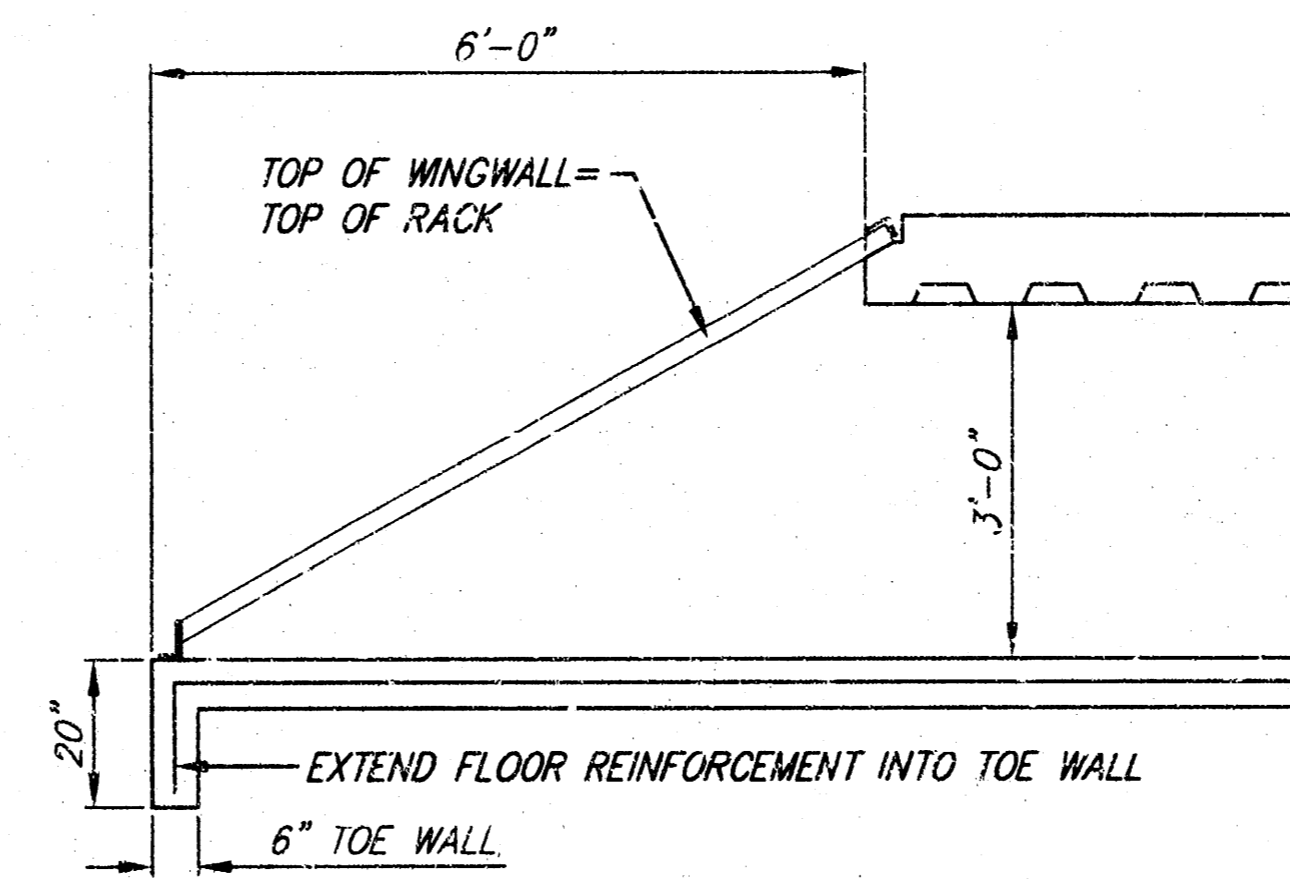
SECTION AT WINGWALL
1"=10' (DOWNSTREAM)



SECTION A-A

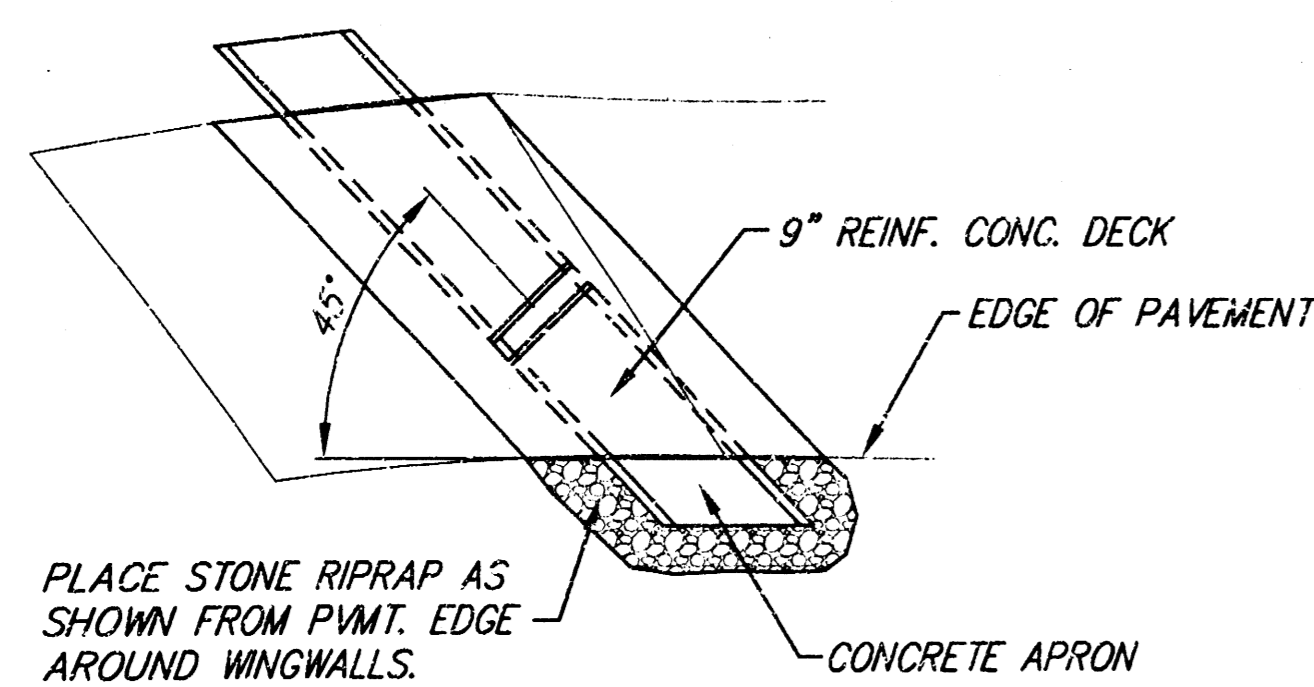


PLAN AT TRASH RACK

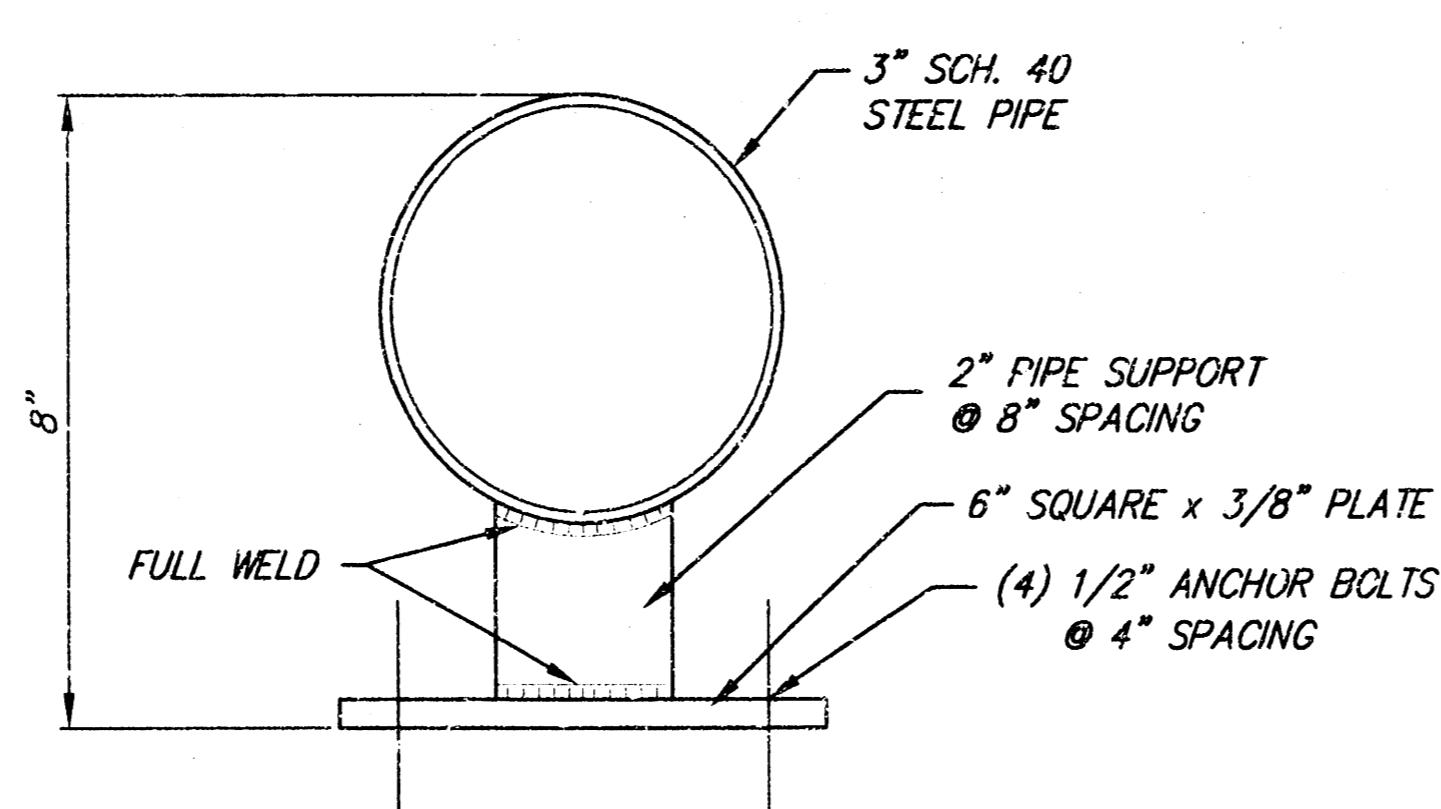


SECTION AT TRASH RACK
1"=10' (UPSTREAM)

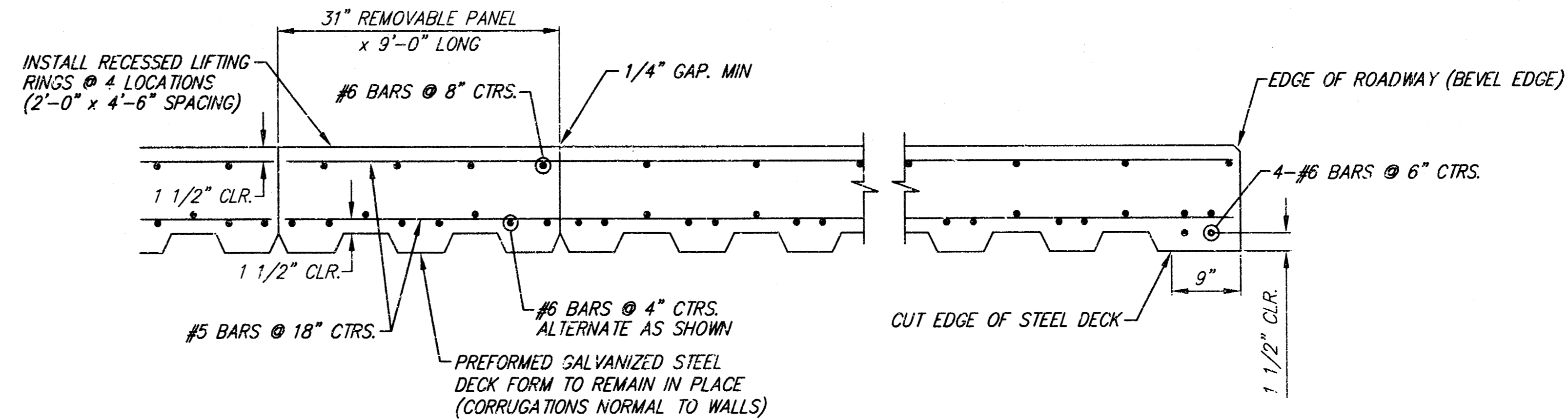
- NOTES:
1. RIPRAP FILTER COURSE PER CITY OF WICHITA STD. SPEC. 304.3(g)
 2. RIPRAP TO BE WEATHERED LIMESTONE TO MATCH COLOR AND SIZE OF EXISTING.
 3. REPLACE STEEL PIPE HUBGUARD BOTH SIDES AS NECESSARY.
 4. ALL REINFORCING STEEL TO BE ASTM 615 GRADE 60, EPOXY COATED.
 5. CONCRETE TO BE 4,000 PSI MIN.



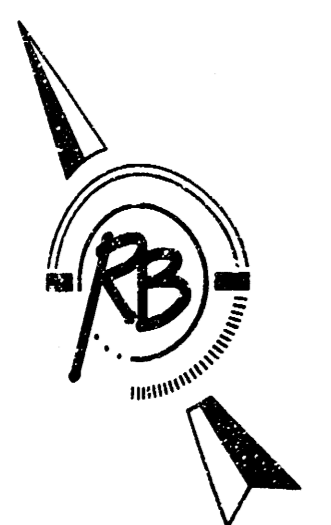
WINGWALL PLAN



STEEL PIPE HUBGUARD

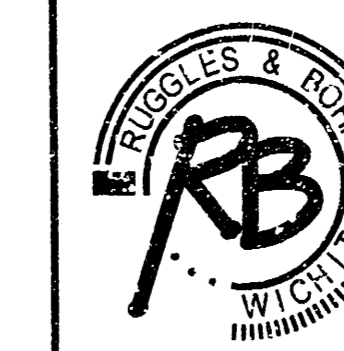


DECK SECTION



SCALE 1" = 20'

VICKRIDGE LOW WATER CROSSING
RCB DETAILS
WICHITA, KANSAS



Ruggles & Bohm, P.A.
Engineering, Surveying, Land Planning
924 North Main
Wichita, Kansas 67203
www.rbkansas.com
(316) 264-8008
(316) 264-4621 fax
E-mail: info@rbkansas.com

DRAWING FILE
Eng. Base {Profile}

PROJECT NUMBER
1502 PPS

DATE
Nov. 23, 2004

DESIGN	TCR	SHEET 2 OF 2
DRAWN	RA	
REVIEW		
UTILITY		

10 04 05 50