

GENERAL NOTES

- UNLESS SHOWN OR OTHERWISE STATED ON THESE DRAWINGS, MATERIALS AND CONSTRUCTION SHALL BE IN ACCORDANCE WITH THE CITY OF WICHITA STANDARD SPECIFICATIONS.
- CONNECTING TO EXISTING STRUCTURES:
PRIOR TO LAYING SEWER LINES USING EXISTING STUBS IN EXISTING STRUCTURES, THE CONTRACTOR SHALL EXPOSE AND VERIFY THE ELEVATION, GRADE AND ALIGNMENT OF EXISTING STUBS AND NOTIFY THE ENGINEER OF ANY DEVIATION FROM THE PLAN. WHERE CONNECTION TO AN EXISTING STRUCTURE THAT DOES NOT HAVE AN EXISTING STUB OR THE STUB IS UNSUITABLE DUE TO ELEVATION GRADE OR ALIGNMENT, THE CONTRACTOR SHALL BORE CUT INTO EXISTING STRUCTURE WALL TO MAKE CONNECTION USING APPROVED WATER STOP GASKET AND RESHAP THE EXISTING INVERT TO PROVIDE SMOOTH FLOW. THE COST OF CONNECTING TO EXISTING STRUCTURES IS INCIDENTAL TO THE PROJECT.
- ALL STUBS AND PLUGGED PIPES SHALL BE LOCATED WITH GREEN PLASTIC TAPE IN THE SAME MANNER AS RISERS.
- COST OF EXCAVATION, HAULING AND DUMPING OF EXCESS EXCAVATION SHALL BE SUBSIDIARY TO THE PROJECT.
- ALL CONCRETE SHALL BE STANDARD PAVING MIX UNLESS OTHERWISE NOTED.
- THE CONTRACTOR SHALL BE RESPONSIBLE FOR PRESERVING PROPERTY BOUNDS. THE CONTRACTOR SHALL BE REQUIRED TO RE-ESTABLISH ANY PROPERTY BOUNDS WHICH ARE DAMAGED OR DESTROYED BY HIS CONSTRUCTION OPERATIONS. SUCH BOUNDS SHALL BE RE-ESTABLISHED BY A LICENSED LAND SURVEYOR IN ACCORDANCE WITH STATE LAWS.
- TREES TO BE REMOVED ARE MARKED \otimes . ALL TREES WHICH IN THE OPINION OF THE FIELD ENGINEER CAN BE SAVED, SHALL BE SAVED.
- CONTRACTOR SHALL NOTIFY UTILITY COMPANIES OF CONSTRUCTION SCHEDULING.
- EXISTING UTILITIES AND THEIR LOCATIONS, AS SHOWN ON THE PLANS REPRESENT THE BEST INFORMATION OBTAINABLE FOR DESIGN. LOCATION INFORMATION HAS BEEN OBTAINED FROM THE VARIOUS COMPANIES AND IS EITHER FROM COMPANY UTILITY DRAWINGS OR COMPANY PROVIDED FIELD LOCATIONS. THE PLAN LOCATIONS SHOWN ARE NOT GUARANTEED. ADDITIONAL EXISTING UTILITIES MAY ALSO BE ENCOUNTERED.
- CONTRACTOR WILL BE REQUIRED TO PROVIDE A MINIMUM ADVANCE NOTICE OF SEVENTY-TWO (72) HOURS TO UTILITY COMPANIES TO STARTING ANY EXCAVATION AS FOLLOWS:

KANSAS ONE-CALL 800-344-7233
OR 687-2470 (LOCAL WICHITA)

THE CONTRACTOR MUST NOTIFY THE FOLLOWING IN CASE OF EMERGENCY:

COX COMMUNICATIONS (CABLE)	262-0661
WESTAR (ELECTRIC)	261-6512
KANSAS GAS SERVICE (GAS)	832-3161
SBC (TELEPHONE)	600-870-8390
CITY OF WICHITA WATER & SEWER	262-6000
AQUILA (GAS)	949-0056

- RUBBLE FROM THE REMOVAL OF MISCELLANEOUS STRUCTURES AND EXCESS EXCAVATION WHICH IS TO BE WASTED SHALL BE DISPOSED OF ON SITES TO BE PROVIDED BY THE CONTRACTOR. THESE SITES SHALL BE APPROVED BY THE ENGINEER AS TO SUITABILITY, APPEARANCE AND SITE LOCATION. LOCATIONS THAT, IN THE OPINION OF THE ENGINEER, WILL LEAVE AN UNSIGHTLY APPEARANCE WILL NOT BE APPROVED. ALL DISPOSAL SITES MUST BE APPROVED BY THE KANSAS DEPARTMENT OF HEALTH AND ENVIRONMENT. MATERIAL EITHER STOCKPILED OR DISPOSED OF IN A FLOOD PLAIN WOULD REQUIRE A KANSAS STATE BOARD OF AGRICULTURE PERMIT. ANY MATERIAL DUMPED IN WATERS OF THE UNITED STATES OR WETLANDS IS SUBJECT TO U.S. CORPS OF ENGINEERS PERMITTING REGULATIONS. ANY MATERIAL BURIED OR STOCKPILED BEYOND APPROVED CONSTRUCTION LIMITS WOULD REQUIRE ADDITIONAL ARCHAEOLOGICAL INVESTIGATIONS UNLESS BURIED IN A PREVIOUSLY APPROVED BORROW LOCATION.
- TREES AND SHRUBS IN PUBLIC RIGHT-OF-WAY WHICH ARE IN DIRECT CONFLICT WITH PROPOSED NEW CONSTRUCTION SHALL BE REMOVED BY THE CONTRACTOR WITH THE ENGINEER'S APPROVAL. TREES AND SHRUBS WHICH ARE NOT IN DIRECT CONFLICT WITH PROPOSED NEW CONSTRUCTION SHALL BE SAVED AND PROTECTED FROM DAMAGE.
- ALL DISTURBED AREAS TO BE SEED WITH RYE GRASS AT A RATE OF 200 LBS. PER ACRE WITHIN 10 DAYS OF CONSTRUCTION. CONTRACTOR TO PREPARE GROUND PER CITY SPECIFICATIONS. COST IS SUBSIDIARY TO SITE PREPARATION AND RESTORATION.

APPROVED AS NOTED
BY CITY ENGINEER OF WICHITA

STORM SEWERS _____

NOTE TO CONTRACTOR

INSPECTION AND TESTING FOR THIS PROJECT IS TO BE PROVIDED BY A LICENSED CONSULTING ENGINEERING FIRM UNDER CONTRACT WITH THE OWNER/DEVELOPER. SAID INSPECTION TO BE IN ACCORDANCE WITH THE CITY OF WICHITA STANDARD CONSTRUCTION ENGINEERING PRACTICES AND CERTIFIED BY A LICENSED PROFESSIONAL ENGINEER. NO WORK SHALL BE PERFORMED IN DEDICATED EASEMENTS OR THE PUBLIC RIGHT-OF-WAY BY THE CONTRACTOR WITHOUT SUCH INSPECTION NOR SHALL ANY WORK BE COMMENCED IN DEDICATED EASEMENTS OR PUBLIC RIGHT-OF-WAY WITHOUT WRITTEN AUTHORIZATION BY THE CITY ENGINEER.

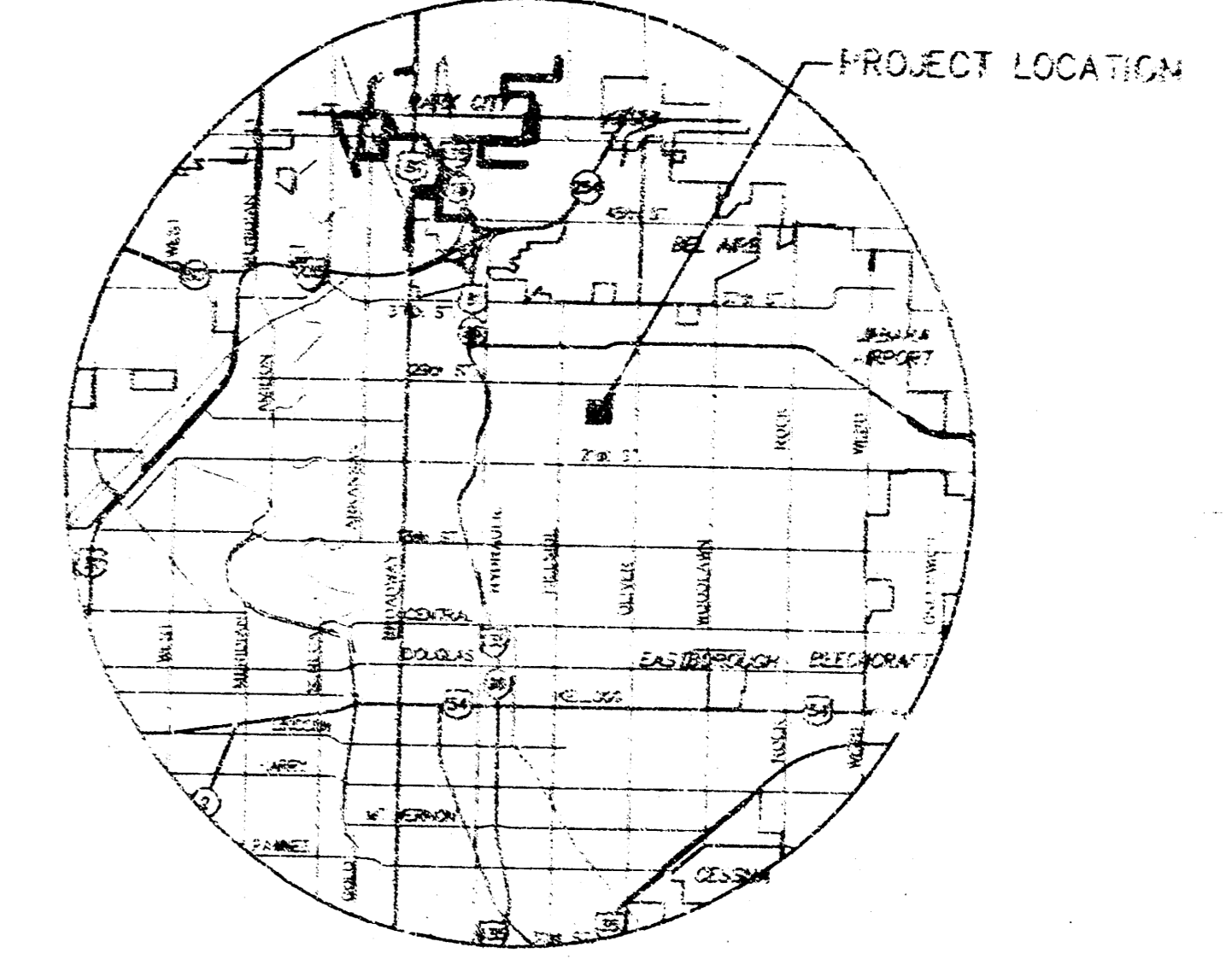
PRIVATE
STORM SEWER PLANS FOR
USD #259 BUCKNER ELEMENTARY SCHOOL

AN ADDITION TO THE CITY OF WICHITA
SEDGWICK COUNTY, KANSAS

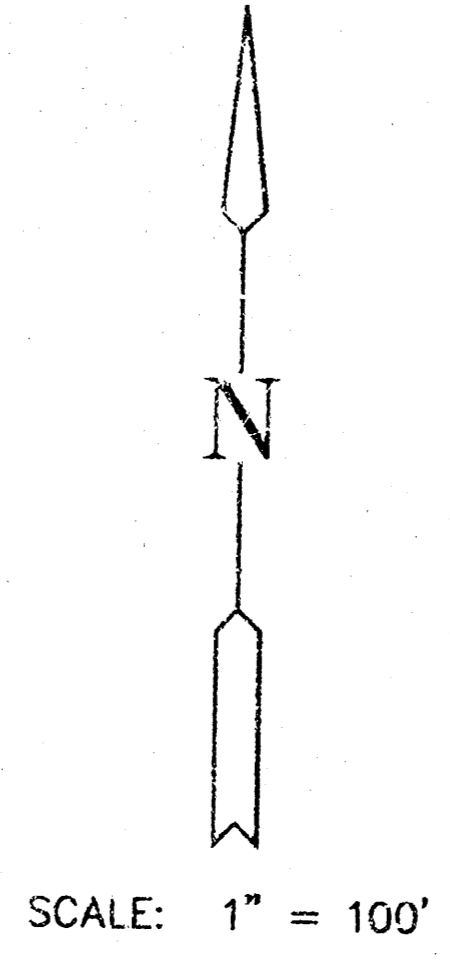
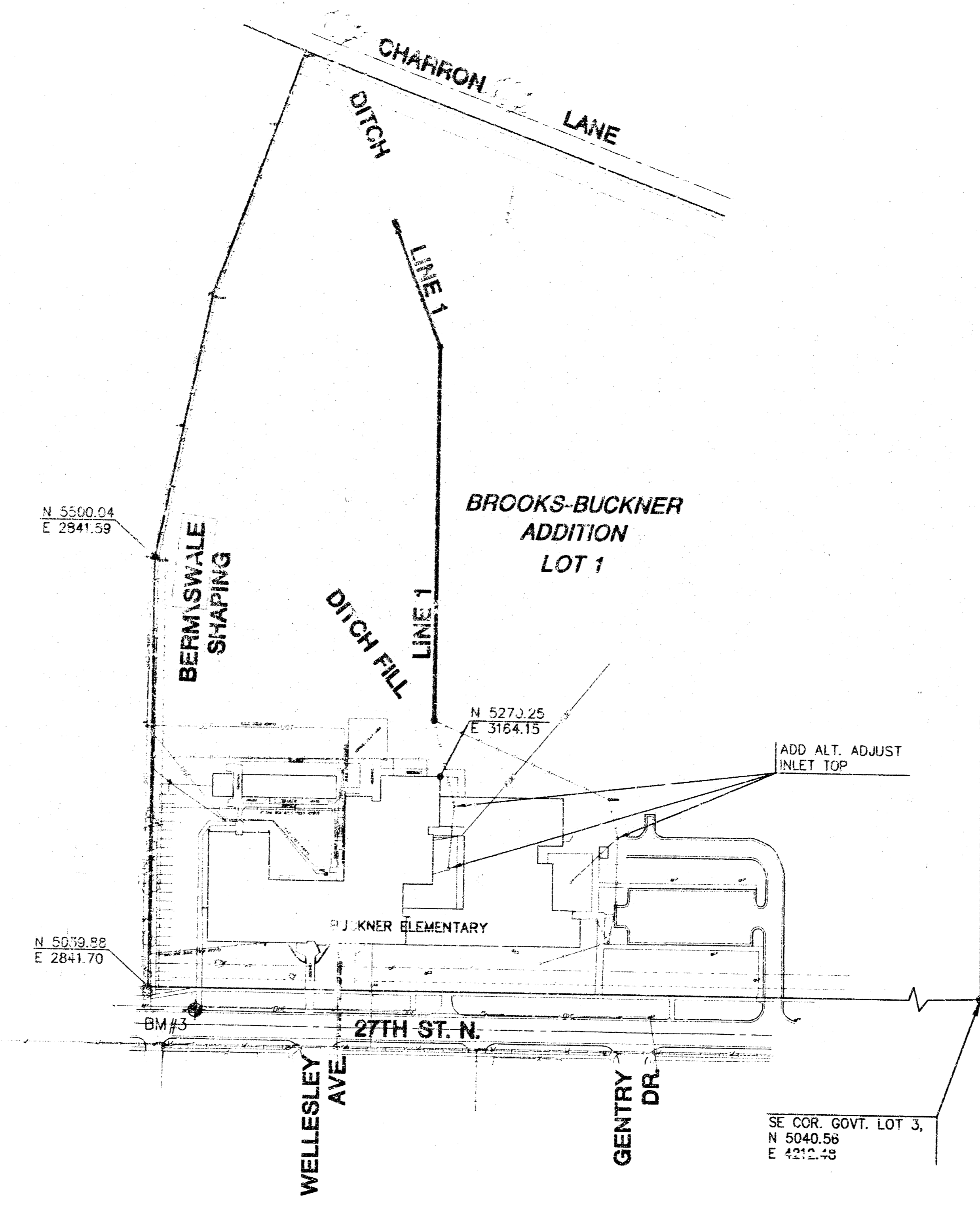
PROJECT NO. 1548 PPS

JM ARMOUR, P.E. - CITY ENGINEER

OCA 607861



VICINITY MAP



INDEX TO DRAWINGS

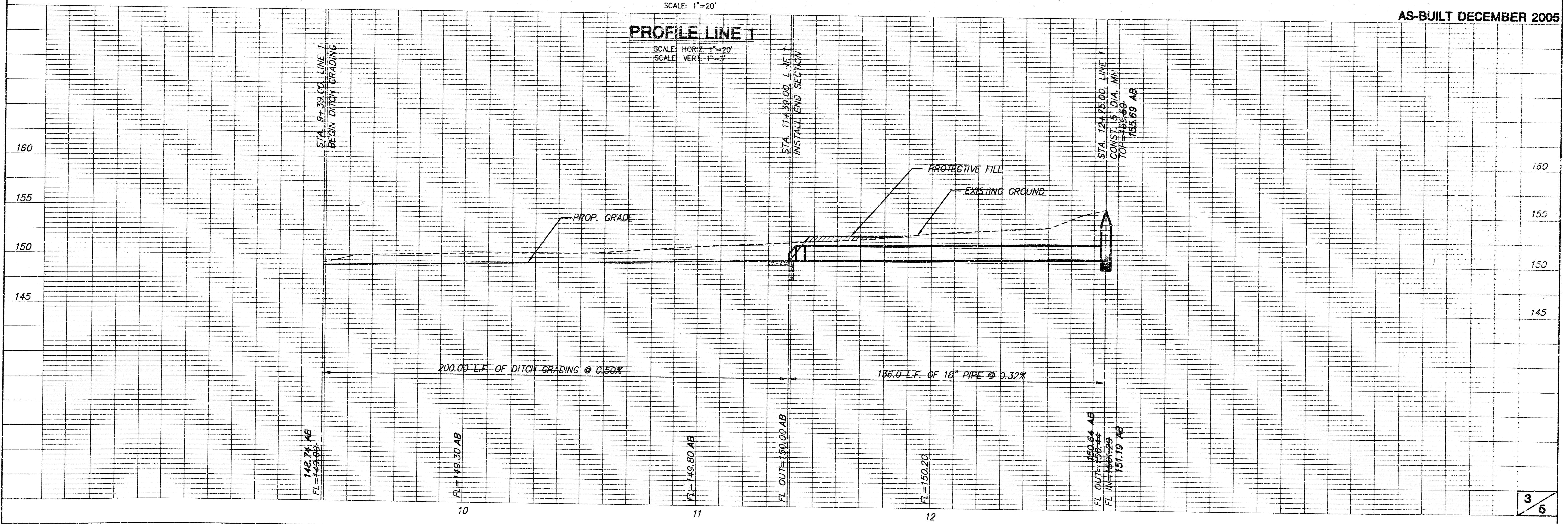
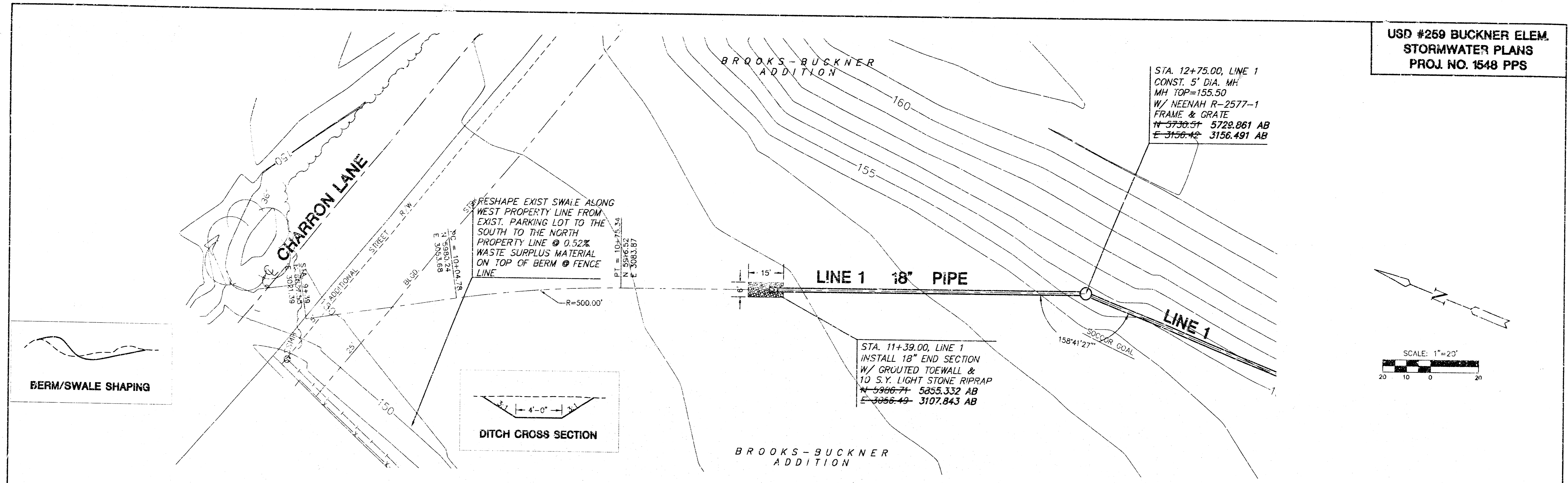
SHEET NO.	DESCRIPTION
1	TITLE SHEET
2	MANHOLE DETAILS
3-4	SWS LINE 1
5	PLAT

BENCHMARKS

BM #3 - top of curb on N. side of 27th Street North 57.5' East of power pole at Southwest corner of Buckner Elementary School property.
(N 5015.42, E 2894.14)
Elevation=157.79 (city datum)
1029.61 (USGS)

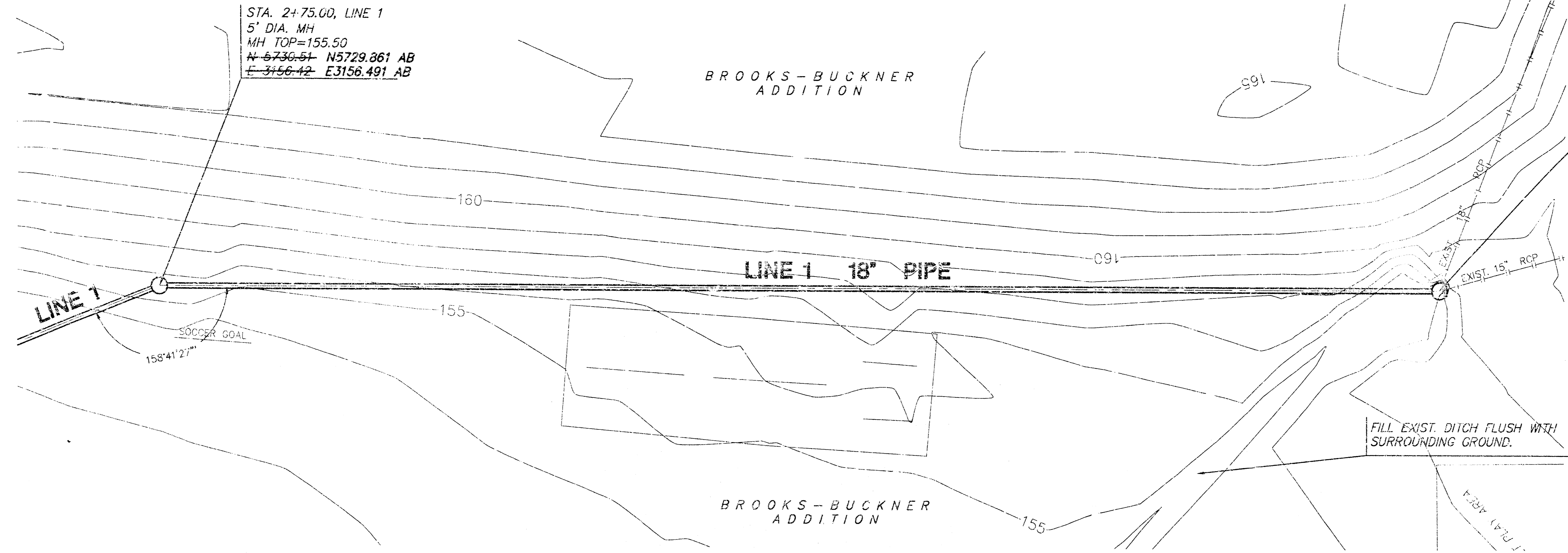
AS-BUILT DECEMBER 2005

 MKEC ENGINEERING CONSULTANTS 411 N. WEBB ROAD WICHITA, KS. 67206 316-684-9600	USD #259 BUCKNER ELEMENTARY SCHOOL		
	PROJECT NAME		
	PRIVATE STORM SEWER PLANS		
	SHEET TITLE		
JTC	KWS	JTC	
DESIGN BY:	DRAWN BY:	CHECKED BY:	
MAY 2005	03443	1 / 5	
DATE	JOB NO.	SHEET/OF	



AS-BUILT DECEMBER 2005

**USD #259 BUCKNER ELEM.
STORMWATER PLANS
PROJ. NO. 1548 PPS**

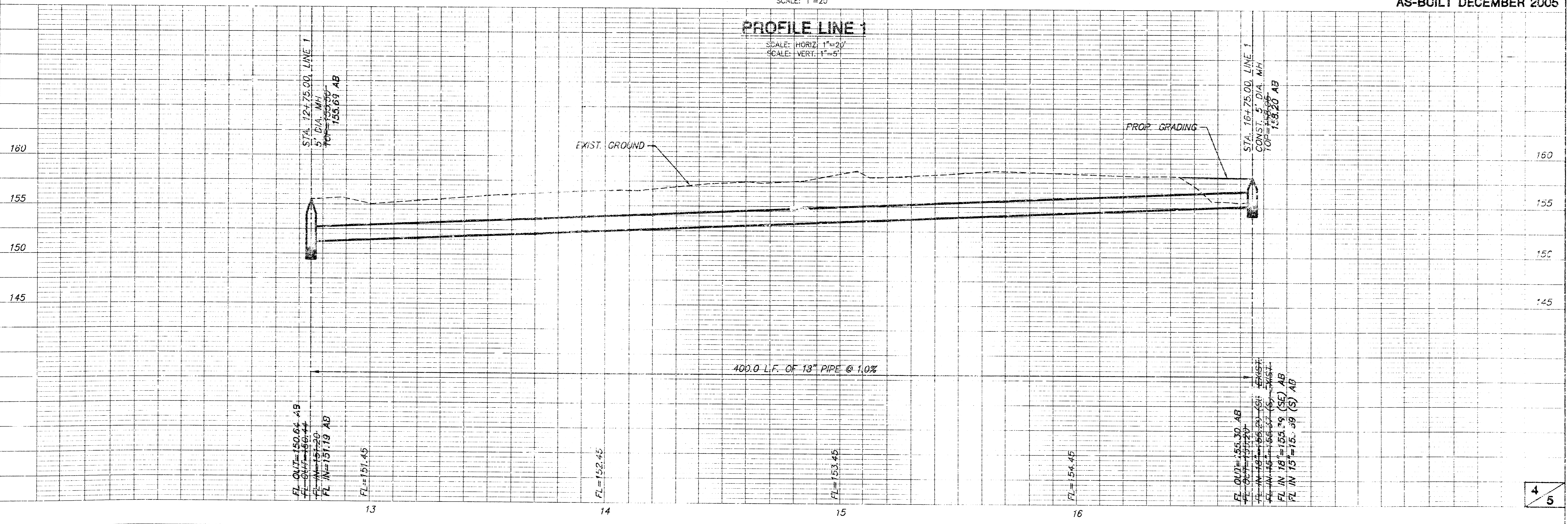


STA. 16+75.00, LINE 1
REMOVE EXIST. CONC. HEADWALL
CONST. 5' DIA. MH
MH TOP=158.05
W/NEENAH R-2577-1 FRAME & GATE
N=5330.51 E3156.539 AB
E=3156.42 E3156.756 AB

STA. 2+75.00, LINE 1
5' DIA. MH
MH TOP=155.50
N=6736.51 E3156.491 AB
E=3156.42 E3156.491 AB

PLAN LINE 1
SCALE: 1"=20'

AS-BUILT DECEMBER 2005




PROFILE LINE 1
SCALE: HORIZ. 1"=20'
SCALE: VERT. 1"=5'

FL OUT=150.64 AB
FL IN=150.64 AB
FL IN=151.70
FL IN=151.70 AB

FL OUT=150.30 AB
FL IN=150.30 AB
FL IN=151.70
FL IN=151.70 AB
FL IN 18"=150.39 (SE) AB
FL IN 15"=15.39 (S) AD

GENERAL NOTES

- UNLESS SHOWN OR OTHERWISE STATED ON THESE DRAWINGS, MATERIALS AND CONSTRUCTION SHALL BE IN ACCORDANCE WITH THE CITY OF WICHITA STANDARD SPECIFICATIONS.
- CONNECTING TO EXISTING STRUCTURES:
PRIOR TO LAYING SEWER LINES USING EXISTING STUBS IN EXISTING STRUCTURES, THE CONTRACTOR SHALL EXPOSE AND VERIFY THE ELEVATION, GRADE AND ALIGNMENT OF EXISTING STUBS AND NOTIFY THE ENGINEER OF ANY DEVIATION FROM THE PLAN. WHERE CONNECTION TO AN EXISTING STRUCTURE THAT DOES NOT HAVE AN EXISTING STUB OR THE STUB IS UNUSABLE DUE TO ELEVATION GRADE OR ALIGNMENT, THE CONTRACTOR SHALL BORE OUT INTO EXISTING STRUCTURE WALL TO MAKE CONNECTION USING APPROVED WATER STOP GASKET, AND RESHAPE THE EXISTING INVERT TO PROVIDE SMOOTH FLOW. THE COST OF CONNECTING TO EXISTING STRUCTURES IS INCIDENTAL TO THE PROJECT.
- ALL STUBS AND PLUGGED PIPES SHALL BE LOCATED WITH GREEN PLASTIC TAPE IN THE SAME MANNER AS RISERS.
- COST OF EXCAVATION, HAULING AND DUMPING OF EXCESS EXCAVATION SHALL BE SUBSIDIARY TO THE PROJECT.
- ALL CONCRETE SHALL BE STANDARD PAVING MIX UNLESS OTHERWISE NOTED.
- THE CONTRACTOR SHALL BE RESPONSIBLE FOR PRESENTING PROPERTY IRONS. THE CONTRACTOR SHALL BE REQUIRED TO RE-ESTABLISH ANY PROPERTY IRONS WHICH ARE DAMAGED OR DESTROYED BY THE CONSTRUCTION OPERATIONS. SUCH IRONS SHALL BE RE-ESTABLISHED BY A LICENSED LAND SURVEYOR IN ACCORDANCE WITH STATE LAWS.
- TREES TO BE REMOVED ARE MARKED . ALL TREES WHICH IN THE OPINION OF THE FIELD ENGINEER CAN BE SAVED, SHALL BE SAVED.
- CONTRACTOR SHALL NOTIFY UTILITY COMPANIES OF CONSTRUCTION SCHEDULING.
- EXISTING UTILITIES AND THEIR LOCATIONS, AS SHOWN ON THE PLANS REPRESENT THE BEST INFORMATION OBTAINABLE FOR DESIGN. LOCATION INFORMATION HAS BEEN OBTAINED FROM THE VARIOUS COMPANIES AND IS EITHER FROM COMPANY UTILITY DRAWINGS OR COMPANY PROVIDED FIELD LOCATIONS. THE PLAN LOCATIONS SHOWN ARE NOT GUARANTEED. ADDITIONAL EXISTING UTILITIES MAY ALSO BE ENCOUNTERED.
- CONTRACTOR WILL BE REQUIRED TO PROVIDE A MINIMUM ADVANCE NOTICE OF SEVENTY-TWO (72) HOURS TO UTILITY COMPANIES TO STARTING ANY EXCAVATION AS FOLLOWS:

KANSAS ONE-CALL 500-344-7233
OR 687-2470 (LOCAL WICHITA)

THE CONTRACTOR MUST NOTIFY THE FOLLOWING IN CASE OF EMERGENCY:

COX COMMUNICATIONS (CABLE)	262-0961
WESTAR (ELECTRIC)	261-6512
KANSAS GAS SERVICE (GAS)	832-3101
SBC (TELEPHONE)	800-870-8390
CITY OF WICHITA WATER & SEWER	262-6000
AQUILA (GAS)	948-0096

- RUBBLE FROM THE REMOVAL OF MISCELLANEOUS STRUCTURES AND EXCESS EXCAVATION WHICH IS TO BE WASTED SHALL BE DISPOSED OF ON SITES TO BE PROVIDED BY THE CONTRACTOR. THESE SITES SHALL BE APPROVED BY THE ENGINEER AS TO SUITABILITY, APPEARANCE AND SITE LOCATION. LOCATIONS THAT, IN THE OPINION OF THE ENGINEER, WILL LEAVE AN UNSIGHTLY APPEARANCE WILL NOT BE APPROVED. ALL DISPOSAL SITES MUST BE APPROVED BY THE KANSAS DEPARTMENT OF HEALTH AND ENVIRONMENT. MATERIAL EITHER STOCKPILED OR DISPOSED OF IN A FLOOD PLAIN WOULD REQUIRE A KANSAS STATE BOARD OF AGRICULTURE PERMIT. ANY MATERIAL DUMPED IN WATERS OF THE UNITED STATES OR WETLANDS IS SUBJECT TO U.S. CORPS OF ENGINEERS PERMITTING REGULATIONS. ANY MATERIAL BURIED OR STOCKPILED BEYOND APPROVED CONSTRUCTION LIMITS WOULD REQUIRE ADDITIONAL ARCHAEOLOGICAL INVESTIGATIONS UNLESS BURIED IN A PREVIOUSLY APPROVED BORROW LOCATION.
- TREES AND SHRUBS IN PUBLIC RIGHT-OF-WAY WHICH ARE IN DIRECT CONFLICT WITH PROPOSED NEW CONSTRUCTION SHALL BE REMOVED BY THE CONTRACTOR WITH THE ENGINEER'S APPROVAL. TREES AND SHRUBS WHICH ARE NOT IN DIRECT CONFLICT WITH PROPOSED NEW CONSTRUCTION SHALL BE SAVED AND PROTECTED FROM DAMAGE.
- ALL DISTURBED AREAS TO BE SEEDED WITH RYE GRASS AT A RATE OF 200 LBS. PER ACRE WITHIN 10 DAYS OF CONSTRUCTION. CONTRACTOR TO PREPARE GROUND PER CITY SPECIFICATIONS. COST IS SUBSIDIARY TO SITE PREPARATION AND RESTORATION.

APPROVED AS NOTED
BY CITY ENGINEER OF WICHITA

STORM SEWERS VRH 5/5/05

NOTE TO CONTRACTOR

INSPECTION AND TESTING FOR THIS PROJECT IS TO BE PROVIDED BY A LICENSED CONSULTING ENGINEERING FIRM UNDER CONTRACT WITH THE OWNER/DEVELOPER. SAID INSPECTION TO BE IN ACCORDANCE WITH THE CITY OF WICHITA STANDARD CONSTRUCTION ENGINEERING PRACTICES AND CERTIFIED BY A LICENSED PROFESSIONAL ENGINEER. NO WORK SHALL BE PERFORMED IN DEDICATED EASEMENTS OR THE PUBLIC RIGHT-OF-WAY BY THE CONTRACTOR WITHOUT SUCH INSPECTION NOR SHALL ANY WORK BE COMMENCED IN DEDICATED EASEMENTS OR PUBLIC RIGHT-OF-WAY WITHOUT WRITTEN AUTHORIZATION BY THE CITY ENGINEER.

**PRIVATE
STORM SEWER PLANS FOR**

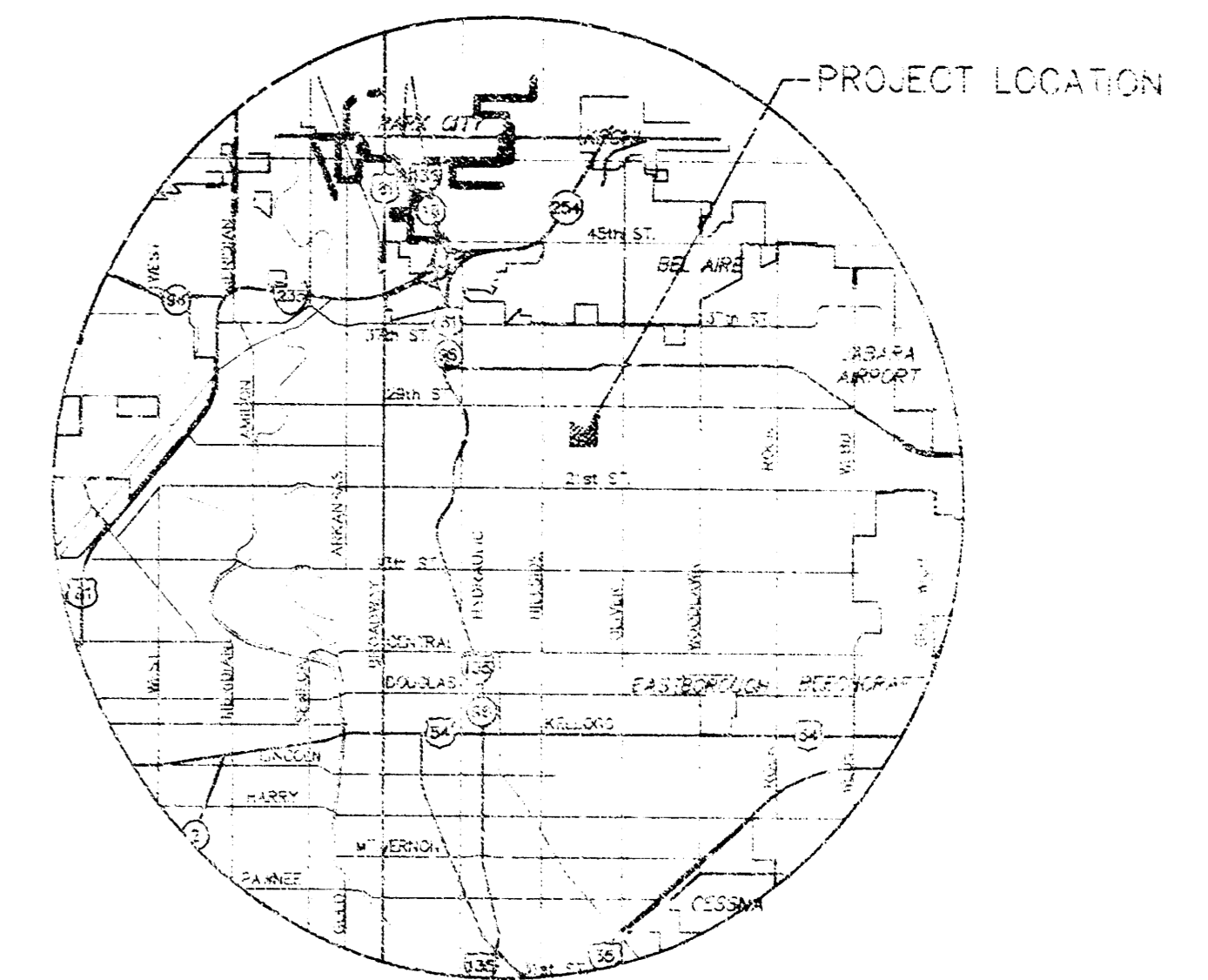
USD #259 BUCKNER ELEMENTARY SCHOOL

AN ADDITION TO THE CITY OF WICHITA
SEDGWICK COUNTY, KANSAS

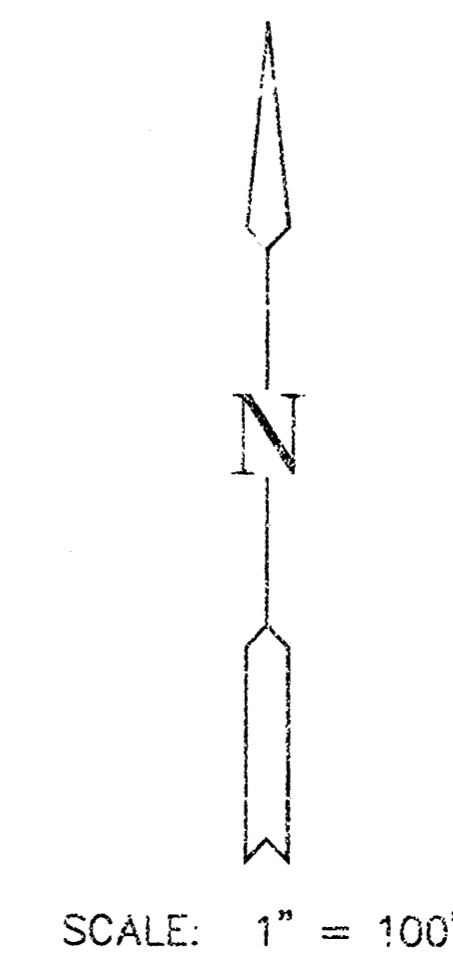
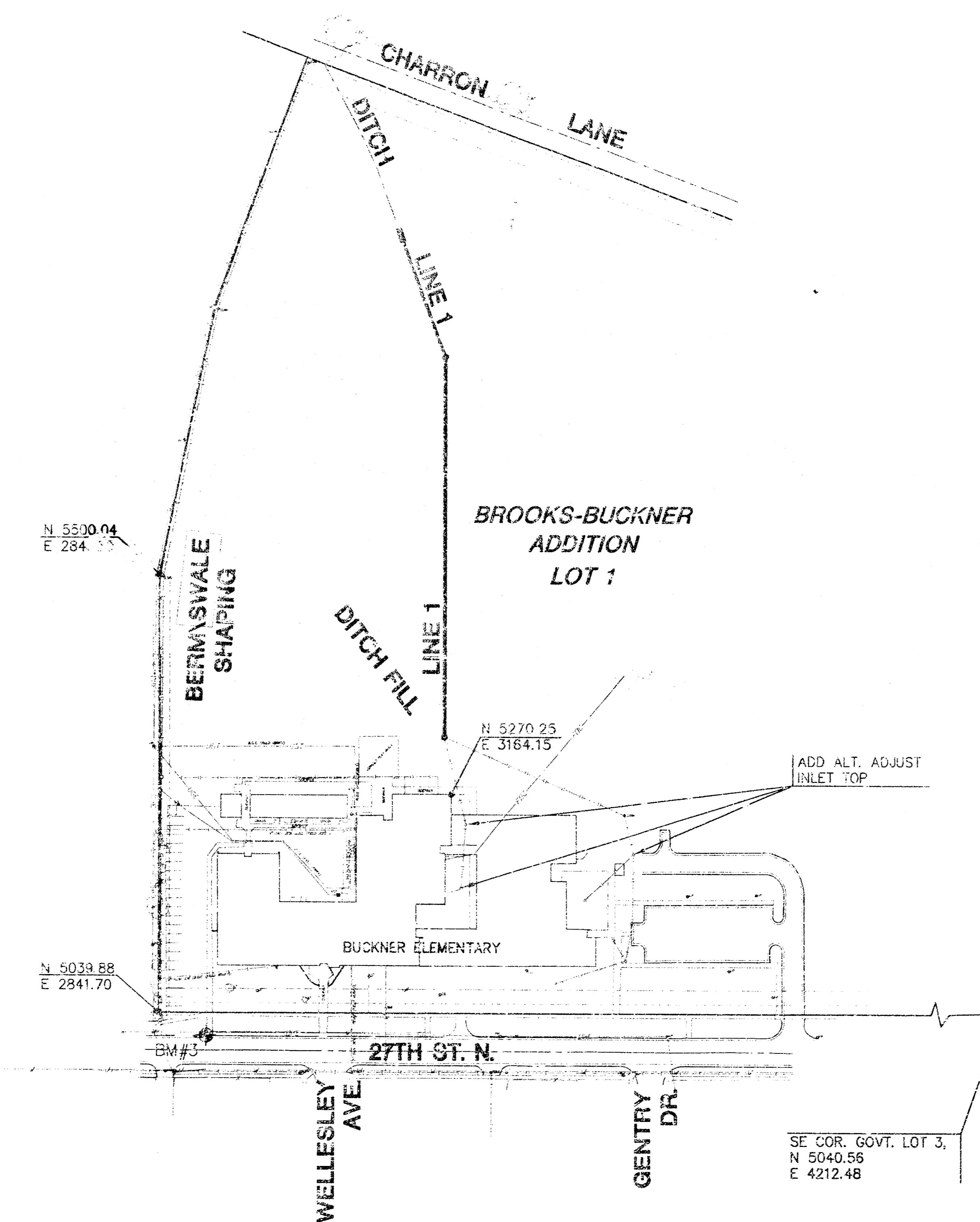
PROJECT NO. 1548 PPS

JIM ARMOUR, P.E. - CITY ENGINEER

OCA 607861



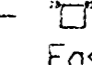
VICINITY MAP




INDEX TO DRAWINGS

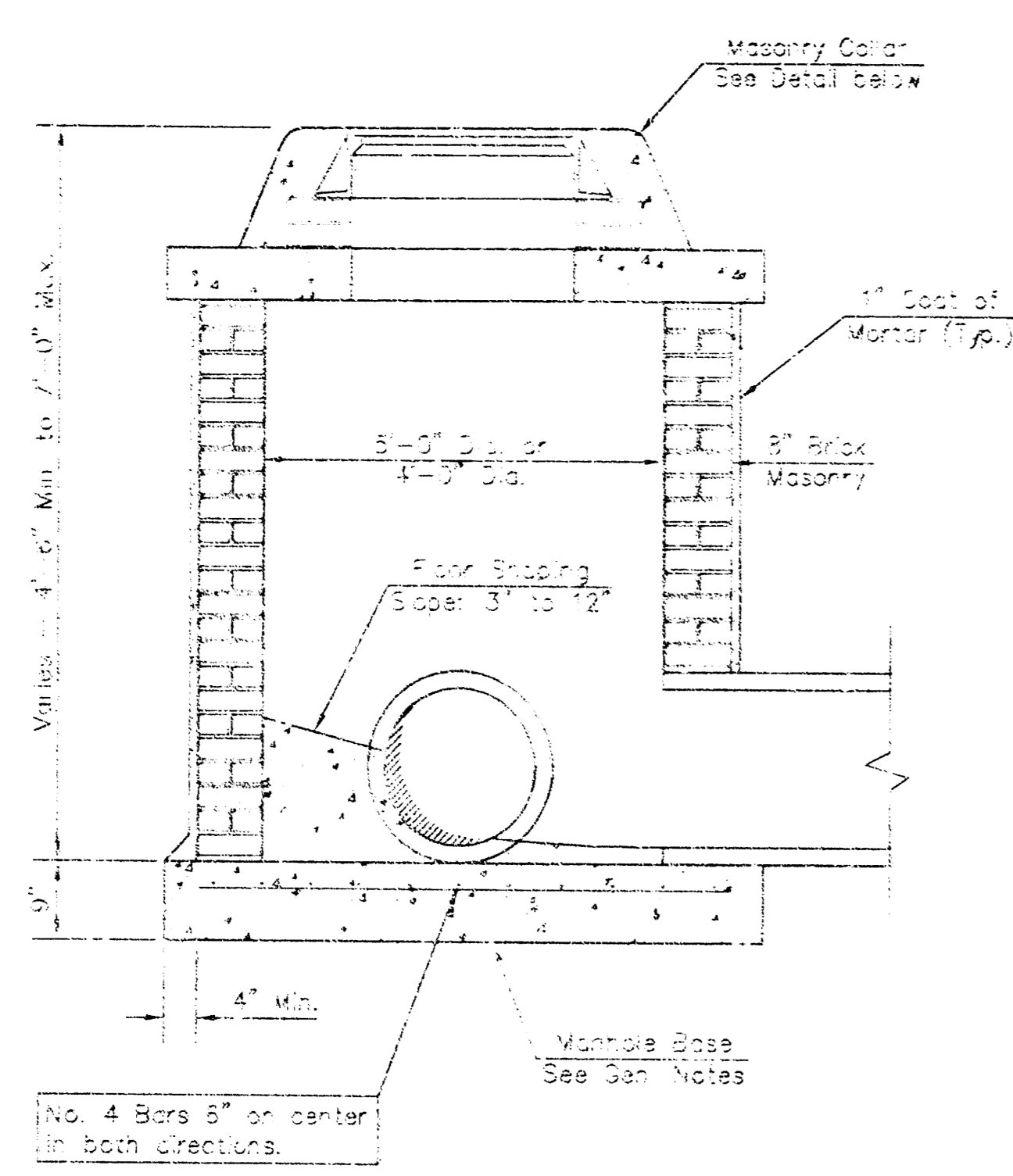
SHEET NO.	DESCRIPTION
1	TITLE SHEET
2	MANHOLE DETAILS
3-4	SWS LINE 1
5	PLAT

BENCHMARKS

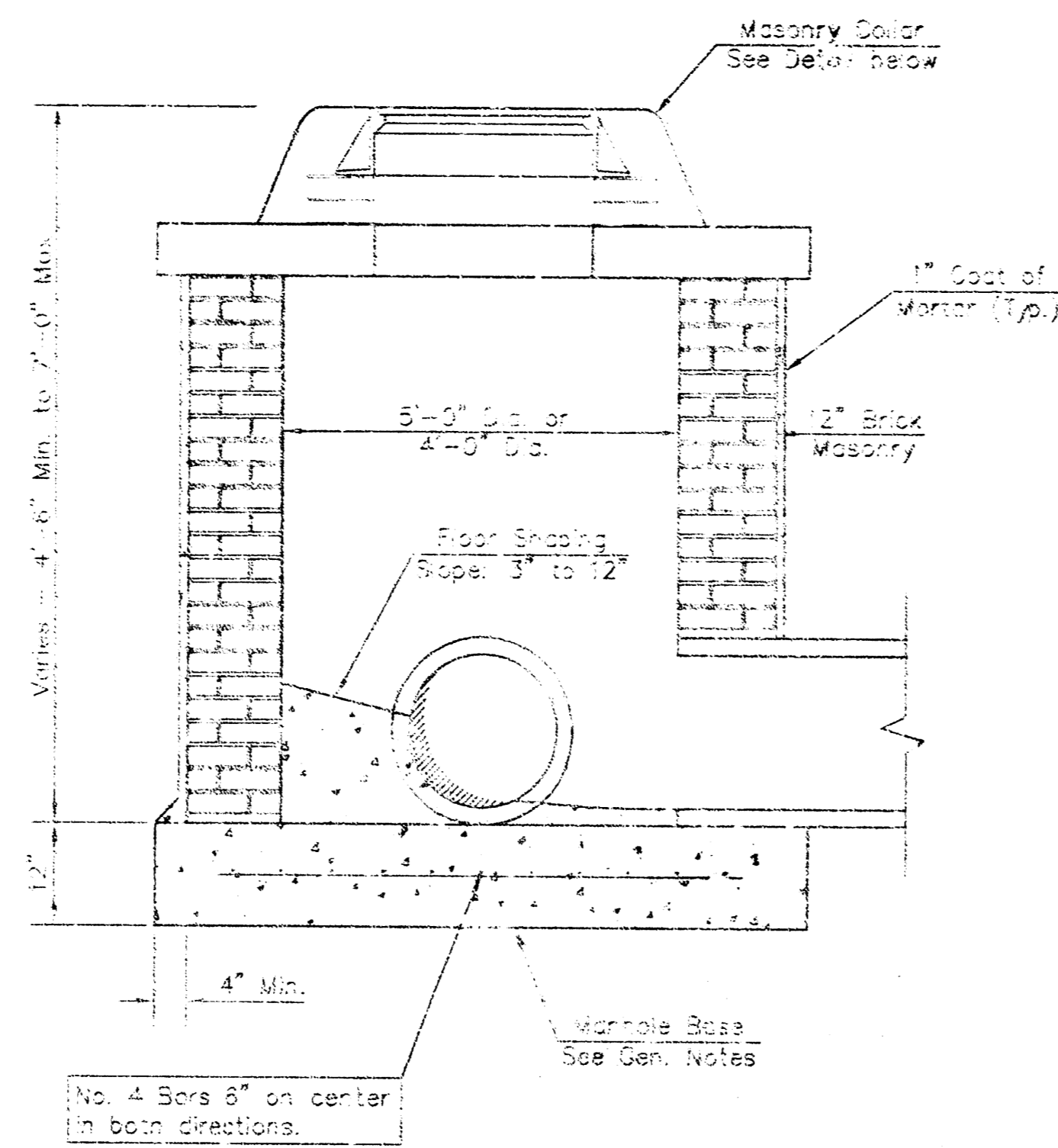
BM #3 —  Top of curb on N. side of 27th Street North 57.5' East of power pole at Southwest corner of Buckner Elementary School property. (N 5015.42, E 2894.14)
Elevation=157.79 (City datum)
1029.61 (USGS)



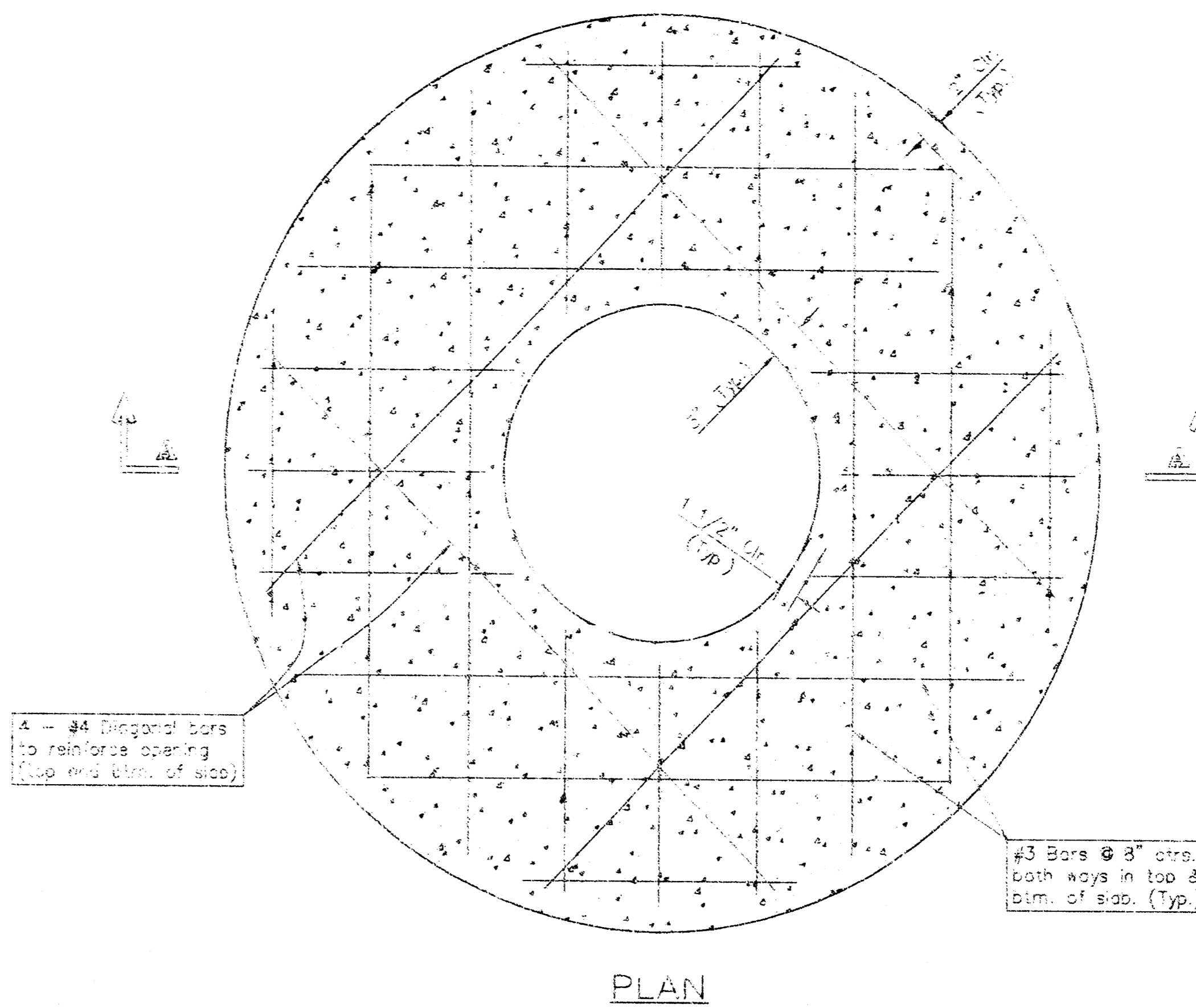
 MKEC ENGINEERING CONSULTANTS 411 N. WEBB ROAD WICHITA, KS. 67206 316-684-9600	USD #259 BUCKNER ELEMENTARY SCHOOL PROJECT NAME		
	PRIVATE STORM SEWER PLANS SHEET TITLE		
	JTC DESIGN BY:	KWS DRAWN BY:	JTC CHECKED BY:
	MAY 2005 DATE	03443 JOB NO.	1 / 5 SHEET OF



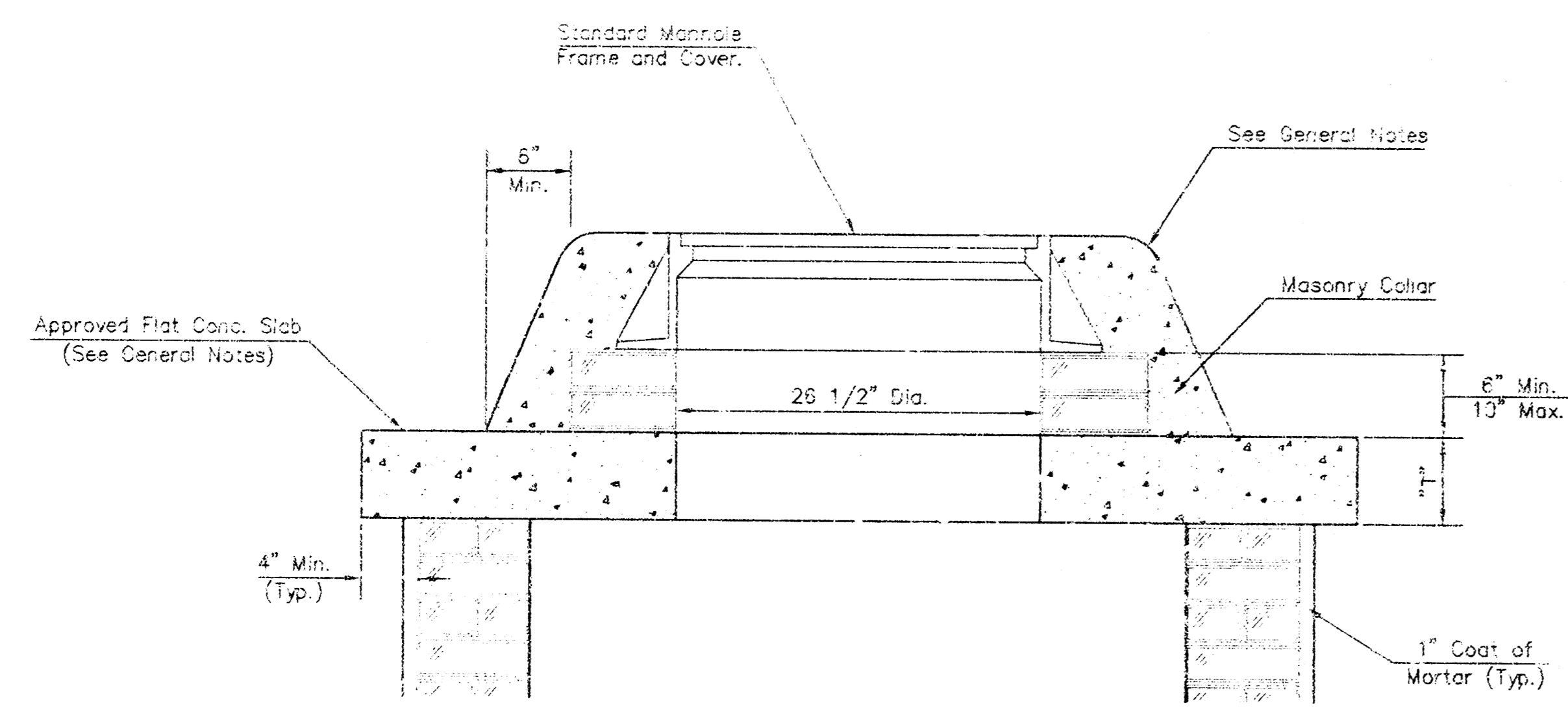
SHALLOW TYPE "A" MANHOLE



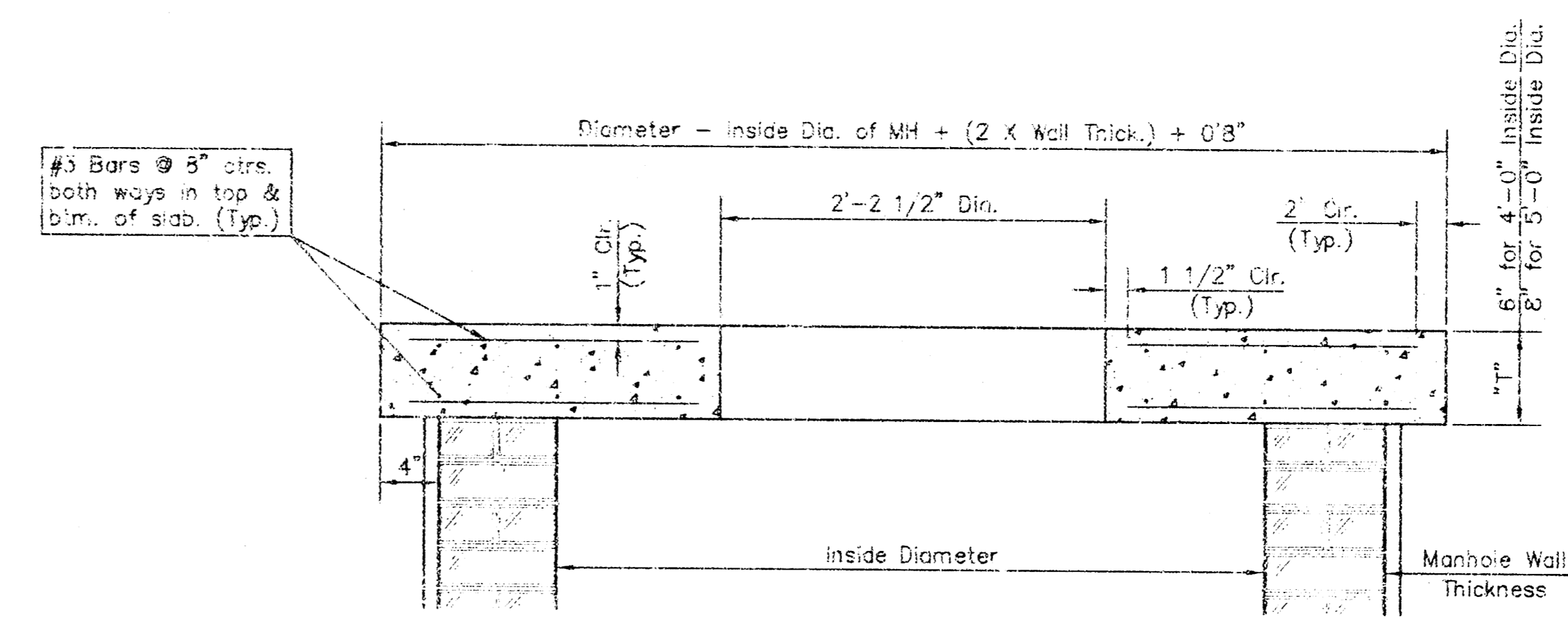
SHALLOW TYPE "B" MANHOLE



PLAN



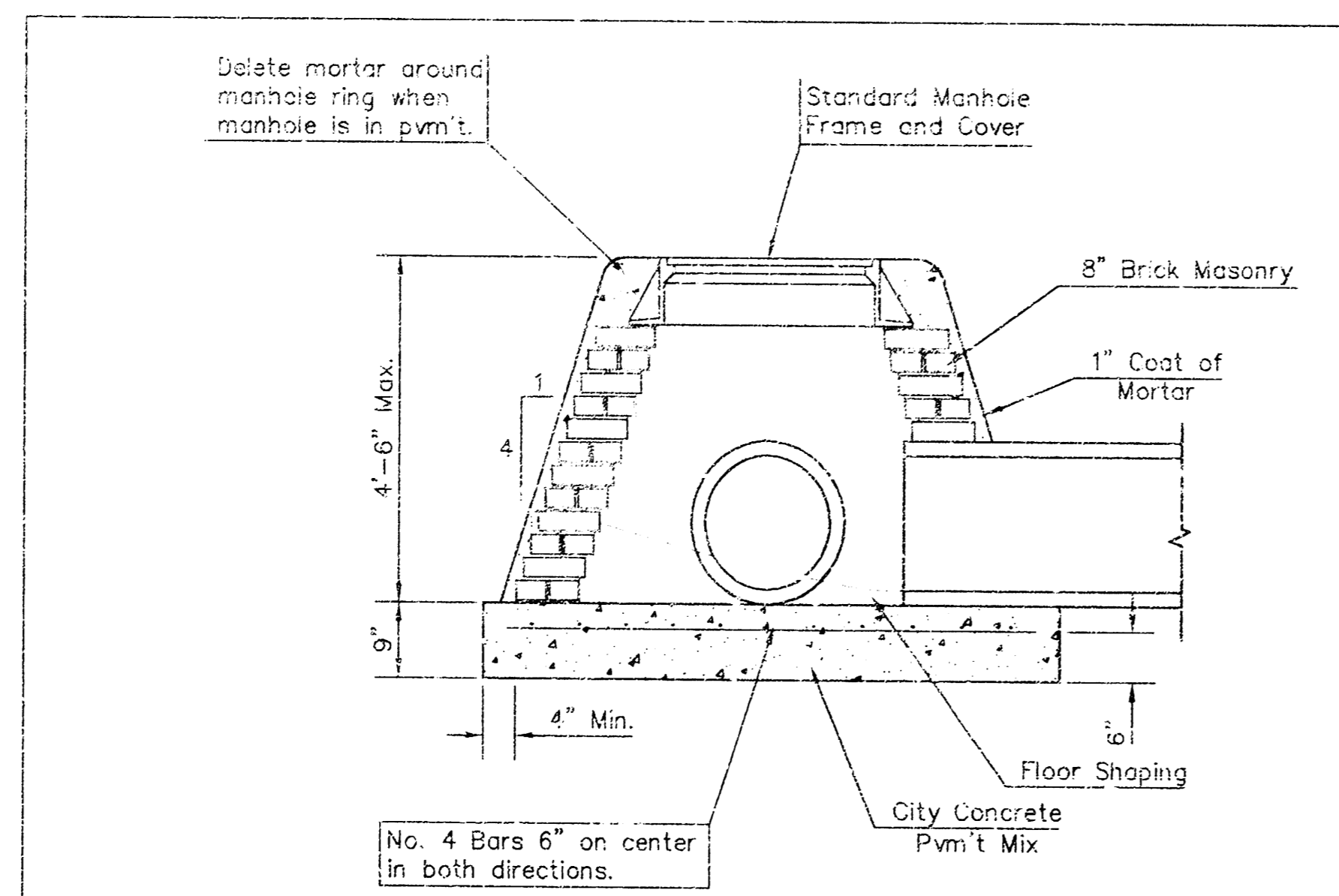
MASONRY COLLAR DETAIL



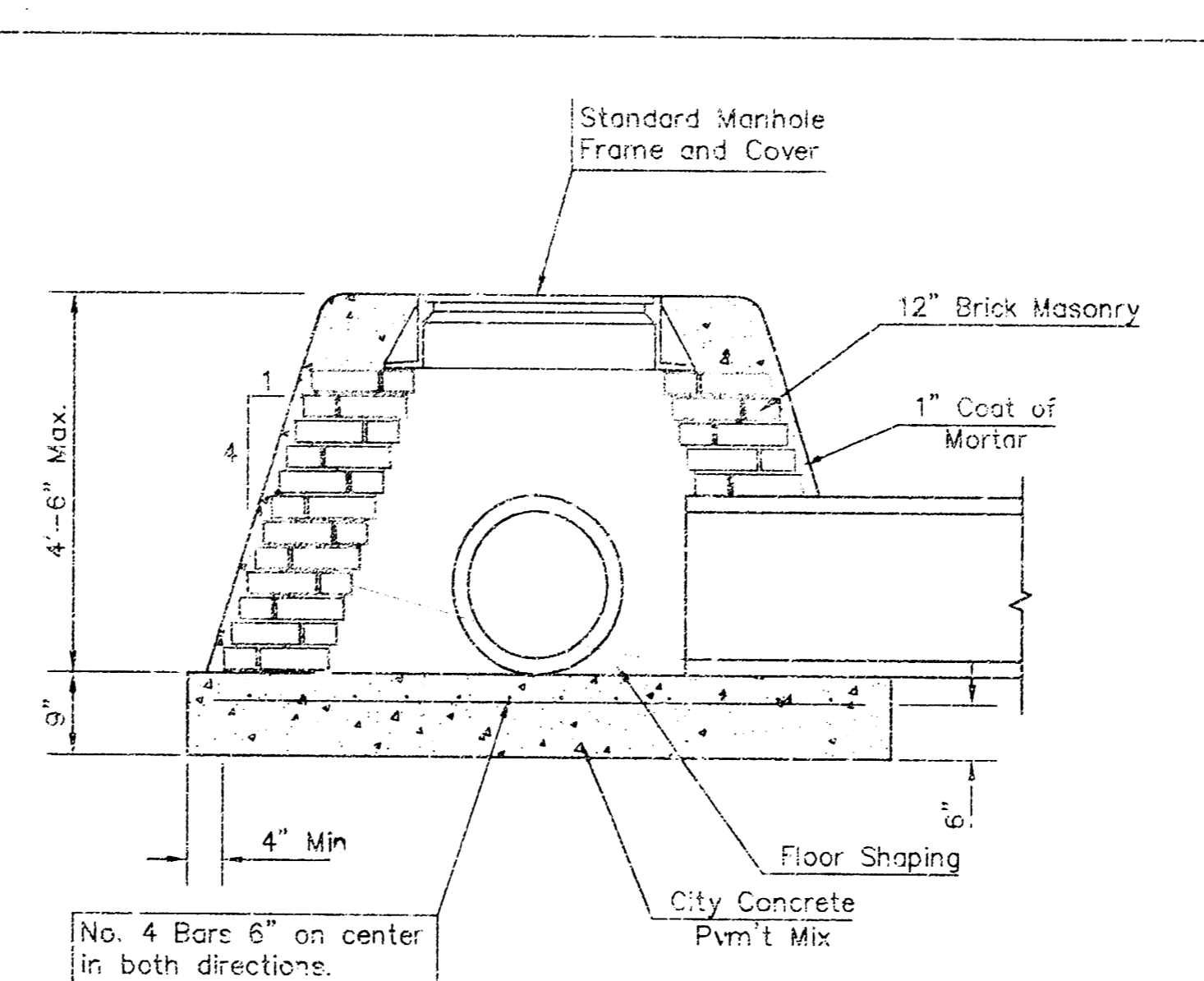
SECTION A-A
FLAT CONCRETE SLAB DETAILS

GENERAL NOTES

- Manhole used in masonry construction and shall be constructed with a concrete collar. Concrete used in manhole bases shall conform to the requirements of concrete for concrete pavement construction as specified in the city standard paving specifications using city concrete cement mix without air entraining admixtures. Rebar shall be placed around the manhole ring as shown on the drawings when manholes are constructed in improved areas. Type "A" manholes can be used on streets when the manhole is not located within public street pavement. Manholes constructed where pipe sizes are greater than 24 inches shall have an inside diameter of 4 inches. Manholes shall have pipe sizes are 24" or larger shall have an inside diameter of 5". Completed manhole shall be tight to leaks and water tight.
- Reinforcing steel shall be installed in the manhole bases and shall consist of no. 4 bars spaced 6" on center in both directions. The manhole cover reinforcement shall be placed 2" above the top of the manhole base. Reinforcing steel shall be installed in the manhole bases. Reinforcing steel shall be included in the unit price bid for the manhole.
- The floors of all manholes shall be finished with a channel such that the manholes will be tight and free of areas where solids could be deposited. Sewage flows through the manhole from inlet pipe to the outlet pipe. Flow channels shall be finished to match the bottom flanges of the inflowing pipes. The outflowing pipe as shown by the drawings. Manhole floors shall have slopes of 3 inches per foot in the direction of the flow channels. Pipes into manholes shall have the top half removed to rest lines for the full pipe diameter of the manhole. Manhole floors shall be shaped around the bottom half of the pipe which carries the flow channel.
- Pipes installed within the excavation made for the manhole shall be cradled with concrete to the limits of the manhole excavation. When clay pipe is used, the cradle shall extend to the first joint outside the manhole. The cradle shall be terminated at the clay pipe joint in a manner which will maintain the flexibility of the joint. Cost of cradle within manhole excavation or to clay pipe joints adjacent to manhole shall be included in the unit price bid for the manhole.
- Manhole cover castings and manhole frame castings shall conform to the requirements as indicated in the standard specifications and as shown in the standard detail drawings.
- The crowns of inflowing pipes shall never be set lower than the crown of the outflowing pipe.
- Standard shallow manholes type "A" and "B" shall be paid for at the unit price bid per each for the type and diameter indicated. Standard special shallow manholes type "A" and "B" shall be paid for at the unit price bid per each for the type indicated. All standard shallow manhole diameters will be 4 unless indicated otherwise.
- All brick used in manhole construction shall meet grade SW of ASTM C652 or C62-87.



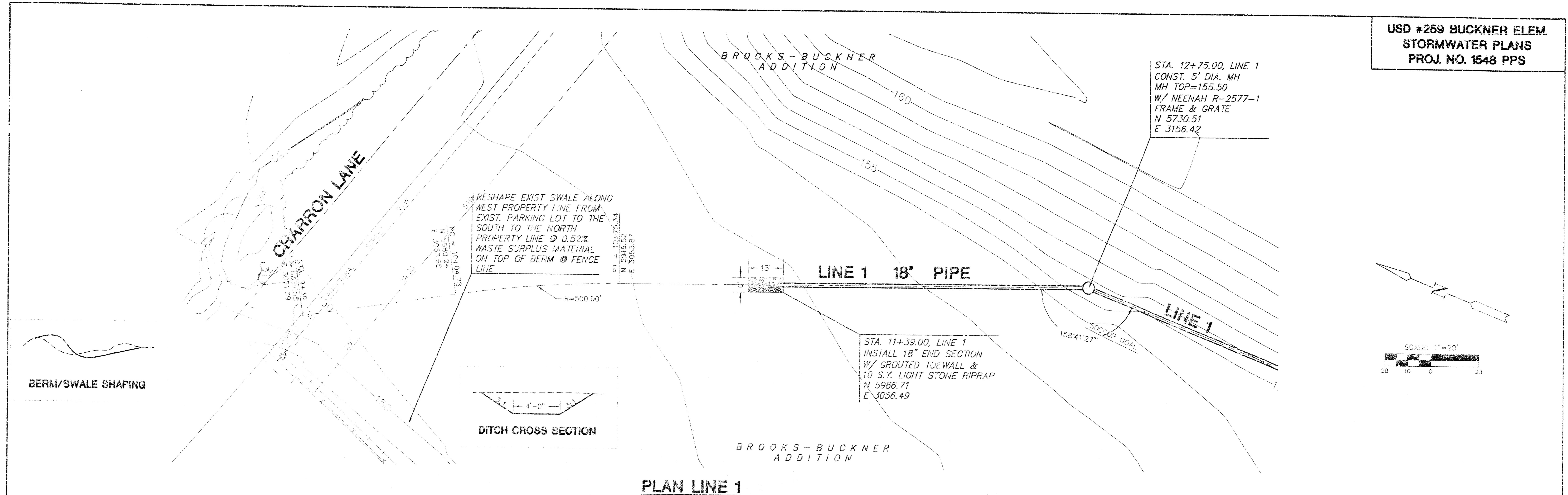
SPECIAL SHALLOW TYPE "A" MANHOLE



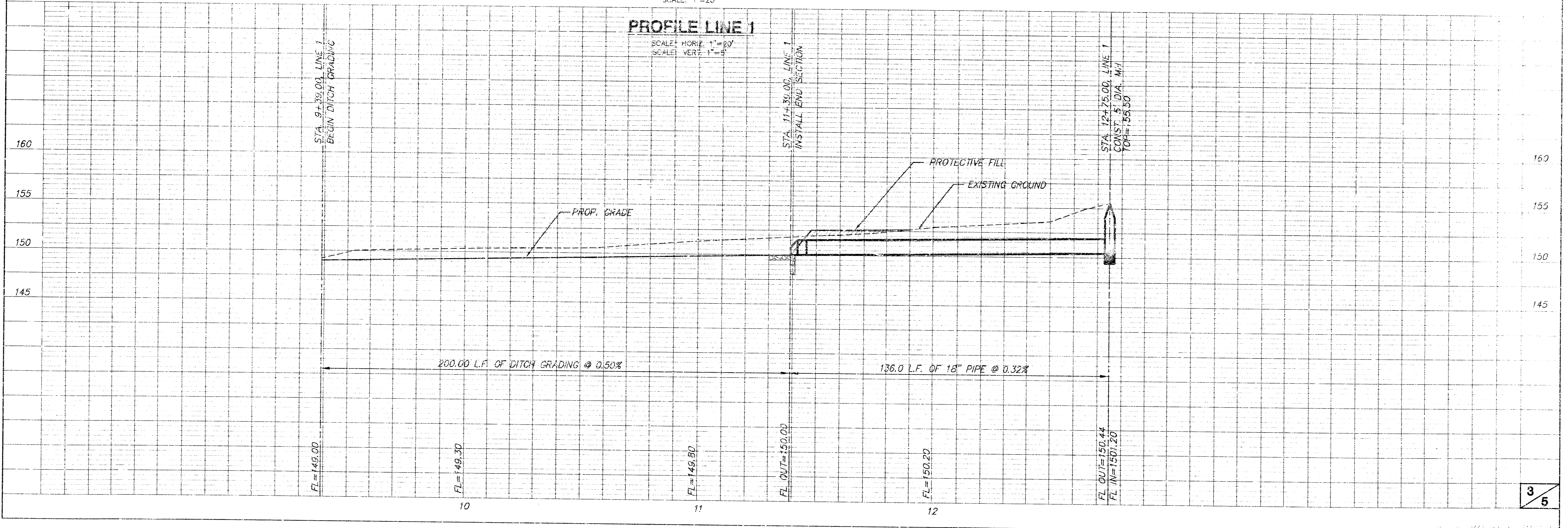
SPECIAL SHALLOW TYPE "B" MANHOLE

REV. 1/05/01, MCG

<p>THE CITY OF WICHITA</p>	<p>STANDARD/SPECIAL SHALLOW MANHOLES TYPE 'A' & 'B'</p>	
	<p>JIM ARMOUR, P.E. - CITY ENGINEER</p>	
<p>CITY ENGINEER'S OFFICE CITY HALL SEVENTH FLOOR 432 NORTH MAIN STREET WICHITA, KANSAS 67202 (316) 248-1001 (316) 248-4116 FAX</p>	<p>PROJECT NUMBER 1548 PPS</p>	<p>INDEX CODE 607661</p>
<p>DATE MAY 05</p>	<p>SHEET 2 OF 5</p>	
<p>Special Shallow MH Type A & B.DWG</p>		



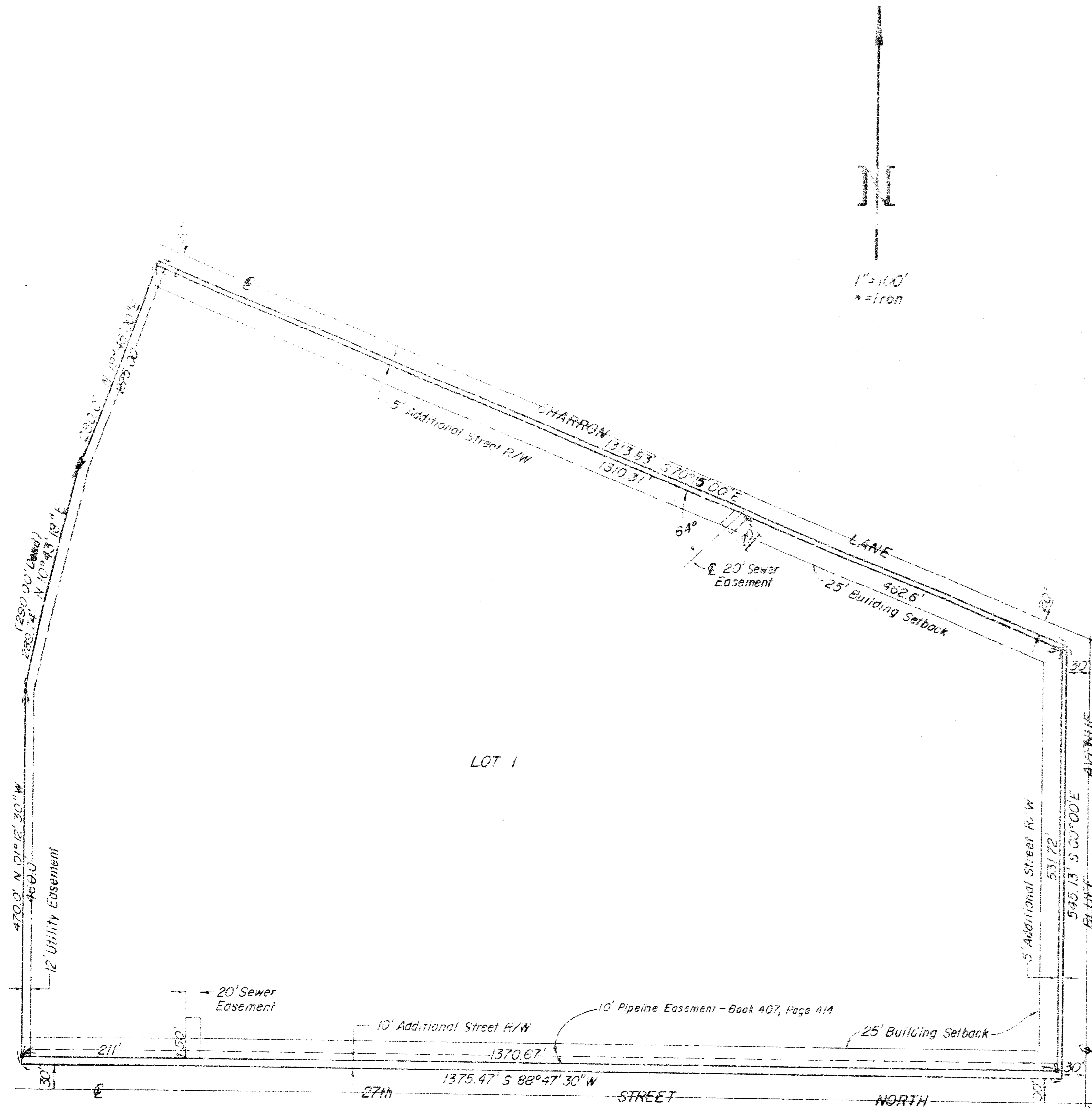
PLAN LINE 1
SCALE: 1"=20'



PROFILE LINE 1
SCALE: HORIZ. 1"=20'
SCALE: VERT. 1"=5'

BROOKS-BUCKNER ADDITION

TO WICHITA, SEDGWICK COUNTY, KANSAS



STATE OF KANSAS, COUNTY OF SEDGWICK, SS:
 I, Don E. McLaughlin, a Civil Engineer in the State and County of Sedgewick County, Kansas, do hereby certify that I have surveyed and plotted the BROOKS-BUCKNER ADDITION to Wichita, Sedgewick County, Kansas, into a lot, an avenue, a street and a lane, the same being approximately 50' x 200' in the accompanying plat and recorded as follows: A tract of land beginning at the S.E. corner of Government Lot 3 in the N.W. 1/4 of Section 2, Township 27 South, Range 1 East of the 6th P.M. thence west along the South line of Government Lots 3 and 4, 1425 feet; thence with an angle to the right of 109°00' for a distance of 495 feet; thence with an angle to the right of 109°00' for a distance of 280 feet; thence with an angle to the right of 89°00' for a distance of 1375.47 feet more or less to a point on the East line of said Lot 3; thence South 287.1 feet more or less to the place of beginning, except that part required for street right of way.
 Don E. McLaughlin, Surveying Engineer

Know all men by these presents that the undersigned, property owners of the 1/4 acre above set forth in the Civil Engineer's certificate, have caused the same to be surveyed and plotted into a lot, an avenue, a street and a lane, the same to be known as BROOKS-BUCKNER ADDITION to Wichita, Sedgewick County, Kansas. Easements for the construction and maintenance of public utilities, as indicated on the accompanying plat, are hereby granted. The streets are hereby dedicated to and for the use of the public.
 Unified School District No. 259 (Wichita), Sedgewick County, Kansas
 Daniel R. Glickman, President
 Martin Hartley, Clerk-Treasurer

STATE OF KANSAS, COUNTY OF SEDGWICK, SS:
 Be it remembered that on this 20th day of January, 1978, before me, a Notary Public in and for said State and County, came Unified School District No. 259 (Wichita), Sedgewick County, Kansas, by Daniel R. Glickman, President, and Martin Hartley, Clerk-Treasurer, to me personally known to be the same persons who executed the foregoing instrument of writing and duly acknowledged the execution of the same. In testimony whereof I have hereunto set my hand and affixed my notarial seal the day and year above written.
 Christine Buckmaster, Notary Public
 My Commission expires April 16, 1977

This plat of BROOKS-BUCKNER ADDITION has been submitted to and approved by the Wichita-Sedgewick County Metropolitan Area Planning Commission, dated this 8th day of JANUARY, 1978.

Wichita-Sedgewick County Metropolitan Area Planning Commission
 David Barnhart, Chairman
 Robert J. Lakin, Secretary

This plat has been approved and all dedications shown hereon, if any, accepted by the Board of County Commissioners of Sedgewick County, Kansas, this 16th day of June, 1978.

Attest:
 Dorothy K. White, County Clerk

This plat has been approved and all dedications shown hereon, if any, accepted by the City Commission of the City of Wichita, Kansas, this 23rd day of MAY, 1978.

Connie A. Pickett, Mayor
 Donald C. Gistick, City Clerk

STATE OF KANSAS, COUNTY OF SEDGWICK, SS:
 This is to certify that this instrument was filed for record in the Register of Deeds Office at 2:00 PM on the 27th day of JUNE, 1978.

Bette F. McCarr, Register of Deeds
 Pat Kettler, Deputy

Entered on transfer record this 8th day of June, 1978.
 Dorothy K. White, County Clerk

20.00