

# GODDARD FACILITY IMPROVEMENTS

## #1 - New Elementary School

GODDARD PUBLIC SCHOOLS U.S.D. No. 265

201 S. MAIN, GODDARD, KANSAS

### SANITARY SEWER

CITY OF WICHITA PRIVATE PROJECT NO.1558PPS (607861)

JIM L. ARMOUR, P.E.-CITY ENGINEER

APPROVED AS NOTED  
BY CITY ENGINEER OF WICHITA,  
BY WICHITA WATER & SEWER DEPARTMENT,  
& BY WICHITA FIRE DEPARTMENT

Water Mains (Pub Wks)

Water Mains (W & S)

Fire Prot. Line

#### NOTE TO CONTRACTORS

##### Public Property:

Inspection and testing for the waterline is to be provided by a Licensed Consulting Engineering Firm under contract with the Owner/Developer. Said inspection to be in accordance with the City of Wichita standards construction engineering practices and certified by a Professional Engineer Licensed in the state of Kansas. No work shall be performed in dedicated easements or public right-of-way by the Contractor until such inspection is arranged for and required bonds have been submitted and approved by the City nor shall any work be commenced without written authorization by the City Engineer. All Construction and Materials shall comply with the City or Wichita Specifications and Standards (on file and available in the City Engineer's Office).

##### Private Property:

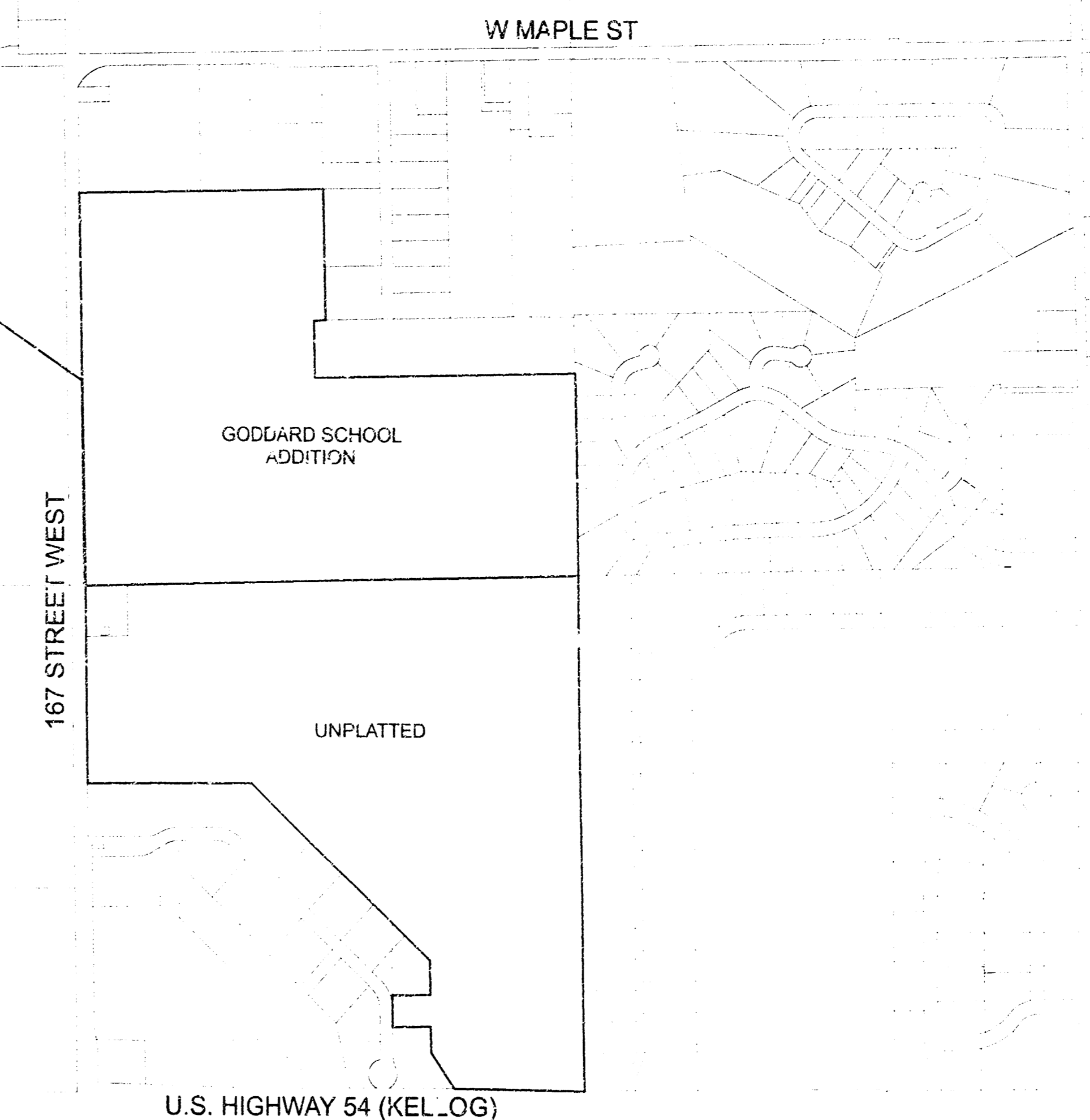
Installation and testing for the fire protection line is to be performed by a City of Wichita licensed fire protection contractor in accordance with the fire codes as adopted by the City of Wichita. All material and construction practices for the fire protection line shall comply with the fire codes as adopted by the City of Wichita (available from the City of Wichita Fire Department). The Contractor shall not commence work without notification and approval of the Wichita Fire Department. Inspection of the fire protection line is to be provided by a licensed Engineering Firm under contract with the Owner/Developer and the Fire Department. The contractor shall not start work until the project inspector is assigned to the project and is sent to the site. Any work done without inspection will be required to be uncovered for inspection.

Improvements performed under this project may not be accepted by the City of Wichita until all applicable documentation has been submitted to the City Engineer. This may include: record drawings, inspection logs, test documentation, test tapes, and a certificate of completion. The above shall be performed by the Consulting Firm contracted to inspect this project.

GENERAL NOTE:  
PROVIDE ALL MATERIALS IN ACCORDANCE WITH  
CITY OF WICHITA SPECIFICATIONS.

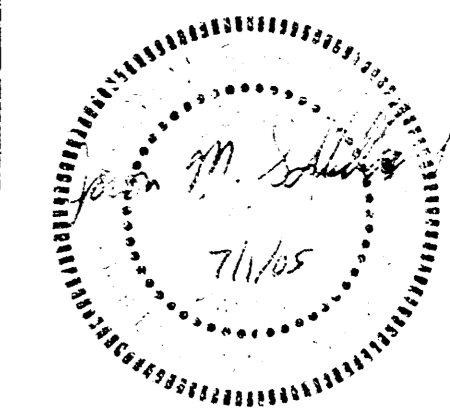
*Nowak Construction Co., Inc. Contractor  
Lofton, Wilson & Co., - Inspector  
Released 7/7/06  
As-Built  
.pdf by JDL 7/11/06*

PROJECT LOCATION



LOCATION MAP

REVISION DATE BY



**WILSON & COMPANY**  
Engineers & Architects  
1700 East 10th - Suite 1000 - Salina, Kansas 67401  
Tel: 781-827-0433 Fax: 781-827-0444

GODDARD FACILITY IMPROVEMENTS  
#1 - New Elementary School  
GODDARD PUBLIC SCHOOLS U.S.D. No. 265  
201 S. MAIN, GODDARD, KANSAS

DESIGN JLL

DRAWN DFP

DATE MAY 2005

FILE NO.  
X4-420-078

SHEET NO.

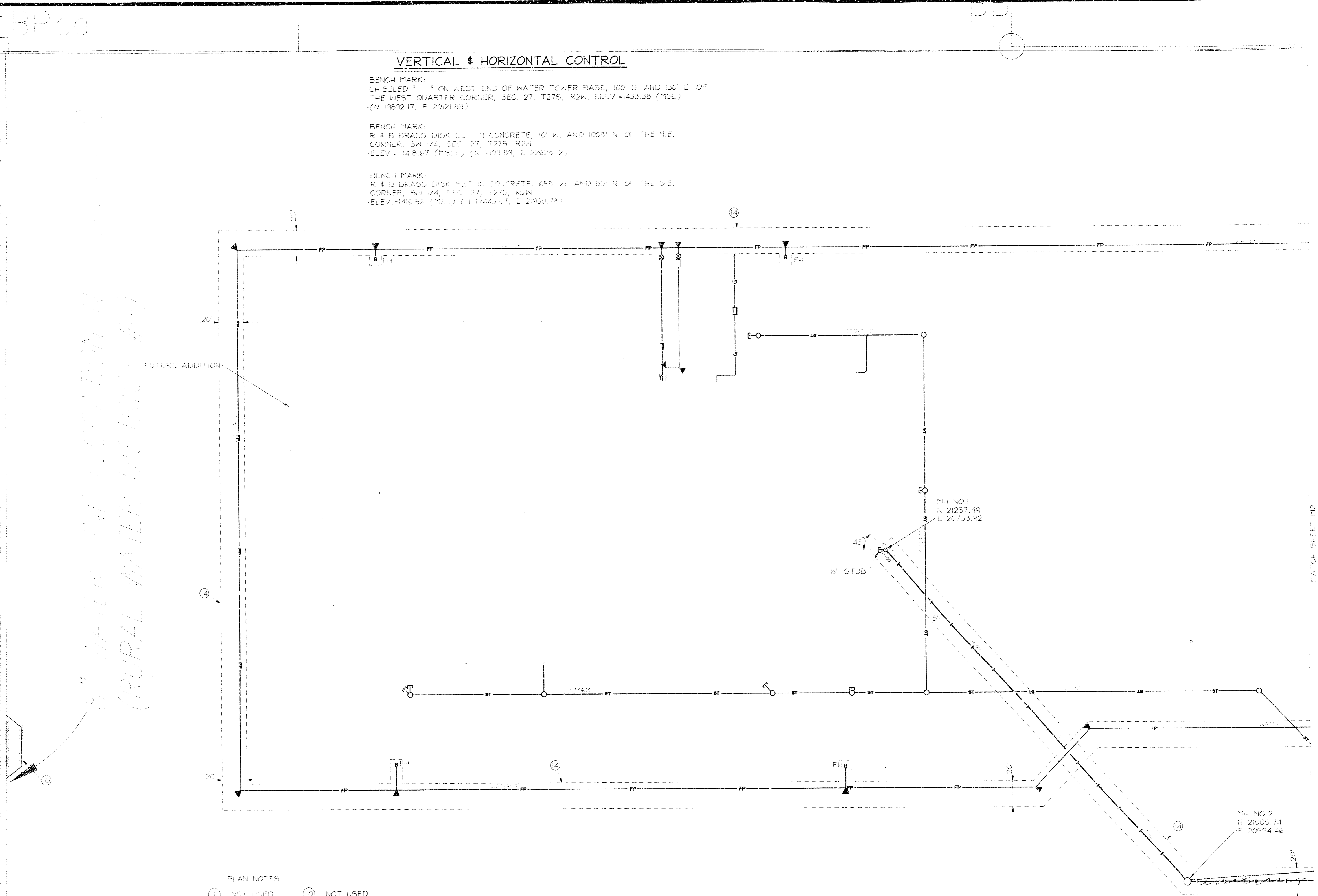
M01

**VERTICAL & HORIZONTAL CONTROL**

BENCH MARK:  
CHISELED "I" ON WEST END OF WATER TOWER BASE, 100' S. AND 130' E. OF  
THE WEST QUARTER CORNER, SEC. 27, T27S, R2W, ELE. = +1433.38 (MSL)  
(N 19892.17, E 20121.83)

BENCH MARK:  
R 4 B BRASS DISK SET IN CONCRETE, 10' W. AND 100' N. OF THE N.E.  
CORNER, SW 1/4, SEC. 27, T27S, R2W  
ELEV = +1436.67 (MSL) (N 201189, E 22629.2)

BENCH MARK:  
R 4 B BRASS DISK SET IN CONCRETE, 65' W. AND 93' N. OF THE S.E.  
CORNER, SW 1/4, SEC. 27, T27S, R2W  
ELEV = +1436.58 (MSL) (N 17445.37, E 21950.78)



8" WATER LINE EASEMENT (RURAL WATER DISTRICT #1)  
 PHONE LINES

- PLAN NOTES
- ① NOT USED
  - ② NOT USED
  - ③ NOT USED
  - ④ NOT USED
  - ⑤ NOT USED
  - ⑥ NOT USED
  - ⑦ NOT USED
  - ⑧ NOT USED
  - ⑨ NOT USED
  - ⑩ NOT USED
  - ⑪ NOT USED
  - ⑫ NOT USED
  - ⑬ NOT USED
  - ⑭ EASEMENT LINE
  - ⑮ NOT USED

**UTILITIES SITE PLAN**  
SCALE: 1" = 40'-0"

GENERAL NOTES:  
1. VERIFY ALL MANHOLE RIM ELEVATIONS AND EXTEND AS REQUIRED. EXTEND MANHOLES IN LOW AREAS 1'-0" MIN. ABOVE GRATE.

REVISION DATE #1



**MILSON & COMPANY**  
Engineers & Architects  
1700 East 10th  
Salina, Kansas 67401  
Tel: 785-827-0133 Fax: 785-827-0949

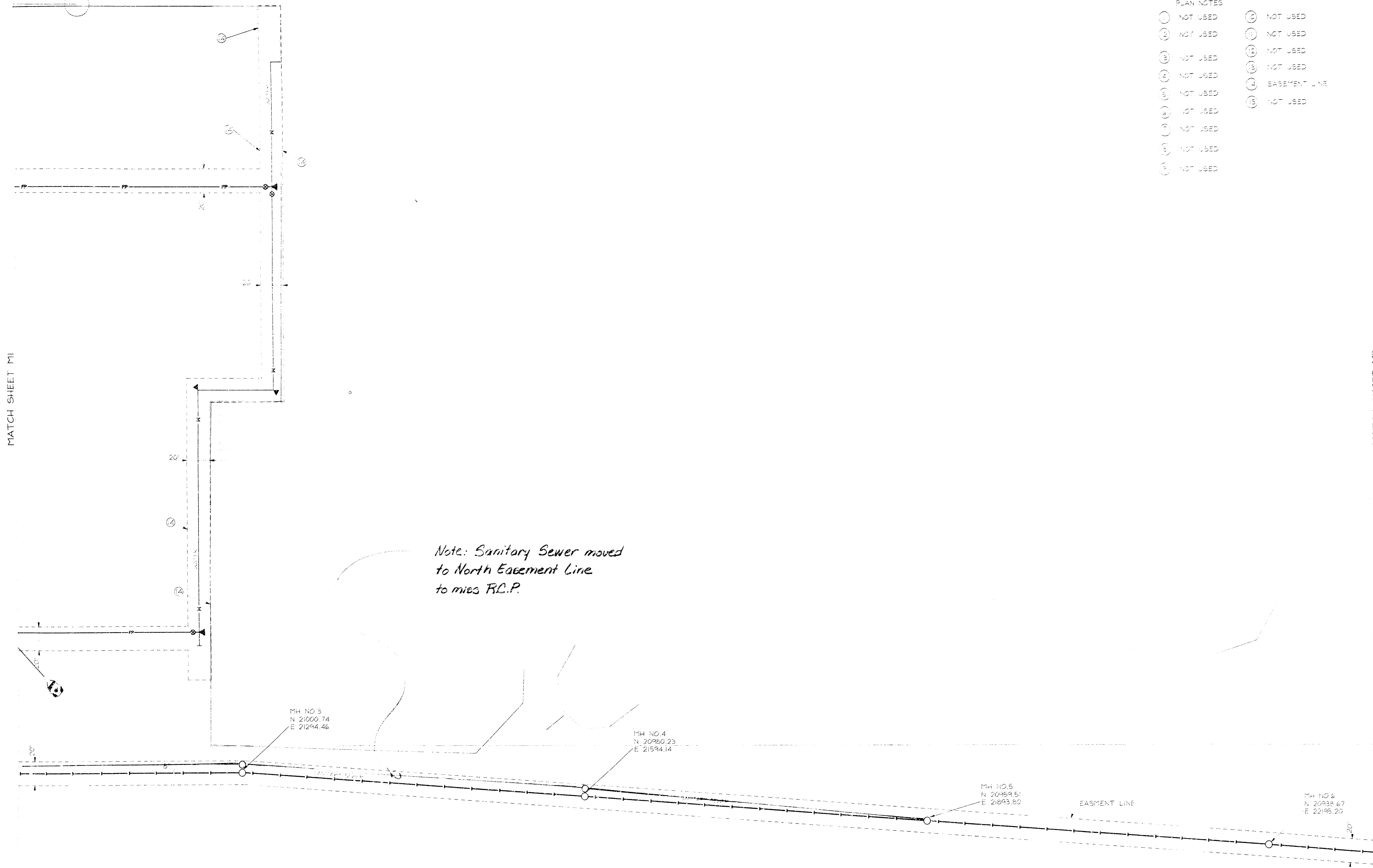
**GODDARD FACILITY IMPROVEMENTS**  
#1 - New Elementary School  
GODDARD PUBL. C. SCHOOLS, I.S.D. No. 265  
201 S. MAIN, GODDARD, KANSAS

DESIGN JLL  
DRAWN DFP  
DATE JUNE 2005  
FILE NO. X4-420-078

SHEET NO. **M1**

MATCH SHEET M1

MATCH SHEET M3



- PLAN NOTES
- (1) NOT USED
  - (2) NOT USED
  - (3) NOT USED
  - (4) NOT USED
  - (5) NOT USED
  - (6) NOT USED
  - (7) NOT USED
  - (8) NOT USED
  - (9) NOT USED
  - (10) NOT USED
  - (11) NOT USED
  - (12) NOT USED
  - (13) NOT USED
  - (14) NOT USED
  - (15) NOT USED
  - (16) NOT USED
  - (17) NOT USED
  - (18) NOT USED
  - (19) NOT USED
  - (20) NOT USED
  - (21) NOT USED
  - (22) NOT USED
  - (23) NOT USED
  - (24) NOT USED
  - (25) NOT USED
  - (26) NOT USED
  - (27) NOT USED
  - (28) NOT USED
  - (29) NOT USED
  - (30) NOT USED
  - (31) NOT USED
  - (32) NOT USED
  - (33) NOT USED
  - (34) NOT USED
  - (35) NOT USED
  - (36) NOT USED
  - (37) NOT USED
  - (38) NOT USED
  - (39) NOT USED
  - (40) NOT USED
  - (41) NOT USED
  - (42) NOT USED
  - (43) NOT USED
  - (44) NOT USED
  - (45) NOT USED
  - (46) NOT USED
  - (47) NOT USED
  - (48) NOT USED
  - (49) NOT USED
  - (50) NOT USED
  - (51) NOT USED
  - (52) NOT USED
  - (53) NOT USED
  - (54) NOT USED
  - (55) NOT USED
  - (56) NOT USED
  - (57) NOT USED
  - (58) NOT USED
  - (59) NOT USED
  - (60) NOT USED
  - (61) NOT USED
  - (62) NOT USED
  - (63) NOT USED
  - (64) NOT USED
  - (65) NOT USED
  - (66) NOT USED
  - (67) NOT USED
  - (68) NOT USED
  - (69) NOT USED
  - (70) NOT USED
  - (71) NOT USED
  - (72) NOT USED
  - (73) NOT USED
  - (74) NOT USED
  - (75) NOT USED
  - (76) NOT USED
  - (77) NOT USED
  - (78) NOT USED
  - (79) NOT USED
  - (80) NOT USED
  - (81) NOT USED
  - (82) NOT USED
  - (83) NOT USED
  - (84) NOT USED
  - (85) NOT USED
  - (86) NOT USED
  - (87) NOT USED
  - (88) NOT USED
  - (89) NOT USED
  - (90) NOT USED
  - (91) NOT USED
  - (92) NOT USED
  - (93) NOT USED
  - (94) NOT USED
  - (95) NOT USED
  - (96) NOT USED
  - (97) NOT USED
  - (98) NOT USED
  - (99) NOT USED
  - (100) NOT USED

UTILITIES SITE PLAN  
SCALE: 1" = 40'-0"

REVISION DATE BY



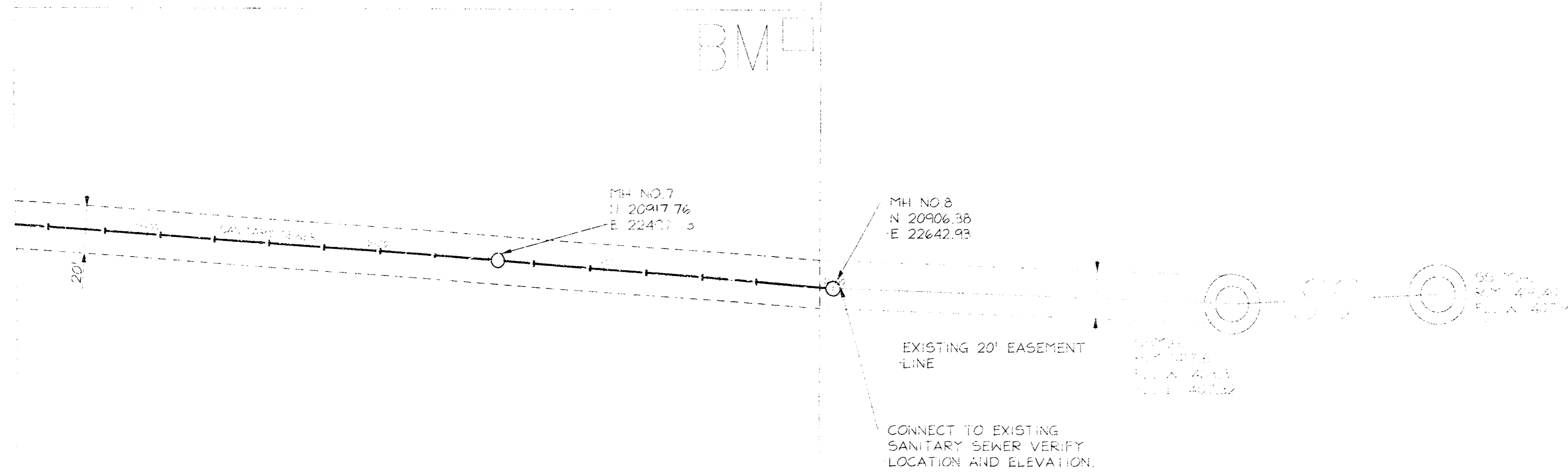
**WILSON & COMPANY**  
Engineers & Architects  
1701 East 10th - Salina, Kansas 67401  
Tel: 785-827-0113 Fax: 785-827-0989

**GODDARD FACILITY IMPROVEMENTS**  
#1 - New Elementary School  
GODDARD PUBLIC SCHOOLS U.S.D. No. 265  
201 S. MAIN, GODDARD, KANSAS

DESIGN JLL  
DRAWN DFP  
DATE JUNE 2005  
FILE NO. X4-420-078

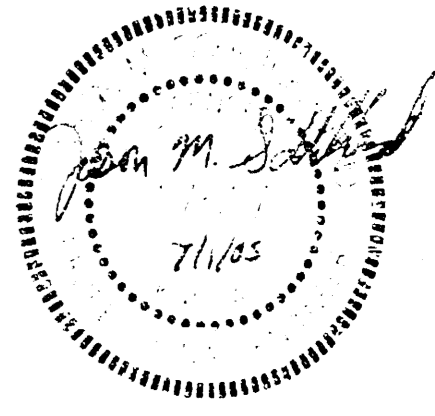
SHEET NO. **M2**

MATCH SHEET M2



**UTILITIES SITE PLAN**  
SCALE: 1" = 40'-0"

REVISION DATE BY

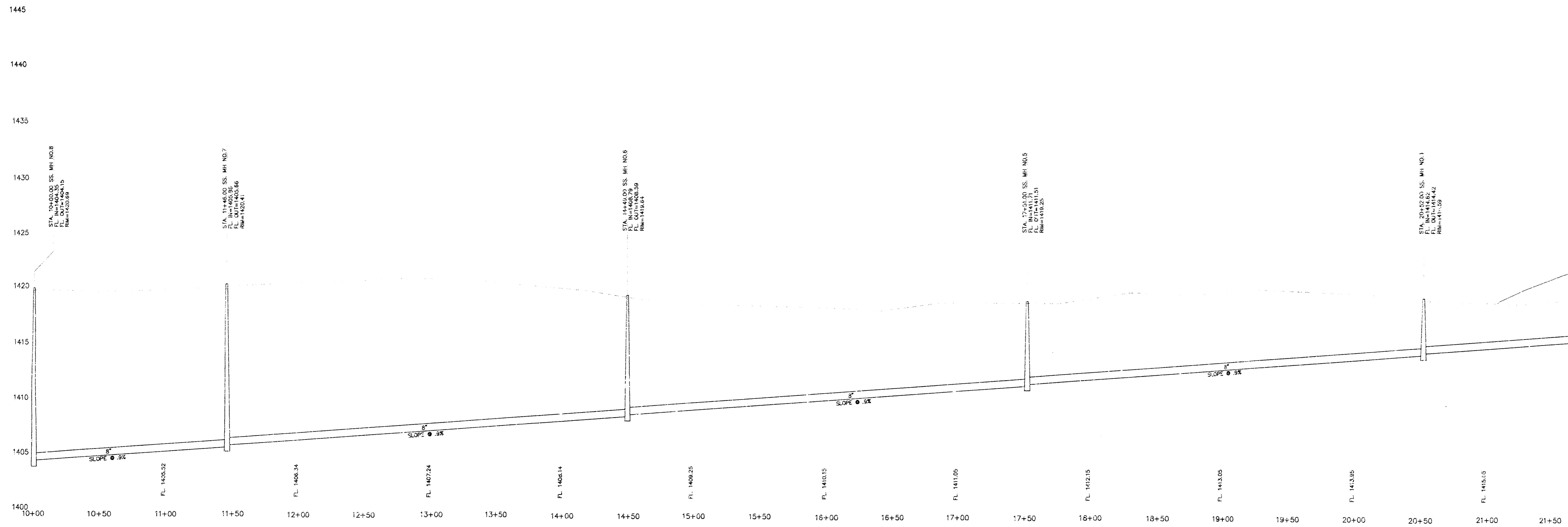


**WILSON & COMPANY**  
Engineers & Architects  
1700 East 10th - Shawnee, Mo. 64151  
Tel: 785-827-0833 Fax: 785-827-5849

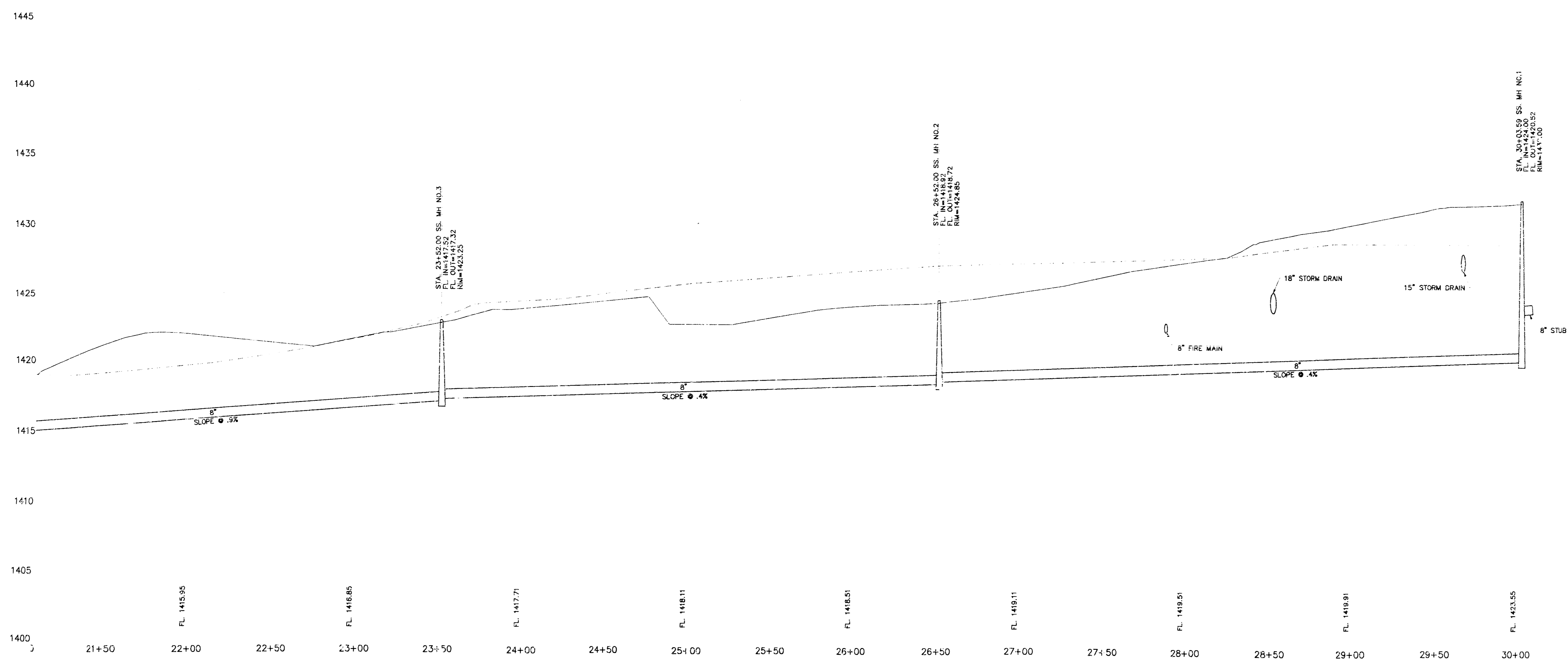
**GODDARD FACILITY IMPROVEMENTS**  
#1 - New Elementary School  
GODDARD PUBLIC SCHOOLS U.S.D. No. 265  
201 S. MAIN, GODDARD, KANSAS

DESIGN JLL  
DRAWN DFP  
DATE JUNE 2005  
FILE NO. X4-420-078

SHEET NO.  
**M3**

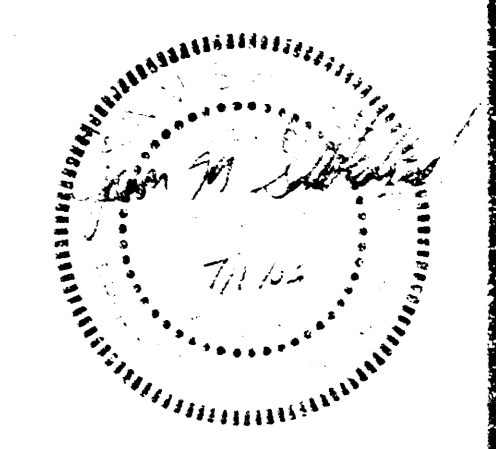


**SANITARY SEWER PROFILE**  
 SCALES:  
 1"=40' HORIZ.  
 1"=5' VERT.



**SANITARY SEWER PROFILE**  
 SCALES:  
 1"=40' HORIZ.  
 1"=5' VERT.

REVISION: DATE BY



**WILSON & COMPANY**  
 Engineers & Architects  
 1700 East Emp. Building, Topeka, Kansas 66601  
 Tel: 785-867-0433 Fax: 785-867-5939

**GODDARD FACILITY IMPROVEMENT'S**  
 #1 - New Elementary School  
 GODDARD PUBLIC SCHOOLS U.S.D. No. 265  
 201 S. MAIN, GODDARD, KANSAS

DESIGN: JLL  
 DRAWN: DFP  
 DATE: JUNE 2005  
 FILE NO.: X4-420-078

SHEET NO.  
**M4**

