

STORM SEWER PLANS FOR

WOODSPRING S.W.S. NO. 248 PROJECT NO.

472-76-245-81268-000-000-001

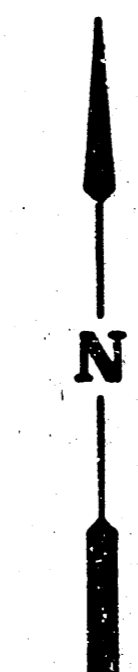
CITY OF WICHITA, KANSAS
MIKE LINDEBAK, CITY ENGINEER

JULY, 1983

GENERAL NOTES

1. The Contractor shall be responsible for preserving property lines. The Contractor shall be required to re-establish any property lines which are damaged or destroyed by his construction operations. Such lines shall be re-established by a licensed land surveyor or a licensed professional engineer in accordance with state laws.
2. The tops of inlets and manholes as noted on the plans may vary so as to meet proposed top of curb elevations or pavement elevations. The Field Engineer shall locate inlets and manholes with reference to proposed paving plans of the pertinent streets.
3. All concrete shall be Standard Paving Mix unless otherwise noted.
4. The riprap for this project shall be type 3. The type 3 riprap shall be 12" riprap. The rock for riprap and gravel protection shall be hard, dense, durable and shall be reasonably well graded. The size range of rock used shall be a maximum of one cubic foot and a minimum of 1 1/2".
5. Contractor shall avoid uncovering existing water lines unless absolutely necessary. Uncovering shall be done only in the presence of a Water Department Engineer.

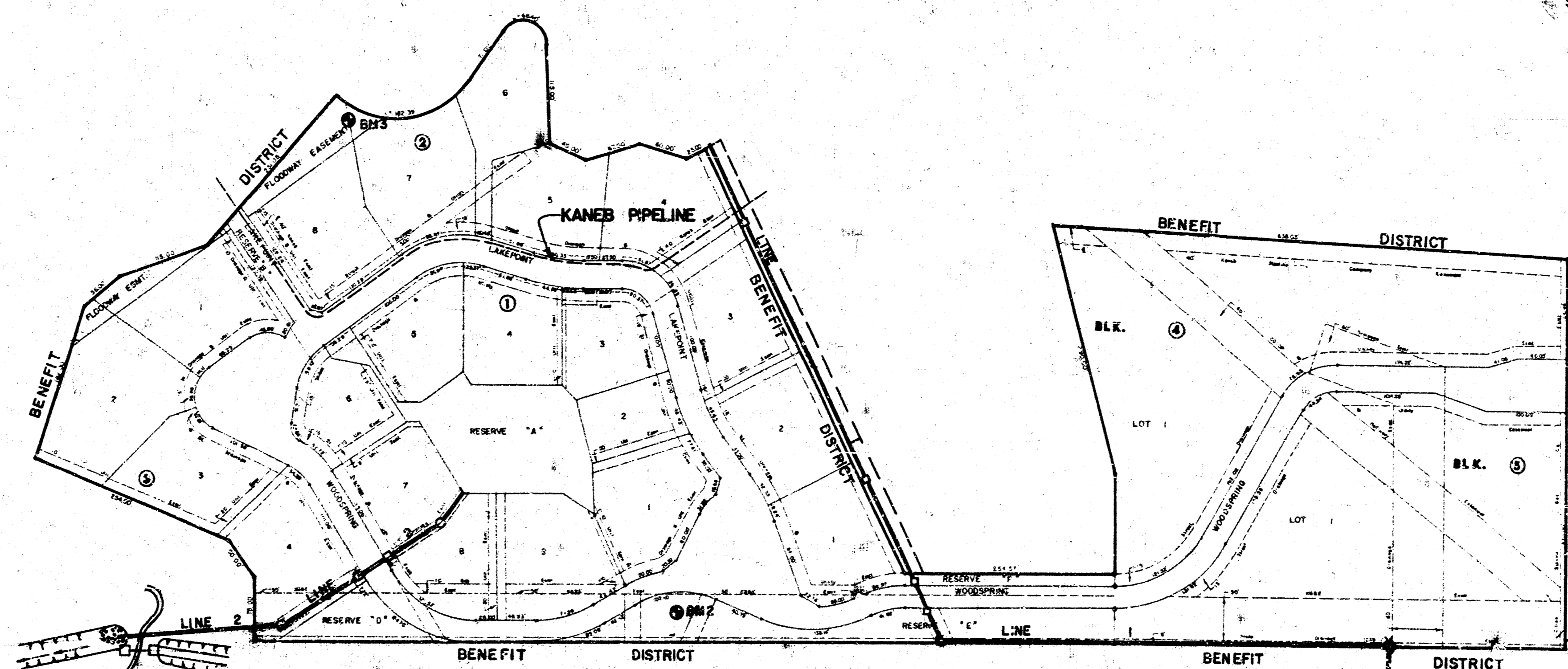
CAUTION:
HIGH PRESSURE KANEB PIPELINE.
CONTACT 24 HOURS PRIOR TO EXCAVATION. CALL
JIM STRICTLAND AT: 1-316-262-1408.



Scale: 1" = 100'

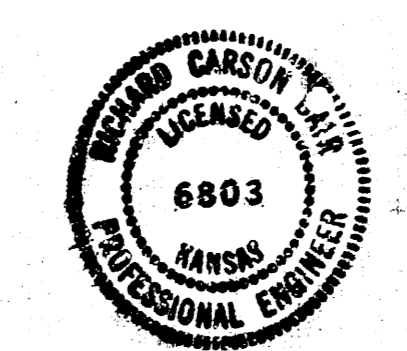
INDEX TO DRAWINGS

SHEET NO.	DESCRIPTION
1	TITLE SHEET
2	LINE 1
3	LINE 1
4	LINE 1
5	LINE 2
6	Drop Inlet Details
7	Standard Type IA Curb Inlet Details
8	Final Plat
889	Reinforced Concrete Manhole &
10	Ditch inlet Type I



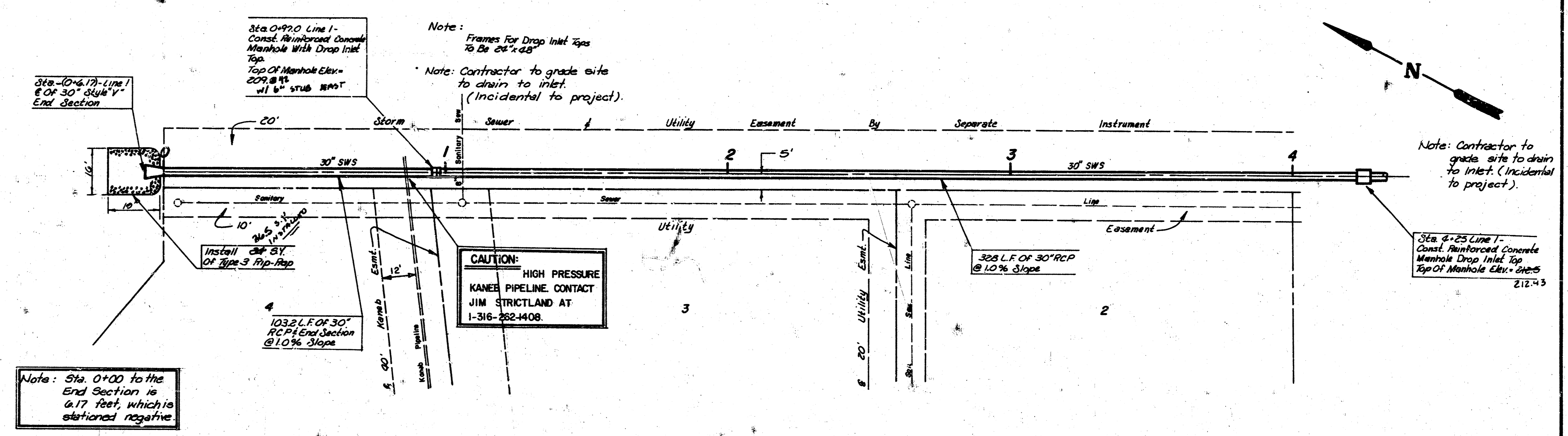
AS BUILT PLAN
4-3-84
MCG

- Woodspring S.H.'s
- BM 1 Rim of existing manhole 1 - 0. Elev. 205.32
 - BM 2 Spike stake in south face of KOLE "T" pole. Elev. 211.32
 - BM 3 Square cut on southeast corner of pond dam. Elev. 207.86

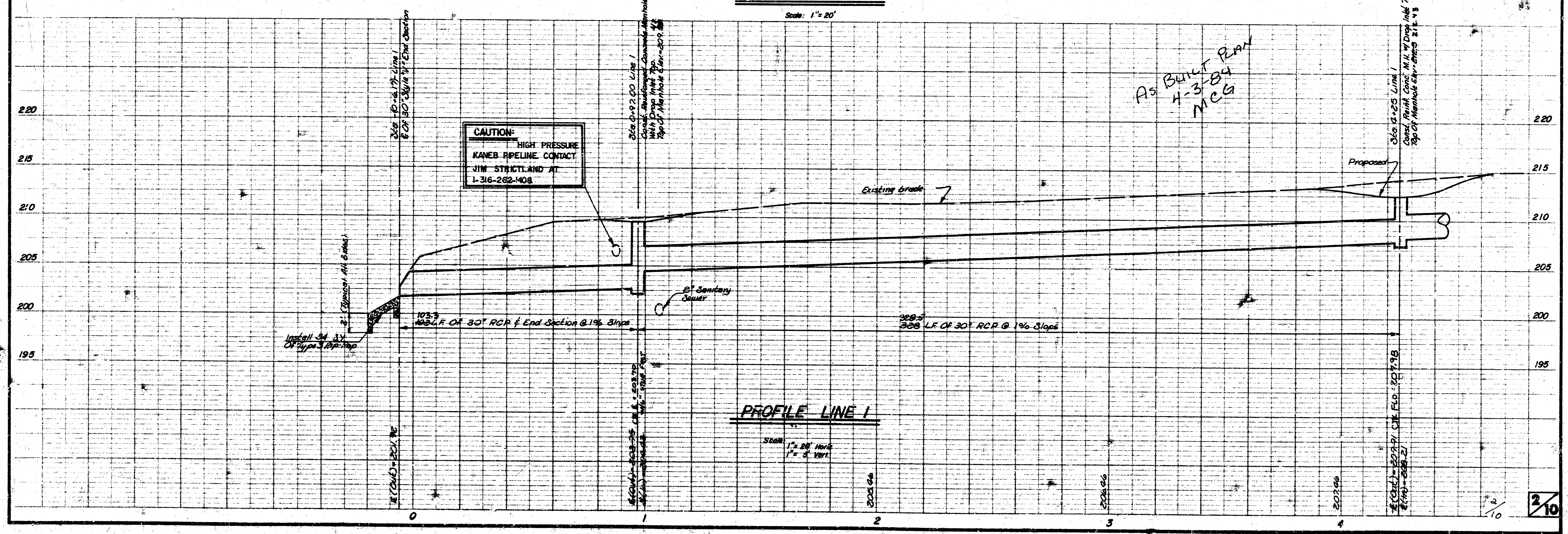


	WOODSPRING STORM WATER SEWER PLAN	REVISION NO. 1 DATE JULY 1983
	MID-KANSAS ENGINEERING CONSULTANTS PA 240 NORTH ROCK ROAD SUITE 130 WICHITA, KANSAS 67206	SHEET 1 OF 10

WOODSPRING STORM WATER SEWER
PROJECT NO.
472-76-245-81268-000-000-001

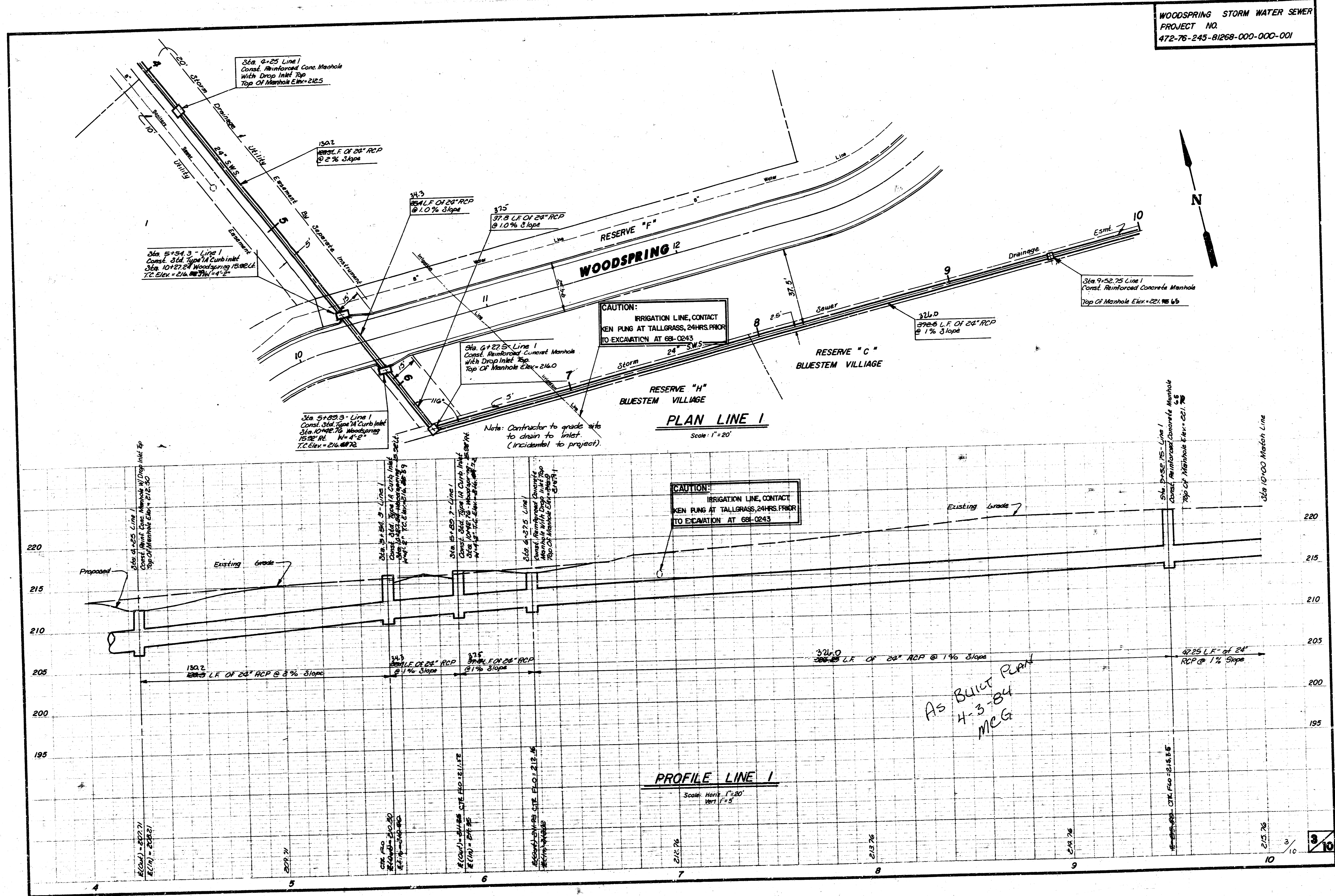


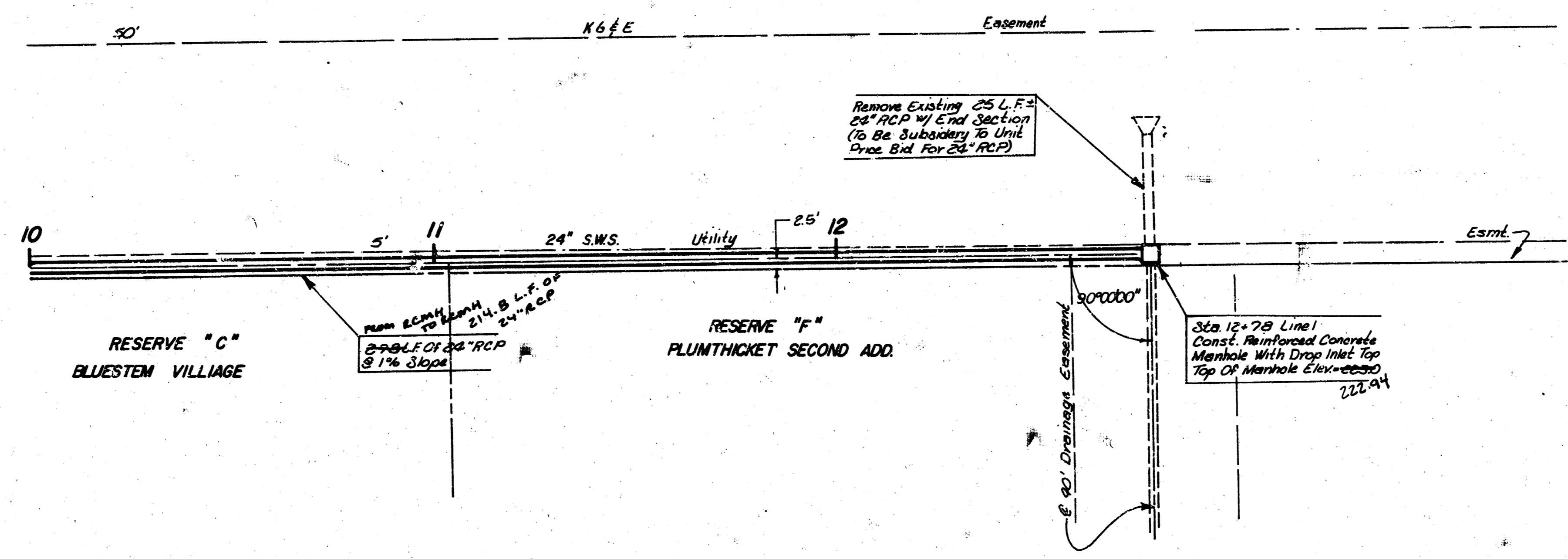
PLAN LINE 1
Scale: 1" = 20'



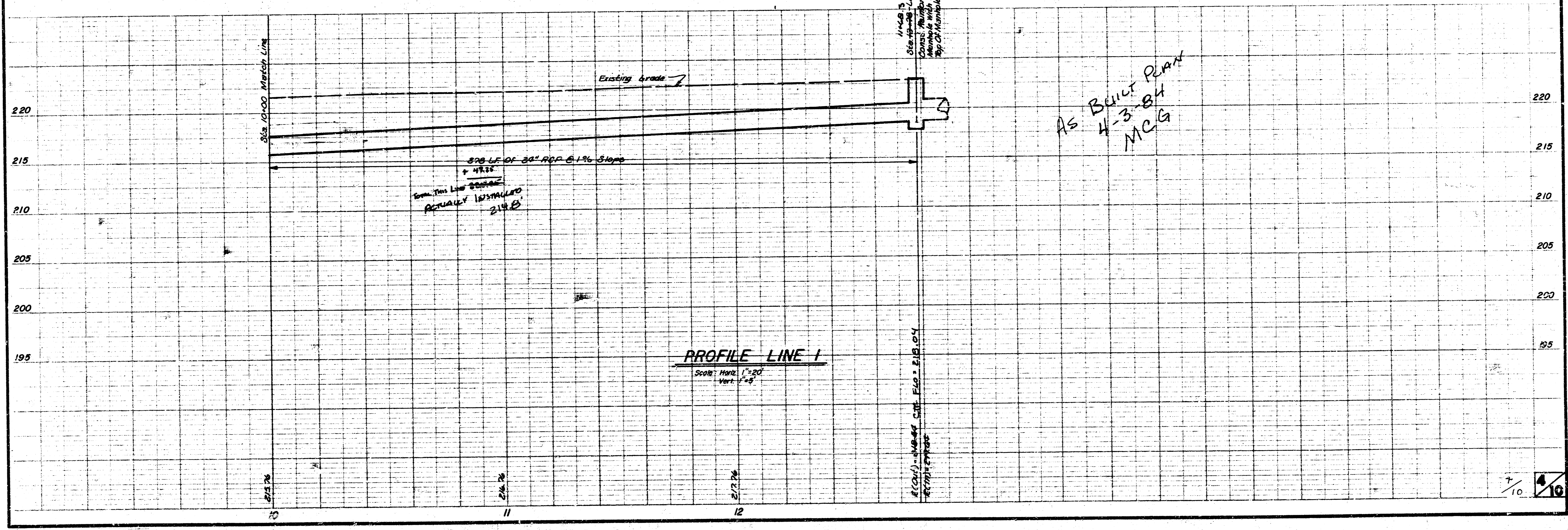
PROFILE LINE 1
Scale: 1" = 20' Vert
1" = 20' Horiz

WOODSPRING STORM WATER SEWER
PROJECT NO.
472-76-245-81268-000-001

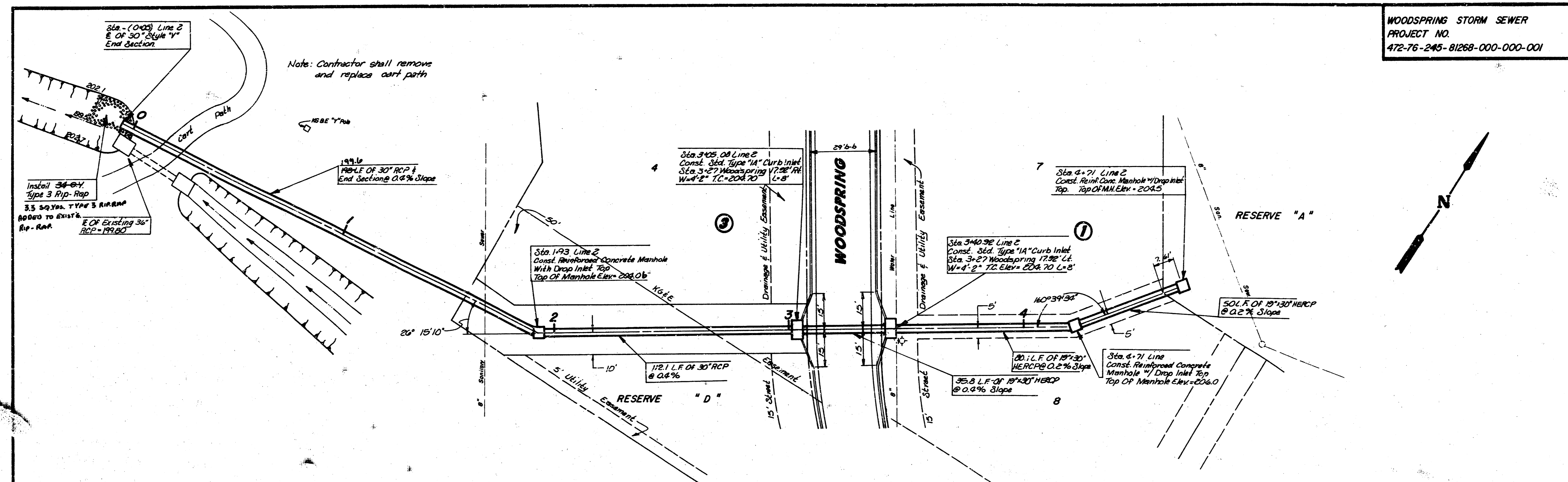




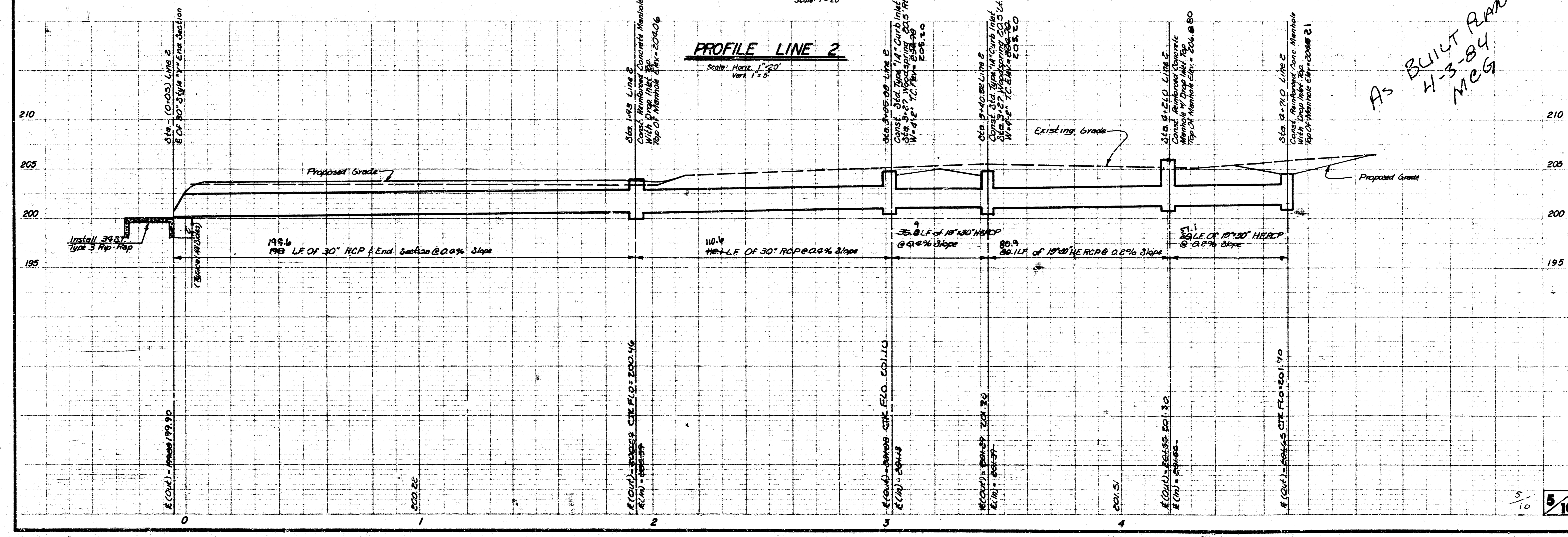
PLAN LINE 1
 Scale: 1" = 20'



PROFILE LINE 1
 Scale: 1" = 20' Vert. 1" = 4'



PLAN LINE 2
Scale: 1" = 20'



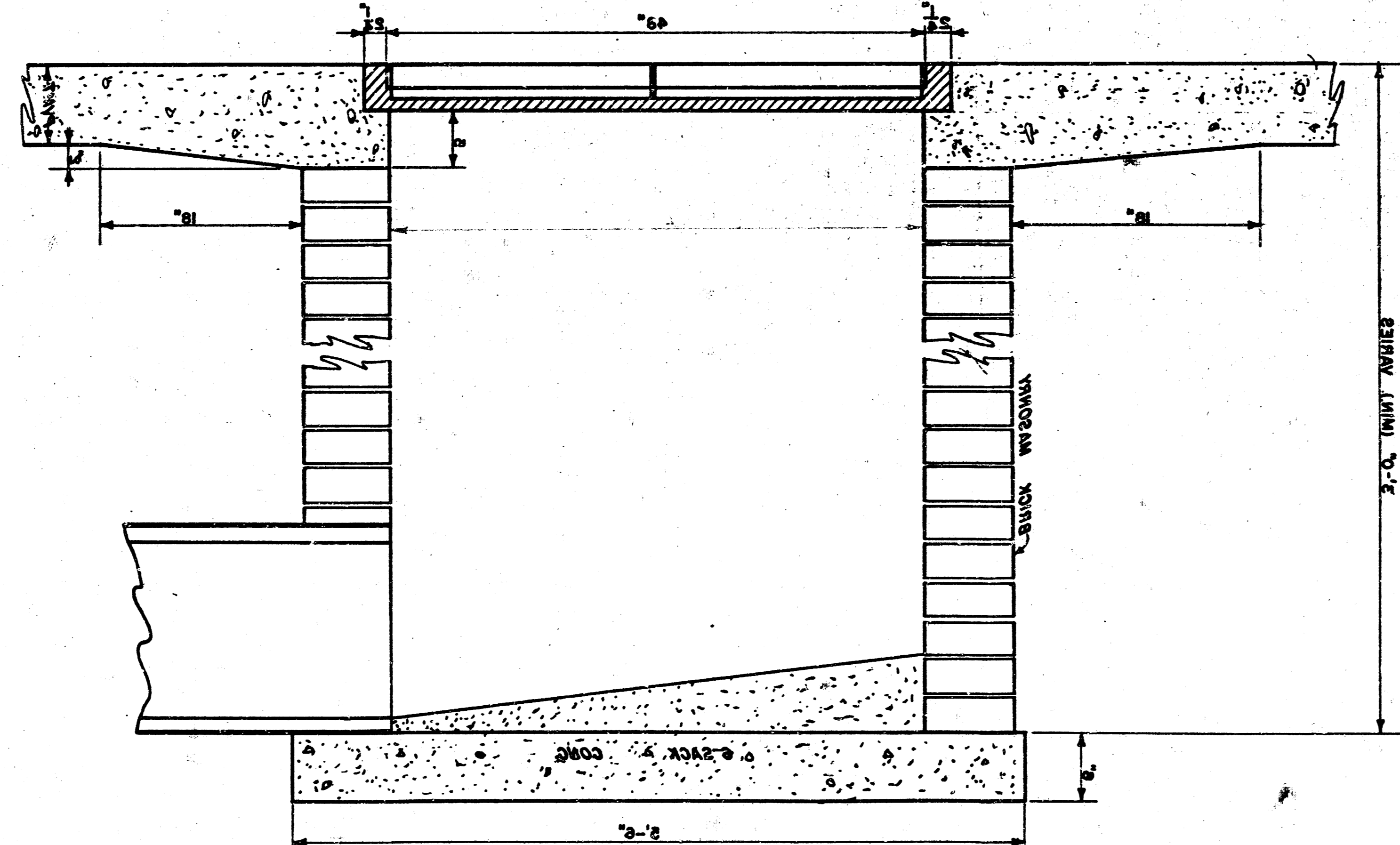
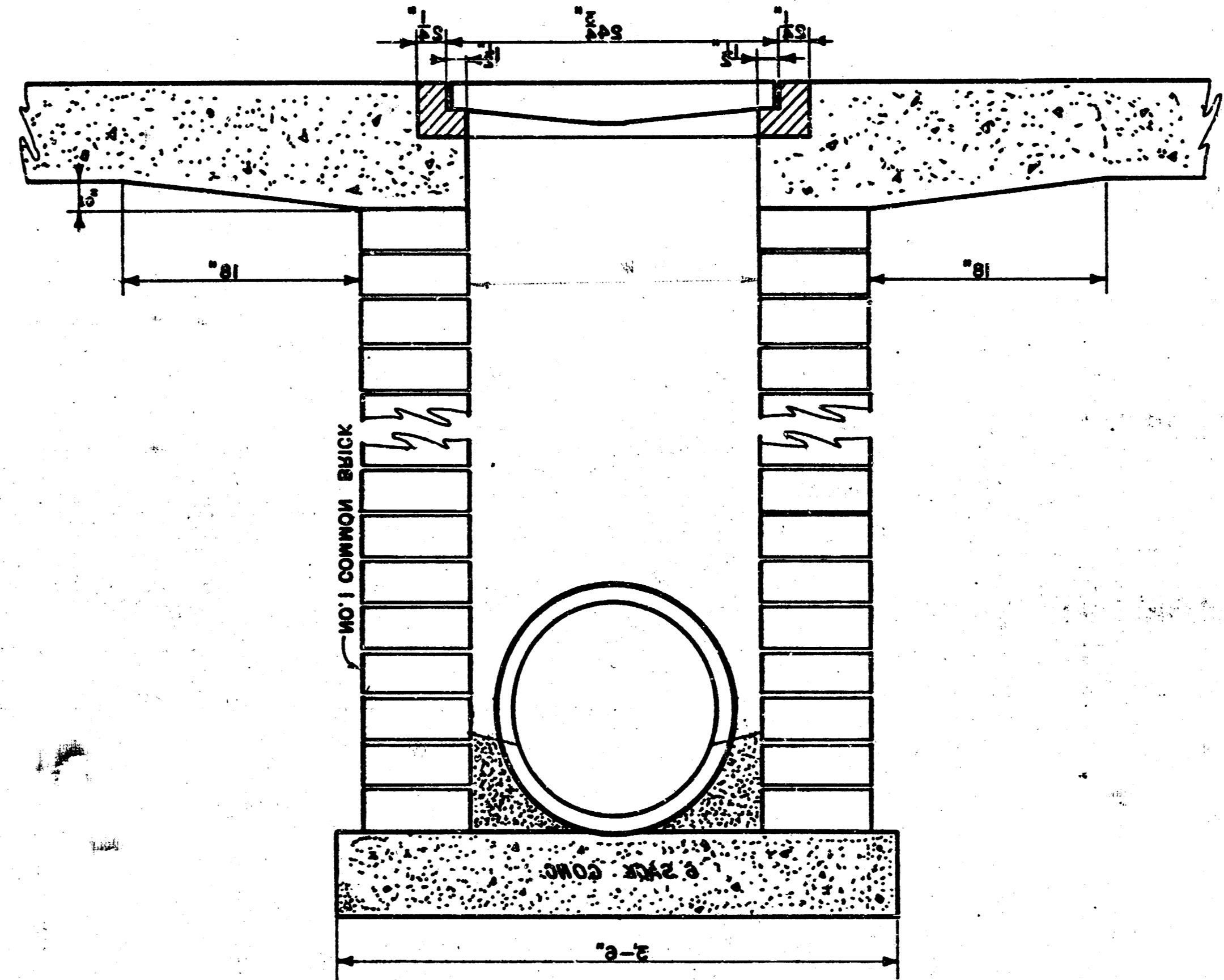
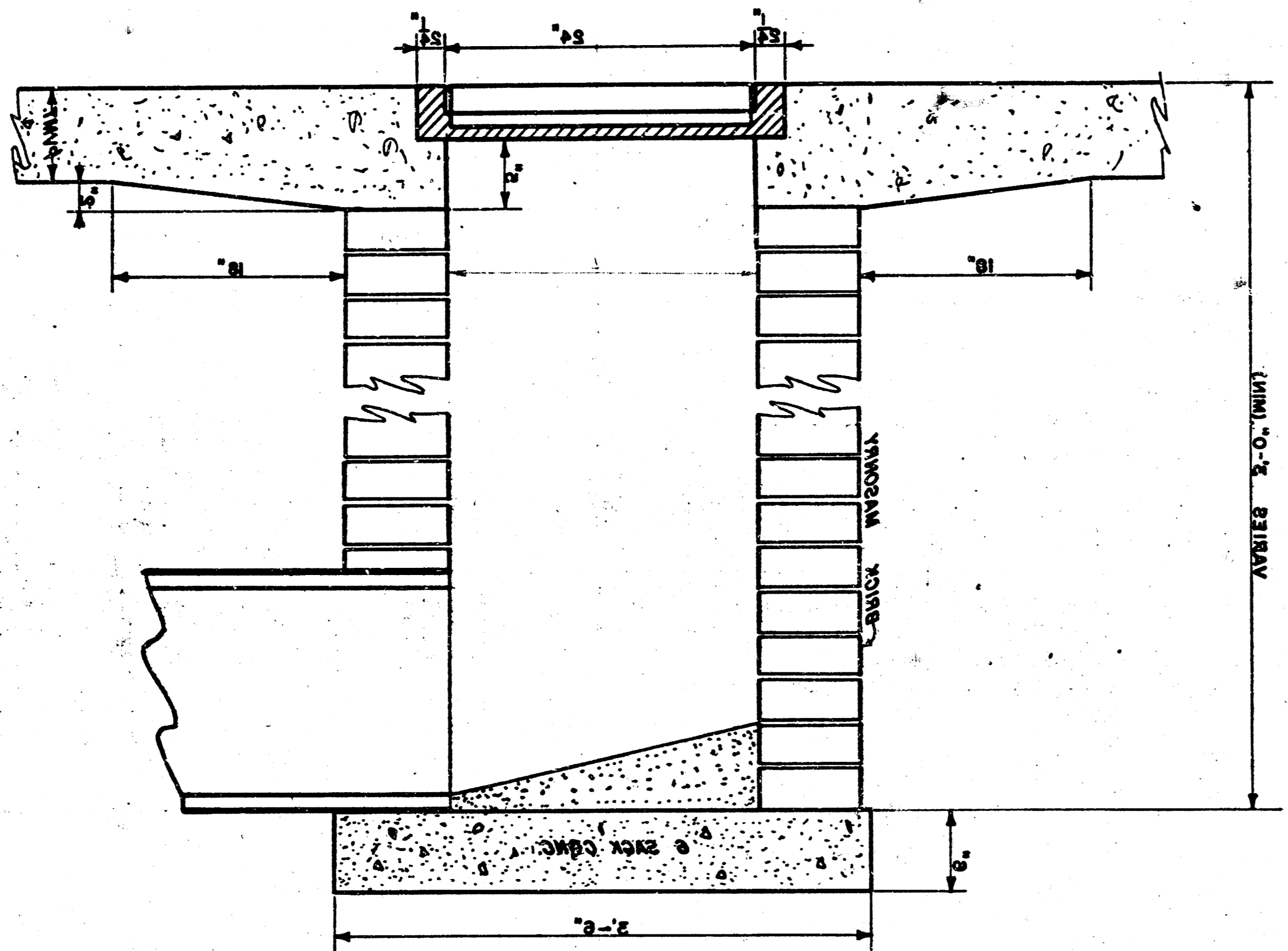
PROFILE LINE 2
Scale: Horiz. 1" = 20'
Vert. 1" = 2'

AS BUILT PLAN
4-3-84
MEG

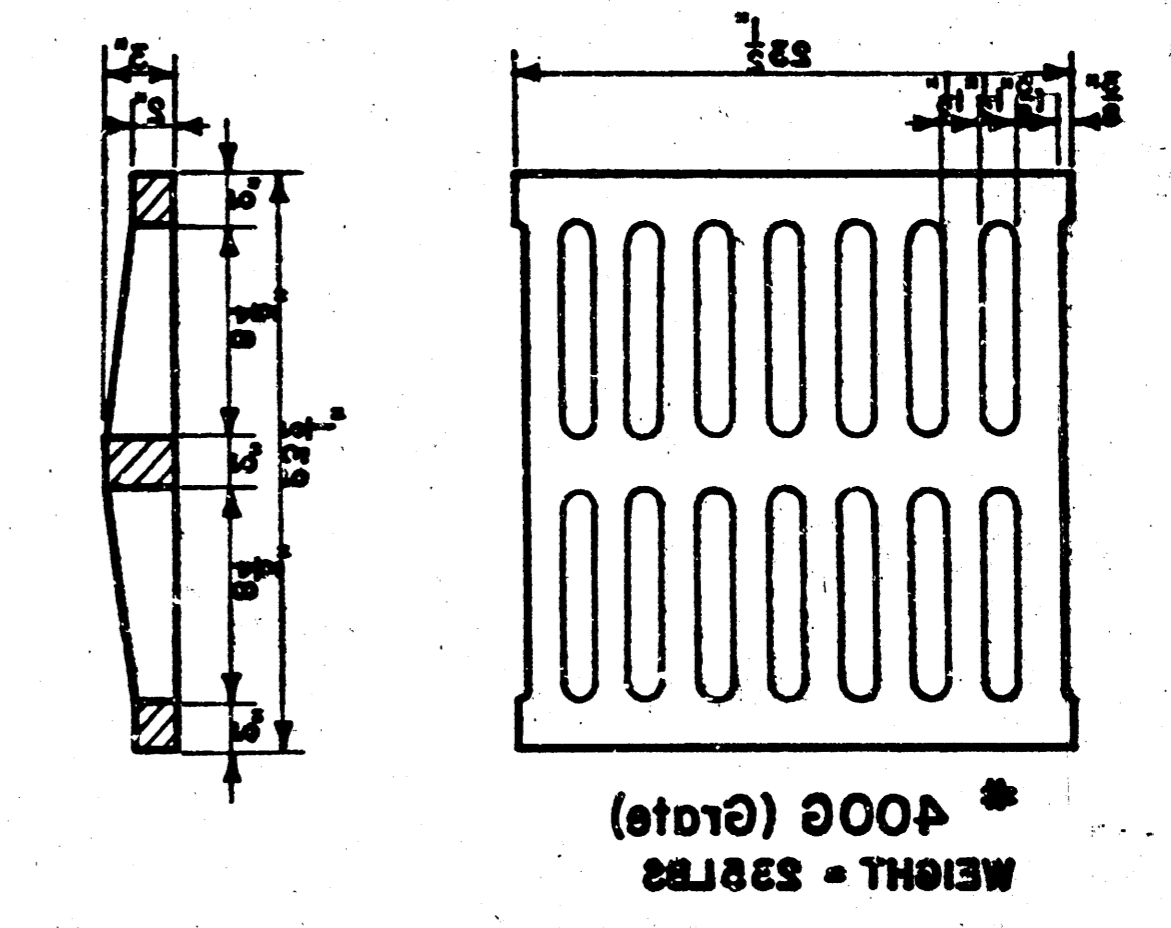
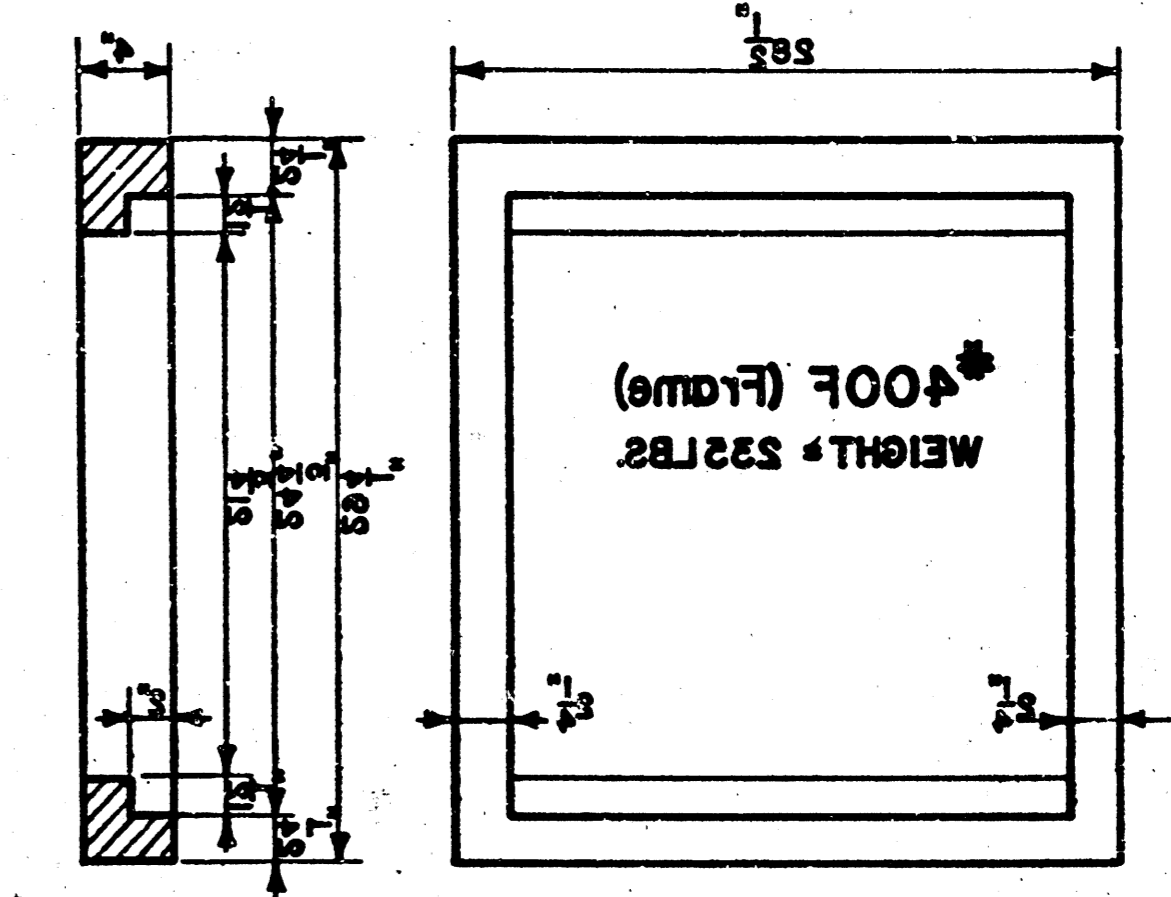
Scale: 1-1/2" = 1'-0"
 Date: JULY 1982
 Project No. 415-78-242-BISB-000-000
 Project WORKING
 City of Wichita, Kansas
 M.E. LINDBAK, City Engineer

DROP INLET DETAILS

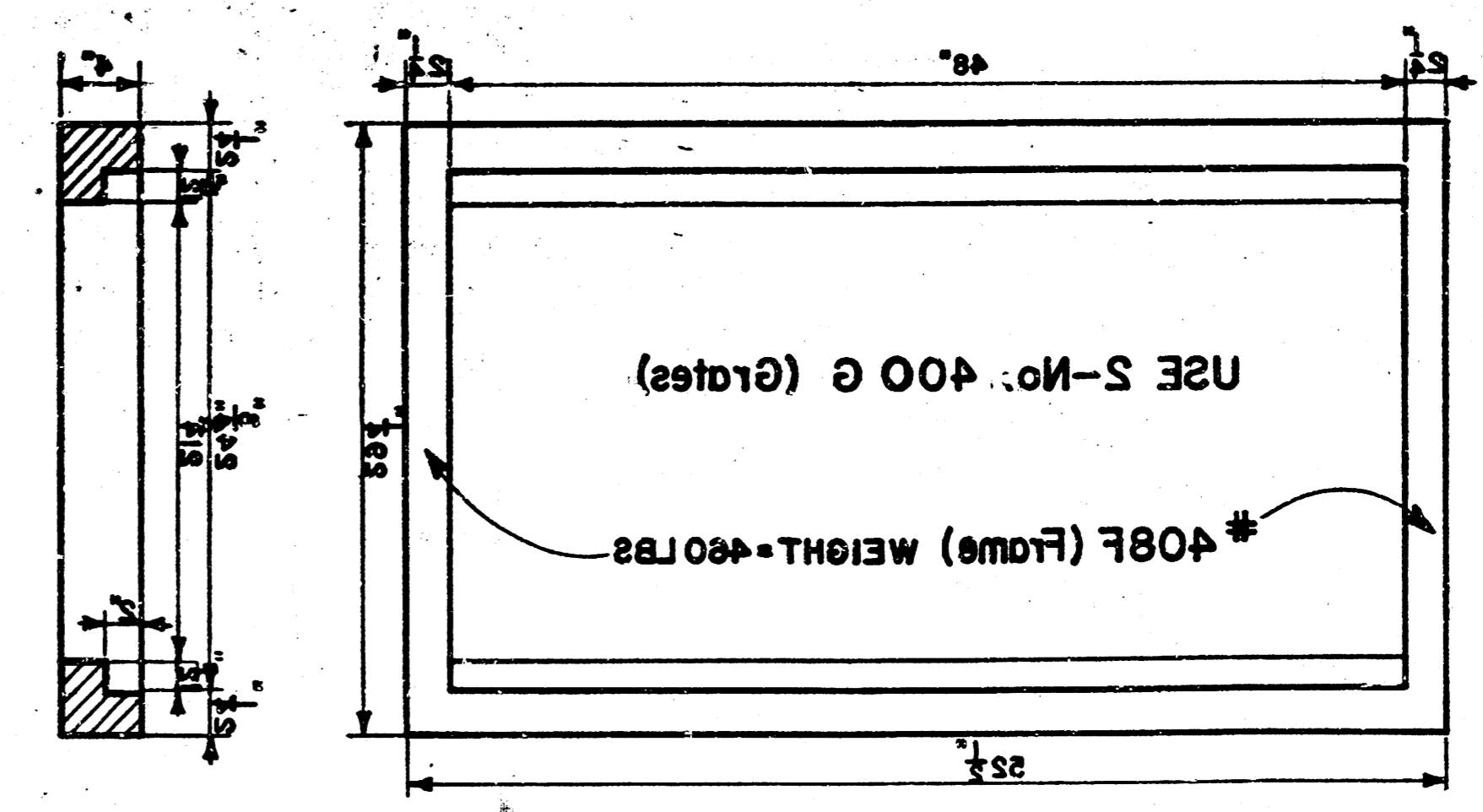
NOTE: Drop Inlet Frames
 Shall Be 24" x 24" With Two
 2" x 2" Grates



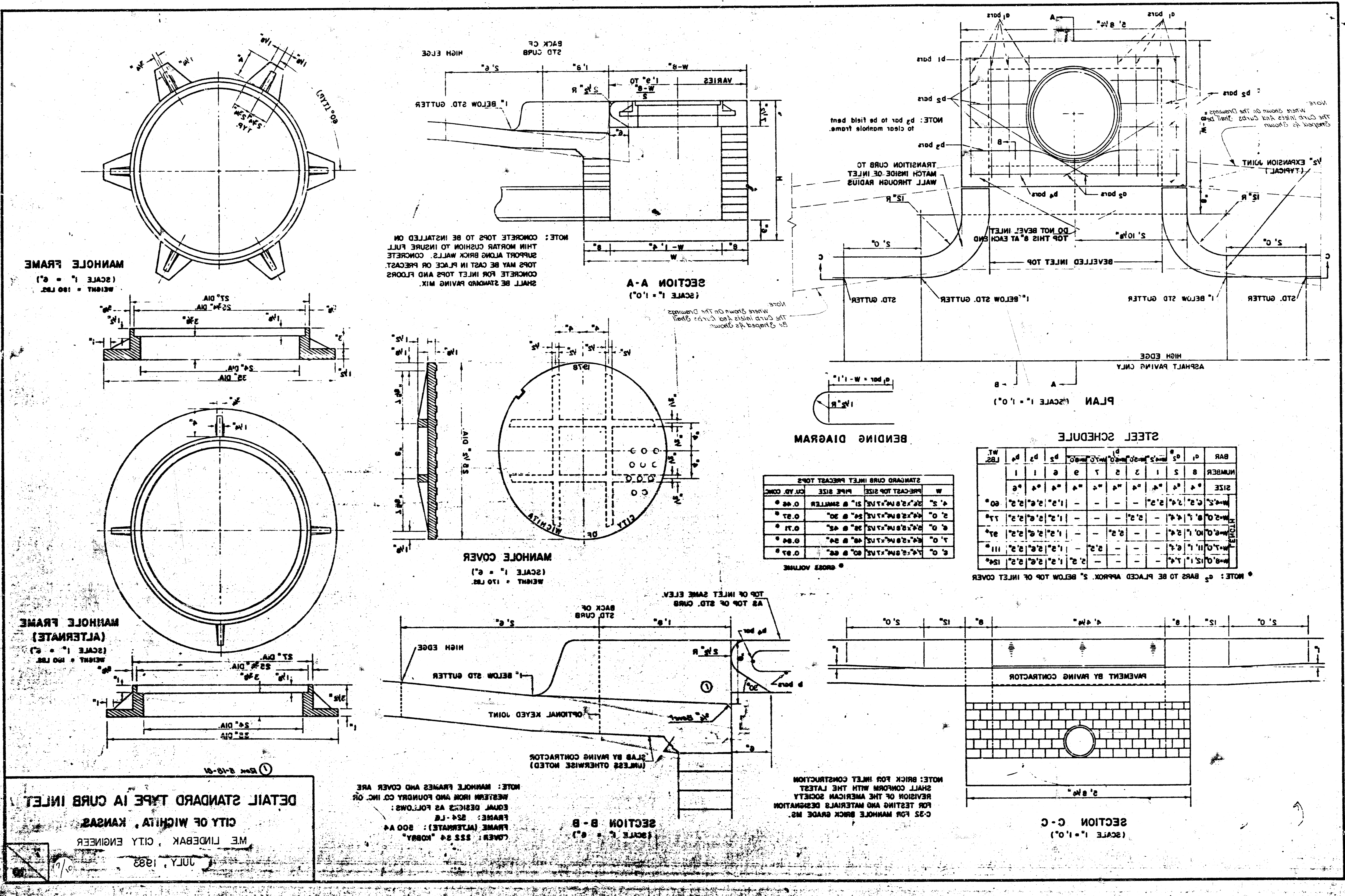
NOTE: Grates shall be printed on the top surface with "CITY OF WICHITA" and letters of least 1" in height. Other marking methods may be used only if approved by the engineer.



24" x 24" Frame & Grate Detail



Double 24" x 24" Frame Detail



ME LINDBAK, CITY ENGINEER
 CITY OF WICHITA, KANSAS
 JULY, 1988

NOTE: MANHOLE FRAMES AND COVER ARE
 CAST BY THE MANUFACTURER AND SHALL CONFORM WITH THE LATEST
 REVISION OF THE AMERICAN SOCIETY
 FOR TESTING AND MATERIALS DESIGNATION
 C-39 FOR MANHOLE BRICK GRADE MS.

NOTE: BRICK FOR INLET CONSTRUCTION
 SHALL CONFORM WITH THE LATEST
 REVISION OF THE AMERICAN SOCIETY
 FOR TESTING AND MATERIALS DESIGNATION
 C-39 FOR MANHOLE BRICK GRADE MS.

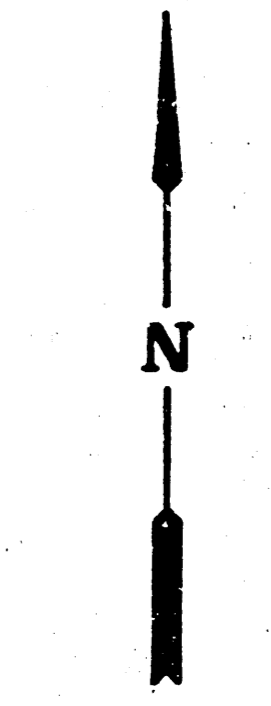
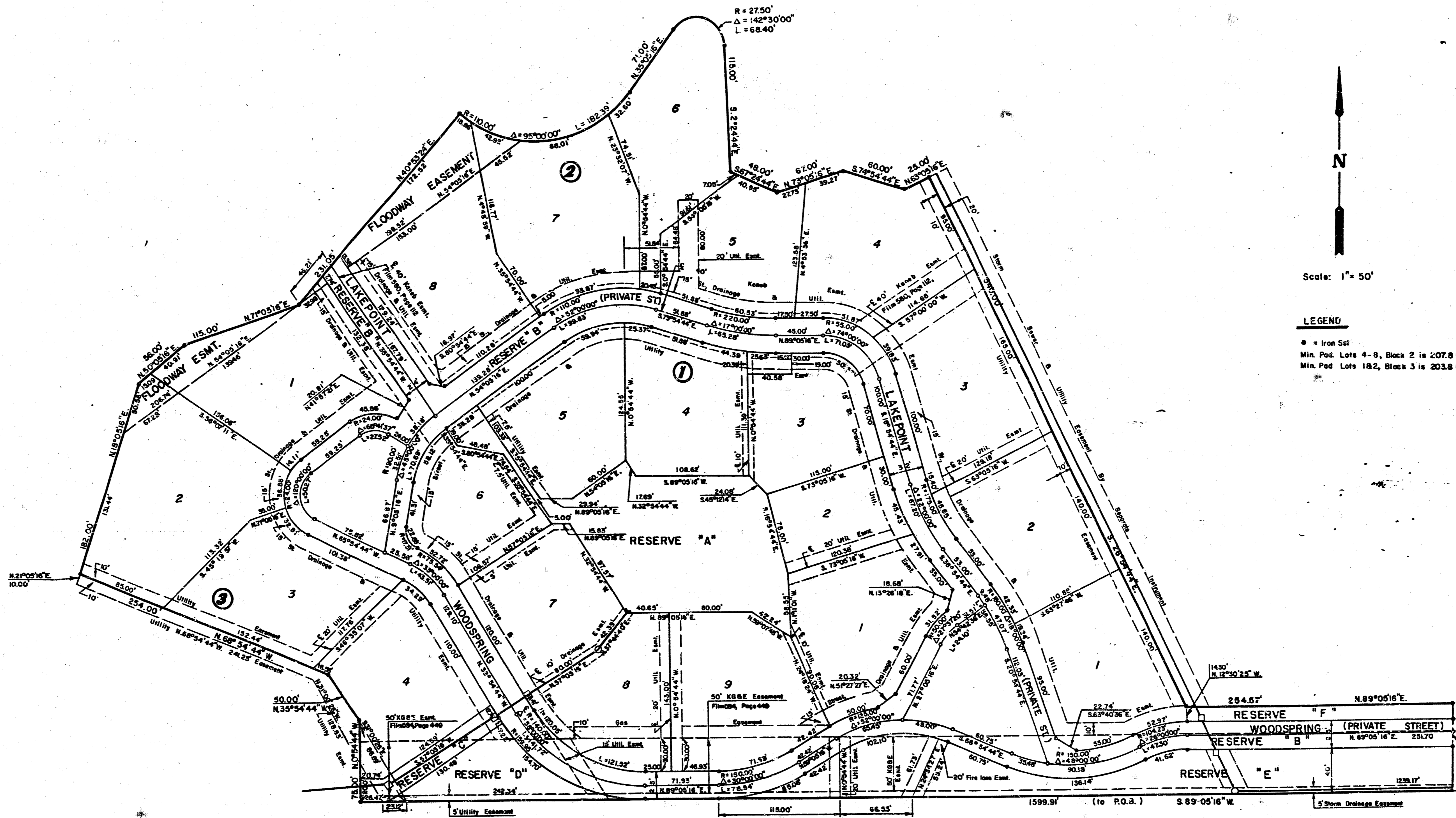
STEEL SCHEDULE

BAR NUMBER	SIZE	LENGTH	WEIGHT
1	#4	11.0'	11.1
2	#4	11.0'	11.1
3	#4	11.0'	11.1
4	#4	11.0'	11.1
5	#4	11.0'	11.1
6	#4	11.0'	11.1
7	#4	11.0'	11.1
8	#4	11.0'	11.1
9	#4	11.0'	11.1
10	#4	11.0'	11.1
11	#4	11.0'	11.1
12	#4	11.0'	11.1
13	#4	11.0'	11.1
14	#4	11.0'	11.1
15	#4	11.0'	11.1
16	#4	11.0'	11.1
17	#4	11.0'	11.1
18	#4	11.0'	11.1
19	#4	11.0'	11.1
20	#4	11.0'	11.1
21	#4	11.0'	11.1
22	#4	11.0'	11.1
23	#4	11.0'	11.1
24	#4	11.0'	11.1
25	#4	11.0'	11.1
26	#4	11.0'	11.1
27	#4	11.0'	11.1
28	#4	11.0'	11.1
29	#4	11.0'	11.1
30	#4	11.0'	11.1
31	#4	11.0'	11.1
32	#4	11.0'	11.1
33	#4	11.0'	11.1
34	#4	11.0'	11.1
35	#4	11.0'	11.1
36	#4	11.0'	11.1
37	#4	11.0'	11.1
38	#4	11.0'	11.1
39	#4	11.0'	11.1
40	#4	11.0'	11.1
41	#4	11.0'	11.1
42	#4	11.0'	11.1
43	#4	11.0'	11.1
44	#4	11.0'	11.1
45	#4	11.0'	11.1
46	#4	11.0'	11.1
47	#4	11.0'	11.1
48	#4	11.0'	11.1
49	#4	11.0'	11.1
50	#4	11.0'	11.1

968-C 8-5

FINAL PLAT OF WOODSPRING

AN ADDITION TO WICHITA, SEDGWICK COUNTY, KANSAS



Scale: 1" = 50'

LEGEND

- = Iron Set
- Min. Plat. Lots 4-8, Block 2 is 207.8 (City Datum)
- Min. Plat. Lots 1&2, Block 3 is 203.8 (City Datum)

MATCH POINT

20.00

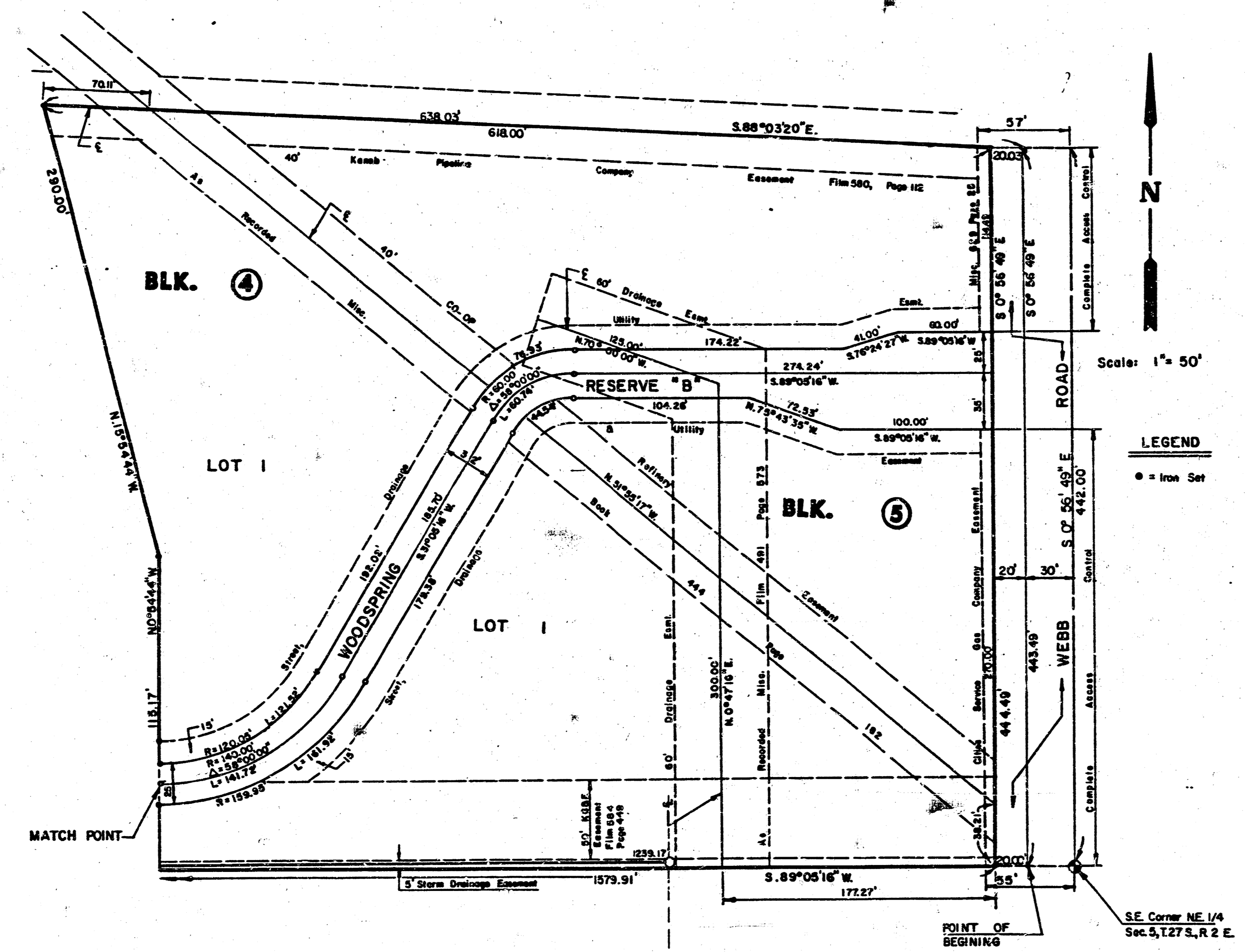
S-2 2-29B

Sheet 2
of 10

466-C 8-5

FINAL PLAT OF WOODSPRING

AN ADDITION TO WICHITA, SEDGWICK COUNTY, KANSAS



I, Michael D. Harding, a Civil Engineer in Kansas, do hereby certify that I have been in responsible charge of surveying and plating of "Woodspring", an addition to Wichita, Sedgwick County, Kansas into lots, blocks, and reserves, the same being accurately set forth in the accompanying plat and described as follows:

A tract of land in the northeast quarter of Section 3, Township 27 south, Range 2 east of the 6th P.M., Sedgwick County, Kansas described as:
Beginning at a point 30.00 feet west of the southeast corner of said northeast quarter; thence along the south line of said northeast quarter bearing S 89° 05' 16" W, 1599.91 feet; thence N 0° 34' 44" W, 75.00 feet; thence S 15° 54' 44" W, 50.00 feet; thence S 64° 54' 44" W, 254.00 feet; thence N 18° 05' 16" E, 182.00 feet; thence N 50° 05' 16" E, 56.00 feet; thence N 71° 05' 16" E, 113.00 feet; thence N 40° 53' 24" E, 231.05 feet to a point on a curve to the right with a central angle of 95°, a radius of 110.00 feet, a length of 182.39 feet and a long chord of 162.20 feet bearing N 81° 35' 16" E; thence N 35° 05' 16" E, 71.00 feet; thence along a curve to the right with a central angle of 142° 30' 00", a radius of 27.50 feet, a length of 68.40 feet and a long chord of 52.08 feet bearing S 73° 39' 44" E; thence S 7° 24' 44" E, 123.00 feet; thence S 69° 24' 44" E, 48.00 feet; thence N 73° 05' 16" E, 67.00 feet; thence S 74° 34' 44" E, 60.00 feet; thence N 63° 05' 16" E, 25.00 feet; thence S 18° 34' 44" E, 540.00 feet; thence S 89° 05' 16" E, 254.57 feet; thence N 0° 34' 44" W, 113.17 feet; thence N 15° 54' 44" W, 290.00 feet; thence S 88° 03' 20" E, 638.03 feet; thence S 0° 56' 49" E, 443.49 feet along the west right of way line of Webb Road to the point of beginning.

I hereby certify that the details of this plat are correct to the best of my knowledge and belief this 22 day of April, 1983.

Michael D. Harding
Michael D. Harding, Civil Engineer
Mid-Kansas Engineering Consultants, P.A.
240 N. Rock Road, Suite 130
Wichita, Kansas 67206

Know all men by these presents that we the undersigned property owners of the land as above set forth in the Civil Engineer's Certificate have caused the same to be surveyed and platted into lots, blocks, and reserves, the same to be known as "Woodspring", an addition to Wichita, Sedgwick County, Kansas. Easements for the construction and maintenance of public utilities and drainage, as indicated on the accompanying plat, are hereby granted to the City of Wichita. Reserves "A" and "B" are platted for construction and maintenance of public utilities and open space. Reserve "C" is platted for construction and maintenance of public utilities except for that portion within the 50' E.C.I.E. easement, parking, open space, drainage, and private drives. Reserve "D" is platted for a firelane, storm sewer, and open space. Reserves "B" and "C" are platted for a 50' E.C.I.E. easement, parking, construction and maintenance of public utilities in the easements shown on the face of the plat. All reserves shall be owned and maintained by the Woodspring Homeowners Association. The floodway easement in Lots 1 and 2, Block 3, and Lots 7 and 8, Block 2 shall be the responsibility of the owner(s) of the same. Provided further, that no structure shall be constructed on or within said floodway easement, nor shall any fill, change of grade, creation of channel or other work be carried on without the permission of the Wichita-Sedgwick County Flood Control Office or their successors of office. All abutting rights of access to or from Webb Road, over and across the east line of Blocks 4 and 5 are hereby granted to the City of Wichita, Kansas. Minimum pad elevation for Lots 4 through 6 inclusive, Block 2 shall be 207.8 and Lots 1 and 2, Block 2 shall be 203.8, City of Wichita Data.

Tallgrass Company, a Partnership
By: **C.D. Peltzer**
E.D. Peltzer, Partner

STATE OF KANSAS
COUNTY OF SEDGWICK
Be it remembered that on this 22nd day of April, 1983, before me, Notary Public in and for said State and County, came **Michael D. Harding**, known to me to be the same person who executed the foregoing instrument of writing and duly acknowledged the execution of the same. In testimony whereof I have hereunto set my hand and affixed my notarial seal the day and year above written.

Lonnie J. Graham
Notary Public L1798 J. GRAHAM
My Appointment Expires: 2-9-86

This plat of "Woodspring" has been submitted to and approved by the Wichita-Sedgwick County Metropolitan Area Planning Commission, Wichita, Kansas.

Dated this 7th day of April, 1983.
Wichita-Sedgwick County Metropolitan Area Planning Commission

D. P. Payne Chairman
Robert A. Lakin Secretary

This plat approved and all dedications shown hereon, if any, accepted by the City Commission of the City of Wichita, Kansas this 26th day of May, 1983.

Margaret Wright Mayor
Donald C. Clark City Clerk

This plat approved and all dedications shown hereon, if any, accepted by the Board of County Commissioners of Sedgwick County, Kansas, this 26th day of May, 1983.

Jack Spratt Chairman
Donald E. Grogg Commissioner
Tom Scott Commissioner

Attest: **Deborah E. White** County Clerk

Entered on transfer record this 26 day of May, 1983.

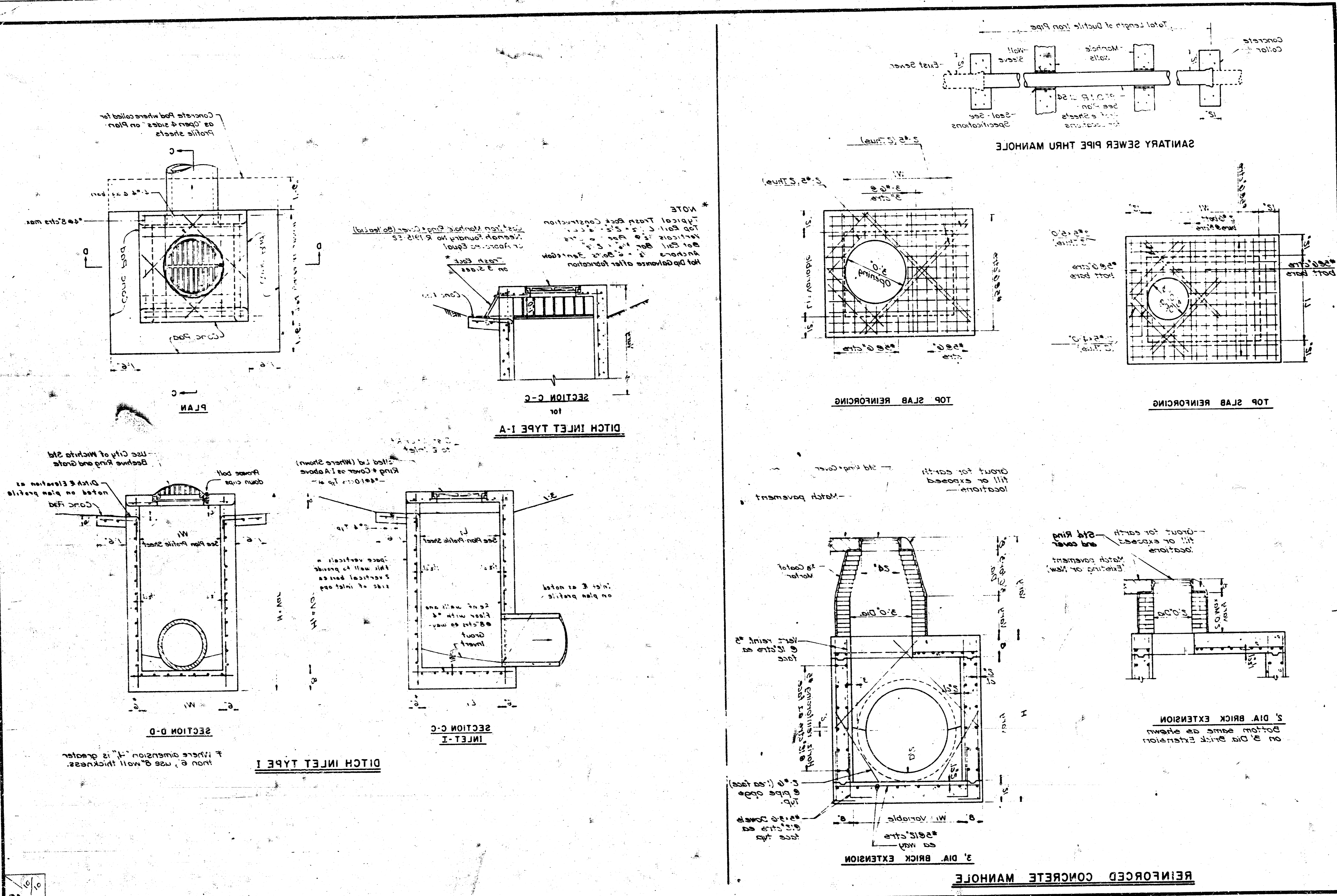
Deborah E. White County Clerk

STATE OF KANSAS
COUNTY OF SEDGWICK

This is to certify that this instrument was filed for record in the Register of Deeds Office at 12:15 P.M. on the 16th day of JUNE, 1983.

Barbara J. McCurt Register
Pat Kettler Deputy

S-2 2-29A



10

14 6 2 15